

2021 DISTRICTING PLAN FOR COUNCIL DISTRICT BOUNDARIES



We do amazing.

**PREPARED FOR THE MAYOR AND CITY COUNCIL OF
THE CONSOLIDATED GOVERNMENT OF
COLUMBUS, GEORGIA BY THE COLUMBUS
CONSOLIDATED GOVERNMENT DISTRICTING
COMMISSION**

December 6, 2021

Introduction

This report summarizes the 2021 Districting Plan for Columbus, Georgia Council District Boundaries. The Columbus Consolidated Government Districting Commission utilized 2020 Census data to develop a Districting Plan that attempts to equally distribute the total population of Muscogee County into eight (8) equally populated Council Districts. In addition, the 2021 Districting Plan increases the minority population in each Council District.

Background

Within six (6) months, after the publication of each federal census of population of Columbus, Georgia, the districting commission shall file with the Council a report containing a recommended plan for reapportionment of the Council District boundaries to comply with the following specifications:

- Each district shall be formed of contiguous, and to the extent reasonably possible, compact territory, and its boundary lines shall be the center lines of streets or other well-defined boundaries; and
- Each district shall contain as nearly as is reasonable the same population.

A further consideration guiding the Districting Commission is the need for final approval of the Districting Plan by the Georgia Legislative and Congressional Reapportionment Office. Said Office requires the following traditional redistricting principles:

- Compactness
- Contiguity
- Respecting political boundaries
- Communities of interest
- Incumbent protection

During September 2021, the 2020 Census figures were supplied to the City of Columbus for districting purposes under the United States Public Law 94-171. These figures are on file at the Columbus Consolidated Government Board of Registrars and the Planning Department.

In accordance with the Charter, the Districting Commission was formed for the purpose of preparing a new Districting Plan based on 2020 Census data. Appendix A illustrates a list of committee members serving on the Districting Commission. The 2021 Districting Plan will be submitted to and approved by the Georgia Legislative and Congressional Reapportionment Office prior to adoption of this plan by the City Council.

Plan Development

The work of the Districting Commission began on October 14, 2021 by clearly defining its goals:

- There was a need to change the present Council District boundary lines to allow for a more equal distribution of population growth that occurred between the 2010 and 2020 Census counts.
- Any proposed boundary changes were done in such a manner so as not to diminish minority populations in any of the eight (8) Council Districts.

With the above objectives, the Districting Commission began by first comparing 2010 and 2020 Census data with present Council Districts. Table 1 provides a summary of the total population for each Council District. Map 1 titled 2010 Council Districts with Election Precincts displays existing Council Districts and voter precincts.

Table 1

	2010 Population			2020 Population		
	Total	White	Minority	Total	White	Minority
Columbus	182,004	78,483 43%	103,521 57%	198,850*	74,261* 37%	124,589* 63%
District 1	22,939	6,627 29%	16,312 71%	23,444	5,697 24%	17,747 76%
District 2	22,794	17,314 76%	5,480 24%	27,676	17,873 65%	9,803 35%
District 3	22,737	2,228 10%	20,509 90%	24,996	2,494 10%	22,502 90%
District 4	22,932	2,872 13%	20,060 87%	25,642	3,033 12%	22,609 88%
District 5	22,474	14,796 66%	7,678 34%	23,642	12,558 53%	11,084 47%
District 6	22,745	14,643 64%	8,102 36%	28,372	14,820 52%	13,552 48%
District 7	22,642	5,850 26%	16,792 74%	20,798	5,142 25%	15,656 75%
District 8	22,741	14,153 62%	8,588 38%	24,280	12,644 52%	11,636 48%

*Denotes where Census Blocks were combined to skew the totals/districts (199,814)

As shown in Table 1, the 2010 Columbus population was 182,004. It grew by 17,810 people or 9% for a total of 199,814.

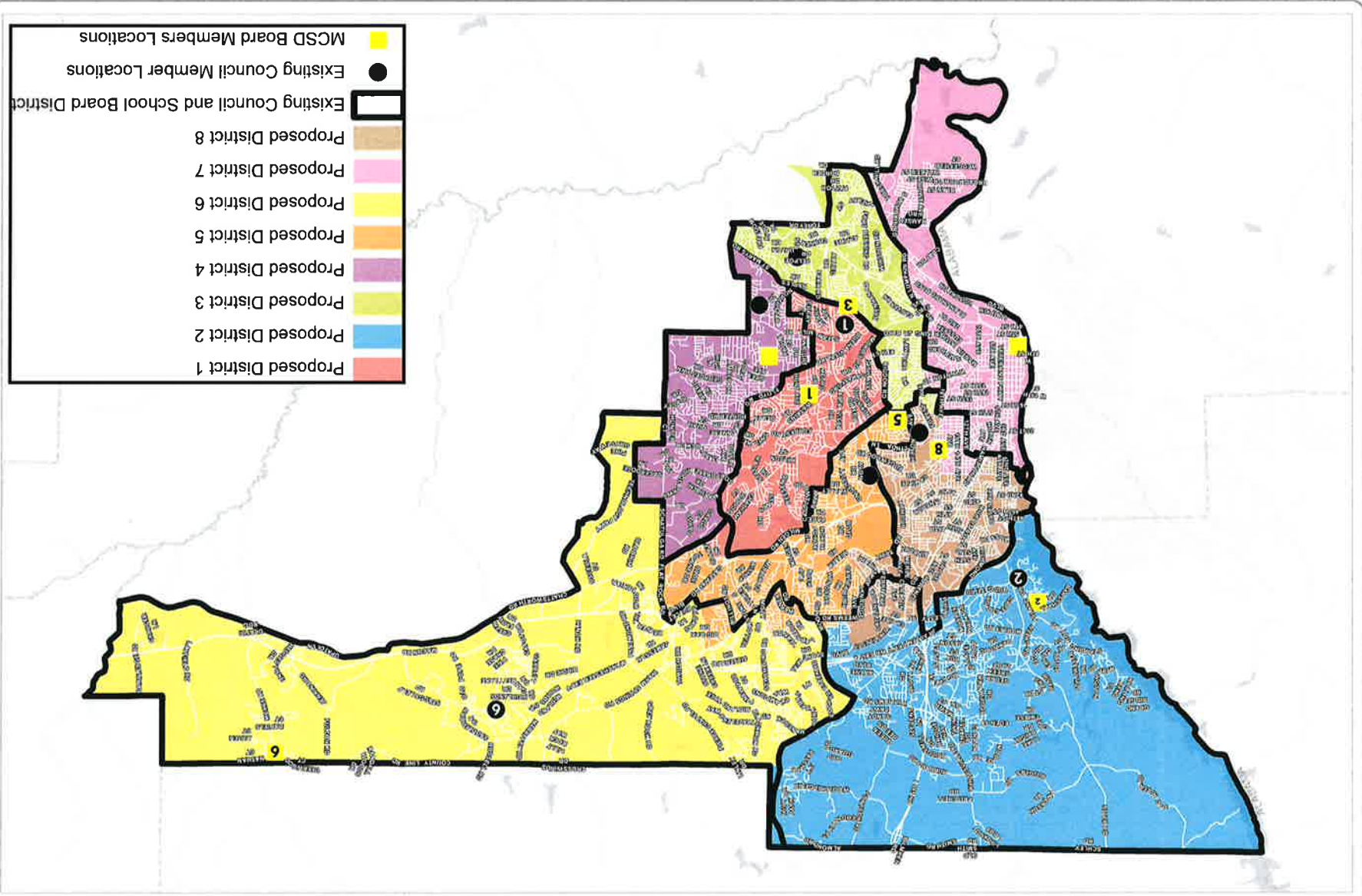
Table 1 also shows considerable changes in the race composition of Muscogee County. The white/minority ratio changed from 43%/57% during 2010 to 37%/63% for 2020. This reflects a decline in the white population from 4,222 (6%). The minority population exhibited significant growth by 21,068 people (6%).

Dividing the 2020 Columbus total population of 199,814 into eight (8) Council Districts equals an ideal population of 24,977 people per Council District. Each District was not able an ideal population range. The Georgia Legislative and Congressional Reapportionment Office recommends a variance or allowance of + or – 1%. A variance of 250 + or – is acceptable. The population range for each district is 24,727 to 25,227.

Recommended Districting Plan

In developing the 2021 Districting Plan, the imbalance due to population shifts among the districts was clearly recognized. As the following proposed district maps show, Council Districts 2, 4, and 6 are over target and Council Districts 1, 5, 7, and 8 are under target. Council District 3 is on target. However, all Council Districts are within 1% of each other. In order to ensure that all of the eight districts were equally balanced and fall within the ideal population range, it was necessary to adjust the existing district boundaries. The population totals within the present districts and the boundary alignments among districts were taken into consideration to avoid diluting the minority population and keeping incumbents safe. Appendix B provides a legal description of the revised Council District boundaries.

Proposed Council Districts Scenario J - Composite Map
 This report is made available as a public service. Maps and data are to be used for reference purposes only. The date provided is subject to certain changes. Map information is believed to be correct but is not guaranteed.



- Proposed District 1
- Proposed District 2
- Proposed District 3
- Proposed District 4
- Proposed District 5
- Proposed District 6
- Proposed District 7
- Proposed District 8
- Existing Council and School Board District
- Existing Council Member Locations
- MCSD Board Members Locations

Not to Scale

Projection: NAD 83
Datum: Stone Plane GA West 1002

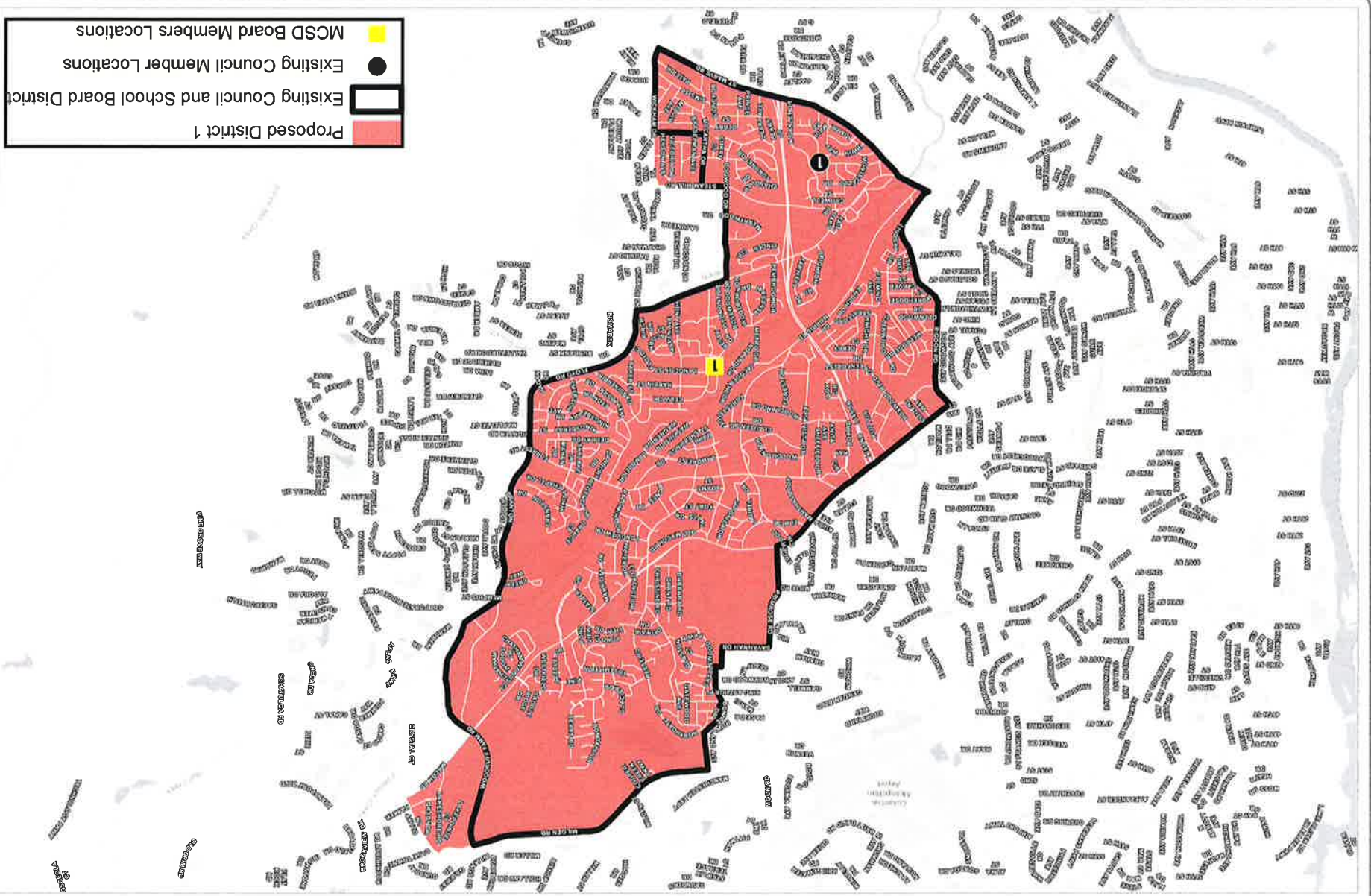


Planning Department
Date: 12/6/2021



Proposed Council Districts Scenario J - District 1

This material is made available as a public service. Maps and data are to be used for reference purposes only. The data contained is subject to constant change. Map information is believed to be correct but is not guaranteed.



North to Scale

Projection: NAD 83

Datum: State Plane GA West 1 002

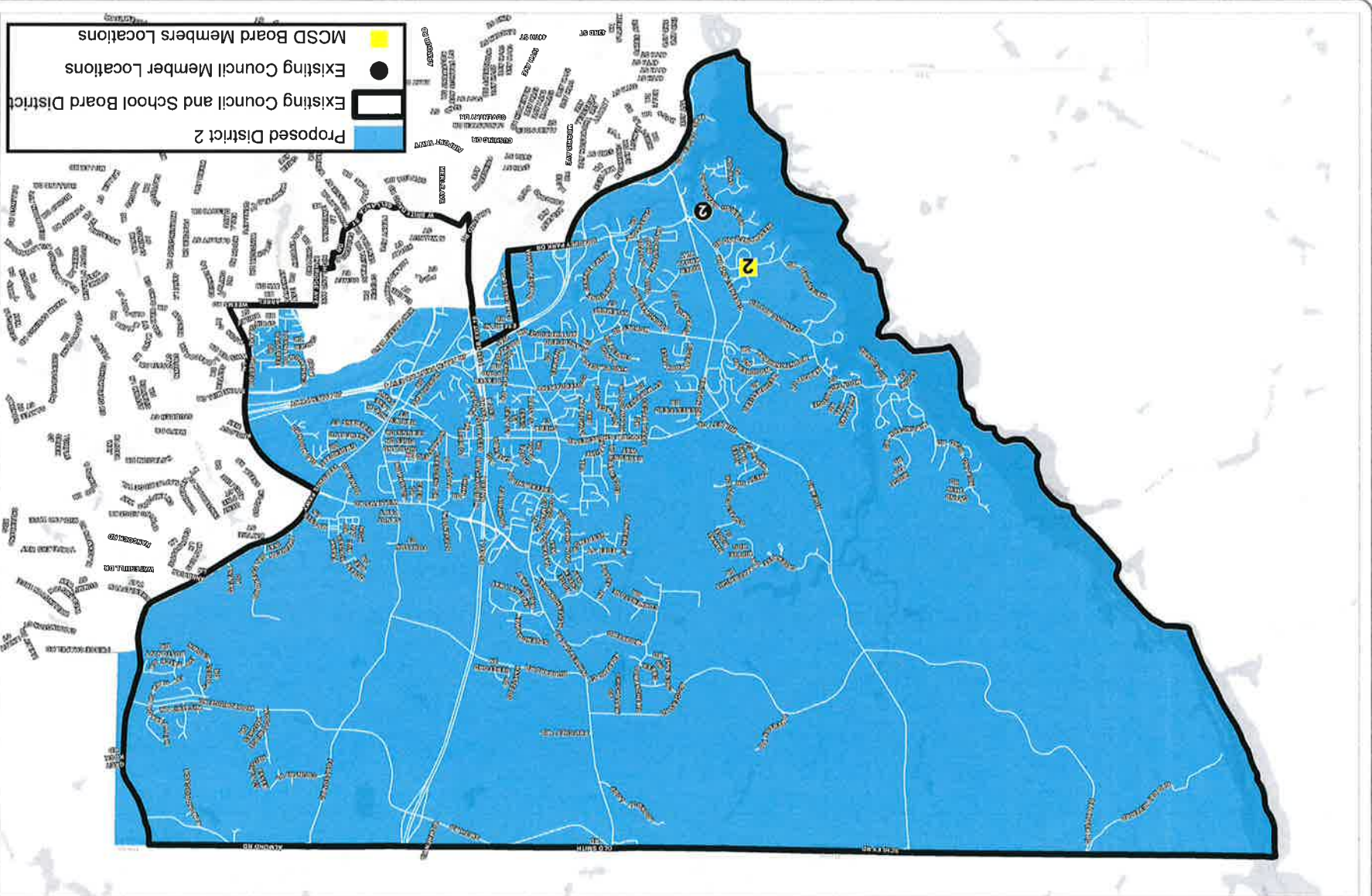


Planning Department

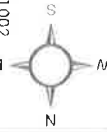
Date: 12/6/2021



Proposed Council Districts Scenario 1 - District 2
 This material is made available as a guide to the maps and data on the web for reference purposes only. The data contained is subject to constant change. Map information is believed to be correct but is not guaranteed.



Not to Scale
 Projection: NAD 83
 Datum: State Plane GA West 1002

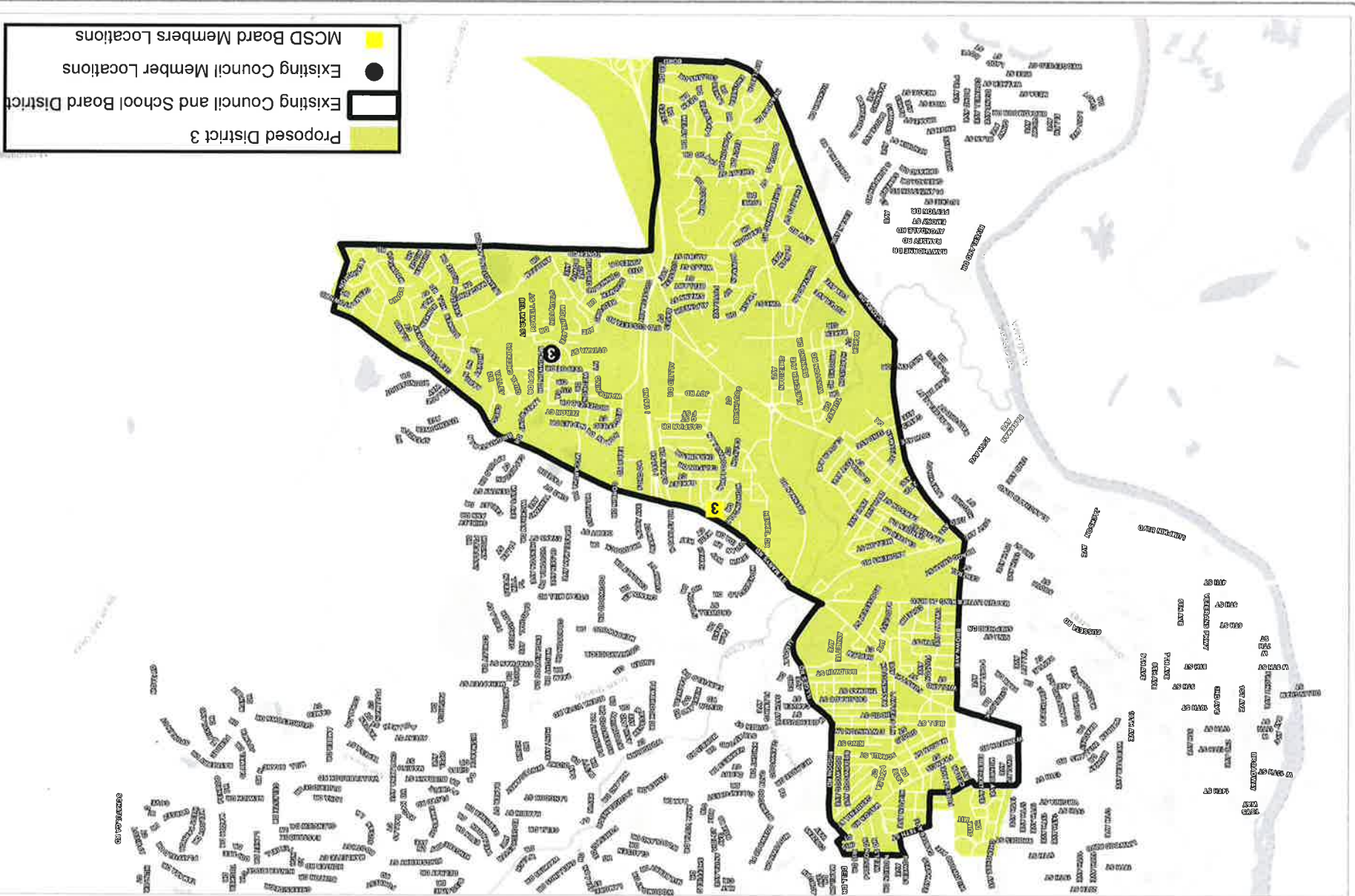


Planning Department
 Date: 12/6/2021



Proposed Council Districts Scenario J - District 3

The number of voters within each ward is shown in a shaded box. The ward boundaries are shown in a dashed line. The ward boundaries are shown in a dashed line. The ward boundaries are shown in a dashed line.



Existing Council and School Board District
 Existing Council Member Locations
 MCSD Board Members Locations

Not to Scale
 Projection: NAD 83
 Datum: State Plane GA West 1 002 FT

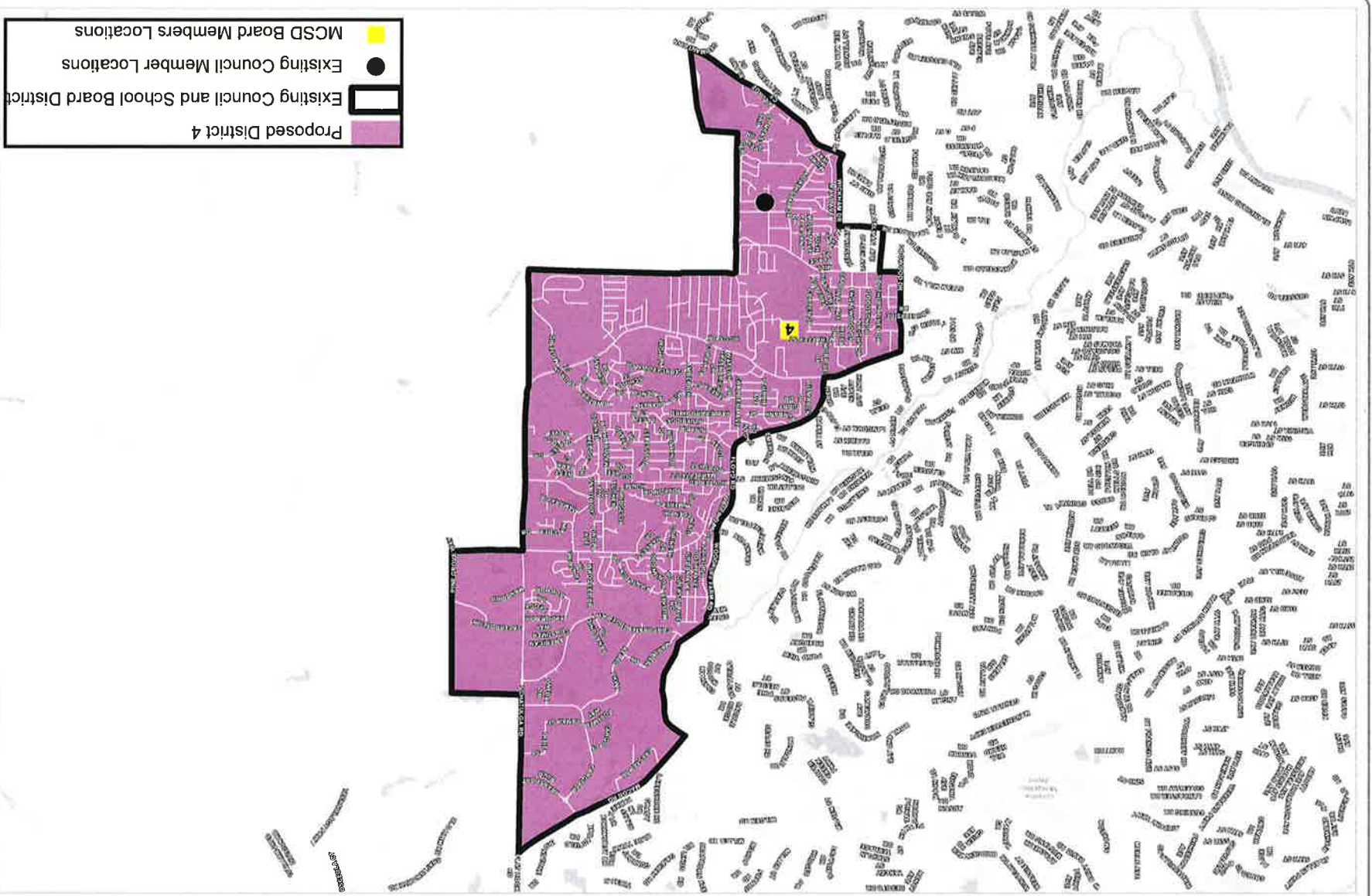


Planning Department
 Date: 12/6/2021



Proposed Council Districts Scenario J - District 4

The material is made available as public for use. Maps and data are to be used for informational purposes only. The data contained is subject to constant change. Map information is believed to be correct but is not guaranteed.



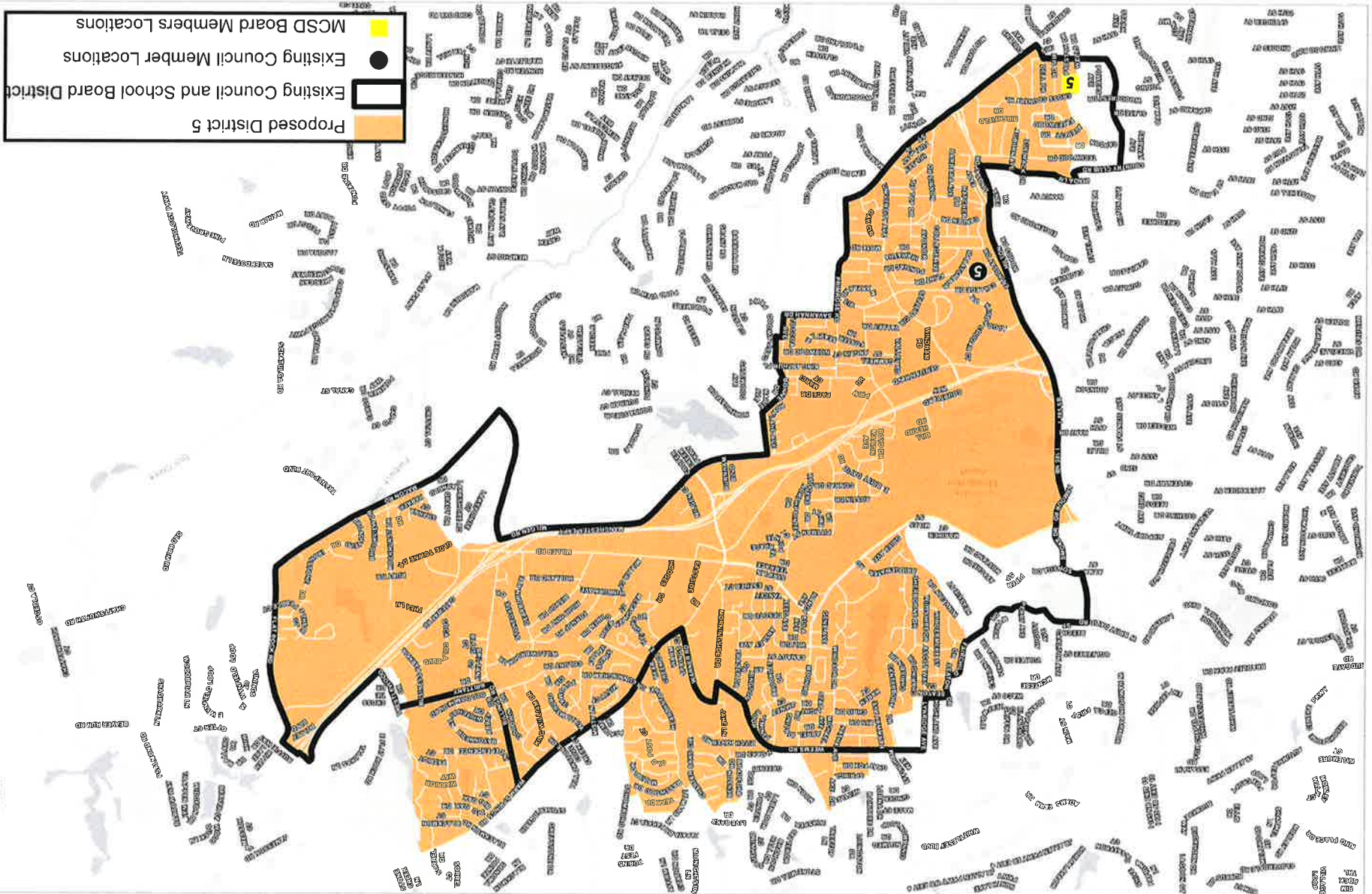
Not to Scale
 Projection: NAD 83
 Datum: State Plane GA West 1002



Planning Department
 Date: 12/6/2021



Proposed Council Districts Scenario J - District 5
 This map is a conceptual illustration of a possible future scenario. It is not intended to be used for legal purposes. The data contained in this map is subject to change. All information is believed to be correct but is not guaranteed.



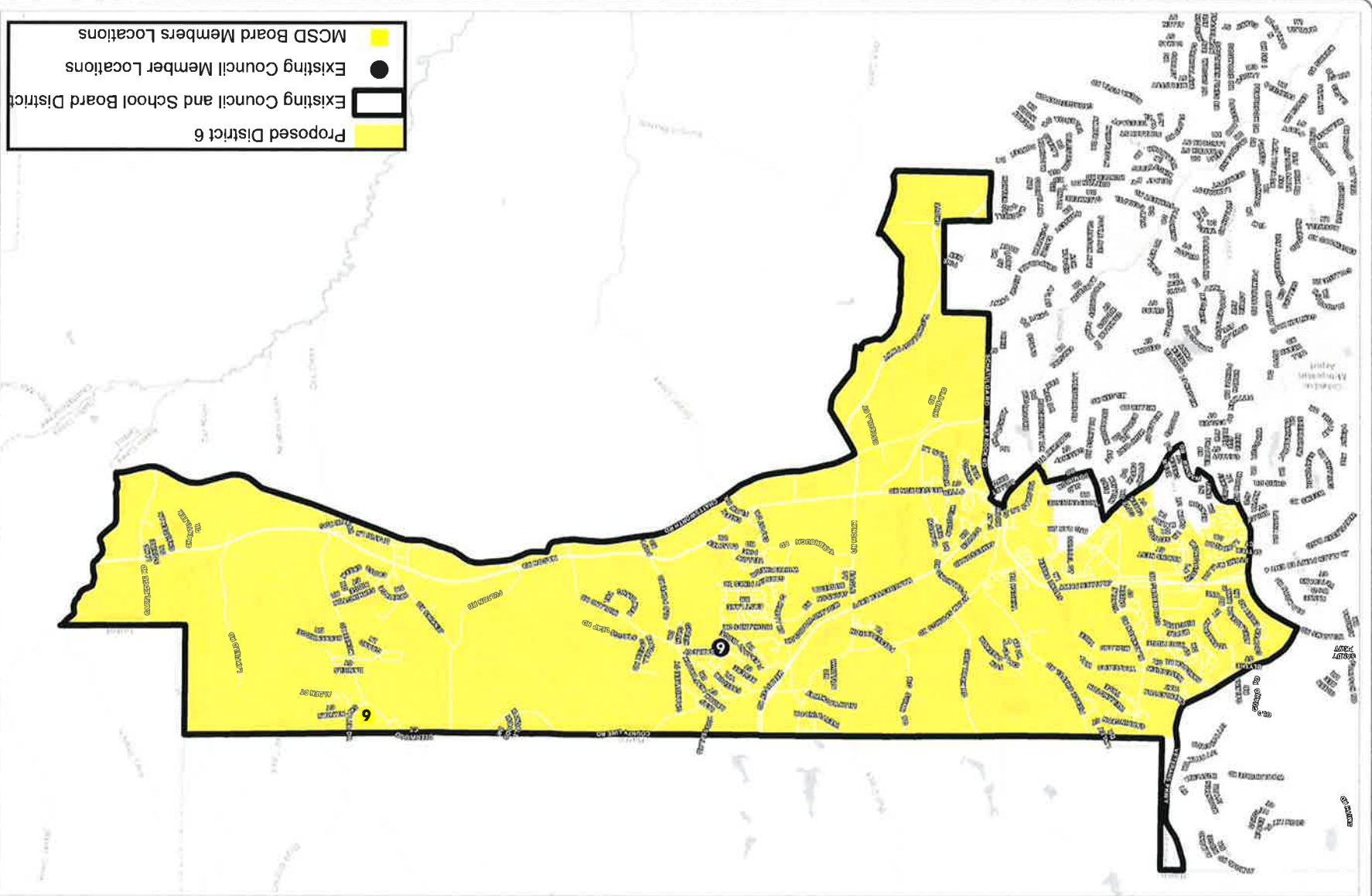
North Scale
 Projection: NAD 83
 Datum: State Plane GA West 1002



Planning Department
 Date: 12/6/2021



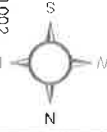
Proposed Council Districts Scenario J - District 6
 The map is not a guarantee of future action. It is a planning tool only. The map is subject to change. Map information is subject to be revised and not guaranteed.



- Proposed District 6
- Existing Council and School Board District
- Existing Council Member Locations
- MCSD Board Members Locations



Nat to Scale
 Projection: NAD 83
 Datum: State Plane CA West 11002

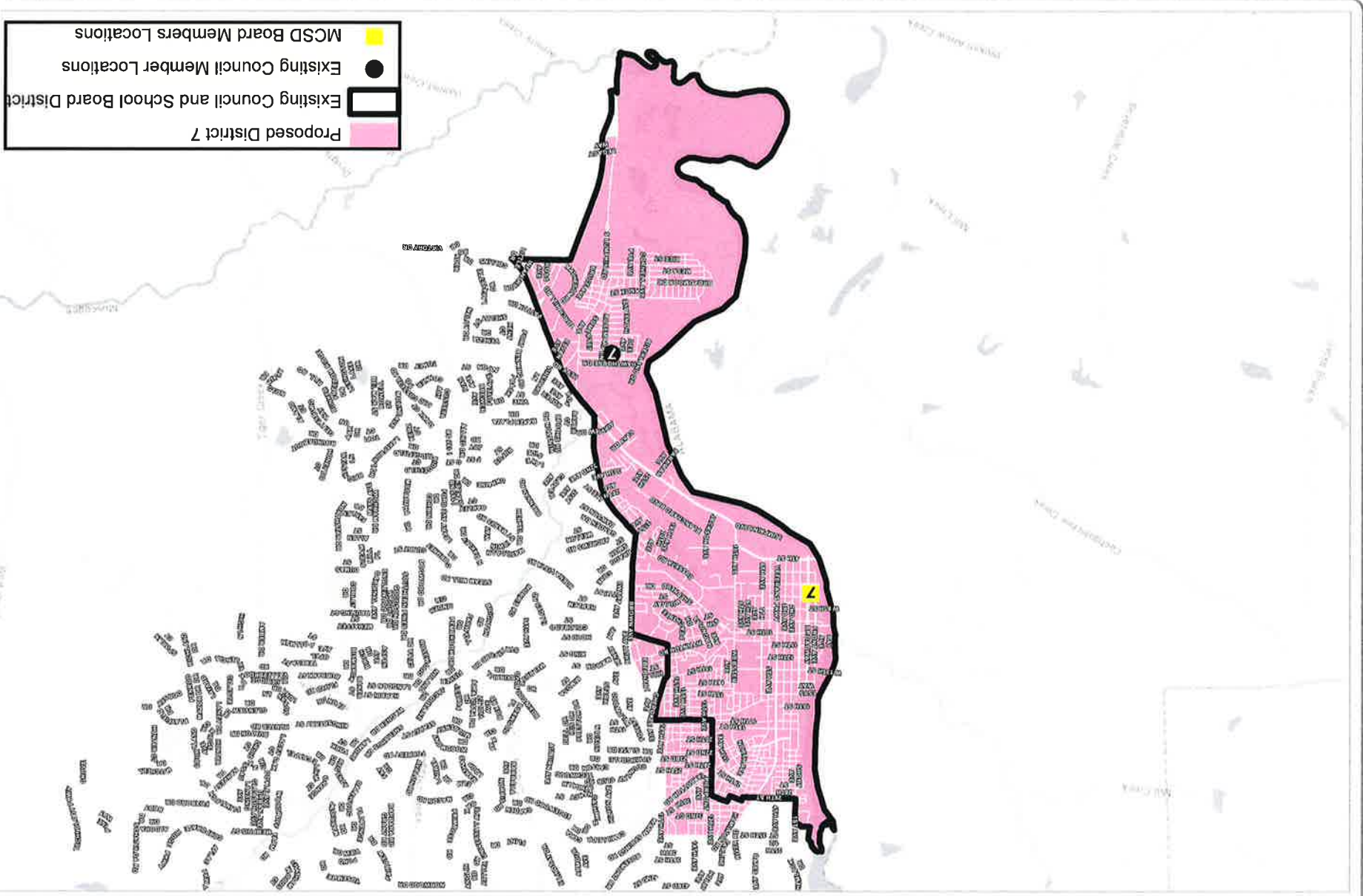


Planning Department
 Date: 12/6/2021



Proposed Council Districts Scenario J - District 7

This material is made available as a public service. Map information is believed to be correct but is not guaranteed. The date contained is subject to cartographic change. Map information is believed to be correct but is not guaranteed.



Not to Scale

Projection: NAD 83

Datum: State Plane GA West 1002

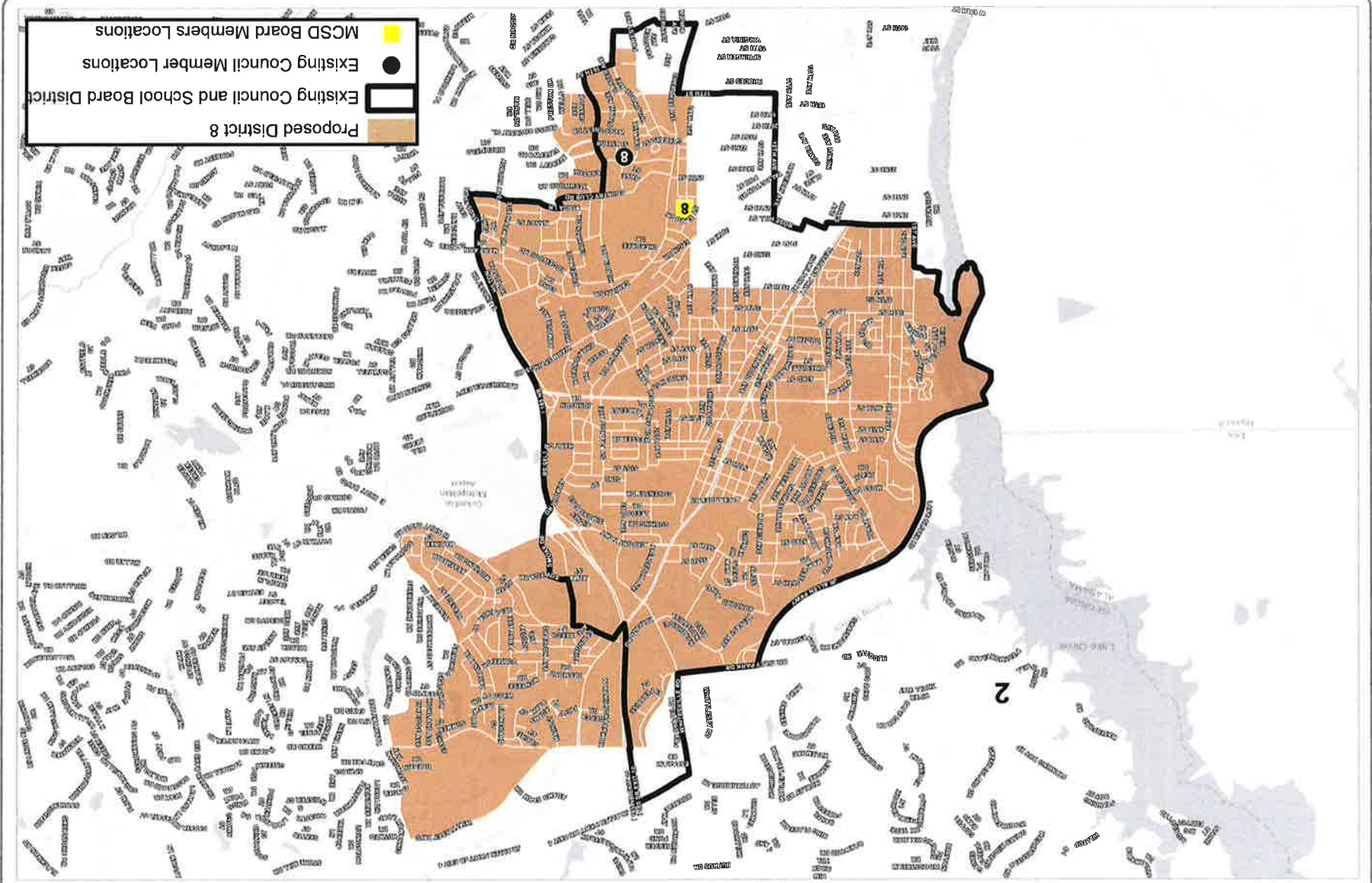


Planning Department
Date: 1/26/2021



Proposed Council Districts Scenario J - District 8

The information was prepared for public review. Maps and data are to be used for reference purposes only. The city reserves the right to make changes. Map information is believed to be correct but is not guaranteed.



Proposed District 8
 MCSD Board Members Locations
 Existing Council Member Locations
 Existing Council and School Board District

Not to Scale
 Projection: NAD 83
 Datum: State Plane GA West 1002 ft



Planning Department
 Date: 12/6/2021



Present Action

Under Section 6-102 of the City Charter, the Columbus City Council has six (6) months to enact the proposed Districting Plan by ordinance. As with any proposed ordinance, the Council may modify the proposed council districts provided the requirements of this section of the City Charter are met. If the proposed Districting Plan is not approved within six months, the proposed Districting Plan becomes enacted.

Future Action

The enacted Districting Plan must be submitted to the Georgia Legislative and Congressional Reapportionment Office for preclearance in advance of Council approval. The first reading of the ordinance will be Tuesday, December 7, 2021 at 9 AM. The second reading of the ordinance will not be heard until the Georgia Legislative and Congressional Reapportionment Office approves the proposed districting maps. Due to Charter requirements of Section 6-102 (5), all Councilors up for reelection in 2022 will run in their 2011-approved districts.

APPENDIX A

MEMBERS OF THE COLUMBUS
CONSOLIDATED GOVERNMENT
DISTRICTING COMMISSION

AND

COLUMBUS CONSOLIDATED GOVERNMENT
STAFF MEMBERS



We do amazing.

2021 COLUMBUS CONSOLIDATED GOVERNMENT DISTRICTING COMMISSION MEMBERS

Katie Bishop
13 7th Street
Columbus, Georgia 31901

Richard Boren
7555 Jenkins Road
Upatoi, GA 31829

Henriette Cain
118 Bedford Avenue
Columbus, Georgia 31907

Barbara Chambers
670 Parkchester Drive
Columbus, Georgia 31906

Oscar Daise
748 Quail Creek Drive
Columbus, Georgia 31907

Wayne Hailes
1705 Mazor Drive
Columbus, Georgia 31907

Byron Hickey
532 Honolulu Drive
Columbus, Georgia 31906

Dominick Perkins
1346 Virginia Street
Columbus, Georgia 31901

Mary Sue Polleys
1815 Stark Avenue
Columbus, Georgia 31906

U. D. Roberts
6850 Ranch Forest Drive
Columbus, Georgia 31904
David Rohwedder
2301 Slate Drive
Columbus, Georgia 31906

Edwin Roldan
7152 Willow Oak Drive
Columbus, Georgia 31909

Connie Smith
5600 Jamestown Drive
Columbus, Georgia 31909

Sue Smith
875 Graystone Drive
Columbus, Georgia 31904

Gloria Strode
6904 Pebble Court
Columbus, Georgia 31907

Carl Jerome Williams
815 6th Avenue
Columbus, Georgia 31901

Judge Marc D'Antonio
P.O. Box 1340
Columbus, Georgia 31902

COLUMBUS CONSOLIDATED GOVERNMENT STAFF MEMBERS

Pam Hodge
Deputy City Manager
Finance, Planning, & Development

Nancy Boren
Executive Director
Elections & Registration Office

Lucy Sheftall
Assistant City Attorney
City Attorney's Office

Rick Jones
Director
Planning Department

Will Johnson
Planning Division Manager
Planning Department

Rex Wilkinson
Planner
Planning Department

Scott Evans
GIS Coordinator
Information Technology Department

Mike King
Director
CCG-TV

Bruce Lee
Communication Specialist
CCG-TV

APPENDIX B

ADOPTING ORDINANCE AND LEGAL DESCRIPTION



We do amazing.

AN ORDINANCE

NO. _____

AN ORDINANCE ENACTING THE DISTRICTING PLAN SUBMITTED BY THE COLUMBUS CONSOLIDATED GOVERNMENT DISTRICTING COMMISSION ACCORDING TO SECTION 6-102 OF THE CHARTER OF COLUMBUS, GEORGIA REAPPORTIONING COUNCIL DISTRICT BOUNDARIES; AND FOR OTHER PURPOSES.

WHEREAS, the Columbus Consolidated Government Districting Commission duly organized and appointed according to Section 6-102 of the Charter of Columbus, Georgia, has submitted its report reapportioning Council District boundaries under the requirements of the Columbus Charter;

WHEREAS, the report includes a description of the Council Districts set forth herein, and a map of the districts which is hereto attached;

WHEREAS, it is the duty of the Council of Columbus, Georgia to enact this ordinance to reapportion Council Districts under the Columbus Charter.

NOW THEREFORE, THE COUNCIL OF COLUMBUS, GEORGIA HEREBY ORDAINS:

SECTION 1.

This report and plan reapportioning Council Districts, submitted by the Columbus Consolidated Government Districting Commission is hereby adopted according to the requirements of Section 6-102 of the Charter of Columbus, Georgia.

SECTION 2.

The Council Districts shall be apportioned as set forth below and as shown on the map, hereto attached, which is incorporated herein and specifically made as a part of this ordinance.

SECTION 3.

This ordinance shall be published according to Section 6-102 (3) and Section 3-206 of the Charter of Columbus, Georgia in its entirety, with descriptions of the Council Districts set forth and the map of said Council Districts hereto attached and published.

SECTION 4.

That the Council Districts shall be described as shown in the attached Districting Plan.

SECTION 5.

All ordinances or parts of ordinances in conflict with this ordinance are hereby repealed.

SECTION 6.

In accordance with Section 6-102 (5), the plan adopted by this Ordinance shall not apply to any primary, regular or special election held within six (6) months of the effective date of this Ordinance.

Introduced at a regular meeting of the Council of Columbus, Georgia held on the _____ day of _____, 2021; introduced a second time at a regular meeting of said Council held on the _____ day of _____, 2021 and adopted at said meeting by the affirmative vote of _____ members of said Council.

Councilor Allen	voting _____
Councilor Barnes	voting _____

Councilor Crabb
Councilor Davis
Councilor Garrett
Councilor House
Councilor Huff
Councilor Tucker
Councilor Thomas
Councilor Woodson

voting

voting

voting

voting

voting

voting

voting

voting

Sandra T Davis
Clerk of Council

B. H. "Skip" Henderson, III
Mayor

District 1

Tract: 10

Block(s): 2014

Tract: 20

Block(s): 1000, 1001, 1002, 1003, 1004, 1005, 1006, 1007, 1008, 1009, 1010, 1011, 1012, 1013, 1014, 1015, 1016, 1017, 1018, 1019, 1020, 2000, 2001, 2002, 2003, 2004, 2005, 2006, 2007, 2008, 2009, 2010, 2011, 2012, 2013, 2014, 2015, 2016, 2017, 2018, 2019, 2020, 2021, 2022, 2023, 2024

Tract: 21

Block(s): 1000, 1001, 1002, 1003, 1004, 1005, 1006, 1007, 1008, 1009, 1010, 1011, 1012, 1013, 1014, 1015, 2000, 2001, 2002, 2003, 2004, 2005, 2006, 2007, 2008, 2009, 2010, 2011, 2012, 2013, 2014, 2015, 2016, 2017, 2018, 2019, 2020, 2021, 2022, 2023, 2024

Tract: 29.01

Block(s): 1000, 1001, 1002, 1003, 1004, 1005, 1006, 1007, 1008, 1009, 1010, 1011, 1012, 1013, 1014, 1015, 1016, 2000, 2001, 2002, 2003, 2004, 2005, 2006, 2007, 2008, 2009, 2010, 2011, 2012, 2013, 2014, 3000, 3001, 3002, 3003, 3004, 3005, 3006, 3007, 3008, 3009, 3010, 3011, 3012, 3013, 3014

Tract: 105.01

Block(s): 1000, 1001, 1002, 1003, 1004, 1005, 1006, 1007, 1008, 1009, 1010, 1011, 1012, 1013, 1014, 1015, 1016, 2000, 2001, 2002, 2003, 2004, 2005, 2006, 2007, 2008, 2009, 2010, 2011, 2012, 2013, 2014, 2015, 2016, 2017, 2018, 2019, 2020, 2021, 2022, 2023, 2024, 2025, 2026, 2027, 3002, 3003, 3004, 3005, 3006, 3007, 3008, 3009, 3010, 3011, 3012, 3013, 3014, 3015, 3016, 3017, 3018, 3019, 4016, 4017, 4018, 4022, 4023, 4024, 4025, 4026, 4027, 4029

Tract: 105.02

Block(s): 1006, 1007, 1008, 1009, 1010, 1011, 1012, 1013

Tract: 106.02

Block(s): 1000, 1001, 1002, 1003, 1004, 1005, 1006, 1007, 1008, 1009, 1010, 1011, 1012, 1013, 1014, 1015, 1016, 1017, 1018, 1019, 1020, 1021, 1022, 1023, 1024, 2000, 2001, 2002, 2003, 2004, 2005, 2006, 2007, 2008, 2009, 3000, 3001, 3002, 3003, 3004, 3005, 3006, 3007, 3008, 3009, 3010, 3011, 3012, 3013, 3014, 3015, 3016, 3017, 3018, 3019, 3020, 3021, 3022, 3023, 3024

Tract: 106.05

Block(s): 1000, 1001, 1002, 1003, 1017, 1018

Tract: 107.01

Block(s): 3002, 3003, 3014, 3015, 3016, 3017, 3018, 3019, 3020, 3021, 3022, 3027

Tract: 107.02

Block(s): 2002, 2003, 2004, 2005, 2006, 2007, 2013, 2014, 2015, 2016, 3000, 3001, 3002, 3003, 3004, 3005, 3006, 3007, 3008, 3009, 3010, 3011, 3012, 3013, 3014, 3015, 3016, 3017, 3018, 3019, 3020, 3021, 3022, 3023, 3024, 3025, 3026, 3027, 3028, 3029, 3030, 3031

District 2

Tract: 4

Block(s): 1000, 1002, 2014

Tract: 102.05

Block(s): 1000, 1001, 1002, 1003, 1004, 1005, 1006, 1007, 2000, 2001, 2002, 2003, 2004, 2006, 2007, 2008, 2009, 2010, 2011, 2013, 2014, 2015, 2016, 2017, 2019

Tract: 102.06

Block(s): 1000, 1001, 1002, 1003, 1004, 1005, 1006, 1007, 1008, 1009, 1010, 2000, 2001, 2002, 2003

Tract: 102.07

Block(s): 1000, 1001, 1002, 1003, 1004, 1005, 1006, 1007, 1008, 1009, 1010, 2000, 2001, 2002, 2003, 2004, 2005, 2006, 2007, 2008, 2009, 2010, 2011, 2012, 2013, 2014, 2015, 2016, 2017, 2018, 2019

Tract: 102.09

Block(s): 1000, 1001, 1002, 1003, 1004, 1005, 1006, 1007, 1008, 1009, 1010, 1011, 1012, 1013, 1014, 1015, 1016, 1017, 1018, 1019, 1020, 1021, 1022, 1023, 2000, 2001, 2002, 2003, 2004, 2005, 2006, 2007, 2008, 2009, 2010, 2011, 2012, 2013, 2014, 2015, 2016, 2017, 2018, 2019, 2020, 2021, 2022, 2023, 2024, 2025, 2026, 2027, 2028, 2029, 2030, 2031, 2032, 2033, 2034

Tract: 103.01

Block(s): 1000, 1001, 1002, 1003, 1004, 1005, 1006, 1007, 1008, 1009, 1010, 1011, 1012, 1013, 2000, 2001, 2002, 2003, 2004, 2005, 2006, 2007, 2008, 2009, 2010, 2011, 2012, 2013, 2014, 2015, 2016, 2017, 2018

Tract: 103.03

Block(s): 1000, 1001, 1002, 1003, 1004, 1005, 1006, 1007, 1008, 1009, 1010, 1011, 1012, 2000, 2001, 2002, 2003, 2004, 2005, 2006, 2007, 2008, 2009, 2010, 2011, 2012, 2013, 2014, 2015, 2016, 2017, 2018, 2019, 2020, 2021, 2022, 2023, 2024, 2028, 2029

Tract: 103.04

Block(s): 1000, 1001, 1002, 1003, 1004, 1005, 1006, 1007, 1008, 1009, 1010, 1012, 1013, 1014, 1015, 1016, 1017, 1018, 1019, 1020, 1021, 1022, 1025, 1026, 1027, 1028, 1029, 1030, 1031, 1034, 1035, 1036, 1040, 1041, 1042, 1043, 1044

District 3

Tract: 11

Block(s): 1022, 1023, 1024, 1026, 1027, 1028, 1029, 1031

Tract: 12

Block(s): 2003, 2004, 2005, 2006, 2007, 2008, 2009, 2010, 2011, 2012, 2013, 2014, 2015, 2016, 2017, 2018, 2019, 2020, 2021, 3000, 3001

Tract: 22

Block(s): 1000, 1001, 1002, 1003, 1004, 1005, 1006, 1007, 1008, 1009, 1010, 1011, 1012, 1013, 1014, 1015, 1016, 1017, 2000, 2001, 2002, 2003, 2004, 2005, 2006, 2007, 2008, 2009, 2010, 2011, 2012, 2013, 2014, 2015, 3000, 3001, 3002, 3003, 3004, 3005, 3006, 3007, 3008, 3009, 3010, 3011, 3012, 3013, 3014, 3015, 3016, 3017, 3018, 3019, 3020, 3021, 3022, 3023, 3024, 3025, 3026, 3027, 3028, 3029, 3030, 3031

Tract: 27

Block(s): 2000, 2001

Tract: 28

Block(s): 1000, 1001, 1002, 1003, 1004, 1005, 1006, 1007, 1008, 2000, 2001, 2002, 2003, 2004, 2005, 2006, 2007, 2008, 2009, 2010, 2011, 2012, 2013, 2014, 2015, 2016, 2017, 2018, 2019, 2020, 2021, 2022, 2023, 2024, 2025, 2026, 2027, 2028, 2029, 2030, 2031, 2032, 2033, 2034, 2035, 2036, 2037, 2038, 2039

Tract: 29.02

Block(s): 1000, 1001, 1002, 1003, 1004, 1005, 1006, 1007, 1008, 1009, 1010, 1011, 1012, 1013, 1014, 1015, 1016, 1017, 1018, 1019, 2000, 2001, 2002, 2003, 2004, 2005, 2006, 2007, 2008, 2009, 2010, 2011, 2012, 2013, 3000, 3001, 3002, 3003, 3004, 3005, 3006, 3007, 3008, 3009, 3010, 3011, 3012, 3013, 3014, 3015, 3016, 3017

Tract: 30

Block(s): 1000, 1001, 1002, 1003, 1004, 1005, 1006, 1007, 1008, 1009, 1010, 2000, 2001, 2002, 2003, 2004, 2005, 2006, 2007, 2008, 2009, 2010, 2011, 2012, 2013, 2014, 2015, 2016, 2017, 2018, 3000, 3001, 3002, 3003, 3004, 3005, 3006, 3007, 3008, 3009, 3010

Tract: 32

Block(s): 1000, 1001, 1002, 1003, 1004, 1005, 1006, 1007, 1008, 1009, 2000, 2001, 2002, 2003, 2004, 3000, 3001, 3002, 3003, 3004, 3005, 3006, 3007

Tract: 33.01

Block(s): 1000, 1001, 1002, 1003, 1004, 1005, 1006, 1007, 1008, 1009, 1010, 1011, 1012, 1013, 1014, 1015, 1016, 1017, 1018, 1019, 1020, 1021, 1022, 1023, 1024

Tract: 33.02

Block(s): 1000, 1001, 1002, 1003, 1004, 1005, 1006, 1007, 1008, 1009, 1010, 1011, 1012, 1013, 1014, 1015, 2000, 2001, 2002, 2003, 2004, 2005, 2006, 2007, 2008, 2009, 2010, 2011, 2012, 2013, 2014, 2015, 2016, 3000, 3001, 3002, 3003, 3004, 3005, 3006, 3007, 3008, 3009, 3010, 3011, 3012, 3013, 3014

Tract: 34

Block(s): 1008, 3000, 3016

Tract: 107.04

Block(s): 1000, 1001, 1002, 1003, 1004, 2000, 2001, 2002, 2003, 2004, 2005, 3000, 3001, 3002, 3003, 3004, 3005, 3006, 3007, 3008, 3009, 3010, 3011, 3012, 3013, 3014, 3015, 3016, 3017, 3018, 3019, 3020, 3021, 3022, 3023

Tract: 107.05

Block(s): 1000, 1001, 1002, 1003, 1004, 1005, 1006, 1007, 1008, 1009, 1010, 1011, 1012, 2000, 2001, 2002, 2003, 2004, 2005, 2006, 2007, 2008, 2009, 2010, 2011, 2012, 2013, 2014

Tract: 108.01

Block(s): 1000, 1001

Tract: 112

Block(s): 1022

District 4

Tract: 105.02

Block(s): 1002, 1003, 1004, 1005, 1014, 1015, 1016, 1017, 1018, 1019

Tract: 106.05

Block(s): 1004, 1005, 1006, 1007, 1008, 1009, 1010, 1011, 1012, 1013, 1014, 1015, 1016, 2000, 2001, 2002, 2003, 2004, 2005, 2006, 2007, 2008, 2009, 2010, 2011, 2012, 2013, 2014, 2015, 2016, 2017, 2018, 2019, 2020

Tract: 106.06

Block(s): 1001, 1002, 1004, 1005

Tract: 106.07

Block(s): 1000, 1001, 1002, 1003, 1004, 1005, 1006, 1007, 2000, 2001, 2002, 2003, 2004, 2005, 2006, 2007, 2008, 2009, 2010, 2011, 2012, 2013, 2014, 2015, 2016, 2017, 2018, 2019, 2020, 2021, 3000, 3001, 3002, 3003, 3004, 3005, 3006, 3007, 3008, 3009, 3010, 3011, 3012, 3013, 3014

Tract: 106.08

Block(s): 1000, 1001, 1002, 1003, 1004, 1005, 1006, 1007, 1008, 1009, 1010, 1011, 1012, 1013, 1014, 1015, 2000, 2001, 2002, 2003, 2004, 2005, 2006, 2007, 2008, 2009, 2010, 2011, 2012, 2013, 2014, 2015, 2016, 2017, 2018, 2019, 2020, 2021, 2022

Tract: 107.01

Block(s): 1000, 1001, 1002, 1003, 1004, 1005, 1006, 1007, 1008, 1009, 1010, 1011, 1012, 1013, 1014, 2000, 2001, 2002, 2003, 2004, 2005, 2006, 2007, 2008, 2009, 2010, 2011, 2012, 2013, 2014, 2015, 2016, 2017, 2018, 2019, 2020, 3000, 3001, 3004, 3005, 3006, 3007, 3008, 3009, 3010, 3011, 3012, 3013, 3023, 3024, 3025, 3026, 3028, 3029, 3030, 3031, 3032, 3033

Tract: 107.02

Block(s): 1000, 1001, 1002, 1003, 1004, 1005, 1006, 1007, 1008, 1009, 2000, 2001, 2008, 2009, 2010, 2011, 2012, 2017, 2018, 2019, 2020, 2021, 2022, 2023

District 5

Tract: 10

Block(s): 1000, 1001, 1002, 1003, 1006, 1007, 1008, 1010, 1011, 1012, 1013, 1014, 1015, 1016, 1017, 1018, 1019, 1020, 1021, 1022, 1023, 1024, 1025, 1026, 1027, 1028, 1029, 1030, 1031, 1032, 2000, 2001, 2002, 2003, 2004, 2005, 2006, 2007, 2008, 2009, 2010, 2011, 2012, 2013, 2015, 2016, 2017, 2018, 2019, 2020, 2021, 3000, 3001, 3002, 3003, 3004, 3005, 3006, 3007, 3008, 3009, 3010, 3011, 3012, 3013, 3014, 3015, 3016, 3017

Tract: 11

Block(s): 1000, 1001, 1002, 1003, 1004, 1007, 1008, 1009, 1010, 1011, 1012, 1016, 1017, 1018, 1019, 1020, 1021, 1025, 1030

Tract: 101.06

Block(s): 1000, 1001, 1002, 1003, 1004, 1005, 1006, 1007, 1008, 2007, 2008, 2009, 2010, 2011, 2012, 2013, 2014, 2015, 2016, 2018, 2019, 2020, 2021, 2022, 2023, 2024, 3000, 3001, 3002, 3003, 3004, 3005, 3006, 3007, 3008, 3009, 3010, 3011, 3012, 3013, 3014, 3015, 3016, 3017, 3018, 3019, 3020, 3021, 3022

Tract: 101.08

Block(s): 1000, 1001, 1002, 1003, 1004, 1005, 1006, 1007, 1008, 2000, 3001, 3002, 3003, 4000, 4001, 4002

Tract: 102.04

Block(s): 1002, 1003, 1004, 1005, 1006, 1010, 1011, 1012, 1013, 3004, 3009, 3010, 3011, 3012, 3013, 3014, 3015, 3016, 3017, 3018, 3019, 3020, 3021, 3022

Tract: 102.05

Block(s): 2012, 2018, 2020, 2021

Tract: 104.01

Block(s): 1000, 1001, 1002, 1003, 1004, 1005, 1006, 1007, 1008, 1009, 1010, 1011, 1012, 1013, 1014, 1015, 1016, 2000, 2001, 2003, 2005, 2007, 2008, 2009, 2010, 2011, 2012, 2013, 2014, 2015, 2016, 2022, 2023

Tract: 104.02

Block(s): 1000, 1001, 1003, 1004, 1009, 1012, 1013, 1020, 1021, 1022, 1023, 1024, 2000, 2001, 2002, 2003, 2004, 2005, 2006, 2007, 2008, 2009, 2010, 2011, 2012, 2013, 2014, 2015, 2016, 2017, 2018, 2019, 2020, 2021, 2022, 2023, 2024, 2025, 2026, 2027, 2028, 2029, 2030, 2031, 2032, 2033, 2034, 3000, 3001, 3002, 3003, 3004, 3005, 3006, 3007, 3008, 3009, 3010, 3011, 3012, 3013, 3014, 3015, 3016, 3017, 3018, 3019, 3020, 3021, 3022, 3023

Tract: 105.01

Block(s): 3000, 3001, 3020, 4000, 4001, 4002, 4003, 4004, 4005, 4006, 4007, 4008, 4009, 4010, 4011, 4012, 4013, 4014, 4015, 4019, 4020, 4021, 4028

District 6

Tract: 101.06
Block(s): 2000, 2001, 2002, 2003, 2004, 2005, 2006, 2017

Tract: 101.08
Block(s): 3000

Tract: 101.09
Block(s): 1000, 1001, 1002, 1003, 1004, 1005, 1006, 1007, 1008, 1009, 1010, 1011, 1012, 1013, 1014

Tract: 101.10
Block(s): 1000, 1001, 1002, 1003, 1004, 1005, 1006, 1007, 1008, 1009, 1010, 1011, 1012, 1013, 1014, 1015, 1016, 1017, 1018, 1019, 1020, 1021, 1022, 1023, 1024, 1025, 1026, 1027, 1028, 1029, 1030, 1031, 1032, 1033, 1034, 1035, 1036, 1037, 1038

Tract: 101.11
Block(s): 1000, 1001, 1002, 1003, 1004, 1005, 1006, 1007, 1008, 1009, 1010, 1011, 1012, 1013, 1014, 1015, 1016, 1017, 1018, 1019, 1020, 1021, 1022, 1023, 1024, 1025, 1026, 1027, 1028, 1029, 1030, 1031, 1032, 1033, 1034, 1035, 1036, 1037, 1038, 1039, 1040, 1041, 1042, 2000, 2001, 2002, 2003, 2004, 2005, 2006, 2007, 2008, 2009, 2010, 2011, 2012, 2013, 2014, 2015, 2016, 2017, 2018, 2019, 2020, 2021, 2022, 2023, 2024, 3000, 3001, 3002, 3003, 3004, 3005, 3006, 3007, 3008, 3009, 3010, 3011, 3012, 3013, 3014, 3015, 3016, 3017, 3018, 3019, 3020, 3021, 3022, 3023, 3024, 3025, 3026, 3027, 3028, 3029, 3030, 3031, 3032, 3033, 3034, 3035, 3036

Tract: 102.04
Block(s): 1000, 1001, 1007, 1008, 1009, 2000, 2001, 2002, 2003, 2004, 2005, 2006, 2007, 2008, 2009, 2010, 2011, 2012, 2013, 2014, 2015, 2016, 3000, 3001, 3002, 3003, 3005, 3006, 3007, 3008

Tract: 102.08
Block(s): 1000, 1001, 1002, 1003, 1004, 1005, 1006, 1007, 1008, 1009, 1010, 1011, 1012, 1013, 1014, 1015, 2000, 2001, 3000, 3001, 3002, 3003, 3004, 3005, 3006, 3007, 3008, 3009, 3010, 3011, 3012, 3013, 3014, 3014

Tract: 105.02
Block(s): 1000, 1001

Tract: 106.06
Block(s): 1000, 1003

Tract: 108.02
Block(s): 1010, 1011, 1016, 1019, 1020, 1021, 1022, 1023, 1024, 1059, 1179, 1180, 1181, 1182, 1183

District 7

Tract: 3

Block(s): 1039

Tract: 8

Block(s): 1000, 1001, 1002, 1003, 1004, 1005, 1006, 1007, 1008, 1009, 1010, 1011, 1012, 1013, 1014, 1015, 1016, 1017, 1018, 1019, 1020, 1021, 1022, 1023, 1024, 1025, 1026, 1027

Tract: 12

Block(s): 1017, 1035, 1036, 3002, 3003, 3004, 3005, 3006, 3007, 3008, 3009, 3010, 3011, 3012, 3013, 3014, 3015, 3016, 3017, 3018, 3019, 3020, 3021

Tract: 14

Block(s): 1000, 1001, 1002, 1003, 1004, 1005, 1006, 1007, 1008, 1009, 1010, 1011, 1012, 1013, 1014, 1015, 1016, 1017, 2000, 2001, 2002, 2003, 2004, 2005, 2006, 2007, 2008, 2009, 2010, 2011, 2012, 2013, 2014, 2015, 2016, 2017, 2018, 2019, 2020, 2021, 2022, 2023, 2024, 2025, 2026, 2027, 2028, 2029, 2030, 2031, 2032, 2033, 2034

Tract: 16

Block(s): 1002, 1003, 1004, 1005, 1006, 1007, 1009, 1010, 1011, 1012, 1013, 1014, 1015, 1019, 1020, 1021, 1022, 1023, 1024, 1025, 1026, 1027, 1028, 1029, 1030, 1031, 1032, 1033, 1034, 1035, 1036, 1037, 1038, 1039, 1040, 1041, 1042, 1043, 1044, 1045, 2021, 2022, 2023, 2024, 2025

Tract: 18

Block(s): 1000, 1001, 1002, 1003, 1004, 1005, 1006, 1007, 1008, 1009, 1010, 1011, 1012, 1013, 1014, 1015, 1016, 1017, 1018, 1019, 1020, 1021, 1022, 1023, 1024, 1025, 1026, 1027, 1028, 1029, 1030, 1031, 1032, 1033, 1034, 1035, 1036, 1037, 1038, 1039, 1040, 1041, 1042, 1043, 1044, 1045, 1046, 1047, 1048, 1049, 1050, 1051, 1052

Tract: 23

Block(s): 1000, 1001, 1002, 1003, 1004, 1005, 1006, 1007, 1008, 1009, 1010, 1011, 1012, 1013, 1014, 1015, 1016, 1017, 1018, 1019, 1020, 1021

Tract: 24

Block(s): 1000, 1001, 1002, 1003, 1004, 1005, 1006, 1007, 1008, 1009, 1010, 1011, 1012, 1013, 1014, 1015, 1016, 1017, 1018, 1019, 1020, 1021

Tract: 25

Block(s): 1000, 1001, 1002, 1003, 1004, 1005, 1006, 1007, 1008, 1009, 1010, 1011, 1012, 1013, 1014, 1015, 1016, 1017, 1018, 1019, 1020, 1021, 1022, 1023, 1024, 1025, 1026, 1027, 1028, 1029, 1030, 1031, 1032, 1033, 1034, 1035, 1036, 1037, 1038, 1039, 1040, 2000, 2001, 2002, 2003, 2004, 2005, 2006, 2007, 2008, 2009, 2010

Tract: 27

Block(s): 1000, 1001, 1002, 1003, 1004, 1005, 1006, 1007, 1008, 1009, 1010, 1011, 1012, 1013, 2002, 2003, 2004, 2005, 2006, 2007, 2008, 2009, 2010, 2011, 2012, 2013, 2014, 2015, 2016, 2017, 2018, 2019, 2020, 2021, 2022, 2023, 2024, 2025, 2026, 2027

Tract: 34

Block(s): 1000, 1001, 1002, 1003, 1004, 1005, 1006, 1007, 1009, 2000, 2001, 2002, 2003, 2004, 2005, 2006, 2007, 2008, 2009, 2010, 2011, 2012, 2013, 2014, 2015, 2016, 2017, 2018, 2019, 3001, 3002, 3003, 3004, 3005, 3006, 3007, 3008, 3009, 3010, 3011, 3012, 3013, 3014, 3017

Tract: 111

Block(s): 1000, 1001, 1002, 1003, 1004, 1005, 1006, 1007, 1008, 1009, 1010, 1011, 1012, 1013, 1014, 1015, 1016, 1017, 1018, 1019, 1020, 1021, 1022, 1023, 1024, 1025, 1026, 1027, 1028, 1029, 1030, 1031, 1032, 1033, 1034, 1035, 1036, 1037, 1038, 1039, 1040, 1041, 1042, 1043, 1044, 1045, 1046, 1047, 1048, 1049, 1050, 1051, 1052, 1053, 2003, 2004, 2005, 2006, 2007, 2008, 2009, 2010, 2011, 2012, 2013, 2014, 2015, 2016, 2017, 2018, 2019, 2020, 2021, 2022, 2023, 2024, 2025, 2026, 2027, 2028, 2029, 2030, 2031, 2032, 2033, 2034, 2035, 2036, 2037, 2038, 2039, 2040, 2041, 2042, 2043, 2044, 2045, 2046, 2047, 2048, 2049, 2050, 2051, 2052, 2053, 2054, 2055, 2056, 2057, 2058, 2059, 2060, 2061, 2062, 2063, 2064, 2065, 2066, 2067, 2068, 2069, 2070, 2071, 2072, 2073, 2074, 2075, 2076, 2077, 2078, 2079, 2080, 2081, 2082, 2083, 2084, 2085, 2086, 2087

Tract: 112

Block(s): 1001, 1002, 1003, 1004, 1005, 1006, 1007, 1008, 1009, 1010, 1011, 1012, 1013, 1014, 1015, 1016, 1017, 1018, 1019, 1020, 1021, 1023, 1024, 1025, 1026, 1027, 1028, 1029, 1030, 1031, 1032, 1033, 1034, 1035, 1036, 1037, 1038, 2000, 2001, 2002, 2003, 2004, 2005, 2006, 2007, 2008, 2009, 2010, 2011, 2012, 2013, 2014, 2015, 2016, 2017, 2018, 2019, 2020, 2021, 2022, 2023

Tract: 115

Block(s): 1000, 1001, 1002, 1003, 1004, 1005, 1006, 1007, 1008, 1009, 1010, 1011, 1012, 2000, 2001, 2002, 2003, 2004, 2005, 2006, 2007, 2008, 2009, 2010, 2011, 3000, 3001, 3002, 3003, 3004, 3005, 3006, 3007, 3008, 3009, 3010, 3011, 3012, 3013, 3014, 3015, 3016, 3017, 3018, 4000, 4001, 4002, 4003, 4004, 4005, 4006, 4007, 4008, 4009, 4010, 4011, 4012, 4013, 4014, 4015, 4016, 4017, 4018, 4019, 4020, 4021, 4022, 4023, 4024, 4025, 4026, 4027, 4028, 5000, 5001, 5002, 5003, 5004, 5005, 5006, 5007, 5008, 5009, 5010, 5011, 5012, 5013, 5014, 5015, 5016, 5017, 5018, 5019, 5020, 5021, 5022, 5023, 5024, 5025, 6000, 6001, 6002, 6003, 6004, 6005, 6006, 6007, 6008, 6009, 6010

District 8

Tract: 2

Block(s): 1000, 1001, 1002, 1003, 1004, 1005, 1006, 1007, 1008, 1009, 1010, 1011, 1012, 1013, 1014, 1015, 1016, 1017, 1018, 1019, 1020, 1021, 1022, 1023, 1024, 1025, 1026, 1027, 2000, 2001, 2002, 2003, 2004, 2005, 2006, 2007, 2008, 2009, 2010, 2011, 2012, 2013, 2014, 2015, 2016, 2017, 2018, 2019, 2020, 2021, 2022, 2023, 2024, 2025, 2026, 2027, 2028, 2029, 2030, 2031, 2032, 2033, 2034, 2035, 2036, 2037

Tract: 3

Block(s): 1000, 1001, 1002, 1003, 1004, 1005, 1006, 1007, 1008, 1009, 1010, 1011, 1012, 1013, 1014, 1015, 1016, 1017, 1018, 1019, 1020, 1021, 1022, 1023, 1024, 1025, 1026, 1027, 1028, 1029, 1030, 1031, 1032, 1033, 1034, 1035, 1036, 1037, 1038, 1040, 2000, 2001, 2002, 2003, 2004, 2005, 2006, 2007, 2008, 2009, 2010, 2011, 2012, 2013, 2014, 2015, 2016, 2017, 2018, 2019, 2020, 2021, 2022, 2023, 2024, 2025, 2026, 2027, 2028, 2029, 2030, 2031, 2032, 2033, 2034, 2035, 2036, 2037, 2038, 2039, 2040, 2041, 2042, 2043, 2044, 2045, 2046, 2047, 2048, 2049, 2050, 2051, 2052, 2053, 2054

Tract: 4

Block(s): 1001, 1003, 1004, 1005, 1006, 1007, 1008, 1009, 1010, 1011, 1012, 1013, 1014, 1015, 1016, 1017, 1018, 1019, 1020, 1021, 1022, 1023, 1024, 1025, 1026, 1027, 1028, 2000, 2001, 2002, 2003, 2004, 2005, 2006, 2007, 2008, 2009, 2010, 2011, 2012, 2013, 2015, 2016, 2017, 2018, 2019, 2020, 2021, 2022, 2023, 2024, 2025, 2026, 2027, 2028, 2029, 3000, 3001, 3002, 3003, 3004, 3005, 3006, 3007, 3008, 3009, 3010, 3011

Tract: 8

Block(s): 2000, 2001, 2002, 2003, 2004, 2005, 2006, 2007, 2008, 2009, 2010, 2011, 2012, 2013, 2014, 2015, 2016, 2017, 2018, 2019, 2020, 2021, 2022, 2023, 2024, 2025, 2026, 2027, 2028, 2029, 2030, 2031, 2032, 2033, 2034, 2035, 2036, 2037, 2038

Tract: 9

Block(s): 1000, 1001, 1002, 1003, 1004, 1005, 1006, 1007, 1008, 1009, 1010, 1011, 1012, 1013, 1014, 1015, 1016, 1017, 1018, 1019, 1020, 1021, 1022, 1023, 1024, 1025, 2000, 2001, 2002, 2003, 2004, 2005, 2006, 2007, 2008, 2009, 2010, 2011, 2012, 2013, 2014, 2015

Tract: 10

Block(s): 1004, 1005, 1009

Tract: 11

Block(s): 1005, 1006, 1013, 1014, 1015, 2000, 2001, 2002, 2003, 2004, 2005, 2006, 2007, 2008, 2009, 2010, 2011, 2012, 2013, 2014, 2015, 2016, 2017, 2018, 2019, 2020, 2021, 2022, 2023, 2024, 2025, 2026, 2027, 2028, 2029, 2030, 2031

Tract: 12

Block(s): 1000, 1001, 1002, 1003, 1004, 1005, 1006, 1007, 1008, 1009, 1010, 1011, 1012, 1013, 1014, 1015, 1016, 1018, 1019, 1020, 1021, 1022, 1023, 1024, 1025, 1026, 1027, 1028, 1029, 1030, 1031, 1032, 1033, 1034, 1037, 1038, 1039, 1040, 1041, 2000, 2001, 2002

Tract: 16

Block(s): 1000, 1001, 1008, 1016, 1017, 1018, 2000, 2001, 2002, 2003, 2004, 2005, 2006, 2007, 2008, 2009, 2010, 2011, 2012, 2013, 2014, 2015, 2016, 2017, 2018, 2019, 2020

Tract: 102.05

Block(s): 2005

Tract: 103.03

Block(s): 2025, 2026, 2027

Tract: 103.04

Block(s): 1011, 1023, 1024, 1032, 1033, 1037, 1038, 1039

Tract: 104.01

Block(s): 2002, 2004, 2006, 2017, 2018, 2019, 2020, 2021, 2024, 2025, 2026, 2027, 2028, 2029, 2030, 2031, 2032, 2033, 3000, 3001, 3002, 3003, 3004, 3005, 3006, 3007, 3008, 3009, 3010, 3011, 3012, 3013, 3014, 3015, 3016, 3017, 3018, 3019, 3020, 3021, 3022, 3023, 3024, 3025, 3026, 3027, 3028, 3029, 3030, 3031, 3032, 3033, 3034

Tract: 104.02

Block(s): 1002, 1005, 1006, 1007, 1008, 1010, 1011, 1014, 1015, 1016, 1017, 1018, 1019

Tract: 111

Block(s): 2000, 2001, 2002

Tract: 112

Block(s): 1000

Tract: 114

Block(s): 1000, 1001, 1002, 1003, 1004, 1005, 1006, 1007, 1008, 1009, 1010, 1011, 1012, 1013, 1014, 1015, 1016, 1017, 1018, 1019, 1020, 1021, 1022, 1023, 1024, 1025, 1026, 1027, 2000, 2001, 2002, 2003, 2004, 2005, 2006, 2007, 2008, 2009, 2010, 2011, 2012, 2013, 2014, 2015, 2016, 2017, 2018, 2019, 2020, 2021, 2022, 2023