

Integrated Health Care

A Collaborative Partnership

between

New Horizons Behavioral Health

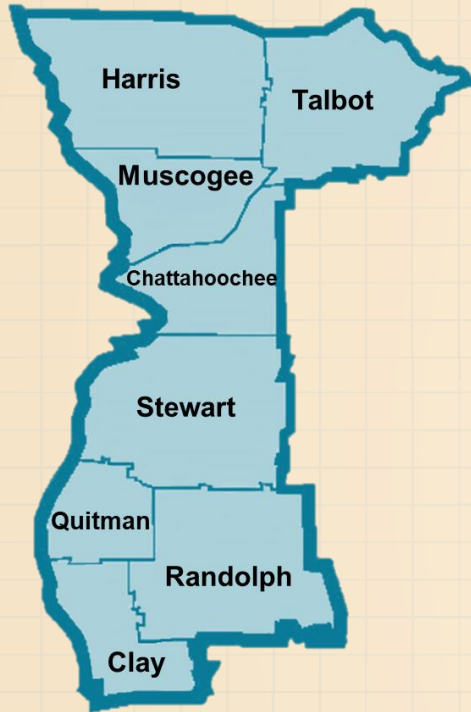
and

Tree of Life Healthcare, Inc.



New Horizons Behavioral Health

Serving the Chattahoochee Valley for over 40 Years



- **Over 22 Program Locations;**
- **400 + Professionals and Support Staff;**
- **Mental Health Services imbedded in (3) School Districts;**
- **46 Housing Units Serving 120 Individuals;**
- **And MORE...**

Building Better Lives is Our Mission!

2019 At A Glance:

136,282 Encounters to 8,412 Individuals

New Horizons Behavioral Health is a Tier 1 Community Service Board and Behavioral Health SAFETY-NET.



We are a Fee-For-Service Organization and Bill Medicaid, Medicare, State Grant-In-Aid Funds and Private Insurance

6,641 Adults in NHBH Services

- 85,003 Mental Health Service Encounters
- 37,807 Substance Use Disorder Encounters

1,489 Children & Adolescents in NHBH Services

- 13,472 Service Encounters
- 1,266 encounters for Family Outpatient Services.

165 Adults in I/DD Services with NHBH

- Community Access
- Pre-Vocational and Supported Employment
- Residential Supports



In FY 2019 we served 910 individuals with No Payer Source.

Tree of Life Healthcare, Inc. is a non-profit medical and eye clinic in Columbus, Georgia designed to serve the needs of patients without health insurance, the underserved and others, with quality and compassionate care.

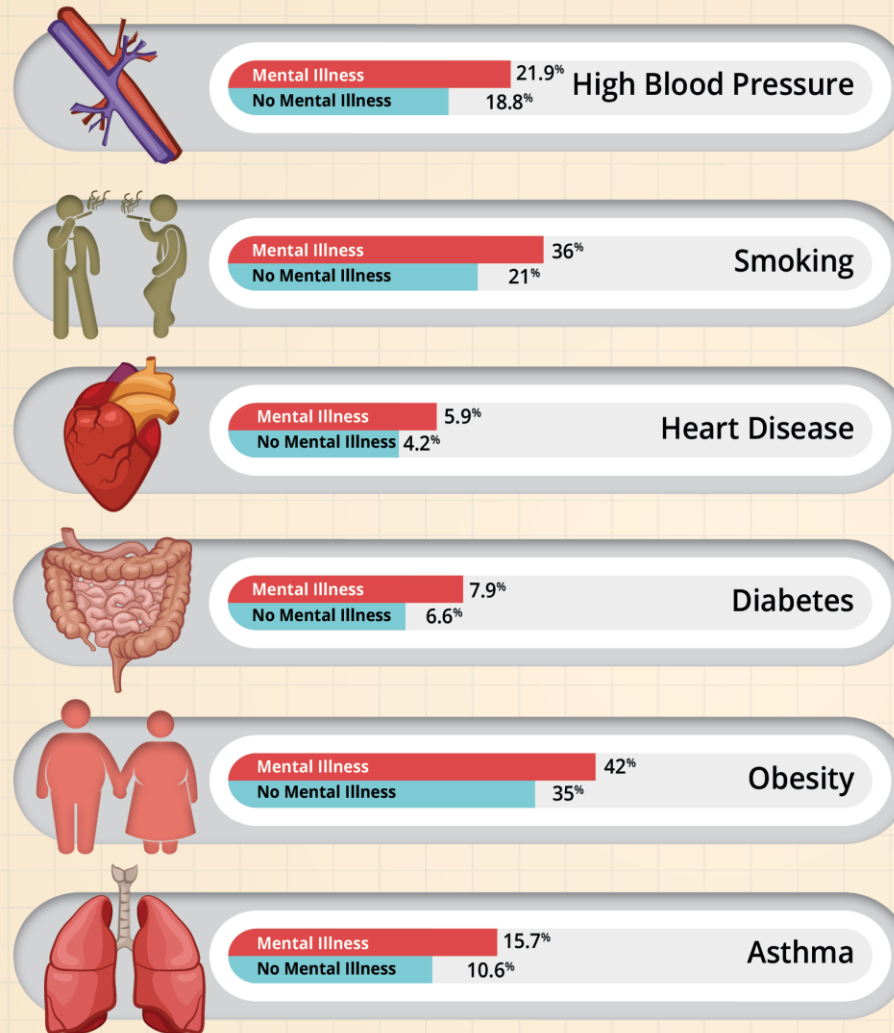
Tree of Life has been providing affordable services to Columbus since 2014.

ToLH has been recognized by the Georgia State Assembly and Columbus City Council with Proclamations lauding its work.



“Our mission is to demonstrate the love of Jesus Christ by providing quality healthcare to the uninsured and underserved of the Columbus community, West Georgia and East Alabama.”

The Deadly Intersection of Mental & Physical Health



Individuals with a Chronic Mental Illness have a Life Expectancy 20 years LESS than the general population!

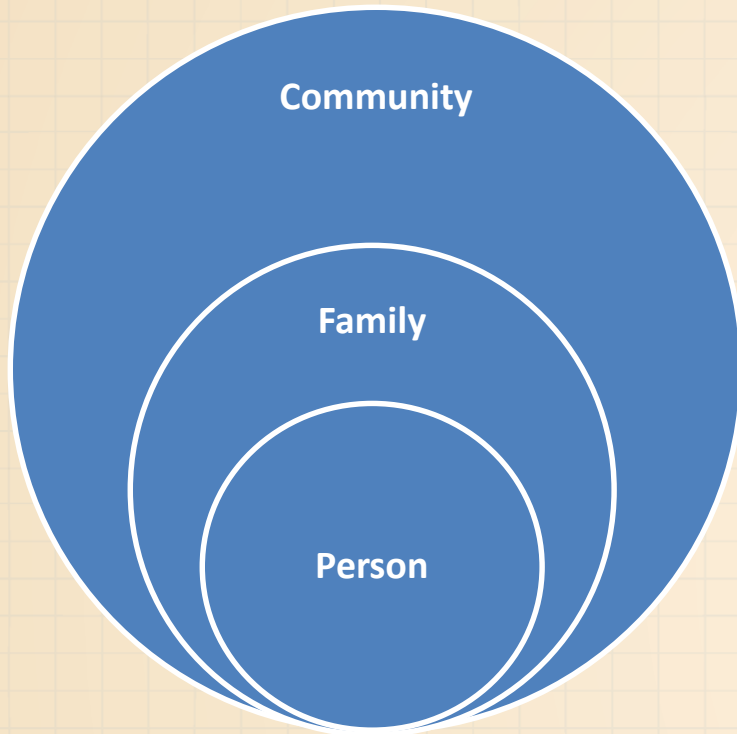
Social Determinants of Health

Muscogee County

- 49% of Children in Single Parent Households
- 13% Uninsured
- 11% of Households with 0 Vehicles Available
- 13% have less than a High School Education
- 21% Living in Poverty (30% of all Children)
- 6.1% Unemployment Rate
- 21% Report Food Insecurity

Muscogee County ranks 101 out of 159 counties in Georgia for Overall Health.

Why Should Local Leaders and Policy Makers Care?



Having a Mental Illness makes Life Challenging for Individuals, Families and Communities.

- **1 in 5** People are Living with a Mental Illness.
- **8.4 Million** Americans care for an Adult with an Emotional or Mental Illness.
- **1 in 8** of ALL Emergency Room visits in the US are related to a mental illness.
- **20%** of People Experiencing Homelessness have a Serious Mental Illness.
- **37%** of People Incarcerated in State and Federal Prisons have a diagnosed mental condition

Ripple Effect





*The **Proven** Solution: Integrated Healthcare*



Improve the Health Outcomes for
Individuals, Children & Families in our 8 + County Service Area
who experience high barriers to Quality Person Centered Whole-Health Care
and are uninsured, underinsured and/or living with an SPMI or SUD .

**Integrated Healthcare Provides the
Best Possible Outcomes for
People Living with Complex Healthcare
Needs.**

**Our Partnership currently provides Integrated Healthcare to
1,591 Individuals in Muscogee and the Surrounding Counties.**

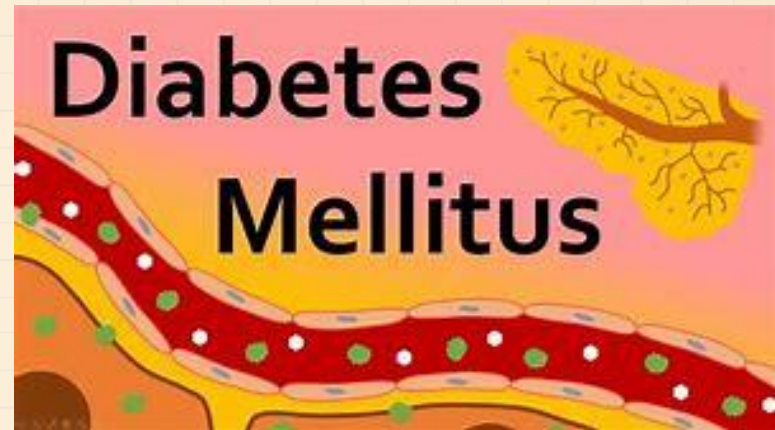
Tree of Life Healthcare by the Numbers

1,118 Patients in Primary Care



448 (40%)

Hypertension
Management



391 (35%)

Diabetes
Management

**ToLH uses a sliding Fee Scale and requires proof of income;
however NO ONE is turned away.**

Person-Centered Whole Health FY2019 By the Numbers

473 Adults in Muscogee County regularly use
New Horizons Integrated Care
as their **Primary Healthcare Provider.**

The top 5 diagnoses are:

- 40% High Blood Pressure
- 7% Hyperlipidemia
- 7% Hypercholesterolemia
- 5% Obesity
- 4% Type 2 Diabetes Mellitus



Specialty Services through Tree of Life Healthcare

- **Emergency Room Diversion**
- **Asthma Services**
- **Adult Sickle Cell Clinic - Monthly**





Individuals can **ADVOCATE** for the work we do and encourage local City & County Governments and Community Leaders to include New Horizons Behavioral Health and Tree of Life Healthcare, Inc. as part of **ANY Community-Wide Health Initiatives.**

Thank You!



Andrea B. Winston, LPC
Chief Executive Officer

706-596-5500

www.nhbh.org



Pastor Lowell Eliatt
Executive Director

706-225-0355

www.treeoflifehealthcare.org