



COLUMBUS AIRPORT

Presented By:

Amber Clark C.M., Airport Director



CSG
COLUMBUS AIRPORT



Topics of Discussion

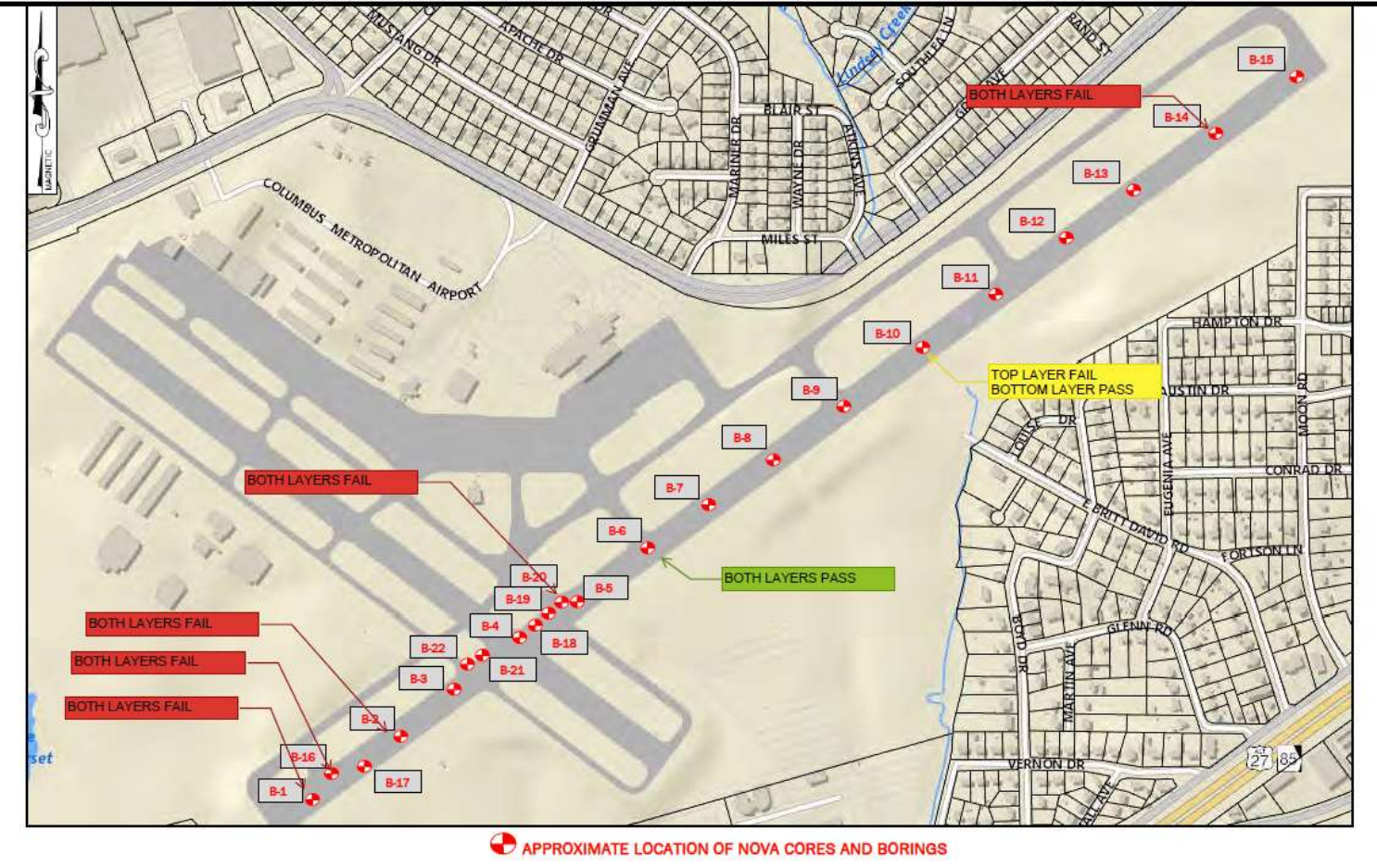
- Runway 6-24
Reconstruction
- TSPLOST

Runway 6-24

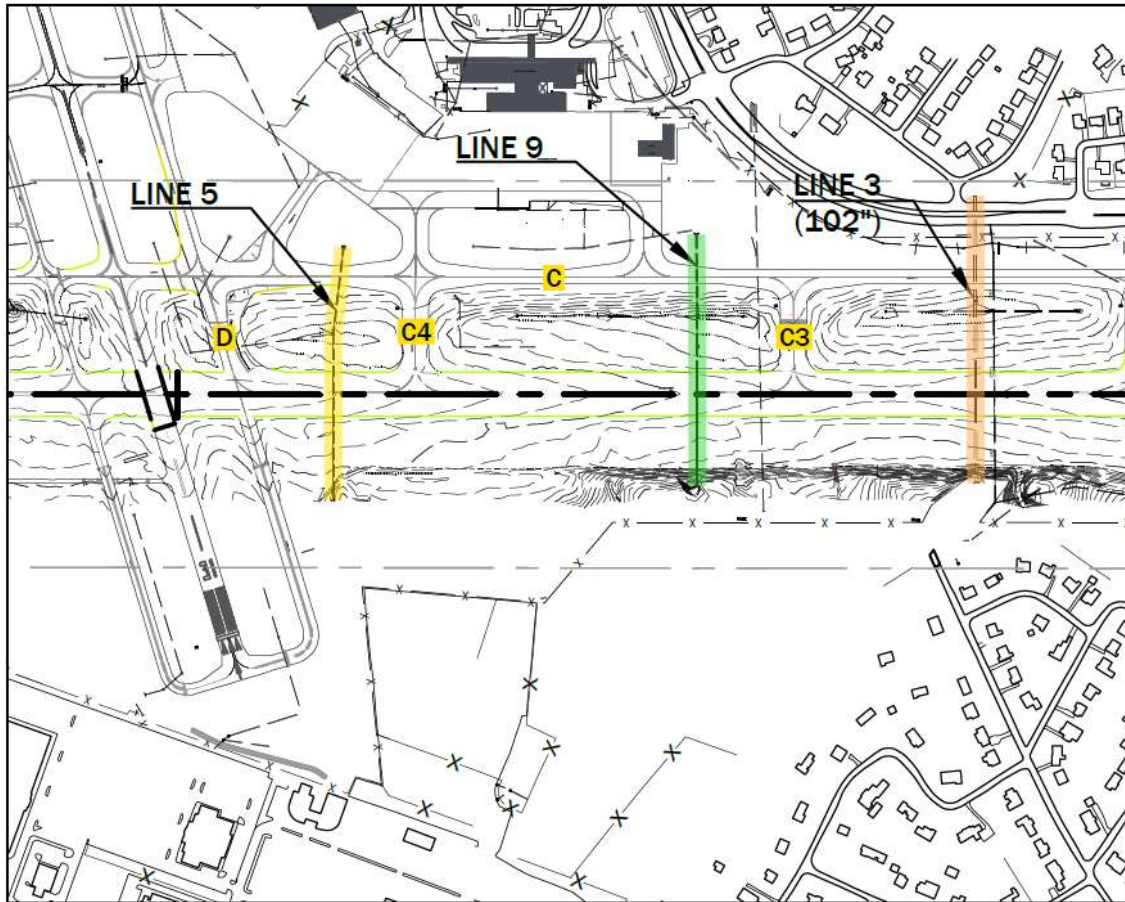


- Showing signs of cracking, depressions, and upheaval
- Typical runway useful life
 - 40 years
 - Portions of runway may be original
- Preventative maintenance
 - Crack reseal
 - Mill & fill
- Storm drain failure
 - Two horizontally under runway

Samples of Asphalt Cores RWY 6-24



Storm Drain Pipe Failure RWY 6-24



LOCATION MAP



Proposed RWY 6-24 Project Funding

- Total cost with storm drain pipe replacement
 - \$36.5 million
- FY24
 - Federal (FAA entitlements, discretionary, & BIL) \$14.1 million
 - State (5% match) \$0.78 million
 - Local (5% match) \$0.78 million (TSPLOST)
- FY25
 - Federal (FAA entitlements, discretionary, & BIL) \$14 million
 - State (5% match) \$0.78 million
 - Local (5% match) \$0.78 million (TSPLOST)
- Gap of Funding
 - \$5.3 million
 - CDS/CPF
 - Additional State Airport Funding
 - TSPLOST

TSPLOST

- Airport Maintenance
- \$25 million
 - Runway 6-24 reconstruction
 - \$0.78-\$1.56 million (anticipated)
 - \$5.3 million-\$21 million (possible)
- \$23.44 million-\$4 million
 - General Aviation Terminal & Parking
 - \$8.9 million
 - General Aviation Apron
 - \$2.4 million
 - Hangar, Maintenance Area, & Parking Lot
 - \$6.4 million
 - Employee/Overflow Parking Lot
 - \$1.3 million

TSPLOST-General Aviation/Hangar/Parking





CSG
COLUMBUS AIRPORT

Questions?

SOCIAL MEDIA SITES

(706) 324-2449

ACLARK@FLYCOLUMBUSGA.COM

WWW.FLYCOLUMBUSGA.COM