

2nd Avenue Corridor Study

June 16, 2020

2nd Avenue Corridor Study

The screenshot shows a web browser window with the URL <https://www.columbusga.gov/Planning/>. The page features a navigation sidebar on the left with a 'Touch' button highlighted by a red arrow. The main content area includes a 'Shape your future START HERE >' banner, a 'United States Census 2020' logo, and a 'Planning News' section. The news item is titled 'JR Allen Parkway Study' and dated 'Friday, June 12, 2020'. The text describes the study's purpose: to examine traffic congestion along the J.R. Allen Parkway corridor, improve transit access, and consider bicycle facilities. It also mentions a contractual agreement with the Georgia Department of Transportation for a study on Second (2nd) Avenue. The project limits are specified as starting at the intersection of 45th Street / Manchester Expressway and ending at the intersection of 19th Street and 2nd Avenue. A call to action asks visitors to visit the project website for more information.

Government Annex Building
420 10th Street – 2nd floor
Columbus, Georgia 31902
706.225-4421
706.225.4534 fax

PlanFirst Community
A Program of the Georgia Department of Community Affairs

PAC Trello Board
Commission's workflow tool

BHAR Trello Board
Board's workflow tool

Touch

**Shape your future
START HERE >**

**United States[®]
Census
2020**

Planning News

JR Allen Parkway Study
Friday, June 12, 2020

The purpose of this study is to examine this freeway/major arterial and to determine how to alleviate traffic congestion along the J.R. Allen Parkway corridor, while also improving access to transit shelters, connecting the pedestrian sidewalk network, and making considerations for bicycle facility/amenity investments.

Please visit JrAllenParkwayStudy.com to learn more and get involved!

2nd Avenue Streetscapes

On November 27, 2018, the Council of Columbus, Georgia voted to enter into a contractual agreement with the Georgia Department of Transportation to conduct a transportation study on Second (2nd) Avenue.

The project limits along 2nd Avenue start from the north at the intersection of 45th Street / Manchester Expressway and 2nd Avenue south to the intersection of 19th Street and 2nd Avenue.

Please visit [our website](#) for more information.

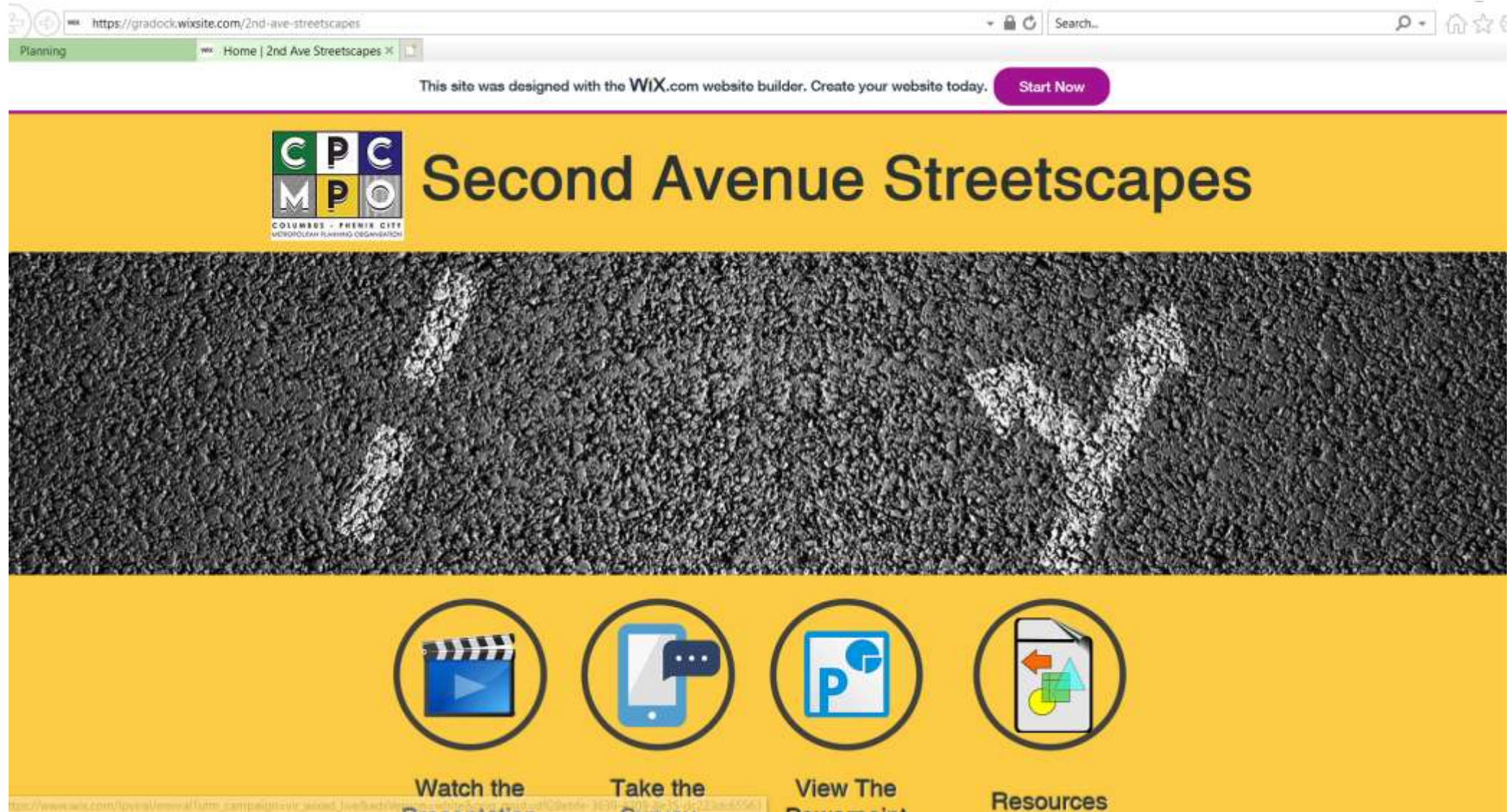
Planning Advisory Commission
Zoning Appeals
Historic & Architectural Review
UpTown Facade
MPO Policy
MPO Technical
MPO Citizens Advisory

Columbus 2038

Development Services
Subdivisions
Zoning
Applications and Forms
Fees
Appeals
UDO

Transportation Planning
Amendments
Transportation Projects
Congestion Management
Transportation Alternatives Program
Trans. Projects Map
TIP
UPWP
MTP
Transportation Studies
PPP


2nd Avenue Corridor Study







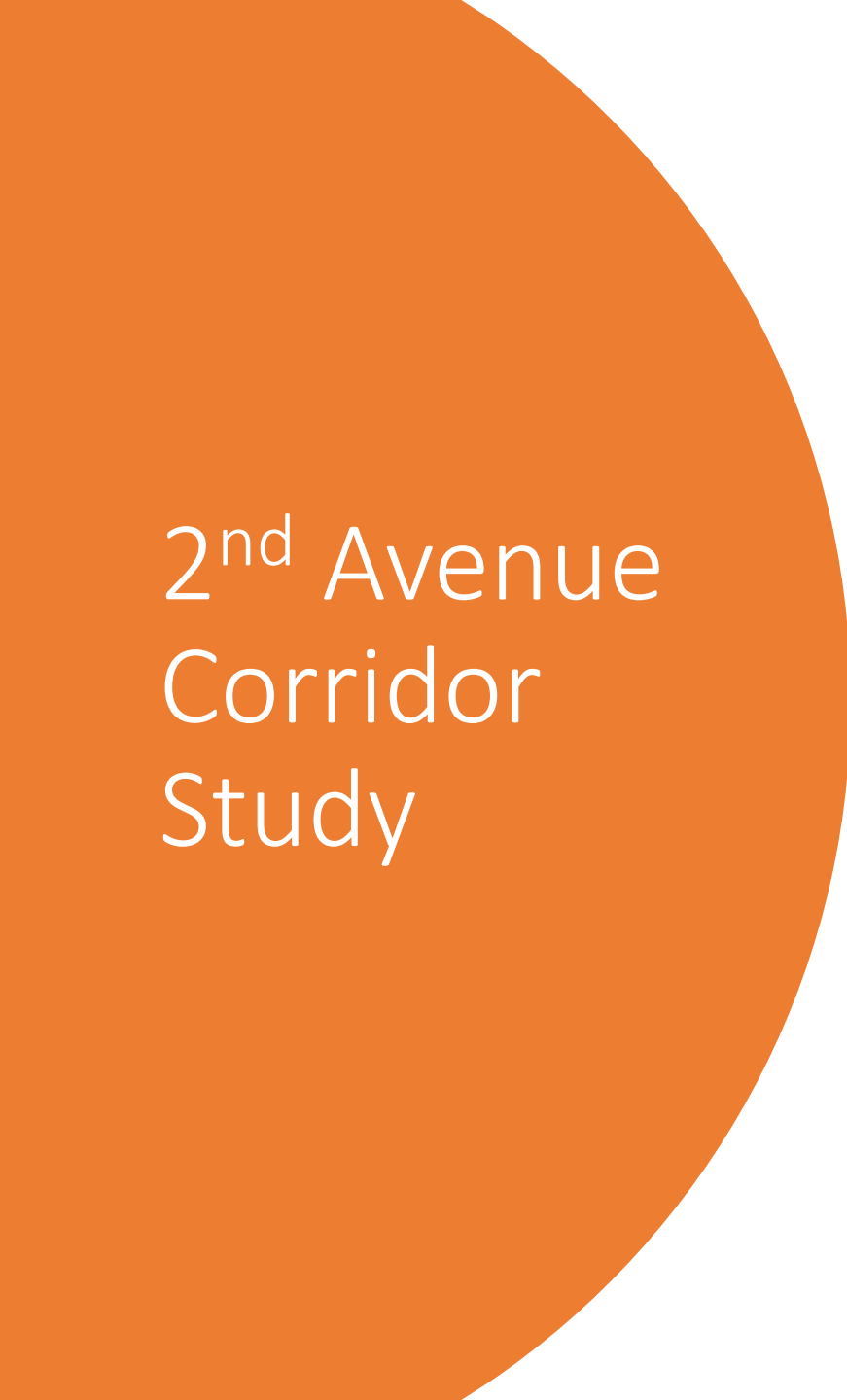
https://gradock.wixsite.com/2nd-ave-streetscapes

Planning Home | 2nd Ave Streetscapes X


This site was designed with the **Wix.com** website builder. Create your website today. [Start Now](#)

 **Second Avenue Streetscapes**

Watch the  **Take the**  **View The**  **Resources** 



2nd Avenue Corridor Study

- Background
 - Video/Presentation
 - Survey
 - Maps
 - Resources
 - Contact Information and
Comments Section
- 

2nd Avenue Corridor Study

AUTOMOBILE PEAK HOUR HEAT MAP

6:00 AM TO 9:00 AM



LEGEND

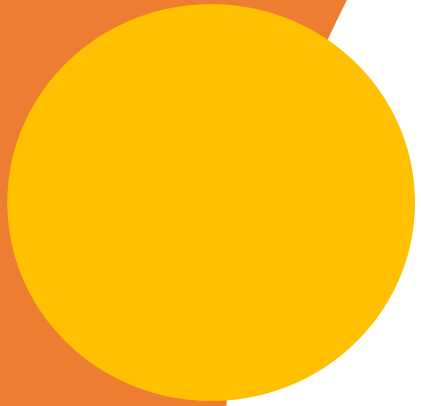
Car Counts (Quantity)

- 1 - 600
- 601 - 1800

- 1801 - 3000
- 3000 - 3600

Project Limits





QUESTIONS