



WASTE COLLECTION UPDATE

City Council Meeting

April 12th, 2022

Solid Waste Challenges Table of Contents

- Critical Vacancies
- Inmates
- Contractor
- Weather Challenges



CRITICAL VACANCIES

**STILL OPERATING
WITH FIVE (5) OPEN
ROUTES DAILY ON
HOUSEHOLD
GARBAGE, THREE (3)
OPEN BULK ROUTES**

**NO BACKLOG IN
HOUSEHOLD
GARBAGE OR
RECYCLING
COLLECTIONS**

**As of March 30, 2022
25 VACANT POSITIONS**

CRITICAL VACANCIES

HIRE
25 Drivers

TRAIN
6 Wks Training

RETAIN
Pay Plan

CRITICAL VACANCIES

- **WASTE EQUIPMENT OPERATORS**

- TOTAL FULL TIME POSITIONS: 70
- TOTAL PART TIME POSITIONS: 10

- **FILLED POSITIONS**

- FULL TIME WEO – 45 32.5% NOT FILLED
- PART TIME WEO – 9 1 NOT FILLED

CRITICAL VACANCIES WASTE COLLECTION



WASTE EQUIPMENT OPERATORS

- **STARTING SALARY \$16.04 PER HOUR**
 - DRIVE THE TRUCK SAFELY
 - OVERSEE INMATES (2)
 - HANDLE OPEN ROUTES
 - BACK DOOR SERVICE
 - INITIAL CONTACT FOR RESIDENTIAL COMPLAINTS
 - EXTENDED WORK WEEK/OVERTIME
- WEO DRIVES:
 - REAR LOADER
 - AUTOMATED SIDE LOADER
 - GRAB-ALL TRUCKS

COMPETITORS OFFERING



COMPETITORS ARE OFFERING

- Waste Management \$18-\$24/Experience
- Ft. Benning - \$20-\$25/Contracting Agency
- Lagrange - \$17.50 - \$24/Experience
- AM Waste - \$20-\$24/Experience
- SOC Energy - \$20.00 Per Hour
- Stat Courier \$25-\$30/Experience
- Haverly's \$20-\$27/NON CDL BOX TRUCK
- **SIGN ON BONUS OFFERED**



WASTE COLLECTION FUTURE



CRITICAL VACANCIES

Recruitment Strategy

Job Fair Attendance

**Consistent Advertisements, CCG,
SWANA & APWA**

New Billboards – Join Our Team

QR Code – Job Application Site

Join Our Team Logos – Truck

Recycling App – Join Our Team

**Social Media Push – Join Our
Team**

Temp Services In Process

Join Our Team!

WE ARE HIRING CDL DRIVERS



706-326-4696



JOIN OUR TEAM!

Now Hiring CDL Drivers
Search: Waste Equipment Operator



(706) 225-4696

www.governmentjobs.com/careers/columbusga



OUTFRONT

BULK WASTE COLLECTION

**As of April 11th, 2022,
Closed 5,891 Bulk Waste
Collection Work Orders**

3,820– Green Waste

2,071– Junk Waste

**Improve Service by
making it a “Call
In” Service instead
of running Routes.**

**Tree For Fee
Service will not be
affected by this
change.**

BULK COLLECTION CHALLENGES UPDATE

- Bulk Operators are currently working 6 days a week, filling garbage trucks 4 days a week and working on Grab-Alls 2 days a week.
- Currently Bulk operations is down 3 operators.



INMATE SECURITY LEVEL CHALLENGES

- INMATE SECURITY LEVELS:
 - YELLOW CARD - TRUSTEE
 - RED CARD – MODERATE SECURITY
 - BLUE CARD – ARMED GUARD
- Availability challenges due to security levels.

CONTRACTOR CHALLENGES



AM WASTE

- CURRENT CONTRACTOR
 - YARD WASTE COLLECTION
 - JAN. 500 TONS
 - FEB 640 TONS
 - MAR 1,051 TONS
- TOOK ADDITIONAL 16 ROUTES TO ASSIST CCG FOR A TOTAL OF 52 WEEKLY ROUTES
- NO INCREASE IN COST
- SOLELY RESPONSIBLE FOR THE COLLECTION OF ALL CONTAINERIZED YARD WASTE.

CONTRACTOR SCHEDULE

AM WASTE

WEEK A	WEEK B	WEEK C
300	300	300
301	301	301
302	302	302
303	303	303
304	304	304
305	305	305
306	306	306
307	307	307
308	308	308
309	309	309
310	310	310
311	311	311
312	312	312
313	313	313

WASTE COLLECTION CHALLENGES



WEATHER

- SEVERE WEATHER CAUSES THE DELAY COLLECTION.
- UPCOMING SUMMER MONTHS (APRIL-SEPT) HEAT WILL BE A MAJOR FACTOR IN COLLECTION.
 - INMATE AVAILABILITY DUE TO HEAT EXHAUSTION
 - INMATE REPLACEMENT WILL BE CHALLENGED.
- We've Requested an earlier start time during Summer Months, 7:00 arrival time.
- Waste amounts will increase during this period which will mean more stops for collection.
- EQUIPMENT FAILURES DUE TO EXCESSIVE HEAT.

WASTE COLLECTION FUTURE



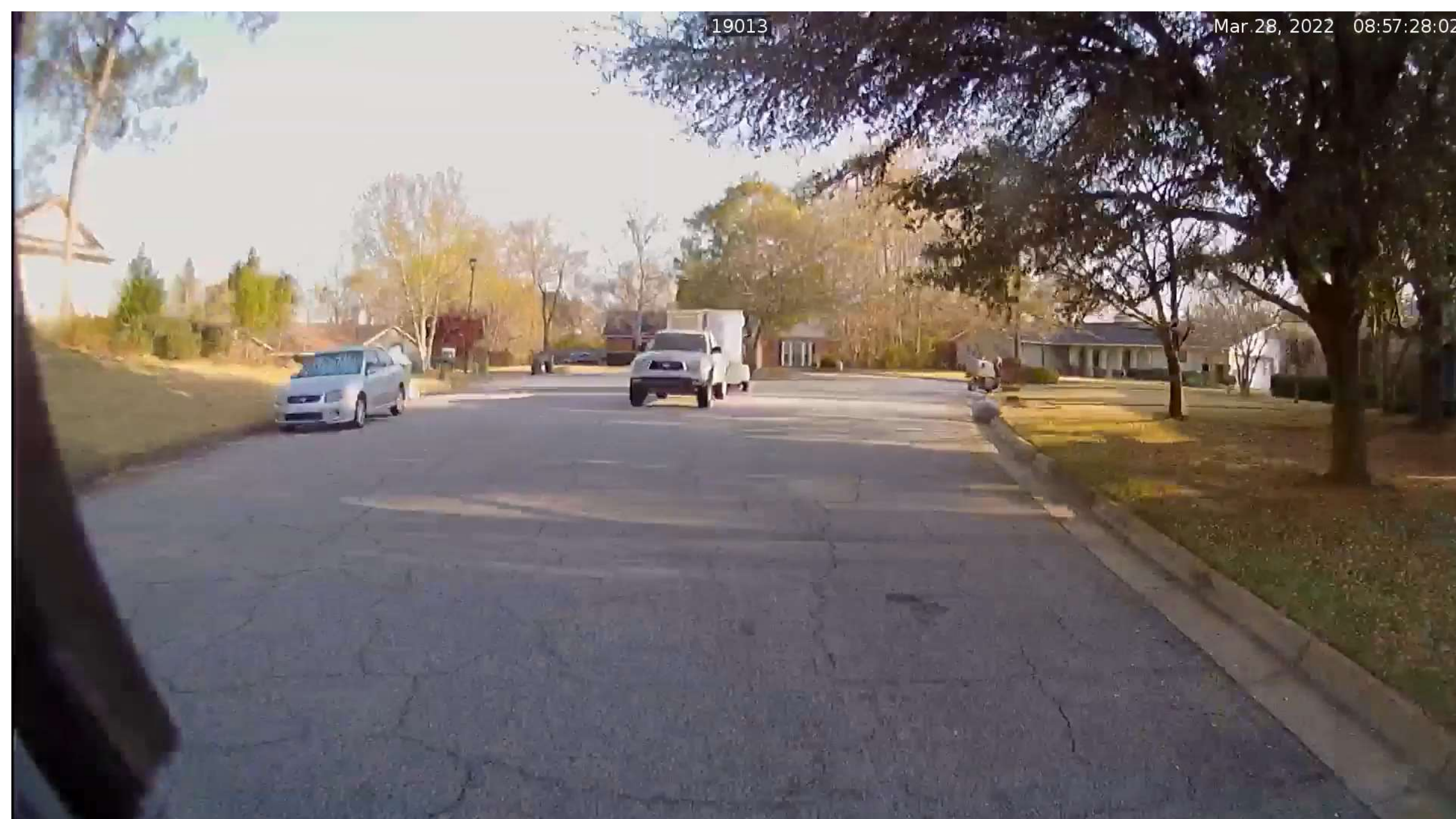
Waste Collection

**Waste Collection RFP In Process
Expect to have trucks by Mid-
2023**

**Mobile Technology – determine
if driver error has caused a miss
service, check Idelling time,
and over-all improve efficiency
of resources.**

19013

Mar. 28, 2022 08:57:28:02



WASTE COLLECTION FUTURE



Waste Collection

- Waste Collection - Wednesday & Saturdays / Overtime
- Emergency Bulk Waste Vendors
 - Meeting on April 14, 2022, Thursday
 - Start collecting Monday, April 18, 2022
- Employee Incentive/CDL Licensed Drivers
 - Working on Off Day - \$175.00 per day
- Increase Hiring of Temp. Employees through Agency
- Increased Landfill Hours
 - Saturday Hours Increased to being open every 1st & 3rd Saturday

Options for Maintaining Bulk Services



Bi-weekly Recycling Collection and Bi-weekly bulk collections.



By using bi-weekly services, we will rotate recycling operators into household garbage freeing the bulk operators to collect work orders.

Bi-Weekly Services

Pros

- Continue service with current staff.
- Cleaner streets.
- Fuel savings for call in service.
- More reliable service for both.
- Lower maintenance costs.

Cons

- It is a reduction of services.
- Possible need for additional recycling containers.

WASTE COLLECTION CART DELIVERY

IPL, INC.

- **Cart delivery: Cart – 72,155 delivered to a total of 36,078 homes.**
- **65 Gallon Carts on order/311 Request**



CART PLACEMENT

GOOD CART PLACEMENT

Keep **3** Feet of Space Between Objects & Cart

WHEELS AGAINST THE CURB!



BAD CART PLACEMENT



RESIDENTIAL CONCERN/FACTS

- **WHAT DO I DO WITH MY OLD CAN?** Please place empty cans out for collection

1. USE IT FOR COMPOSTING – YARD WASTE
2. WE WILL RECYCLE YOUR OLD CAN (S)

If your household waste is collected on **Monday**, collection **Saturday, June 4, 2022**

If your household waste is collected on **Tuesday**, collection **Saturday, April 23, 2022**

If your household waste is collected on **Thursday**, collection **Saturday, May 7, 2022**

If your household waste is collected on **Friday**, collection **Saturday, May 21, 2022**

3. Drop off sites will also be available; locations and dates TBD

RESIDENTIAL COLLECTION

**BLACK CONTAINER—
HOUSEHOLD WASTE**

**GREEN CONTAINER— YARD
WASTE (LEAVES/GRASS)**

**BLUE CONTAINER – RECYCLING
WASTE**

What's Coming? SUMMER IS COMING!



Limited inmates that meet classification to work Waste Collection.

The intense heat of the summer months, coupled with the inmates' shortages will cause collection delays.

Maintaining Household garbage will continue to be priority.

Currently No New Drivers.



QUESTIONS?