

# Master Plan and Parking Study Columbus Trade Center Columbus, Georgia





# **Trade Center Needs**

**Reason for Master Plan**

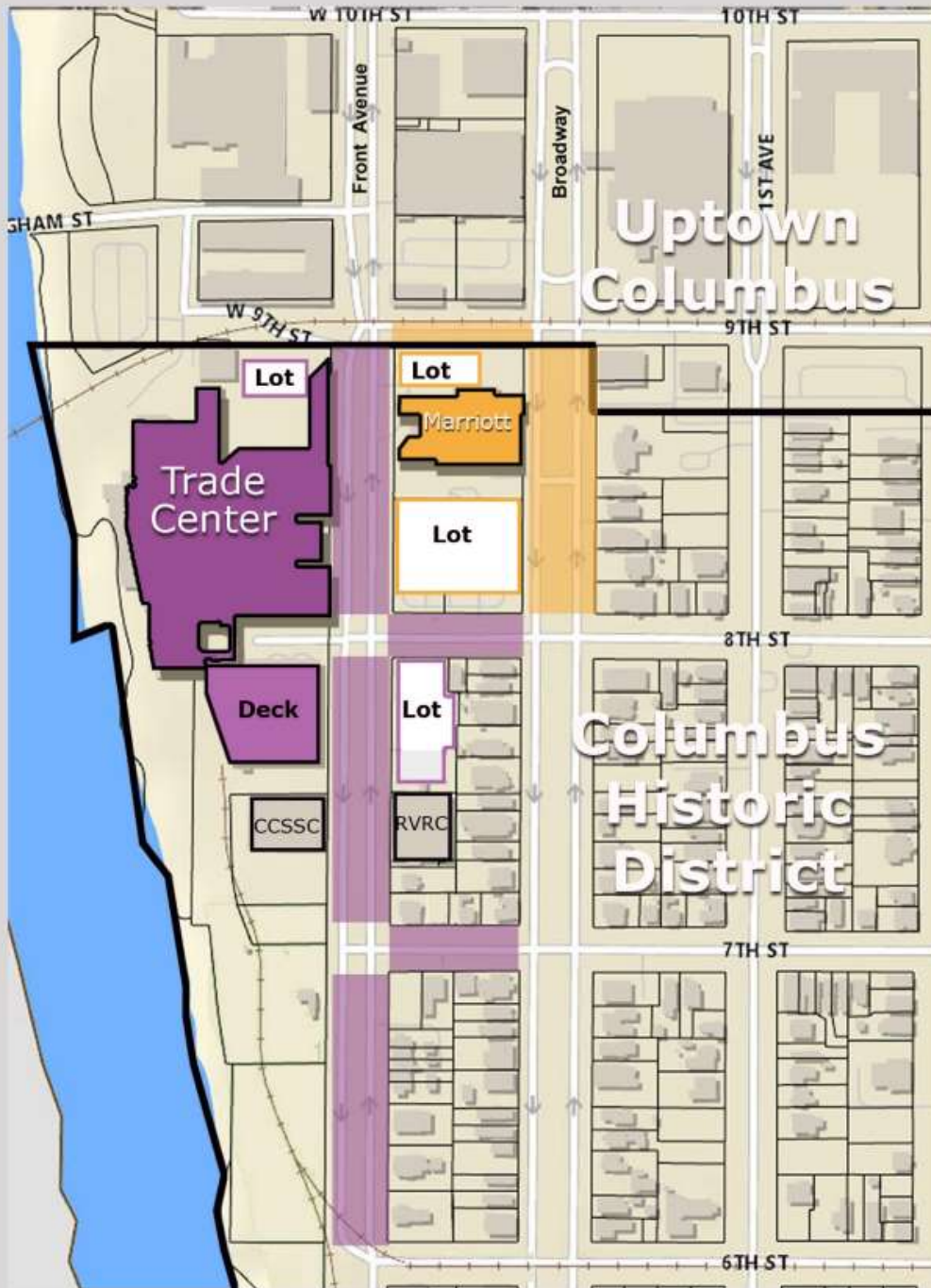
**Parking**

**Green Space**

**Hotel**

An aerial photograph of a university campus, showing various buildings, green spaces, and a large body of water on the left side. The word "Parking" is overlaid in the center in a large, bold, black font.

# Parking

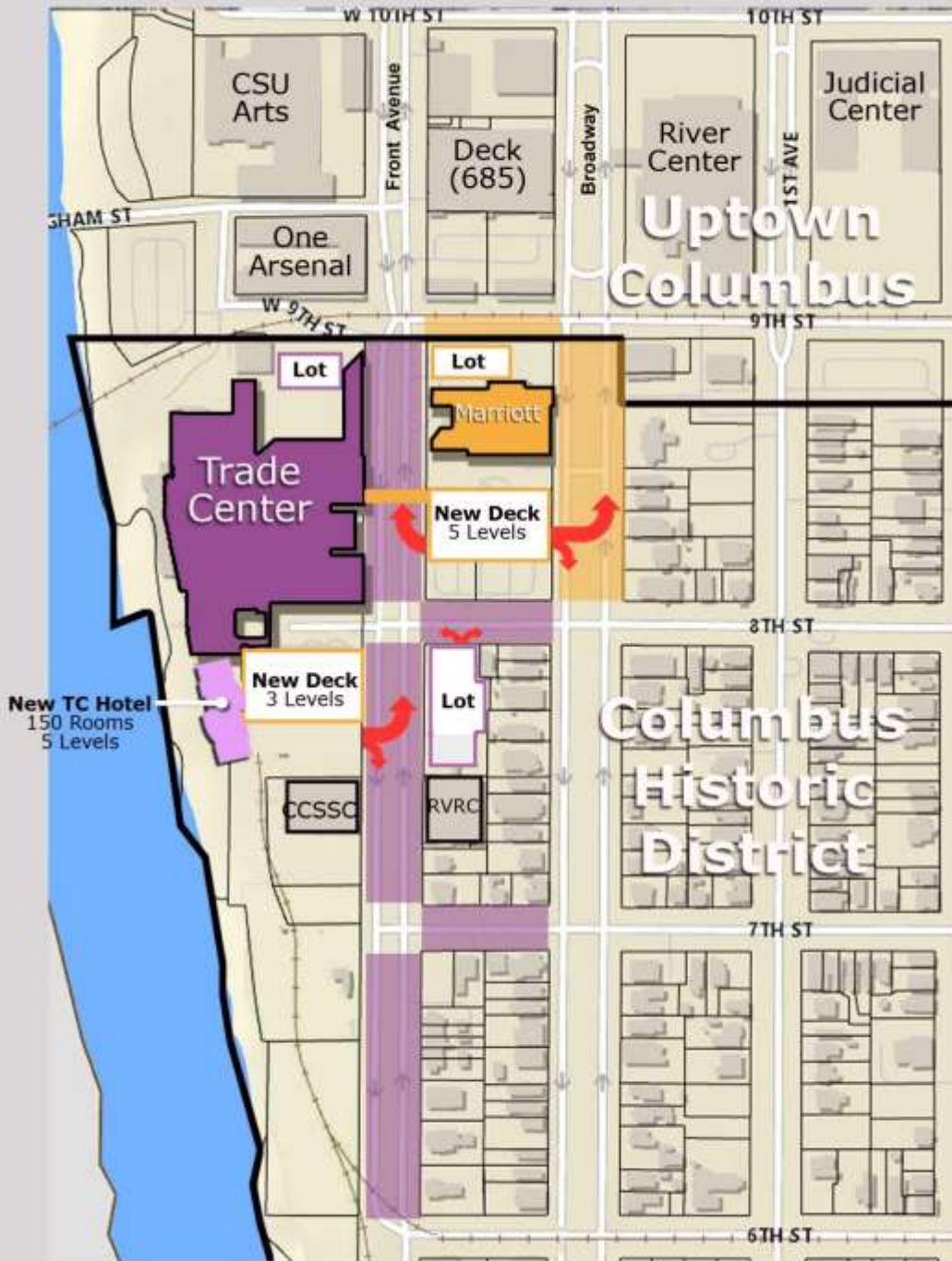


## Study Process

---

Engage Sain Associates as Traffic Engineer for the Study	October 2024
Christmas in the South Event Study	November 2024
AFLAC Christmas Party Event Study	December 2024
Report Complete	February 2025





## **Scenario A**

### **Two Deck Solution**

- Phase 1  
 Construct Marriott Deck  
 5 Parking Levels
- Phase 2  
 Construct TC Deck  
 3 Parking Levels
- Construct TC Hotel  
 150 Rooms  
 5 Floors

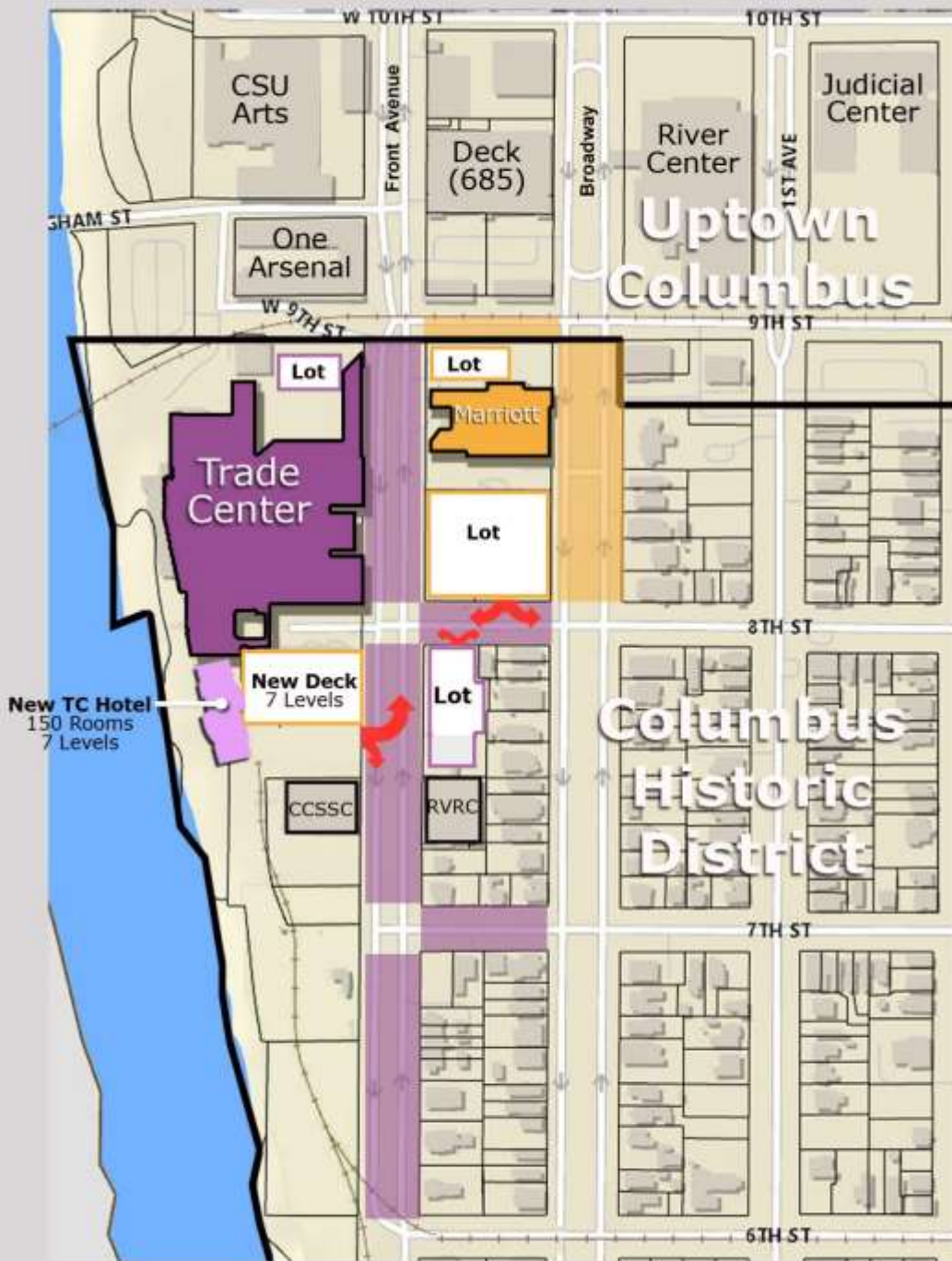
## **Pro's**

- Traffic impacts are minimal during construction
- Multiple ingress/egress points - Front Avenue and Broadway
- Minimizes need for parking in Columbus Historic District
- Overhead walkway connects Deck to Trade Center
- No remote parking or temporary Transportation needed for events
- New parking timing is not dependent on hotel developer

## **Cons**

- Longer construction time due to project phasing





## **Scenario B**

### **One Deck Solution**

Demo Trade Center Deck

Construct TC Deck  
7 Parking Levels

Construct New TC Hotel  
150 Rooms  
7 Floors

## **Pro's**

Ability to direct event traffic to a single location

Fewer pedestrians crossing Front Avenue

## **Con's**

Event parking impacted for duration of construction

Longer construction time due to size of deck

More traffic and parking in Columbus Historic District for duration of construction

Single egress point on Front Avenue for new deck

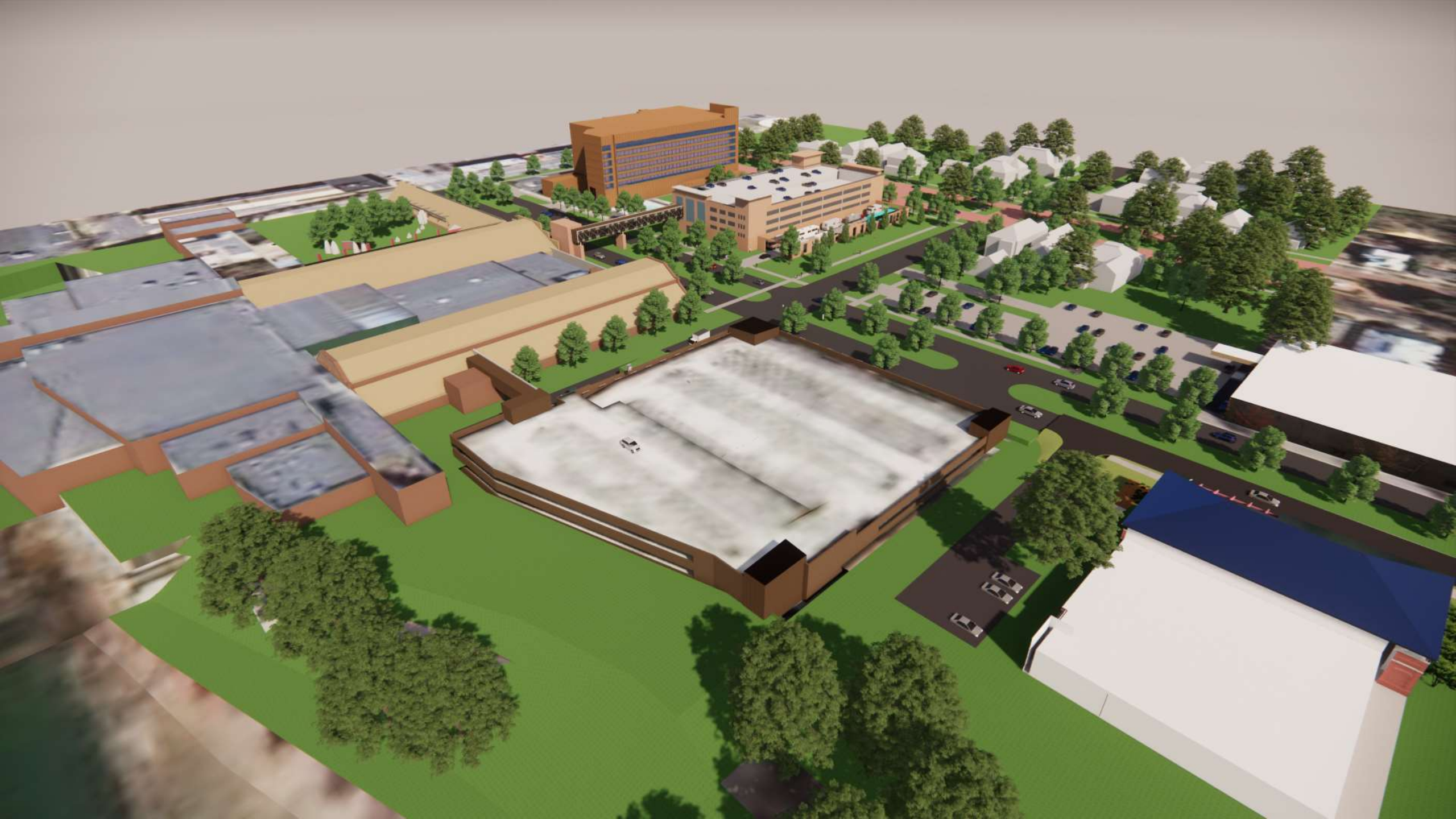
Schedule is dependent on Developer timeline

Remote parking and temp Transportation needed for event

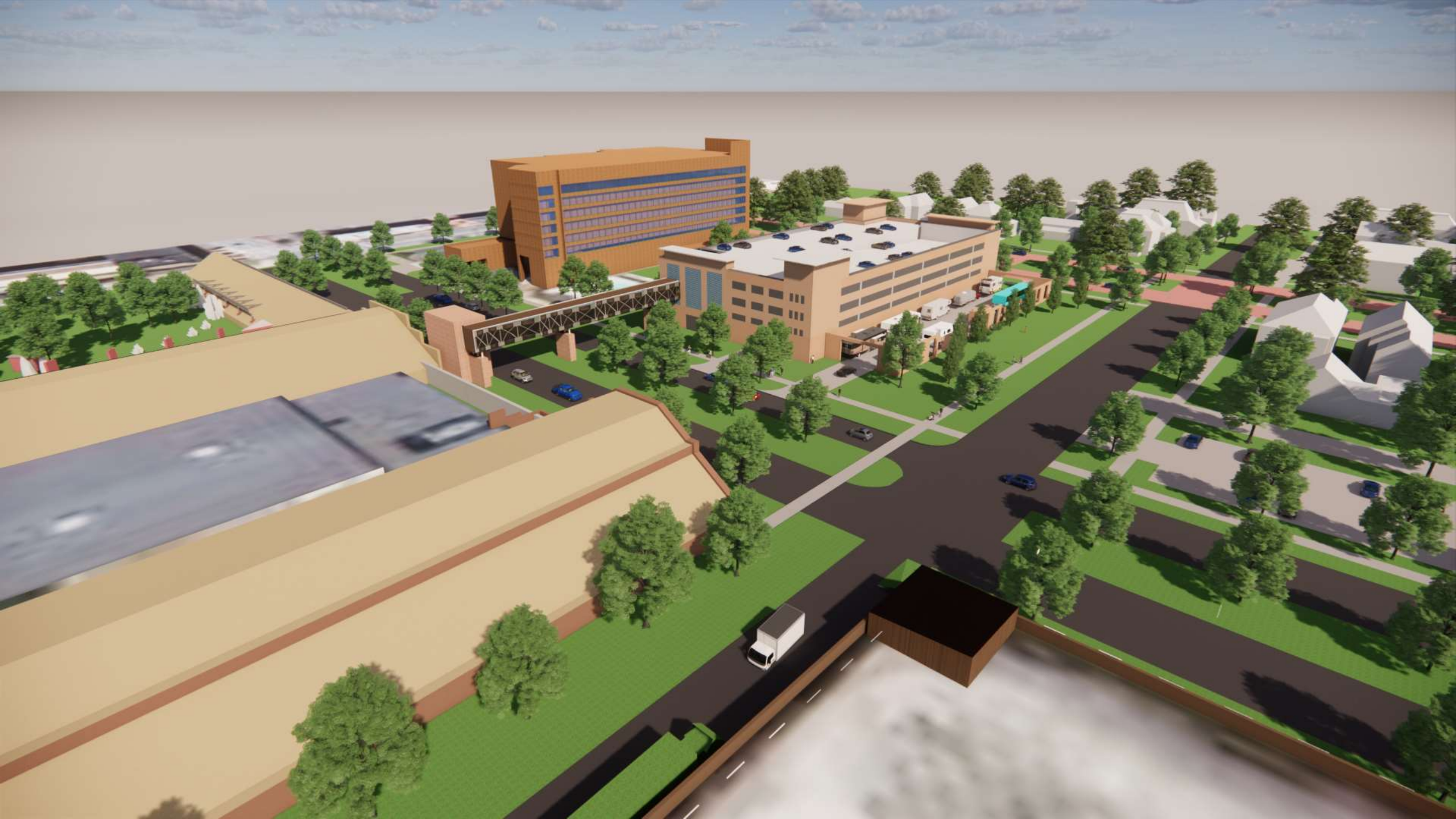


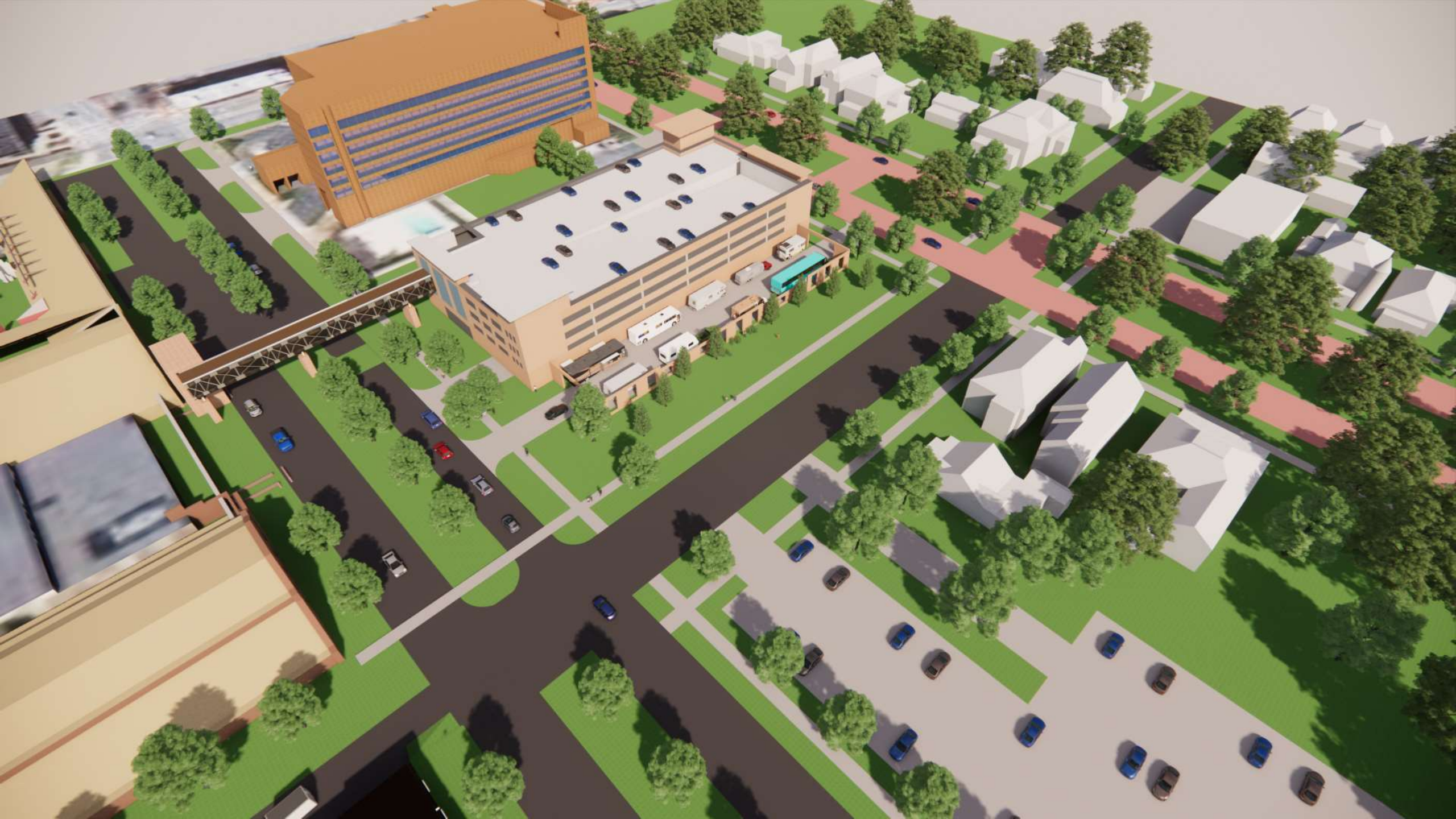
COLUMBUS GEORGIA  
CONVENTION & TRADE CENTER

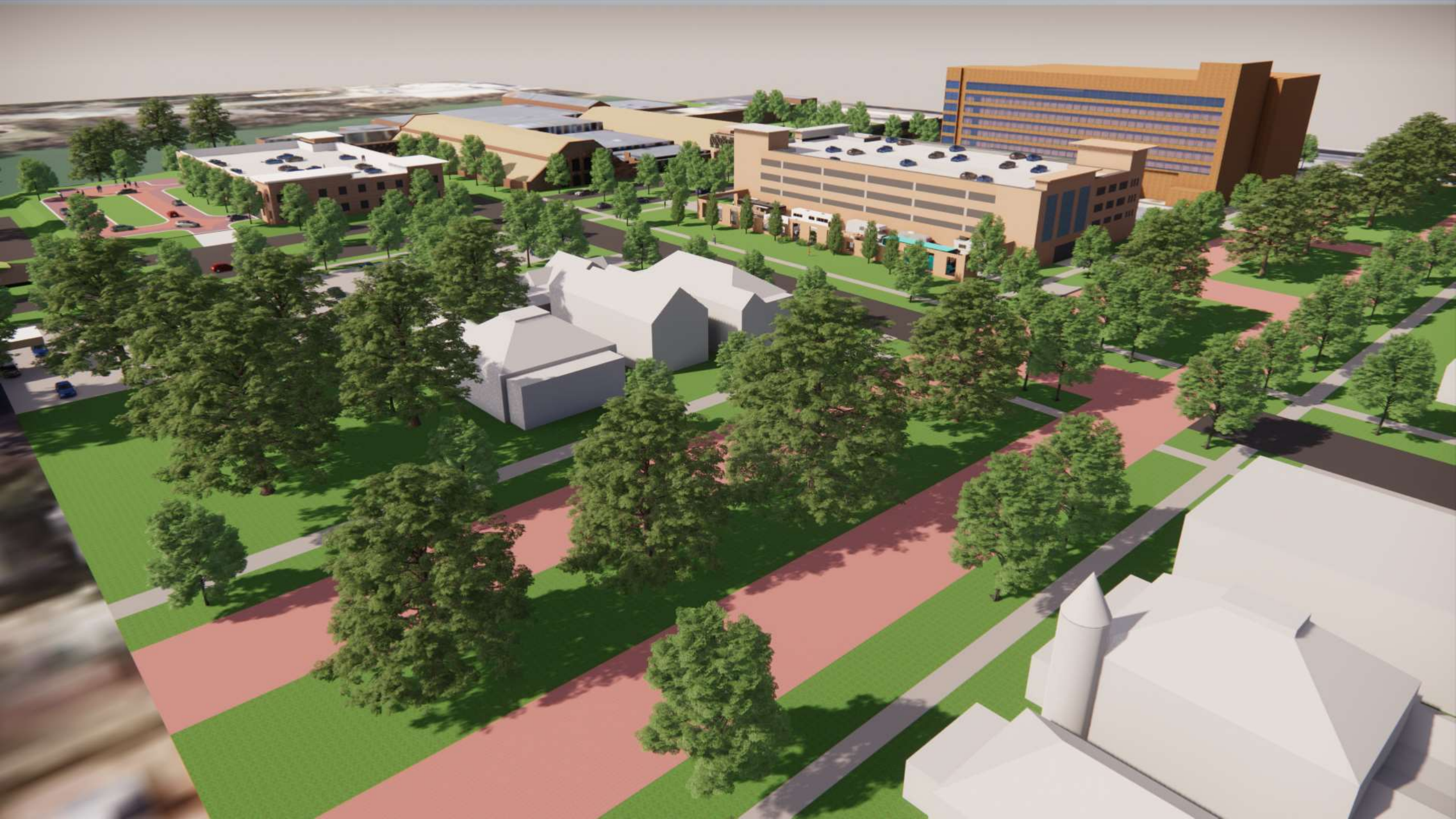




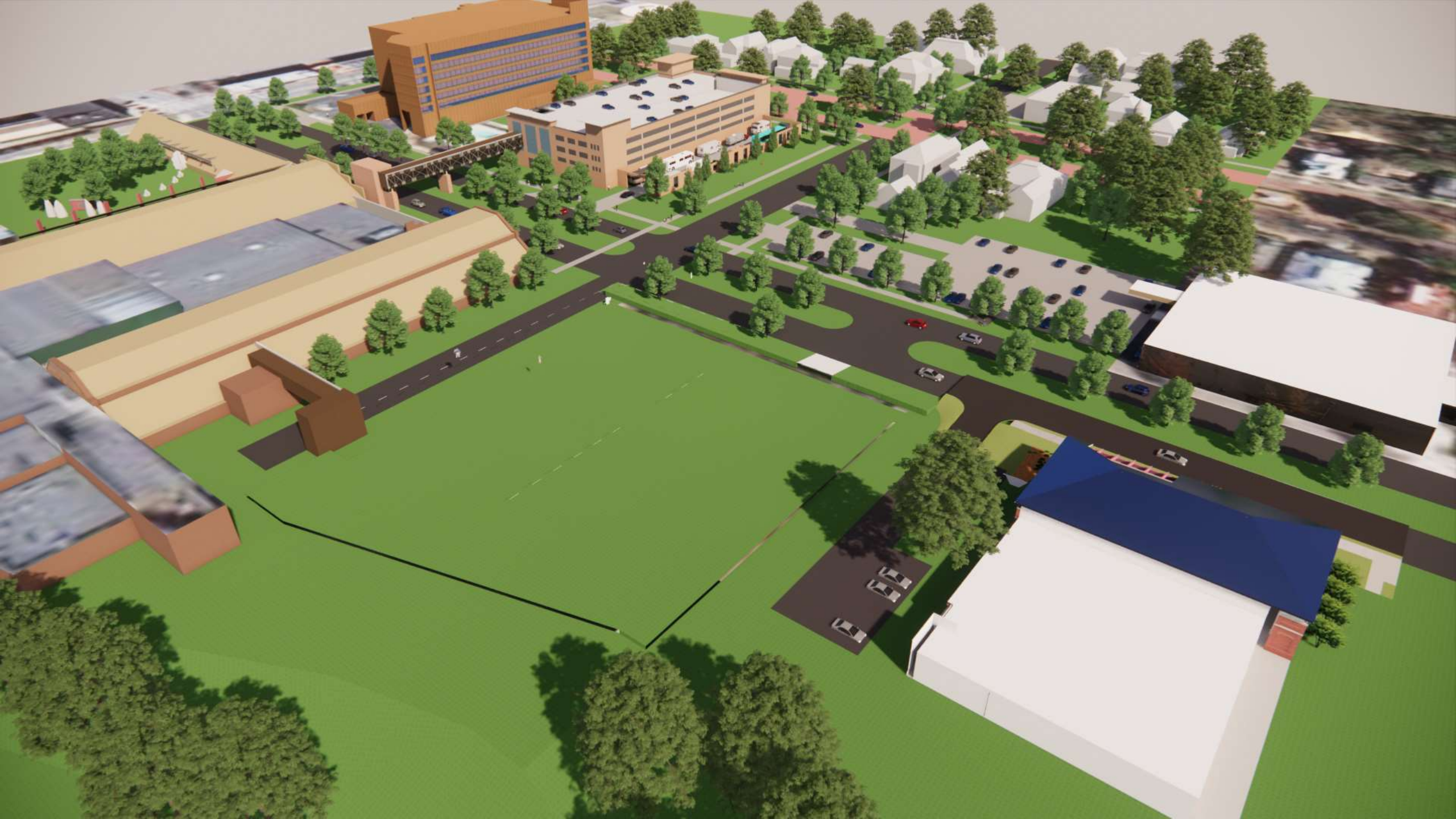














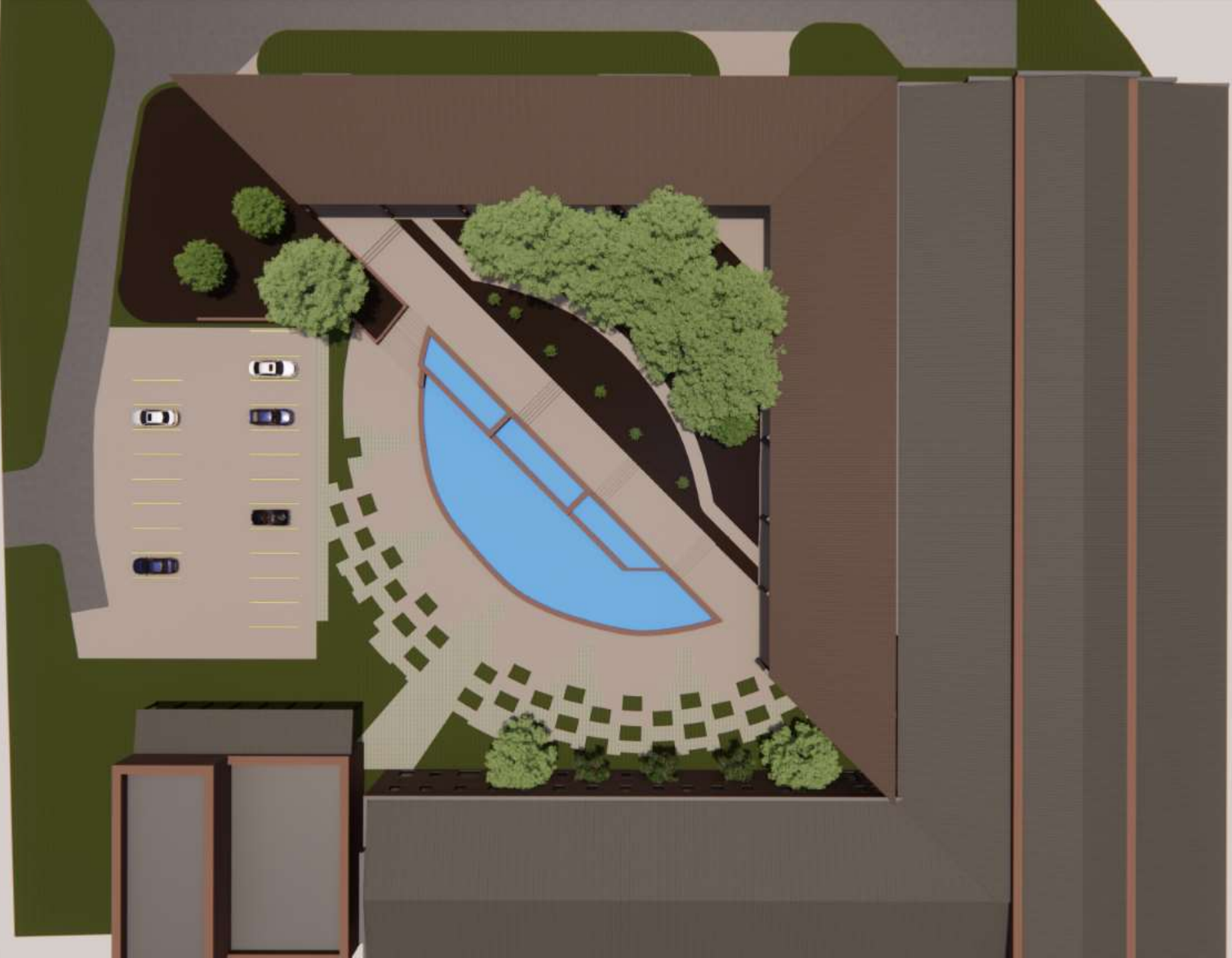






An aerial photograph of a city, likely along a riverbank, showing a mix of residential and commercial buildings, streets, and green spaces. The image is semi-transparent, serving as a background for the text.

# **Green Space**













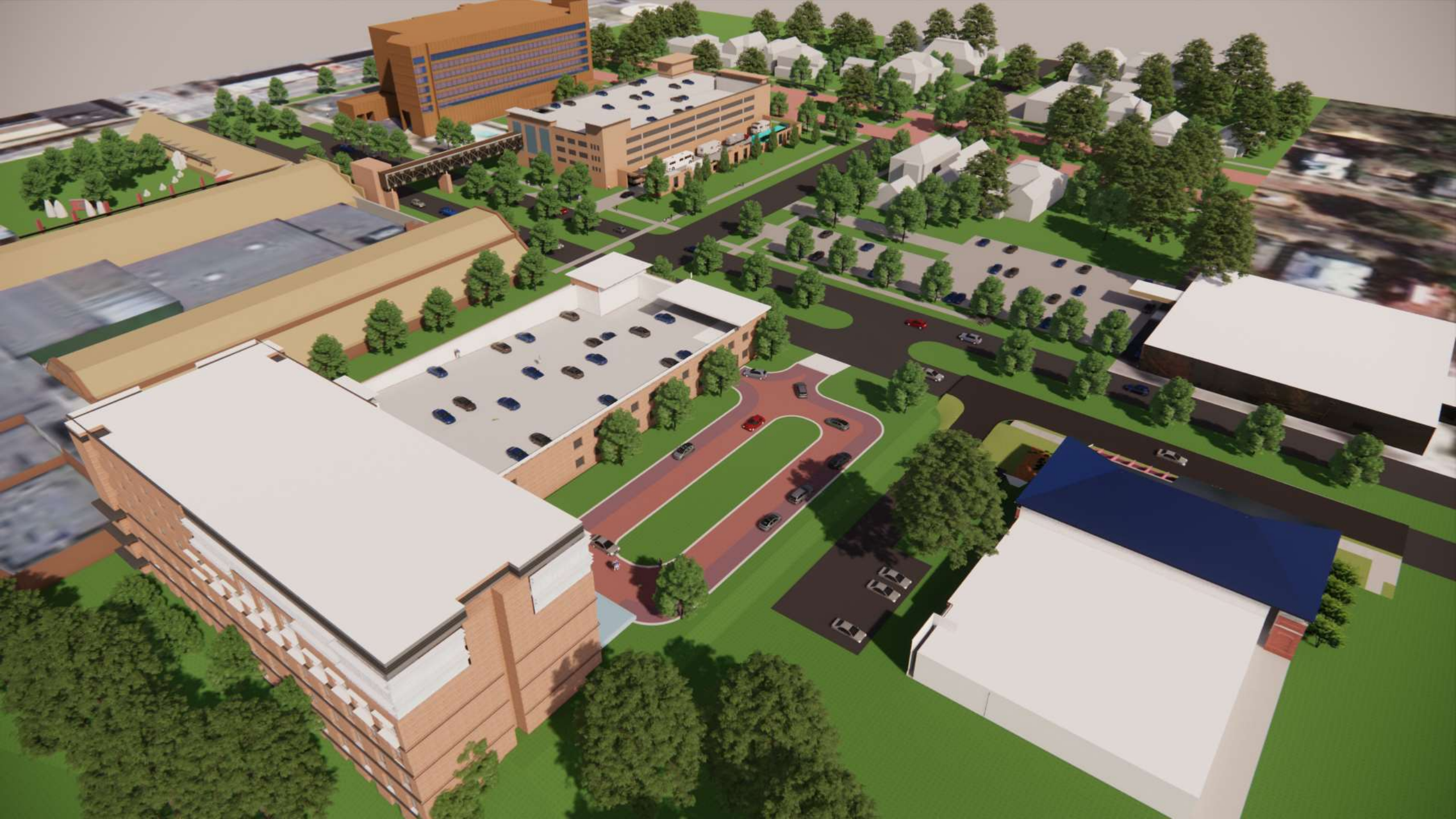


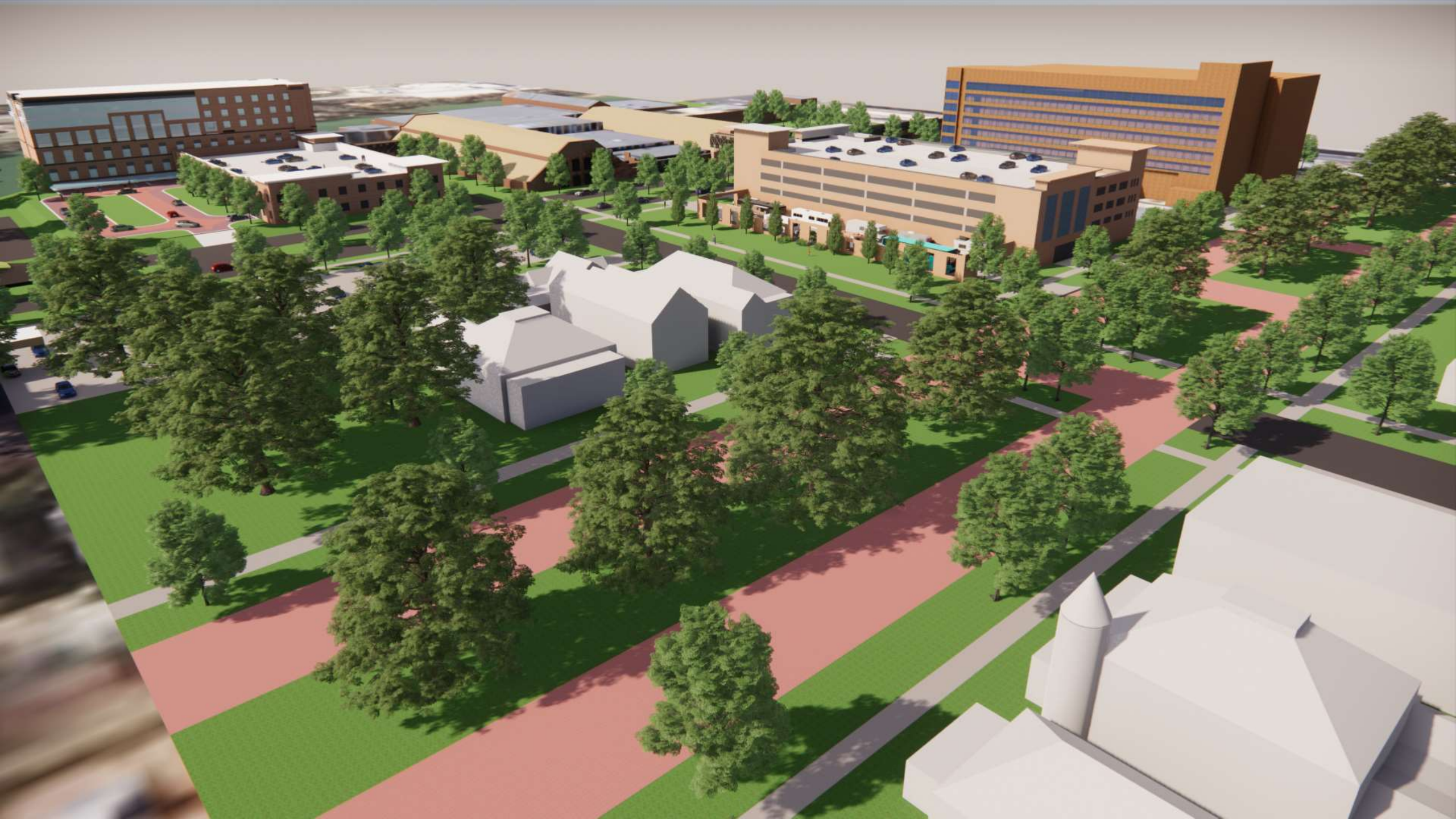




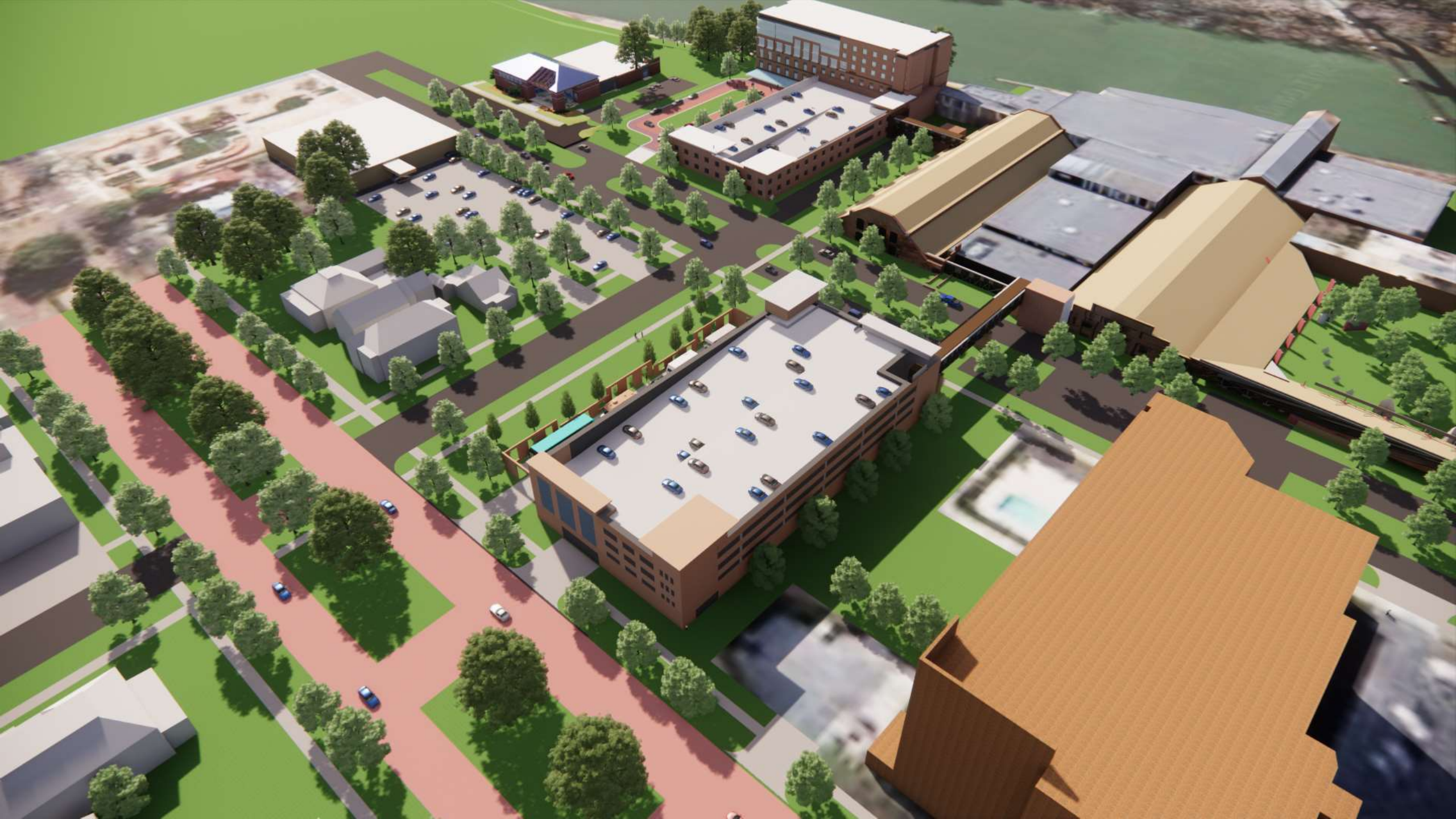
An aerial photograph of a city, likely New Orleans, showing a large complex of buildings along a waterfront. The complex is highlighted with a semi-transparent blue overlay. The word "Hotel" is written in large, bold, black letters across the center of the image, positioned over the highlighted area. The surrounding city features a mix of residential and commercial buildings, with green trees interspersed throughout. A body of water is visible in the bottom left corner.

**Hotel**









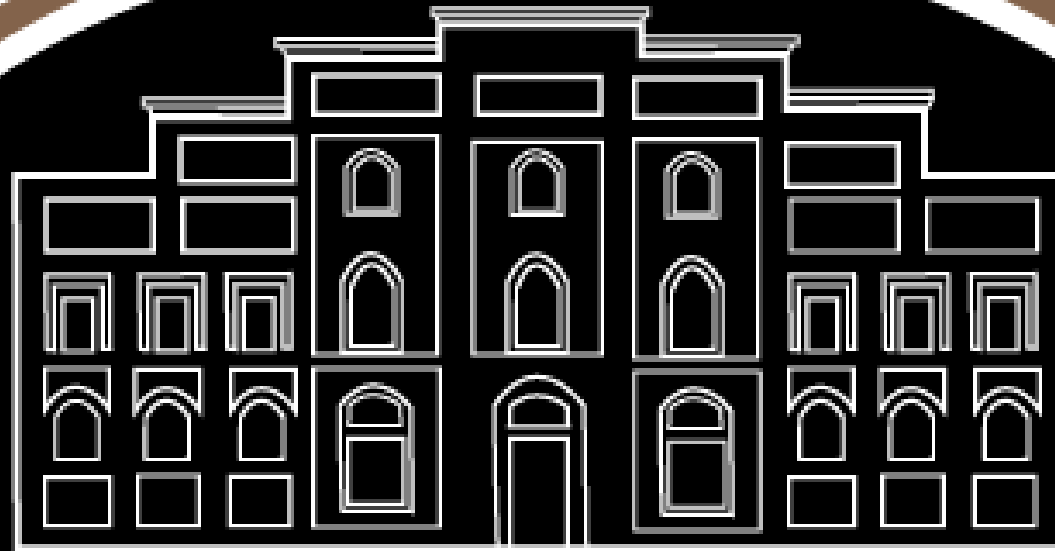


# Master Plan and Parking Study Columbus Trade Center Columbus, Georgia





**HISTORIC**



**1853**

**IRON WORKS**