

COLUMBUS CORRECT CARE

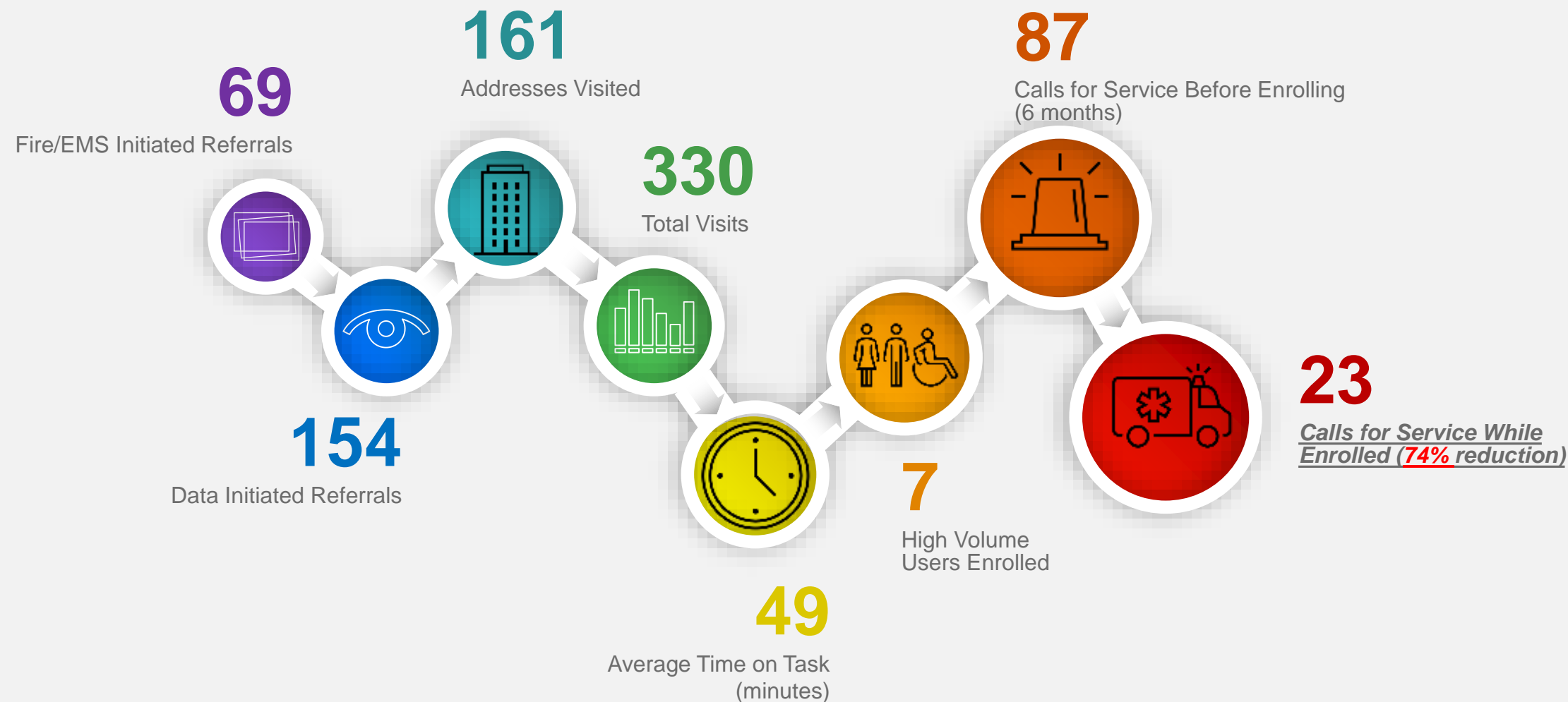


CCC represents a collaborative effort to optimize medical resources by engaging community partners and leveraging their expertise.

This initiative focuses on addressing broader healthcare needs, including mental health and social services, to create a more comprehensive approach to community wellness.

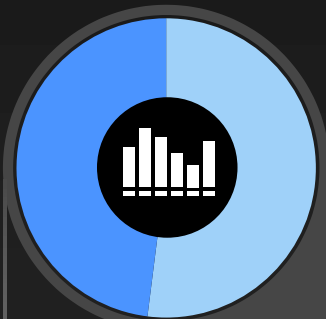
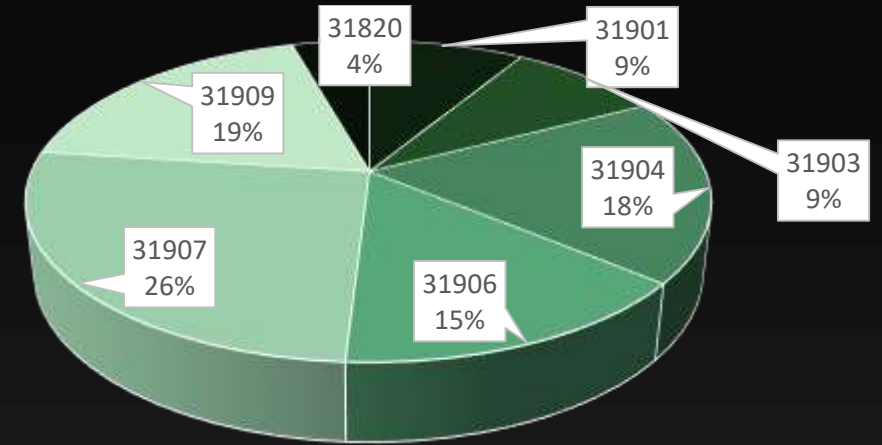
Columbus Correct Care (Feb –June/FY25)

Mobile Integrated Healthcare (MIH-1)





ZIP CODES SERVICED



48%
MALE
PARTICIPANTS



52%
CAUCASIAN

