

COLUMBUS

GEORGIA



SAFE STREETS FOR ALL

Columbus SS4A Plan

December 9, 2025

Introduction

What is SS4A?

- Federal program: \$5 billion over five years
- Elimination of roadway fatalities and serious injuries through Safe System Approach
- Infrastructure projects and planning



S | S
— | —
4 | A

Safety Action Plan Scope

THE ACTION PLAN WILL:

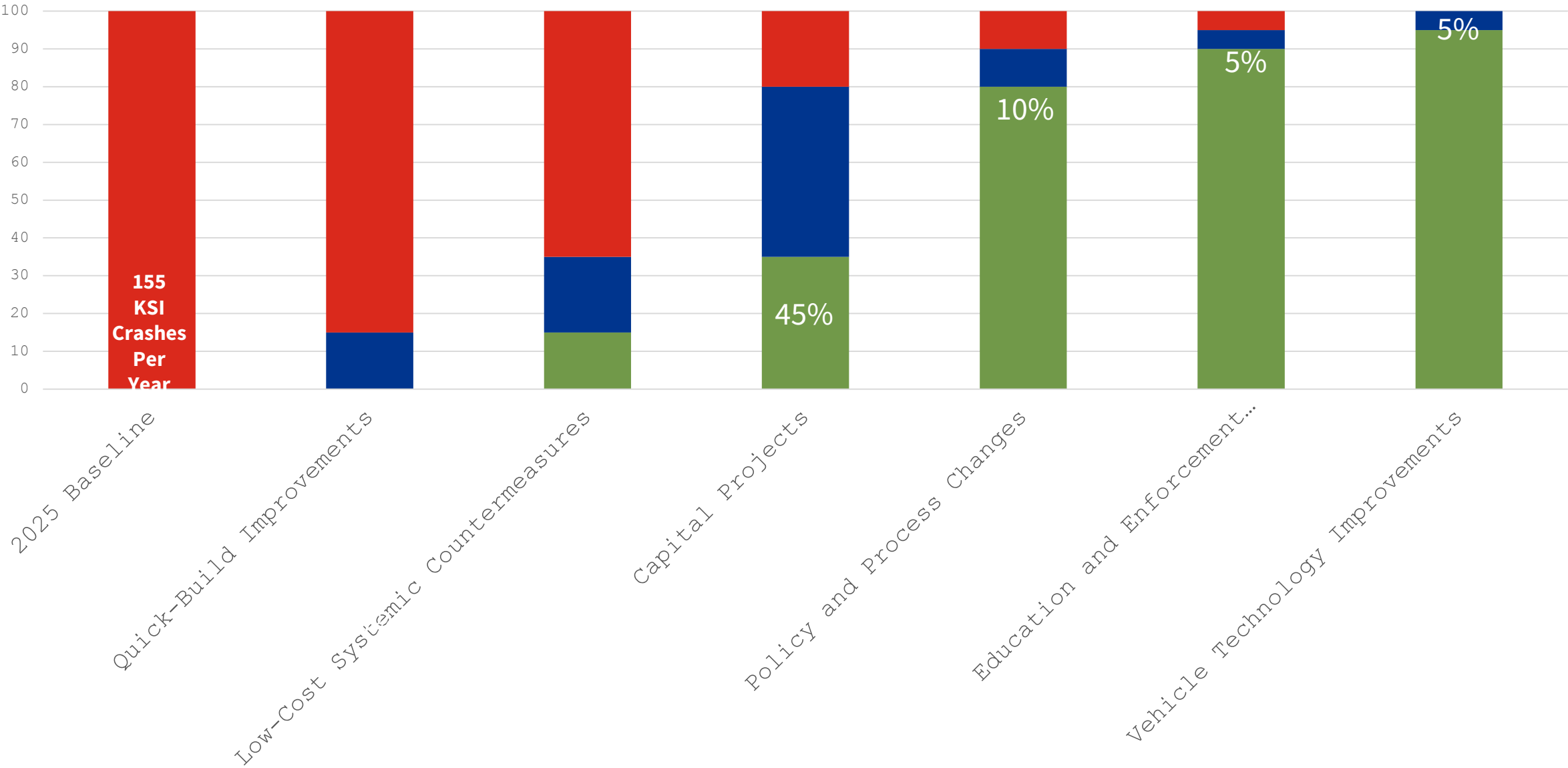
Use data and community feedback to identify the most dangerous roads in Columbus.

Develop recommendations for safety improvements on priority roadways.

Establish a process to track the implementation of the study's recommendation in a way that is publicly accessible and transparent.

Analyze existing policies and programs for opportunities to prioritize traffic safety and promote safe behaviors.

Goal: Zero Fatalities and Serious Injuries by 205



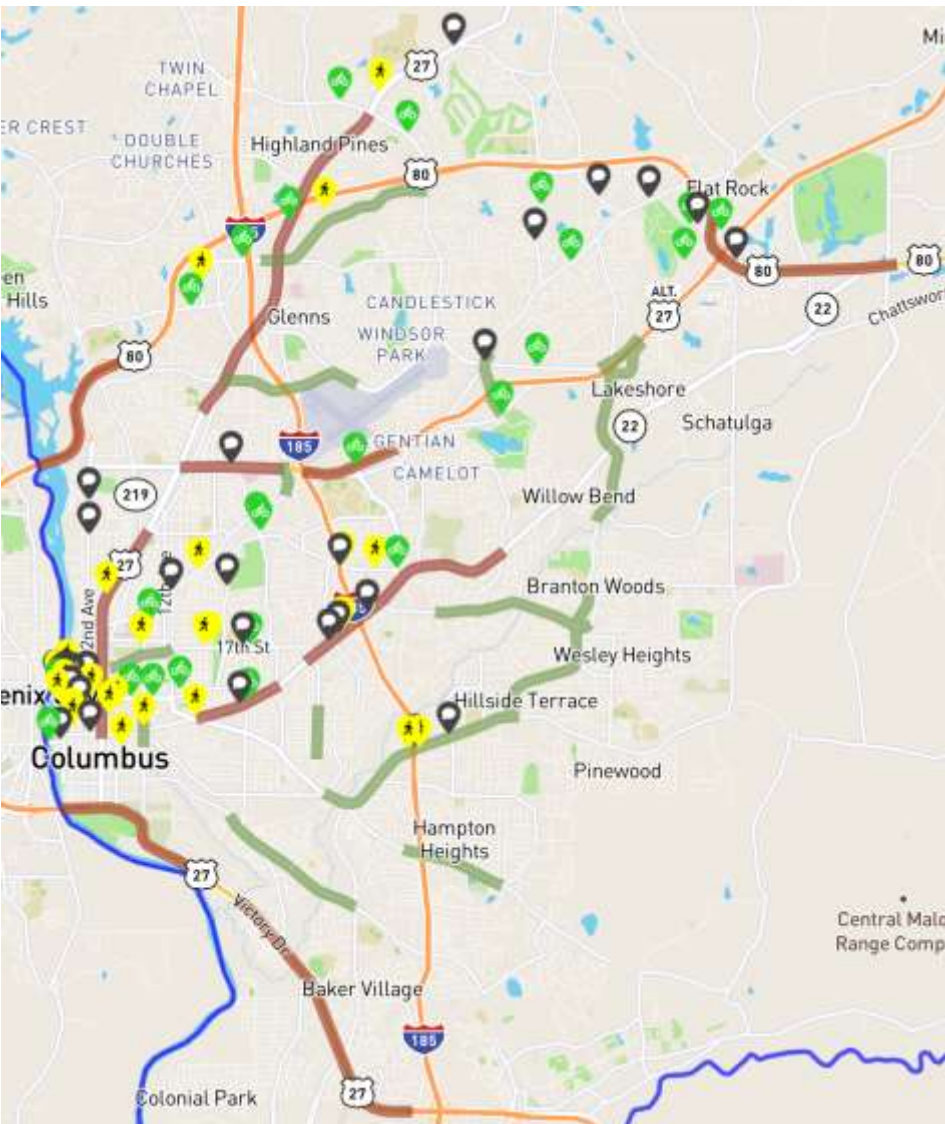
Outreach Summary

Outreach Summary: Meetings

- Two Public Meetings
 - May 19th
 - September 16th
- Four Stakeholder Meetings
 - May 19th
 - July 8th
 - September 16th
 - December 8th
- Two Focus Group Meetings
 - Bicycle and Pedestrian Advocates: May 20th
 - Mayor's Commission for Persons with Disabilities (MCPD): May 20th



Outreach Summary



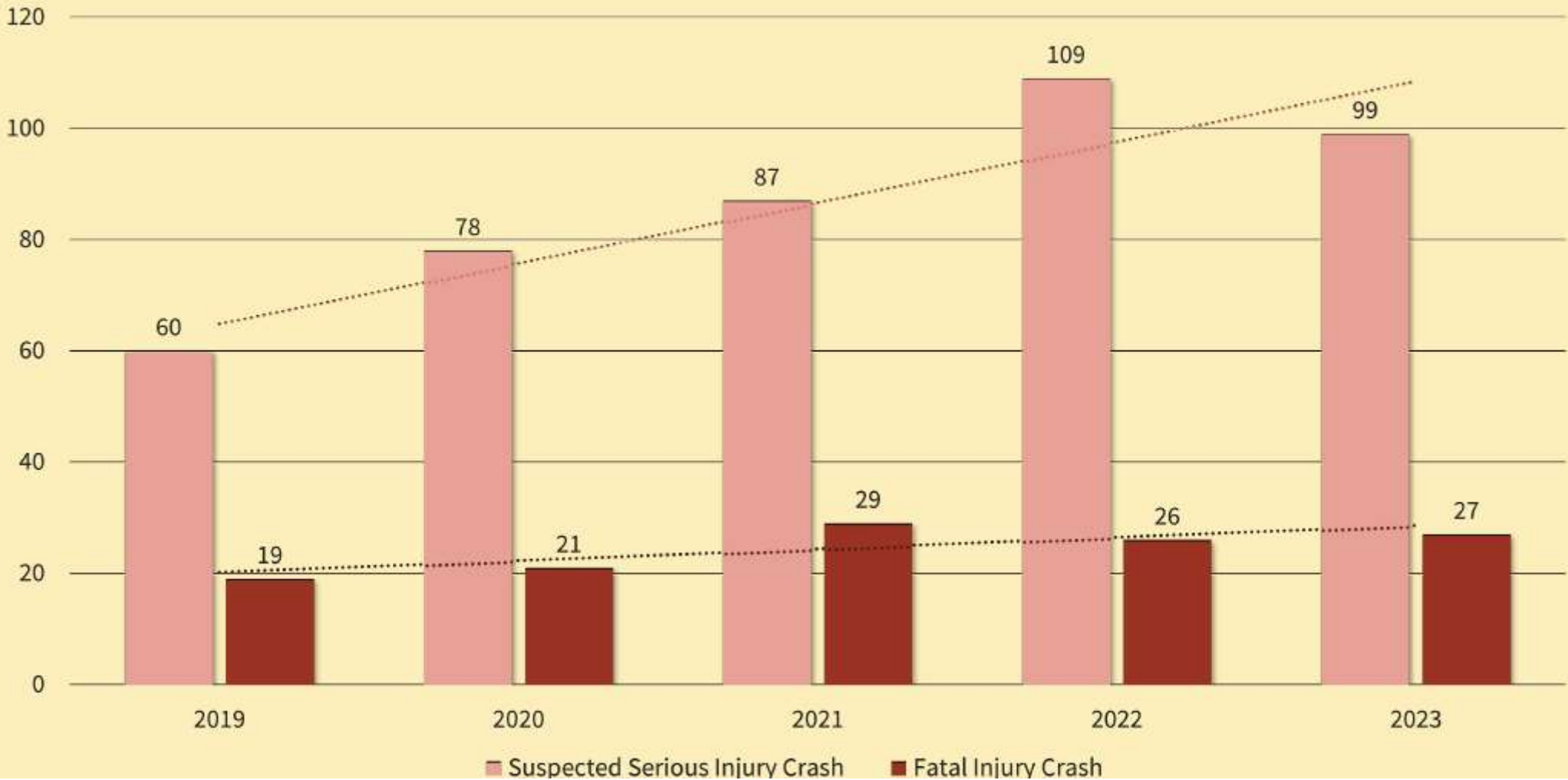
- Interactive Web Map
- Public Opinion Survey
- Project Website
- **Key Outreach Themes:**
 - Bicycle and pedestrian safety
 - Unsafe behaviors such as speeding and distracted driving
 - Victory Drive, Veterans Parkway, Buena Vista Road

Key Findings

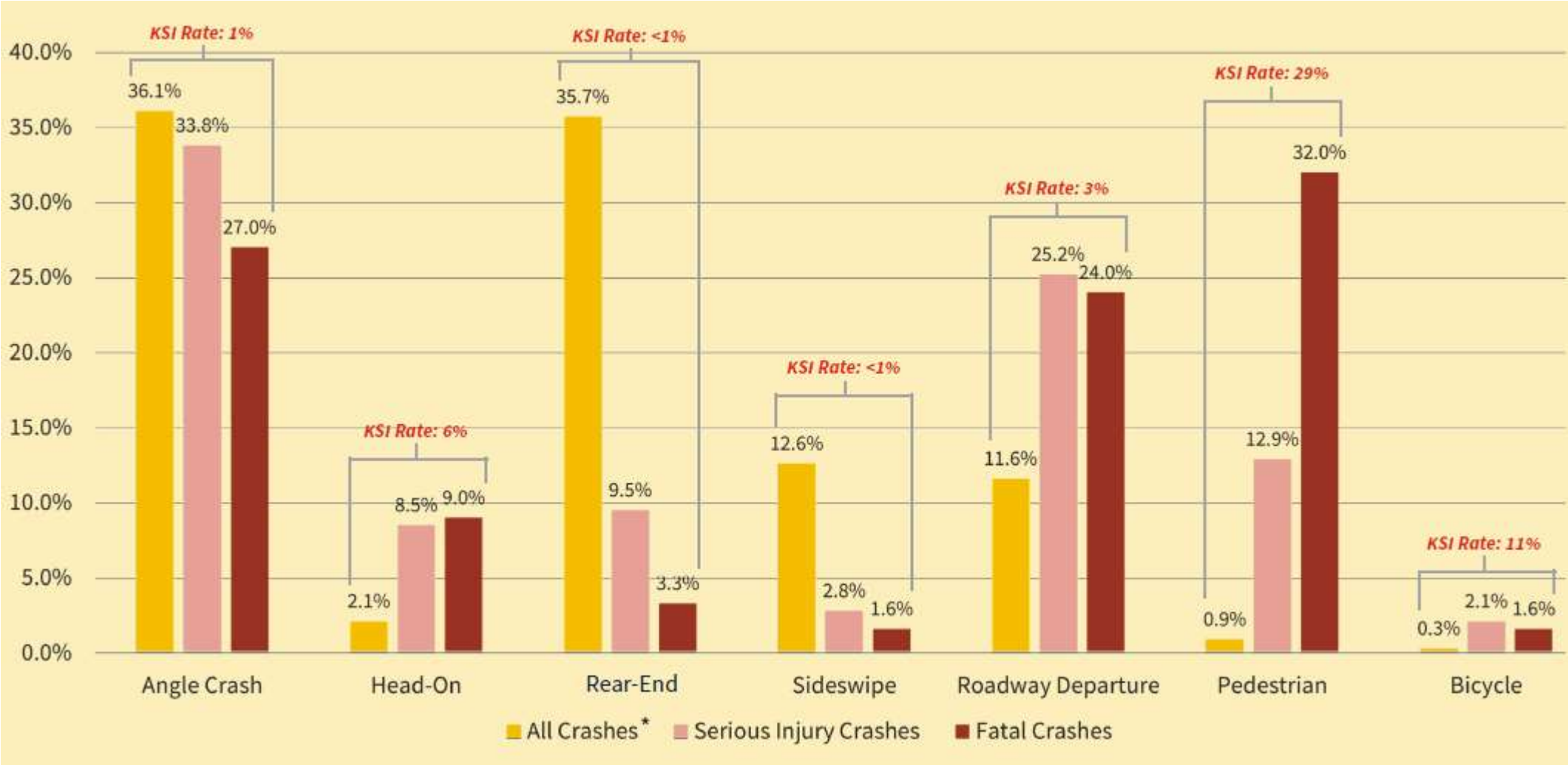
Key Findings: Safety Analysis

Annual Crash Trends

Annual KSI crashes have increased 59% from 2019 to 2023, at an average of 13% per year.



Key Findings: Safety Analysis



Key Findings: Safety Analysis



34%

of KSI crashes were related to improper occupant protection (e.g. seatbelt use)



22%

of KSI crashes were related to speeding or aggressive driving



20%

of KSI crashes were related to drug or alcohol impairment



Key Findings: High Injury Network

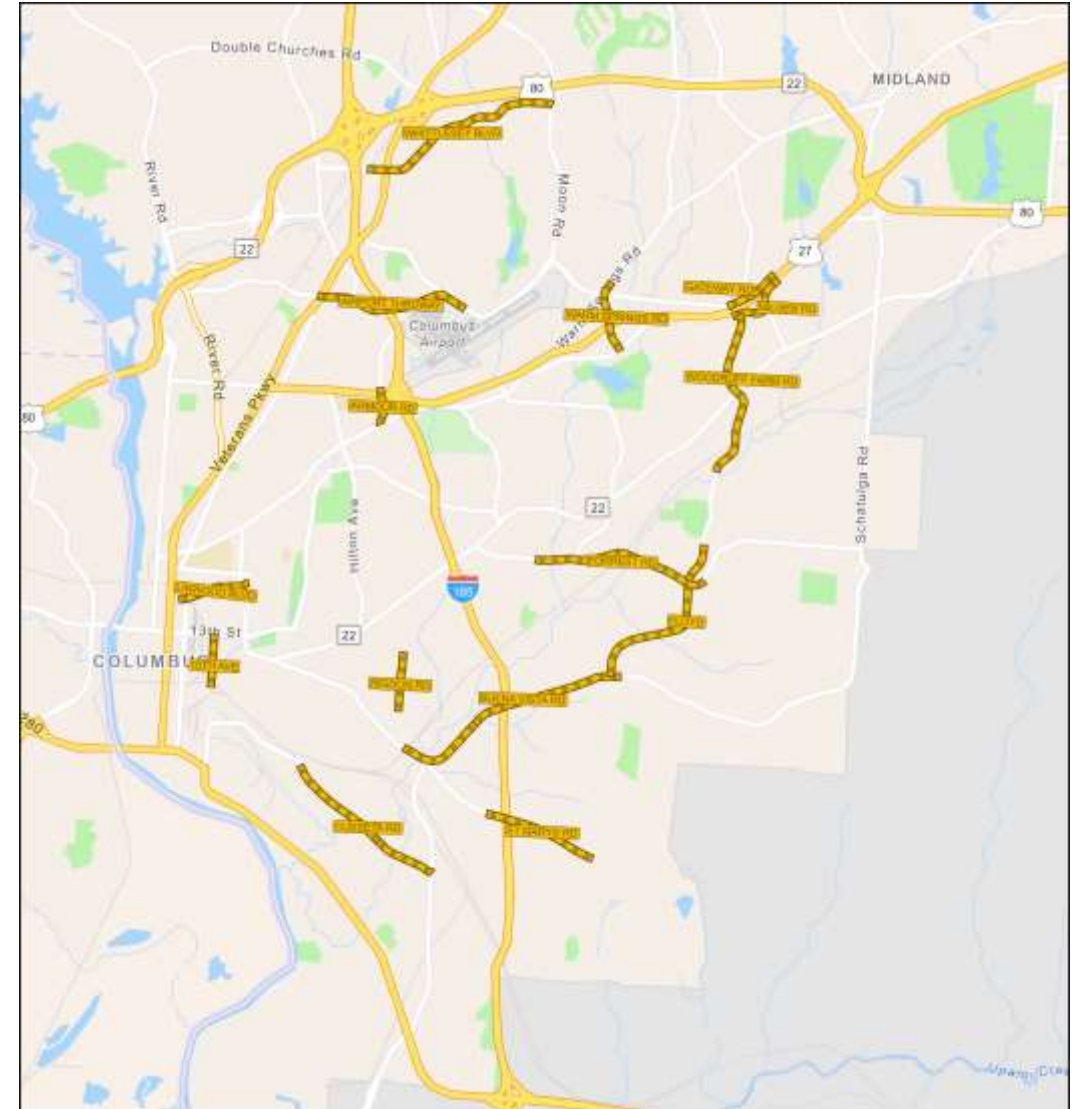
- Separated roads and crashes into State and Local, excluding interstates
- Calculated crash density weighted by severity for fatal, serious injury and non-serious injury crashes
- Analyzed and grouped segments

Network	% of total centerline miles	% of total fatal and severe crashes
Local	2%	21%
State	2%	24%
Local and State Combined	4%	45%



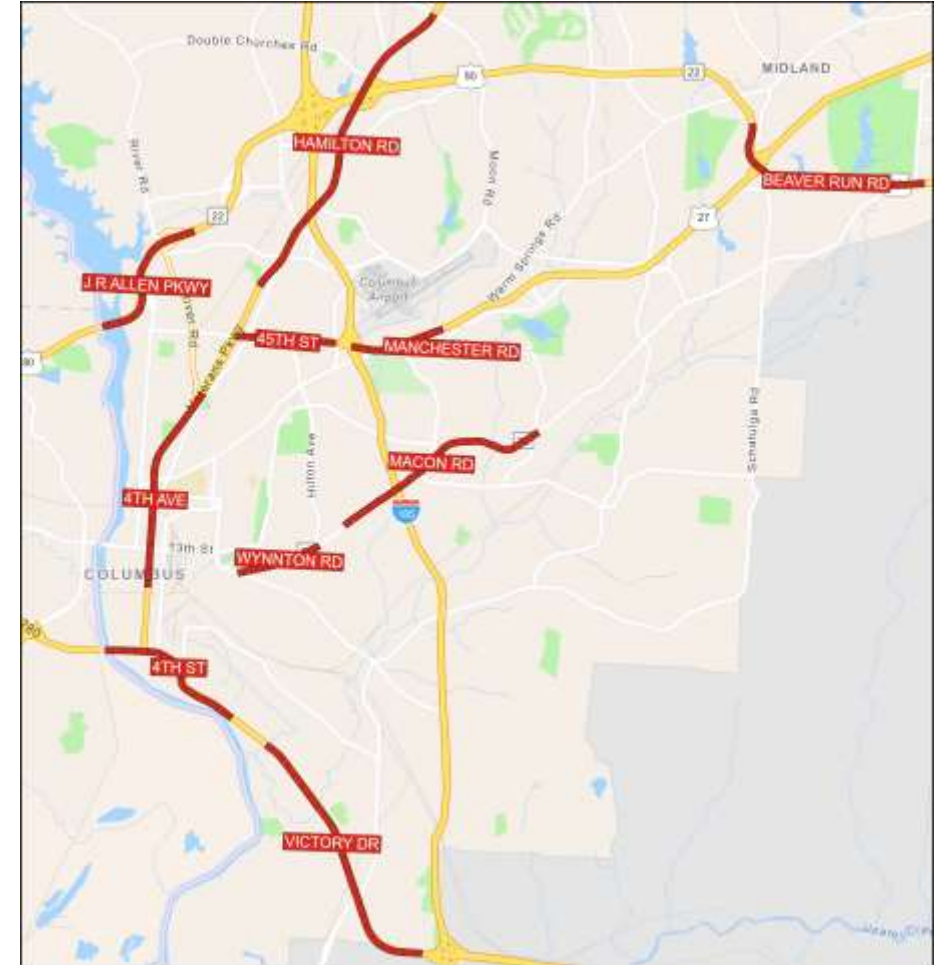
High-Injury-Network: Local Roadways

HIN ID	Roadway Limits	Segment Length (miles)	F/SI Crashes per mile
1	Milgen Road from west of Woodruf Farm Road to east of Statford Lane	0.7	10.3
2	Buena Vista Road from MLK Jr Blvd to east of Floyd Road	2.5	9.7
3	Rigdon Road from Melrose Drive to 8 th Street	0.6	8.4
4	10th Avenue from 13 th Street to 9 th Street	0.6	7.6
5	Gateway Road from Miller Road to Coca Cola Blvd	0.5	7.0
6	Forrest Road from Morris Road to east of Floyd Road	1.8	6.2
7	Linwood Blvd from 5 th Avenue to 13 th Avenue	0.7	5.4
8	Warm Springs Road from north of Miller Road to Milgen Road	0.7	5.4
9	Armour Road from north of Manchester Expressway to Warm Springs Road	0.4	5.2
10	Saint Marys Road from Playa Del Rey Drive to Lakefront Drive	1.2	5.2
11	Woodruff Farm Road from Milgen Road to south of Corporate Ridge Parkway	1.7	4.6
12	Whittlesey Blvd from West of Veterans Parkway to Moon Road	2.1	3.8
13	Airport Thruway from US 27 to Grumman Ave	1.6	3.2
14	Floyd Road Branton Lane to Buena Vista Road	1.9	2.7
15	Cusseta Road from 26 th Avenue to Fort Benning Road	1.7	2.3

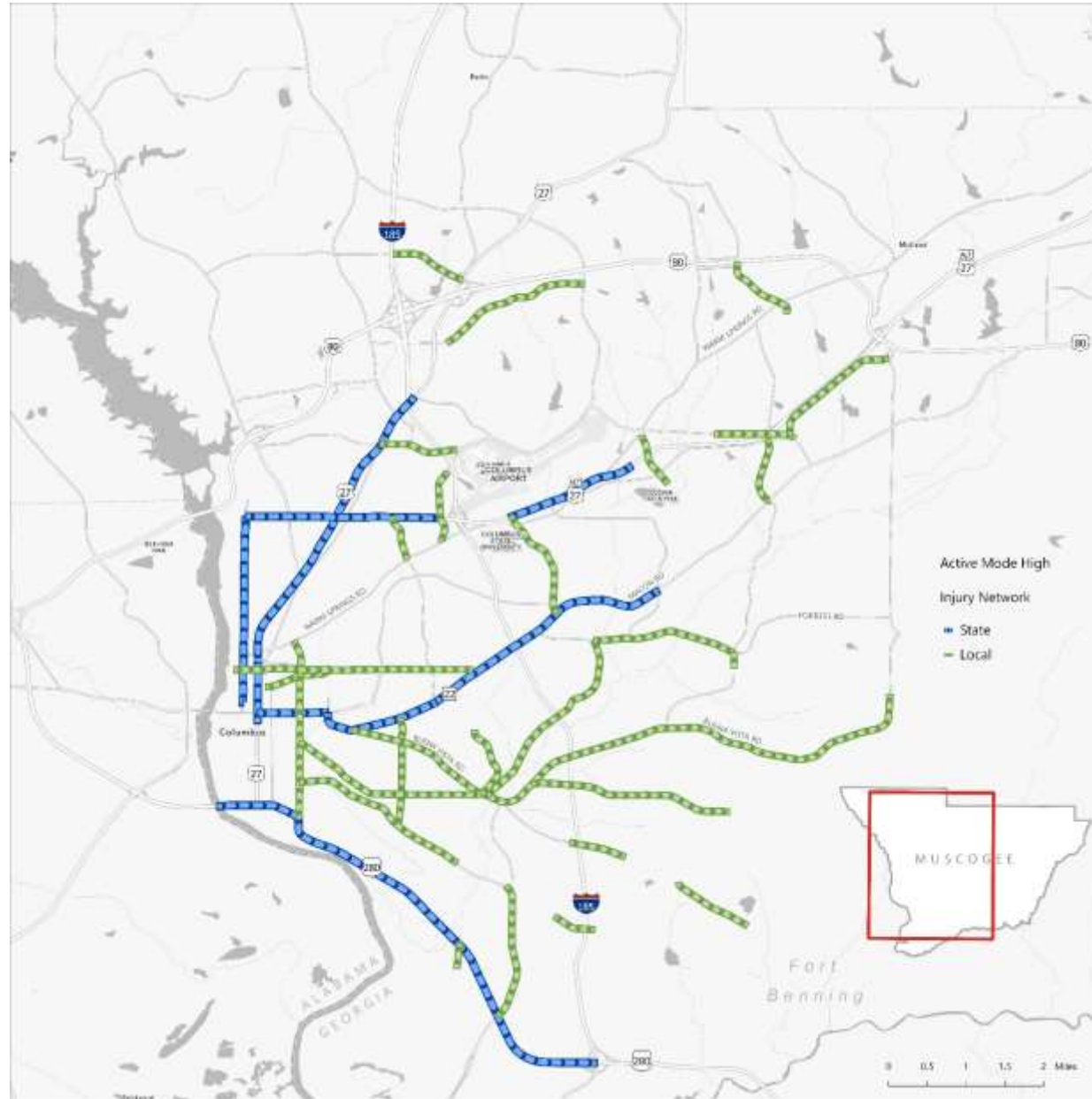


High-Injury-Network: GDOT Roadways

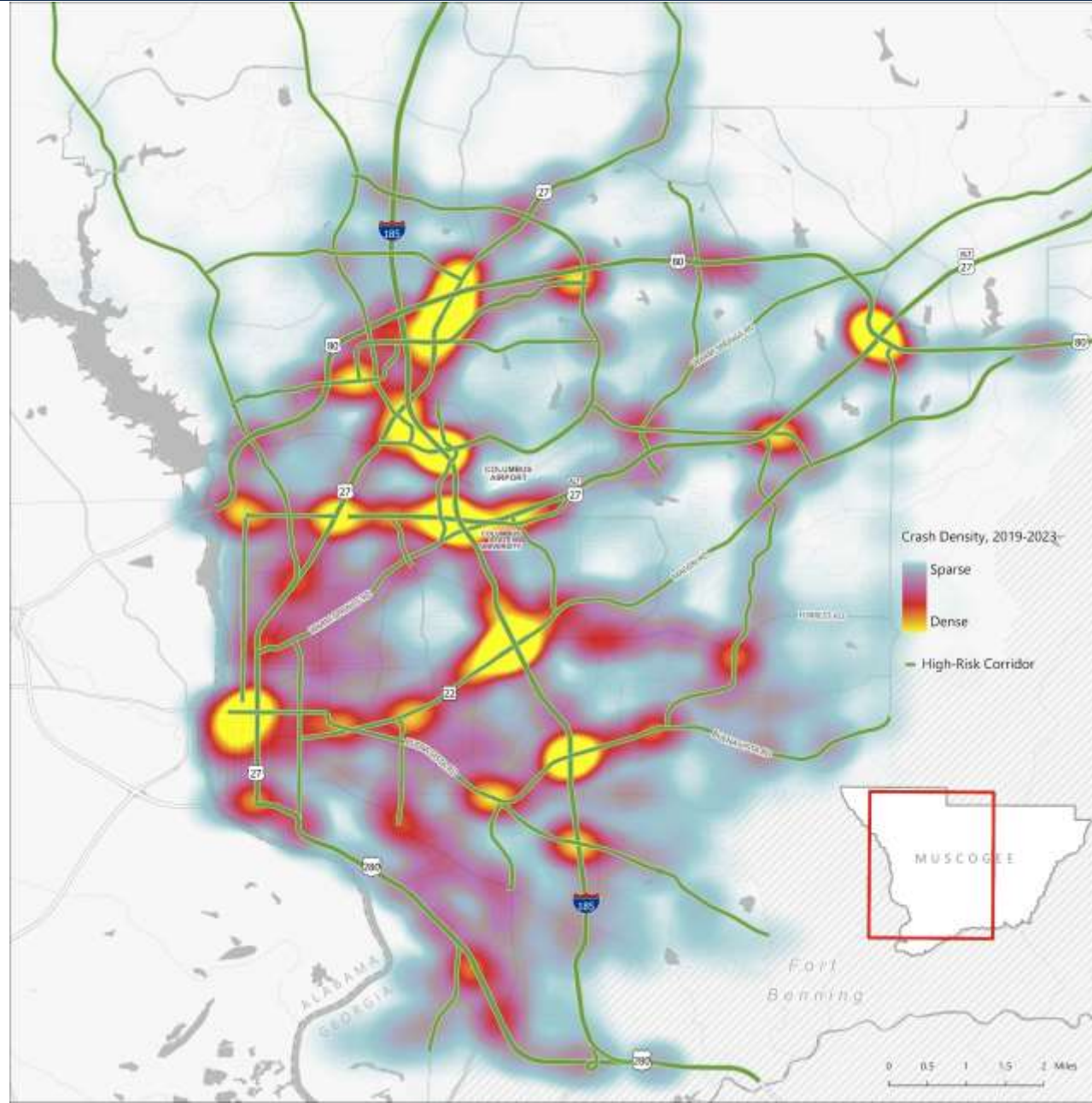
	Roadway Limits	Segment Length (miles)	F/SI Crashes per mile
1	US 280/Victory Drive from 30 th Ave to I-185	3.2	7.8
2	Alt US 27/Manchester Expressway from I-185 to Reese Road	1.1	7.3
3	US 27/Veterans Parkway from River Road to 10 th Street	2.4	7.1
4	US 208/4th Street from state line to west of 22 nd Avenue	1.8	6.6
5	Macon Road from Rigdon Road to Reese Road	2.6	5.7
6	US 80/ JR Allen Parkway from state line to east of River Road	1.7	5.2
7	US 27/Veterans Parkway from Williams Road to Alexander Street	3.8	5.0
8	45th Street/Manchester Road from US 27 to Armour Road	1.7	4.2
9	Wynnton Road from Buena Vista Road to 13 th Street	1.0	2.0
10	US 80/Beaver Run Road from north of Flat Rock Road to Technology Parkway	2.5	1.6



High-Injury-Network: Bicycle/Pedestrian



High-Injury-Network: High Risk Network



Recommendations

Project Prioritization

Score	Metric	Potential Points
<i>Safety Score</i>	Number of K/SI Crashes per mile rank	5
<i>Risk Score</i>	Replica Safe Streets Planner Risk Score rank	3
<i>Ped/Bike Score</i>	Project overlaps with pedestrian/bicycle HIN?	2
<i>Focus Crash Score</i>	Project overlaps with focus crash priority area(s)?	2
<i>Underserved Area Score</i>	Project overlaps with priority zip code?	1
<i>Planned Projects Score</i>	Project overlaps with priority Complete Streets project in the 2050 MTP?	1
<i>Engagement Score</i>	Feedback received on corridor during outreach?	1
<i>Total Points</i>		15

Project Prioritization

Local

Corridor	Limits	Initial Score
<i>Saint Mary's Road</i>	Buena Vista Road to Moye Road	11
<i>Buena Vista Road</i>	MLK Jr Boulevard to E of Floyd Road	10.5
<i>Warm Springs Road Connector</i>	N of Miller Road to Milgen Road	9.9
<i>Milgen Road</i>	Warm Springs Road Connector to E of Stratford Lane	8.8
<i>Forrest Road</i>	Morris Road to E of Floyd Road	8.4
<i>10th Avenue</i>	13th Street to 9th Street	8.2
<i>Airport Thruway</i>	US 27 to Grumman Avenue	8
<i>Woodruff Farm Road</i>	Milgen Road to S of Corporate Ridge Parkway	7.6
<i>Armour Road</i>	Airport Thruway to Warm Springs Road	7.3
<i>Whittlesey Blvd</i>	W of Veterans Pkwy to Moon Road	7.1
<i>Rigdon Road</i>	Melrose Drive to 8th Street	7
<i>Linwood Blvd</i>	5th Ave to 13th Ave	6.7
<i>Gateway Road</i>	Miller Road to J R Allen Parkway	5.9
<i>Floyd Road</i>	Branton Lane to Buena Vista Road	4.6
<i>Cusseta Road</i>	26th Avenue to Fort Benning Road	3.5

GDOT

Corridor	Limits	Initial Score
<i>US 27/Veterans Parkway</i>	River Road to 10th Street	11
<i>US 280/Victory Drive</i>	30th Ave to I-185	10.5
<i>US 27/Veterans Parkway</i>	N of Miller Road to Milgen Road	9.9
<i>US 280/4th Street</i>	State Line to 30th Avenue	8.8
<i>SR 22/Macon Road</i>	Rigdon Road to Reese Road	8.4
<i>US 80/Beaver Run Road</i>	W of Flat Rock Road to Technology Parkway	8.2
<i>US 80/J R Allen Parkway</i>	State Line to E of River Road	8
<i>US Alt 27/Manchester Expressway</i>	I-185 to Reese Road	7.6
<i>SR 22/Wynnnton Road</i>	Buena Vista Road to Rigdon Road	7.3
<i>US Alt 27/Manchester Expressway</i>	US 27 to Armour Road	7.1

Priority Project Screening

- Detailed crash review
 - KSI Crashes
 - Bike/Ped
 - Angle
 - Lane Departure
- Desktop Screening
 - Recommendation
 - Justification
 - Planning level cost estimate

FHWA

Proven Safety Countermeasures



Proven Safety Countermeasures

Pedestrian/Bicyclist



**Sidewalks
and Bike
Facilities**



**Crosswalks with
beacons**



**Roadway
Reconfiguration**

Lane Departure



**Curve
Warning
Signs**



**Rumble
Strips**



**Wider
Edge Lines**

Intersection



**Retro-
reflective
Backplate
s**



**Yellow and
Red
Change
Intervals**



**Access
Management**

Crosscutting



Lighting

Actionable Strategies

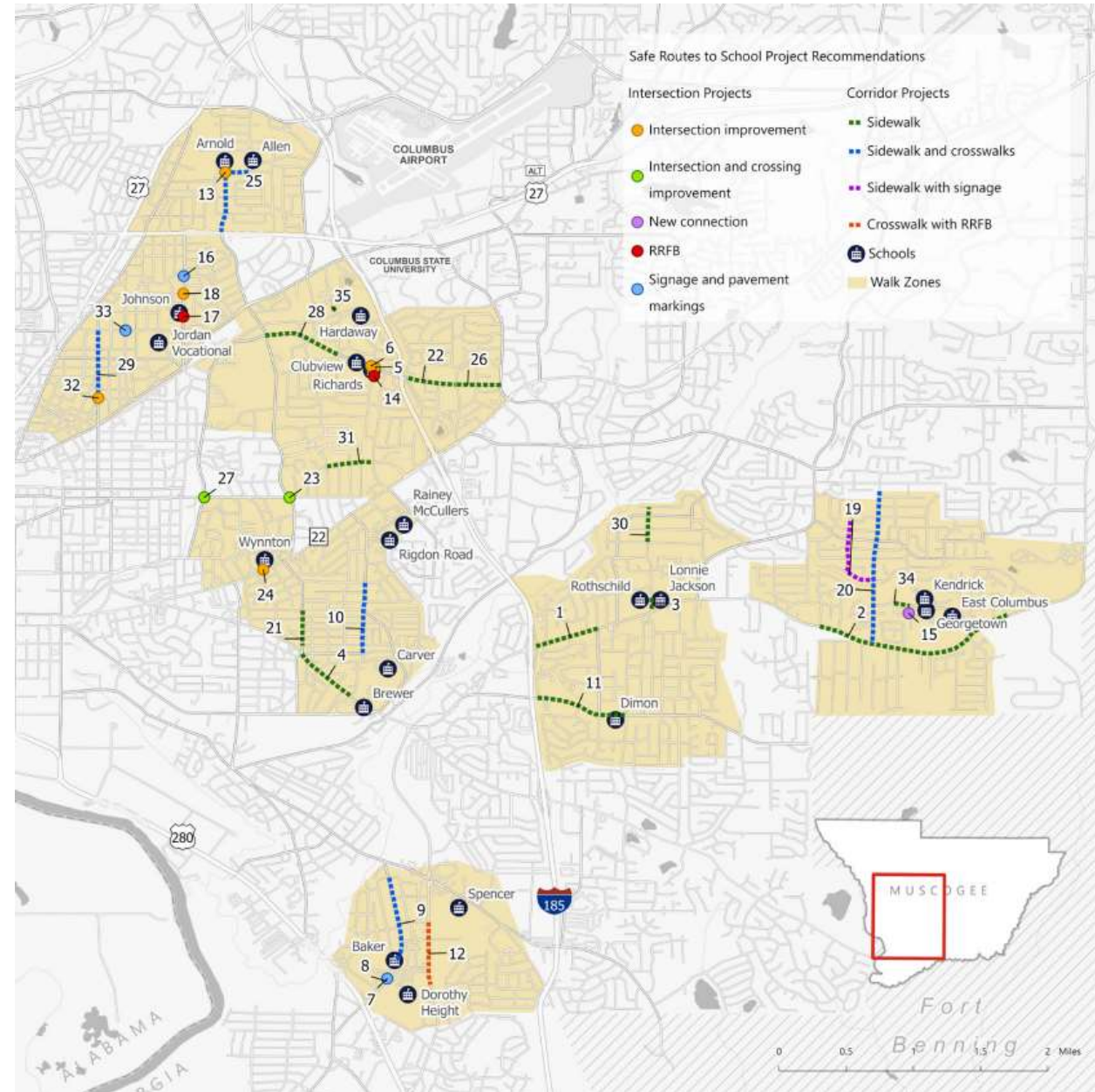


CATEGORY	DESCRIPTION OF RECOMMENDATION
Project	Specific, location based infrastructure improvements
Program	The agency or agencies that will be primarily responsible for carrying out or implementing the recommended action
Policy	Changes to rules, regulations, or guidelines
COST	
-	Can be completed with existing resources
\$	Will require minimal capital expenditures or additional staff resources
\$\$	Will require moderate capital expenditures or additional staff resources
\$\$\$	Will require extensive capital expenditures or additional staff resources
TIMELINE	
Short-Term	0-3 Years
Mid-Term	3-5 Years
Long-Term	5+ Years

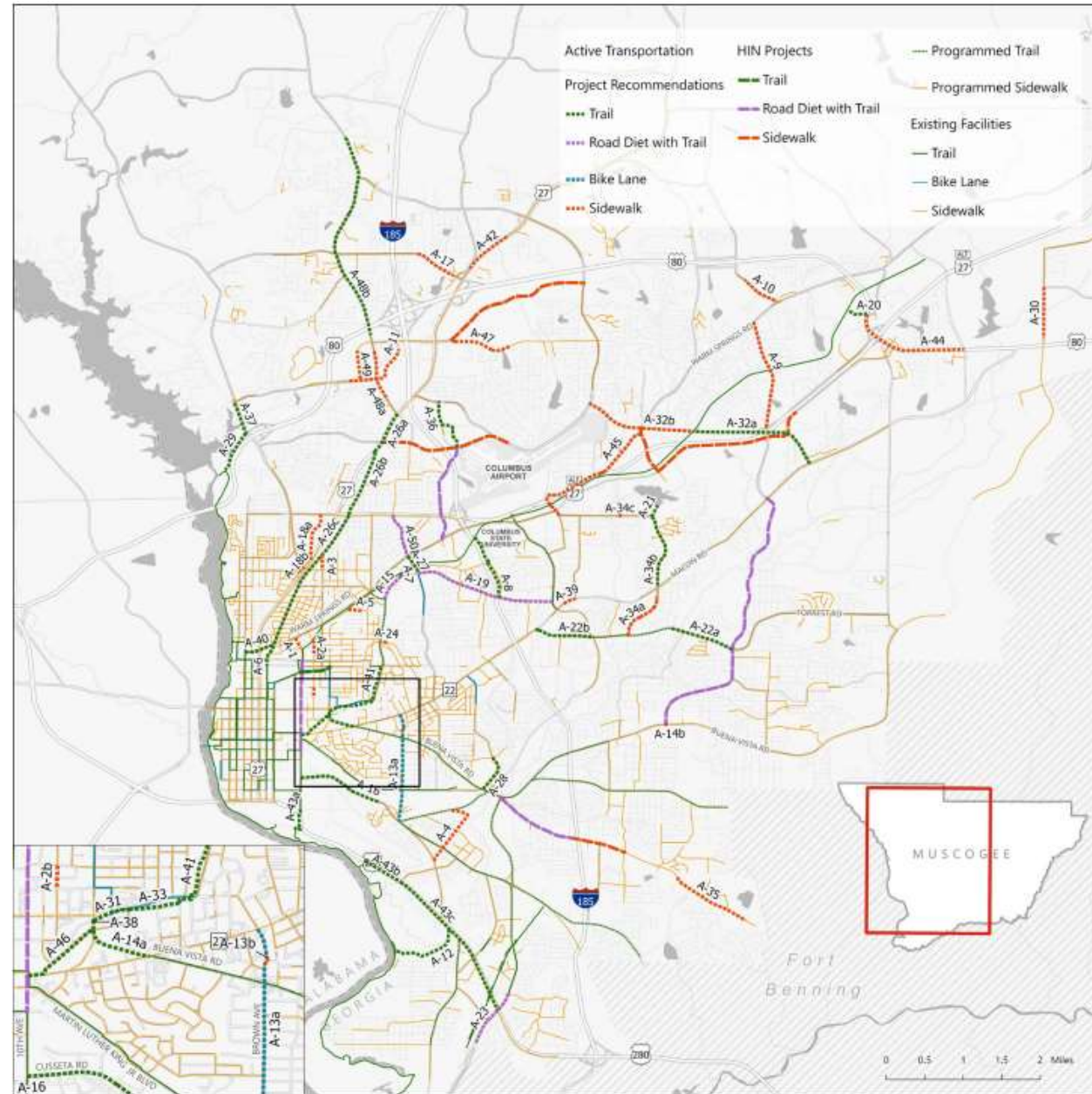
Parallel Efforts

Safe Access to Schools

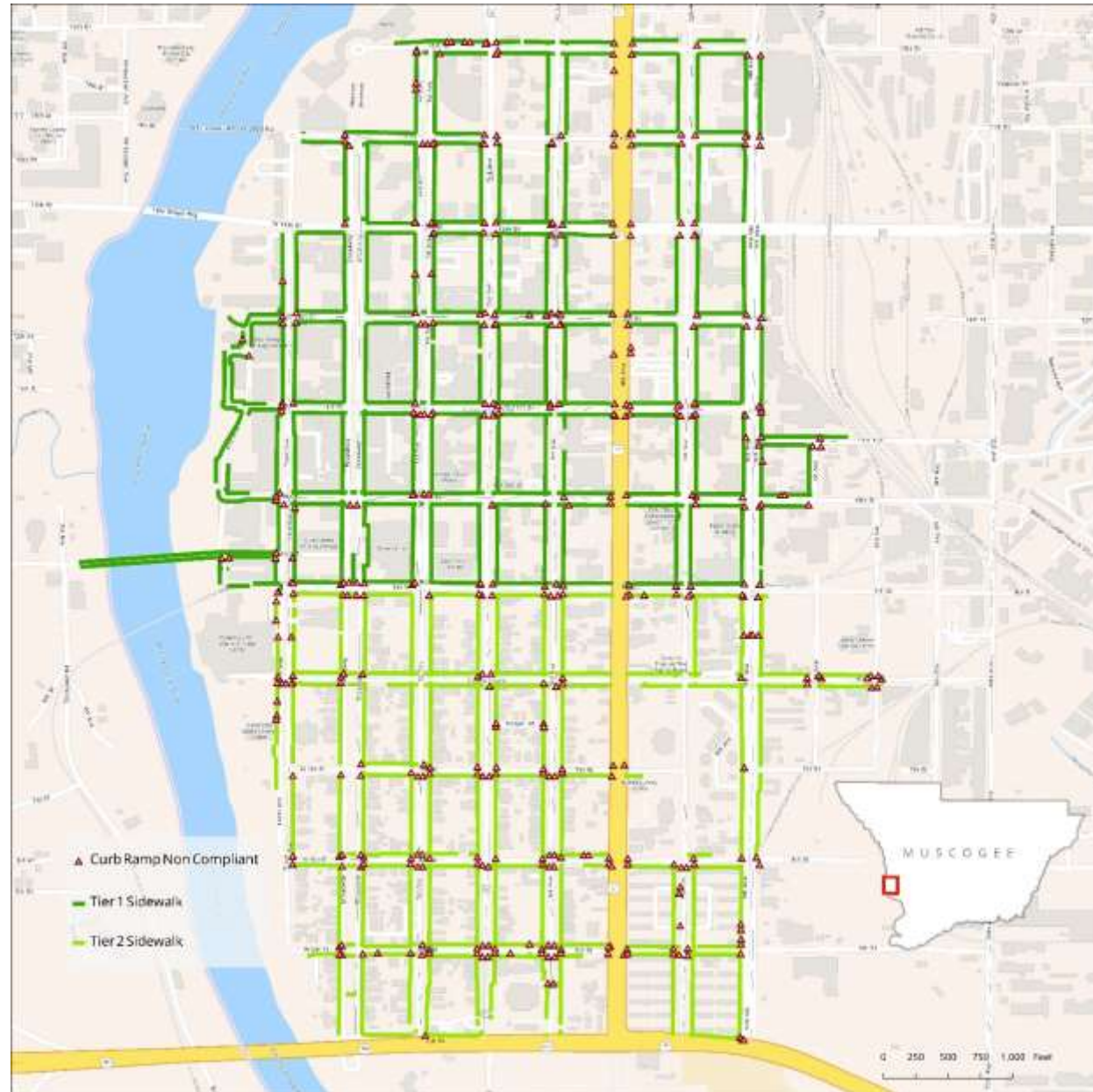
- School Areas:
 - Kendrick High School
 - Jordan Vocational High School
 - Spencer High School/Baker Middle School
 - Carver High School and Brewer Elementary School
 - Hardaway High School
 - Rothschild Leadership Academy
 - Allen Elementary School
 - Wynnton Elementary School



Bicycle and Pedestrian Network

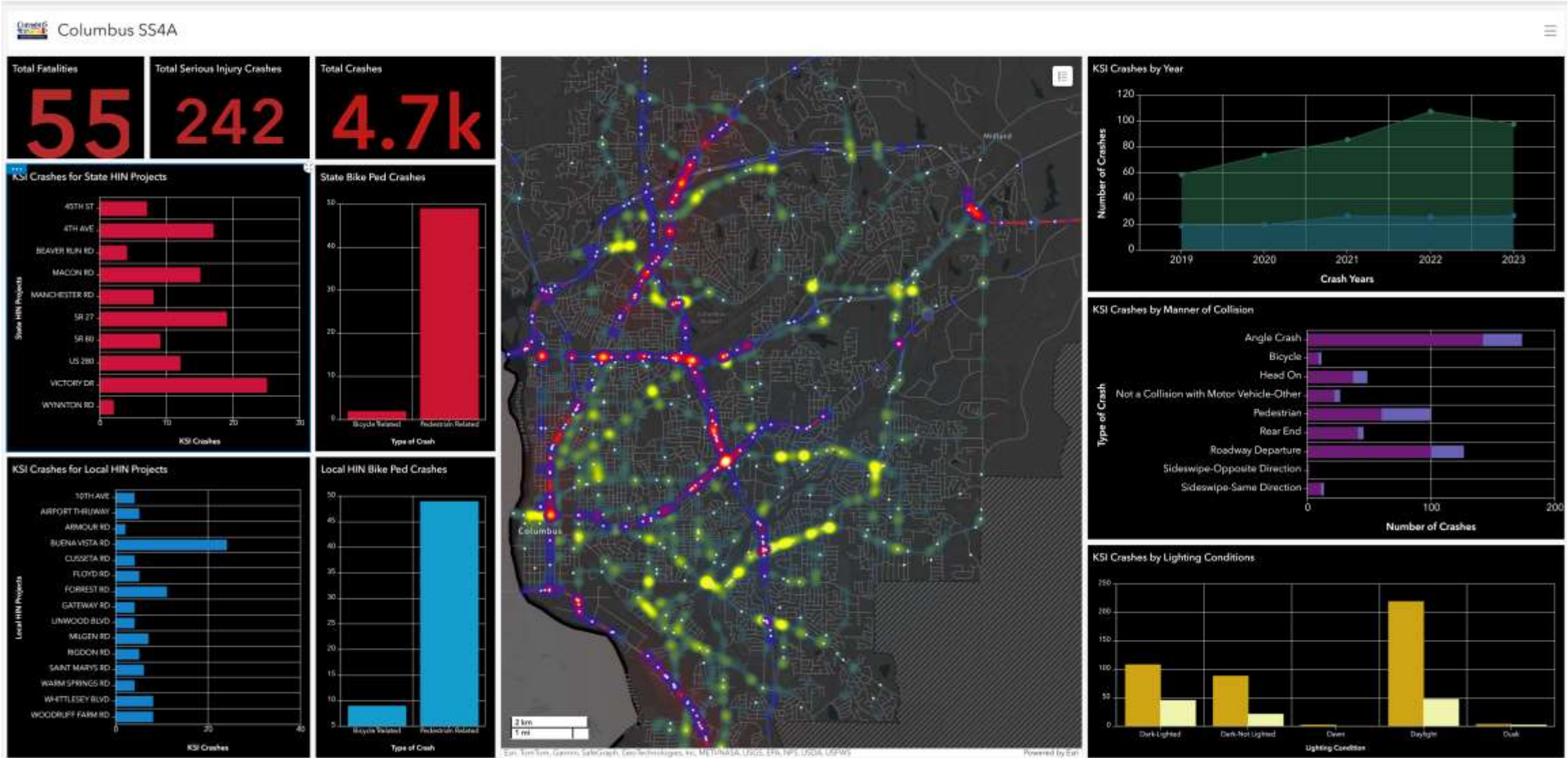


ADA Assessment



Implementation

Safety Dashboard



Implementation Plan

- Addition analysis for priority recommendations
- Planning level cost estimates
- Screening of existing projects for systemic safety improvements

Recommended Action

- Approve Safety Action Plan and adopt supporting resolution