



Interstate 14: Columbus's Interstate



National Recognition



Meaningful Legislation



Reality





Why I-14?



Interstate 14



Why I-14 for Columbus?

- ▶ Interstate Connection
- ▶ Enhanced Economic Development
- ▶ Strategic Military Impact

A screenshot of the Georgia Center for Site Selection (GCSS) website. The page features a navigation menu with options like 'Basic Search', 'Advanced Building Search', and 'Advanced Site Search'. The main content area includes a welcome message and a detailed 'Advanced Site Search' form. The form contains fields for Listing ID, Building/Site Name, Minimum Size, Maximum Size, Units (set to Acres), Distance to Interstate, Distance to Major Highway, Distance to Airport, and Railroad Access (set to No). A red circle highlights the 'Distance to Interstate' field and its 'Miles' unit dropdown.

Home | Search Sites | Search Buildings | Community Profiles | Incentives & Taxes | Georgia Advantage | About Us | Contact Us

GEORGIA

CENTER FOR SITE SELECTION

GEMC
Georgia Electric Membership Corporation

Welcome to the Georgia Center for Site Selection ...your connection to Georgia's best locations.

This site was developed with corporate real estate executives and site selection consultants in mind. Content was streamlined to simply provide searchable databases for available sites and available buildings, community statistics and a guide to state incentives. Plus, all our information is FREE and CONFIDENTIAL.

Once you've conducted your initial search and are ready to speak with a state economic development representative, the GCSS staff is ready to help. Please contact us at (800) 339-7185 or ga-sitesinfo@georgiaemc.com.

GCSS is a service of Georgia Electric Membership Corporation.

Advanced Site Search

Basic Search | Advanced Building Search

Listing ID:

Building/Site Name:

Minimum Size:

Maximum Size:

Units: Acres

Distance to Interstate: Miles

Distance to Major Highway: Miles

Distance to Airport: Miles

Railroad Access: No





Who Supports I-14?



City Council

GDOT

MPO

Congress

State Govt

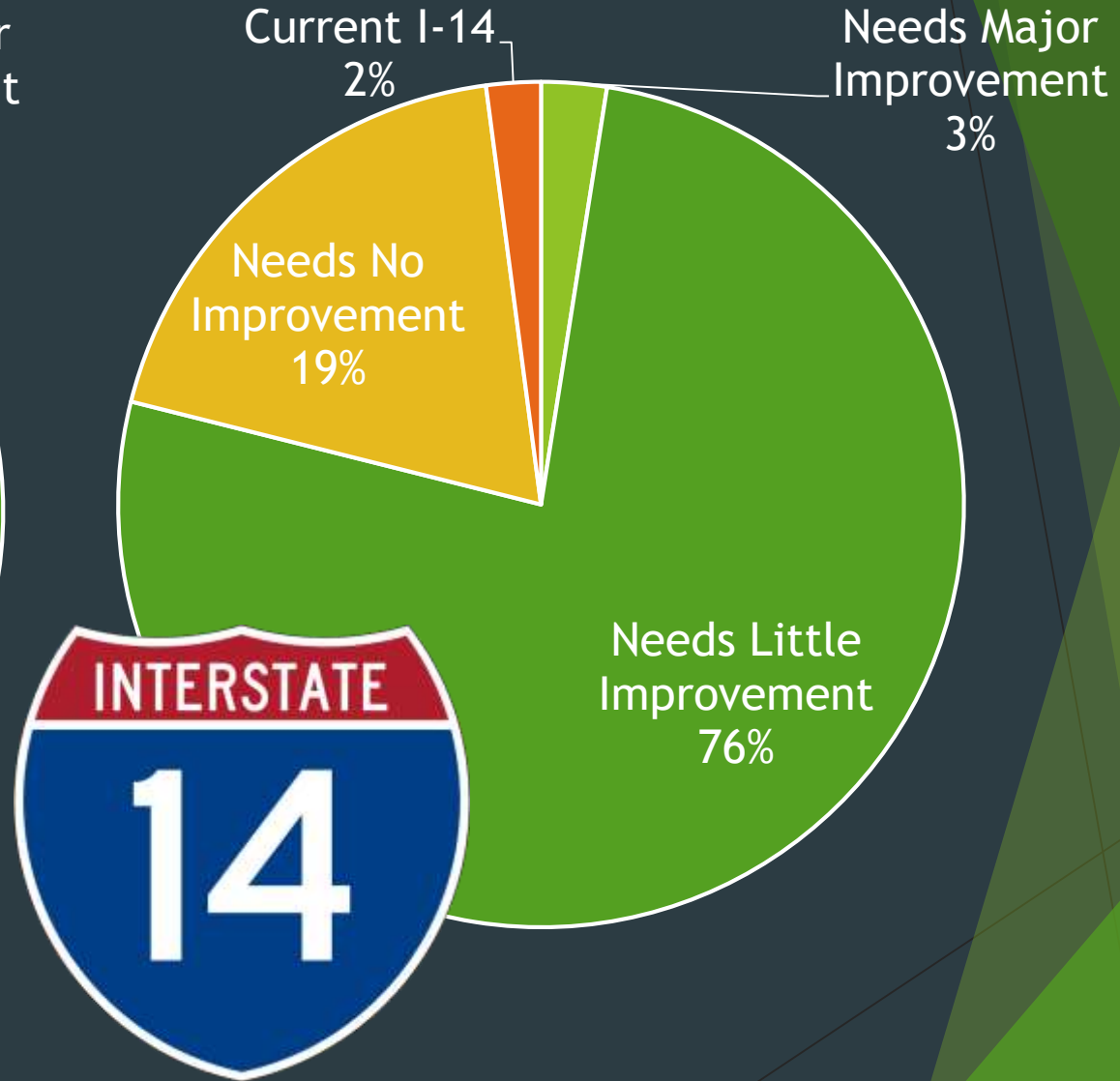
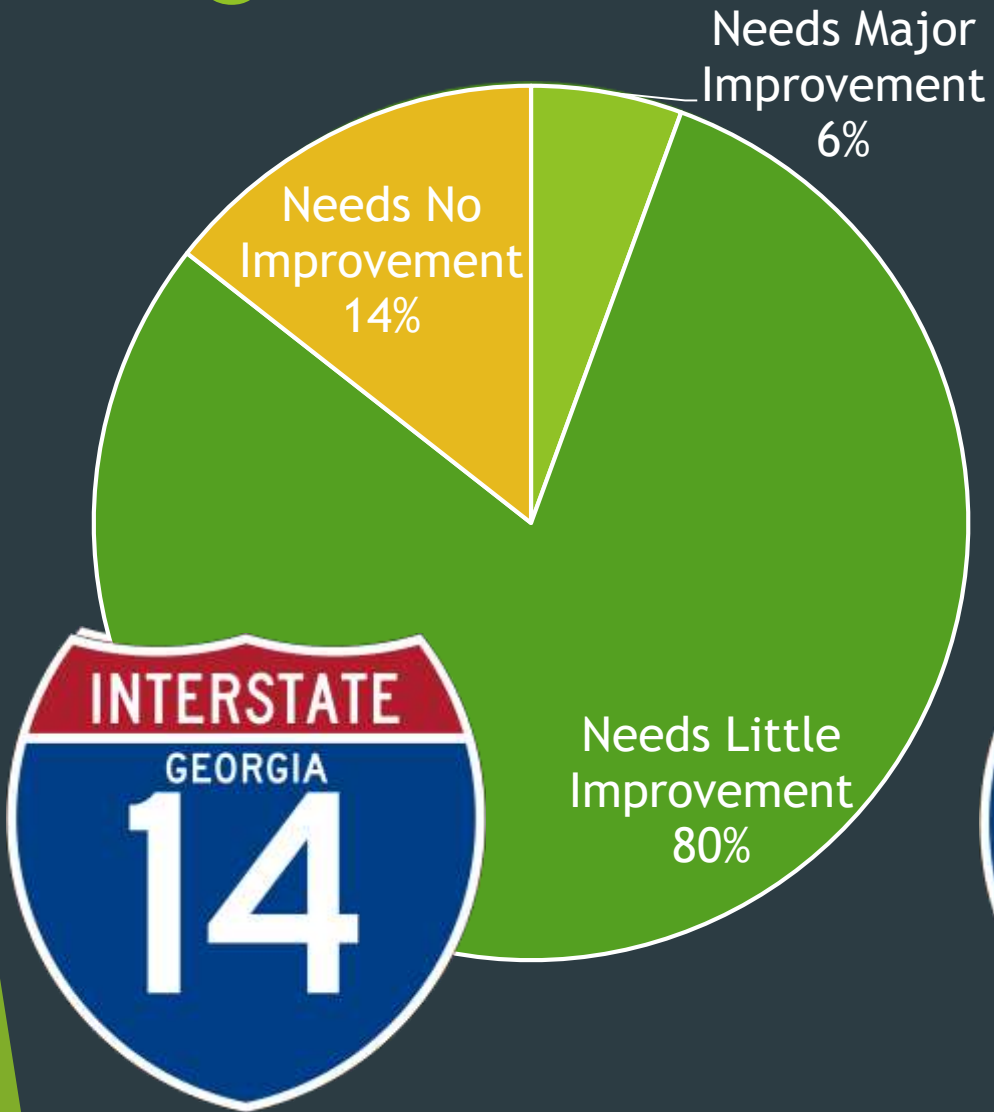
Surrounding
Government



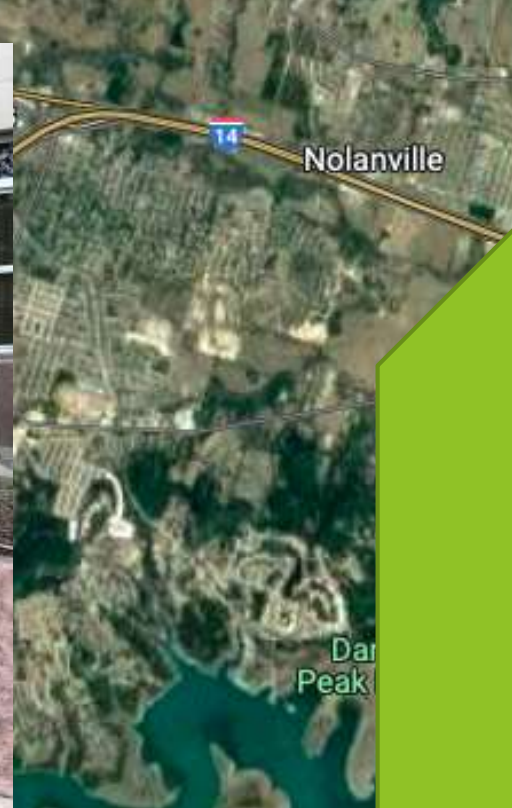
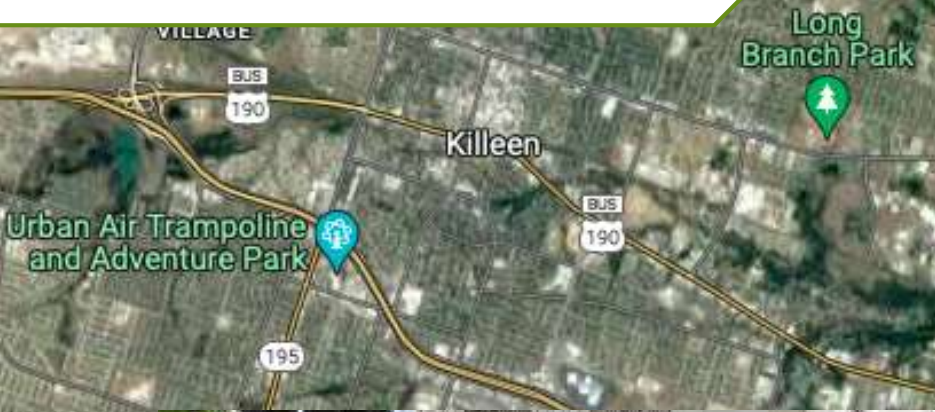
Where are we?



Progress



I-14 Killeen, Texas

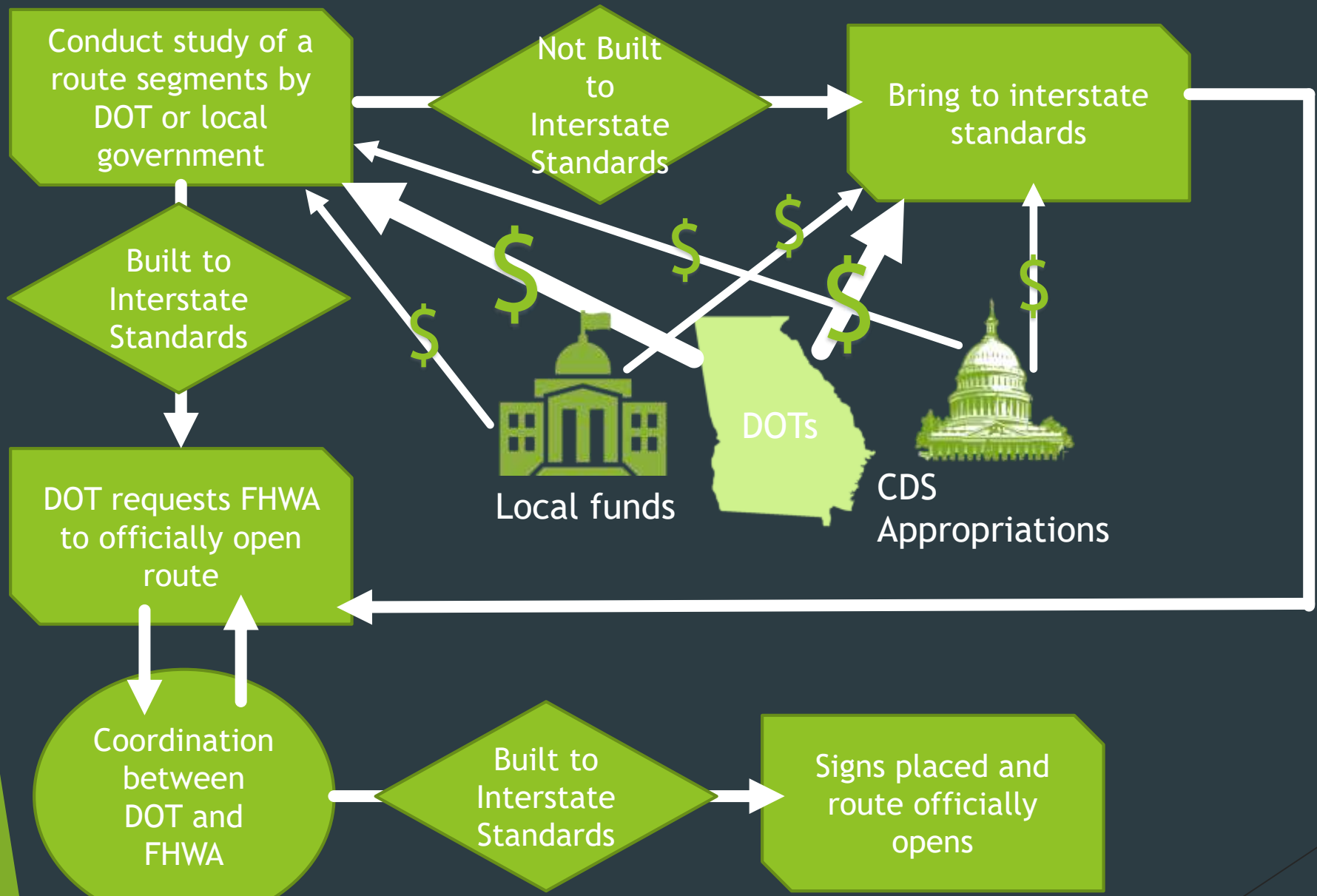


“When I-14 Texas was opened not all interstate standards were met to the tee. The FHWA allows some leeway for designated routes.”
-TxDOT



What's Next?





Process



Action Steps



Send the Georgia Department of Transportation a letter requesting they petition the FHWA to open I-14 in Columbus.



Direct Planning to submit a CDS request application for \$5 million for either:

- (a) needed improvements to the route; and
- (b) a feasibility and route study, using [this link](#).



I-14, Killeen, TX





Questions?