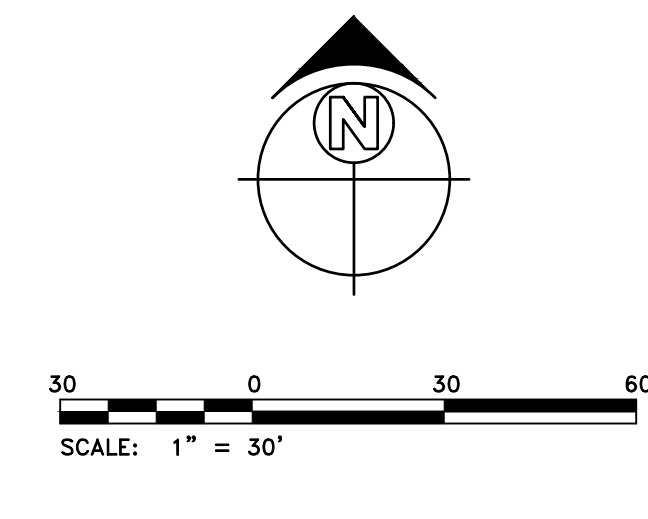


4th STREET



PHONE: (706) 327-8308
WWW.MOONMEEK.COM
100 SOUTHERN WAY, SUITE A
COLUMBUS, GA 31904

MOON MEES & ASSOCIATES, INC.
CIVIL ENGINEERS
LANDSCAPE ARCHITECTS
LAND SURVEYORS
ENVIRONMENTAL CONSULTANTS

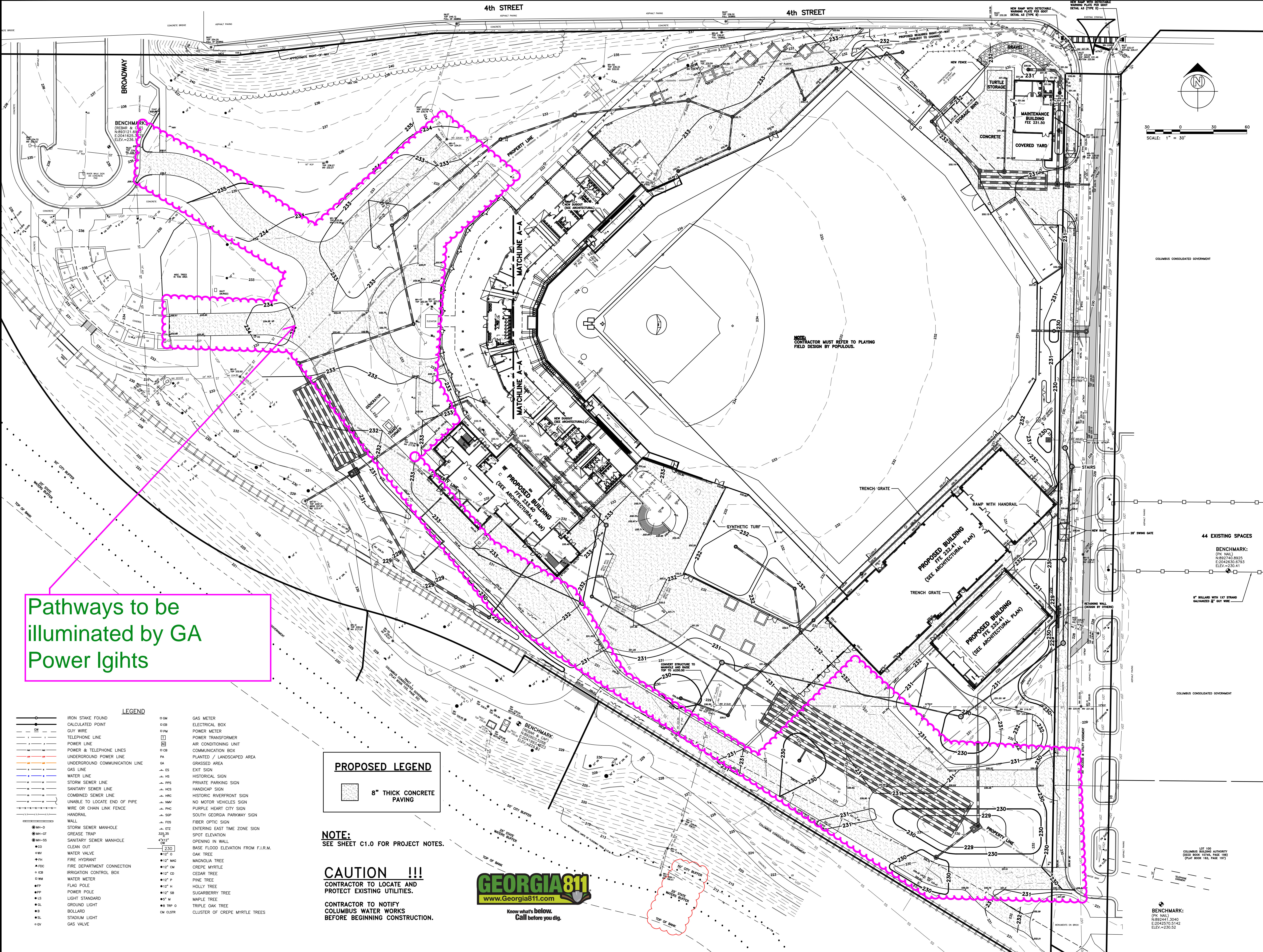
OVERALL GRADING PLAN
GOLDEN PARK RENOVATIONS
LYING IN COWETAH FALLS RESERVE
COLUMBUS, MUSCOGEE COUNTY, GEORGIA

REVISIONS:
4/10/24 - REVISED PER CITY COMMENTS
6/14/24 - COW SUBMITTAL
7/18/24 - REVISED MAINTENANCE AREA
7/18/24 - REVISED GROUP SALES AND KIDS AREAS, ADDED LANDSCAPING



GSWCC# 8159
MMA# 2024007
DATE: 4/22/24
SCALE: 1" = 30'

SHEET No.
C5.0



Pathways to be illuminated by GA Power lights

LEGEND	
—●—	IRON STAKE FOUND
—○—	CALCULATED POINT
—○—	GUY WIRE
—○—	TELEPHONE LINE
—○—	POWER LINE
—○—	POWER & TELEPHONE LINES
—○—	UNDERGROUND POWER LINE
—○—	UNDERGROUND COMMUNICATION LINE
—○—	GAS LINE
—○—	WATER LINE
—○—	STORM SEWER LINE
—○—	SANITARY SEWER LINE
—○—	COMBINED SEWER LINE
—○—	UNABLE TO LOCATE END OF PIPE
—○—	WIRE OR CHAIN LINK FENCE
—○—	HANDRAIL
—○—	WALL
—○—	STORM SEWER MANHOLE
—○—	GREASE TRAP
—○—	SANITARY SEWER MANHOLE
—○—	CLEAN OUT
—○—	WATER VALVE
—○—	FIRE HYDRANT
—○—	FIRE DEPARTMENT CONNECTION
—○—	IRRIGATION CONTROL BOX
—○—	WATER METER
—○—	FLAG POLE
—○—	POWER POLE
—○—	LIGHT STANDARD
—○—	GROUND LIGHT
—○—	BOLLARD
—○—	STADIUM LIGHT
—○—	GAS VALVE
—○—	GA
—○—	ES
—○—	HS
—○—	PPS
—○—	HCS
—○—	HMC
—○—	NMV
—○—	PHC
—○—	SGP
—○—	FOS
—○—	ET2
—○—	352,30
—○—	420,17
—○—	230
—○—	12" O
—○—	12" MAG
—○—	12" CM
—○—	12" CD
—○—	12" P
—○—	12" H
—○—	12" SB
—○—	5" M
—○—	8" TRIP O
—○—	CM CLRTR
—○—	GAS METER
—○—	ELECTRICAL BOX
—○—	POWER METER
—○—	POWER TRANSFORMER
—○—	AIR CONDITIONING UNIT
—○—	COMMUNICATION BOX
—○—	PLANTED / LANDSCAPED AREA
—○—	GRASSED AREA
—○—	EXIT SIGN
—○—	HISTORICAL SIGN
—○—	PRIVATE PARKING SIGN
—○—	HANDICAP SIGN
—○—	HISTORIC RIVERFRONT SIGN
—○—	NO MOTOR VEHICLES SIGN
—○—	PURPLE HEART CITY SIGN
—○—	SOUTH GEORGIA PARKWAY SIGN
—○—	FIBER OPTIC SIGN
—○—	ENTERING EAST TIME ZONE SIGN
—○—	SPOT ELEVATION
—○—	OPENING IN WALL
—○—	BASE FLOOD ELEVATION FROM F.J.R.M.
—○—	OAK TREE
—○—	MAGNOLIA TREE
—○—	CREPE MYRTLE
—○—	CEDAR TREE
—○—	PINE TREE
—○—	HOLLY TREE
—○—	SUGARBERRY TREE
—○—	MAPLE TREE
—○—	TRIPLE OAK TREE
—○—	CLUSTER OF CREPE MYRTLE TREES

PROPOSED LEGEND
8" THICK CONCRETE PAVING

NOTE:
SEE SHEET C1.0 FOR PROJECT NOTES.

CAUTION !!!
CONTRACTOR TO LOCATE AND PROTECT EXISTING UTILITIES.
CONTRACTOR TO NOTIFY COLUMBUS WATER WORKS BEFORE BEGINNING CONSTRUCTION.



NOTE:
CONTRACTOR MUST REFER TO PLAYING FIELD DESIGN BY POPULOUS.

44 EXISTING SPACES

BENCHMARK:
(PK MAIL)
N892740.8925
E2042830.6793
ELEV.=230.41

8" BOLLARD WITH 1/2" STRAND GALVANIZED 8" GUY WIRE

COLUMBUS CONSOLIDATED GOVERNMENT

LOT 100
COLUMBUS BOLLARD AUTHORITY
(FIELD BOOK TOTAL PAGE 198)
(PLAT BOOK 162, PAGE 197)

BENCHMARK:
(PK MAIL)
N892441.3040
E2042870.5142
ELEV.=230.52