



SLAM

bgp | barnes gibson partners  
ARCHITECTS

Gilbane

FA

COUNCIL UPDATE

**Columbus Consolidated Government**

12/05/23



# AGENDA



**CURRENT DESIGN STATUS**

**STAKEHOLDER UPDATE**

**CONSTRUCTION SEQUENCING**

**COST UPDATE**

**PROJECT SCHEDULE**

# UPDATE ON SCOPE



Courthouse Building Area:

**342,000 Gross Square Feet**

**18 Courtrooms [5 SHELL]**

**Superior Court, State Court, Juvenile Court,  
Magistrate/Muni Court, Probate Court, Clerk of Court,  
District Attorney, Public Defender, Law Library, Sheriff  
Security, Jury Assembly, Accountability**

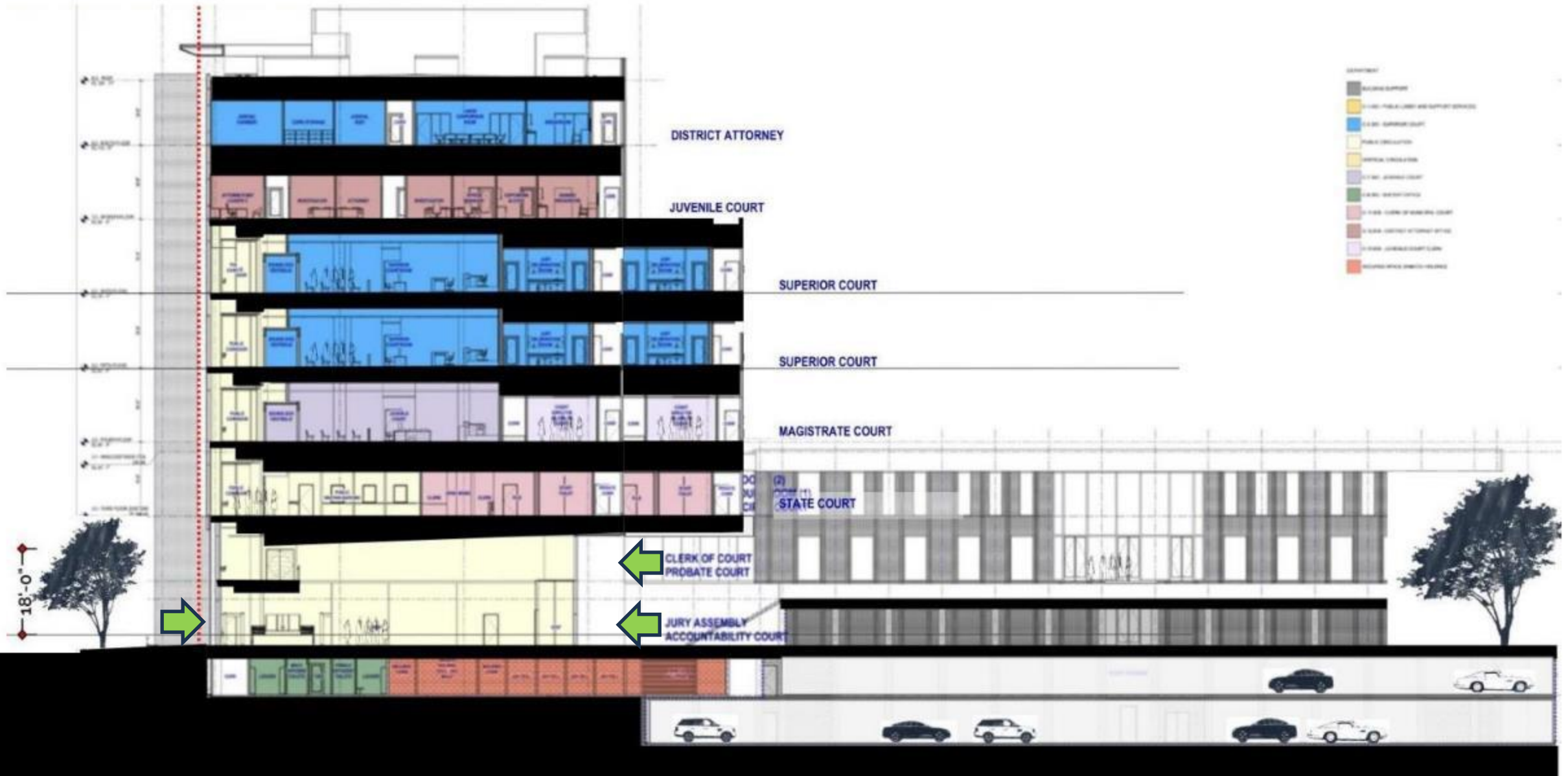
Site Parking :

**500+ Spaces**

**CITY COUNCIL AUTHORIZATION**

Note: for discussion purposes only; renderings subject to change

**NOVEMBER 7, 2023**



## EXPANSION ALTERNATE

Note: for discussion purposes only; renderings subject to change

SEPTEMBER 2023



# MODEL VIEWS



## DESIGN UPDATE

Note: for discussion purposes only; renderings subject to change



# AERIAL PLAZA VIEW



## DESIGN UPDATE

Note: for discussion purposes only; renderings subject to change



# 10<sup>TH</sup> STREET VIEW



## DESIGN UPDATE

Note: for discussion purposes only; renderings subject to change



# 10<sup>TH</sup> STREET VIEW



## DESIGN UPDATE

Note: for discussion purposes only; renderings subject to change



# ENTRY LOBBY VIEW



## DESIGN UPDATE

Note: for discussion purposes only; renderings subject to change



# PUBLIC WAITING VIEW



## DESIGN UPDATE

Note: for discussion purposes only; renderings subject to change



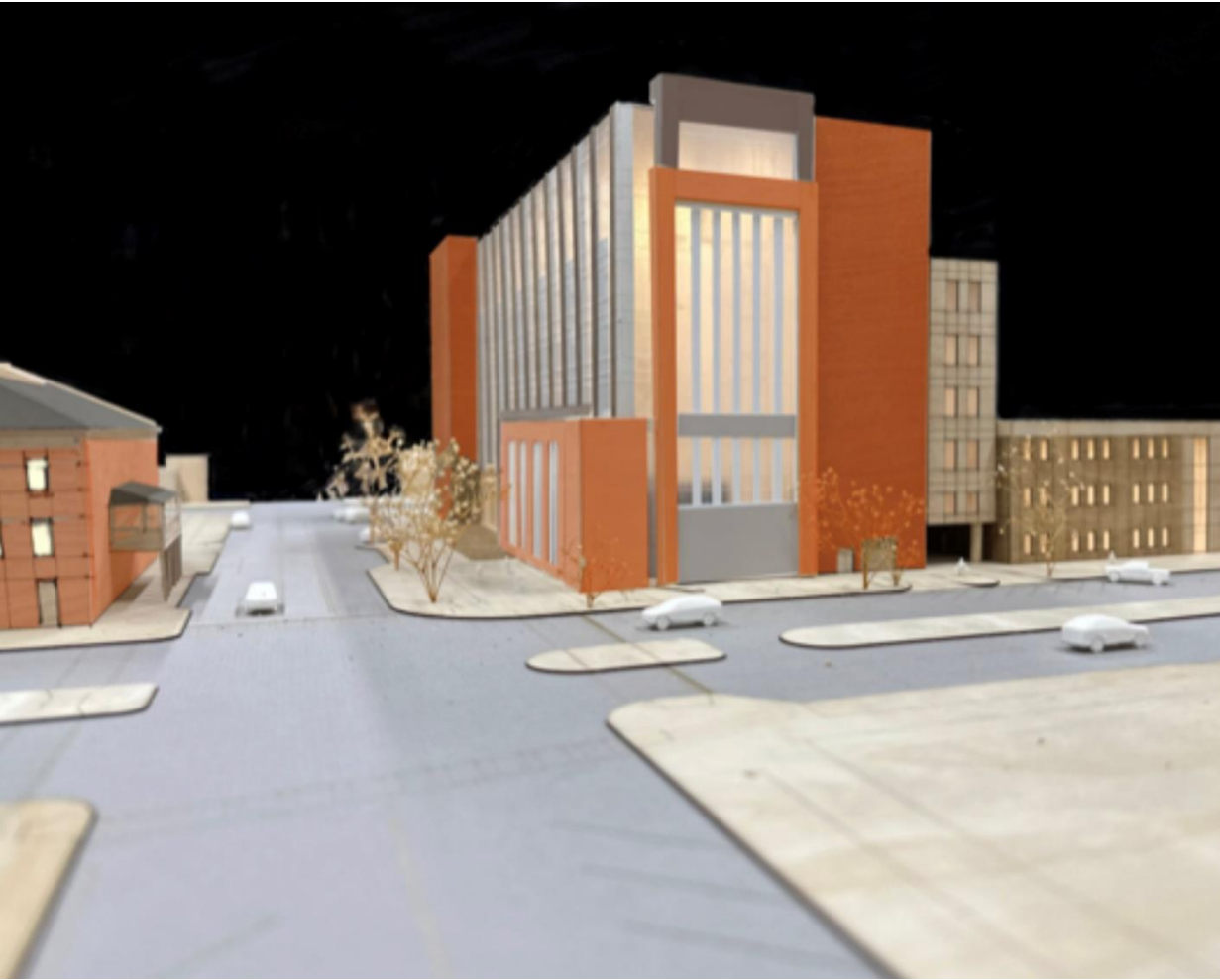
# COURTROOM VIEW



## DESIGN UPDATE

Note: for discussion purposes only; renderings subject to change





## DESIGN UPDATE

Note: for discussion purposes only; renderings subject to change





## PARKING DISTRIBUTION



## STAKEHOLDER MEETING UPDATE:

**RiverCenter for Performing Arts (host)**

**Historic Columbus Foundation**

**Springer Opera House**

**Uptown Columbus Inc.**

**Columbus State University**

**Columbus Bar Association**

**Other Concerned Citizens**





## **CONSTRUCTION ACTIVITIES**

**DEMOLITION**

**TRAFFIC**

**MONITORING**

**NOISE**

**OPERATIONS**

**COMMUNICATIONS**





TENTH STREET

FIRST AVENUE

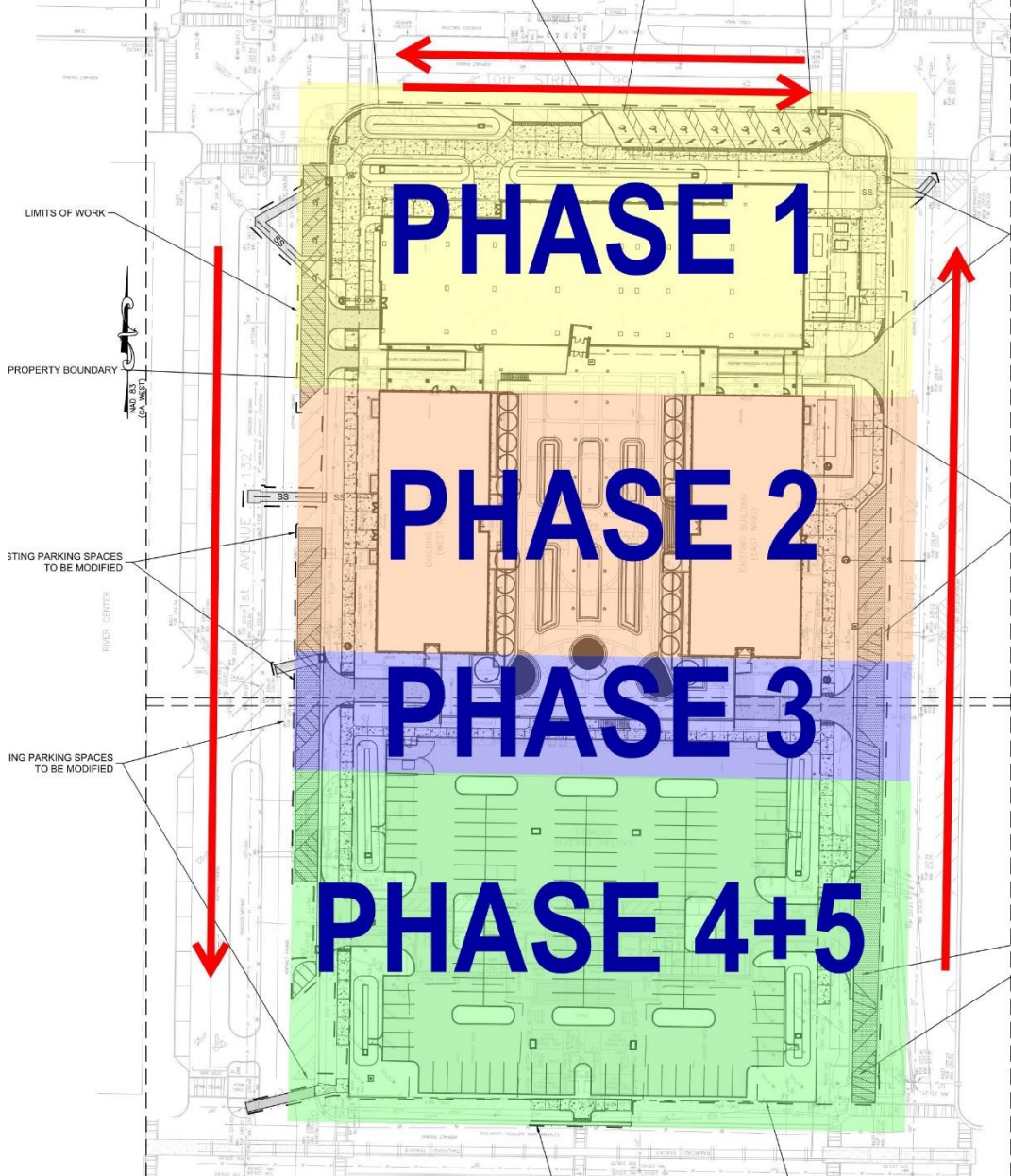
SECOND AVENUE

NINTH STREET

SITE AERIAL







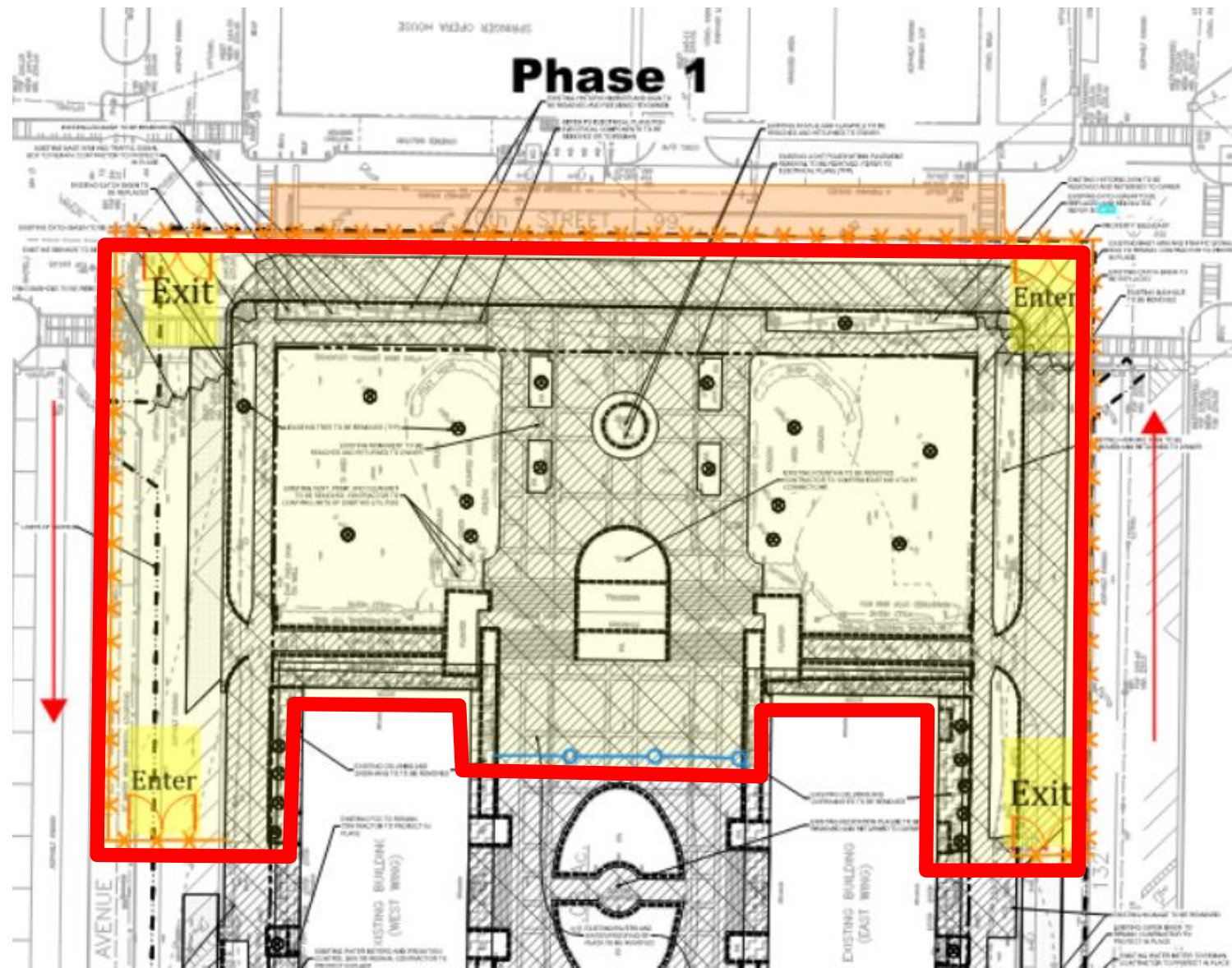
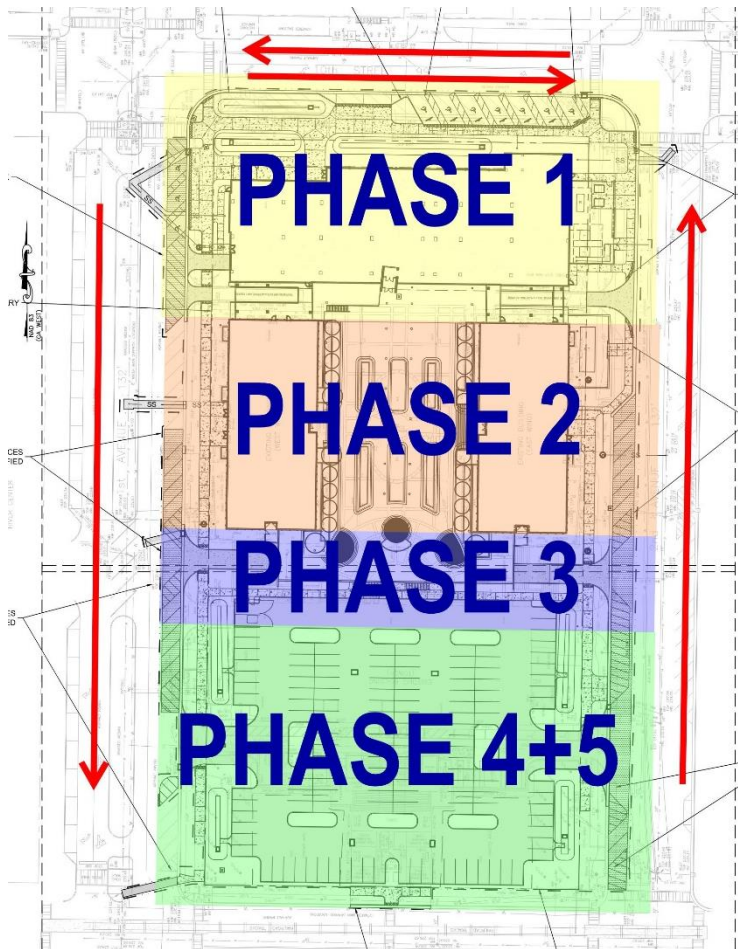
Phase 1:  
 Demo Site  
 Demo structure from 21-32  
 Lines+12' North of 32 Line  
 Add 21 Line Retaining Wall at P2  
 Excavate/ Backfill for Foundations  
 Install Caissons and Pile Caps  
 All Tulips Removed in Phase 1

Phase 2:  
 Abatement of Wings  
 Select Demolition of Wings  
 Demolition of Plaza

Phase 3:  
 Demo for New Entrance  
 Add South Retaining wall  
 Remove Plaza Deck  
 Backfill South Retaining Wall

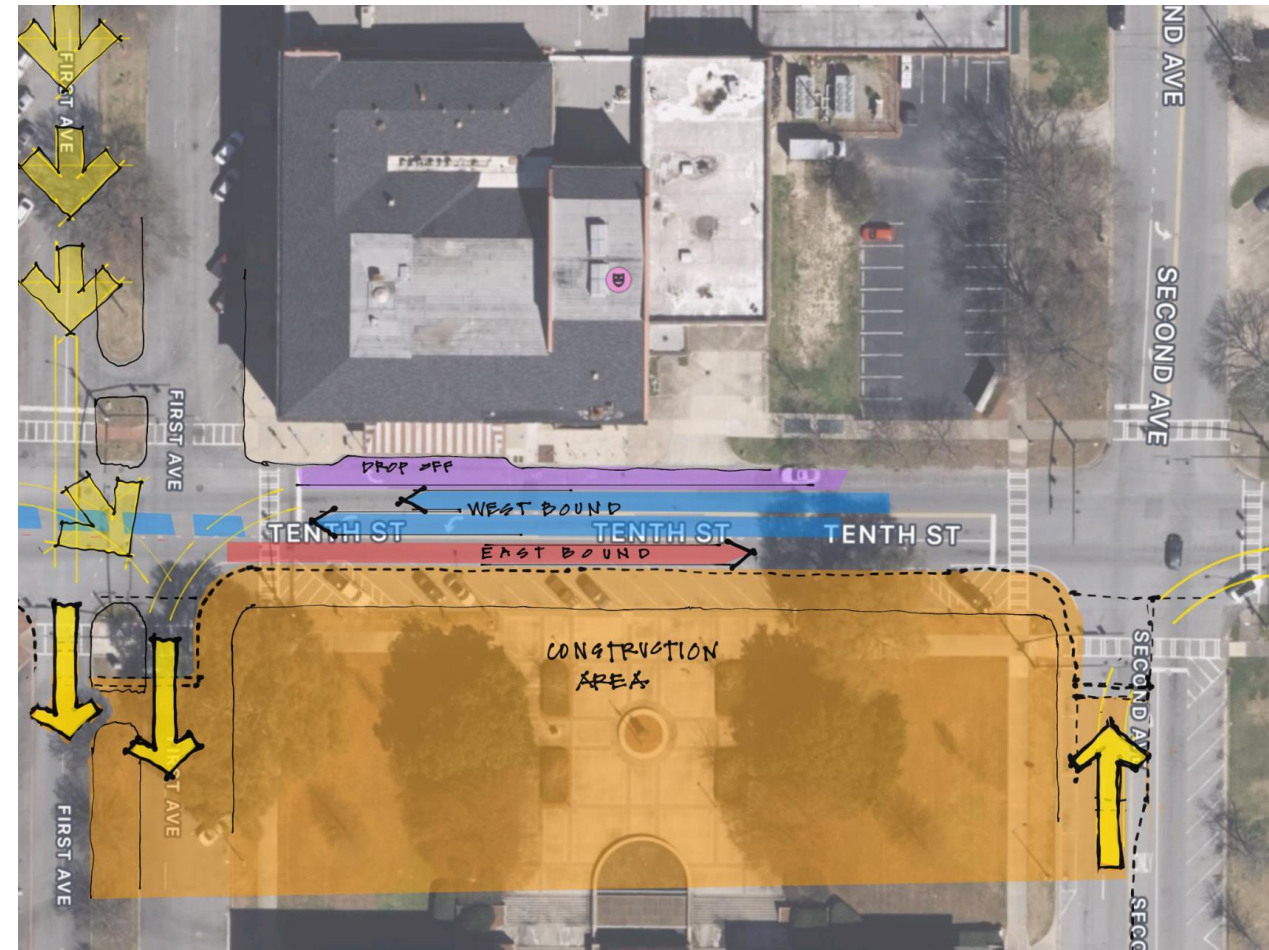
Phase 4:  
 Tower Demo  
 Phase 5:  
 Parking lot Construction





**PHASE 1 MAP**

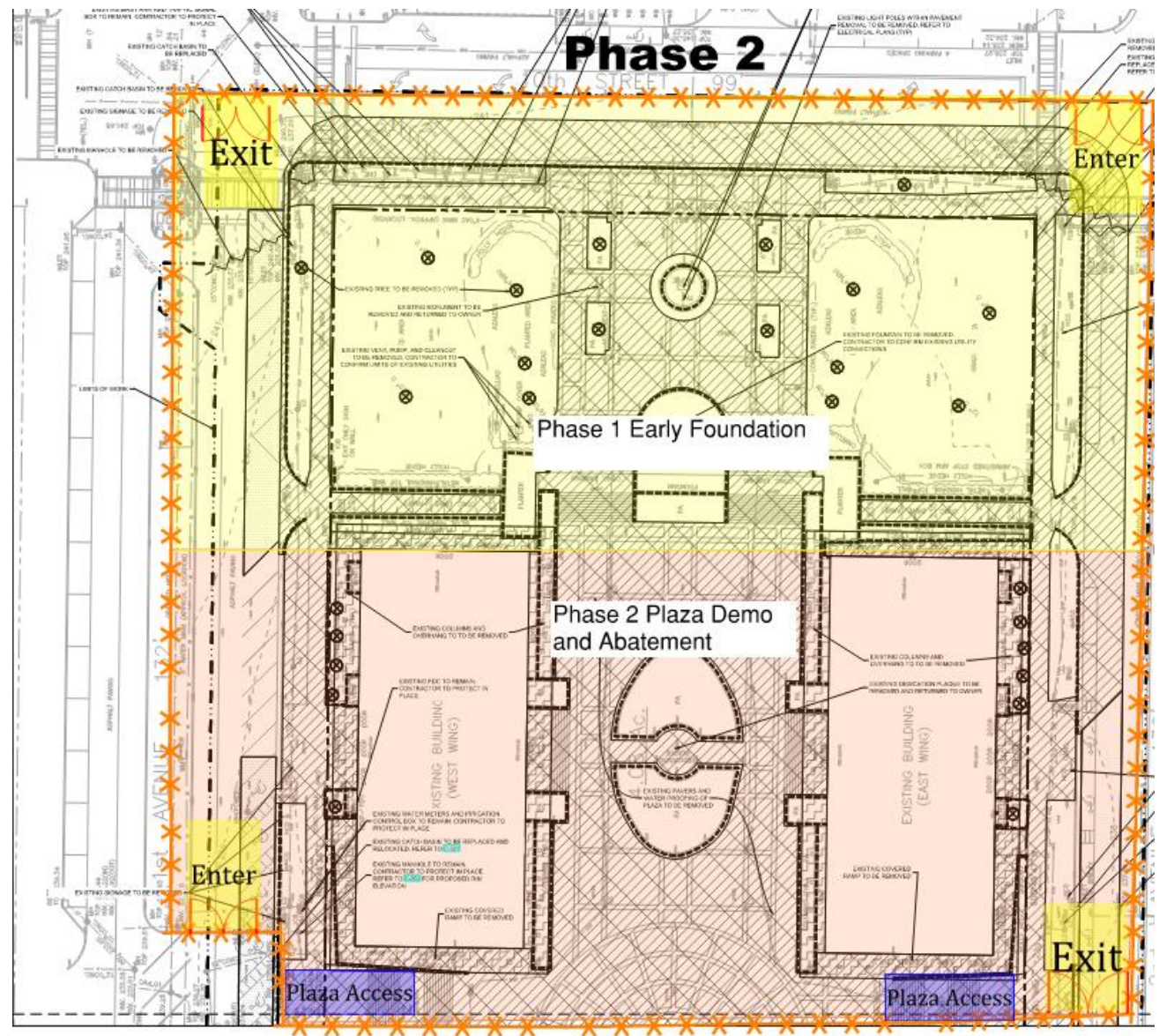
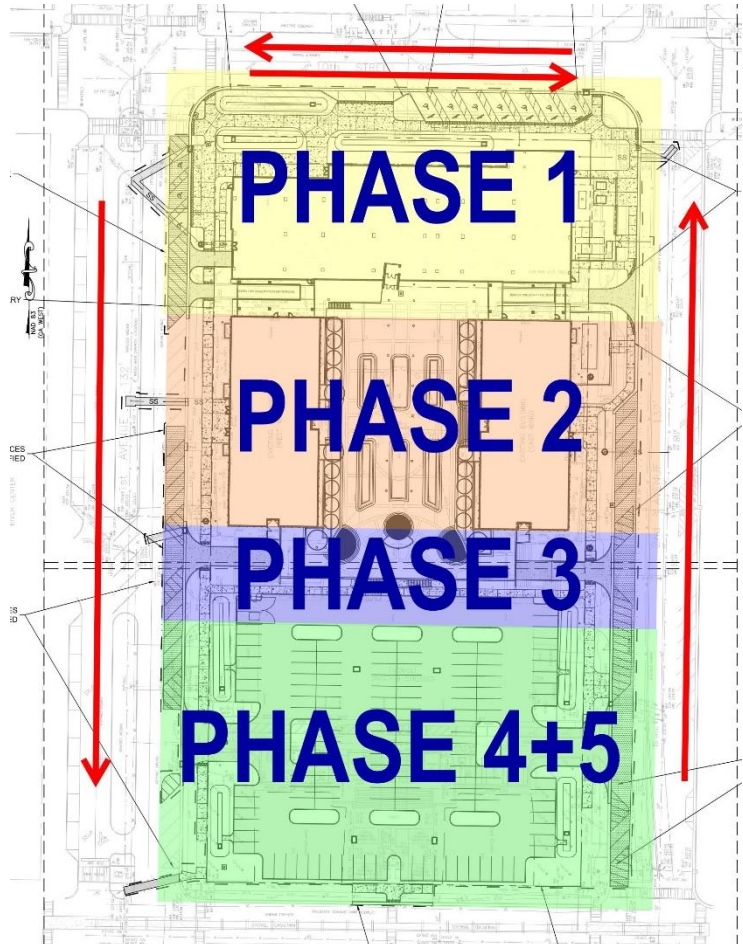




# PHASE 1 TRAFFIC MAP

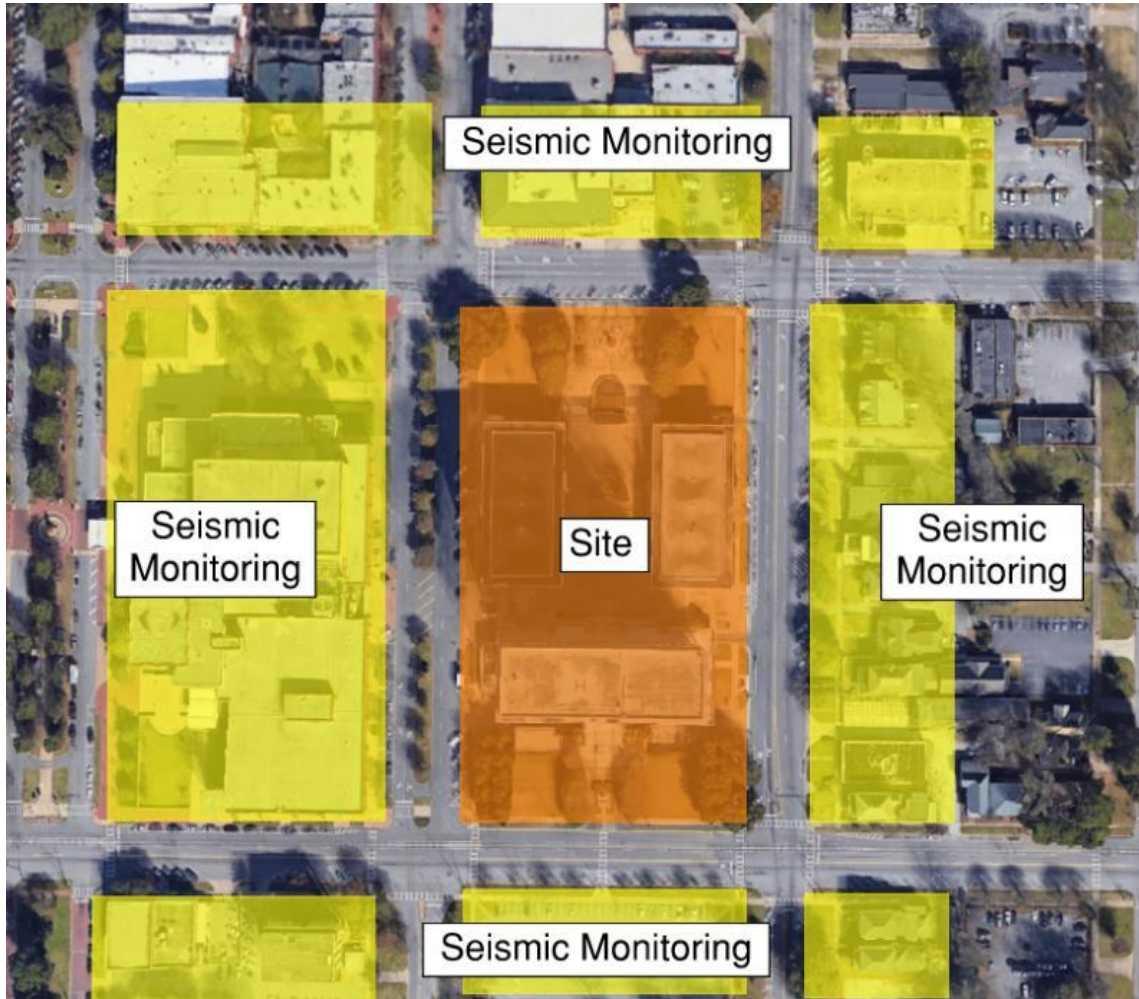






**PHASE 2 MAP**





# SEISMIC MONITORING





# CURRENT SCOPE PROPOSAL



Courthouse Building Area:

**342,000 Gross Square Feet**

**18 Courtrooms [5 SHELL], 24 JUDICIAL OFFICES**

**Superior Court, State Court, Juvenile Court.**

**Magistrate/Muni Court, Probate Court, Clerk of Court,  
District Attorney, Public Defender, Law Library, Sheriff  
Security, Jury Assembly, Accountability**

**9 ELEVATORS, 31 HOLDING CELLS**

**SITE WORK + LANDSCAPE + PARKING IMPROVEMENTS**

**DEMOLITION OF EXISTING TOWER**

Construction ESTIMATE:

**\$ 198 M \$ 6 M OVER [3%]**

CONSTRUCTION COST

**Gilbane**

**FA**



Building Construction  
12/2023 – 06/2026

Moving Process  
07/2026 – 08/2026

Abatement & Demolition  
of Tower  
9/2026 – 02/2027

Parking Lot & Hardscapes  
03/2027 – 08/2027