

# Columbus Integrated Waste



**We do amazing.**

*ACC*

ATLANTIC COAST  
CONSULTING, INC.



WILSON CAMP MSW LANDFILL  
MUSCOGEE COUNTY, GEORGIA

LEGEND

- PROPERTY LINE
- - - APPROXIMATE WASTE MANAGEMENT BOUNDARY
- ◆ GROUNDWATER MONITORING WELL
- ◆ METHANE MONITORING LOCATION
- ▼ SURFACE WATER MONITORING LOCATION



200 100 0 200 400 600  
SCALE (IN FEET)



ATLANTIC COAST  
CONSULTING, INC.  
WILSON CAMP LANDFILL  
802 13th AVENUE  
BUILDING E  
COLUMBUS, GEORGIA 31907

SITE MAP

FIGURE  
1



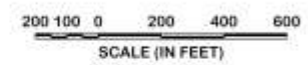




SCHATULGA ROAD SANITARY LANDFILL  
MUSCOGEE COUNTY, GEORGIA

LEGEND

- PROPERTY LINE
- ◆ GROUNDWATER MONITORING WELL
- ▼ SURFACE WATER SAMPLING LOCATION
- ★ METHANE MONITORING POINT



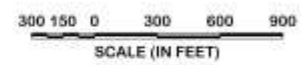
SCHATULGA ROAD SANITARY LANDFILL  
7160 SACERDOTE LANE  
COLUMBUS, GEORGIA 31907



**PINE GROVE MSW LANDFILL  
MUSCOGEE COUNTY, GEORGIA**

**LEGEND**

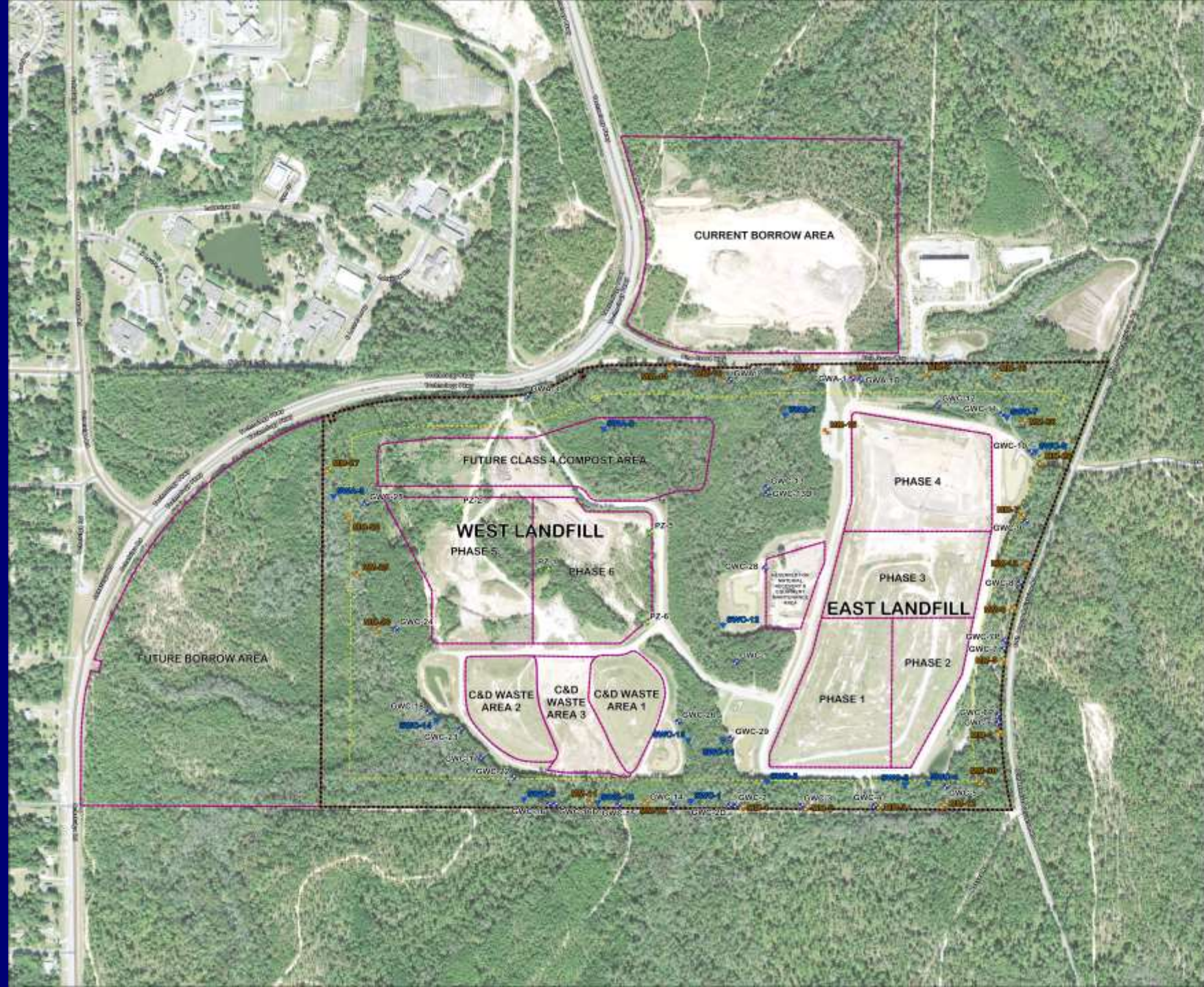
- PROPERTY BOUNDARY
- CELL BOUNDARY
- BUFFER
- ⊕ GROUNDWATER MONITORING WELL
- ⊕ PIEZOMETER
- ⊕ METHANE MONITORING WELL
- ▼ SURFACE WATER MONITORING POINT



PINE GROVE LANDFILL  
7900 PINE GROVE WAY  
COLUMBUS, GEORGIA 31907

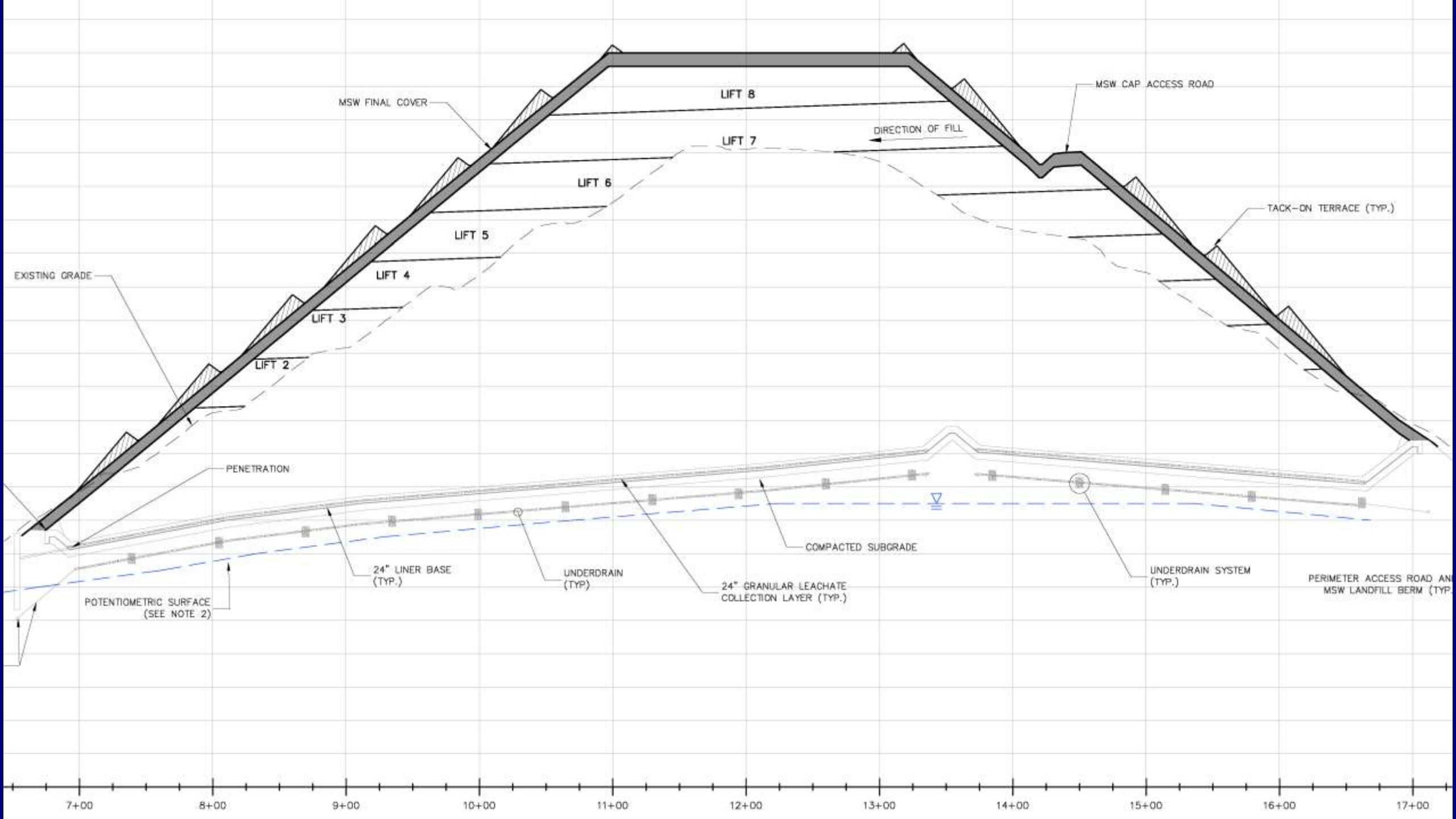
**SITE MAP**

FIGURE  
1









# 2017 C&D Major Modification Horizontal & Vertical Expansion

- Increased airspace by ~ 1M CYs
- Added ~ **\$18M** from additional C&D airspace
- Current life expectancy ~ 2052 (or 29 years)

# Current MSW Life Expectancy

- All MSW phases ~ 2049 (or 25.5 years)
- Current phases ~ 2026 (or 3.5 years)



# Pending MSW Major Modification Vertical Expansion

- Increases airspace by ~ 2.5M CYs
- Brings in ~ **\$61M** from additional MSW airspace
- Life expectancy of current phase with vertical expansion is 2038 (or 15 years)
- Life expectancy of total MSW with vertical expansion is 2067 (or 44 years)
- Class 4 compost area



# Summary

- Active solid waste permits in compliance with rules
- C&D life expectancy increased from 0 to 29 years
- MSW life expectancy will increase from 26 to 44 years
- Total value of airspace gain ~ **\$79M**
- Class 4 compost area



# THANK YOU



We do amazing.



ATLANTIC COAST  
CONSULTING, INC.