



Dragonfly Trail Network

Recreation. Transportation. Connectivity.

July 13, 2021

Dragonfly Trails Update



1. Review River Road Connection
2. Preliminary Review of Midtown Connector
3. Return on July 27th
 - Approval of River Road Connection
 - Approval of TAP Application

River Road Connection

Start: River Road & Bradley Drive Roundabout

End: Northern Terminus of the RiverWalk

River Road Trail
0.6 miles

Overall Connectivity Goals:
Connect **North Columbus** neighborhoods and amenities to the **Mill District, Uptown Columbus, Fall Line Trace Trail, and Fort Benning.**



Trail Master Plan
Recreation. Transportation. Connectivity.



Columbus Dragonfly Trails

— River Road Connection
Concept Plan



View 1 - Existing



View 1 - Existing



View 2 – Proposed 12' Wide Bridge



Midtown Connector

Start: Wynnton Road & Bradley Drive

End: Fall Line Trace

Midtown Connector
2.6 Miles

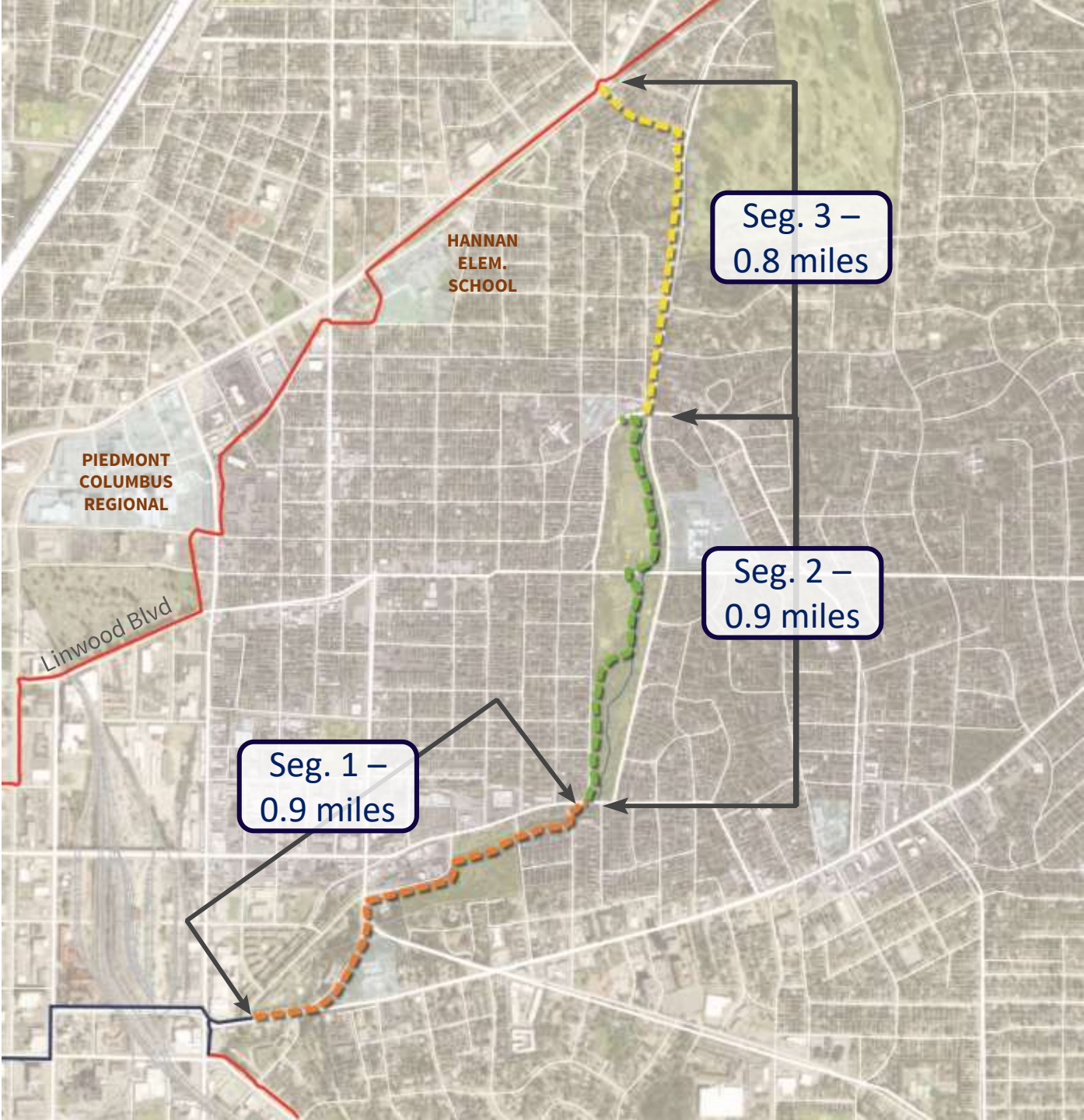
Overall Connectivity Goals:
Connect **Midtown Columbus** neighborhoods and amenities to **Uptown Columbus**, the **Chattahoochee River**, the **MLK Jr. Trail**, and the **Fall Line Trace Trail**.



Midtown Connector Segments

Legend

- Seg 1 Bradley Dr. to Dinglewood Park
- Seg 2 Lakebottom Park Connector
- Seg 3 Lakebottom Park to Fall Line Trace
- Existing Trail
- Trail under Construction
- Parks and Open Spaces
- Schools



Midtown Connector



Segment 1	Segment 2	Segment 3	Goal
<ul style="list-style-type: none">▪ 90% engineered▪ Met with Columbus Museum, Housing Authority, MCSD▪ Housing Authority contributed funding▪ Museum activating backyard▪ Partially funded	<ul style="list-style-type: none">▪ Proposed route▪ Explored 8 different options▪ Met with City, Midtown Inc., Trees Columbus, Parks & Rec, and public▪ Best option taking in all considerations; Lakebottom survey results	<ul style="list-style-type: none">▪ Preliminary, conceptual route▪ Applying for TAP funding	<ul style="list-style-type: none">▪ Connect Lakebottom to the RiverWalk and Fall Line Trace▪ Connect Midtown neighborhoods and amenities to trails▪ Improve transportation options

Segment 1

Bradley Dr. to Dinglewood Park



Existing gravel path stays

Improve intersection for trail crossing

10' greenway trail south of creek

10' sidepath along Warren Williams Rd. with new curb and landscape buffer

10' sidepath along Bradley Dr.

RiverWalk to MLK Trail Under Construction

13th St

13th St

12th St

Warren Williams Rd

DINGLEWOOD PARK

COLUMBUS HOUSING AUTHORITY

COLUMBUS MUSEUM

Buena Vista Rd

Wynnton Rd

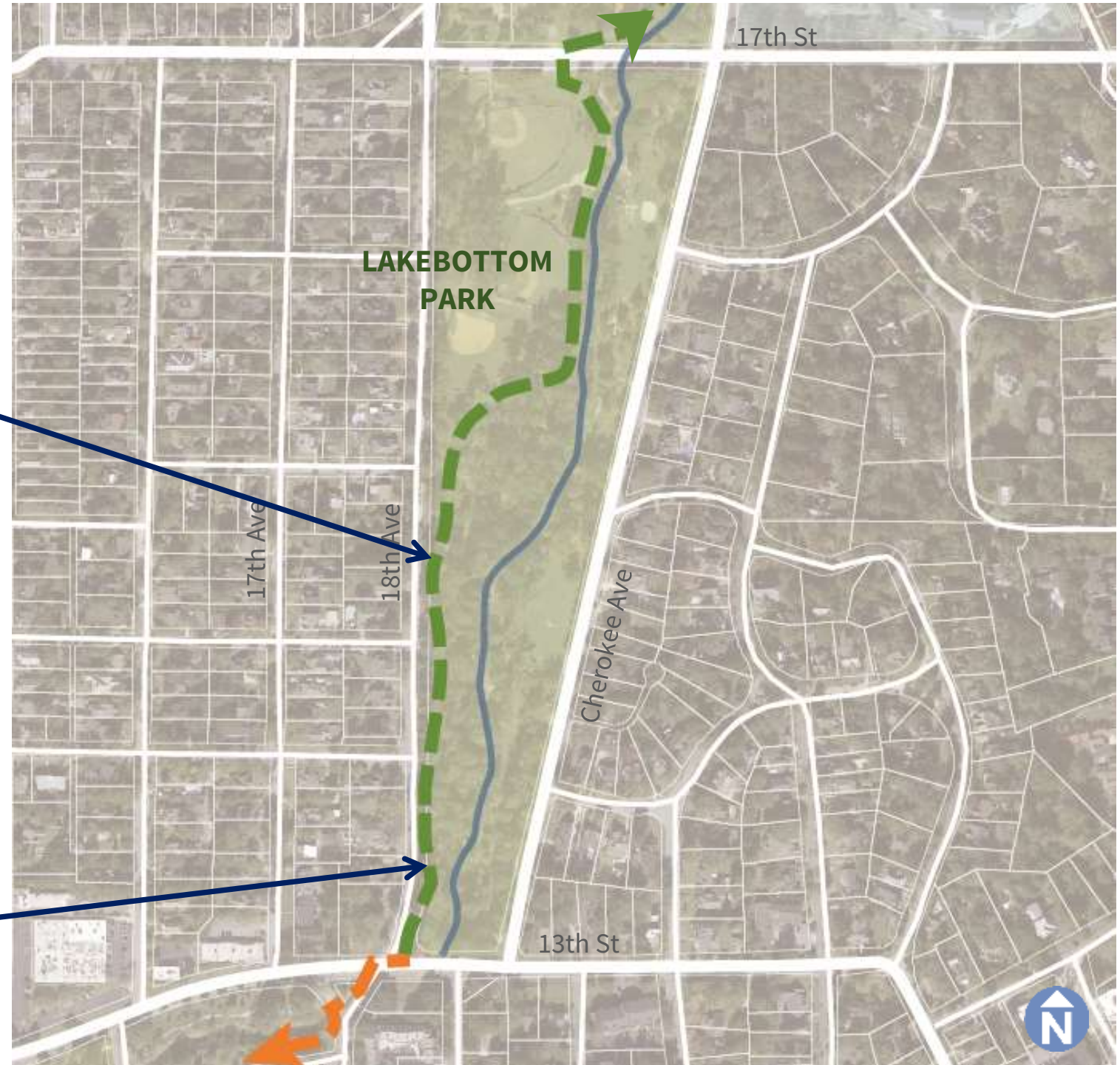
Bradley Dr



Segment 2 Lakebottom Park Connector (South)

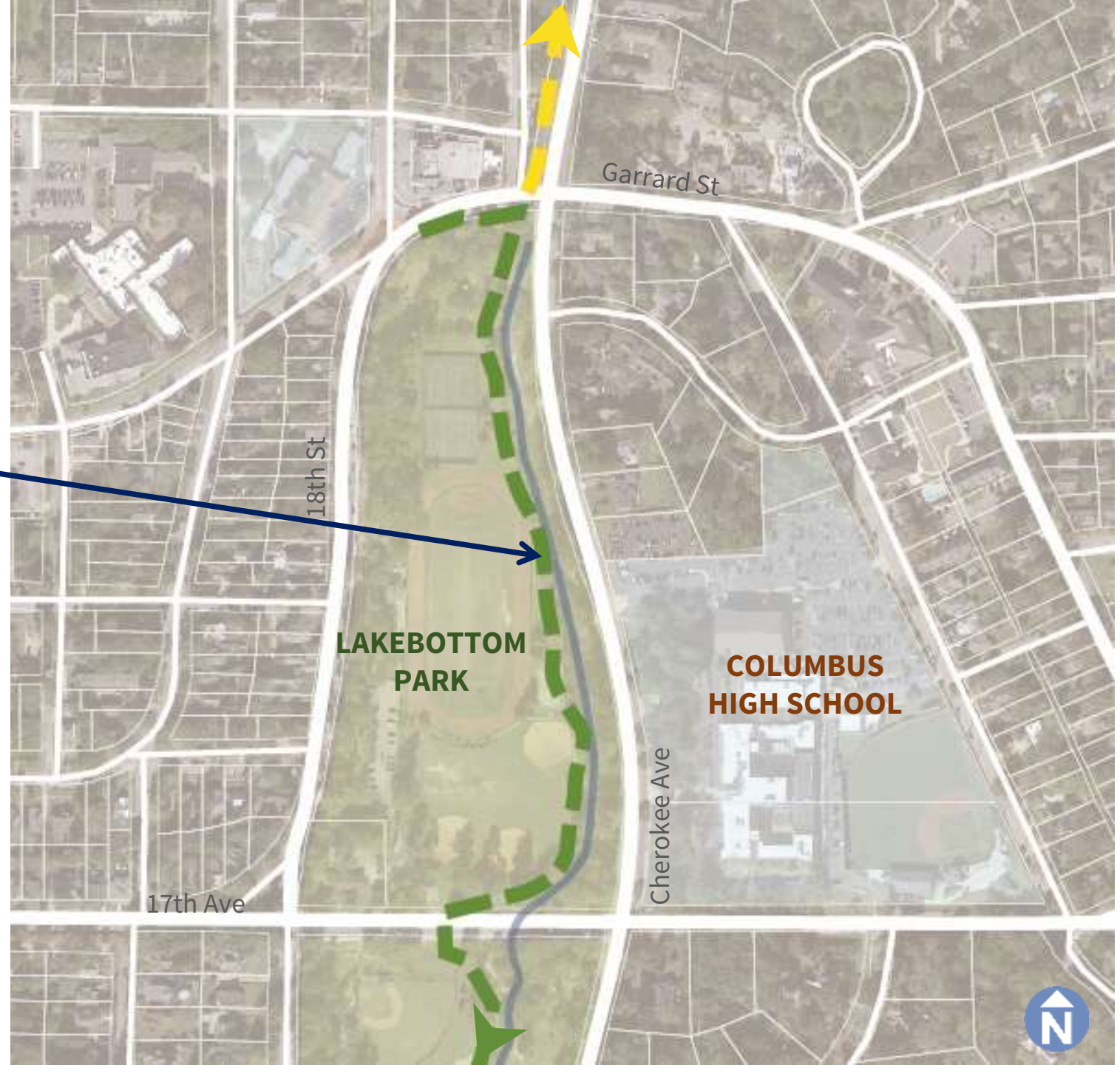
- 10' greenway inside park
- Trail hugs existing gravel trail
- Minimal impact on green space, tucked in behind assets
- Provides trail for cyclists without affecting current users

- Remove 300' of M-10 gravel
- Replace with 12' shared-use greenway



Segment 2 Lakebottom Park Connector (South)

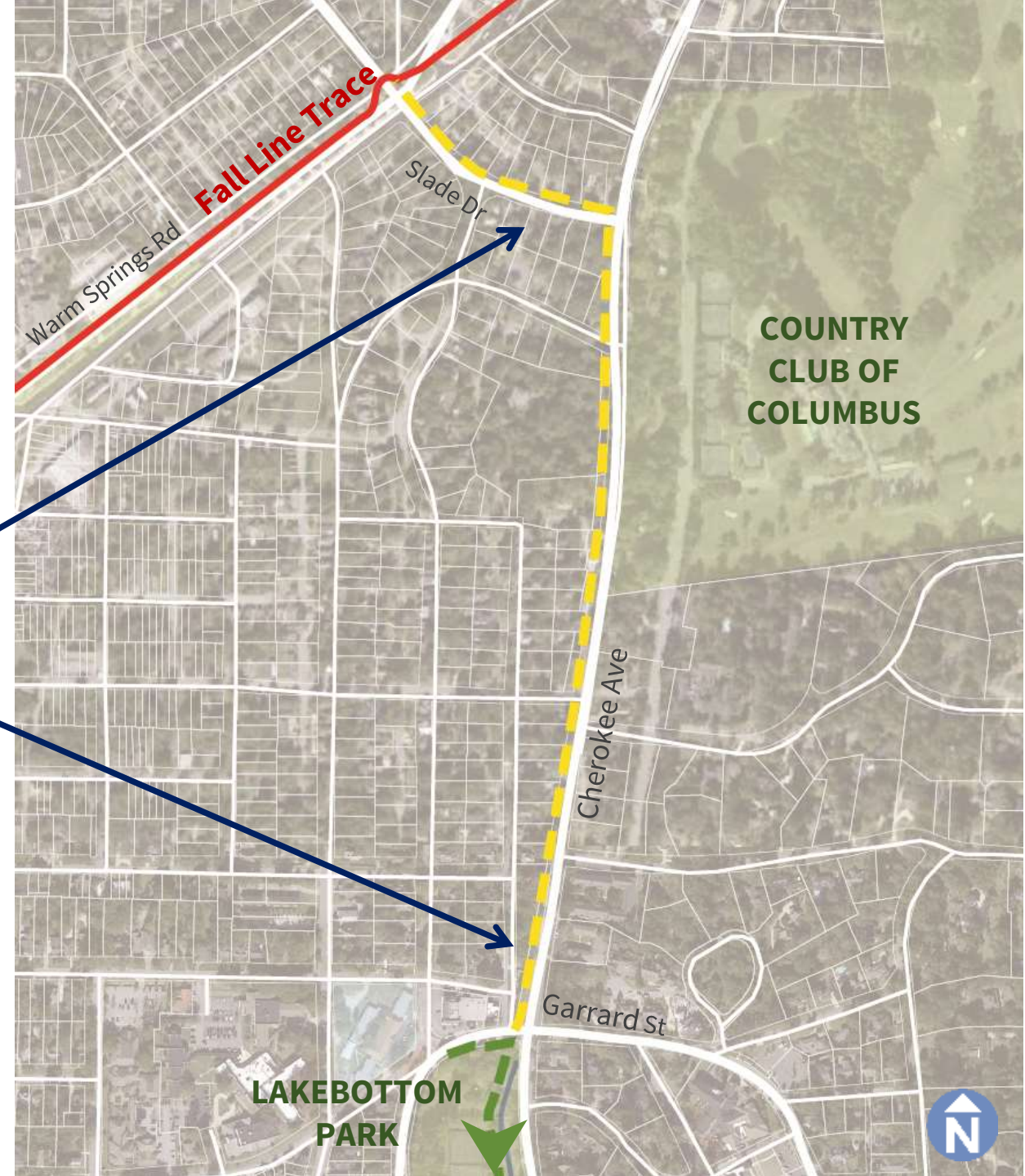
- 10' greenway inside park
- West side of Weracoba Creek
- Winds behind basketball courts, track, and tennis courts
- Least impact on tree canopy
- Doesn't affect existing park amenities
- Protects trail users from vehicles, parking spots, and driveways



Segment 3

Cherokee Ave to Fall Line Trace

- TAP application section
- Exact routing to be determined



Next Steps



City Council

- City Council to consider River Road connection and application for TAP funds

Lakebottom Survey

- Survey closes July 13th
- Review results
- Align with Trees Columbus and Parks & Rec

Stakeholder Meetings

- Midtown Columbus, Inc. Board
- Midtown Neighborhood Associations
- Local businesses and property owners

Public Meetings

- Host multiple public meetings in Lakebottom to gather feedback



Questions?