

Recycling Infrastructure Grant Application

SERDC
Southeast Recycling Development Council

THE
Coca-Cola
FOUNDATION

Grant Requirements:

1. Funding is available only to local governments and non-profit organizations within the 11-state (Alabama, Arkansas, Florida, Georgia, Kentucky, Louisiana, Mississippi, North Carolina, South Carolina, Tennessee, and Virginia) SERDC region. Local governments include municipalities, counties, waste districts, waste and utility authorities, local government cooperatives and other local government organizations that are charged with collection of residential recyclables.
2. Funding will pay up to 12.5%, or a 1:7 match for physical infrastructure additions, including new recycling program carts, recycling collection or processing equipment, etc.
3. Funding will additionally pay up to \$1.00 per household for targeted recycling outreach materials, such as postcards, magnets, cart stickers or residential recycling software/apps. Grant funds used for recycling education materials do not have a matching funds requirement.
4. Funding is to be used directly to launch or expand curbside recycling programs. Please contact for prior approval if proposed addition or expansion is not curbside-related.
5. Funding is limited to programs targeting household recyclable materials, such as paper and containers.
6. Information about the recycling program must be communicated to the residents before the deployment of the funded equipment by:
 - (1) sending a direct mailer to each customer explaining the start dates of the recycling program and what materials are accepted for recycling
 - (2) updating the locality's webpage to include accurate and easy-to-understand information about the recycling program.
 - (3) Additional outreach measures such as use of social media, new media, flyers at community centers, and production of other promotional materials is also encouraged.
 - (4) The campaign must be reviewed by SERDC (the grantor) prior to implementation.

Free tools and services from SERDC (www.serdc.org) and partners including The Recycling Partnership (www.recyclingpartnership.org) are available for program implementation, monitoring and outreach support.

Recipients must:

1. Commit to adopting best management practices and an outreach plan that increase participation and reduce contamination. This must include clear information about the program made accessible to residents, most done through the community website. Other BMP's can include cart tagging/monitoring programs, informational exhibits, social media use, newspaper ads and direct mailers.
2. Commit to measuring the recycling program results.
3. Create and maintain monthly a Municipal Measurement Program, MMP, (www.municipalmeasurement.com) account for at least two years, which measures program performance, benchmarks results, and recommends tools & resources to improve your program.
4. Share that MMP data with SERDC.



5. Imbed Radio frequency identification tags (RFID) on any new carts purchased through the grant program,
6. Demonstrate commitment for ongoing recycling support.
7. Complete the funded project within 18 months of the date of the grant agreement execution,
8. Prepare a final report upon project completion, and
9. Include grant funding acknowledgement via logos or text on grant-funded outreach materials.

Applicant Information

Community Name	Columbus, Georgia	Street Address Including City, State, and ZIP Code	602 11th Ave. Columbus, Ga. 31901
Telephone	7063265347		
Office Email Address	mdolan@columbusga.org	Web Site	https://www.columbusga.gov/publicworks/Integrated-Waste/About

Project Director	Matthew Dolan	
Highest Ranking Official(s)	Drale Short	Drale Short
Recycling Material Processor Name and Contact	Columbus Consolidated Government Matthew Dolan	
Hauler Name and Contact	Columbus Consolidated Government Matthew Dolan	

Recycling Program History

Recycling in Columbus started as a pilot program in late 1992. Originally, the pilot program consisted of four areas with one thousand homes in each area. The purpose of the pilot program was to gather information to determine what method of recycling would be most effective and efficient in Columbus. In other words, what collection method to use, what materials to recycle, what would the collection days be for different areas and what type of container to use for collection. The collection methods tested were, blue bags with the recyclables separated by the homeowner, three small plastic containers for the homeowner to separate the recyclables and the larger 18-gallon container for the homeowner to commingle the recyclables to be separated by collection personnel at the curb. The system that got the best participation rate was the larger 18-gallon container. The pilot program was originally going to last one year and then a decision would be made on how to do it or should we do it at all. In 1993 before the scheduled end of the program, we added thirteen new subdivisions. Citizen initiative and recycling interest caused this. The system that was decided on was an 18-gallon plastic container for each household to commingle their recycling items in, which would be separated at the curb by collection personnel during collection. The collection days would be the same as one of the household's garbage days since in the pilot program the participation level was better in areas where we did that. It was also decided to contract out the operations of the material recovery facility (MRF). Goodwill Industries was awarded the initial contract which lasted until 2013. This decision was made in consideration of city cost for the set up and operation of a MRF station. In the beginning the city did not get much of a percentage of the profits from Goodwill. This is because there just was not much profit to share in the beginning. In the beginning we split the profit 50/50 with Goodwill Industries. Goodwill Industries is responsible for the sale and marketing of all recyclables taken to them from the Columbus Consolidated Government, Recycling Division. Recyclables Collected: In the beginning of recycling in Columbus, we initially collected newspaper, aluminum/metal cans and glass (food and drink containers). We have since added #1 (PET) plastics, #2 (HDPE) plastics, magazines, phone books, used auto fluids (oil, transmission fluid and anti-freeze), Ink cartridges, toner cartridges, rechargeable batteries, and old cell phones. In 2013 the city partnered with Pratt Industries to market their single stream recycling that same year the city also opened a new MRF which is operated by city employees and state inmates today. We currently collect plastics 1-7, fiber, aluminum, and steel. Pratt markets the material for us and pays us 90% of the market value, \$1 dollar host fee, \$5 drop/transload fee, \$30 a ton for source separated, and \$40 a ton for single stream they procure. The material currently has roughly a thirty percent contamination rate but with some upgrades to the sorting system it would drastically be reduced. Currently the city is at thirty percent participation with a goal to reach fifty percent by 2023.



Current Recycling Program Description (include materials collected, method, containers in use and frequency)

Columbus’s Public Works Department currently operates a regional recycling facility that is the centerpiece of Columbus’s recycling programs. The facility opened in 2013 is a 54,000 square foot, LEED certified building that houses our processing facility. Along with the processing equipment and area the center also houses an education center that is used for tours and field trips. The center is owned by the city and is staffed by both Public Works employees and state prison inmates. Pratt Industries Inc. installed and maintains the sorting equipment which they currently own. Pratt markets all the recyclables coming out of the facility and uses most of the fiber for their mills and markets everything else for Columbus. The Recycling Center currently accepts single stream and source separated material including plastic (#1-#7), mixed paper, cardboard, aluminum, and steel cans. These materials are collected from residents and businesses in Columbus and throughout the region including from the cities of Auburn, Auburn University and Opelika, Alabama as well as Lagrange and Fort Benning, GA. Columbus Department of Public Works offers weekly curbside collection of recyclables which is collected on the same day as their solid waste. Columbus collects and recycles all materials that the center accepts curbside to include mixed paper, cardboard, plastics (#1-#7), aluminum, and steel cans. A total of 4775 tons of recyclables were collected curbside in FY22. Columbus operates four mobile recycling sites that accepts the same items as collected curbside. These recycling containers are located at the following locations Georgia Welcome Center 1751 Williams Road, Cooper Creek Park 4816 Milgen Road, Recycling Center 9001 Pine Grove Way, Victory Drive Site #25 22nd Ave. A total of 419 tons of recyclables were collected at these drop off recycling sites in FY22.

Households Served (Indicate tons or pounds)	17,000	Participation Rate	30%
Annual Material Weight Collected	5,500.00	Contamination Rate (can be estimated)	30%
Landfill Disposal Fee	\$42.50	Landfill Distance	Adjacent Property

Outreach Program (include both past and current efforts if applicable)

In the past the outreach program was run in conjunction with Keep Columbus Beautiful. Handouts and information packets were given to citizens with collection and proper recycling information. These packets were given out at community events, when a cart was delivered, and when citizens visited the recycling center. KCB sponsored informational events at schools, fieldtrips, and community events that promoted recycling. An application Recollect was brought on board in the last ten years that has recycling campaigns and a waste wizard for citizens who may not know what to do with certain types of waste. In the last five years we have employed a sticker for the tops of our recycling carts that has pictures of what we want in our single stream and what we do not want. We have also started using oops tags where we identify contamination at the curb along with warning stickers. We have recently put up a billboard labeled Go Bagless Columbus to encourage citizens to stop bagging their single stream. We have also been attending events where we are passing out information packets. Integrated Waste also has a Facebook page where we post informational items on proper recycling and contamination reduction. The city also has a website with a resource tab and a recycling tab where citizens can get information on proper recycling. Along with this website the city has partnered with pratt and Tom Mills to develop short informational clips on how to properly recycle. We are also in the midst of developing our own commercial that will talk about contamination and what waste goes in which cart.



Proposed Project Description (include the implications of proposed changes)

Columbus Consolidated Government currently collects roughly fifty-five hundred tons of single stream curbside recycling per year with thirty percent participation. We are requesting assistance in funding for two truckloads of recycling carts which amounts to 1,728 64-gallon carts. Our goal is to reach fifty percent participation by 2025 to increase diversion from our landfill. Currently due to budget constraints and the recent containerization of household garbage the Department of Public Works often finds itself struggling to fulfill the large amount of cart request placed by our citizens. These carts if awarded will increase public participation and reduce the amount of waste entering our landfill for years to come.

We are also asking for outreach funds for the reimbursement of our application Recollect which has the waste wizard option. We are also asking for outreach funding to pay for advertising campaigns that would encourage citizens to stop bagging their single stream along with not placing bags in their carts. We believe bags and the bagging of material is the main contributor of our residual waste that is sent to our landfill.

Total Project Cost	\$117,523.00	Total Households Impacted	1728
SERDC Funds Requested (max 12.5% of total project)	\$7,801.84	Outreach Funds (max \$1 per household)	\$20,000.00

List Other Funding Sources and Amounts

Columbus Consolidated Government/TRP Grant

Proposed Timeline

from time grant is awarded we anticipate six months

Signature

Matthew Dolan

Digitally signed by Matthew Dolan
Date: 2022.10.07 10:04:14 -04'00'

Signature of the Person Submitting this Form

Name

Matthew Dolan

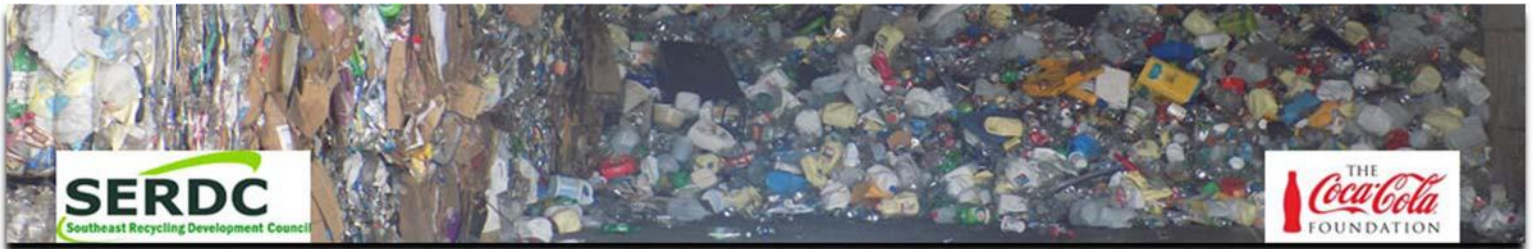
Name of the Person Submitting this Form (print)

Date of Signature

10/07/2022

MM DD YY

- Applications must be submitted to:



Mr. Will Sagar, Executive Director,
Southeast Recycling Development Council,
638 Spartanburg Hwy. Suite 70, #152
Hendersonville, NC 28792

or by email to will.sagar@serdc.org.

- Applicants will be notified of the results of the review process and award status within 90 days of receipt.
- Applicants are encouraged to seek additional funding sources and other grants for the project funding.
- Grant funds will be distributed as follows:
 - Seventy-five percent of the grant award may be distributed to reimburse for approved program expenditures per the grant's percentage share of the project costs.
 - The final twenty-five percent of the award will be distributed upon completion of the final report.
- Final report will include metrics indicating change in number of households served, participation, material collected, contamination amount and other relevant information.