



# Linwood Park & Ride Project



**Legend:**  
1.) Park & Ride Location  
2.) METRA Campus  
3.) Dragonfly Trail

# Property Overview

- Property located next to METRA campus and across from the Dragonfly Trail.
- Property was being unused with blighted, structurally unsafe building.
- Building demolished by City and property cleared in April 2022.





# Linwood Park & Ride Concept

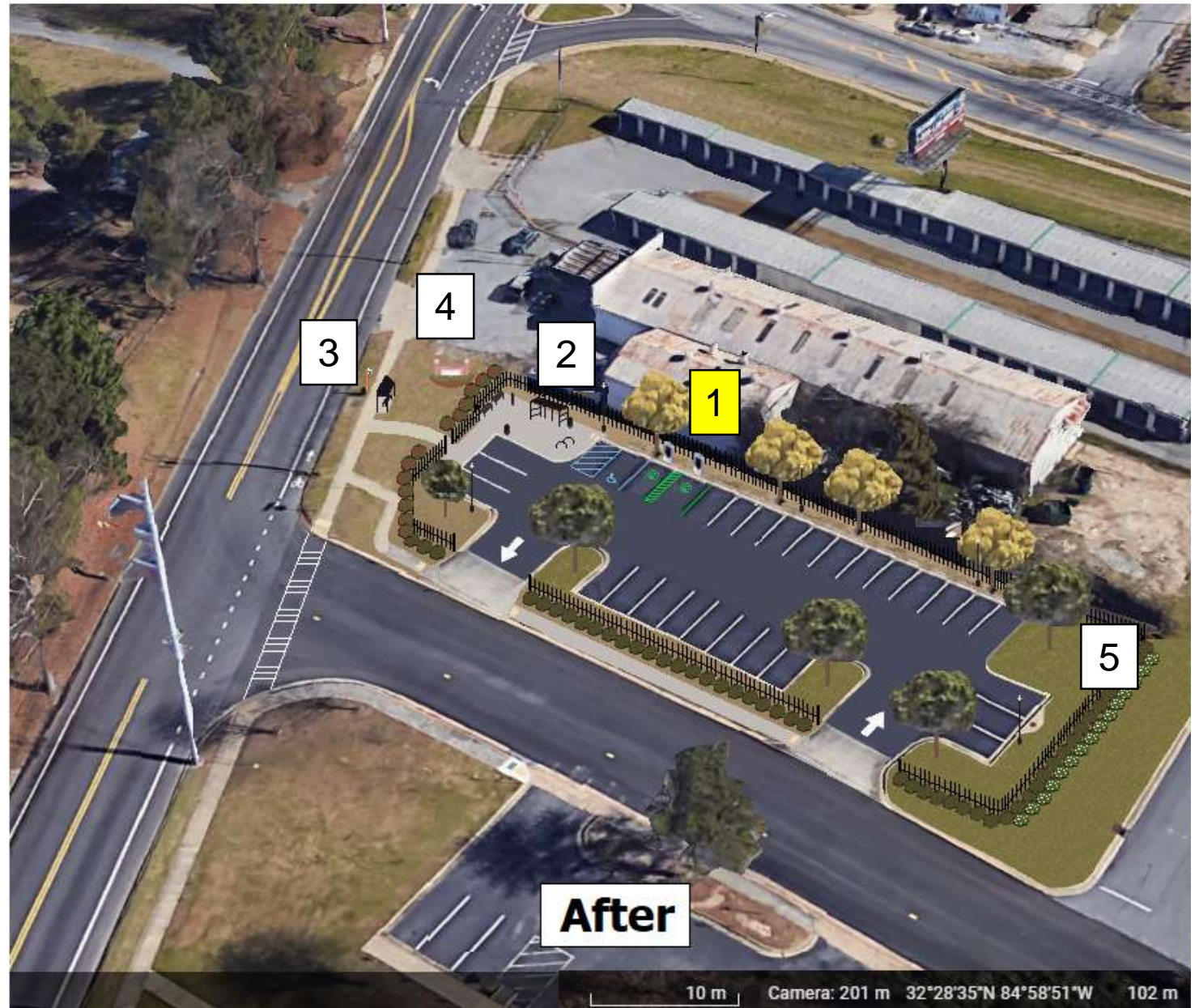
---





# Planned Amenities & Features

1. Two Electric Vehicle Charging Stations.
2. Bicycle Amenities, including bike shelter & Repair Station
3. Direct access to a METRA bus stop & to the Dragonfly Trail.
4. Decorative monument sign, fencing, and lighting.
5. Plenty of greenspace with trees and flowering bushes.



# Anticipated Benefits & Project Funding

- Attract new ridership. Due to COVID-19, METRA experienced a **50% decline** in ridership.
- Contribute to the City's sustainability initiative and make our community more EV friendly.
- Offer conveniently located amenities for our City's biking community.
- Funded by METRA's 2012 TSPLOST.