

# **Preliminary Assessments for 2026 West School Street Reconstruction**

**Columbus, Wisconsin**

**March 2, 2026**

**Prepared for:**

**City of Columbus  
Columbia County, Wisconsin**

## **Contents**

In accordance with Preliminary Resolution No. 12-25 of The Common Council of the City of Columbus, dated October 21, 2025, this report presents the preliminary construction quantities and estimated costs associated with the 2026 West School Street Reconstruction in accordance with the approved plans and specifications and a schedule of the proposed assessments.

The assessable work includes:

- Full cost of 30-Inch curb and gutter, regardless of style or type (not including intersections).
- 50% cost of drop off lane construction (18-Inch curb and gutter, Asphalt, and Crushed Aggregate Base Course)
- Full cost for concrete driveway aprons.
- Full cost for sidewalk through driveways (6" thick).
- 50% of the cost for new sidewalk in terrace areas (not including intersections).
- 15% of the cost of storm sewer within the right-of-way, with 85% of the cost to the City and 15% of the cost to the property owner.

## **List of Appendices**

Appendix A: City of Columbus Resolution No. 12-25

Appendix B: Preliminary Construction Prices (Low Bid)

Appendix C: Preliminary Total Assessment

Appendix D: Parcel Location Map

Appendix E: Storm Sewer System Map

## **Appendix A**

**City of Columbus Preliminary Resolution No. 12-25**

## **RESOLUTION NO. 12-25**

### **PRELIMINARY RESOLUTION DECLARING INTENT TO LEVY SPECIAL ASSESSMENTS UNDER MUNICIPAL POLICE POWERS PURSUANT TO SECTION 66.0703, STATS.**

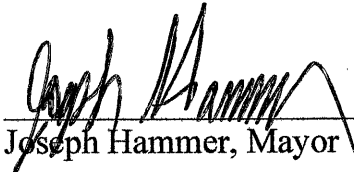
The City of Columbus, Columbia County, Wisconsin, by its Common Council, hereby resolves as follows:

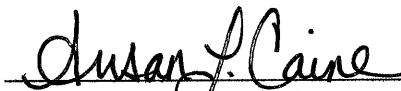
1. The City of Columbus Common Council hereby declares its intention to exercise its police power under Section 66.0703, Stats., to levy special assessments upon property in the Assessment District hereafter described, for benefits conferred upon such properties by reason of the following public work and improvements: Street replacement, utility improvements, installation of curb and gutter, driveway aprons, stormwater improvements, and restoration.
2. The Properties to be assessed are within the following described Assessment District as shown on the attached Exhibit A, all lying within the City of Columbus, Columbia County, Wisconsin:
  - a. The lots abutting both sides of West School Street between South Ludington Street and Hibbard Street.
3. The total amount assessed against the properties in the described Assessment District shall not exceed 100% of the administrative expenses and total costs of the improvements.
4. The Common Council determines that the improvements constitute an exercise of the police power for the health, safety and general welfare of the municipality and its inhabitants.
5. The Municipal Engineer, Ruekert & Mielke Inc. shall prepare a report which shall consist of:
  - a. Preliminary Plans and specifications for the improvements; and
  - b. Schedule of proposed assessments for all properties within the Assessment District.
6. When the report is completed, the Municipal Engineer shall file a copy of the report with the Municipal Clerk for public inspection.

7. All interested persons and owners of the property affected by this special assessment shall be provided with the notice and hearing requirements as set forth in sec. 66.0703(7)(a) Stats.
8. The assessment against any parcel may be paid in cash or in annual installments, the number of which shall be determined at the public hearing on the proposed assessments.

Dated this 21<sup>st</sup> day October, 2025.

**CITY OF COLUMBUS**

By:   
Joseph Hammer, Mayor

Attest:   
Susan L. Caine, Clerk



## **Appendix B**

### **Preliminary Construction Prices (Low Bid)**

CITY OF COLUMBUS

2026 West School Street Reconstruction

3/2/2026

No	Description		Approx	Unit	Total
		Unit	Quantity	Price	Price
<b>Base Bid</b>					
1	Construct Roadway to Subgrade	LS	1.00	\$250,000.00	\$250,000.00
2	Excavation Below Subgrade (EBS) and Backfill	CY	2450.00	\$33.00	\$80,850.00
3	Geogrid Subgrade Reinforcement	SY	9860.00	\$3.00	\$29,580.00
4	Crushed Aggregate Base Course	TON	9750.00	\$15.00	\$146,250.00
5	2.25-Inch Asphaltic Concrete Binder Course	TON	1225.00	\$81.00	\$99,225.00
6	1.75-Inch Asphaltic Concrete Surface Course	TON	1225.00	\$82.00	\$100,450.00
7	18-Inch Concrete Curb and Gutter	LF	300.00	\$33.00	\$9,900.00
8	30-Inch Concrete Curb and Gutter	LF	5310.00	\$18.50	\$98,235.00
9	Concrete Sidewalk	SF	26400.00	\$7.00	\$184,800.00
10	6-Inch Concrete Driveway Apron	SF	5815.00	\$9.00	\$52,335.00
11	Full Depth Pavement Saw Cutting	LF	490.00	\$4.00	\$1,960.00
12	Pavement Marking, Cross Walk, 6-Inch White, Epoxy	LF	440.00	\$7.50	\$3,300.00
13	Pavement Marking, Stop Bar, 18-Inch White, Epoxy	LF	50.00	\$23.00	\$1,150.00
14	Pavement Marking, Parking Stall, 6-Inch White, Epoxy	LF	120.00	\$7.50	\$900.00
15	Traffic Control	LS	1.00	\$11,900.00	\$11,900.00
16	Inlet Protection	EACH	55.00	\$120.00	\$6,600.00
17	Tree Removal	ID	600.00	\$40.00	\$24,000.00
18	Street Trees	EACH	8.00	\$650.00	\$5,200.00
19	Detectable Warning Field	EA	50.00	\$375.00	\$18,750.00
20	Topsoil, Seed, Fertilize, and Erosion Mat	LS	1.00	\$40,000.00	\$40,000.00
21	8-Inch PVC Sanitary Sewer w/Granular Backfill	LF	1820.00	\$90.00	\$163,800.00
22	10-Inch PVC Sanitary Sewer w/Granular Backfill	LF	475.00	\$110.00	\$52,250.00
23	48-Inch Sanitary Sewer Manhole w/Frame and Cover	EACH	11.00	\$4,500.00	\$49,500.00
24	6" PVC Sanitary Sewer Lateral	LF	1185.00	\$80.00	\$94,800.00
25	12-Inch RCP Class V Storm Sewer w/Granular Backfill	LF	1150.00	\$70.00	\$80,500.00
26	15-Inch RCP Class IV Storm Sewer w/Granular Backfill	LF	365.00	\$75.00	\$27,375.00
27	18-Inch RCP Class IV Storm Sewer w/Granular Backfill	LF	5.00	\$150.00	\$750.00
28	19 x 30-Inch RCP Class IV Storm Sewer w/Granular Backfill	LF	385.00	\$148.00	\$56,980.00
29	24-Inch RCP Class IV Storm Sewer w/Granular Backfill	LF	25.00	\$105.00	\$2,625.00
30	48-Inch Storm Sewer Manhole w/Frame and Cover	EACH	6.00	\$4,400.00	\$26,400.00
31	60-Inch Storm Sewer Manhole w/Frame and Cover	EACH	1.00	\$4,750.00	\$4,750.00
32	2'x3' Standard Catch Basin Precast Box w/Frame and Grate	EACH	34.00	\$3,300.00	\$112,200.00
33	Remove Existing Storm Sewer	LS	1.00	\$15,000.00	\$15,000.00
34	4-Inch DIP Water Main w/Granular Backfill	LF	170.00	\$100.00	\$17,000.00
35	6-Inch DIP Water Main w/Granular Backfill	LF	110.00	\$120.00	\$13,200.00
36	8-Inch DIP Water Main w/Granular Backfill	LF	2880.00	\$130.00	\$374,400.00
37	10-Inch DIP Water Main w/ Granular Backfill	LF	85.00	\$150.00	\$12,750.00
38	8-Inch Water Main Valve	EACH	25.00	\$3,600.00	\$90,000.00
39	10-Inch Water Main Valve	EACH	2.00	\$4,200.00	\$8,400.00
40	Hydrant Assembly	EACH	6.00	\$8,000.00	\$48,000.00
41	6-Inch Hydrant Lead	LF	95.00	\$100.00	\$9,500.00
42	1-Inch Water Service - Open Trench w/Granular Backfill	LF	680.00	\$80.00	\$54,400.00
43	1-Inch Tap and Corporation Valve	EACH	35.00	\$380.00	\$13,300.00
44	1-Inch Curb Valve and Curb Box	EACH	35.00	\$380.00	\$13,300.00
45	Pipe Insulation	LF	200.00	\$5.00	\$1,000.00
46	Reconnect Existing Service to Water Main Plug	EACH	1.00	\$2,000.00	\$2,000.00
47	Reconnect Existing Service to Water Main Plug	EACH	1.00	\$2,000.00	\$2,000.00
<b>TOTAL</b>					<b>\$2,511,565.00</b>

## **Assessable Improvements for 2026 West School Street Reconstruction**

The assessable items from the project are as follows:

1. Concrete Sidewalk
2. 6-Inch Concrete Driveway Approach
3. 18-Inch Concrete Curb and Gutter
4. 30-Inch Concrete Curb and Gutter
5. Drop-off Lane (Asphalt, Crushed Aggregate Base)
6. 12-Inch RCP CL V Storm Sewer w/Granular Backfill
7. 15-Inch RCP CL IV Storm Sewer w/Granular Backfill
8. 18-Inch RCP CL IV Storm Sewer w/Granular Backfill
9. 19 x 30-Inch RCP CL IV Storm Sewer w/Granular Backfill
10. 24-Inch RCP CL IV Storm Sewer w/Granular Backfill
11. 48-Inch Storm Manhole w/Frame and Cover
12. 60-Inch Storm Manhole w/Frame and Cover
13. 2' x 3' Standard Catch Basin w/Frame and Grate

**CITY OF COLUMBUS**

**2026 West School Street Reconstruction**

3/2/2026

**EXPLANATION OF ASSESSABLE COSTS**

**1 Concrete Sidewalk**

The assessable cost is based on the area of sidewalk to be removed and installed for each parcel and does not include intersections. 100% of the cost of sidewalk through the driveway is assessed to the respective property owner. This project will be receiving sidewalk on the northeast and southwest side (both sides). As a result the sidewalk cost will be shared 50% by property owners and 50% by the City for that portion of sidewalk along the property frontage minus the sidewalk through the driveway assessed at 100%. Carriage walks that are located between public sidewalk and back of curb for individual residents will be assessed at 100% of the cost to owner.

**2 6-Inch Concrete Driveway Apron**

The assessable cost is based on the area of new concrete driveway approach for each parcel. Assessed width is based on width of driveway behind the public sidewalk with a apron matching the city standard detail. Shared driveways will take the total area and divide equally between the two parcels.

**3 30-Inch Concrete Curb and Gutter**

The assessable cost is based on the length of curb and gutter along the frontage of each parcel and does not include intersections. The quantity of 30-Inch Concrete Curb and Gutter per parcel is calculated in the attached table.

**4 Crushed Aggregate Base Course - (Drop off lane only)**

The assessable cost for this item is only within the areas of drop off by school. 50% of the quantity within the drop off areas is assessed to the adjacent property.

**5 2.25-Inch Asphaltic Concrete Binder Course - (Drop off lane only)**

The assessable cost for this item is only within the areas of vehicle drop off by the school. 50% of the quantity within the drop off areas is assessed to the adjacent property.

**6 1.75-Inch Asphaltic Concrete Surface Course - (Drop off lane only)**

The assessable cost for this item is only within the areas of vehicle drop off by the school. 50% of the quantity within the drop off areas is assessed to the adjacent property.

**7 18-Inch Concrete Curb and Gutter - (Drop off lane only)**

The assessable cost for this item is only within the areas of drop off by the school. 50% of the quantity within the drop off areas is assessed to the adjacent property.

**8 12-Inch RCP CL V Storm Sewer w/Granular Backfill**

The assessable cost for this item is based on the lot frontage of each lot which contributes and benefits to a specific storm sewer system. The cost is assessed on a percentage basis of total lot frontage for each system. Storm sewer systems and their respective contributing parcels are depicted on the attached exhibits in Appendix E. Overall system costs are listed in the attached tables.

**9 15-Inch RCP CL IV Storm Sewer w/Granular Backfill**

The assessable cost for this item is based on the lot frontage of each lot which contributes and benefits to a specific storm sewer system. The cost is assessed on a percentage basis of total lot frontage for each system. Storm sewer systems and their respective contributing parcels are depicted on the attached exhibits in Appendix E. Overall system costs are listed in the attached tables.

**10 18-Inch RCP CL IV Storm Sewer w/Granular Backfill**

The assessable cost for this item is based on the lot frontage of each lot which contributes and benefits to a specific storm sewer system. The cost is assessed on a percentage basis of total lot frontage for each system. Storm sewer systems and their respective contributing parcels are depicted on the attached exhibits in Appendix E. Overall system costs are listed in the attached tables.

**11 19 x 30-Inch RCP CL IV Storm Sewer w/Granular Backfill**

The assessable cost for this item is based on the lot frontage of each lot which contributes and benefits to a specific storm sewer system. The cost is assessed on a percentage basis of total lot frontage for each system. Storm sewer systems and their respective contributing parcels are depicted on the attached exhibits in Appendix E. Overall system costs are listed in the attached tables.

**12 24-Inch RCP CL IV Storm Sewer w/Granular Backfill**

The assessable cost for this item is based on the lot frontage of each lot which contributes and benefits to a specific storm sewer system. The cost is assessed on a percentage basis of total lot frontage for each system. Storm sewer systems and their respective contributing parcels are depicted on the attached exhibits in Appendix E. Overall system costs are listed in the attached tables.

**13 48-Inch Storm Manhole w/Frame and Cover**

The assessable cost for this item is based on the lot frontage of each lot which contributes and benefits to a specific storm sewer system. The cost is assessed on a percentage basis of total lot frontage for each system. Storm sewer systems and their respective contributing parcels are depicted on the attached exhibits in Appendix E. Overall system costs are listed in the attached tables.

**14 60-Inch Storm Manhole w/Frame and Cover**

The assessable cost for this item is based on the lot frontage of each lot which contributes and benefits to a specific storm sewer system. The cost is assessed on a percentage basis of total lot frontage for each system. Storm sewer systems and their respective contributing parcels are depicted on the attached exhibits in Appendix E. Overall system costs are listed in the attached tables.

**15 2' x 3' Standard Catch Basin w/Frame and Grate**

The assessable cost for this item is based on the lot frontage of each lot which contributes and benefits to a specific storm sewer system. The cost is assessed on a percentage basis of total lot frontage for each system. Storm sewer systems and their respective contributing parcels are depicted on the attached exhibits in Appendix E. Overall system costs are listed in the attached tables.

## **Appendix C**

### **Preliminary Total Assessment**



**CITY OF COLUMBUS**  
**2026 West School Street Reconstruction**  
3/2/2026  
**30-Inch Concrete Curb & Gutter**

Parcel No.	Lot Address	Frontage	Curb Lengths per Frontage (LF)	Unit Price	30-Inch Concrete Curb and Gutter
11211-495	344 S Charles Street	West School	300.00	\$18.50	\$ 5,550.00
11211-498.2	411 Hibbard Street	West School	50.00	\$18.50	\$ 925.00
11211-498.1	743 W School Street	West School	70.00	\$18.50	\$ 1,295.00
11211-497	731 W School Street	West School	80.00	\$18.50	\$ 1,480.00
11211-496	651 W School Street	West School	100.00	\$18.50	\$ 1,850.00
11211-436	347 Charles Street	West School	150.00	\$18.50	\$ 2,775.00
11211-437	346 S Lewis Street	West School	150.00	\$18.50	\$ 2,775.00
11211-440	649 W School Street	West School	60.00	\$18.50	\$ 1,110.00
11211-439	641 W School Street	West School	60.00	\$18.50	\$ 1,110.00
11211-438.2	629 W School Street	West School	60.00	\$18.50	\$ 1,110.00
11211-438.1	410 S Lewis Street	West School	120.00	\$18.50	\$ 2,220.00
11211-261	552 W School Street	West School	60.00	\$18.50	\$ 1,110.00
11211-260	544 W School Street	West School	65.00	\$18.50	\$ 1,202.50
11211-259	524 W School Street	West School	65.00	\$18.50	\$ 1,202.50
11211-258	352 S Birdsey Street	West School	110.00	\$18.50	\$ 2,035.00
11211-263	551 W School Street	West School	115.00	\$18.50	\$ 2,127.50
11211-264	531 W School Street	West School	60.00	\$18.50	\$ 1,110.00
11211-265	519 W School Street	West School	65.00	\$18.50	\$ 1,202.50
11211-266	507 W School Street	West School	60.00	\$18.50	\$ 1,110.00
11211-368	351 S Birdsey Street	West School	60.00	\$18.50	\$ 1,110.00
11211-367	448 W School Street	West School	60.00	\$18.50	\$ 1,110.00
11211-366	436 W School Street	West School	60.00	\$18.50	\$ 1,110.00
11211-365	424 W School Street	West School	60.00	\$18.50	\$ 1,110.00
11211-364	414 W School Street	West School	98.00	\$18.50	\$ 1,813.00
11211-342	459 W School Street	West School	60.00	\$18.50	\$ 1,110.00
11211-343	451 W School Street	West School	60.00	\$18.50	\$ 1,110.00
11211-344	435 W School Street	West School	60.00	\$18.50	\$ 1,110.00
11211-345	425 W School Street	West School	60.00	\$18.50	\$ 1,110.00
11211-346	411 W School Street	West School	98.00	\$18.50	\$ 1,813.00
11211-389	354 W School Street	West School	60.00	\$18.50	\$ 1,110.00
11211-388	340 W School Street	West School	60.00	\$18.50	\$ 1,110.00
11211-387	330 W School Street	West School	60.00	\$18.50	\$ 1,110.00
11211-386	308 W School Street	West School	120.00	\$18.50	\$ 2,220.00
11211-392	353 W School Street	West School	90.00	\$18.50	\$ 1,665.00
11211-393	335 W School Street	West School	90.00	\$18.50	\$ 1,665.00
11211-394	319 W School Street	West School	60.00	\$18.50	\$ 1,110.00
11211-395	200 W School Street	West School	60.00	\$18.50	\$ 1,110.00
11211-153	347 S Spring Street	West School	85.00	\$18.50	\$ 1,572.50
11211-152	348 South Dickason Boulevard	West School	215.00	\$18.50	\$ 3,977.50
11211-423	200 W School Street	West School	360.00	\$18.50	\$ 6,660.00
11211-165	351 S Dickason Boulevard	West School	100.00	\$18.50	\$ 1,850.00
11211-164	132 W School Street	West School	60.00	\$18.50	\$ 1,110.00
11211-163	120 W School Street	West School	50.00	\$18.50	\$ 925.00
11211-162.01	352 S Ludington Street	West School	87.00	\$18.50	\$ 1,609.50
11211-188	153 W School Street	West School	70.00	\$18.50	\$ 1,295.00
11211-189	139 W School Street	West School	56.00	\$18.50	\$ 1,036.00
11211-189.01	No address	West School	8.00	\$18.50	\$ 148.00
11211-182	129 W School Street	West School	60.00	\$18.50	\$ 1,110.00
11211-183.01	107 W School Street	West School	100.00	\$18.50	\$ 1,850.00

**CITY OF COLUMBUS**  
**2026 West School Street Reconstruction**  
3/2/2026  
**Concrete Driveway Approaches**

Parcel No.	Address	Frontage	Qty (SF)	Unit Price	Total
11211-495	344 S Charles Street	300.00	267	\$9.00	\$ 2,403.00
11211-498.2	411 Hibbard Street	50.00	0	\$9.00	\$ -
11211-498.1	743 W School Street	70.00	140	\$9.00	\$ 1,260.00
11211-497	731 W School Street	80.00	270	\$9.00	\$ 2,430.00
11211-496	651 W School Street	100.00	155	\$9.00	\$ 1,395.00
11211-436	347 Charles Street	150.00	125	\$9.00	\$ 1,125.00
11211-437	346 S Lewis Street	150.00	270	\$9.00	\$ 2,430.00
11211-440	649 W School Street	60.00	0	\$9.00	\$ -
11211-439	641 W School Street	60.00	120	\$9.00	\$ 1,080.00
11211-438.2	629 W School Street	60.00	126	\$9.00	\$ 1,134.00
11211-438.1	410 S Lewis Street	120.00	210	\$9.00	\$ 1,890.00
11211-261	552 W School Street	60.00	0	\$9.00	\$ -
11211-260	544 W School Street	65.00	55	\$9.00	\$ 495.00
11211-259	524 W School Street	65.00	55	\$9.00	\$ 495.00
11211-258	352 S Birdsey Street	110.00	243	\$9.00	\$ 2,187.00
11211-263	551 W School Street	115.00	0	\$9.00	\$ -
11211-264	531 W School Street	60.00	120	\$9.00	\$ 1,080.00
11211-265	519 W School Street	65.00	150	\$9.00	\$ 1,350.00
11211-266	507 W School Street	60.00	105	\$9.00	\$ 945.00
11211-368	351 S Birdsey Street	60.00	0	\$9.00	\$ -
11211-367	448 W School Street	60.00	120	\$9.00	\$ 1,080.00
11211-366	436 W School Street	60.00	115	\$9.00	\$ 1,035.00
11211-365	424 W School Street	60.00	115	\$9.00	\$ 1,035.00
11211-364	414 W School Street	98.00	0	\$9.00	\$ -
11211-342	459 W School Street	60.00	0	\$9.00	\$ -
11211-343	451 W School Street	60.00	100	\$9.00	\$ 900.00
11211-344	435 W School Street	60.00	135	\$9.00	\$ 1,215.00
11211-345	425 W School Street	60.00	135	\$9.00	\$ 1,215.00
11211-346	411 W School Street	98.00	195	\$9.00	\$ 1,755.00
11211-389	354 W School Street	60.00	0	\$9.00	\$ -
11211-388	340 W School Street	60.00	150	\$9.00	\$ 1,350.00
11211-387	330 W School Street	60.00	111	\$9.00	\$ 999.00
11211-386	308 W School Street	120.00	0	\$9.00	\$ -
11211-392	353 W School Street	90.00	181	\$9.00	\$ 1,629.00
11211-393	335 W School Street	90.00	111	\$9.00	\$ 999.00
11211-394	319 W School Street	60.00	111	\$9.00	\$ 999.00
11211-395	200 W School Street	60.00	0	\$9.00	\$ -
11211-153	347 S Spring Street	85.00	0	\$9.00	\$ -
11211-152	348 South Dickason Boulevard	215.00	142	\$9.00	\$ 1,278.00
11211-423	200 W School Street	360.00	345	\$9.00	\$ 3,105.00
11211-165	351 S Dickason Boulevard	100.00	182	\$9.00	\$ 1,638.00
11211-164	132 W School Street	60.00	126	\$9.00	\$ 1,134.00
11211-163	120 W School Street	50.00	175	\$9.00	\$ 1,575.00
11211-162.01	352 S Ludington Street	87.00	215	\$9.00	\$ 1,935.00
11211-188	153 W School Street	70.00	115	\$9.00	\$ 1,035.00
11211-189	139 W School Street	56.00	115	\$9.00	\$ 1,035.00
11211-189.01	No address	8.00	0	\$9.00	\$ -
11211-182	129 W School Street	60.00	155	\$9.00	\$ 1,395.00
11211-183.01	107 W School Street	100.00	255	\$9.00	\$ 2,295.00

Joint Driveway split 50% each

**CITY OF COLUMBUS**  
**2026 West School Street Reconstruction**  
3/2/2026  
**Sidewalk**

Parcel No.	Address	Frontage	Sidewalk Lengths per Frontage (LF)	Sidewalk Minus Driveway Width (LF)	Sidewalk Through Drive (100%)	Sidewalk Outside of Drive (50%)	Carrage Walks (100%)
11211-495	344 S Charles Street	West School	300.00	274.42	\$ 895.30	\$4,802.35	\$ -
11211-498.2	411 Hibbard Street	West School	50.00	50.00	\$ -	\$875.00	\$ -
11211-498.1	743 W School Street	West School	70.00	58.08	\$ 417.20	\$1,016.40	\$ -
11211-497	731 W School Street	West School	80.00	55.91	\$ 843.15	\$978.43	\$ -
11211-496	651 W School Street	West School	100.00	85.97	\$ 491.05	\$1,504.48	\$ -
11211-436	347 Charles Street	West School	150.00	139.12	\$ 380.80	\$2,434.60	\$ -
11211-437	346 S Lewis Street	West School	150.00	124.00	\$ 910.00	\$2,170.00	\$ -
11211-440	649 W School Street	West School	60.00	60.00	\$ -	\$1,050.00	\$ -
11211-439	641 W School Street	West School	60.00	49.54	\$ 366.10	\$866.95	\$ -
11211-438.2	629 W School Street	West School	60.00	48.80	\$ 392.00	\$854.00	\$ -
11211-438.1	410 S Lewis Street	West School	120.00	99.92	\$ 702.80	\$1,748.60	\$ -
11211-261	552 W School Street	West School	60.00	60.00	\$ -	\$1,050.00	\$ -
11211-260	544 W School Street	West School	65.00	60.30	\$ 164.50	\$1,055.25	\$ -
11211-259	524 W School Street	West School	65.00	60.30	\$ 164.50	\$1,055.25	\$ -
11211-258	352 S Birdsey Street	West School	110.00	86.52	\$ 821.80	\$1,514.10	\$ -
11211-263	551 W School Street	West School	115.00	115.00	\$ -	\$2,012.50	\$ 203.02
11211-264	531 W School Street	West School	60.00	49.55	\$ 365.75	\$867.13	\$ -
11211-265	519 W School Street	West School	65.00	51.63	\$ 467.95	\$903.53	\$ -
11211-266	507 W School Street	West School	60.00	50.95	\$ 316.75	\$891.63	\$ -
11211-368	351 S Birdsey Street	West School	60.00	60.00	\$ -	\$1,050.00	\$ -
11211-367	448 W School Street	West School	60.00	49.43	\$ 369.95	\$865.03	\$ -
11211-366	436 W School Street	West School	60.00	48.10	\$ 416.50	\$841.75	\$ -
11211-365	424 W School Street	West School	60.00	48.10	\$ 416.50	\$841.75	\$ 239.47
11211-364	414 W School Street	West School	98.00	98.00	\$ -	\$1,715.00	\$ 330.04
11211-342	459 W School Street	West School	60.00	60.00	\$ -	\$1,050.00	\$ -
11211-343	451 W School Street	West School	60.00	51.50	\$ 297.50	\$901.25	\$ -
11211-344	435 W School Street	West School	60.00	48.05	\$ 418.25	\$840.88	\$ -
11211-345	425 W School Street	West School	60.00	47.80	\$ 427.00	\$836.50	\$ -
11211-346	411 W School Street	West School	98.00	79.51	\$ 647.15	\$1,391.43	\$ -
11211-389	354 W School Street	West School	60.00	60.00	\$ -	\$1,050.00	\$ -
11211-388	340 W School Street	West School	60.00	46.52	\$ 471.80	\$814.10	\$ -
11211-387	330 W School Street	West School	60.00	50.41	\$ 335.65	\$882.18	\$ -
11211-386	308 W School Street	West School	120.00	120.00	\$ -	\$2,100.00	\$ -
11211-392	353 W School Street	West School	90.00	73.03	\$ 593.95	\$1,278.03	\$ -
11211-393	335 W School Street	West School	90.00	79.41	\$ 370.65	\$1,389.68	\$ -
11211-394	319 W School Street	West School	60.00	49.41	\$ 370.65	\$864.68	\$ -
11211-395	200 W School Street	West School	60.00	60.00	\$ -	\$1,050.00	\$ -
11211-153	347 S Spring Street	West School	85.00	85.00	\$ -	\$1,487.50	\$ -
11211-152	348 South Dickason Boulevard	West School	215.00	202.15	\$ 449.75	\$3,537.63	\$ -
11211-423	200 W School Street	West School	360.00	327.71	\$ 1,130.15	\$5,734.93	\$ -
11211-165	351 S Dickason Boulevard	West School	100.00	82.93	\$ 597.45	\$1,451.28	\$ -
11211-164	132 W School Street	West School	60.00	48.84	\$ 390.60	\$854.70	\$ -
11211-163	120 W School Street	West School	50.00	33.61	\$ 573.65	\$588.18	\$ -
11211-162.01	352 S Ludington Street	West School	87.00	66.71	\$ 710.15	\$1,167.43	\$ -
11211-188	153 W School Street	West School	70.00	59.09	\$ 381.85	\$1,034.08	\$ -
11211-189	139 W School Street	West School	56.00	45.09	\$ 381.85	\$789.08	\$ -
11211-189.01	No address	West School	8.00	8.00	\$ -	\$140.00	\$ -
11211-182	129 W School Street	West School	60.00	45.76	\$ 498.40	\$800.80	\$ -
11211-183.01	107 W School Street	West School	100.00	75.21	\$ 867.65	\$1,316.18	\$ -

CITY OF COLUMBUS  
**2026 West School Street Reconstruction**  
 3/2/2026  
**Drop Off Lane**

Parcel No.	Lot Address	Frontage	Curb Lengths (LF)	Unit Price	18-Inch Concrete Curb and Gutter	CABC Tonnage per Frontage (TON)	Unit Price	CABC	Asphalt Binder Tonnage per Frontage (TON)	Unit Price	Asphalt Binder	Asphalt Surface Tonnage per Frontage (TON)	Unit Price	Asphalt Surface	Drop Off Lane Construction Total
11211-495	344 S Charles Street	West School	0.00	\$33.00	\$ -	0	\$15.00	\$0.00	0	\$81.00	\$0.00	0	\$82.00	\$0.00	\$ -
11211-498.2	411 Hibbard Street	West School	0.00	\$33.00	\$ -	0	\$15.00	\$0.00	0	\$81.00	\$0.00	0	\$82.00	\$0.00	\$ -
11211-498.1	743 W School Street	West School	0.00	\$33.00	\$ -	0	\$15.00	\$0.00	0	\$81.00	\$0.00	0	\$82.00	\$0.00	\$ -
11211-497	731 W School Street	West School	0.00	\$33.00	\$ -	0	\$15.00	\$0.00	0	\$81.00	\$0.00	0	\$82.00	\$0.00	\$ -
11211-496	651 W School Street	West School	0.00	\$33.00	\$ -	0	\$15.00	\$0.00	0	\$81.00	\$0.00	0	\$82.00	\$0.00	\$ -
11211-436	347 Charles Street	West School	0.00	\$33.00	\$ -	0	\$15.00	\$0.00	0	\$81.00	\$0.00	0	\$82.00	\$0.00	\$ -
11211-437	346 S Lewis Street	West School	0.00	\$33.00	\$ -	0	\$15.00	\$0.00	0	\$81.00	\$0.00	0	\$82.00	\$0.00	\$ -
11211-440	649 W School Street	West School	0.00	\$33.00	\$ -	0	\$15.00	\$0.00	0	\$81.00	\$0.00	0	\$82.00	\$0.00	\$ -
11211-439	641 W School Street	West School	0.00	\$33.00	\$ -	0	\$15.00	\$0.00	0	\$81.00	\$0.00	0	\$82.00	\$0.00	\$ -
11211-438.2	629 W School Street	West School	0.00	\$33.00	\$ -	0	\$15.00	\$0.00	0	\$81.00	\$0.00	0	\$82.00	\$0.00	\$ -
11211-438.1	410 S Lewis Street	West School	0.00	\$33.00	\$ -	0	\$15.00	\$0.00	0	\$81.00	\$0.00	0	\$82.00	\$0.00	\$ -
11211-261	552 W School Street	West School	0.00	\$33.00	\$ -	0	\$15.00	\$0.00	0	\$81.00	\$0.00	0	\$82.00	\$0.00	\$ -
11211-260	544 W School Street	West School	0.00	\$33.00	\$ -	0	\$15.00	\$0.00	0	\$81.00	\$0.00	0	\$82.00	\$0.00	\$ -
11211-259	524 W School Street	West School	0.00	\$33.00	\$ -	0	\$15.00	\$0.00	0	\$81.00	\$0.00	0	\$82.00	\$0.00	\$ -
11211-258	352 S Birdsey Street	West School	0.00	\$33.00	\$ -	0	\$15.00	\$0.00	0	\$81.00	\$0.00	0	\$82.00	\$0.00	\$ -
11211-263	551 W School Street	West School	0.00	\$33.00	\$ -	0	\$15.00	\$0.00	0	\$81.00	\$0.00	0	\$82.00	\$0.00	\$ -
11211-264	531 W School Street	West School	0.00	\$33.00	\$ -	0	\$15.00	\$0.00	0	\$81.00	\$0.00	0	\$82.00	\$0.00	\$ -
11211-265	519 W School Street	West School	0.00	\$33.00	\$ -	0	\$15.00	\$0.00	0	\$81.00	\$0.00	0	\$82.00	\$0.00	\$ -
11211-266	507 W School Street	West School	0.00	\$33.00	\$ -	0	\$15.00	\$0.00	0	\$81.00	\$0.00	0	\$82.00	\$0.00	\$ -
11211-368	351 S Birdsey Street	West School	0.00	\$33.00	\$ -	0	\$15.00	\$0.00	0	\$81.00	\$0.00	0	\$82.00	\$0.00	\$ -
11211-367	448 W School Street	West School	0.00	\$33.00	\$ -	0	\$15.00	\$0.00	0	\$81.00	\$0.00	0	\$82.00	\$0.00	\$ -
11211-366	436 W School Street	West School	0.00	\$33.00	\$ -	0	\$15.00	\$0.00	0	\$81.00	\$0.00	0	\$82.00	\$0.00	\$ -
11211-365	424 W School Street	West School	0.00	\$33.00	\$ -	0	\$15.00	\$0.00	0	\$81.00	\$0.00	0	\$82.00	\$0.00	\$ -
11211-364	414 W School Street	West School	0.00	\$33.00	\$ -	0	\$15.00	\$0.00	0	\$81.00	\$0.00	0	\$82.00	\$0.00	\$ -
11211-342	459 W School Street	West School	0.00	\$33.00	\$ -	0	\$15.00	\$0.00	0	\$81.00	\$0.00	0	\$82.00	\$0.00	\$ -
11211-343	451 W School Street	West School	0.00	\$33.00	\$ -	0	\$15.00	\$0.00	0	\$81.00	\$0.00	0	\$82.00	\$0.00	\$ -
11211-344	435 W School Street	West School	0.00	\$33.00	\$ -	0	\$15.00	\$0.00	0	\$81.00	\$0.00	0	\$82.00	\$0.00	\$ -
11211-345	425 W School Street	West School	0.00	\$33.00	\$ -	0	\$15.00	\$0.00	0	\$81.00	\$0.00	0	\$82.00	\$0.00	\$ -
11211-346	411 W School Street	West School	0.00	\$33.00	\$ -	0	\$15.00	\$0.00	0	\$81.00	\$0.00	0	\$82.00	\$0.00	\$ -
11211-389	354 W School Street	West School	0.00	\$33.00	\$ -	0	\$15.00	\$0.00	0	\$81.00	\$0.00	0	\$82.00	\$0.00	\$ -
11211-388	340 W School Street	West School	0.00	\$33.00	\$ -	0	\$15.00	\$0.00	0	\$81.00	\$0.00	0	\$82.00	\$0.00	\$ -
11211-387	330 W School Street	West School	0.00	\$33.00	\$ -	0	\$15.00	\$0.00	0	\$81.00	\$0.00	0	\$82.00	\$0.00	\$ -
11211-386	308 W School Street	West School	0.00	\$33.00	\$ -	0	\$15.00	\$0.00	0	\$81.00	\$0.00	0	\$82.00	\$0.00	\$ -
11211-392	353 W School Street	West School	0.00	\$33.00	\$ -	0	\$15.00	\$0.00	0	\$81.00	\$0.00	0	\$82.00	\$0.00	\$ -
11211-393	335 W School Street	West School	0.00	\$33.00	\$ -	0	\$15.00	\$0.00	0	\$81.00	\$0.00	0	\$82.00	\$0.00	\$ -
11211-394	319 W School Street	West School	0.00	\$33.00	\$ -	0	\$15.00	\$0.00	0	\$81.00	\$0.00	0	\$82.00	\$0.00	\$ -
11211-395	200 W School Street	West School	67.00	\$33.00	\$ 2,211.00	38	\$15.00	\$570.00	5.5	\$81.00	\$445.50	4.25	\$82.00	\$348.50	\$ 1,787.50
11211-153	347 S Spring Street	West School	0.00	\$33.00	\$ -	0	\$15.00	\$0.00	0	\$81.00	\$0.00	0	\$82.00	\$0.00	\$ -
11211-152	348 South Dickason Boulevard	West School	0.00	\$33.00	\$ -	0	\$15.00	\$0.00	0	\$81.00	\$0.00	0	\$82.00	\$0.00	\$ -
11211-423	200 W School Street	West School	234.00	\$33.00	\$ 7,722.00	150	\$15.00	\$2,250.00	22.5	\$81.00	\$1,822.50	17.5	\$82.00	\$1,435.00	\$ 6,614.75
11211-165	351 S Dickason Boulevard	West School	0.00	\$33.00	\$ -	0	\$15.00	\$0.00	0	\$81.00	\$0.00	0	\$82.00	\$0.00	\$ -
11211-164	132 W School Street	West School	0.00	\$33.00	\$ -	0	\$15.00	\$0.00	0	\$81.00	\$0.00	0	\$82.00	\$0.00	\$ -
11211-163	120 W School Street	West School	0.00	\$33.00	\$ -	0	\$15.00	\$0.00	0	\$81.00	\$0.00	0	\$82.00	\$0.00	\$ -
11211-162.01	352 S Ludington Street	West School	0.00	\$33.00	\$ -	0	\$15.00	\$0.00	0	\$81.00	\$0.00	0	\$82.00	\$0.00	\$ -
11211-188	153 W School Street	West School	0.00	\$33.00	\$ -	0	\$15.00	\$0.00	0	\$81.00	\$0.00	0	\$82.00	\$0.00	\$ -
11211-189	139 W School Street	West School	0.00	\$33.00	\$ -	0	\$15.00	\$0.00	0	\$81.00	\$0.00	0	\$82.00	\$0.00	\$ -
11211-189.01	No address	West School	0.00	\$33.00	\$ -	0	\$15.00	\$0.00	0	\$81.00	\$0.00	0	\$82.00	\$0.00	\$ -
11211-182	129 W School Street	West School	0.00	\$33.00	\$ -	0	\$15.00	\$0.00	0	\$81.00	\$0.00	0	\$82.00	\$0.00	\$ -
11211-183.01	107 W School Street	West School	0.00	\$33.00	\$ -	0	\$15.00	\$0.00	0	\$81.00	\$0.00	0	\$82.00	\$0.00	\$ -

Curb is total length not lot frontage

**CITY OF COLUMBUS**  
**2026 West School Street Reconstruction**  
**3/2/2026**  
**Storm System Costs**

Note: for location and contributing properties for each system, see maps in Appendix E

**Storm Sewer**

**Area 1: Hibbard to Charles (mid Block)**

Item No	Item	Unit	Quantity	Unit \$	Total
25	12-Inch RCP Class V Storm Sewer w/Granular Backfill	LF	38	\$ 70.00	\$2,660
26	15-Inch RCP Class IV Storm Sewer w/Granular Backfill	LF	0	\$ 75.00	\$0
28	19 x 30-Inch RCP Class IV Storm Sewer w/Granular Backfill	LF	0	\$ 148.00	\$0
29	24-Inch RCP Class IV Storm Sewer w/Granular Backfill	LF	0	\$ 105.00	\$0
30	48-Inch Storm Sewer Manhole w/Frame and Cover	EACH	0	\$ 4,400.00	\$0
31	60-Inch Storm Sewer Manhole w/Frame and Cover	EACH	0	\$ 4,750.00	\$0
32	2'x3' Standard Catch Basin Precast Box w/Frame and Grate	EACH	2	\$ 3,300.00	\$6,600
<b>Total</b>					<b>\$9,260.00</b>

**Storm Sewer**

**Area 2: Charles to Main**

Item No	Item	Unit	Quantity	Unit \$	Total
25	12-Inch RCP Class V Storm Sewer w/Granular Backfill	LF	817	\$ 70.00	\$57,190
26	15-Inch RCP Class IV Storm Sewer w/Granular Backfill	LF	365	\$ 75.00	\$27,375
28	19 x 30-Inch RCP Class IV Storm Sewer w/Granular Backfill	LF	385	\$ 148.00	\$56,980
29	24-Inch RCP Class IV Storm Sewer w/Granular Backfill	LF	5	\$ 105.00	\$525
30	48-Inch Storm Sewer Manhole w/Frame and Cover	EACH	4	\$ 4,400.00	\$17,600
31	60-Inch Storm Sewer Manhole w/Frame and Cover	EACH	1	\$ 4,750.00	\$4,750
32	2'x3' Standard Catch Basin Precast Box w/Frame and Grate	EACH	18	\$ 3,300.00	\$59,400
<b>Total</b>					<b>\$223,820.00</b>

**Storm Sewer**

**Area 3: Main to Dickason**

Item No	Item	Unit	Quantity	Unit \$	Total
25	12-Inch RCP Class V Storm Sewer w/Granular Backfill	LF	158	\$ 70.00	\$11,060
26	15-Inch RCP Class IV Storm Sewer w/Granular Backfill	LF	0	\$ 75.00	\$0
27	18-Inch RCP Class IV Storm Sewer w/Granular Backfill	LF	5	\$ 150.00	\$750
28	19 x 30-Inch RCP Class IV Storm Sewer w/Granular Backfill	LF	0	\$ 148.00	\$0
29	24-Inch RCP Class IV Storm Sewer w/Granular Backfill	LF	0	\$ 105.00	\$0
30	48-Inch Storm Sewer Manhole w/Frame and Cover	EACH	1	\$ 4,400.00	\$4,400
31	60-Inch Storm Sewer Manhole w/Frame and Cover	EACH	0	\$ 4,750.00	\$0
32	2'x3' Standard Catch Basin Precast Box w/Frame and Grate	EACH	7	\$ 3,300.00	\$23,100
<b>Total</b>					<b>\$39,310.00</b>

**Storm Sewer**

**Area 4: Dickason to S Luddington**

Item No	Item	Unit	Quantity	Unit \$	Total
25	12-Inch RCP Class V Storm Sewer w/Granular Backfill	LF	137	\$ 70.00	\$9,590
26	15-Inch RCP Class IV Storm Sewer w/Granular Backfill	LF	0	\$ 75.00	\$0
28	19 x 30-Inch RCP Class IV Storm Sewer w/Granular Backfill	LF	0	\$ 148.00	\$0
29	24-Inch RCP Class IV Storm Sewer w/Granular Backfill	LF	20	\$ 105.00	\$2,100
30	48-Inch Storm Sewer Manhole w/Frame and Cover	EACH	1	\$ 4,400.00	\$4,400
31	60-Inch Storm Sewer Manhole w/Frame and Cover	EACH	0	\$ 4,750.00	\$0
32	2'x3' Standard Catch Basin Precast Box w/Frame and Grate	EACH	7	\$ 3,300.00	\$23,100
<b>Total</b>					<b>\$39,190.00</b>

**CITY OF COLUMBUS**  
**2026 West School Street Reconstruction**

3/2/2026

**Storm System Assessed By Property**

Parcel No.	Address	Frontage Street	Frontage Length (LF)	% of Total	100% Sub-total System Cost	15% Sub-total System Cost	Total Storm Water Assessment (% of total)
------------	---------	-----------------	----------------------	------------	----------------------------	---------------------------	---

**Storm Sewer**

**Area 1: Hibbard to Charles (mid Block)**

11211-495	344 S Charles Street	West School Street	226.00	53.05%	\$4,912.58	\$736.89	15.00%
11211-498.2	411 Hibbard Street	West School Street	50.00	11.74%	\$1,086.85	\$163.03	15.00%
11211-498.1	743 W School Street	West School Street	70.00	16.43%	\$1,521.60	\$228.24	15.00%
11211-497	731 W School Street	West School Street	80.00	18.78%	\$1,738.97	\$260.85	15.00%
11211-496	651 W School Street	West School Street	26.00	1.28%	\$2,875.16	\$431.27	15.00%
TOTAL			426.00	100%	\$9,260.00	\$1,389.00	15.00%

**Storm Sewer**

**Area 2: Charles to Main**

11211-495	344 S Charles Street	West School Street	74.00	3.66%	\$8,183.14	\$1,227.47	15.00%
11211-496	651 W School Street	West School Street	74.00	3.66%	\$8,183.14	\$1,227.47	15.00%
11211-436	347 Charles Street	West School Street	150.00	7.41%	\$16,587.45	\$2,488.12	15.00%
11211-437	346 S Lewis Street	West School Street	150.00	7.41%	\$16,587.45	\$2,488.12	15.00%
11211-440	649 W School Street	West School Street	60.00	2.96%	\$6,634.98	\$995.25	15.00%
11211-439	641 W School Street	West School Street	60.00	2.96%	\$6,634.98	\$995.25	15.00%
11211-438.2	629 W School Street	West School Street	60.00	2.96%	\$6,634.98	\$995.25	15.00%
11211-438.1	410 S Lewis Street	West School Street	120.00	5.93%	\$13,269.96	\$1,990.49	15.00%
11211-261	552 W School Street	West School Street	60.00	2.96%	\$6,634.98	\$995.25	15.00%
11211-260	544 W School Street	West School Street	65.00	3.21%	\$7,187.90	\$1,078.18	15.00%
11211-259	524 W School Street	West School Street	65.00	3.21%	\$7,187.90	\$1,078.18	15.00%
11211-258	352 S Birdsey Street	West School Street	110.00	5.43%	\$12,164.13	\$1,824.62	15.00%
11211-263	551 W School Street	West School Street	115.00	5.68%	\$12,717.05	\$1,907.56	15.00%
11211-264	531 W School Street	West School Street	60.00	2.96%	\$6,634.98	\$995.25	15.00%
11211-265	519 W School Street	West School Street	65.00	3.21%	\$7,187.90	\$1,078.18	15.00%
11211-266	507 W School Street	West School Street	60.00	2.96%	\$6,634.98	\$995.25	15.00%
11211-368	351 S Birdsey Street	West School Street	60.00	2.96%	\$6,634.98	\$995.25	15.00%
11211-367	448 W School Street	West School Street	60.00	2.96%	\$6,634.98	\$995.25	15.00%
11211-366	436 W School Street	West School Street	60.00	2.96%	\$6,634.98	\$995.25	15.00%
11211-365	424 W School Street	West School Street	60.00	2.96%	\$6,634.98	\$995.25	15.00%
11211-364	414 W School Street	West School Street	98.00	4.84%	\$10,837.13	\$1,625.57	15.00%
11211-342	459 W School Street	West School Street	60.00	2.96%	\$6,634.98	\$995.25	15.00%
11211-343	451 W School Street	West School Street	60.00	2.96%	\$6,634.98	\$995.25	15.00%
11211-344	435 W School Street	West School Street	60.00	2.96%	\$6,634.98	\$995.25	15.00%
11211-345	425 W School Street	West School Street	60.00	2.96%	\$6,634.98	\$995.25	15.00%
11211-346	411 W School Street	West School Street	98.00	4.84%	\$10,837.13	\$1,625.57	15.00%
TOTAL			2,024.00	100%	\$223,820.00	\$33,573.00	15.00%

**Storm Sewer**

**Area 3: Main to Dickason**

11211-389	354 W School Street	West School Street	60.00	4.76%	\$1,871.90	\$280.79	15.00%
11211-388	340 W School Street	West School Street	60.00	4.76%	\$1,871.90	\$280.79	15.00%
11211-387	330 W School Street	West School Street	60.00	4.76%	\$1,871.90	\$280.79	15.00%
11211-386	308 W School Street	West School Street	120.00	9.52%	\$3,743.81	\$561.57	15.00%
11211-392	353 W School Street	West School Street	90.00	7.14%	\$2,807.86	\$421.18	15.00%
11211-393	335 W School Street	West School Street	90.00	7.14%	\$2,807.86	\$421.18	15.00%
11211-394	319 W School Street	West School Street	60.00	4.76%	\$1,871.90	\$280.79	15.00%
11211-395	200 W School Street	West School Street	60.00	4.76%	\$1,871.90	\$280.79	15.00%
11211-153	347 S Spring Street	West School Street	85.00	6.75%	\$2,651.87	\$397.78	15.00%
11211-152	348 South Dickason Boulevard	West School Street	215.00	17.06%	\$6,707.66	\$1,006.15	15.00%
11211-423	200 W School Street	West School Street	360.00	28.57%	\$11,231.43	\$1,684.71	15.00%
TOTAL			1,260.00	100%	\$39,310.00	\$5,896.50	15.00%

**Storm Sewer**

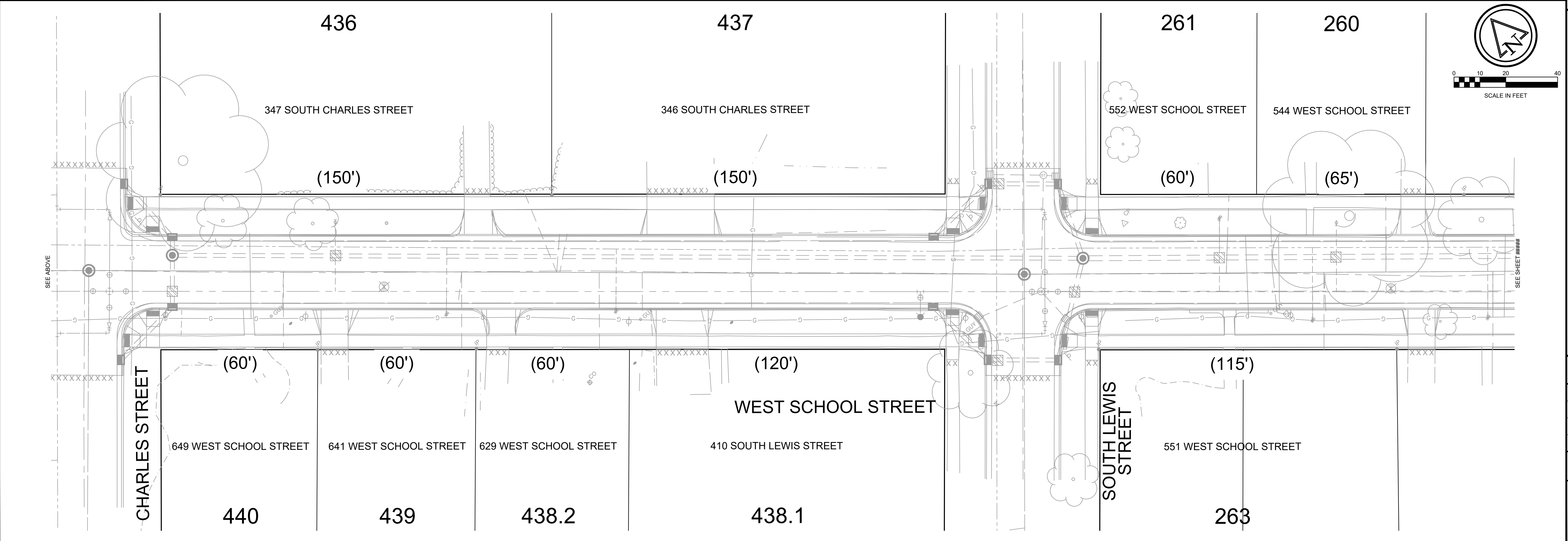
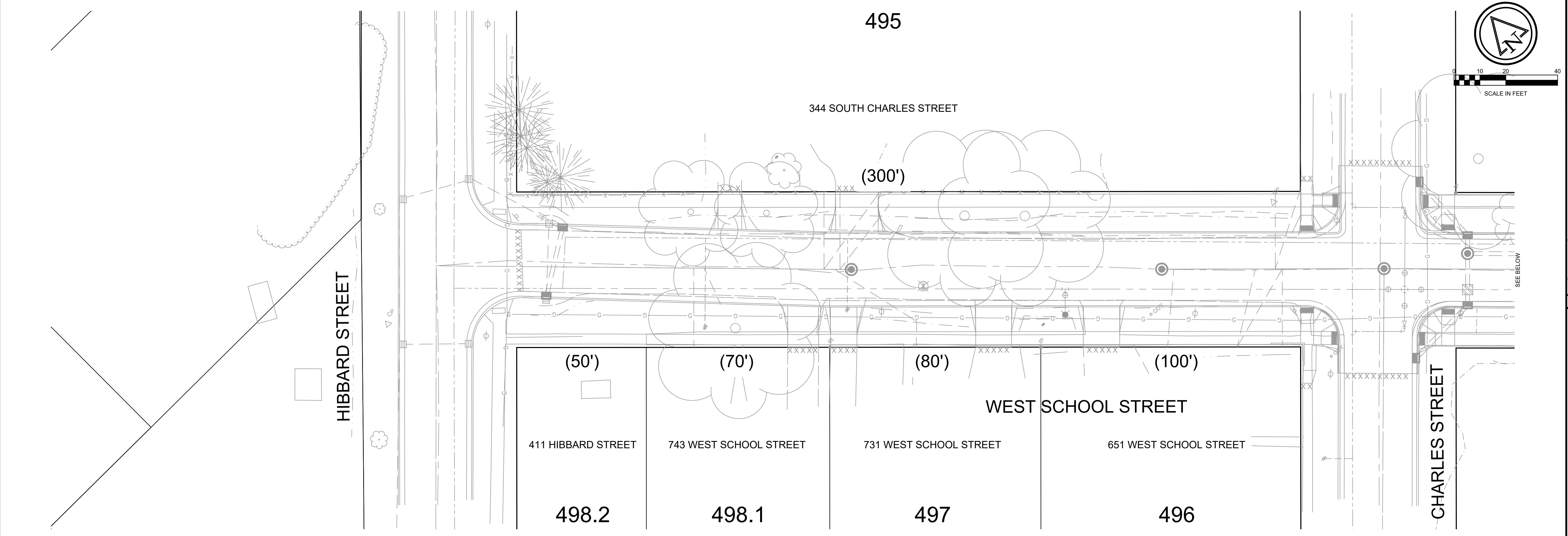
**Area 4: Dickason to S Luddington**

11211-165	351 S Dickason Boulevard	West School Street	100.00	16.92%	\$6,631.13	\$994.67	15.00%
11211-164	132 W School Street	West School Street	60.00	10.15%	\$3,978.68	\$596.80	15.00%
11211-163	120 W School Street	West School Street	50.00	8.46%	\$3,315.57	\$497.34	15.00%
11211-162.01	352 S Luddington Street	West School Street	87.00	14.72%	\$5,769.09	\$865.36	15.00%
11211-188	153 W School Street	West School Street	70.00	11.84%	\$4,641.79	\$696.27	15.00%
11211-189	139 W School Street	West School Street	56.00	9.48%	\$3,713.43	\$557.02	15.00%
11211-189.01	No address	West School Street	8.00	1.35%	\$530.49	\$79.57	15.00%
11211-182	129 W School Street	West School Street	60.00	10.15%	\$3,978.68	\$596.80	15.00%
11211-183.01	107 W School Street	West School Street	100.00	16.92%	\$6,631.13	\$994.67	15.00%
TOTAL			591.00	100%	\$39,190.00	\$5,878.50	15.00%

## **Appendix D**

### **Parcel Location Map**

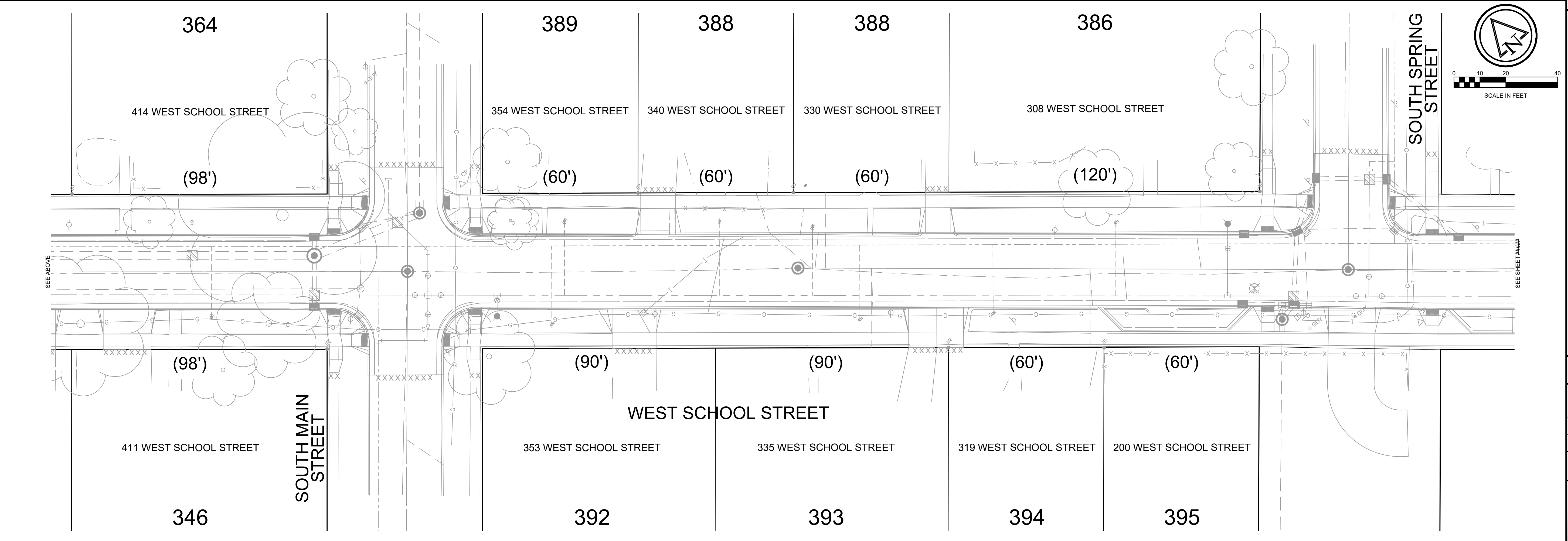
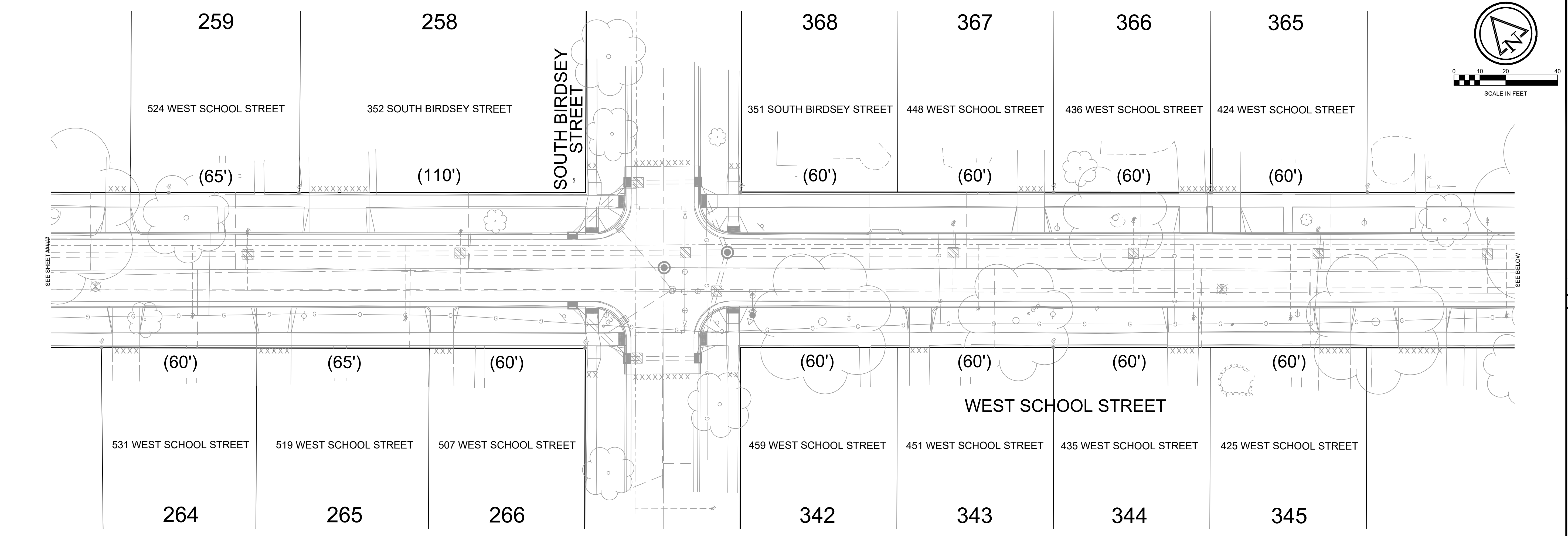
Feb 23, 2026 12:54pm PLOTTED BY: Bholdmann SAVED BY: Bholdmann  
 IMAGES: S:\R\1924\_1\_Libs\_School\_S\Special Assessment - Columns - Rubevans - Urbanest - D:\Users - Bholdmann\DWG\CAD\Assessment\17 - School St Special Assessment.dwg  
 Z:\P\ - SCHOOLS - SPECIAL ASSESSMENT.dwg Layer: 1 (W School Street) 2024.01.15 (10:00 - 2:00:26)



9	8	7	6	5	4	3	2	1
RUEKERT MIELKE								
Waukesha • Kenosha • Madison Global Water Center • Fox Valley <a href="http://www.ruekertmielke.com">www.ruekertmielke.com</a>								
<b>2026 WEST SCHOOL STREET RECONSTRUCTION</b> <b>ASSESSMENT PROPERTIES</b> <b>CITY OF COLUMBUS</b> <b>COLUMBIA COUNTY, WISCONSIN</b>								
© COPYRIGHT 2026 RUEKERT & MIELKE INC.								
DESIGNED BY: SEB DRAFTED BY: BWH CHECKED BY: JPL DATE: FEBRUARY 2026 FILE NO. <b>8117-10105</b>								
SHEET NO. <b>AS-01</b>								

www.ruekertmielke.com

Feb 23, 2024 12:54pm PLOTTED BY: Bholdmann SAVED BY: Bholdmann  
IMAGES: S:\R\1924\_1924\_Libs\_Schul\_S\Special Assessment, Culwars, Rubevans, Urbanset, Dhavars  
C:\Users\Bholdmann\Documents\2026 West School Street\2026 West School Street\Project Files\CAD\Plan Sheets\2026 West School Street\Special Assessment\01.dwg



9	8	7	6	5	4	3	2	1		
A	R	U	E	>	1	S	-	0	2	S

**Ruekert • Mielke**  
Waukesha • Kenosha • Madison  
Global Water Center • Fox Valley  
[www.ruekertmielke.com](http://www.ruekertmielke.com)

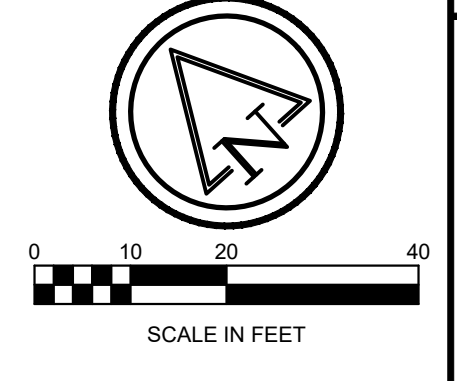
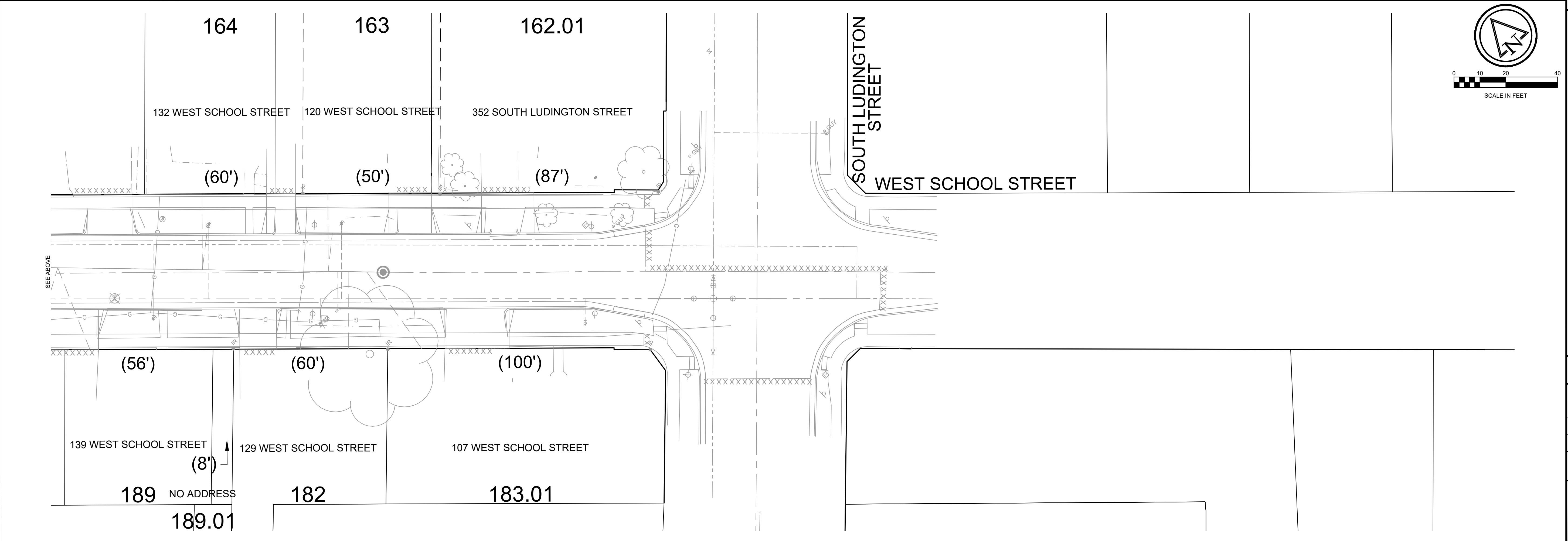
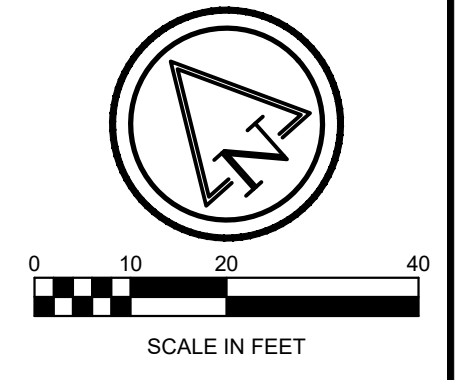
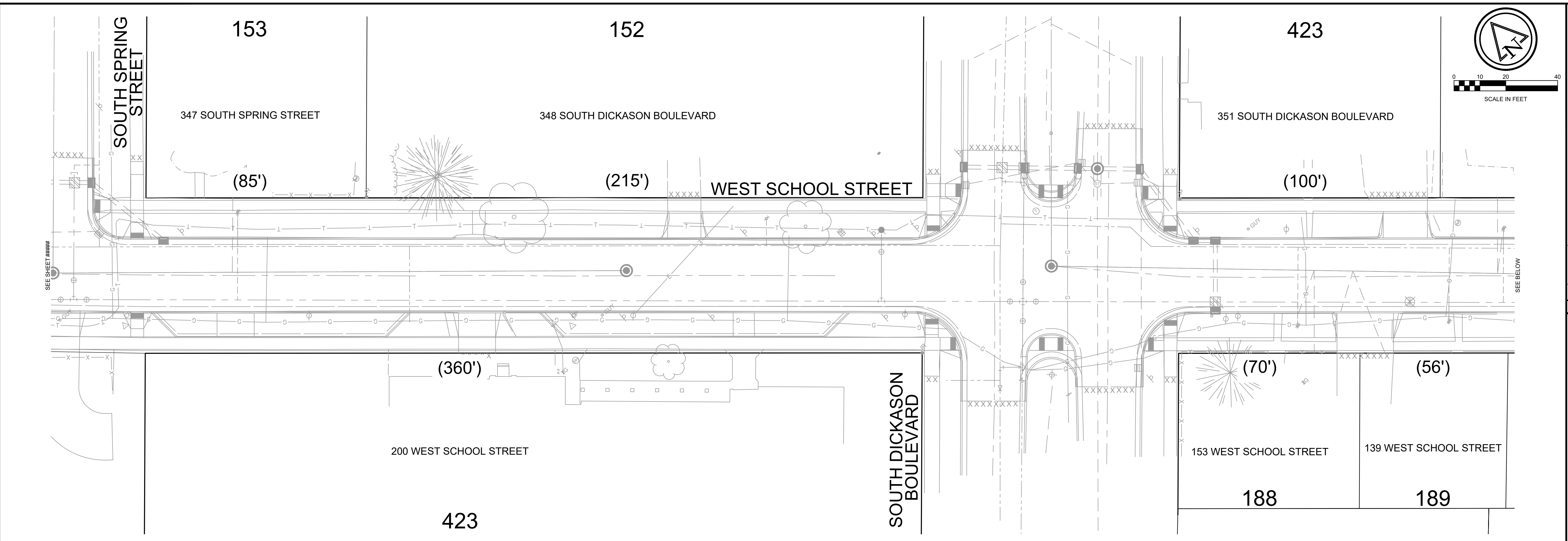
**2026 WEST SCHOOL STREET RECONSTRUCTION**  
ASSESSMENT PROPERTIES  
CITY OF COLUMBUS  
COLUMBIA COUNTY, WISCONSIN

© COPYRIGHT 2026  
RUEKERT & MIELKE INC.  
DESIGNED BY: SEB  
DRAFTED BY: BWH  
CHECKED BY: JPL  
DATE: FEBRUARY 2026  
FILE NO.  
**8117-10105**

SHEET NO.  
**AS-02**

[www.ruekertmielke.com](http://www.ruekertmielke.com)

Feb 23, 2026 12:54pm PLOTTED BY: Bholdmann SAVED BY: Bholdmann  
 IMAGES: S:\Projects\2026\26-0117-City of Columbus - W School Street\Project Files\CAD\Plan Sheets\Zap - School St Special Assessment\01.dwg  
 C:\Users\Bholdmann\Documents\2026\26-0117-City of Columbus - W School Street\Project Files\CAD\Plan Sheets\Zap - School St Special Assessment\01.dwg



9	8	7	6	5	4	3	2	1	
A	R	E	>	1	-	0	-	2	S

**Ruekert • Mielke**  
 Waukesha • Kenosha • Madison  
 Global Water Center • Fox Valley  
[www.ruekertmielke.com](http://www.ruekertmielke.com)

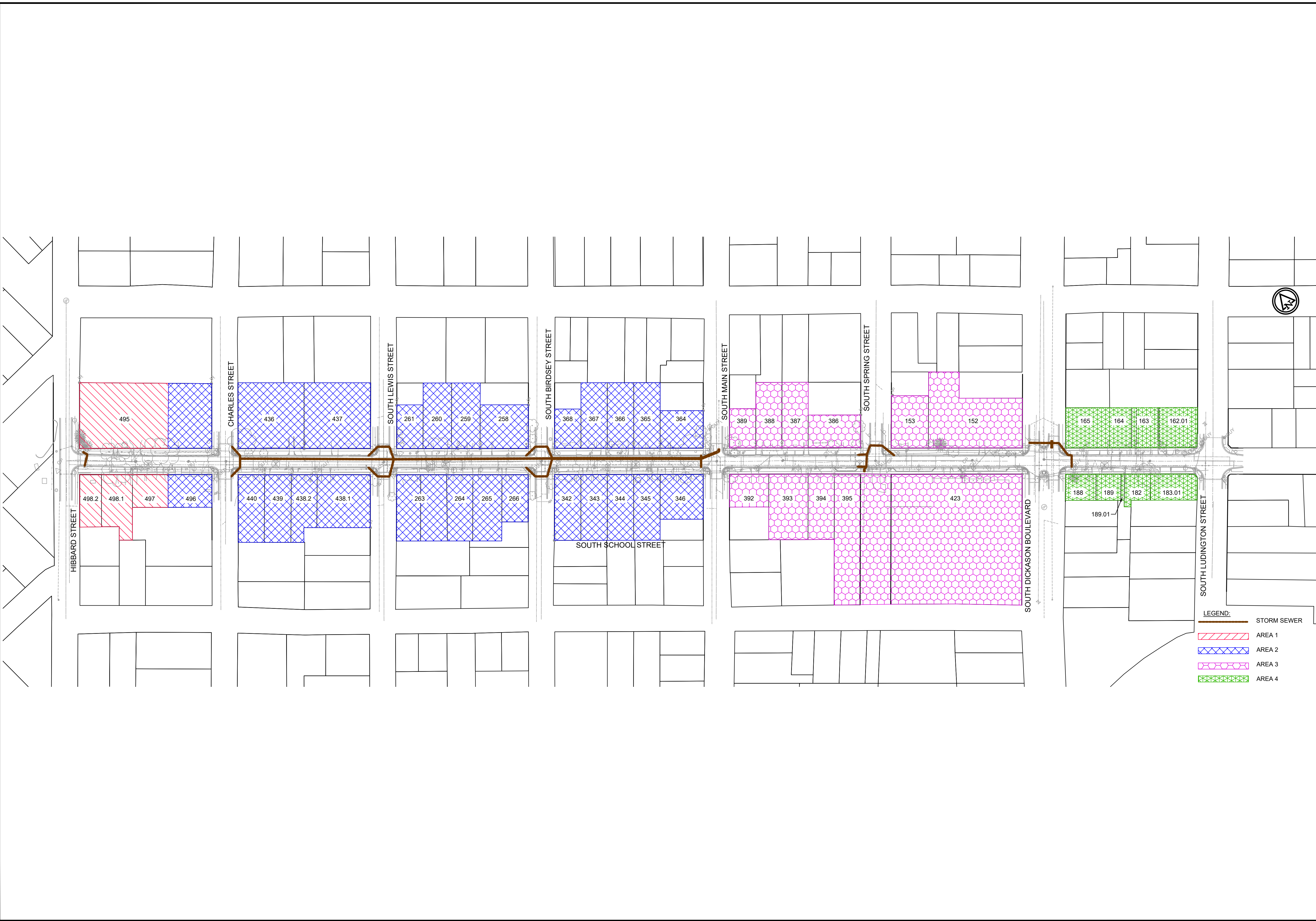
**2026 WEST SCHOOL STREET RECONSTRUCTION**  
 ASSESSMENT PROPERTIES  
 CITY OF COLUMBUS  
 COLUMBIA COUNTY, WISCONSIN

© COPYRIGHT 2026  
 RUEKERT & MIELKE INC.  
 DESIGNED BY: SEB  
 DRAFTED BY: BWH  
 CHECKED BY: JPL  
 DATE: FEBRUARY 2026  
 FILE NO.  
**8117-10105**  
 SHEET NO.  
**AS-03**

[www.ruekertmielke.com](http://www.ruekertmielke.com)

## **Appendix E**

### **Storm Sewer System Map**



9	8	7	6	5	4	3	2	1
A	R	E	V	S	-	O	Z	S