

**KNAPHEIDE**  
SINCE 1848



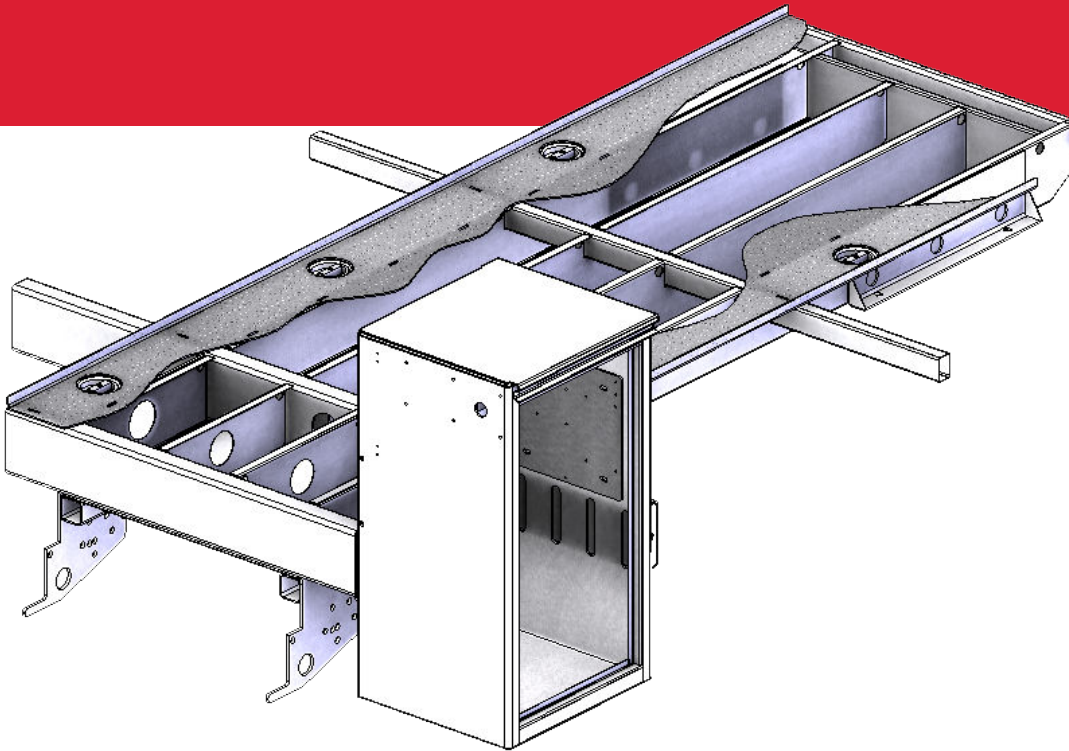
FORD  
**MECHANICS TRUCKS**



# KNAPHEIDE MECHANICS TRUCKS

Knapheide Mechanics Trucks come equipped with standard features to help you get the job done. With secure side compartments and an oversized cargo space, you can carry everything you need.

Choose a Knapheide Mechanics Truck for the durability and functionality that stands above the rest.



## CRANE BODY UNDERSTRUCTURE

Unique torq-isolator crane support system transfers lift forces into the full length torsion box subframe and outriggers, and not the side compartments.

Reinforced rear vertical curb side compartment is independent of all other side compartments, eliminating flexing and twisting of side packs.

*\*Applies to all models with exception of the steel KMS16.*

## AKMT1, KMT1, KMT2 & KMT3 MODELS

Knapheide KMT1 Mechanics Trucks are compatible with Class 5 trucks and built for crane load capacities of up to 8,600 lb. Count on our KMT2 and KMT3 trucks for the most demanding lifting applications. These are compatible with Class 6-8 trucks.

## AKMS16, KMS16 & KMS30 MODELS

Knapheide AKMS16 and KMS16 trucks are equipped with an electric crane, while KMS30 trucks have the option of either an electric or hydraulic crane for lifting applications. Both are compatible with Class 3-5 trucks.

## POPULAR VOCATIONS



HEAVY  
CONSTRUCTION



AGRICULTURE



PREVENTATIVE  
MAINTENANCE



OIL/MINING/GAS



**A. DOUBLE paneled doors**  
on steel models made of 20-gauge galvalume steel. Aluminum models feature box structure design of 5052 Aluminum

**B. 3-POINT T-HANDLE LATCHES**  
ensure your compartment doors stay closed and are individually lockable

**C. MASTER LOCKING SYSTEM**  
locks down all compartments on one side with one motion

**D. Knapliner BUMPER**  
provides work surface with lockable through compartment, a vise plate, and two grip strut flex steps

**E. HEAVY DUTY ALUMINUM GRAB HANDLES**  
installed on both sides at rear of the body for easy cargo area access

**F. INTEGRATED LED S/T/T AND B/U, LED STROBES**  
with (8) selectable patterns and built-in reflectivity mounted to external rear light boxes made of UV-resistant ABS material

**G. 16" HIGH DOUBLE PANEL SLAM TAILGATE**  
with center latch and flat space for displaying company graphics

**H. CAB PROTECTOR**  
welded-on with fully punched window for visibility  
*\*Knapliner applied on AKMT1*

**I. (4) LED 3000 LUMEN WORK LIGHTS**  
installed (2 at front, 2 at rear) for low-light working conditions

**J. HYDRAULIC OUTRIGGERS**  
out-and-down curb side and hydraulic down street side for crane stability during lifting operations

**K. 55,000 FT-LB. CRANE**  
with 21' hydraulic reach, provided by a two-stage hydraulic extension (AKMT1, KMT1)

**66,000 FT-LB. CRANE**  
with 21' hydraulic reach, provided by a two-stage hydraulic extension (KMT2)

**70,000 FT-LB. CRANE**  
with 30' hydraulic reach, provided by a two-stage hydraulic extension (KMT3)

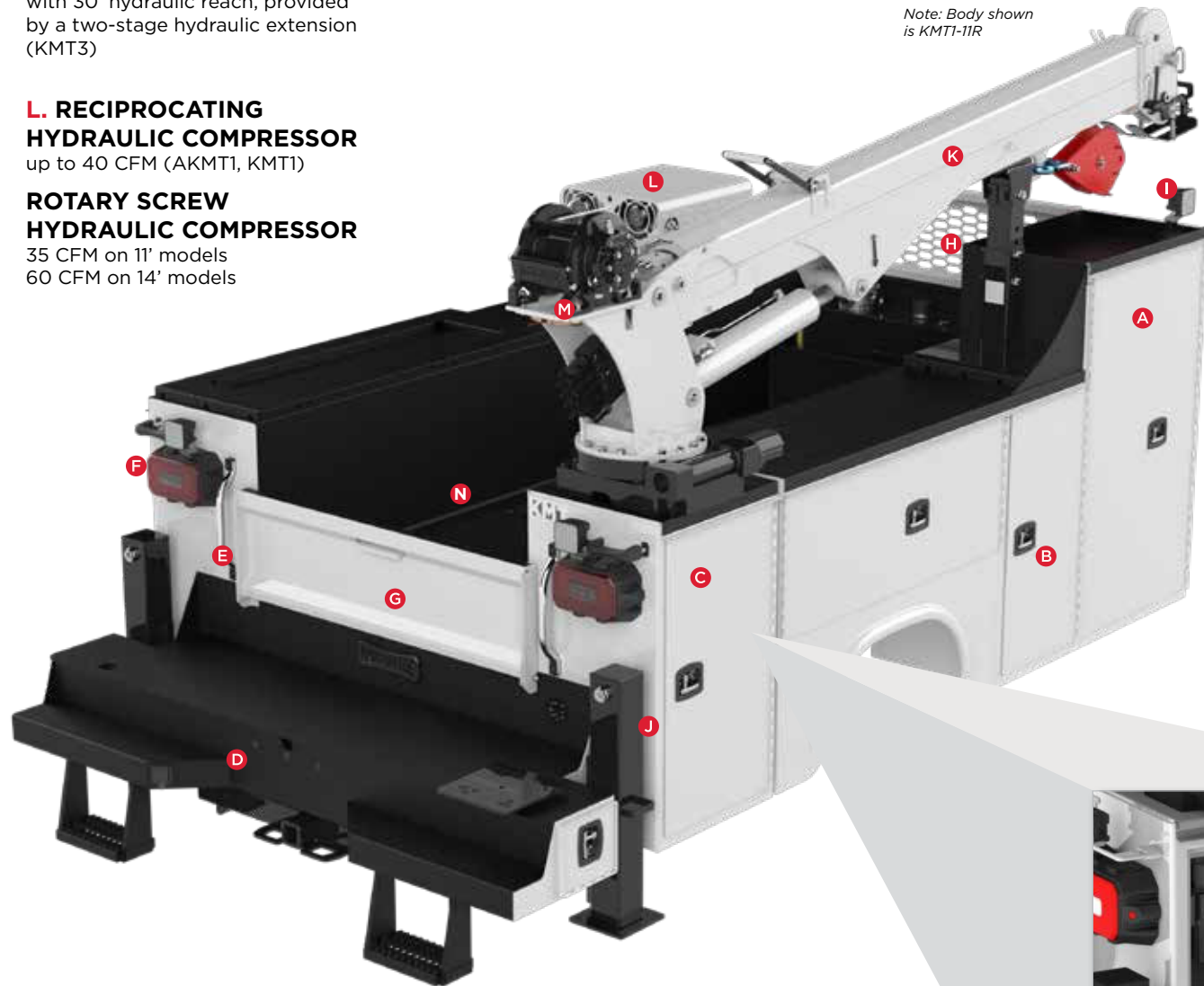
**L. RECIPROCATING HYDRAULIC COMPRESSOR**  
up to 40 CFM (AKMT1, KMT1)

**ROTARY SCREW HYDRAULIC COMPRESSOR**  
35 CFM on 11' models  
60 CFM on 14' models

**M. PLANETARY WINCH**  
provides a 60 ft. per minute single line speed

**N. Knapliner**  
applied to cargo area floor, sides, compartment tops, bulkhead, bumper and tailgate for durability

*Note: Body shown is KMT1-11R*



## FEATURES NOT SHOWN

**SMALL PART STORAGE CONTAINERS**  
in horizontal compartment on street side

**ALUMINUM MECHANIC 7-DRAWER SET**  
Extreme duty aluminum mechanic 7-drawer set on street side

**MULTI-FUNCTION RADIO REMOTE CONTROL**  
provides convenient complete control of the crane

**ELECTRODEPOSITION PRIME-PAINT SYSTEM**  
provides superior corrosion resistance

**(6) D-RING CARGO TIE DOWNS**  
each D-ring provides a 2,000 lb. working load capacity

**REINFORCED COMPARTMENT BOTTOMS AND END PANELS**  
Steel models feature 12-gauge panels. Aluminum models feature raised "sweep out" bottom panels

**Knapheide's WATER-BASED UNDERCOAT**  
Bodies are fully protected with Knapheide's water-based undercoat

**3/16" TREAD PLATE FLOOR**  
provides traction for safety  
*\*10-gauge smooth steel flooring on AKMT1*

## COMPARTMENT FEATURES



**DOUBLE-SPRING OVER-CENTER RETAINER**  
on vertical compartment doors eliminate involuntary swing  
*\*Aluminum models feature nitrogen strut door retainers*



**NEOPRENE DOOR SEALS**  
protect compartments from the weather



**ADJUSTABLE DIVIDER SHELVES**  
250-lb. capacity



**CONTINUOUS STAINLESS STEEL HINGES**  
are pry-proof and corrosion-resistant  
*\*Aluminum models feature aluminum hinge with stainless steel rod*

## CRANE COMPARTMENT



**50' X 1/2" COMPRESSOR HOSE REEL AND ROLLER FAIRLEAD**  
through curb side vertical compartment



**POLYETHYLENE FORMED DRIP PAN WITH DRAIN HOSE**  
placed under the crane manages water intrusion through the crane pedestal



**Knapheide CONTROLLER**  
10 output system features two displays for user interface points of control. CAN bus system with continuous working load of 115 amps features built-in overload current protection for system and operator safety

**A. CRANE COMPARTMENT**  
KMS16: crane reinforcement kit (CRK)  
AKMS16, KMS30: isolated crane pedestal

**B. DOUBLE PANELED DOORS**  
on steel models made of 20-gauge galvalume steel. Aluminum models feature box structure design of 5052 Aluminum

**C. 3-POINT T-HANDLE LATCHES**  
ensure your compartment doors stay closed and are individually lockable

**D. MASTER LOCKING SYSTEM**  
locks down all compartments on one side with one motion

**E. KNAPLINER BUMPER**  
provides versatile work space on a flat surface

**F. INTEGRATED LED S/T/T AND B/U, LED STROBES**  
with (8) selectable patterns and built-in reflectivity mounted to external rear light boxes made of UV-resistant ABS material

**G. DOUBLE PANEL SLAM TAILGATE**  
with center latch and flat space for displaying company graphics

**H. CAB PROTECTOR**  
welded on with fully punched window for visibility  
*\*Knapliner applied on AKMS16*

**I. (4) LED 3000 LUMEN WORK LIGHTS**  
installed for low-light working conditions

**J. HEAVY DUTY ALUMINUM GRAB HANDLES**  
installed on both sides at rear of the body for easy cargo area access

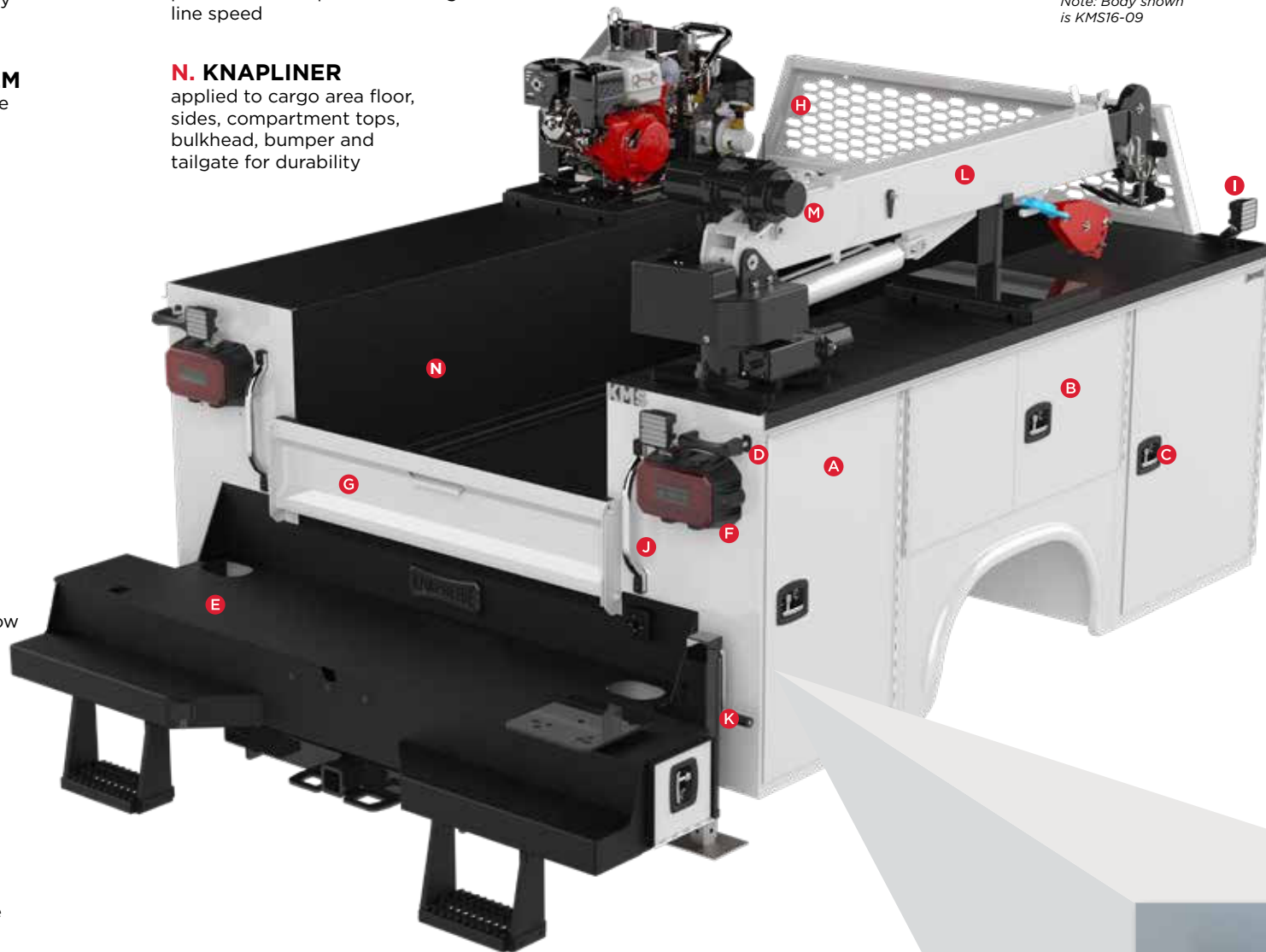
**K. (1) MANUAL OUTRIGGER**  
for crane stability during lifting operations

**L. UP TO 16,000 FT-LB. CRANE**  
with 20' reach (AKMS16, KMS16)

**UP TO 38,000 FT-LB. CRANE**  
with 21' reach (KMS30)

**M. PLANETARY WINCH**  
provides a 15 ft. per minute single line speed

**N. KNAPLINER**  
applied to cargo area floor, sides, compartment tops, bulkhead, bumper and tailgate for durability



Note: Body shown is KMS16-09

COMPARTMENT FEATURES



**DOUBLE-SPRING OVER-CENTER RETAINER**  
on vertical compartment doors eliminate involuntary swing  
*\*Aluminum models feature nitrogen strut door retainers*



**NEOPRENE DOOR SEALS**  
protect compartments from the weather



**ADJUSTABLE DIVIDER SHELVES**  
250-lb. capacity



**CONTINUOUS STAINLESS STEEL HINGES**  
are pry-proof and corrosion-resistant  
*\*Aluminum models feature aluminum hinge with stainless steel rod*



**POLYETHYLENE FORMED DRIP PAN WITH DRAIN HOSE**  
placed under the crane manages water intrusion through the crane pedestal

FEATURES NOT SHOWN

**SMALL PART STORAGE CONTAINERS**  
in second horizontal compartment on street side

**ALUMINUM MECHANIC 6-DRAWER SET**  
Extreme duty aluminum mechanic 6-drawer set on street side

**D-RING CARGO TIE DOWNS**  
Each D-ring provides a 2,000 lb. working load capacity (4 in 9" and 6 in 11")

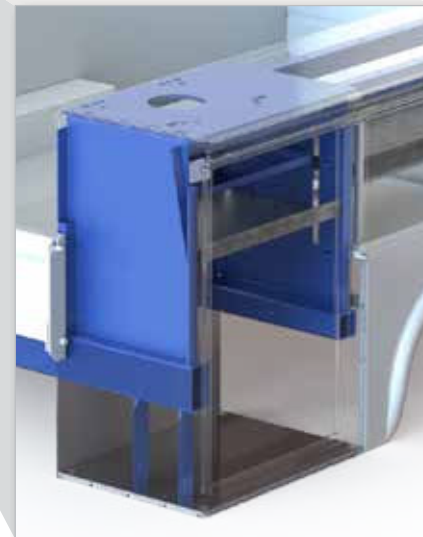
**KNAPHEIDE'S WATER-BASED UNDERCOAT**  
Bodies are fully protected with Knapheide's water-based undercoat

**ELECTRODEPOSITION PRIME-PAINT SYSTEM**  
provides superior corrosion resistance

**TORSION BOX SUBFRAME**  
Full-length

**REINFORCED COMPARTMENT BOTTOMS AND END PANELS**  
Steel models feature 14-gauge panels. Aluminum models feature raised "sweep out" bottom panels

**1/8" TREAD PLATE FLOOR**  
provides traction for safety  
*\*10-gauge smooth steel flooring on AKMS16*



CRANE COMPARTMENT

**KMS16 OFFERS A: CRANE REINFORCEMENT KIT**  
allows you to incorporate a crane up to 4,000 lb. capacity (16,000 ft-lb. max.) onto the rear curb side corner of your body as shown on KMS16.





REQUEST A QUOTE



Visit [knapheide.com/quote](https://knapheide.com/quote) and fill out the form to receive a quote and additional product information.

POPULAR OPTIONS



AUXILIARY LIGHTING



WELDER



LED COMPARTMENT LIGHTS



CARGO COVER



ADDITIONAL MECHANIC DRAWERS



STEEL MECHANIC DRAWERS



APU UNIT



LUBE SKID

MODEL OPTIONS

AKMT1, KMT1, KMT2 & KMT3

MODEL	GVWR MIN./RANGE	BUMPER	BODY LENGTH	BODY MATERIAL	COMPARTMENT HEIGHT	COMPARTMENT DEPTH	CARGO AREA WIDTH	TOPS & BACKS	REAR HITCH
AKMT1-11	19,500	21" with step down	11'	Aluminum	44", 60" raised front option	22"	50"	1/8" smooth steel	2.5" receiver tube below bumper
KMT1-11				Steel					
KMT2-11	26,000	24" with step down	11'	Steel	60"	22"	50"	1/8" smooth steel	Pintle mount plate below bumper
KMT2-13	26,000	24" with step down	11'	Steel	60"	22"	50"	1/8" smooth steel	Pintle mount plate below bumper
KMT2-14	26,000	24" with step down	11'	Steel	60"	22"	50"	1/8" smooth steel	Pintle mount plate below bumper
KMT3-14	33,000+	28" with step down	11'	Steel	60"	22"	50"	1/8" smooth steel	Pintle mount plate below bumper

AKMS16, KMS16 & KMS30

MODEL	GVWR MIN./RANGE	MAXIMUM CRANE	BUMPER	BODY LENGTH	BODY MATERIAL	COMPARTMENT HEIGHT	COMPARTMENT DEPTH	CARGO AREA WIDTH	REAR HITCH
AKMS16-9	13,300-19,500	16,000 ft.-lb.	21" with outrigger tube	9'	Aluminum	44", 60" raised front option	22"	50"	2.5" receiver tube below bumper
KMS16-9					Steel				
AKMS16-11	13,300-19,500	16,000 ft.-lb.	21" with outrigger tube	11'	Aluminum	44", 60" raised front option	22"	50"	2.5" receiver tube below bumper
KMS16-11					Steel				
KMS30-11	15,000-19,500	38,000 ft.-lb.	12" with outrigger tube	11'	Steel	44", 60" raised front option	22"	50"	2.5" receiver tube below bumper

*\*AKMT/AKMS are installed packages only*

KNAPHEIDE ALUMINUM MECHANICS TRUCKS ARE THE ANSWER TO YOUR PAYLOAD NEEDS

AKMS16-09 has weight reduction of approximately 530 lbs.\*  
AKMS16-11 has weight reduction of approximately 650 lbs.\*  
AKMT1-11 has weight reduction of approximately 1,000 lbs.\*

*\*compared to Steel KMS & KMT models*

BODY WEIGHT SAVINGS = INCREASED PAYLOAD





# COMMITMENT TO CORROSION RESISTANCE

Corrosion won't be a concern when you buy quality Knapheide products. To give you the best corrosion protection, we utilize a state-of-the-art, custom-designed, 12-step, SST cathodic electrodeposition finishing system, called "E-Coat."

It bonds prime paint to steel by an electroplating process to give you a superior coat of primer, resulting in better corrosion protection compared to spraying methods.

This system allows us to create products with the highest level of corrosion resistance available.



FOLLOW US  
LIKE US  
TAG US



**SIX YEAR, LIMITED  
TIME WARRANTY ON  
STEEL MECHANICS TRUCKS**

**TEN YEAR, LIMITED  
TIME WARRANTY ON  
ALUMINUM MECHANICS TRUCKS**



**NO RUST THROUGH**



**DOOR HINGES  
WILL NOT FAIL OR  
COME OFF BODY**



**LATCHES AND LOCK  
CYLINDERS WILL NOT  
FAIL TO OPERATE**



**SHELVES WILL NOT  
BEND UNDER MAX.  
LOAD OF 250 LBS.**

TO LEARN MORE VISIT  
[www.knapheide.com/warranty](http://www.knapheide.com/warranty)





## NEVER SETTLE

If you are going to be a leader, it takes more than building a high-quality product. It means never being totally satisfied with that product, no matter how high quality it may be. It requires constant vigilance and a willingness to take a chance on something new. And it means exceeding expectations every time. As the industry changes, one thing never will—our commitment to making customers like you as productive and efficient as possible. We know you don't settle, and we don't either. That's why we want you never to settle for anything less than Knapheide on the back of your truck.

**KNAPHEIDE. NEVER SETTLE.**



The Knapheide Manufacturing Company  
1848 Westphalia Strasse | Quincy, IL 62305

**217-222-7131**

**[www.knapheide.com](http://www.knapheide.com)**