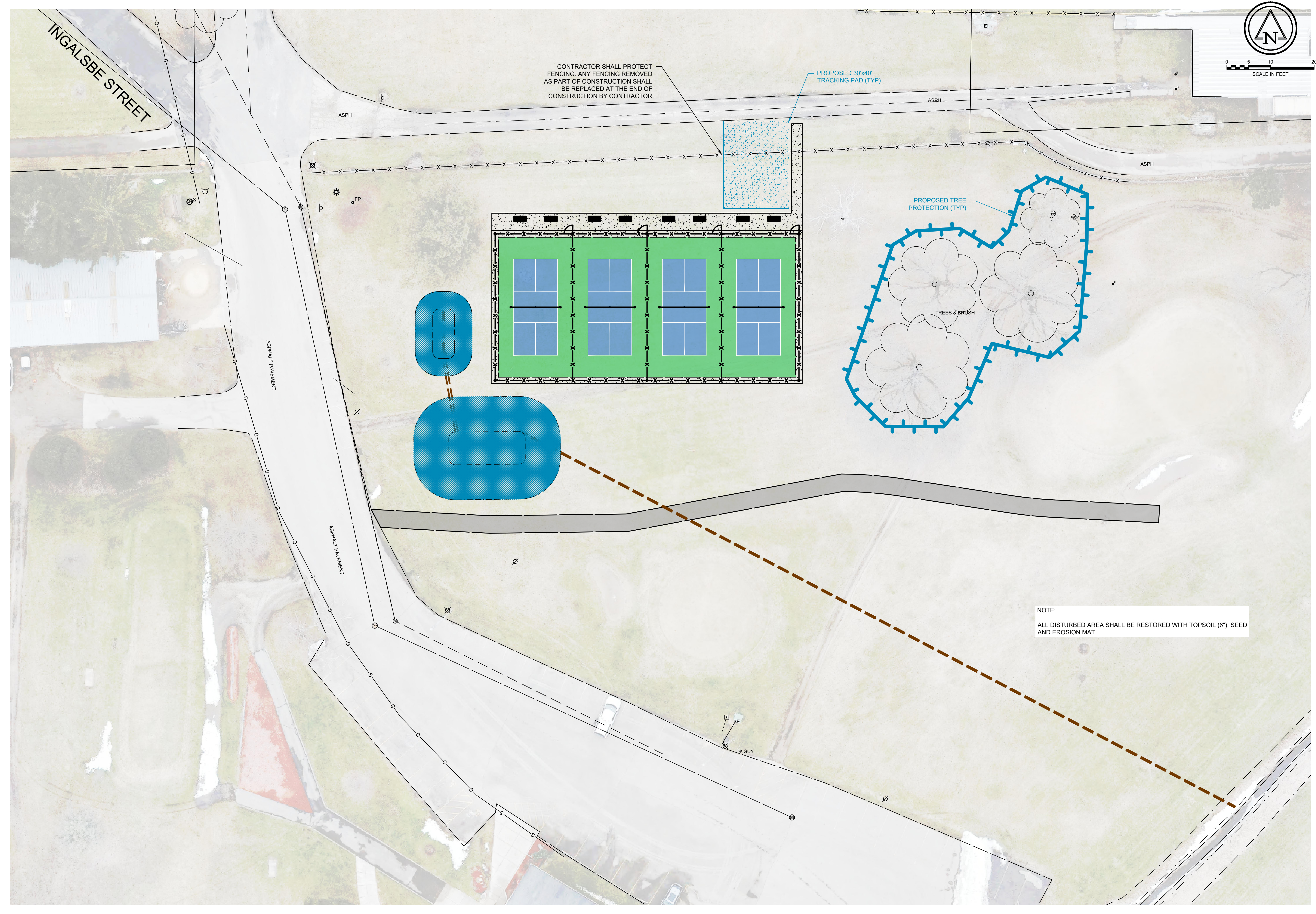


Apr 06, 2026 10:49am PLOTTED BY: Bhdhmann SAVED BY: Bhdhmann
 IMAGES: 20260217 Fireman's Park Pickleball_LCW_RES_7897;
 USER: Bhdhmann; R:\Projects\2026\20260217 Fireman's Park Pickleball; Jobname: EC-01;
 C:\Users\Bhdhmann\Documents\2026\20260217 Fireman's Park Pickleball; Project Files\Civil\Sheets\Zeph-Erosion Control Plan-01.dwg



9	8	7	6	5	4	3	2	1
A	B	C	D	E	F	G	H	I

Ruekert • Mielke
 Waukesha • Kenosha • Madison
 Global Water Center • Fox Valley
www.ruekertmielke.com

FIREMAN'S PARK PICKLEBALL COURTS
PROPOSED EROSION CONTROL PLAN
 CITY OF COLUMBUS
 COLUMBIA COUNTY, WISCONSIN

© COPYRIGHT 2026
 RUEKERT & MIELKE INC.
 DESIGNED BY: HFJ
 DRAFTED BY: BWH
 CHECKED BY: SAB
 DATE: APRIL, 2026
 FILE NO.
8117-10111

SHEET NO.
EC-01

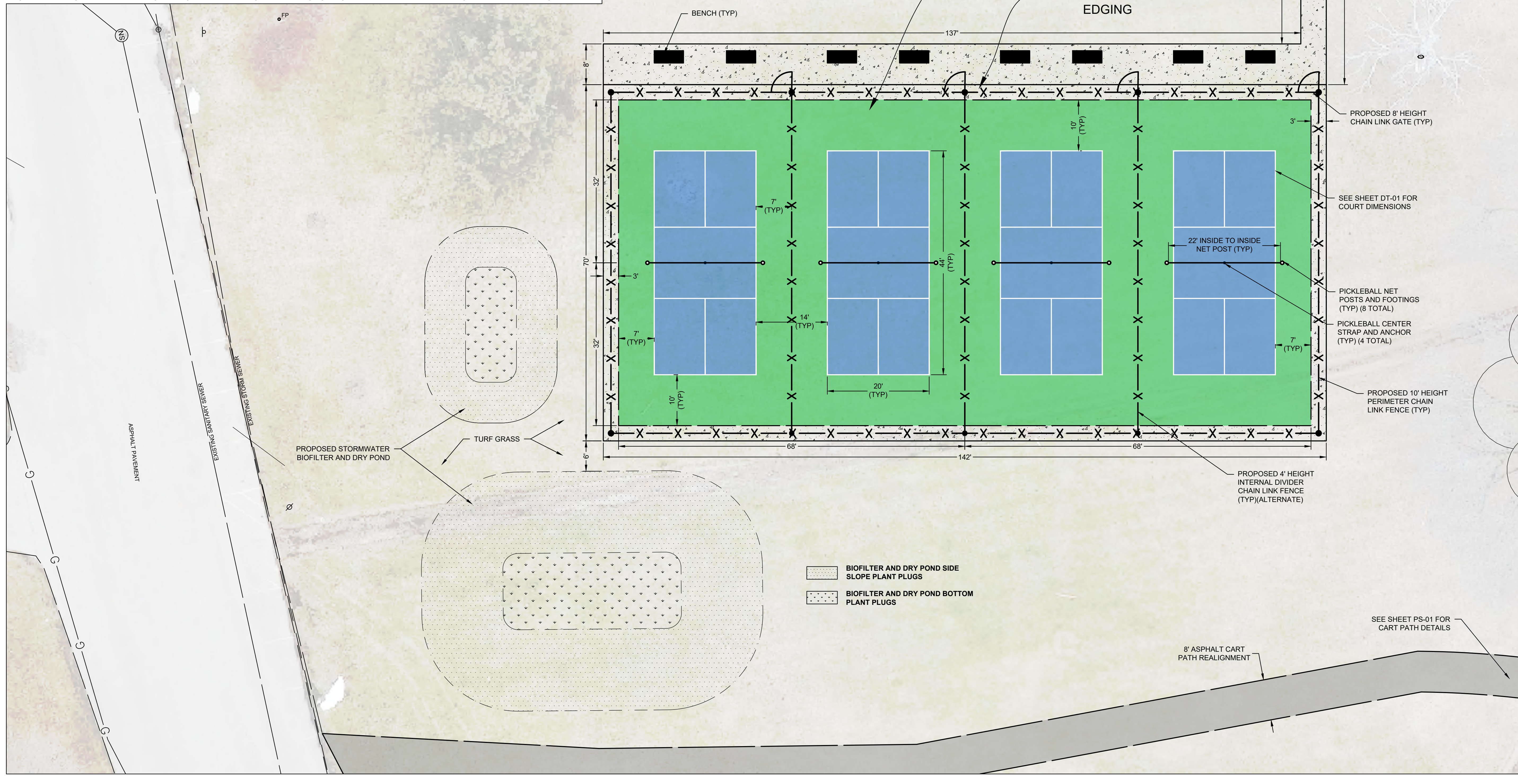
www.ruekertmielke.com

DRAFT

Apr 06, 2026 10:49am PLOTTED BY: Bhdhmann SAVED BY: Bhdhmann
 IMAGES: 20260217 Fireman's Park Pickleball_L0V_RES_7897
 C:\Users\Bhdhmann\Documents\Projects\2026\20260217 Fireman's Park Pickleball_L0V_RES_7897.dwg
 C:\Users\Bhdhmann\Documents\Projects\2026\20260217 Fireman's Park Pickleball_L0V_RES_7897.dwg

ID	QTY.	COMMON NAME	BOTANICAL NAME	SIZE	SPACING
BIOFILTER AND DRY POND BOTTOM					
AI	35	SWAMP MILKWEED	ASCLEPIAS INCARNATA	32S PLUG	18" O.C.
CG	35	TURTLEHEAD	CHELONE GLABRA	32S PLUG	18" O.C.
LP	35	PRAIRIE BLAZINGSTAR	LIATRIS PYCNOSTACHYA	32S PLUG	18" O.C.
RH	35	BLACK-EYED SUSAN	RUDBECKIA HIRTA	32S PLUG	18" O.C.
PI	35	WILD QUININE	PARTHENIUM INTEGRIFOLIUM	32S PLUG	18" O.C.
PD	35	SMOOTH PENSTEMON	PENSTEMON DIGITALIS	32S PLUG	18" O.C.
CC	35	BOTTLEBRUSH SEDGE	CAREX COMOSA	32S PLUG	18" O.C.
CV	35	FOX SEDGE	CAREX VULPINOIDEA	32S PLUG	18" O.C.
EV	35	VIRGINIA WILD RYE	ELYMUS VIRGINICUS	32S PLUG	18" O.C.
PV	35	SWITCHGRASS	PANICUM VIRGATUM	32S PLUG	18" O.C.
BIOFILTER AND DRY POND SIDE SLOPES					
AA	120	SKY BLUE ASTER	ASTER AZUREUS	32S PLUG	18" O.C.
AL	120	SMOOTH ASTER	ASTER LAEVIS	32S PLUG	18" O.C.
DP	120	PURPLE PRAIRIE CLOVER	DALEA PURPUREA	32S PLUG	18" O.C.
EP	120	PALE PURPLE CONEFLOWER	ECHINACEA PALLIDA	32S PLUG	18" O.C.
EC	120	PURPLE CONEFLOWER	ECHINACEA PURPUREA	32S PLUG	18" O.C.
LP	120	PRAIRIE BLAZINGSTAR	LIATRIS PYCNOSTACHYA	32S PLUG	18" O.C.

NOTE: DISTRIBUTE PLANTS RANDOMLY SO THAT ALL SPECIES ARE PROPORTIONALLY REPRESENTED IN BIOFILTER AND DRY POND.



2026-04-06 10:49:11 AM

DRAFT

1	2	3	4	5	6	7	8	9	10	11	12	13	14	15	16	17	18	19	20
---	---	---	---	---	---	---	---	---	----	----	----	----	----	----	----	----	----	----	----

Ruekert • Mielke

Waukesha • Kenosha • Madison
Global Water Center • Fox Valley
www.ruekertmielke.com

FIREMAN'S PARK PICKLEBALL COURTS

SITE PLAN AND LANDSCAPE PLAN

CITY OF COLUMBUS
COLUMBIA COUNTY, WISCONSIN

© COPYRIGHT 2026
RUEKERT & MIELKE INC.

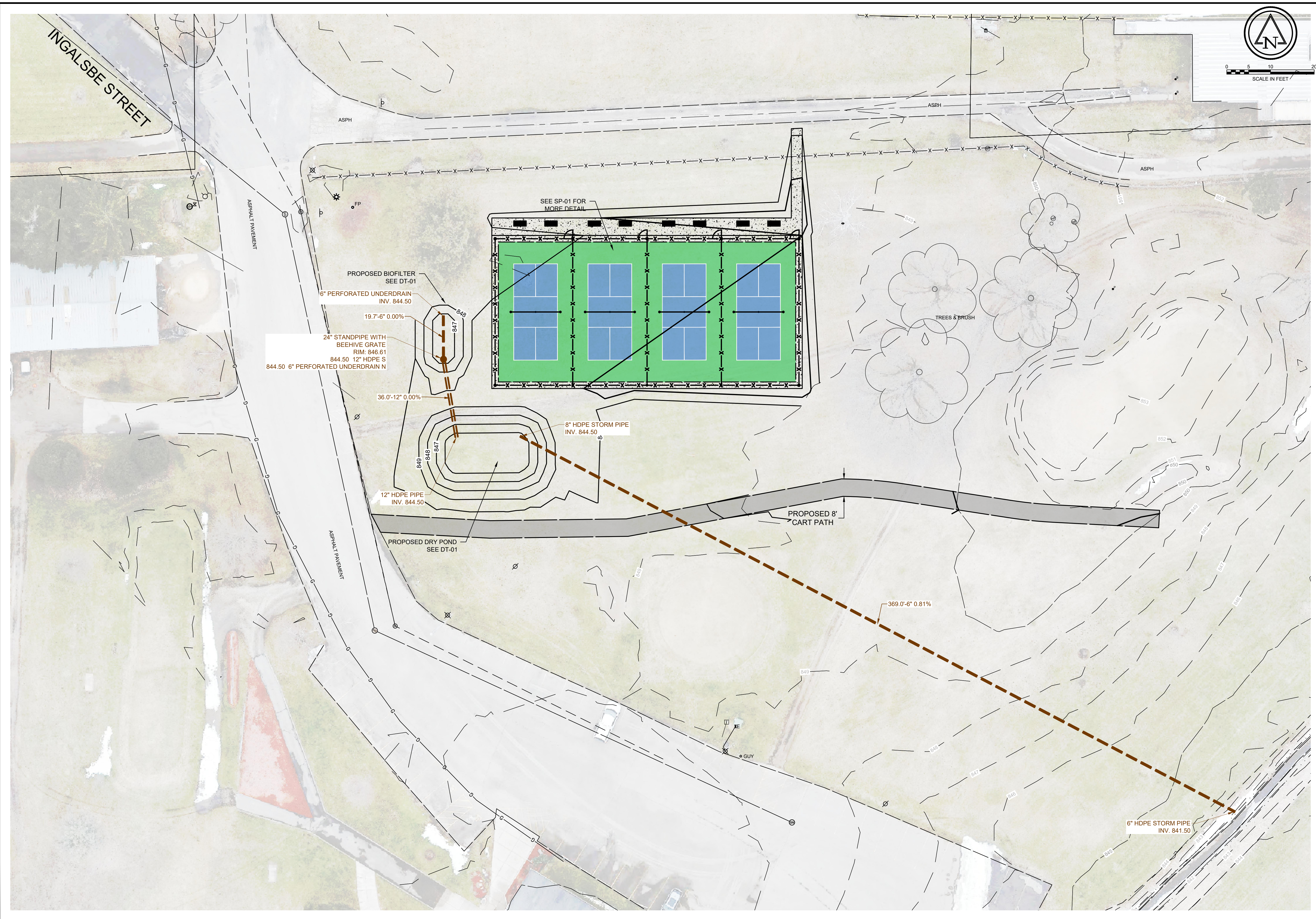
DESIGNED BY: HFJ
DRAFTED BY: BWH
CHECKED BY: SAB
DATE: APRIL, 2026

FILE NO.
8117-10111

SHEET NO.
SP-01

SEE SHEET PS-01 FOR
CART PATH DETAILS

Apr 06, 2026 10:49am PLOTTED BY: Bhdhmann SAVED BY: Bhdhmann
 IMAGES: 20260217 Fireman's Park Pickleball_Low RES_7597; 20260217 Fireman's Park Pickleball_Low RES_7597;
 USER: Bhdhmann; RVT: Bhdhmann; PROJECT: Fireman's Park Pickleball; JOBNO: 20260217; SHEET: PS-01; SCALE: 1"=10';
 C:\Users\Bhdhmann\Documents\Projects\2026\20260217 Fireman's Park Pickleball\Drawings\Storm Sewer\Plan-01.dwg

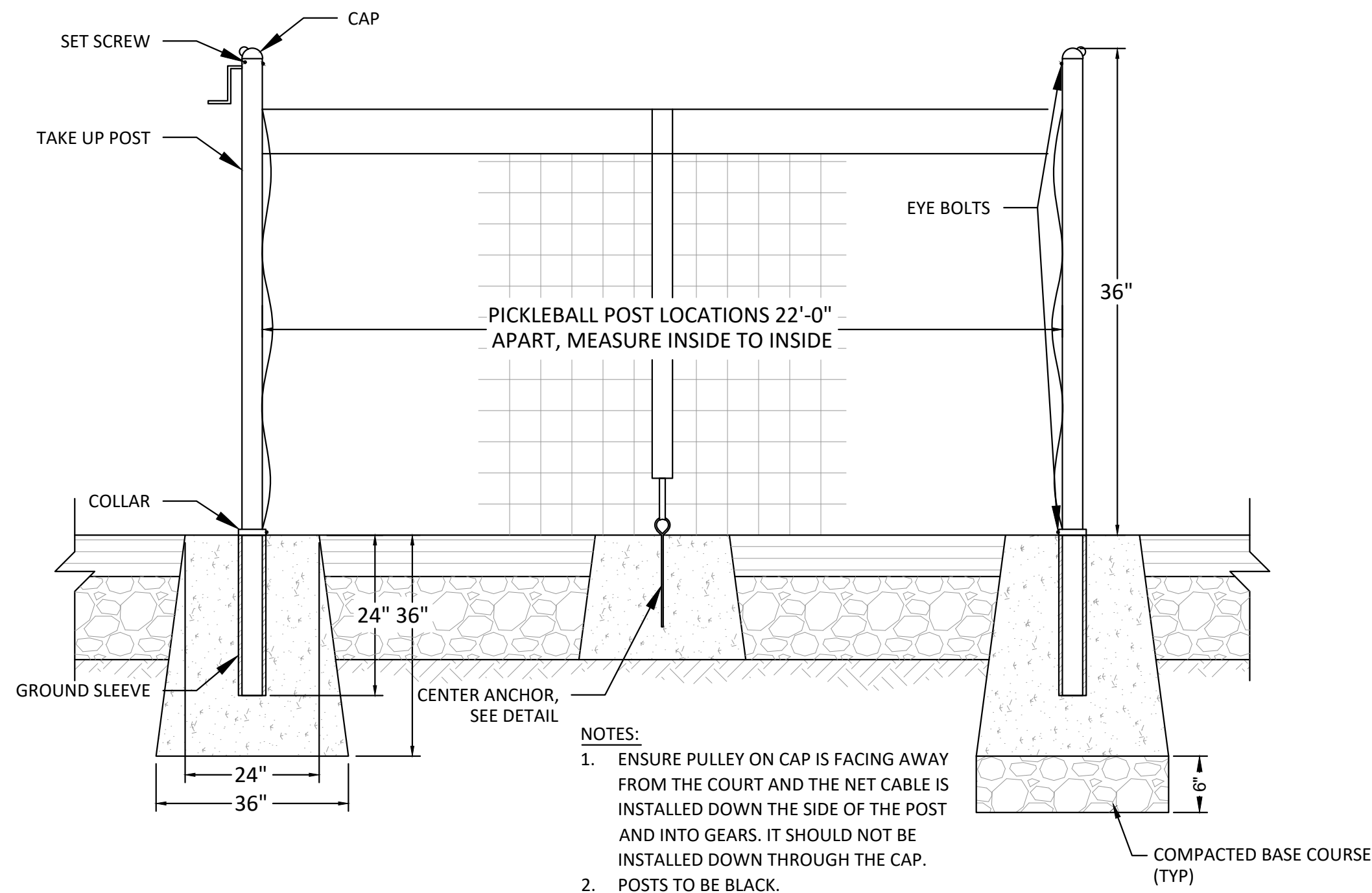


 Waukesha • Kenosha • Madison Global Water Center • Fox Valley www.ruekertmielke.com
FIREMAN'S PARK PICKLEBALL COURTS PROPOSED PAVEMENT AND STORM SEWER PLAN CITY OF COLUMBUS COLUMBIA COUNTY, WISCONSIN
© COPYRIGHT 2026 RUEKERT & MIELKE INC. DESIGNED BY: HFJ DRAFTED BY: BWH CHECKED BY: SAB DATE: APRIL, 2026 FILE NO. 8117-10111
SHEET NO. PS-01

DRAFT
www.ruekertmielke.com



THOMAS STEELE DIVISION
 GRABER MANUFACTURING, INC.
 1080 UNIEK DRIVE
 WAUNAKEE, WI 53597
 P(800) 448-7931, P(608) 849-1080, F(608) 849-1081
 WWW.MADRAX.COM, E-MAIL: SALES@MADRAX.COM



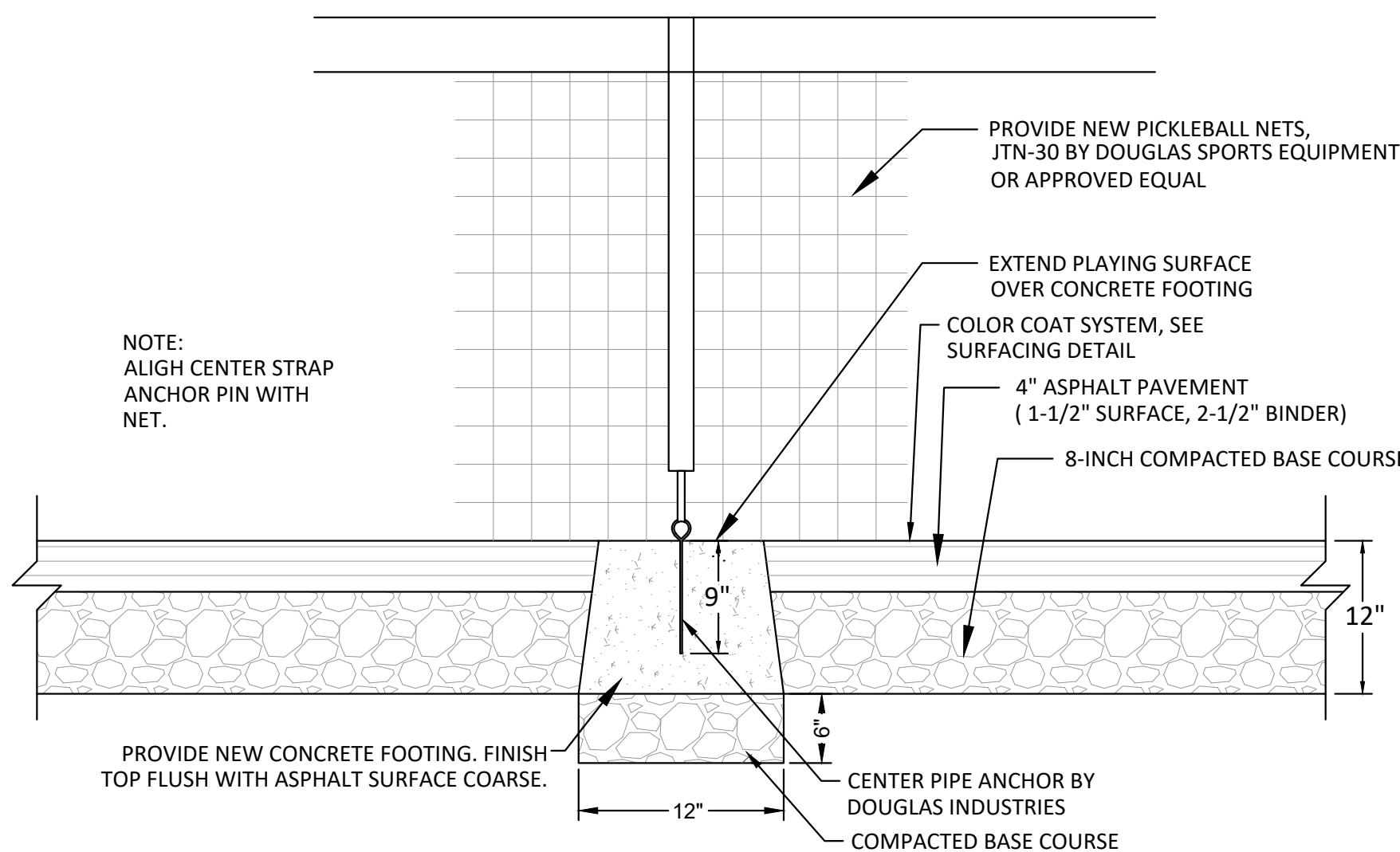
- NOTES:
1. ENSURE PULLEY ON CAP IS FACING AWAY FROM THE COURT AND THE NET CABLE IS INSTALLED DOWN THE SIDE OF THE POST AND INTO GEARS. IT SHOULD NOT BE INSTALLED DOWN THROUGH THE CAP.
 2. POSTS TO BE BLACK.

POST AND ANCHOR INSTALLATION

1. WHEN INSTALLING POST, USE BOTTOM COLLAR TO ENSURE POST HEIGHT.
2. POSTS SHOULD BE SPACED 22' APART (MEASURED INSIDE-TO-INSIDE).
3. DIRECT GROUND INSTALLATION - ANCHOR EACH POST IN A BLOCK OF CONCRETE AS SHOWN IN THE DIAGRAM. POUR THE CONCRETE INTO A BELL-SHAPED HOLE 24" IN DIAMETER AT THE TOP AND 30" IN DIAMETER AT THE BOTTOM. MAKE THE HOLE AT LEAST 36" DEEP.
4. GROUND SLEEVE INSTALLATION - WHILE POURING THE CONCRETE HOLD THE GROUND SLEEVE IN PLACE, PLUGGED END DOWN. USE A PLUMB LINE TO SET THE SLEEVE POINTING STRAIGHT UP. SLEEVE SHOULD BE SET FLUSH WITH THE SURFACE. LET CONCRETE DRY. CAREFULLY SET THE POST IN GROUND SLEEVES.
5. ADJUST SET SCREW TO TIGHTEN PICKLEBALL POST CAP.
6. SCREW ON THE TOP AND BOTTOM EYEBOLTS TO EACH POST.
7. CENTER ANCHOR - THE CENTER ANCHOR SHOULD BE 11' AWAY FROM EACH POST.
8. FOR CENTER ANCHOR, POUR CONCRETE INTO A BELL SHAPED HOLE 9" IN DIAMETER AT THE TOP AND 12" IN DIAMETER AT THE BOTTOM. THE HOLE SHOULD BE 12" DEEP. WHILE POURING, HOLD THE ANCHOR IN PLACE, WITH THE NARROWED END DOWN. MAKE SURE THE ANCHOR IS FLUSH WITH THE SURFACE AND PIN IS PARALLEL TO THE NET LINE. LET CONCRETE DRY.

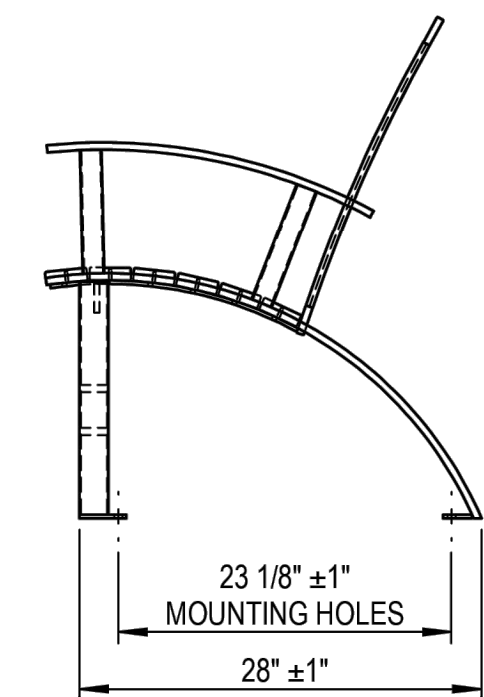
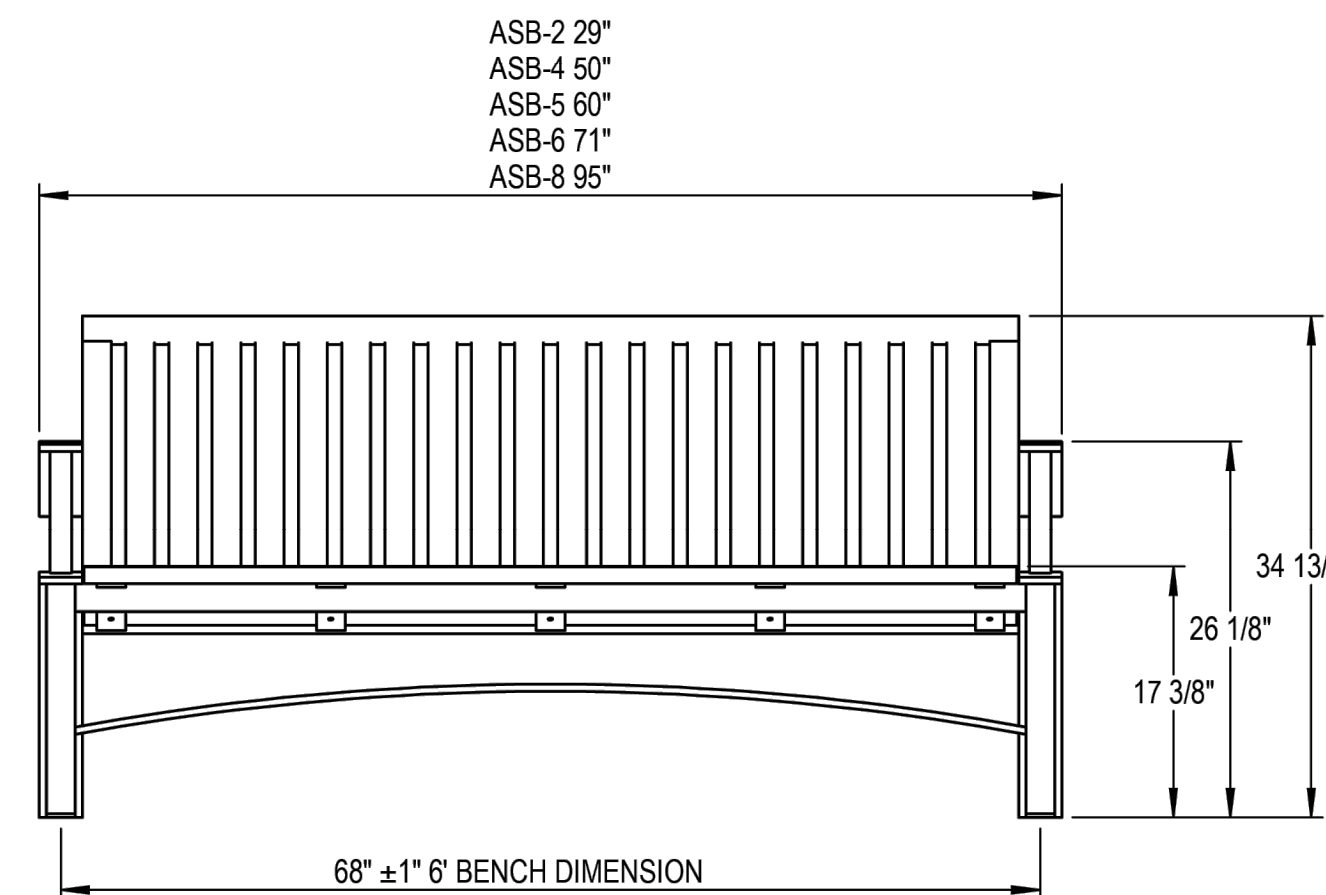
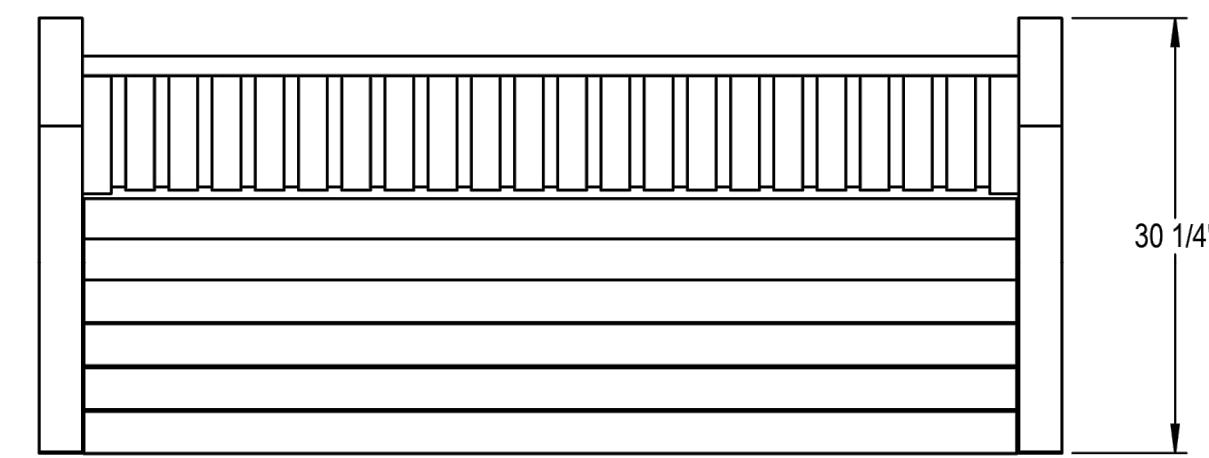
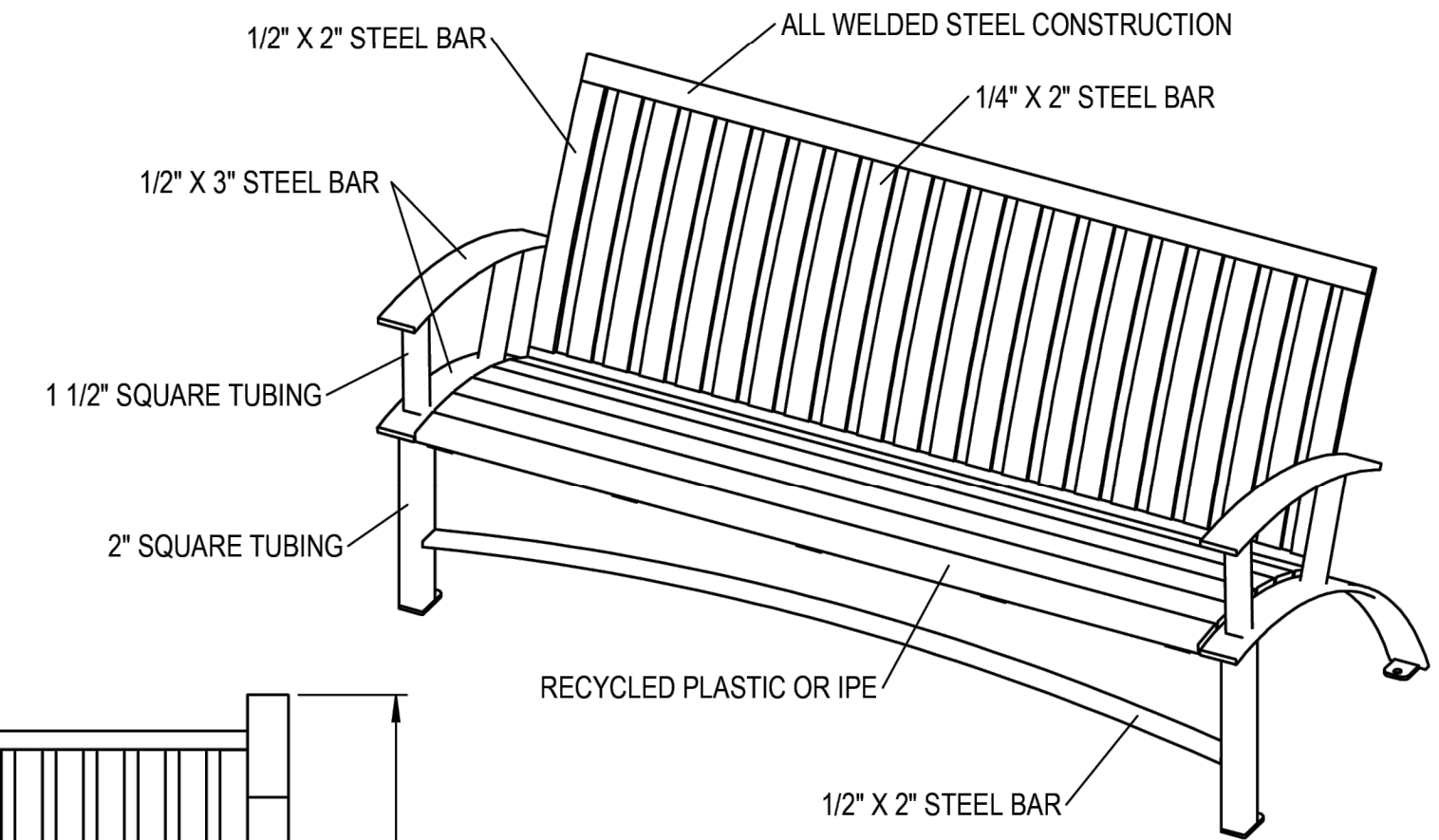
PICKLEBALL NET POST FOOTING NO SCALE

REC-PB 1



CENTER STRAP ANCHOR FOOTING NO SCALE

REC-PB 1



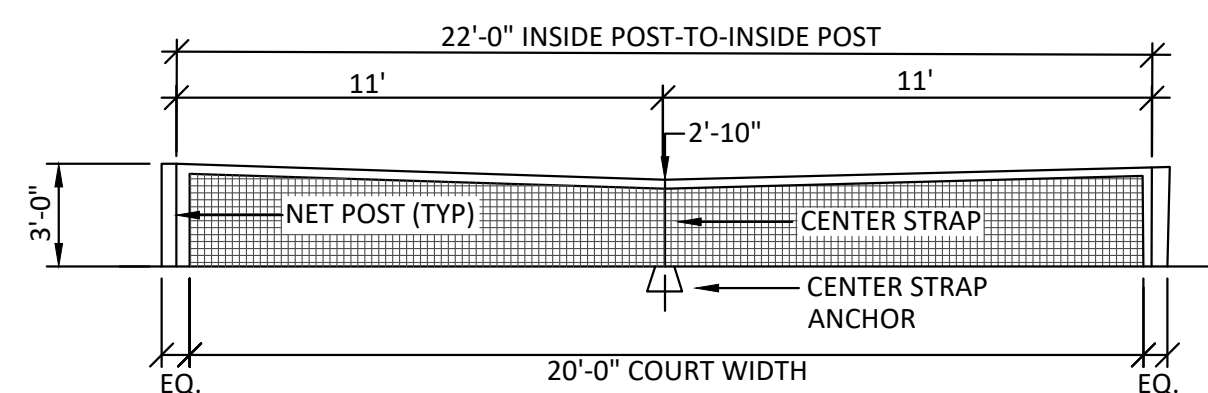
PRODUCT: ASB-L(2, 4, 5, 6, 8)
 DESCRIPTION: ASHTON BENCH 2, 4, 5, 6, 8 FT

DATE: 1-30-20
 ENG: BLW

CONFIDENTIAL DRAWING AND INFORMATION IS NOT TO BE COPIED OR DISCLOSED TO OTHERS WITHOUT THE CONSENT OF GRABER MANUFACTURING, INC. SPECIFICATIONS ARE SUBJECT TO CHANGE WITHOUT NOTICE.

©2020 GRABER MANUFACTURING, INC. ALL PROPRIETARY RIGHTS RESERVED.

SITE FURNISHING IS POWDER COATED WITH TGIC POLYESTER. STEEL SURFACE PREP INCLUDES MECHANICAL AND CHEMICAL ETCHING FOLLOWED WITH A COATING TO IMPROVE ADHESION AND CORROSION RESISTANCE.



PICKLEBALL NET ELEVATIONS NO SCALE

REC-PB 1

Apr 06, 2026 10:50am PLOTTED BY: Bhdhmann SAVED BY: Bhdhmann FIREMAN'S PARK PICKLEBALL COURTS 3382626980.
 IMAGES: 25 - 19 Mallette Park Pickleball Courts, 3382626980; 25 - 19 Mallette Park Pickleball Courts 3382626980; REC-PC-01; REC-PC-02; REC-PC-03; REC-PC-04; REC-PC-05; REC-PC-06; REC-PC-07; REC-PC-08; REC-PC-09; REC-PC-10; REC-PC-11; REC-PC-12; REC-PC-13; REC-PC-14; REC-PC-15; REC-PC-16; REC-PC-17; REC-PC-18; REC-PC-19; REC-PC-20; REC-PC-21; REC-PC-22; REC-PC-23; REC-PC-24; REC-PC-25; REC-PC-26; REC-PC-27; REC-PC-28; REC-PC-29; REC-PC-30; REC-PC-31; REC-PC-32; REC-PC-33; REC-PC-34; REC-PC-35; REC-PC-36; REC-PC-37; REC-PC-38; REC-PC-39; REC-PC-40; REC-PC-41; REC-PC-42; REC-PC-43; REC-PC-44; REC-PC-45; REC-PC-46; REC-PC-47; REC-PC-48; REC-PC-49; REC-PC-50; REC-PC-51; REC-PC-52; REC-PC-53; REC-PC-54; REC-PC-55; REC-PC-56; REC-PC-57; REC-PC-58; REC-PC-59; REC-PC-60; REC-PC-61; REC-PC-62; REC-PC-63; REC-PC-64; REC-PC-65; REC-PC-66; REC-PC-67; REC-PC-68; REC-PC-69; REC-PC-70; REC-PC-71; REC-PC-72; REC-PC-73; REC-PC-74; REC-PC-75; REC-PC-76; REC-PC-77; REC-PC-78; REC-PC-79; REC-PC-80; REC-PC-81; REC-PC-82; REC-PC-83; REC-PC-84; REC-PC-85; REC-PC-86; REC-PC-87; REC-PC-88; REC-PC-89; REC-PC-90; REC-PC-91; REC-PC-92; REC-PC-93; REC-PC-94; REC-PC-95; REC-PC-96; REC-PC-97; REC-PC-98; REC-PC-99; REC-PC-100; REC-PC-101; REC-PC-102; REC-PC-103; REC-PC-104; REC-PC-105; REC-PC-106; REC-PC-107; REC-PC-108; REC-PC-109; REC-PC-110; REC-PC-111; REC-PC-112; REC-PC-113; REC-PC-114; REC-PC-115; REC-PC-116; REC-PC-117; REC-PC-118; REC-PC-119; REC-PC-120; REC-PC-121; REC-PC-122; REC-PC-123; REC-PC-124; REC-PC-125; REC-PC-126; REC-PC-127; REC-PC-128; REC-PC-129; REC-PC-130; REC-PC-131; REC-PC-132; REC-PC-133; REC-PC-134; REC-PC-135; REC-PC-136; REC-PC-137; REC-PC-138; REC-PC-139; REC-PC-140; REC-PC-141; REC-PC-142; REC-PC-143; REC-PC-144; REC-PC-145; REC-PC-146; REC-PC-147; REC-PC-148; REC-PC-149; REC-PC-150; REC-PC-151; REC-PC-152; REC-PC-153; REC-PC-154; REC-PC-155; REC-PC-156; REC-PC-157; REC-PC-158; REC-PC-159; REC-PC-160; REC-PC-161; REC-PC-162; REC-PC-163; REC-PC-164; REC-PC-165; REC-PC-166; REC-PC-167; REC-PC-168; REC-PC-169; REC-PC-170; REC-PC-171; REC-PC-172; REC-PC-173; REC-PC-174; REC-PC-175; REC-PC-176; REC-PC-177; REC-PC-178; REC-PC-179; REC-PC-180; REC-PC-181; REC-PC-182; REC-PC-183; REC-PC-184; REC-PC-185; REC-PC-186; REC-PC-187; REC-PC-188; REC-PC-189; REC-PC-190; REC-PC-191; REC-PC-192; REC-PC-193; REC-PC-194; REC-PC-195; REC-PC-196; REC-PC-197; REC-PC-198; REC-PC-199; REC-PC-200; REC-PC-201; REC-PC-202; REC-PC-203; REC-PC-204; REC-PC-205; REC-PC-206; REC-PC-207; REC-PC-208; REC-PC-209; REC-PC-210; REC-PC-211; REC-PC-212; REC-PC-213; REC-PC-214; REC-PC-215; REC-PC-216; REC-PC-217; REC-PC-218; REC-PC-219; REC-PC-220; REC-PC-221; REC-PC-222; REC-PC-223; REC-PC-224; REC-PC-225; REC-PC-226; REC-PC-227; REC-PC-228; REC-PC-229; REC-PC-230; REC-PC-231; REC-PC-232; REC-PC-233; REC-PC-234; REC-PC-235; REC-PC-236; REC-PC-237; REC-PC-238; REC-PC-239; REC-PC-240; REC-PC-241; REC-PC-242; REC-PC-243; REC-PC-244; REC-PC-245; REC-PC-246; REC-PC-247; REC-PC-248; REC-PC-249; REC-PC-250; REC-PC-251; REC-PC-252; REC-PC-253; REC-PC-254; REC-PC-255; REC-PC-256; REC-PC-257; REC-PC-258; REC-PC-259; REC-PC-260; REC-PC-261; REC-PC-262; REC-PC-263; REC-PC-264; REC-PC-265; REC-PC-266; REC-PC-267; REC-PC-268; REC-PC-269; REC-PC-270; REC-PC-271; REC-PC-272; REC-PC-273; REC-PC-274; REC-PC-275; REC-PC-276; REC-PC-277; REC-PC-278; REC-PC-279; REC-PC-280; REC-PC-281; REC-PC-282; REC-PC-283; REC-PC-284; REC-PC-285; REC-PC-286; REC-PC-287; REC-PC-288; REC-PC-289; REC-PC-290; REC-PC-291; REC-PC-292; REC-PC-293; REC-PC-294; REC-PC-295; REC-PC-296; REC-PC-297; REC-PC-298; REC-PC-299; REC-PC-300; REC-PC-301; REC-PC-302; REC-PC-303; REC-PC-304; REC-PC-305; REC-PC-306; REC-PC-307; REC-PC-308; REC-PC-309; REC-PC-310; REC-PC-311; REC-PC-312; REC-PC-313; REC-PC-314; REC-PC-315; REC-PC-316; REC-PC-317; REC-PC-318; REC-PC-319; REC-PC-320; REC-PC-321; REC-PC-322; REC-PC-323; REC-PC-324; REC-PC-325; REC-PC-326; REC-PC-327; REC-PC-328; REC-PC-329; REC-PC-330; REC-PC-331; REC-PC-332; REC-PC-333; REC-PC-334; REC-PC-335; REC-PC-336; REC-PC-337; REC-PC-338; REC-PC-339; REC-PC-340; REC-PC-341; REC-PC-342; REC-PC-343; REC-PC-344; REC-PC-345; REC-PC-346; REC-PC-347; REC-PC-348; REC-PC-349; REC-PC-350; REC-PC-351; REC-PC-352; REC-PC-353; REC-PC-354; REC-PC-355; REC-PC-356; REC-PC-357; REC-PC-358; REC-PC-359; REC-PC-360; REC-PC-361; REC-PC-362; REC-PC-363; REC-PC-364; REC-PC-365; REC-PC-366; REC-PC-367; REC-PC-368; REC-PC-369; REC-PC-370; REC-PC-371; REC-PC-372; REC-PC-373; REC-PC-374; REC-PC-375; REC-PC-376; REC-PC-377; REC-PC-378; REC-PC-379; REC-PC-380; REC-PC-381; REC-PC-382; REC-PC-383; REC-PC-384; REC-PC-385; REC-PC-386; REC-PC-387; REC-PC-388; REC-PC-389; REC-PC-390; REC-PC-391; REC-PC-392; REC-PC-393; REC-PC-394; REC-PC-395; REC-PC-396; REC-PC-397; REC-PC-398; REC-PC-399; REC-PC-400; REC-PC-401; REC-PC-402; REC-PC-403; REC-PC-404; REC-PC-405; REC-PC-406; REC-PC-407; REC-PC-408; REC-PC-409; REC-PC-410; REC-PC-411; REC-PC-412; REC-PC-413; REC-PC-414; REC-PC-415; REC-PC-416; REC-PC-417; REC-PC-418; REC-PC-419; REC-PC-420; REC-PC-421; REC-PC-422; REC-PC-423; REC-PC-424; REC-PC-425; REC-PC-426; REC-PC-427; REC-PC-428; REC-PC-429; REC-PC-430; REC-PC-431; REC-PC-432; REC-PC-433; REC-PC-434; REC-PC-435; REC-PC-436; REC-PC-437; REC-PC-438; REC-PC-439; REC-PC-440; REC-PC-441; REC-PC-442; REC-PC-443; REC-PC-444; REC-PC-445; REC-PC-446; REC-PC-447; REC-PC-448; REC-PC-449; REC-PC-450; REC-PC-451; REC-PC-452; REC-PC-453; REC-PC-454; REC-PC-455; REC-PC-456; REC-PC-457; REC-PC-458; REC-PC-459; REC-PC-460; REC-PC-461; REC-PC-462; REC-PC-463; REC-PC-464; REC-PC-465; REC-PC-466; REC-PC-467; REC-PC-468; REC-PC-469; REC-PC-470; REC-PC-471; REC-PC-472; REC-PC-473; REC-PC-474; REC-PC-475; REC-PC-476; REC-PC-477; REC-PC-478; REC-PC-479; REC-PC-480; REC-PC-481; REC-PC-482; REC-PC-483; REC-PC-484; REC-PC-485; REC-PC-486; REC-PC-487; REC-PC-488; REC-PC-489; REC-PC-490; REC-PC-491; REC-PC-492; REC-PC-493; REC-PC-494; REC-PC-495; REC-PC-496; REC-PC-497; REC-PC-498; REC-PC-499; REC-PC-500; REC-PC-501; REC-PC-502; REC-PC-503; REC-PC-504; REC-PC-505; REC-PC-506; REC-PC-507; REC-PC-508; REC-PC-509; REC-PC-510; REC-PC-511; REC-PC-512; REC-PC-513; REC-PC-514; REC-PC-515; REC-PC-516; REC-PC-517; REC-PC-518; REC-PC-519; REC-PC-520; REC-PC-521; REC-PC-522; REC-PC-523; REC-PC-524; REC-PC-525; REC-PC-526; REC-PC-527; REC-PC-528; REC-PC-529; REC-PC-530; REC-PC-531; REC-PC-532; REC-PC-533; REC-PC-534; REC-PC-535; REC-PC-536; REC-PC-537; REC-PC-538; REC-PC-539; REC-PC-540; REC-PC-541; REC-PC-542; REC-PC-543; REC-PC-544; REC-PC-545; REC-PC-546; REC-PC-547; REC-PC-548; REC-PC-549; REC-PC-550; REC-PC-551; REC-PC-552; REC-PC-553; REC-PC-554; REC-PC-555; REC-PC-556; REC-PC-557; REC-PC-558; REC-PC-559; REC-PC-560; REC-PC-561; REC-PC-562; REC-PC-563; REC-PC-564; REC-PC-565; REC-PC-566; REC-PC-567; REC-PC-568; REC-PC-569; REC-PC-570; REC-PC-571; REC-PC-572; REC-PC-573; REC-PC-574; REC-PC-575; REC-PC-576; REC-PC-577; REC-PC-578; REC-PC-579; REC-PC-580; REC-PC-581; REC-PC-582; REC-PC-583; REC-PC-584; REC-PC-585; REC-PC-586; REC-PC-587; REC-PC-588; REC-PC-589; REC-PC-590; REC-PC-591; REC-PC-592; REC-PC-593; REC-PC-594; REC-PC-595; REC-PC-596; REC-PC-597; REC-PC-598; REC-PC-599; REC-PC-600; REC-PC-601; REC-PC-602; REC-PC-603; REC-PC-604; REC-PC-605; REC-PC-606; REC-PC-607; REC-PC-608; REC-PC-609; REC-PC-610; REC-PC-611; REC-PC-612; REC-PC-613; REC-PC-614; REC-PC-615; REC-PC-616; REC-PC-617; REC-PC-618; REC-PC-619; REC-PC-620; REC-PC-621; REC-PC-622; REC-PC-623; REC-PC-624; REC-PC-625; REC-PC-626; REC-PC-627; REC-PC-628; REC-PC-629; REC-PC-630; REC-PC-631; REC-PC-632; REC-PC-633; REC-PC-634; REC-PC-635; REC-PC-636; REC-PC-637; REC-PC-638; REC-PC-639; REC-PC-640; REC-PC-641; REC-PC-642; REC-PC-643; REC-PC-644; REC-PC-645; REC-PC-646; REC-PC-647; REC-PC-648; REC-PC-649; REC-PC-650; REC-PC-651; REC-PC-652; REC-PC-653; REC-PC-654; REC-PC-655; REC-PC-656; REC-PC-657; REC-PC-658; REC-PC-659; REC-PC-660; REC-PC-661; REC-PC-662; REC-PC-663; REC-PC-664; REC-PC-665; REC-PC-666; REC-PC-667; REC-PC-668; REC-PC-669; REC-PC-670; REC-PC-671; REC-PC-672; REC-PC-673; REC-PC-674; REC-PC-675; REC-PC-676; REC-PC-677; REC-PC-678; REC-PC-679; REC-PC-680; REC-PC-681; REC-PC-682; REC-PC-683; REC-PC-684; REC-PC-685; REC-PC-686; REC-PC-687; REC-PC-688; REC-PC-689; REC-PC-690; REC-PC-691; REC-PC-692; REC-PC-693; REC-PC-694; REC-PC-695; REC-PC-696; REC-PC-697; REC-PC-698; REC-PC-699; REC-PC-700; REC-PC-701; REC-PC-702; REC-PC-703; REC-PC-704; REC-PC-705; REC-PC-706; REC-PC-707; REC-PC-708; REC-PC-709; REC-PC-710; REC-PC-711; REC-PC-712; REC-PC-713; REC-PC-714; REC-PC-715; REC-PC-716; REC-PC-717; REC-PC-718; REC-PC-719; REC-PC-720; REC-PC-721; REC-PC-722; REC-PC-723; REC-PC-724; REC-PC-725; REC-PC-726; REC-PC-727; REC-PC-728; REC-PC-729; REC-PC-730; REC-PC-731; REC-PC-732; REC-PC-733; REC-PC-734; REC-PC-735; REC-PC-736; REC-PC-737; REC-PC-738; REC-PC-739; REC-PC-740; REC-PC-741; REC-PC-742; REC-PC-743; REC-PC-744; REC-PC-745; REC-PC-746; REC-PC-747; REC-PC-748; REC-PC-749; REC-PC-750; REC-PC-751; REC-PC-752; REC-PC-753; REC-PC-754; REC-PC-755; REC-PC-756; REC-PC-757; REC-PC-758; REC-PC-759; REC-PC-760; REC-PC-761; REC-PC-762; REC-PC-763; REC-PC-764; REC-PC-765; REC-PC-766; REC-PC-767; REC-PC-768; REC-PC-769; REC-PC-770; REC-PC-771; REC-PC-772; REC-PC-773; REC-PC-774; REC-PC-775; REC-PC-776; REC-PC-777; REC-PC-778; REC-PC-779; REC-PC-780; REC-PC-781; REC-PC-782; REC-PC-783; REC-PC-784; REC-PC-785; REC-PC-786; REC-PC-787; REC-PC-788; REC-PC-789; REC-PC-790; REC-PC-791; REC-PC-792; REC-PC-793; REC-PC-794; REC-PC-795; REC-PC-796; REC-PC-797; REC-PC-798; REC-PC-799; REC-PC-800; REC-PC-801; REC-PC-802; REC-PC-803; REC-PC-804; REC-PC-805; REC-PC-806; REC-PC-807; REC-PC-808; REC-PC-809; REC-PC-810; REC-PC-811; REC-PC-812; REC-PC-813; REC-PC-814; REC-PC-815; REC-PC-816; REC-PC-817; REC-PC-818; REC-PC-819; REC-PC-820; REC-PC-821; REC-PC-822; REC-PC-823; REC-PC-824; REC-PC-825; REC-PC-826; REC-PC-827; REC-PC-828; REC-PC-829; REC-PC-830; REC-PC-831; REC-PC-832; REC-PC-833; REC-PC-834; REC-PC-835; REC-PC-836; REC-PC-837; REC-PC-838; REC-PC-839; REC-PC-840; REC-PC-841; REC-PC-842; REC-PC-843; REC-PC-844; REC-PC-845; REC-PC-846; REC-PC-847; REC-PC-848; REC-PC-849; REC-PC-850; REC-PC-851; REC-PC-852; REC-PC-853; REC-PC-854; REC-PC-855; REC-PC-856; REC-PC-857; REC-PC-858; REC-PC-859; REC-PC-860; REC-PC-861; REC-PC-862; REC-PC-863; REC-PC-864; REC-PC-865; REC-PC-866; REC-PC-867; REC-PC-868; REC-PC-869; REC-PC-870; REC-PC-871; REC-PC-872; REC-PC-873; REC-PC-874; REC-PC-875; REC-PC-876; REC-PC-877; REC-PC-878; REC-PC-879; REC-PC-880; REC-PC-881; REC-PC-882; REC-PC-883; REC-PC-884; REC-PC-885; REC-PC-886; REC-PC-887; REC-PC-888; REC-PC-889; REC-PC-890; REC-PC-891; REC-PC-892; REC-PC-893; REC-PC-894; REC-PC-895; REC-PC-896; REC-PC-897; REC-PC-898; REC-PC-899; REC-PC-900; REC-PC-901; REC-PC-902; REC-PC-903; REC-PC-904; REC-PC-905; REC-PC-906; REC-PC-907; REC-PC-908; REC-PC-909; REC-PC-910; REC-PC-911; REC-PC-912; REC-PC-913; REC-PC-914; REC-PC-915; REC-PC-916; REC-PC-917; REC-PC-918; REC-PC-919; REC-PC-920; REC-PC-921; REC-PC-922; REC-PC-923; REC-PC-924; REC-PC-925; REC-PC-926; REC-PC-927; REC-PC-928; REC-PC-929; REC-PC-930; REC-PC-931; REC-PC-932; REC-PC-933; REC-PC-934; REC-PC-935; REC-PC-936; REC-PC-937; REC-PC-938; REC-PC-939; REC-PC-940; REC-PC-941; REC-PC-942; REC-PC-943; REC-PC-944; REC-PC-945; REC-PC-946; REC-PC-947; REC-PC-948; REC-PC-949; REC-PC-950; REC-PC-951; REC-PC-952; REC-PC-953; REC-PC-954; REC-PC-955; REC-PC-956; REC-PC-957; REC-PC-958; REC-PC-959; REC-PC-960; REC-PC-961; REC-PC-962; REC-PC-963; REC-PC-964; REC-PC-965; REC-PC-966; REC-PC-967; REC-PC-968; REC-PC-969; REC-PC-970; REC-PC-971; REC-PC-972; REC-PC-973; REC-PC-974; REC-PC-975; REC-PC-976; REC-PC-977; REC-PC-978; REC-PC-979; REC-PC-980; REC-PC-981; REC-PC-982; REC-PC-983; REC-PC-984; REC-PC-985; REC-PC-986; REC-PC-987; REC-PC-988; REC-PC-989; REC-PC-990; REC-PC-991; REC-PC-992; REC-PC-993; REC-PC-994; REC-PC-995; REC-PC-996; REC-PC-997; REC-PC-998; REC-PC-999; REC-PC-1000; REC-PC-1001; REC-PC-1002; REC-PC-1003; REC-PC-1004; REC-PC-1005; REC-PC-1006; REC-PC-1007; REC-PC-1008; REC-PC-1009; REC-PC-1010; REC-PC-1011; REC-PC-1012; REC-PC-1013; REC-PC-1014; REC-PC-1015; REC-PC-1016; REC-PC-1017; REC-PC-1018; REC-PC-1019; REC-PC-1020; REC-PC-1021; REC-PC-1022; REC-PC-1023; REC-PC-1024; REC-PC-1025; REC-PC-1026; REC-PC-1027; REC-PC-1028; REC-PC-1029; REC-PC-1030; REC-PC-1031; REC-PC-1032; REC-PC-1033; REC-PC-1034; REC-PC-1035; REC-PC-1036; REC-PC-1037; REC-PC-1038; REC-PC-1039; REC-PC-1040; REC-PC-1041; REC-PC-1042; REC-PC-1043; REC-PC-1044; REC-PC-1045; REC-PC-1046; REC-PC-1047; REC-PC-1048; REC-PC-1049; REC-PC-1050; REC-PC-1051; REC-PC-1052; REC-PC-1053; REC-PC-1054; REC-PC-1055; REC-PC-1056; REC-PC-1057; REC-PC-1058; REC-PC-1059; REC-PC-1060; REC-PC-1061; REC-PC-1062; REC-PC-1063; REC-PC-1064; REC-PC-1065; REC-PC-1066; REC-PC-1067; REC-PC-1068; REC-PC-1069; REC-PC-1070; REC-PC-1071; REC-PC-1072; REC-PC-1073; REC-PC-1074; REC-PC-1075; REC-PC-1076; REC-PC-1077; REC-PC-1078; REC-PC-1079; REC-PC-1080; REC-PC-1081; REC-PC-1082; REC-PC-1083; REC-PC-1084; REC-PC-1085; REC-PC-1086; REC-PC-1087; REC-PC-1088; REC-PC-1089; REC-PC-1090; REC-PC-1091; REC-PC-1092; REC-PC-1093; REC-PC-1094; REC-PC-1095; REC-PC-1096; REC-PC-1097; REC-PC-1098; REC-PC-1099; REC-PC-1100; REC-PC-1101; REC-PC-1102; REC-PC-1103; REC-PC-1104; REC-PC-1105; REC-PC-1106; REC-PC-1107; REC-PC-1108; REC-PC-1109; REC-PC-1110; REC-PC-1111; REC-PC-1112; REC-PC-1113; REC-PC-1114; REC-PC-1115; REC-PC-1116; REC-PC-1117; REC-PC-1118; REC-PC-1119; REC-PC-1120; REC-PC-1121; REC-PC-1122; REC-PC-1123; REC-PC-1124; REC-PC-1125; REC-PC-1126; REC-PC-1127; REC-PC-1128; REC-PC-1129; REC-PC-1130; REC-PC-1131; REC-PC-1132; REC-PC-1133; REC-PC-1134; REC-PC-1135; REC-PC-1136; REC-PC-1137; REC-PC-1138; REC-PC-1139; REC-PC-1140; REC-PC-1141; REC-PC-1142; REC-PC-1143; REC-PC-1144; REC-PC-1145; REC-PC-1146; REC-PC-1147; REC-PC-1148; REC-PC-1149; REC-PC-1150; REC-PC-1151; REC-PC-1152; REC-PC-1153; REC-PC-1154; REC-PC-1155; REC-PC-1156; REC-PC-1157; REC-PC-1158; REC-PC-1159; REC-PC-1160; REC-PC-1161; REC-PC-1162; REC-PC-1163; REC-PC-1164; REC-PC-1165; REC-PC-1166; REC-PC-1167; REC-PC-1168; REC-PC-1169; REC-PC-1170; REC-PC-1171; REC-PC-1172; REC-PC-1173; REC-PC-1174; REC-PC-1175; REC-PC-1176; REC-PC-1177; REC-PC-1178; REC-PC-1179; REC-PC-1180; REC-PC-1181; REC-PC-1182; REC-PC-1183; REC-PC-1184; REC-PC-1185; REC-PC-1186; REC-PC-1187; REC-PC-1188; REC-PC-1189; REC-PC-1190; REC-PC-1191; REC-PC-1192; REC-PC-1193; REC-PC-1194; REC-PC-1195; REC-PC-1196; REC-PC-1197; REC-PC-1198; REC-PC-1199; REC-PC-1200; REC-PC-1201; REC-PC-1202; REC-PC-1203; REC-PC-1204; REC-PC-1205; REC-PC-1206; REC-PC-1207; REC-PC-1208; REC-PC-1209; REC-PC-1210; REC-PC-1211; REC-PC-1212; REC-PC-1

