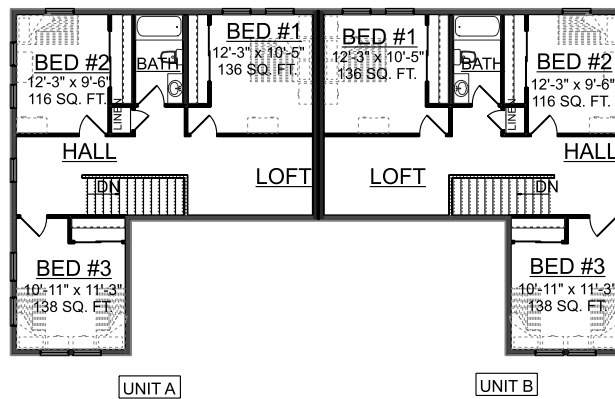
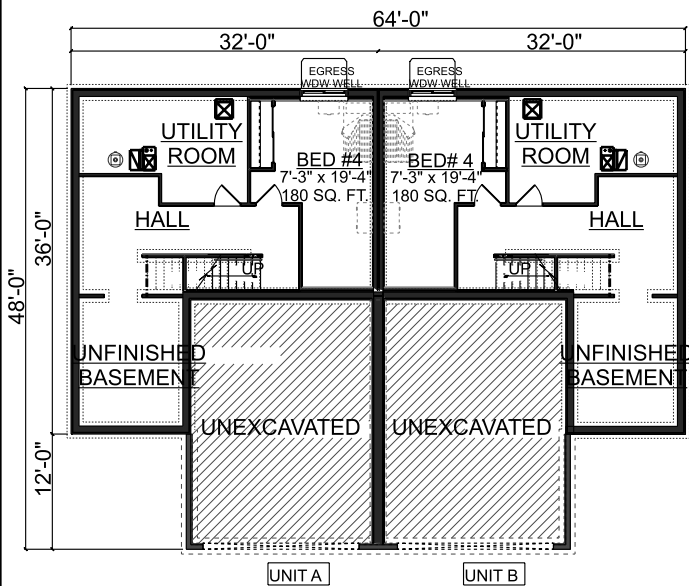




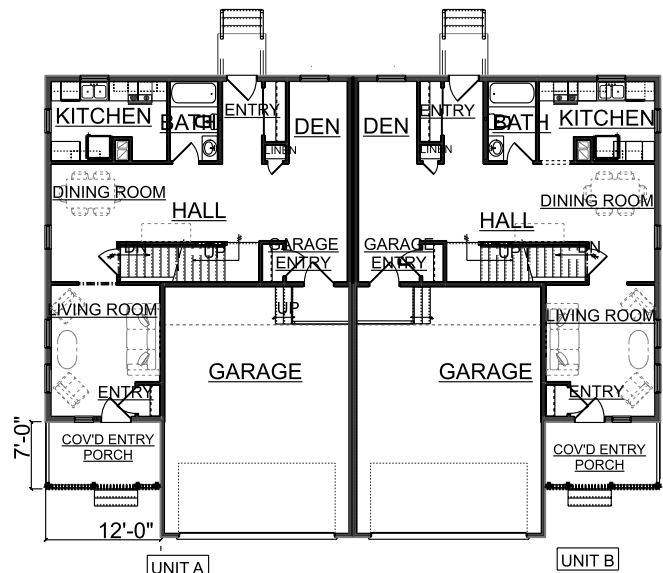
IMAGE MAY NOT REFLECT ACTUAL  
CONSTRUCTED HOUSE



SECOND FLOOR PLAN



FOUNDATION PLAN



FIRST FLOOR PLAN



1954 UNIVERSITY AVE. W.  
ST. PAUL, MN 55104

OFFICE: 651-207-1700  
FAX: 651-641-8641

TWIN HOME DWELLING  
TW17TS4-2  
ATTACHED 2 STALL GARAGE

SAMPLE  
TWIN HOME #2

UNIT A - 3094		UNIT B - 3092	
BASEMENT (UNFINISHED)	630 SQ. FT.	BASEMENT (UNFINISHED)	630 SQ. FT.
BASEMENT (FINISHED)	248 SQ. FT.	BASEMENT (FINISHED)	248 SQ. FT.
FIRST FLOOR	878 SQ. FT.	FIRST FLOOR	878 SQ. FT.
SECOND FLOOR	878 SQ. FT.	SECOND FLOOR	878 SQ. FT.
TOTAL FINISHED: 2,004 SQ. FT.		TOTAL FINISHED: 2,004 SQ. FT.	
TOTAL SQ. FT.: 2,634		TOTAL SQ. FT.: 2,634	
GARAGE AREA: 517 SQ. FT.		GARAGE AREA: 517 SQ. FT.	