

3939 CENTRAL AVENUE MONOPOLE TELECOMMUNICATIONS TOWER FOR THE CITY OF COLOMBIA HEIGHTS, MINNESOTA

GOVERNING SPECIFICATIONS
THE 2018 EDITION OF THE MINNESOTA DEPARTMENT OF TRANSPORTATION "STANDARD SPECIFICATIONS FOR CONSTRUCTION" SHALL GOVERN EXCEPT AS MODIFIED BY THE SPECIFICATIONS FOR THIS PROJECT.



I HEREBY CERTIFY THAT THIS PLAN, SPECIFICATION, OR REPORT WAS PREPARED BY ME OR UNDER MY DIRECT SUPERVISION AND THAT I AM A LICENSED PROFESSIONAL ENGINEER UNDER THE LAWS OF THE STATE OF MINNESOTA.
CHAD E. SETTERHOLM, P.E.
DATE: XX.XX.2020 REGISTRATION NO. 40913

3939 CENTRAL AVENUE MONOPOLE
TELECOMMUNICATION TOWER
COLOMBIA HEIGHTS, MINNESOTA

MARK	DATE	DESCRIPTION REVISIONS

COLLHT157649
10.19.2020
DESIGNED BY: CES
DRAWN BY: HRC

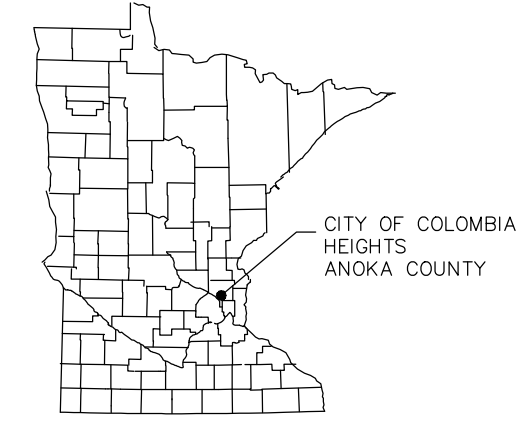
SHEET TITLE
TITLE SHEET

SHEET
G1



VICINITY MAP

PROJECT LOCATION



INDEX

SHEET NO.	DESCRIPTION
G1	TITLE SHEET
C2	EXISTING CONDITIONS
C3	SITE PLAN
C4	SITE PLAN DETAILS
C4	FENCING AND MONOPOLE DETAIL

THIS PLAN CONTAINS 5 SHEETS.



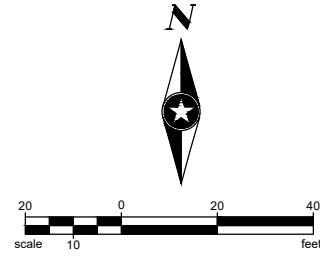
NOTE:
THE SUBSURFACE UTILITY QUALITY INFORMATION IN THIS PLAN IS LEVEL D. THIS UTILITY QUALITY LEVEL WAS DETERMINED ACCORDING TO THE GUIDELINES OF CI/ASCE 38-02 ENTITLED "STANDARD GUIDELINES FOR THE COLLECTION AND DEPICTION OF EXISTING SUBSURFACE UTILITY DATA."

THE CONTRACTOR SHALL CALL THE GOPHER STATE ONE CALL SYSTEM AT 811 BEFORE COMMENCING EXCAVATION.



Know what's below.
Call before you dig.

X:\AE\C\COLHT\157649\5-final-dsgn\51-drawings\10-Civil\cad\dwg\sheet\COLHT157649TTL.dwg 11/18/2020 5:52 PM hcunningham



CENTRAL AVE. NE

COLOMBIA HEIGHTS
PUBLIC LIBRARY

COLOMBIA HEIGHTS
RENTAL

39TH AVE. NE



SHEET
C1

SHEET TITLE
EXISTING CONDITIONS

SEH FILE NO. COLHT157649
PROJECT NO.
ISSUE DATE 10-19-2020
DESIGNED BY: CES
DRAWN BY: HRC

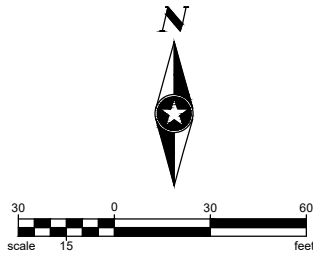
MARK DATE DESCRIPTION
REVISIONS

**3939 CENTRAL AVENUE MONOPOLE
TELECOMMUNICATION TOWER
COLOMBIA HEIGHTS, MINNESOTA**

I HEREBY CERTIFY THAT THIS PLAN, SPECIFICATION,
OR REPORT WAS PREPARED BY ME OR UNDER MY DIRECT
SUPERVISION AND THAT I AM A LICENSED PROFESSIONAL
ENGINEER UNDER THE LAWS OF THE
STATE OF MINNESOTA.
CHAD E. SETTERHOLM, P.E.
DATE XX.XX.2020 REGISTRATION NO. 40913



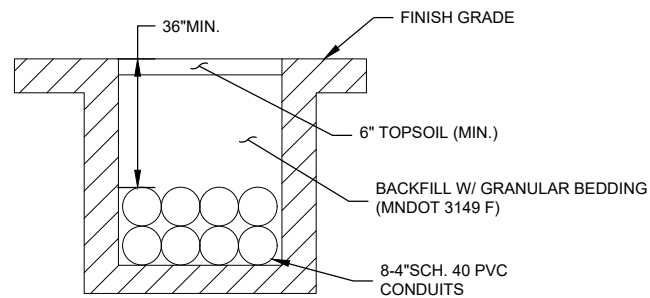
3535 MADIASE CENTER DR
FOND DU LAC, WI 55010
PHONE: 920.255.2100
FAX: 920.255.2150
WWW.SEHINC.COM



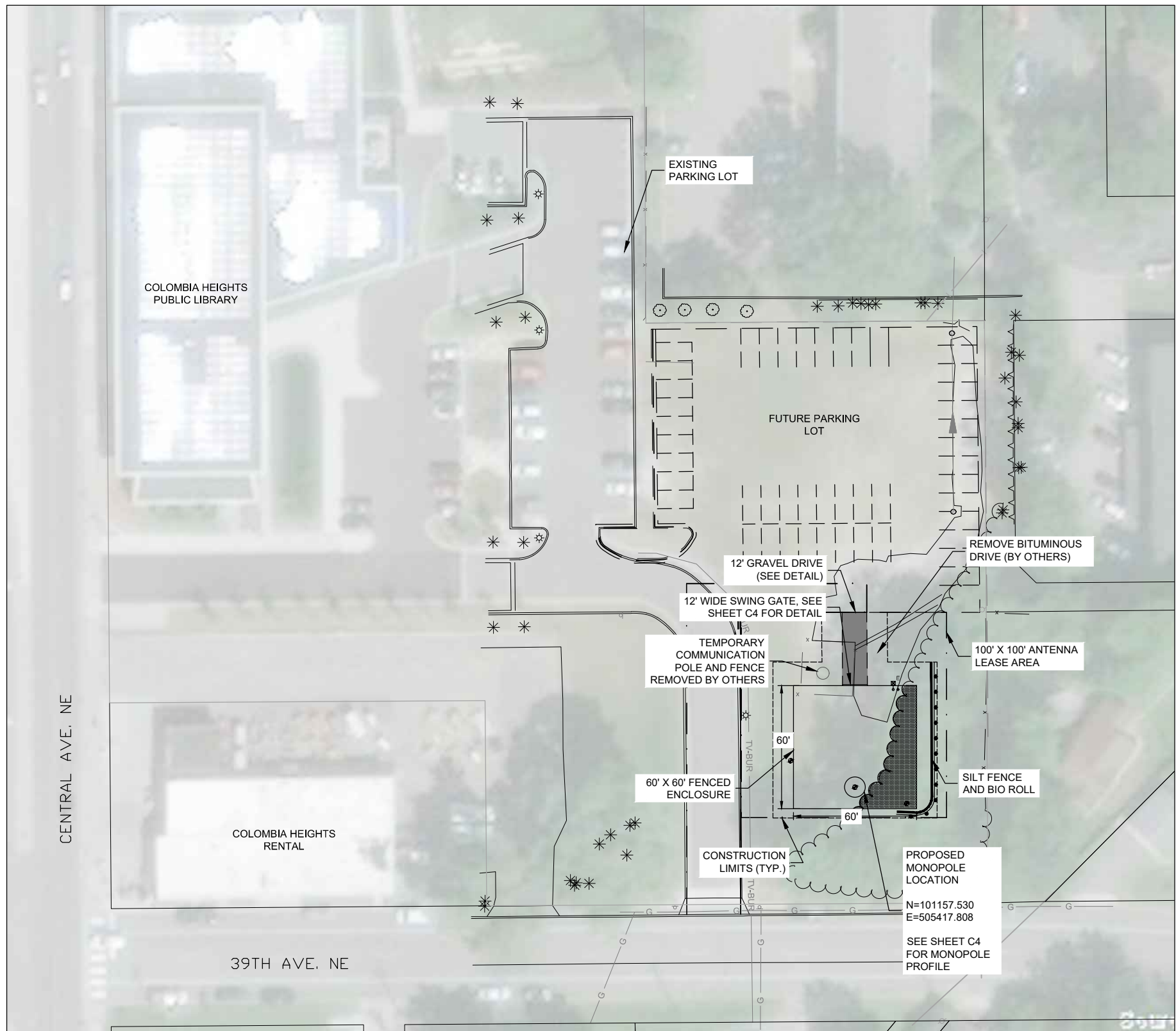
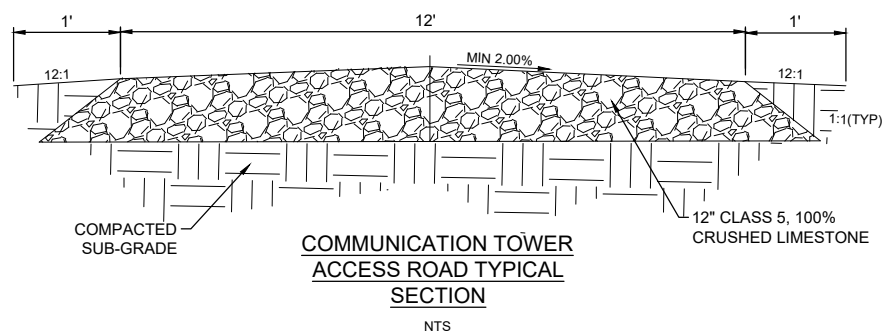
- NOTES:
- CONTRACTOR TO VERIFY ALL UTILITY LOCATIONS PRIOR TO COMMENCING EXCAVATION.
 - RESTORE ALL DISTURBED AREAS WITH 6" MIN. TOPSOIL AND HYDROSEED WITH THE FOLLOWING MATERIALS AND RATES:
 - SEED MIXTURE = MNDOT 25-131 (RATE OF 240 LBS PER ACRE)
 - HYDRAULIC MULCH = MNDOT 3884.B.2 (350 LBS PER 1,000 GAL OF SLURRY)
 - WATER = (875 GAL PER 1,000 GAL OF SLURRY)
 - FERTILIZER = MNDOT TYPE 3 SLOW RELEASE FERTILIZER. NPK: 20-0-10 (150 LBS PER ACRE)
 - ACCESS ROAD SHALL FOLLOW EXISTING SITE ELEVATION/GRADE PER TYPICAL ACCESS ROAD SECTION DETAIL SHOWN ON THIS PAGE.

LEGEND

- 12" -100% CLASS 5 CRUSHED LIMESTONE ACCESS ROAD
- CONSTRUCTION LIMITS
- SILT FENCE & BIO ROLL
- CLEAR & GRUB TREE LINE



CONDUIT TRENCH (8 BANK)
NTS



PROPOSED MONOPOLE LOCATION
N=101157.530
E=505417.808
SEE SHEET C4 FOR MONOPOLE PROFILE

X:\AEC\COLHT157649\5-final-dgn\5-1-drawings\10-Civil\dwg\sheet\COLHT157649REM.dwg 11/19/2020 12:31 PM hcunningham



I HEREBY CERTIFY THAT THIS PLAN, SPECIFICATION, OR REPORT WAS PREPARED BY ME OR UNDER MY DIRECT SUPERVISION AND THAT I AM A LICENSED PROFESSIONAL ENGINEER UNDER THE LAWS OF THE STATE OF MINNESOTA.
CHAD E. SETTERHOLM, P.E.
DATE: XX.XX.2020 REGISTRATION NO. 40913

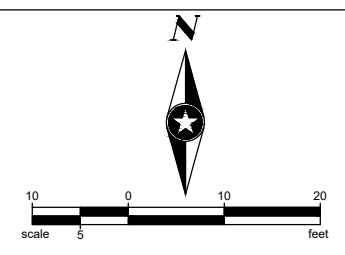
3939 CENTRAL AVENUE MONOPOLE TELECOMMUNICATION TOWER COLUMBIA HEIGHTS, MINNESOTA

MARK	DATE	DESCRIPTION	REVISIONS

SEH FILE NO. COLHT157649
PROJECT NO. 10-19-2020
ISSUE DATE
DESIGNED BY: CES
DRAWN BY: HRC

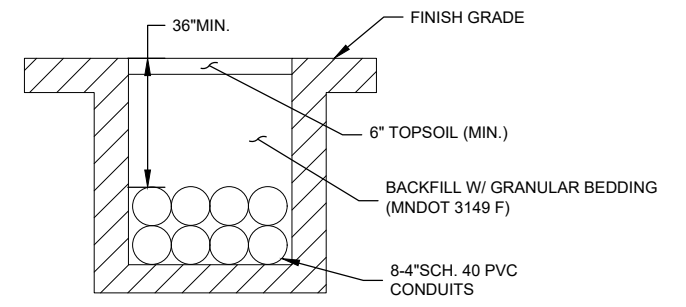
SHEET TITLE
SITE PLAN

SHEET
C2

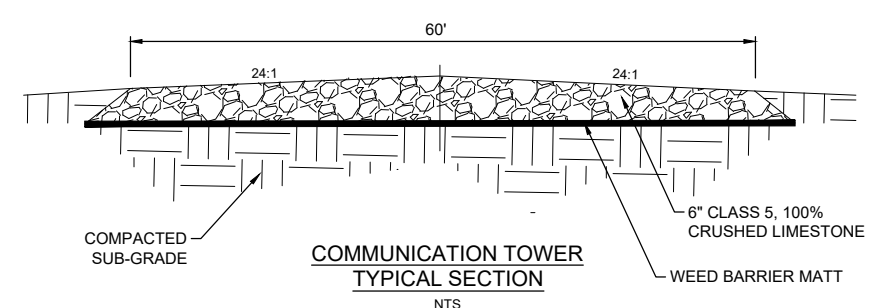


- NOTES:**
- CONTRACTOR TO VERIFY ALL UTILITY LOCATIONS PRIOR TO COMMENCING EXCAVATION.
 - RESTORE ALL DISTURBED AREAS WITH 6" MIN. TOPSOIL AND HYDROSEED WITH THE FOLLOWING MATERIALS AND RATES:
 - SEED MIXTURE = MNDOT 25-131 (RATE OF 240 LBS PER ACRE)
 - HYDRAULIC MULCH = MNDOT 3884.B.2 (350 LBS PER 1,000 GAL OF SLURRY)
 - WATER = (875 GAL PER 1,000 GAL OF SLURRY)
 - FERTILIZER = MNDOT TYPE 3 SLOW RELEASE FERTILIZER. NPK: 20-0-10 (150 LBS PER ACRE)
 - ACCESS ROAD SHALL FOLLOW EXISTING SITE ELEVATION/GRADE PER TYPICAL ACCESS ROAD DETAIL SHOWN ON THIS PAGE.
 - DIMENSIONS TO PROPERTY LINES ARE TO THE NEAREST FOOT AND DO NOT SERVE AS A LEGAL DESCRIPTION OF PROPERTY.

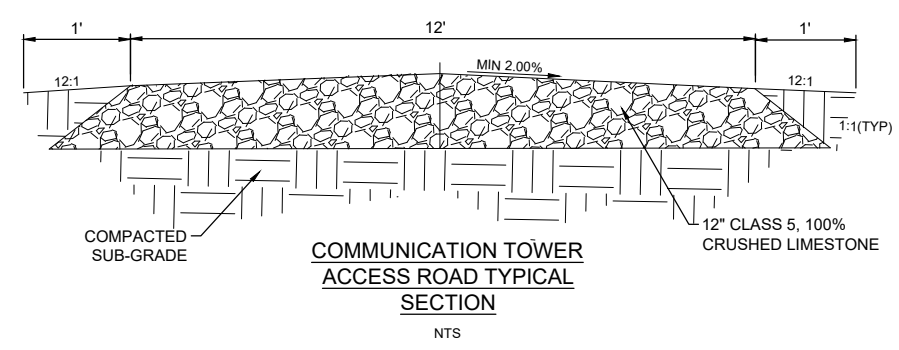
- LEGEND**
- 12" -100% CLASS 5 CRUSHED LIMESTONE ACCESS ROAD
 - CONSTRUCTION LIMITS
 - SILT FENCE & BIO ROLL
 - CLEAR & GRUB TREE LINE



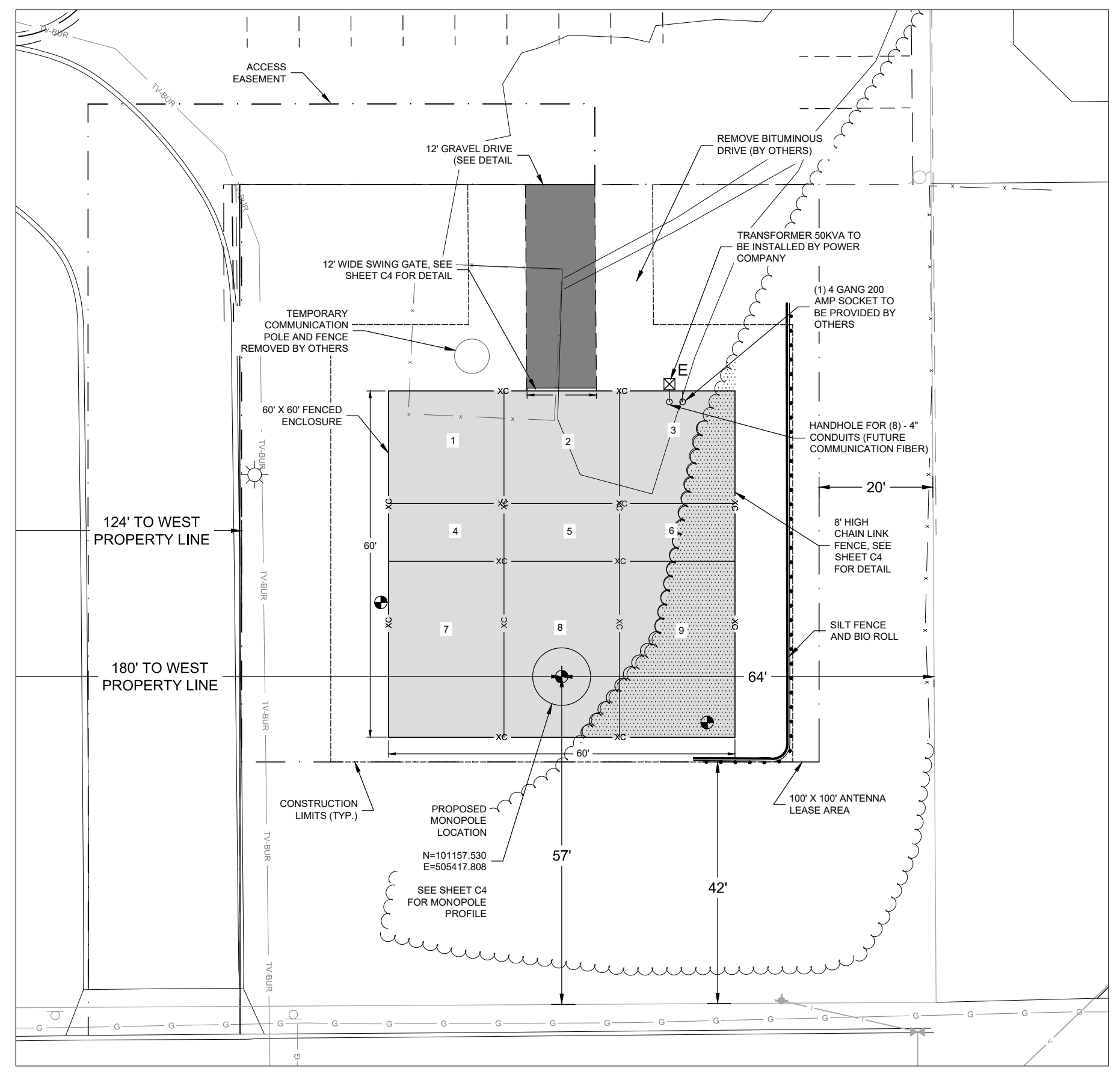
CONDUIT TRENCH (8 BANK)
 NTS



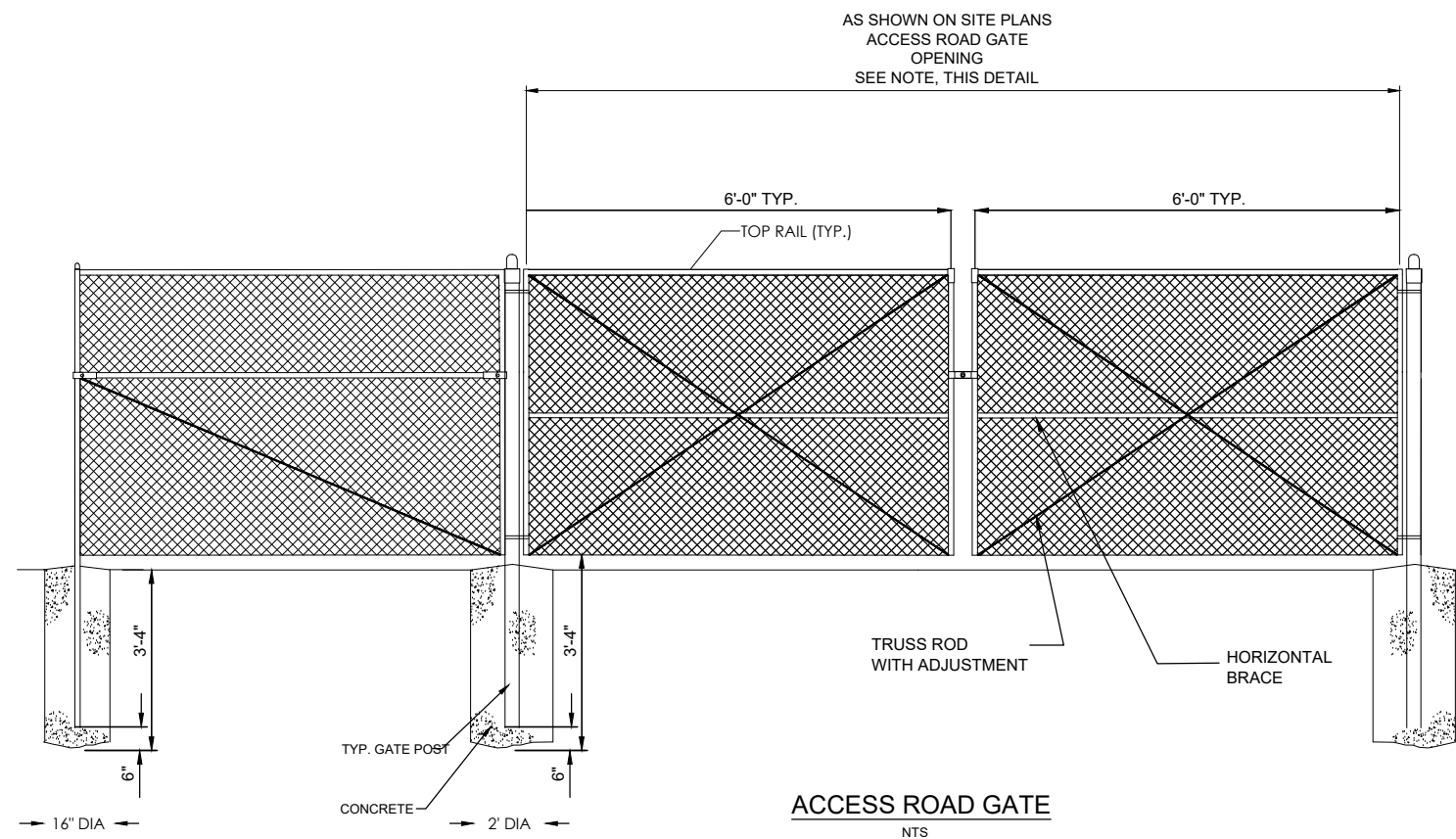
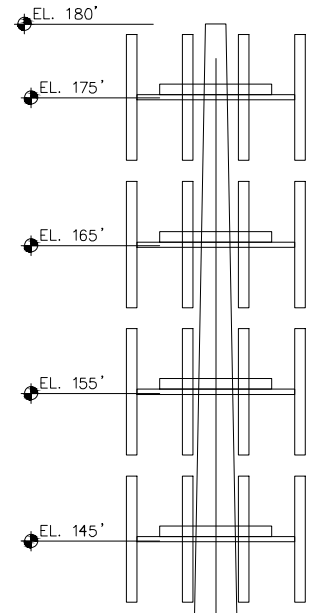
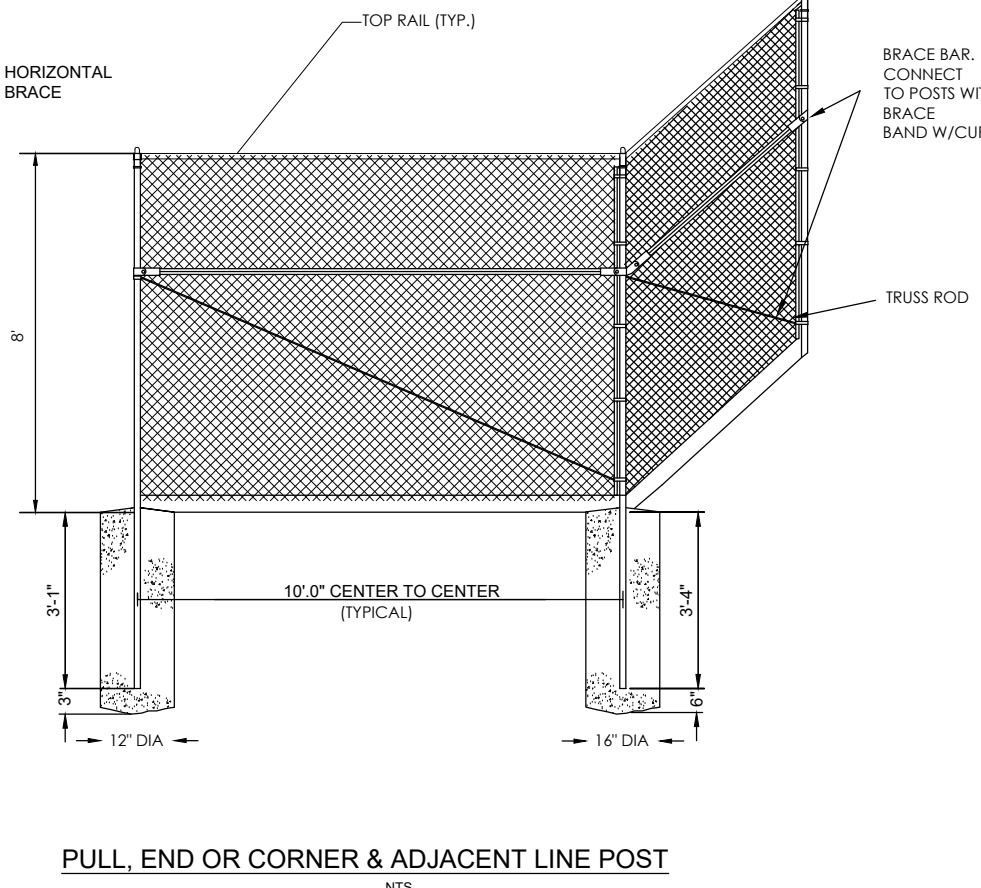
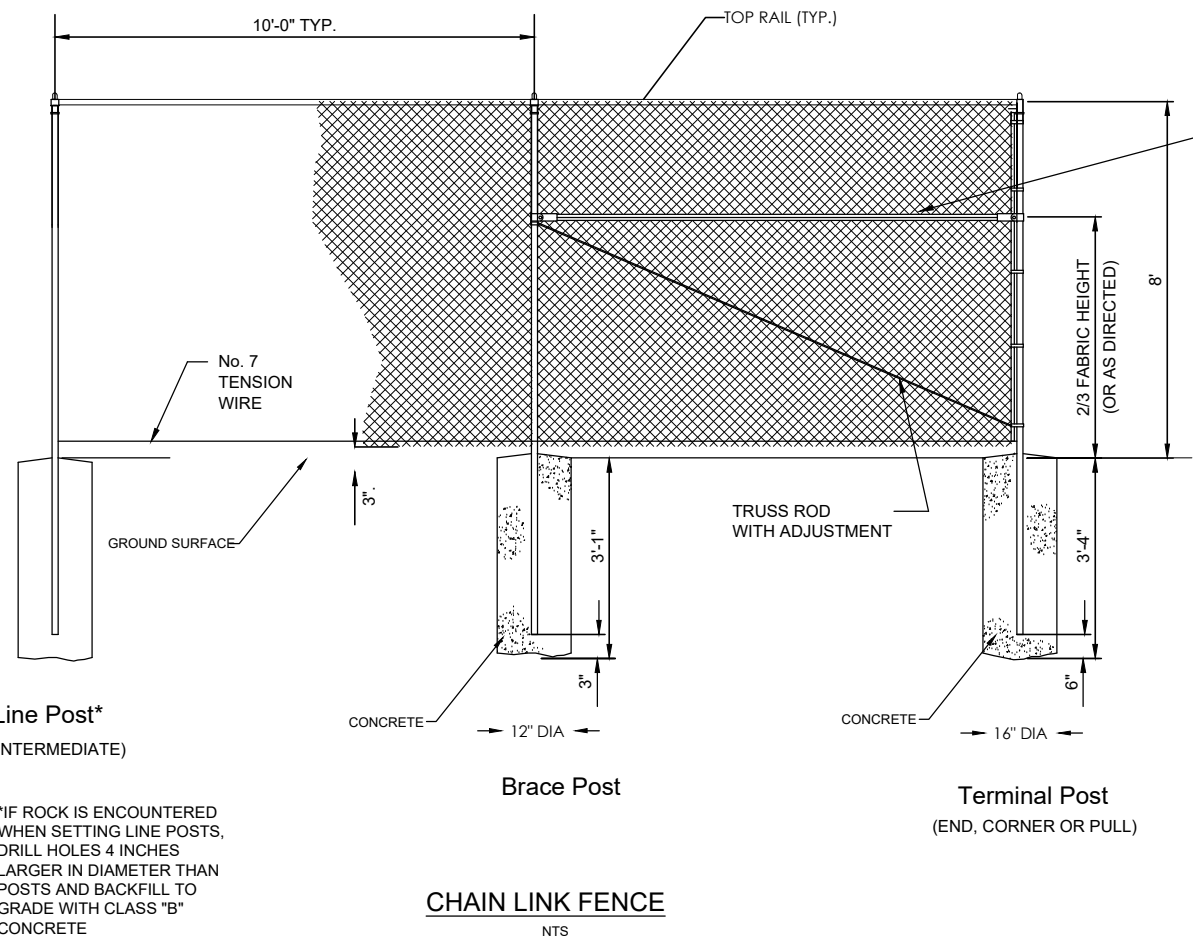
COMMUNICATION TOWER TYPICAL SECTION
 NTS



COMMUNICATION TOWER ACCESS ROAD TYPICAL SECTION
 NTS



X:\AEC\COLHT157649\5-final-dgn\5-1-drawings\10-Civil\load\dwg\sheet\COLHT157649SITE.dwg 11/19/2020 12:16 PM hcunningham



- FENCE NOTES:**
1. PROVIDE LATCHING DEVICES TO HOLD GATES IN OPEN POSITION.
 2. IF ROCK IS ENCOUNTERED WHEN SETTING LINE POSTS, DRILL HOLES 4 INCHES LARGER IN DIAMETER THAN POSTS & BACKFILL TO GRADE WITH CLASS "B" CONCRETE.
 3. 8' BLACK VINYL COATED ARCHITECTURAL GRADE FENCING PER SPECIFICATIONS.
 4. TOP RAIL SHALL BE INSTALLED ON ALL FENCING & GATES.

NOTE: PROVIDE LATCHING DEVICES TO HOLD GATES IN OPEN POSITION,

- POLE NOTES:**
- ANTENNA FEED LINES RUN INSIDE POLE.
 - ALL DIMENSIONS ARE ABOVE GROUND LEVEL, UNLESS OTHERWISE SPECIFIED.
 - WEIGHTS SHOWN ARE ESTIMATES. FINAL WEIGHTS MAY VARY.
 - TWELVE FOOT SECTOR PLATFORMS ARE TO BE SUPPLIED AND INSTALLED FOR ALL ELEVATIONS.
 - FULL HEIGHT STEP BOLTS.

COMMUNICATION MONOPOLE DETAIL
NTS

X:\AEC\COLHT157649\5-final-dgn\51-drawings\10-Civil\cad\dwg\sheet\COLHT157649DT.dwg 10/28/2020 4:00 PM hcummingham

3535 MADAME CENTER DR
ST PAUL, MN 55110
FAX: 952.980.7160
WATTS: 952.925.5055
www.sehinc.com

I HEREBY CERTIFY THAT THIS PLAN, SPECIFICATION, OR REPORT WAS PREPARED BY ME OR UNDER MY DIRECT SUPERVISION AND THAT I AM A LICENSED PROFESSIONAL ENGINEER UNDER THE LAWS OF THE STATE OF MINNESOTA.

CHAD E. SETTERHOLM, P.E.
DATE: XX.XX.2020 REGISTRATION NO. 40913

3939 CENTRAL AVENUE MONOPOLE TELECOMMUNICATION TOWER
COLUMBIA HEIGHTS, MINNESOTA

MARK	DATE	DESCRIPTION / REVISIONS

SEH FILE NO. COLHT157649
PROJECT NO. 10-19-2020
ISSUE DATE
DESIGNED BY: CES
DRAWN BY: HRC

SHEET TITLE
FENCING AND MONOPOLE DETAIL

SHEET
C4