



Axon Fixed ALPR (Outpost and Lightpost Overview)

Dominic Dixon – Axon Fixed ALPR Specialist
317.654.7357 – domdixon@axon.com

HF 3856 STALLED The "This Would Kill It" Bill

No ALPR use by law enforcement at all — requires warrant to access plate data, existing data existing data must be deleted.

Impact: No real-time stolen vehicle hits, no pattern tracking, turns ALPR from proactive to unusable.

HF 4205 WATCH Data Retention Limits

Limits data retention to ~48 hours, cuts cross-agency sharing, adds stricter access rules.

Impact: Lose ability to work long-term theft patterns, track organized crews across cities.

HF 4661 Vendor & Sharing Controls

Tightens vendor access, requires audit trails, adds compliance friction.

Impact: Slows multi-agency coordination, adds logging requirements.

Operational Impact for Auto Theft Units

Lose ability to: Work longer-term theft patterns, tie vehicles to crime series over weeks/months

Harder to: Track organized crews moving across cities, use shared systems to recover vehicles

More friction: Slower access to networks, more logging/compliance requirements

Bottom Line

ALPR still exists but becomes **short-term/reactive**. Direction is clear: **less sharing, less data, more hoops**.

For auto theft: Harder to track crews over time and across jurisdictions.

“

Field Message: "Nothing here outright kills ALPR yet, but the direction is pretty clear — less sharing, less data, and more hoops. For auto theft, that mostly means you lose the ability to track crews over time and across jurisdictions, which is kind of the whole game right now."

Your Data. Your Rules.

Axon gives you full ownership and control over your data.



You Own It

License plate reads, alerts, and metadata belong to you — not Axon.



You Control Access

Axon does not access, analyze, or share your data without your direction.




You Set Sharing Rules

You decide what's shared, with whom, and when — all access is auditable.



You Get Direct Access

Access your data through UI tools, APIs, exports, and secure integrations.



Privacy Concerns in ALPR – Our Approach

No National Lookup

- Sharing is **intentional, not global**
- Agencies define their own sharing networks

No Bulk Copying

- Data stays with the donor
- Agencies cannot share data they don't own
- Recipients query, not collect
- Access can be removed immediately
- No downstream copies to clean up

Built for Accountability

- Rich, detailed internal audit logs
 - Clear data on which/when users in donor agencies did a search
- Full visibility into how shared data is used

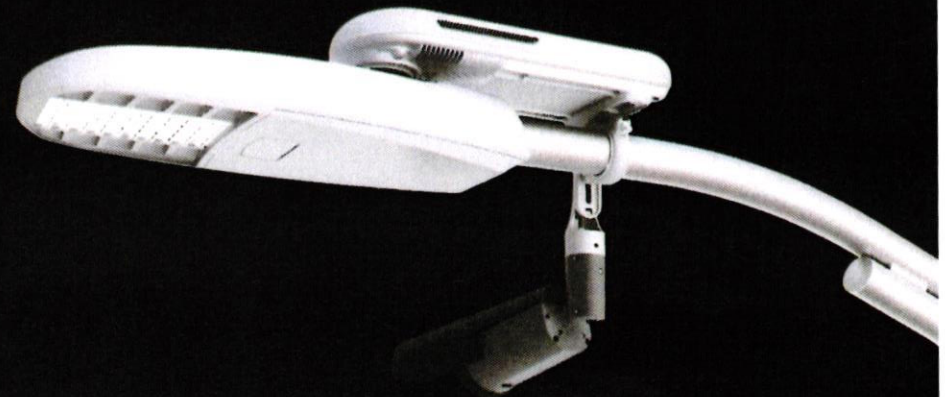
Designed for Transparency

- Agencies can generate public audit reports
- Sensitive details can be removed safely
- Oversight remains intact

ALPR + VAR + Live Video in a single fixed camera



AXON OUTPOST



AXON LIGHTPOST

ubicquia

CAMERA

FEATURES

WHAT'S INCLUDED



Axon Outpost

Fixed ALPR + VAR
+ Livestreaming
Mount Anywhere

- ✓ Basic pole
- ✓ Flexible power sources, incl. solar panel
- ✓ Permitting support
- ✓ Basic install, maintenance, warranty, battery refresh
- ✓ LTE + ALPR license



Axon Lightpost

Long-range ALPR +
+ VAR + Livestreaming
24/7 Recording
Fast Deploy on
Existing Infrastructure

- ✓ Ubicquia Hub 2.0
- ✓ ALPR/Livestreaming camera
- ✓ Installation
- ✓ Access fees
- ✓ LTE + ALPR license



Lightpost

ubicquia

AXIS Q1800-LE Long-range ALPR + Live Video + Video Recording

UbiHub installs and connects in under an hour.

No new poles or permits, use existing streetlights with 24/7 power

Alternative Option for *Pan Tilt Zoom*: AXIS Q6325-LE PTZ AI
Analytics + Live Video + Video Recording



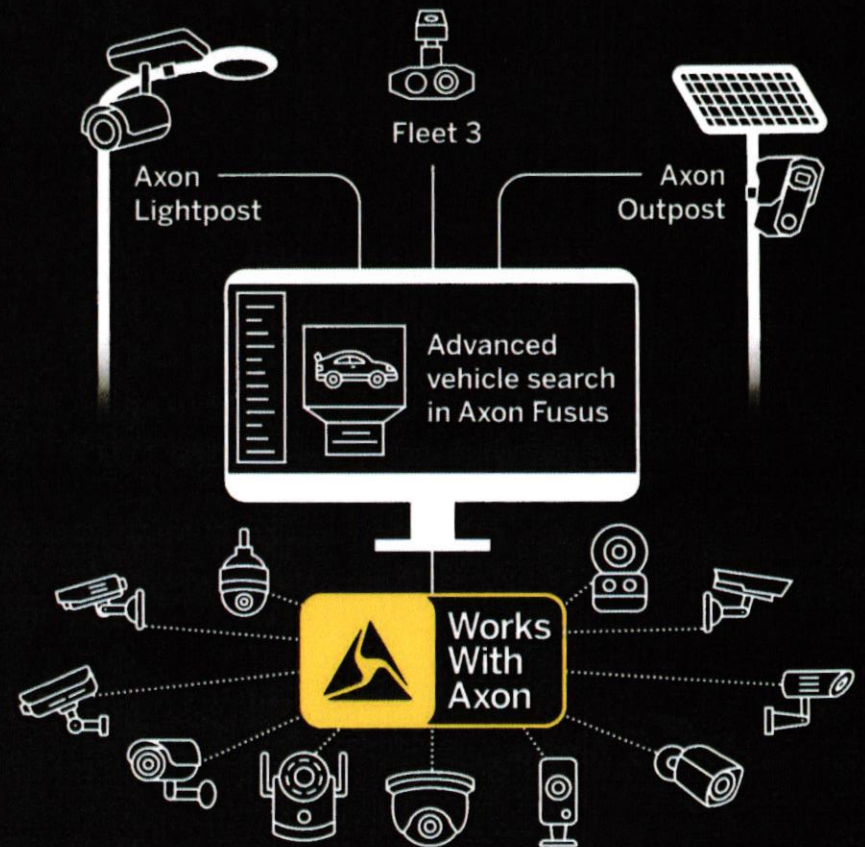
Stop and solve more crime faster

Largest network of fleet, fixed, and 3P public safety ALPR + VAR + live cameras

Search and alerts by plate, partials, color, make, damage, unique features

Detect patterns and link movement across jurisdictions

Livestream and act — all in one platform





Metric	Axon Outpost	Other Systems	Why It Matters
Read Speed	Achieves 100+ mph in read speed, with at least 75 mph verified across all conditions	Typically 75-100 mph	Captures high-speed vehicles without loss of accuracy
Read Distance	75 ft across all lighting and weather conditions	~75 ft typical	Greater reach and deployment flexibility
Read Accuracy	96-98.4% weighted average across all conditions	~90-93% typical	More reliable reads means fewer missed plates
Lanes Covered	3+ lanes of coverage with 60° FOV 160° livestream FOV	Narrower view (30° FOV) across only ~1.5 lanes. No livestreaming	More coverage per installation
Plate Capture Rate	92%+ daytime 88.9% average across all conditions, including nighttime	Often 80-85%	Confidence in evidence collection
Night Performance	99% read accuracy	Degrades in low light	Consistent accuracy even with less light
Solar Charging	4 days operation with included external battery Only 2 hours of sun per day needed for proper functionality	Not sufficient for continuous operation in areas with limited sunlight	Continuous uptime even in low-sunlight conditions
Internal Battery Uptime	Up to 14.5 hours	Limited data available	Consistent availability and reliability
Data Ingest & Livestream	<7 sec ingest to Axon Evidence / Fusus, <1 sec livestream latency	Slower, often >10 sec	Real-time visibility and faster case response



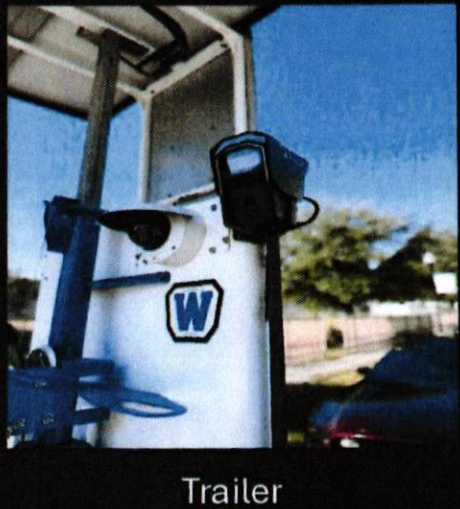
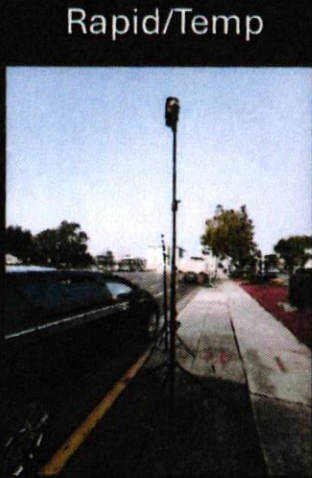
Axon Outpost: Performance Without Compromise

AXON





Other Deployment Types



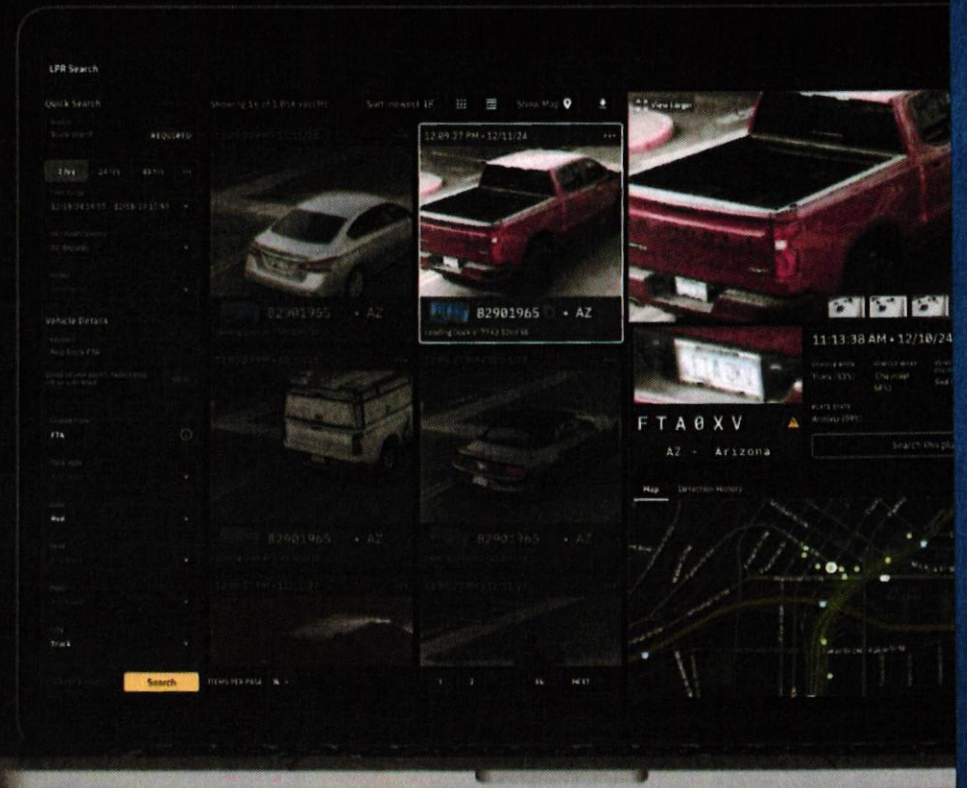
Intelligent Search

Search by plate, features, unique traits

Visualize vehicle movement

Instant alerts from any ALPR camera

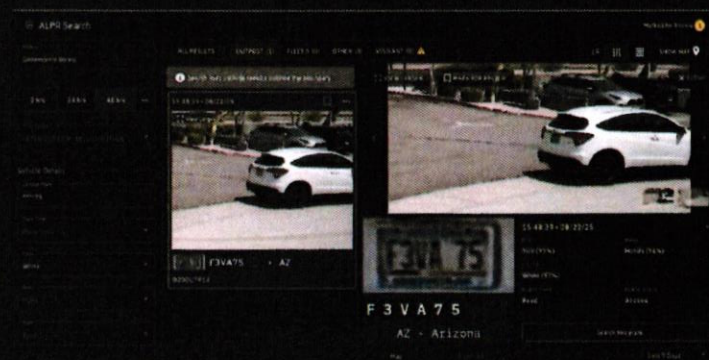
Cross-agency sharing on your terms



Vehicle Intelligence in Fusus - Current State



Map-Based Search



Search by Partial



Search by Unique Identifiers



Nighttime Capture

Finder File Edit View Go Window Help

Evidence - Axon Evidence x fususONE - Map x +

https://fusosone.com/map#-73.46217/40.68095/12

Axon Fusus

Nicollet Rd SB @ LIE

SCPD 2nd Precinct - S

CETTA

NAMCO WEST - E FACING

NAMCO E - E FACING

WARSHAW PARKING LOT

Seaford House

Great Neck Rd @ RT 110

NAMCO WEST - W FACING

WARSHAW NORTH

WARSHAW SOUTH

Deer Park Ave @ DHFD HQ

Straight Path @ SSP

DR. ROGU OFFICE

JB GARAGE NEW

SARAH DRIVE - ROGU

TALISMAN DR - PINCUS

52 HUNTING HILL POLE - STREET FACING

15

Security, Assured

Device Security and Hardware Integrity



Strong Access Control & Data Protection

AES-256 encryption at rest, least-privilege role-based-access control.



Resilient, Secure Network Security & High Uptime

Firewall-restricted outbound communication, 99%+ uptime, automated recovery.



Hardened Zero-Trust Device Architecture

Secure boot, cryptographically validated firmware.



Aligned with Leading Security and Privacy Standards

SOC 2 Type II, ISO 27001/27017/27018/27701, CJIS, FedRAMP High, and FIPS-validated.

Fast, expert setup + 5-year investment protection

SCOPING & DEPLOYMENT

- ✓ **Site Evaluation**
Assess traffic flow
Power/network access + solar viability assessment
- ✓ **Permitting Support**
Lightpost attachment agreements
Organize permits for Outpost deployments
Full-funnel coordination
- ✓ **Installation**
Turnkey install and activation for every unit

WARRANTY & MAINTENANCE

- ✓ **Full Hardware Warranty**
Repair / replacement
- ✓ **Ongoing Software Updates +
Tech Support**
- ✓ **Preventative Maintenance**
Battery replacement at 30 months
Solar panel and lens cleaning
- ✓ **On-Site + Remote Assistance**

Vehicle Intelligence Roadmap – Rest of 2026

• Mid-Year Rollouts

- Private and external hotlist management in Fusus
- **Sharing:** Conditional, bulk, and reciprocal sharing
- **Transparency:** Adds coverage, uptime, and hit density metrics

• End-of-Year Vision

- Fuzzy plate detection, Convoy Analysis, Swapped Plate Insights
- Unified ALPR + CCTV search with vehicle recognition
- Map- and unit-based alert filters, case-driven sharing
- Public-facing transparency dashboards with performance KPIs

New Sharing Partner

Your about to share your data with ALPR TestA. Would you like to share full access or alerts only?

Sharing conditions *

Alerts Only**
This agency will only see reads that match their hotlists

Full Sharing**
This agency can search all of my agency's reads

*You or the partnering agency can end/edit this partnership at any time.

**Before sharing, make sure you check local, state, and federal laws. Axon is not liable for any consequences of sending sharing requests.

CANCEL

SEND INVITE

Vehicle Intelligence Investments - 2026

☰ LPR Search

Plate State

NY

Color

Red

Make

Dodge

Type

Pickup Truck

Additional Details

Search

CLEAR ALL

Top Rack

Window Stickers

Bumper Stickers

New Sharing Partner

Your about to share your data with ALPR TestA. Would you like to share full access or alerts only?

Sharing conditions *

Alerts Only**

This agency will only see reads that match their hotlists

Full Sharing**

This agency can search all of my agency's reads

*You or the partnering agency can end/edit this partnership at any time.

**Before sharing, make sure you check local, state, and federal laws. Axon is not liable for any consequences of sending sharing requests.

CANCEL

SEND INVITE

- **Search Enhancements**

- Additional attributes, filters, convoy search, and more

- **Unified Hotlist Management**

- Hotlists apply across Fleet 3, Outpost, Lightpost, and WWA integrations

- **ALPR Hit Alert Improvements**

- More alert info, filtering options: proximity, polygons, and by hotlist

- **ALPR Sharing**

- Sharing among and between Public and Private entities

- **Transparency Features**

- Policy, Hit/Read dashboards, and outcome tracking

PROTECT MORE

LIVES IN

MORE PLACES

UNIQUE ID:
BROKEN HEADLIGHT

123 ABC
123 ABC

MAKE:	MODEL:
HONDA	CIVIC
YEAR:	COLOR:
2004	WHITE