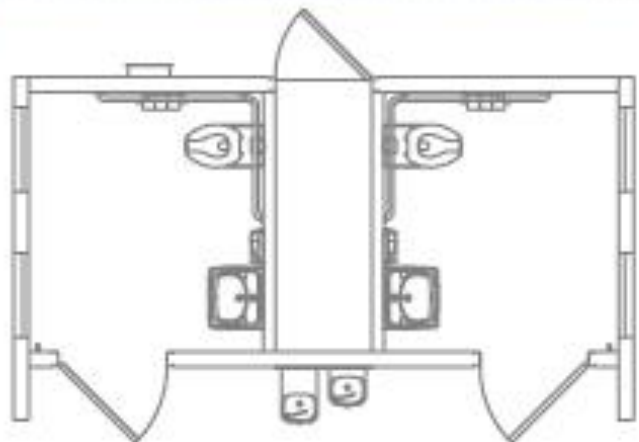


DENALI - 10'3" x 17'



- 2 single user restrooms
- 2 ADA toilets
- 2 sinks
- ADA grab bars
- Interior and exterior lights






FLUSH RESTROOM





DENALI
STANDARD BUILDING

NOTE: ADDED-COST OPTIONS SHOWN. THESE OPTIONS INCLUDE:
 SKYLIGHTS, HAND DRYERS & DRINKING FOUNTAIN.



-  FLUSH RESTROOM
-  
-  

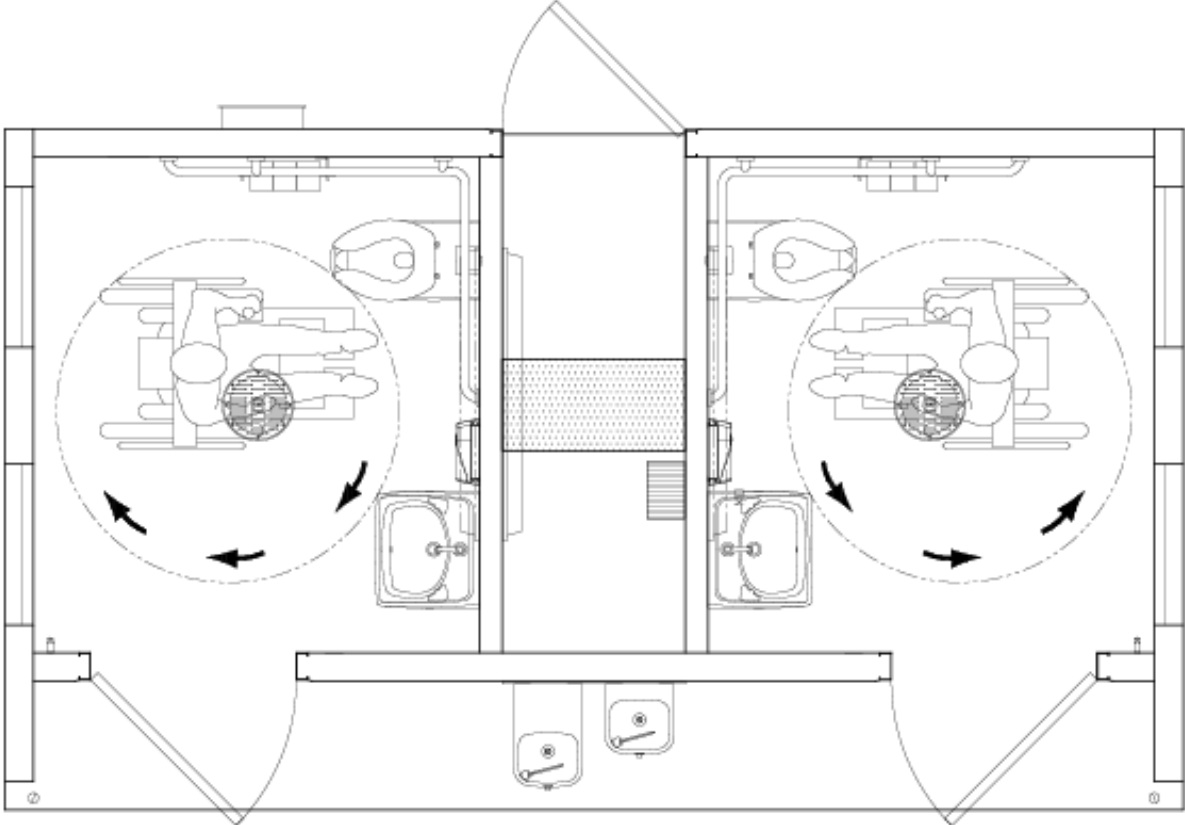


DENALI
STANDARD BUILDING

NOTE: ADDED-COST OPTIONS SHOWN. THESE OPTIONS INCLUDE: SKYLIGHTS, HAND DRYERS & DRINKING FOUNTAIN.



Standard Floor Plan



Added cost options include drinking fountain and hand dryers.

CXT® restroom, shower, concession, and multipurpose buildings are delivered to your site ready to use and require no construction, concrete blocks or tilt-up panels that increase installation time. Our structures are manufactured with high-strength precast concrete floors, walls and roofs and are aesthetically designed in multiple floor plans, colors, and textures. Our vandal-resistant engineering minimizes abusive wear and maximizes our structures' service life under extreme conditions caused by flood, snow, wind and zone-4 seismic loads.

CXT buildings meet all local and state building codes, and A.D.A. specifications.

SIMPLE TO INSTALL

- Minimal site preparation required
- Pre-plumbed and wired for efficient installation

READY TO USE

- Prefabricated and delivered complete and ready to use
- Can typically be in use on the day of installation

EASY TO MAINTAIN

- Interiors resist abusive wear
- Quickly cleaned with warm soapy water and a brush



CONSTRUCTION

- 4" thick steel-reinforced concrete walls
- 5" thick steel-reinforced concrete roof and floor
- Vandal-resistant components
- Can withstand extreme conditions caused by flood, snow, wind and zone-4 seismic loads