

PRELIMINARY
NOT FOR CONSTRUCTION

project title:

**N. WILLAMETTE, E. MACY, & N. HARRISON
RECONSTRUCTION PROJECT**
CITY OF COBURG
91136 N. WILLAMETTE STREET
COBURG, OREGON

revisions:

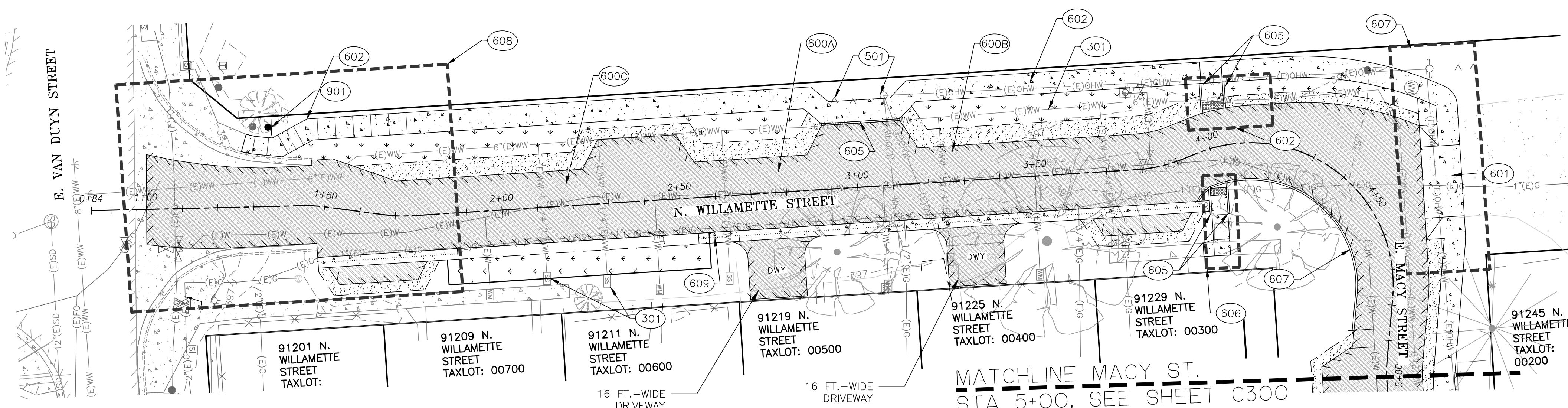
date: FEB. 13, 2024
drawn by: ZZ
designer: JLL
project no: 21-004B.1

N WILLAMETTE ST.
STREET PLAN &
PROFILE
STA. 1+00 - 5+00

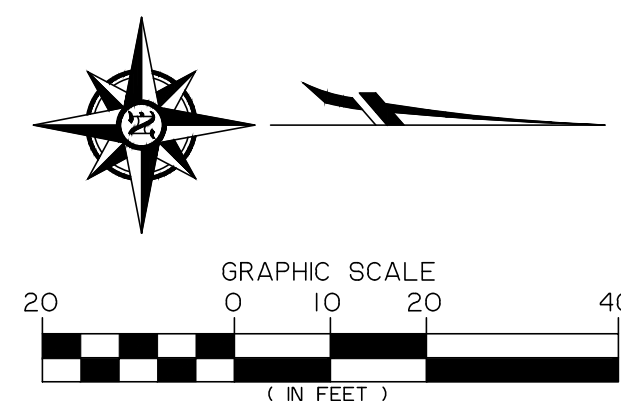
sheet:
C200

CONSTRUCTION NOTES

- 300—RELOCATE EXISTING WASTEWATER BOX.
- 301—EXISTING WASTEWATER LINE TO REMAIN IN SERVICE.
- 501—PROTECT EXTG. UTILITY POLE AND ANCHORS.
- 600A—CONSTRUCT PAVEMENT SECTION, STORMWATER FACILITY, AND 6FT-WIDE SIDEWALK PER TYPICAL SECTION A, SHEET C201.
- 600B—CONSTRUCT PAVEMENT SECTION, STORMWATER FACILITY, AND 6FT-WIDE SIDEWALK PER TYPICAL SECTION B, SHEET C201.
- 600C—CONSTRUCT PAVEMENT SECTION, STORMWATER FACILITY, AND 6FT-WIDE SIDEWALK PER TYPICAL SECTION C, SHEET C201.
- 601—CONSTRUCT CONCRETE DRIVEWAY PER CITY OF COBURG DETAIL ST-106, SHEET C500. SEE DETAIL 4 ON SHEET C202 FOR SPOT ELEVATIONS AND DIMENSIONS. PLACE 6" MINIMUM THICKNESS OF 1"-0" CRUSHED QUARRY ROCK.
- 602—CONSTRUCT SIDEWALK AND ADA RAMP. PLACE 4" MINIMUM THICKNESS OF 1"-0" CRUSHED QUARRY ROCK. SEE DETAIL ST-001 AND ST-002, SHEET C500.
- 604—CONTRACTOR TO CONSTRUCT 4" THICK CONCRETE SIDEWALK AND CONNECT TO EXISTING CONCRETE SIDEWALK. SEE DETAIL 1 ON SHEET C202 FOR DIMENSIONS AND SPOT ELEVATIONS.
- 605—CONSTRUCT TYPICAL VERTICAL (STRAIGHT) CURB PER DETAIL ST-001 ON SHEET C500.
- 606—CONSTRUCT SIDEWALK AND ADA RAMP. PLACE 4" MINIMUM THICKNESS OF 1"-0" CRUSHED QUARRY ROCK. SEE DETAIL 3, SHEET 202 FOR DIMENSIONS AND SPOT ELEVATIONS.
- 607—CONSTRUCT INTERSECTION CURB RETURN W/ TYPICAL VERTICAL (STRAIGHT) CURB PER CITY OF COBURG DETAIL ST-108 AND ST-001.
- 608—CONSTRUCT PAVEMENT PER DETAIL 1 ON SHEET C202.
- 609—CONSTRUCT SYMMETRICAL "V" TYPE GUTTER PER OREGON STANDARD DRAWING DETAIL RD700 ON SHEET C500.
- 901—CONTRACTOR TO RE-INSTALL EXISTING SIGN AT BACK OF SIDEWALK OR LOCATION SHOWN.



1 PLAN VIEW: PROPOSED NORTH WILLAMETTE STREET
SCALE: 1" = 20'



PRELIMINARY
NOT FOR CONSTRUCTION

project title:

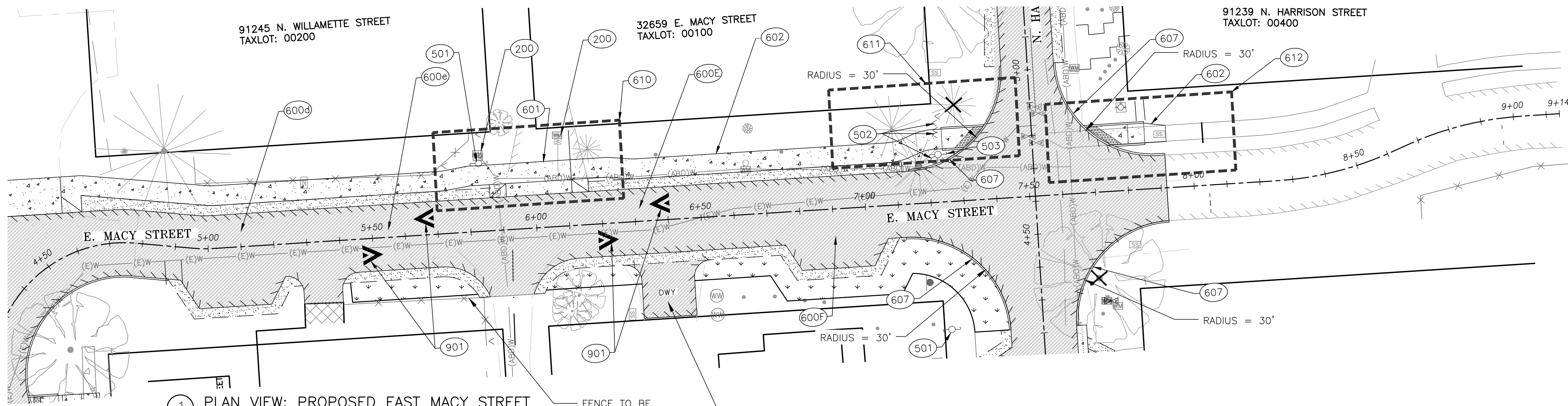
**N. WILLAMETTE, E. MACY, & N. HARRISON
RECONSTRUCTION PROJECT**
CITY OF COBURG
91136 N. WILLAMETTE STREET
COBURG, OREGON

revisions:

date: FEB. 13, 2024
drawn by: ZZ
designer: JLL
project no: 21-004B.1

E. MACY ST.
STREET PLAN &
PROFILE
STA. 5+00 - 8+70

sheet:
C300



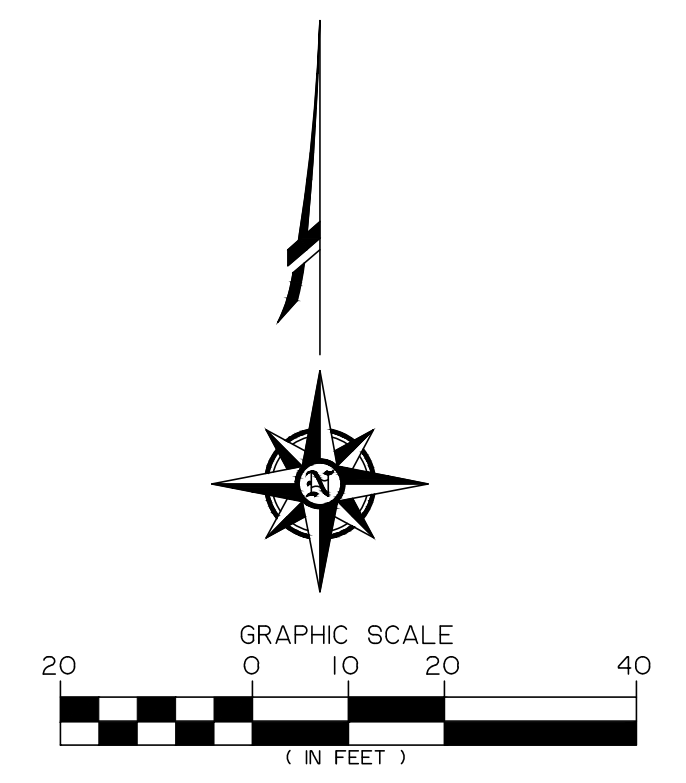
1 PLAN VIEW: PROPOSED EAST MACY STREET
SCALE: 1" = 20'

FENCE TO BE RELOCATED TO ACCOMMODATE PROPOSED STORMWATER FACILITY AS NEEDED DURING FINAL DESIGN.

16 FT.-WIDE DRIVEWAY

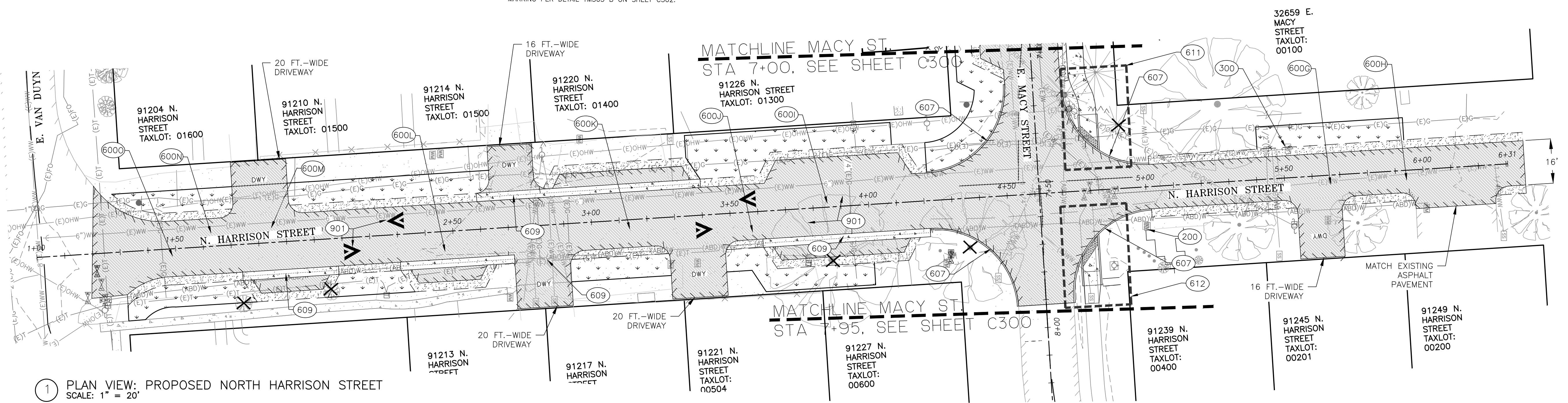
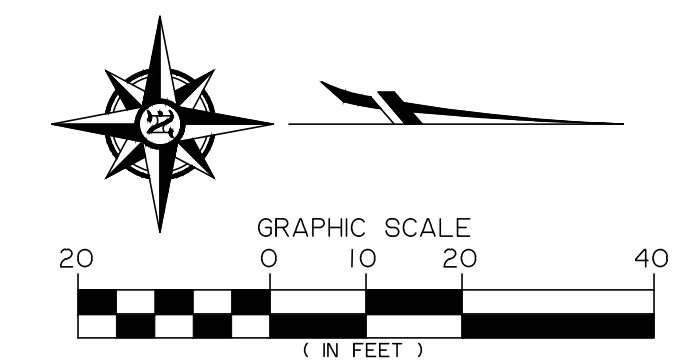
CONSTRUCTION NOTES

- 200—CONTRACTOR TO ADJUST RIM ELEV. OF EXTG. WATER METER.
- 501—PROTECT UTILITY POLE (PACIFICORP 40T 01316003 330906) AND FITTINGS.
- 502—REMOVE EXISTING UTILITY POLE. PACIFIC POWER TO COORDINATE WITH CONTRACTOR TO REMOVE UTILITY POLE AND RELOCATE GUY ANCHORS.
- 503—PROTECT UTILITY POLE (PACIFICORP 01316003 330900).
- 600D—CONSTRUCT PAVEMENT SECTION, STORMWATER FACILITY, AND 6FT-WIDE SIDEWALK PER TYPICAL SECTION D, SHEET C301.
- 600E—CONSTRUCT PAVEMENT SECTION, STORMWATER FACILITY, AND 6FT-WIDE SIDEWALK PER TYPICAL SECTION E, SHEET C301.
- 600F—CONSTRUCT PAVEMENT SECTION, STORMWATER FACILITY, AND 6FT-WIDE SIDEWALK PER TYPICAL SECTION F, SHEET C301.
- 601—CONSTRUCT CONCRETE DRIVEWAY PER CITY OF COBURG DETAIL ST-106, SHEET C500. SEE DETAIL 4 ON SHEET C202 FOR SPOT ELEVATIONS AND DIMENSIONS. PLACE 6" MINIMUM THICKNESS OF 1"-0" CRUSHED QUARRY ROCK.
- 602—CONSTRUCT SIDEWALK AND ADA RAMP. PLACE 4" MINIMUM THICKNESS OF 1"-0" CRUSHED QUARRY ROCK. SEE DETAIL ST-001 AND ST-002, SHEET C500.
- 607—CONSTRUCT INTERSECTION CURB RETURN W/ TYPICAL VERTICAL (STRAIGHT) CURB PER CITY OF COBURG DETAIL ST-108 AND ST-001.
- 609—CONSTRUCT SYMMETRICAL "V" TYPE GUTTER PER OREGON STANDARD DRAWING DETAIL RD700 ON SHEET C500.
- 610—CONSTRUCT CONCRETE DRIVEWAY PER CITY OF COBURG DETAIL ST-106, SHEET C500. SEE DETAIL 1 ON SHEET 302 FOR SPOT ELEVATIONS AND DIMENSIONS. PLACE 6" MINIMUM THICKNESS OF 1"-0" CRUSHED QUARRY ROCK.
- 611—CONSTRUCT ADA CURB RAMP AND SIDEWALK PER DETAIL 2 ON SHEET C302.
- 612—CONSTRUCT ADA CURB RAMP AND SIDEWALK PER DETAIL 3 ON SHEET C302.
- 613—CONSTRUCT BUMP OUT PARKING PER DETAIL 4 ON SHEET C302.
- 614—AC STREET CUT PER DETAIL 219 ON SHEET C502.
- 901—CONSTRUCT SPEED CUSHION AND HUMP AND INSTALL SPEED HUMP MARKING PER DETAIL TMS03 B ON SHEET C502.



CONSTRUCTION NOTES

- (200) CONTRACTOR TO ADJUST RIM ELEV. OF EXTG. WATER METER.
- (300) CONTRACTOR TO ADJUST RIM ELEV. OF EXTG. WASTEWATER BOX.
- (501) CONTRACTOR TO COORDINATE WORK WITH PACIFIC POWER TO RELOCATE UTILITY POLE AND ANCHORS.
- (600G) CONSTRUCT PAVEMENT SECTION AND STORMWATER FACILITY PER TYPICAL SECTION G, SHEET C401.
- (600H) CONSTRUCT PAVEMENT SECTION AND STORMWATER FACILITY PER TYPICAL SECTION H, SHEET C401.
- (600I) CONSTRUCT PAVEMENT SECTION AND STORMWATER FACILITY PER TYPICAL SECTION I, SHEET C302.
- (600J) CONSTRUCT PAVEMENT SECTION AND STORMWATER FACILITY PER TYPICAL SECTION J, SHEET C401.
- (600K) CONSTRUCT PAVEMENT SECTION AND STORMWATER FACILITY PER TYPICAL SECTION K, SHEET C401.
- (600L) CONSTRUCT PAVEMENT SECTION AND STORMWATER FACILITY PER TYPICAL SECTION L, SHEET C402.
- (600M) CONSTRUCT PAVEMENT SECTION AND STORMWATER FACILITY PER TYPICAL SECTION M, SHEET C402.
- (600N) CONSTRUCT PAVEMENT SECTION AND STORMWATER FACILITY PER TYPICAL SECTION N, SHEET C402.
- (607) CONSTRUCT INTERSECTION CURB RETURN W/ TYPICAL VERTICAL (STRAIGHT) CURB PER CITY OF COBURG DETAIL ST-108 AND ST-001.
- (609) CONSTRUCT SYMMETRICAL "V" TYPE GUTTER PER OREGON STANDARD DRAWING DETAIL RD700 ON SHEET C500.
- (611) CONSTRUCT ADA CURB RAMP AND SIDEWALK PER DETAIL 2 ON SHEET C302.
- (612) CONSTRUCT ADA CURB RAMP AND SIDEWALK PER DETAIL 3 ON SHEET C302.
- (613) CONSTRUCT BUMP OUT PARKING PER DETAIL 4 ON SHEET C302.
- (901) CONSTRUCT SPEED CUSHION AND HUMP AND INSTALL SPEED HUMP MARKING PER DETAIL TM503 B ON SHEET C502.



1 PLAN VIEW: PROPOSED NORTH HARRISON STREET
SCALE: 1" = 20'

PRELIMINARY
NOT FOR CONSTRUCTION

project title:

**N. WILLAMETTE, E. MACY, & N. HARRISON
RECONSTRUCTION PROJECT**
CITY OF COBURG
91136 N. WILLAMETTE STREET
COBURG, OREGON

revisions:

date: FEB. 13, 2024
drawn by: ZZ
designer: JLL
project no: 21-0048.1

N. HARRISON ST.
STREET PLAN &
PROFILE
STA. 0+00 - 6+30

sheet:
C400