

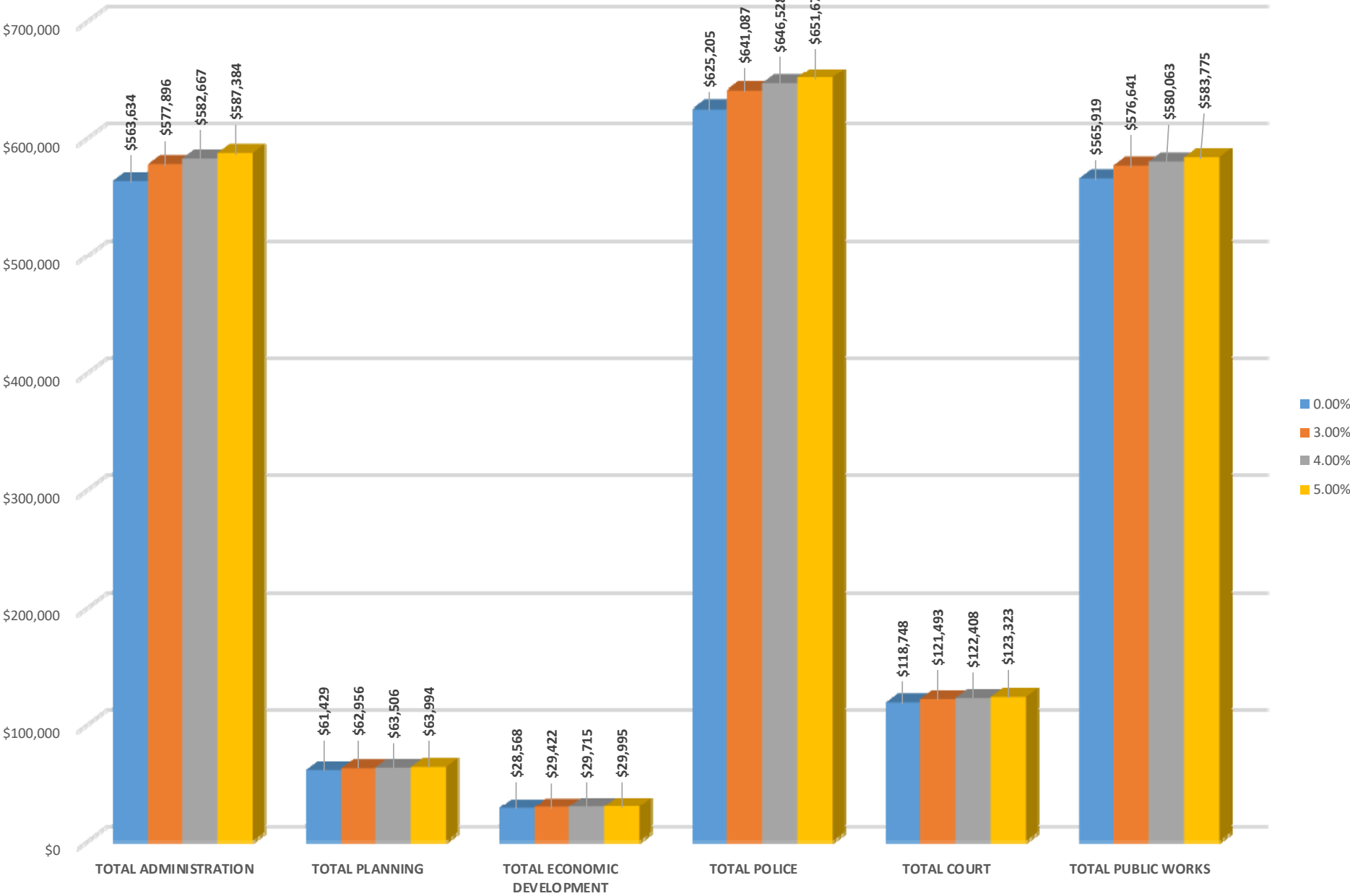
City of Coburg Payroll COLA Options  
FY 2022-2023

Department	0.0%	3.0%	Difference 0.0%-3.0%	4.0%	Difference 0.0%-4.0%	5.0%	Difference 0.0%-5.0%
<b>TOTAL ADMINISTRATION</b>	\$563,634	\$577,896	\$14,262	\$582,667	\$19,033	\$587,384	\$23,750
<b>TOTAL PLANNING</b>	\$61,429	\$62,956	\$1,527	\$63,506	\$2,076	\$63,994	\$2,565
<b>TOTAL ECONOMIC DEVELOPMENT</b>	\$28,568	\$29,422	\$854	\$29,715	\$1,146	\$29,995	\$1,427
<b>TOTAL POLICE</b>	\$625,205	\$641,087	\$15,882	\$646,528	\$21,323	\$651,671	\$26,466
<b>TOTAL COURT</b>	\$118,748	\$121,493	\$2,745	\$122,408	\$3,660	\$123,323	\$4,575
<b>TOTAL PUBLIC WORKS</b>	\$565,919	\$576,641	\$10,722	\$580,063	\$14,144	\$583,775	\$17,856
<b>TOTALS</b>	\$1,963,503	\$2,009,496	\$45,992	\$2,024,887	\$61,383	\$2,040,143	\$76,640

**City of Coburg Payroll COLA Options  
FY 2022-2023**

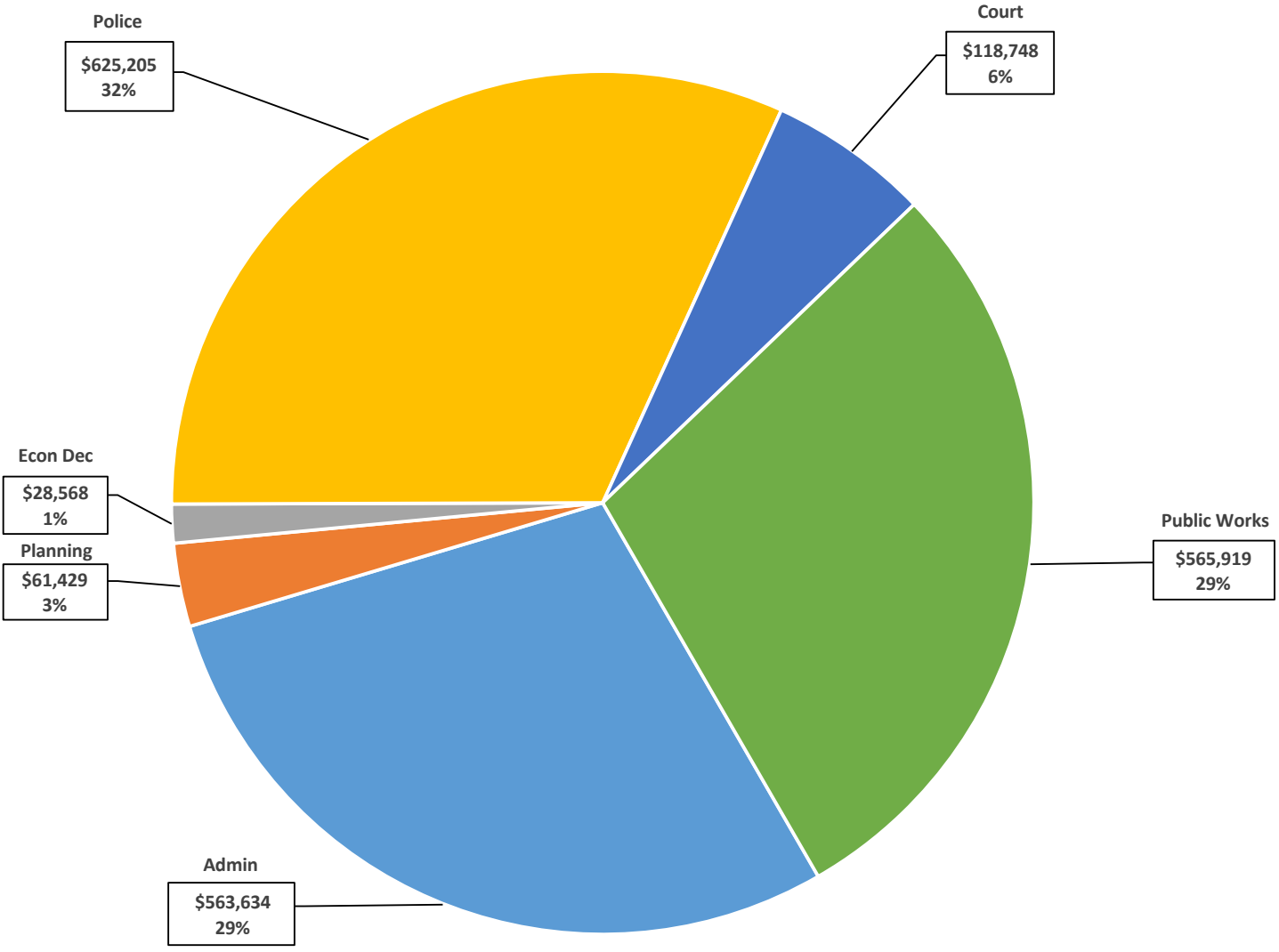
Department	0% Increase	3% Increase	Difference 0.0%-3.0%	4% Increase	Difference 0.0%-4.0%	5% Increase	Difference 0.0%-5.0%
<b>TOTAL ADMINISTRATION</b>	\$563,634	\$577,896	\$14,262	\$582,667	\$19,033	\$587,384	\$23,750
<b>TOTAL PLANNING</b>	\$61,429	\$62,956	\$1,527	\$63,506	\$2,076	\$63,994	\$2,565
<b>TOTAL ECONOMIC DEVELOPMENT</b>	\$28,568	\$29,422	\$854	\$29,715	\$1,146	\$29,995	\$1,427
<b>TOTAL POLICE</b>	\$625,205	\$641,087	\$15,882	\$646,528	\$21,323	\$651,671	\$26,466
<b>TOTAL COURT</b>	\$118,748	\$121,493	\$2,745	\$122,408	\$3,660	\$123,323	\$4,575
<b>TOTAL PUBLIC WORKS</b>	\$565,919	\$576,641	\$10,722	\$580,063	\$14,144	\$583,775	\$17,856
<b>TOTALS</b>	<b>\$1,963,503</b>	<b>\$2,009,496</b>	<b>\$45,992</b>	<b>\$2,024,887</b>	<b>\$61,383</b>	<b>\$2,040,143</b>	<b>\$76,640</b>

# Compare By Department



# Payroll Department Percentage 0.0%

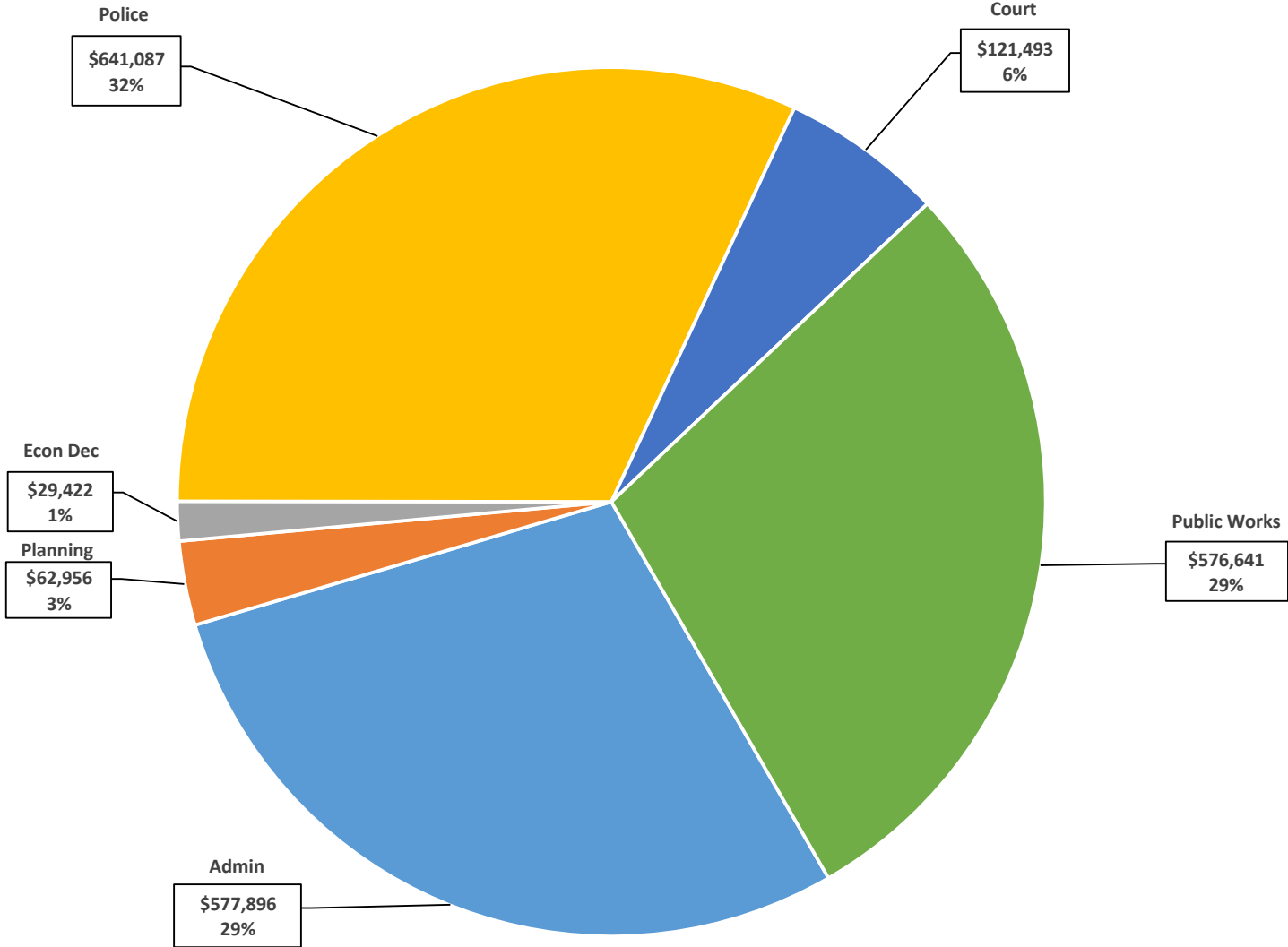
Total Payroll- \$1,963,503



■ TOTAL ADMINISTRATION ■ TOTAL PLANNING ■ TOTAL ECONOMIC DEVELOPMENT ■ TOTAL POLICE ■ TOTAL COURT ■ TOTAL PUBLIC WORKS

# Payroll Department Percentage 3.0%

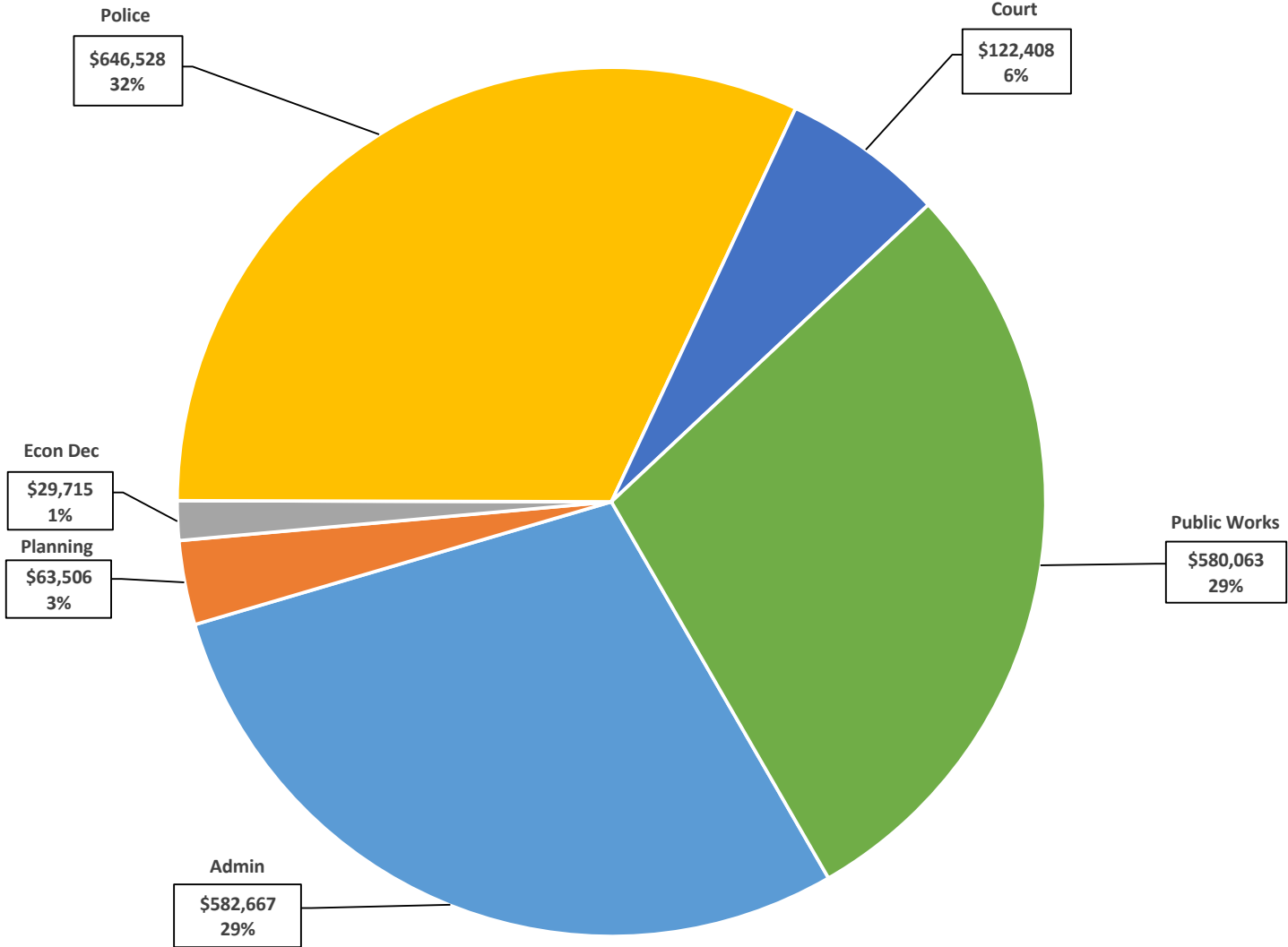
Total Payroll- \$2,009,496



- TOTAL ADMINISTRATION
- TOTAL PLANNING
- TOTAL ECONOMIC DEVELOPMENT
- TOTAL POLICE
- TOTAL COURT
- TOTAL PUBLIC WORKS

# Payroll Department Percentage 4.0%

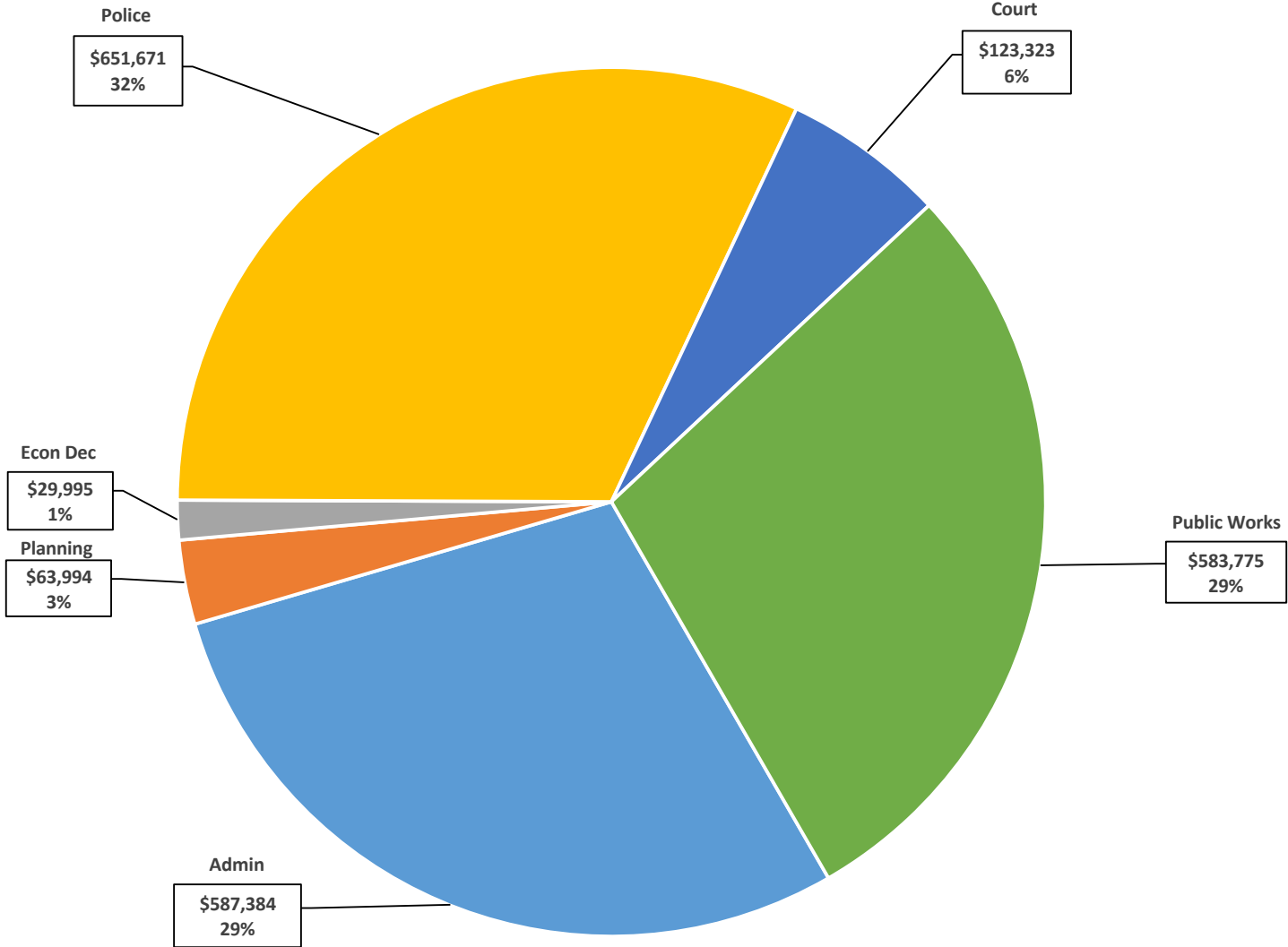
Total Payroll- \$2,024,887



- TOTAL ADMINISTRATION
- TOTAL PLANNING
- TOTAL ECONOMIC DEVELOPMENT
- TOTAL POLICE
- TOTAL COURT
- TOTAL PUBLIC WORKS

# Payroll Department Percentage 5.0%

Total Payroll- \$2,040,143



■ TOTAL ADMINISTRATION ■ TOTAL PLANNING ■ TOTAL ECONOMIC DEVELOPMENT ■ TOTAL POLICE ■ TOTAL COURT ■ TOTAL PUBLIC WORKS