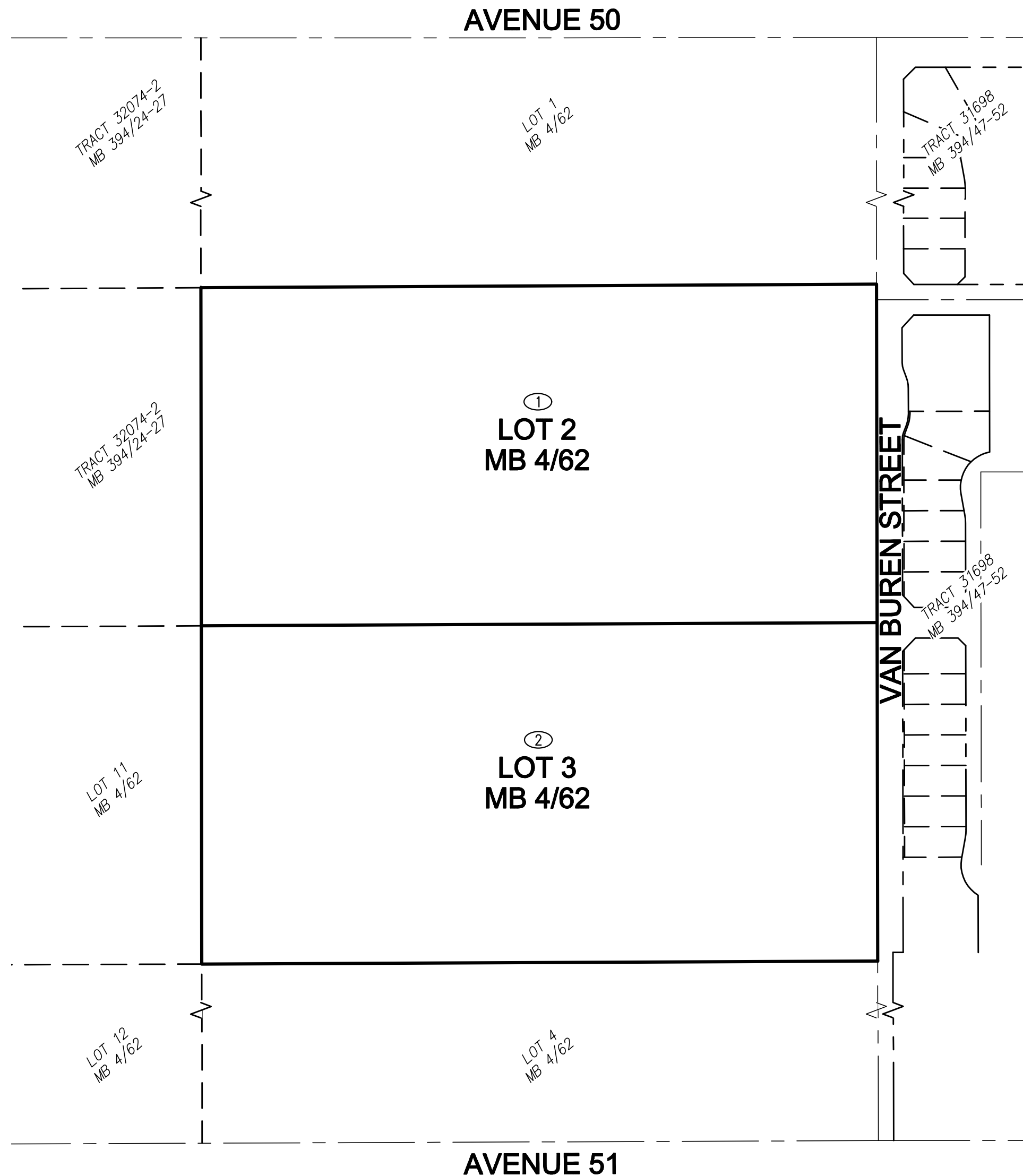
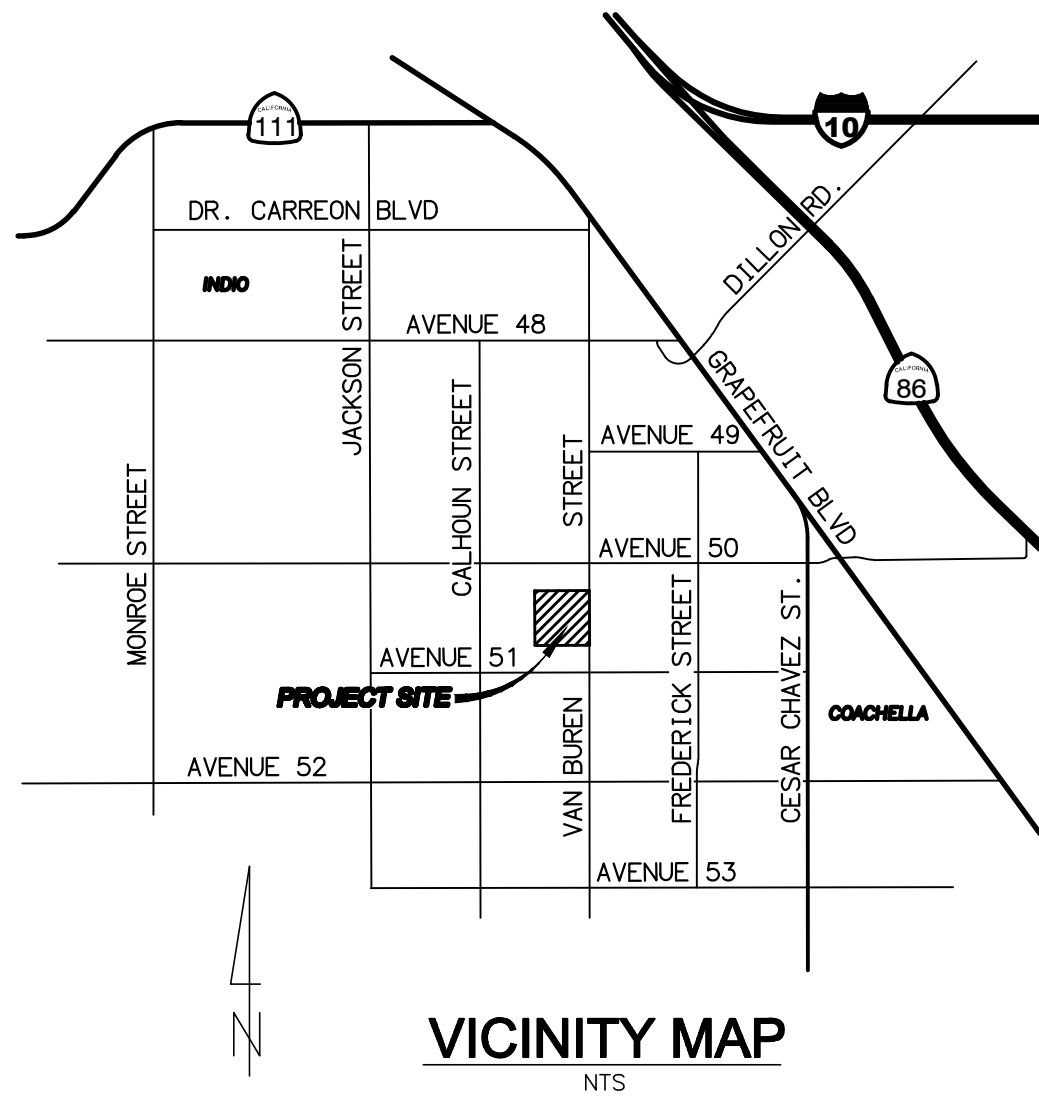


IN THE CITY OF COACHELLA, COUNTY OF RIVERSIDE, STATE OF CALIFORNIA

# ANNEXATION MAP NO. XX TRACTS 38557 AND 38557-1 COMMUNITY FACILITIES DISTRICT 2005-1 (LAW ENFORCEMENT, FIRE AND PARAMEDIC SERVICES)

NE QUARTER OF SECTION 1, TOWNSHIP 6 SOUTH, RANGE 7 EAST, SAN BERNARDINO MERIDIAN



FILED IN THE OFFICE OF THE CITY CLERK THIS \_\_\_\_\_ DAY OF \_\_\_\_\_, 20\_\_\_\_.

I HEREBY CERTIFY THAT THE WITHIN MAP SHOWING PROPOSED BOUNDARIES OF ANNEXATION NO. XX, TRACTS 38557 AND 38557-1, TO COMMUNITY FACILITIES DISTRICT NO. 2005-1 (LAW ENFORCEMENT, FIRE AND PARAMEDIC SERVICES), CITY OF COACHELLA, COUNTY OF RIVERSIDE, STATE OF CALIFORNIA, WAS APPROVED BY THE CITY COUNCIL OF THE CITY OF COACHELLA AT A REGULAR MEETING THEREOF, HELD ON \_\_\_\_\_ DAY OF \_\_\_\_\_, 20\_\_\_\_, BY ITS RESOLUTION NO. \_\_\_\_\_

BY: \_\_\_\_\_  
CITY CLERK  
CITY OF COACHELLA

FILED THIS \_\_\_\_\_ DAY OF \_\_\_\_\_, 20\_\_\_\_, AT THE HOUR OF \_\_\_\_\_ O'CLOCK \_\_\_\_ M. IN THE BOOK \_\_\_\_\_ PAGES \_\_\_\_\_ OF MAPS OF ASSESSMENTS AND COMMUNITY FACILITIES DISTRICTS AND AS INSTRUMENT NO. \_\_\_\_\_ IN THE OFFICE OF THE COUNTY RECORDERS IN THE COUNTY OF RIVERSIDE, STATE OF CALIFORNIA.

BY: \_\_\_\_\_  
COUNTY RECORDER  
COUNTY OF RIVERSIDE  
STATE OF CALIFORNIA

REFERENCE IS MADE TO THAT BOUNDARY MAP OF COMMUNITY FACILITIES DISTRICT NO. 2005-1 (LAW ENFORCEMENT, FIRE AND PARAMEDIC SERVICES) OF THE CITY OF COACHELLA RECORDED WITH THE RIVERSIDE COUNTY RECORDER'S OFFICE ON \_\_\_\_\_, IN BOOK \_\_\_\_\_ OF MAPS OF ASSESSMENT AND COMMUNITY FACILITIES DISTRICTS, PAGE \_\_\_\_\_, AS INSTRUMENT NO. \_\_\_\_\_.

THE LINES AND DIMENSIONS OF EACH LOT OR PARCEL SHOWN ON THIS DIAGRAM SHALL BE THOSE LINES AND DIMENSIONS AS SHOWN ON THE RIVERSIDE COUNTY ASSESSORS MAPS FOR THOSE PARCELS LISTED.

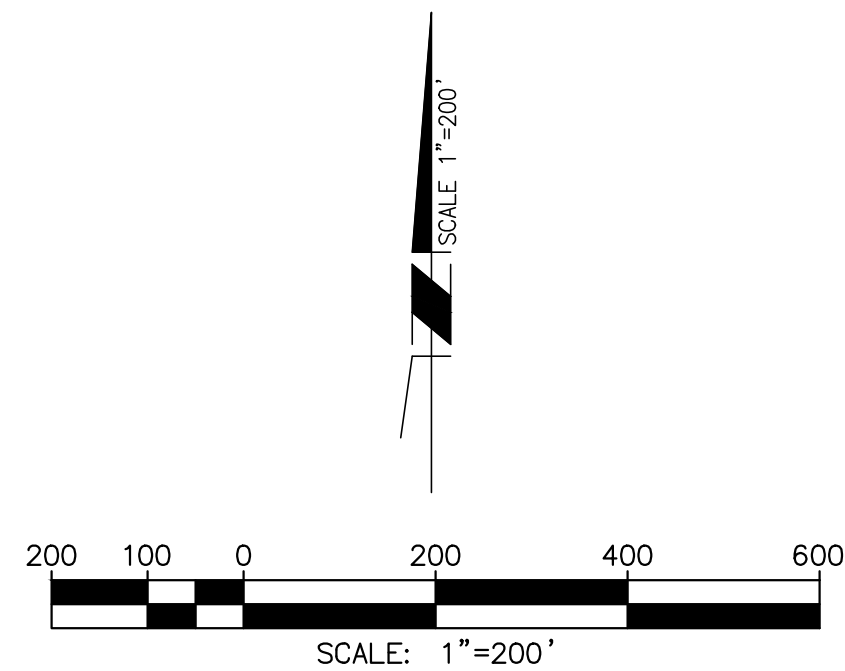
THE RIVERSIDE COUNTY ASSESSORS MAPS SHALL GOVERN FOR ALL DETAILS CONCERNING THE LINES AND DIMENSIONS OF SUCH LOTS OR PARCELS.

ASMT. NO.	ASSESSOR'S PARCEL NO.	ACREAGE
1	779-280-002	19.80
2	779-320-001	19.55

**LEGEND**

— ANNEXATION BOUNDARY  
① ASSESSMENT NUMBER

**OWNER**  
PULTE HOME COMPANY, LLC  
27401 LOS ALTOS, SUITE 400  
MISSION VIEJO, CA 92691



**Michael Baker  
INTERNATIONAL**

75410 Gerald Ford Drive, Suite 100  
Palm Desert, CA 92211  
MBAKERINTL.COM  
Phone: (760) 346-7481