



Coachella Rail Station Feasibility Study and Integrated Land Use and Transit Network

City Council Presentation



COACHELLA
RAIL STATION
FEASIBILITY STUDY

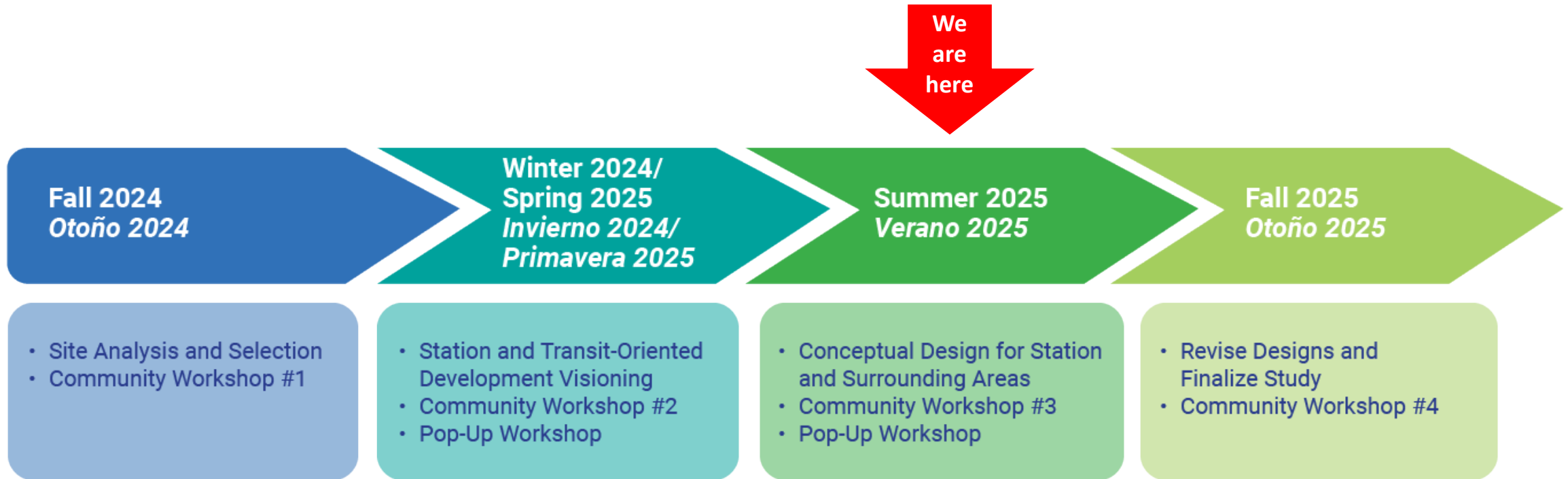
July 23, 2025

Study Purposes

- Evaluate potential Coachella locations for rail station site and layover facility
- Identify the city's preferred station location
- For the city's preferred location, develop:
 - Preliminary engineering plans, architectural drawings, and connectivity plans for the rail station
 - Transit-oriented community plans and economic development strategies for the surrounding areas



Study Process and Timeline



Coachella Valley Rail (CV Rail) Project

The Riverside County Transportation Commission (RCTC) is leading an effort to initiate passenger rail service between Los Angeles and the Coachella Valley, including a station in the City of Coachella



CV Rail and the Coachella Station Study

- Final selection of the station locations will be determined in the NEPA/CEQA CV Rail Tier II/Project Environmental Document¹
- This study will be utilized to help determine the final selection of the preferred alternative during formal NEPA/CEQA process
- Location of tracks for CV Rail are subject to negotiations and agreements with the host railroad
- This study does not commit the City to the approval or construction of any particular station location

1. Led by RCTC under the oversight of the Federal Railroad Administration and Caltrans Division of Rail.



City's Preferred Station Site

Site 2 in Pueblo Viejo is recommended because it has good accessibility, the most supportive land use, and the fewest engineering constraints.



What We've Heard

Top 5 Station Area Land Use Priorities

1. Coffee Shops & Boutiques
2. Mixed-use Residential and Retail
3. Restaurants
4. Open Space
5. Cultural & Entertainment

Top 5 Preferred Station Features

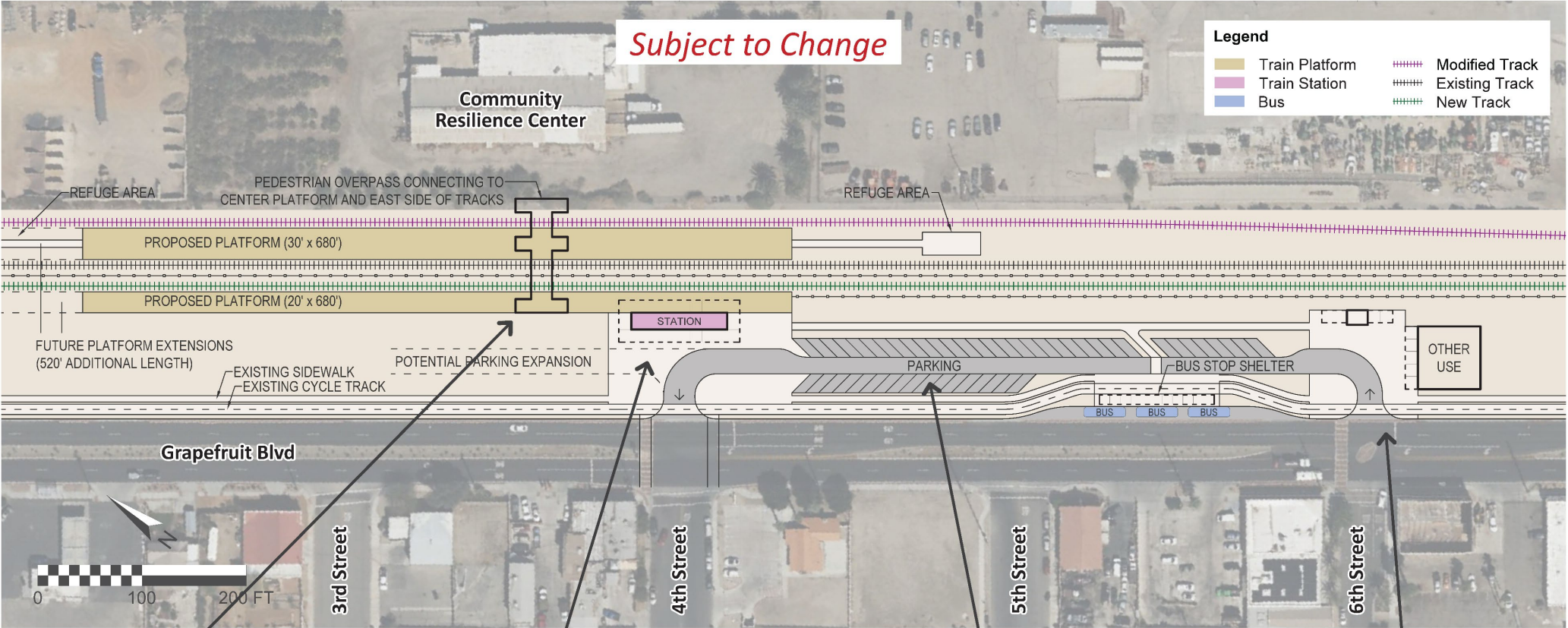
1. Lighting
2. Shaded Waiting Areas
3. Security Cameras
4. Ramps
5. Seating Areas



Historical & Cultural Design Ideas

- Reflect the region's farmworker heritage and Latino cultural roots
- Honor local Indigenous communities through land acknowledgments
- Feature murals and public art by local artist
- Incorporate natural desert elements such as palm trees and date palms

Potential Station Layout



Bridge over Tracks



Station Terminates 4th St



Parking Grove



Terminating 6th St



Potential Station Area Design Concepts



6th Street & Grapefruit Blvd



4th Street & Station Exit

What We've Heard:

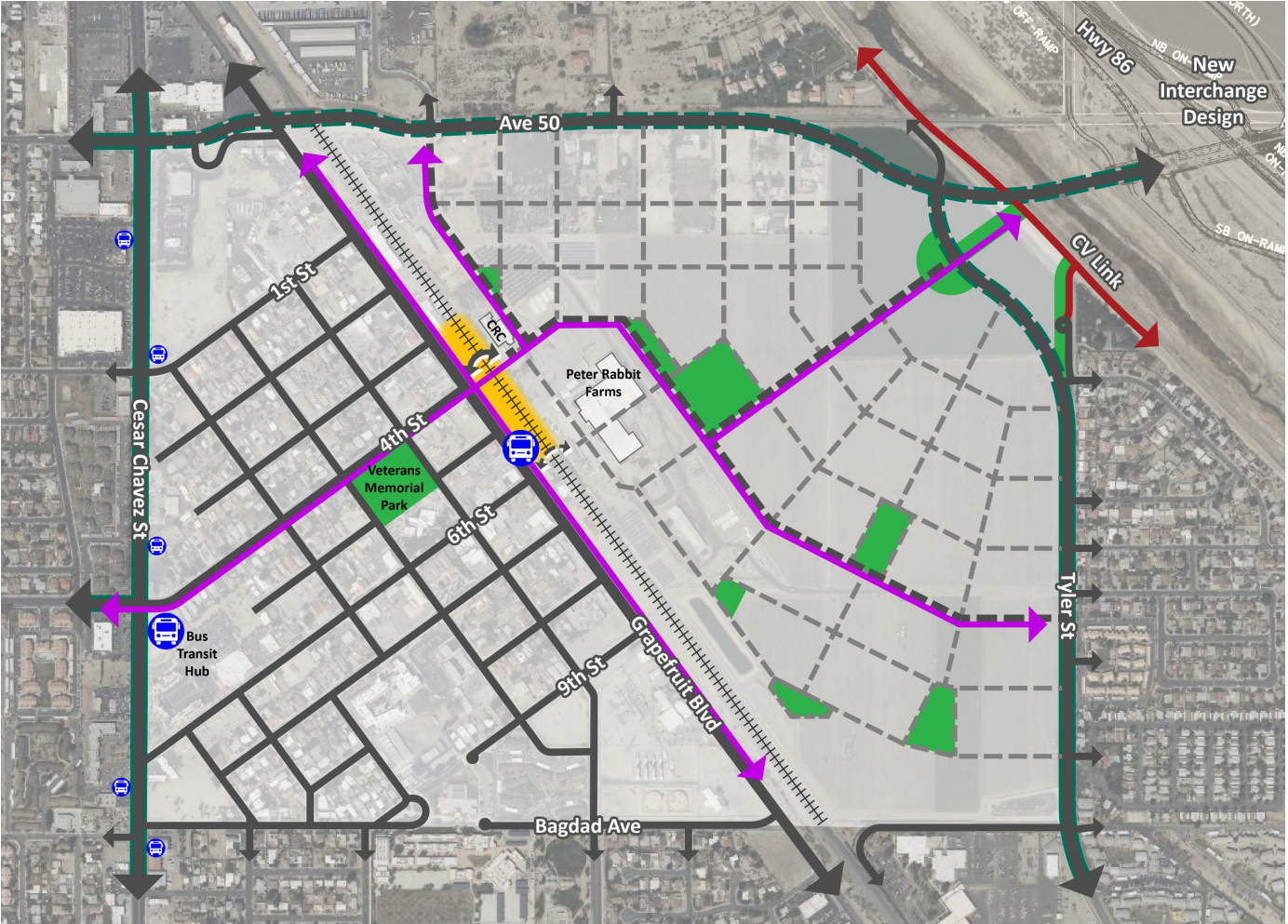
"Something that shows what Coachella Valley is about. Very desert themed."

"Murals and architectural design that represents the community and spaces that can be used for community interaction"

Pueblo Viejo and Future Downtown Expansion Area Potential Mobility Framework

LEGEND

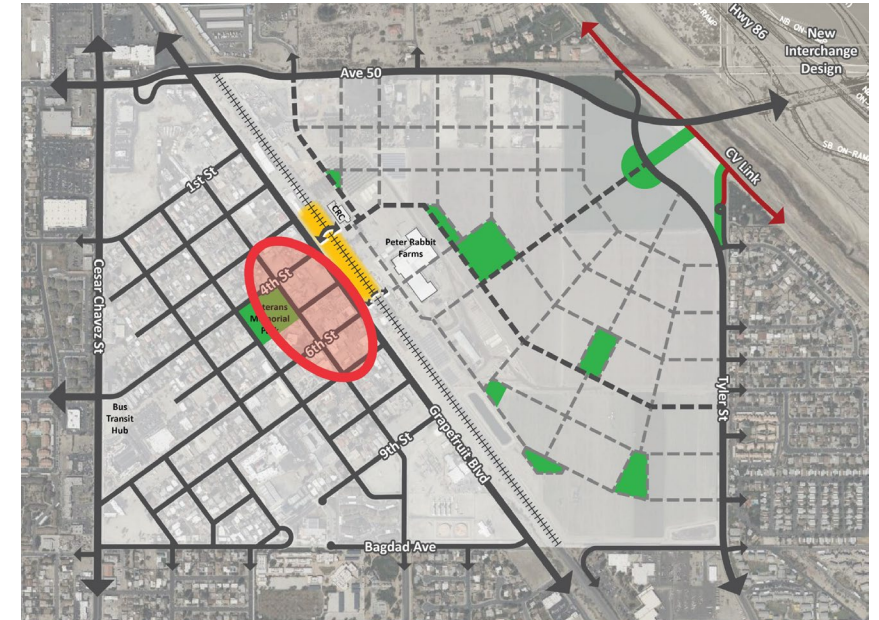
- Existing Streets
- Potential Primary Street Network
- Potential Secondary Street Network
- Rail Lines
- Train Station and Bus Stop Area
- Open Space (Green and/or Plaza)
- Pedestrian Bridge Associated with Station
- Future Goal: additional east-west connectivity, such as a pedestrian bridge near 6th Street
- Bus Stops
- CV Link
- Primary Bike Routes to Station
- Existing Bike Routes at Periphery
- Future Bike Routes at Periphery



What We’ve Heard:

“We need pedestrian crossings over or under tracks...need to connect to transit options like bus, rideshare or bicycle”

Concepts for Active Blocks Near the Station

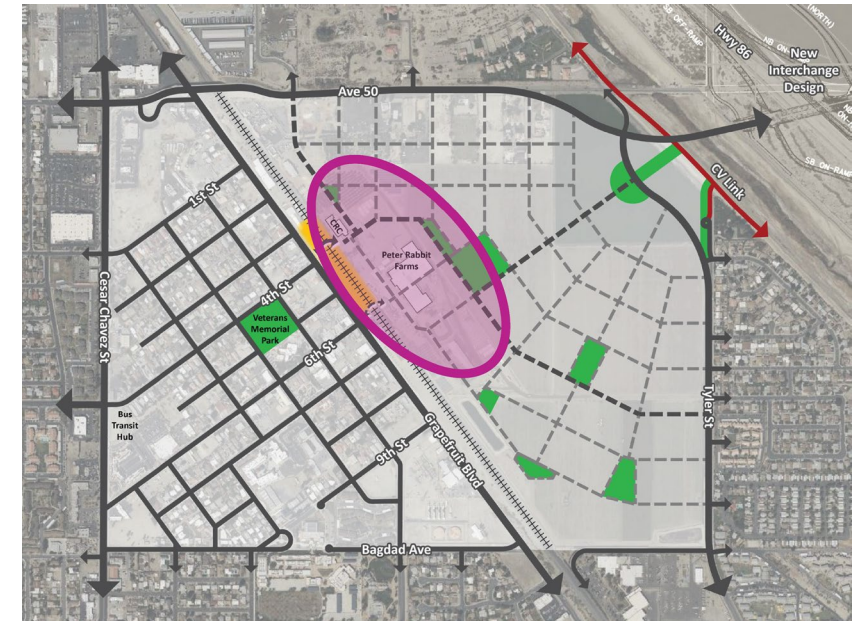


Community's Most Preferred Building Types:

1. Coffee Shops & Boutiques
2. Mixed-Use Residential & Retail
3. Restaurants



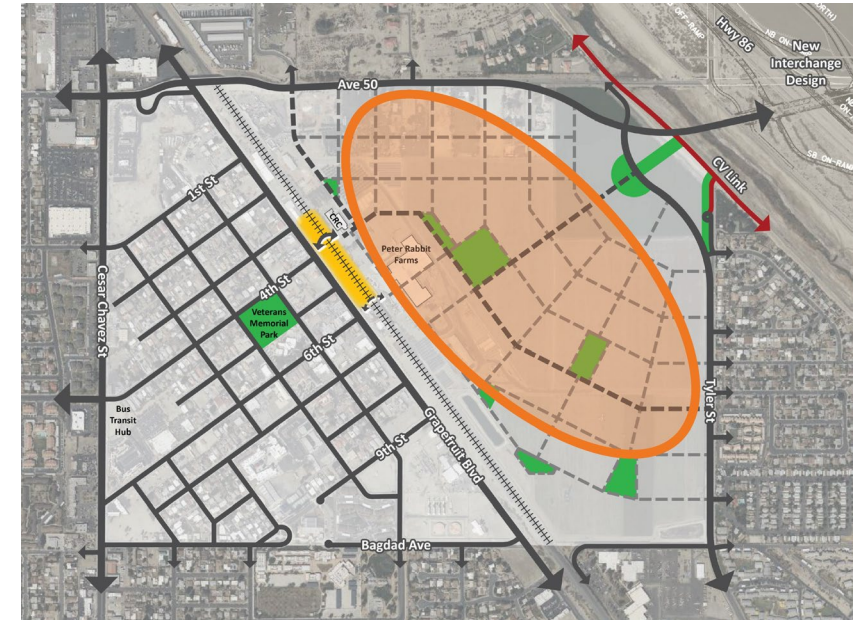
Concepts for the East Side of the Tracks



What We've Heard:

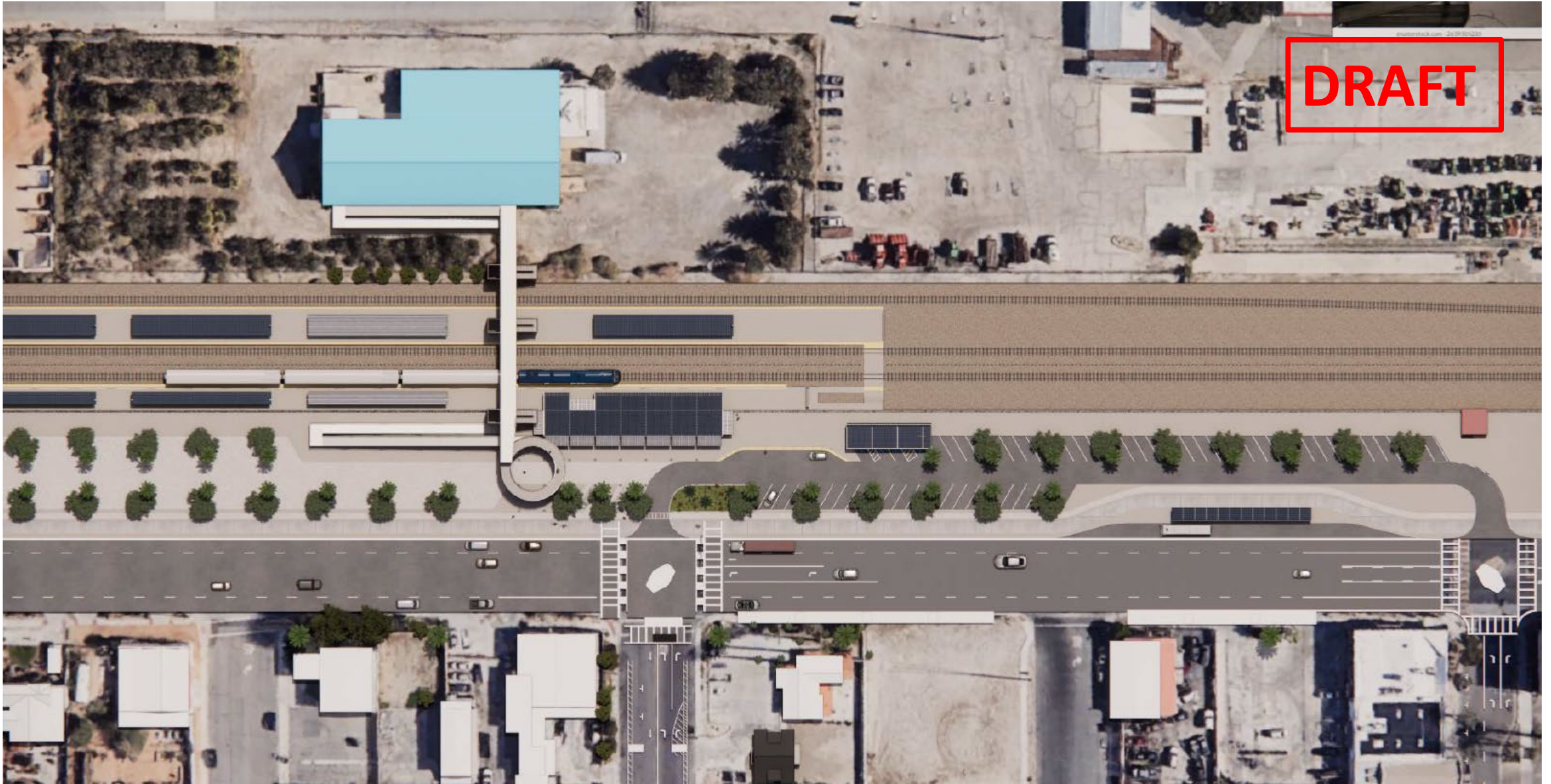
"If you want to put housing in the other side of the tracks, you'll have to put restaurants and shops as a buffer zone to the railroad."

Longer-Term: Downtown East Development Concepts



What We've Heard:
"I like that this site is very central to downtown and can increase economic development and future growth."

Preliminary Station Design in Process – Draft Renderings



Preliminary Station Design in Process – Draft Renderings



Preliminary Station Design in Process – Draft Renderings



Preliminary Station Design in Process – Draft Renderings





Next Steps

- Host Community Workshop at Coachella Public Library - 7/24 from 4 to 6 p.m.
- Refine Station Design concepts
- Prepare preliminary engineering plans, cost estimates, land use plans, and economic development strategies



Stay Informed & Share Your Input!



Website:

<https://qrco.de/CoachellaRailStationStudy>

Contact Us:

Kendra Reif

Community Development Director

E: Kreif@coachella.org