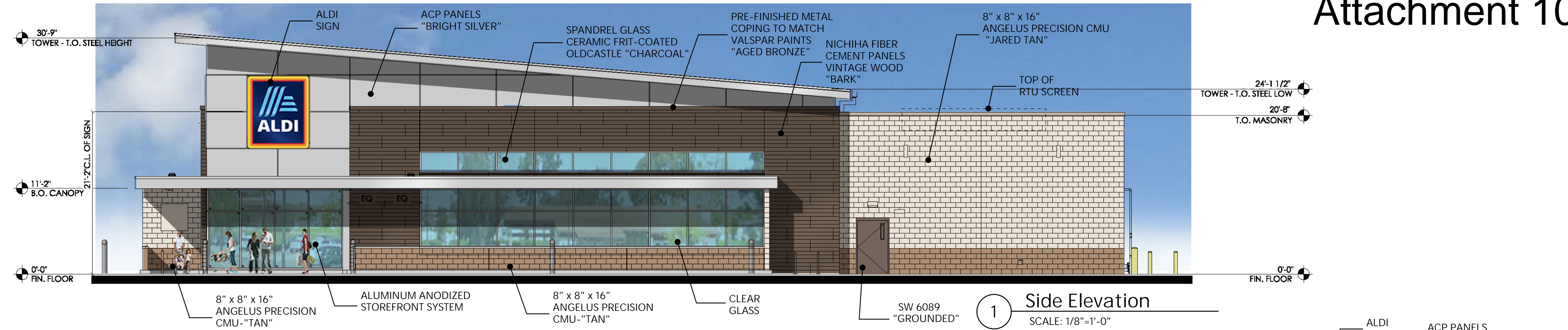
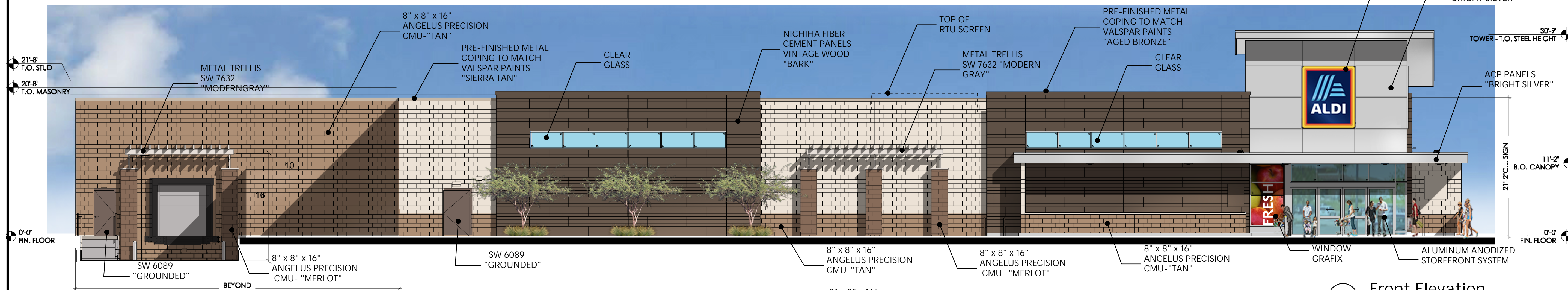


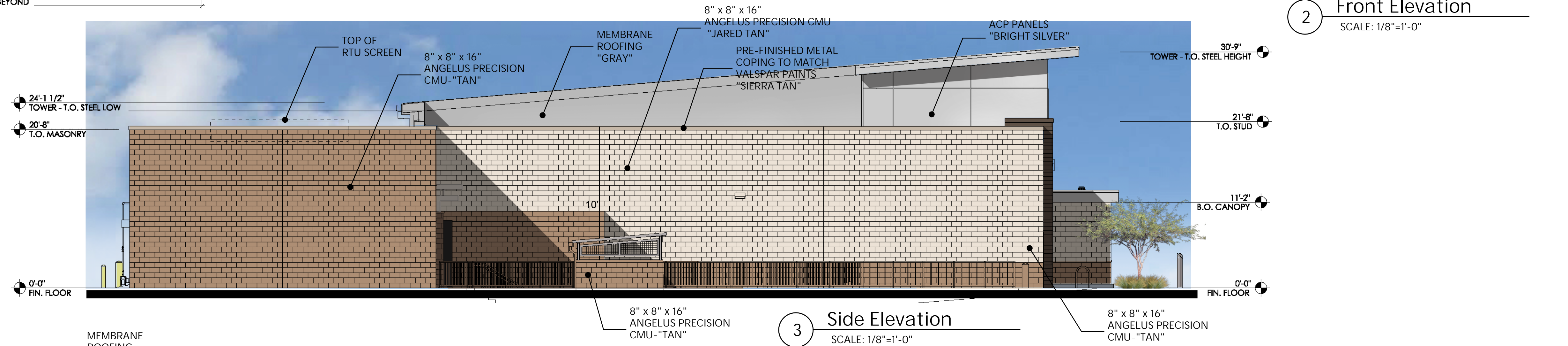
Attachment 10



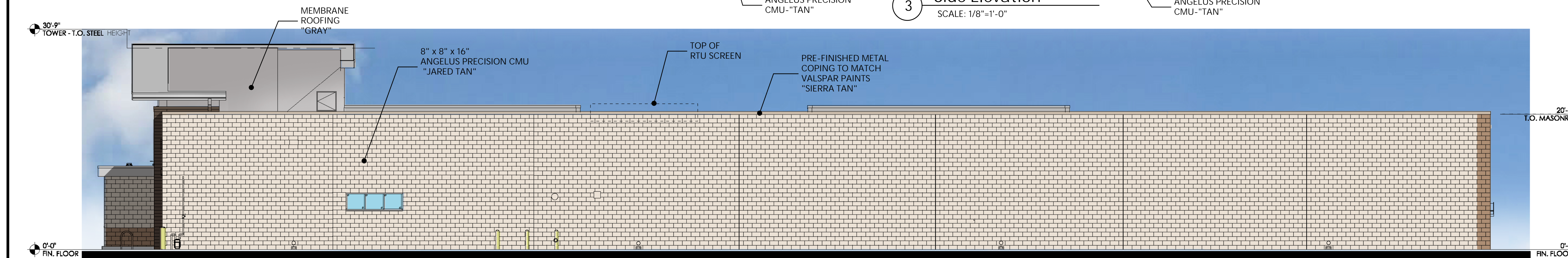
1 Side Elevation
SCALE: 1/8"=1'-0"



2 Front Elevation
SCALE: 1/8"=1'-0"



3 Side Elevation
SCALE: 1/8"=1'-0"



4 Rear Elevation
SCALE: 1/8"=1'-0"

Issued:	Date:
Revisions:	Date:

Seal	Seal
Project Architect/Engineer	Date:
Architect/Engineer Name	###/##/##
Project Lead	Date:
Lead Name	###/##/##
Project Designer	Date:
Designer Name	###/##/##

rdc.

245 East Third Street
Long Beach, Ca 90802
t 562.628.8000
rdcollaborative.com

ALDI Inc.
12661 Aldi Place
Moreno Valley, CA 92555-6703
(951) 330-9730
(951) 330-9735 fax

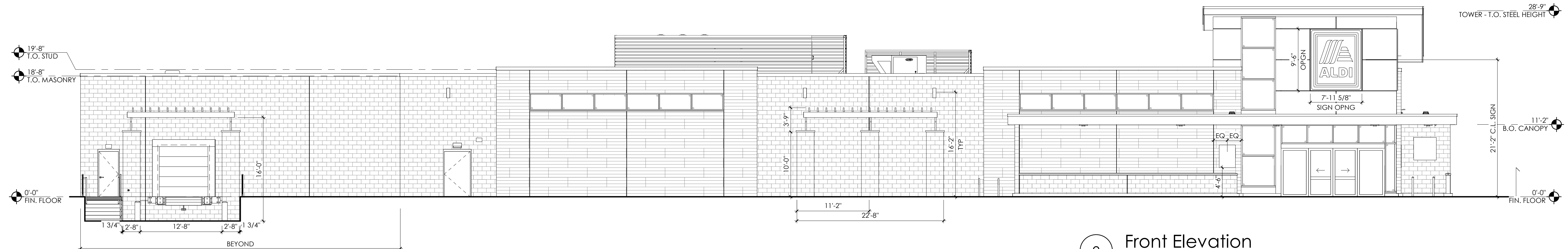
ALDI Inc. Store #: ##
Coachella
NEC Harrison St. & Fist St.
City of Coachella, CA,
Riverside County
Project Name & Location:

Conceptual Elevations	
Drawing Name:	
Date: 12.13.21	Project No.
Type: RHSDV7ER	20-197
Drawn By: RT	CEE-1
Scale: As Noted	Drawing No.

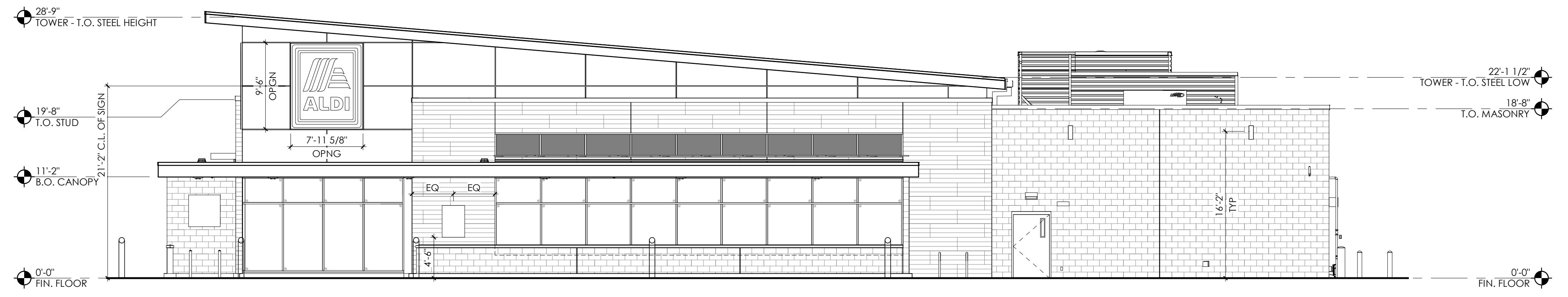
Attachment 12

KEY	MATERIAL / MFG.	COLOR / NO.	NOTES
A1	PRE-FINISHED METAL COPING	SILVER AT HIGH ROOF AND CANOPY	SEE SPECIFICATIONS APPENDIX 'B'
A1a	PRE-FINISHED METAL COPING	SIERRA TAN - AT CMU	SEE SPECIFICATIONS APPENDIX 'B'
A1b	PRE-FINISHED METAL COPING	AGED BRONZE - AT NICHIIHA TOWERS	SEE SPECIFICATIONS APPENDIX 'B'
A1c [OPT]	PRE-FINISHED METAL COPING	GRANITE AT PLASTER WALL	SEE SPEC FOR ADDITIONAL INFO
A1c [OPT]	PRE-FINISHED METAL COPING	ZINC AT STANDING SEAM METAL WALL	SEE SPEC FOR ADDITIONAL INFO
A2	8" X 8" X 16" PRECISION CMU BY ECHELON MASONRY	JARED TAN w/ HOLCIM "SANDBEIGE" MORTAR MORTAR ALT: SOLOMON "37H DEEP BROWN"	
A2a [OPT]	8" X 4" X 16" PRECISION CMU BY ECHELON MASONRY	JARED TAN w/ HOLCIM "SANDBEIGE" MORTAR MORTAR ALT: SOLOMON "37H DEEP BROWN"	
A3	PRE-FINISHED ALUM. SILL	BRIGHT SILVER	SEE SPEC FOR ADDITIONAL INFO
A3a	PRE-FINISHED METAL COPING	PETERSEN ALUMINUM - 'AGED BRONZE'	SEE SPEC FOR ADDITIONAL INFO
A4	ALUMINUM STOREFRONT - FRONT SET GLAZING	ANODIZED ALUM.	SHADED WINDOWS ARE SPANDREL, REFER TO SHEET A602
A5	MEMBRANE ROOFING	GRAY	TOP OF SLOPED ROOF, CANOPY ROOF, AND BACK OF RAISED ROOF PROJECTIONS - SEE SPECIFICATIONS APPENDIX 'B'
A6	METAL SOFFIT PANELS	SOLID PANELS - BRIGHT SILVER	RE: DWG. A301-A304
A6a	METAL SOFFIT PANELS	1/2" VENTED PANELS - BRIGHT SILVER	RE: DWG. A301-A304
A7	EXTERIOR PAINT	PT-19 / CL-9	RE: DWG. A603
A8	ALUMINUM STOREFRONT SYSTEM	ANODIZED ALUM.	SEE A-603 AND SPECS FOR GLASS TYPE
A9	ALUMINUM COMPOSITE PANEL	BRIGHT SILVER	PROVIDE PANEL JOINTS AS SHOWN - PROVIDE ONE PIECE TIGHT FIT EXTRUDED MOLDING INSTALLATION SYSTEM WITH CENTER REVEAL TRIM BETWEEN PANELS AND J TRIM AT PANEL EDGES.
A10	NICHIIHA FIBER CEMENT CLADDING	VINTAGE WOOD "BARK"	CONTACT NICHIIHA AT 770-805-9466 FOR ORDERING. SEE SPEC FOR TRIM REQUIREMENTS AND ADDITIONAL INFO. ALL INCLUDED TRIM (1", 1", 1" CORNER, ETC) TO MATCH FCF. NICHIIHA PANELS SHALL EXTEND ONTO THE ROOF FOR THE FULL DEPTH OF THE BUMPOUT. SEE SHEET A-121 ROOF PLAN FOR REFERENCE.
A11	BLRD-2	PT-19 / CL-4	RE: DWG. A603
A12	BLRD-4	CG-8104 BK CHROMA HSE PE	RE: DWG. A603
A13	GUARD RAIL TYPE "A"	GALVANIZED STEEL	RE: DWG. B2/A507
A14	GUARD RAIL TYPE "B"	GALVANIZED STEEL	RE: DWG. B2/A507
A15	CART STARTER POST	GALVANIZED	
A16	DOCK LEVELER / SEAL AND BUMPERS	LEVELER - FACTORY FINISH / SEAL AND BUMPERS - FACTORY FINISH - BLACK	
A17	MASONRY CONTROL JOINT		MAX 30" OC RE: DWG. A201
A18	OVERFLOW SCUPPER	FACTORY FINISH	COLOR TO MATCH ROOF COPING
A19	ARCHITECTURAL CAST STONE CAP	CDI G040 "OLD PEWTER"	SEE SPEC FOR ADDITIONAL INFORMATION
A20	ALDI TOWER SIGN	BY SIGN VENDOR	7'-11 5/8" W. x 9'-5 1/2" H.; VERIFY SIGN SIZE PRIOR TO FRAMING OPENING SEE DETAIL C1/A504
A21	CRTB	NATURAL	RE: DWG. A603 - SEE STRUCTURAL DWGS
A22	KNOX BOX	FACTORY FINISH	CONFIRM TYPE AND LOCATION WITH LOCAL FIRE MARSHAL
A23	AUTO DOOR SYSTEM & TRANSOM	ANODIZED ALUMINUM	RE: DWG. A601 & A602
A25	8" X 8" PRE-FINISHED ALUM GUTTER	MATCH PREFINISHED METAL COPING	
A26	8" X 8" PRE-FINISHED ALUM DOWNSPOUT	MATCH PREFINISHED METAL COPING	TERMINATE AT CONC. SPLASH BLOCK
A27	ACP H/J TRIM / JOINT COVER		TYPICAL AT EDGES AND BUTT JOINTS OF ACP
A28	NICHIIHA FIBER CEMENT PANEL BASE FLASHING	PETERSEN ALUMINUM - 'AGED BRONZE'	
A29 [OPT]	BERRIDGE MANUFACTURING CEE-LOCK PANEL	LEAD-COTE	SEE SPEC FOR ADDITIONAL INFO
A29 [OPT]	CEMENT PLASTER	SW7632 MODERN GRAY	SEE SPEC FOR ADDITIONAL INFO
A30	DUMPSTER ENCLOSURE		RE: DWG. A508
A31	ROOF TOP SCREENING	RE: DWG. A121	RE: DETAIL A3/A504
A32	PRE-FINISHED EXTERIOR LOUVER VENT	MATCH PREFINISHED ACCESS DOOR FINISH	PROVIDE INSECT SCREEN. RE: DETAIL B3/A503
A33	QUARTER CART SIGN		
A34	CONCRETE SPLASHBLOCK		ROOF DRAIN TO DAYLITE AT FACE OF WALL AT +18" AFS

KEY	MATERIAL / MFG.	COLOR / NO.	NOTES
E1	EXIT DISCHARGE	FACTORY FINISH	MOUNT @ 8'-0" A.F.F.
E2	WALL SCONCE	FACTORY FINISH	MOUNT @ 16'-2" A.F.F.; RE: DWG. A111 FOR DIMENSIONS
E3	FUSED DISCONNECT	FACTORY FINISH	SEE ELECTRICAL DWGS
E4	UTILITY METERING & C.T.	FACTORY FINISH	SEE ELECTRICAL DWGS
E5	EXTERIOR WALL PACK	FACTORY FINISH	MAN DOORS - MOUNT @ 9'-0" A.F.F.; LOADING DOCK - MOUNT @ 12'-0" A.F.F.
E6	EXTERIOR DUPLEX RECEPTACLE	FACTORY FINISH	MOUNT @ 1'-4" A.F.F. IN 4" SQUARE J-BOX
E7	GENERATOR QUICK CONNECT	FACTORY FINISH	SEE ELECTRICAL DWGS
E8	AIR SAMPLING CONTROL DETECTION PANEL	FACTORY FINISH	SEE ELECTRICAL DWGS
F1	FIRE DEPARTMENT CONNECTION	FACTORY FINISH	SEE FIRE PROTECTION DWGS
F2	MOTOR GONG	FACTORY FINISH	SEE FIRE PROTECTION DWGS
P1	HOSE BIB	FACTORY FINISH	SEE PLUMBING DWGS AND FLOOR PLAN
P2	RPZ DISCHARGE	FACTORY FINISH	SEE PLUMBING DWGS
P3	GAS METER	FACTORY FINISH	SEE PLUMBING DWGS
XX	GLAZING KEY		RE: DWG. A602
YY	ALIGN KEY		A: ALIGN NICHIIHA PANEL JOINTS AND WINDOW MULLIONS B: ALIGN ALUMINUM COMPOSITE PANEL JOINTS AND WINDOW MULLIONS C: ALIGN NICHIIHA PANEL JOINTS, ALUMINUM COMPOSITE PANEL JOINTS & WINDOW MULLIONS



2 Front Elevation
SCALE: 1/8" = 1'-0"



1 Side Elevation
SCALE: 1/8" = 1'-0"

Issued:	Date:
Planning Submittal	09/29/21
Revisions:	Date:

Seal	Seal
Project Architect/Engineer	Date:
Architect/Engineer Name	###/##/##
Project Lead	Date:
Lead Name	###/##/##
Project Designer	Date:
Designer Name	###/##/##



rdc.

245 East Third Street
Long Beach, Ca 90802
t 562.628.8000
rdcollaborative.com

ALDI Inc.
12661 Aldi Place
Moreno Valley, CA 92555-6703
(951) 330-5750
(951) 330-5753 fax

ALDI Inc. Store #: ##
Coachella
NEC Harrison St. & First St.
City of Coachella, CA,
Riverside County
Project Name & Location:

Conceptual Exterior Elevations
Drawing Name:

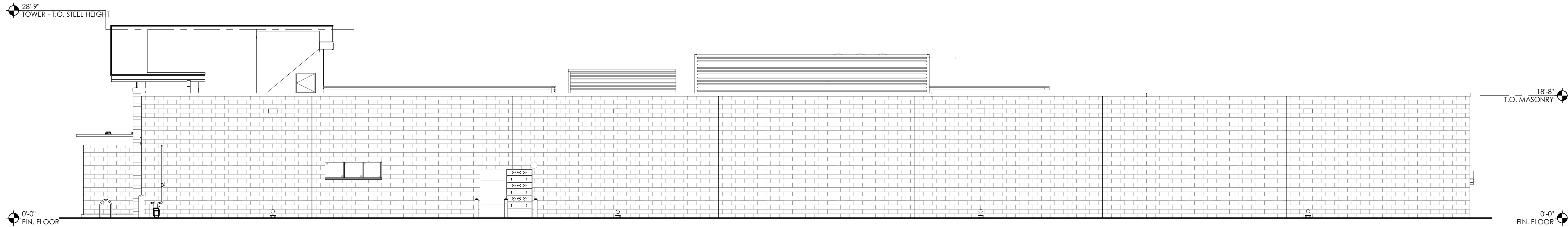
Date:	Project No.
Type: RHSDV7ER	20-197
Drawn By: SF	A-201
Scale: As Noted	Drawing No.

Attachment 12

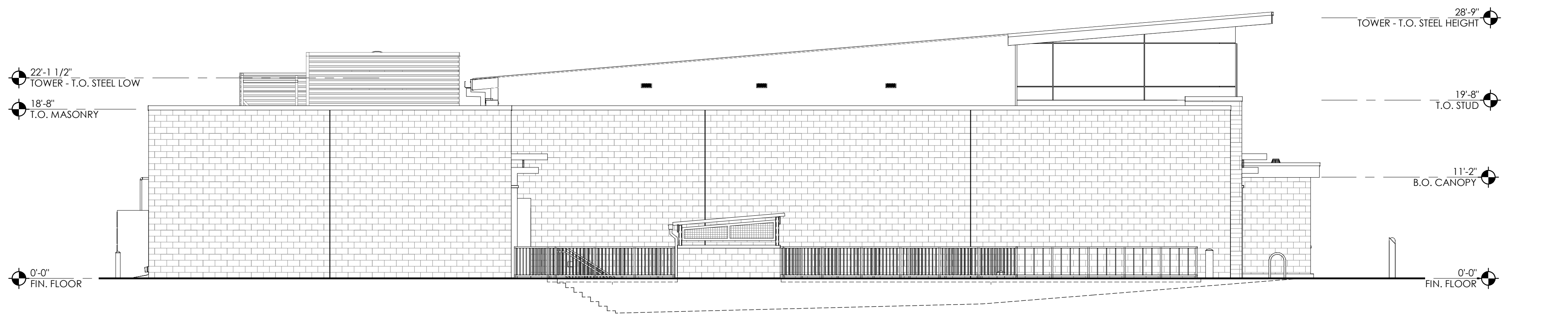
KEY	MATERIAL / MFG.	COLOR / NO.	NOTES
A1	PRE-FINISHED METAL COPING	SILVER AT HIGH ROOF AND CANOPY	SEE SPECIFICATIONS APPENDIX 'B'
A1a	PRE-FINISHED METAL COPING	SIERRA TAN - AT CMU	SEE SPECIFICATIONS APPENDIX 'B'
A1b	PRE-FINISHED METAL COPING	AGED BRONZE - AT NICHIIHA TOWERS	SEE SPECIFICATIONS APPENDIX 'B'
A1c [OPT]	PRE-FINISHED METAL COPING	GRANITE AT PLASTER WALL	SEE SPEC FOR ADDITIONAL INFO
A1c [OPT]	PRE-FINISHED METAL COPING	ZINC AT STANDING SEAM METAL WALL	SEE SPEC FOR ADDITIONAL INFO
A2	8" X 8" X 16" PRECISION CMU BY ECHELON MASONRY	JARED TAN w/ HOLCIM "SANDBEIGE" MORTAR MORTAR ALT: SOLOMON "37H DEEP BROWN"	
A2a [OPT]	8" X 4" X 16" PRECISION CMU BY ECHELON MASONRY	JARED TAN w/ HOLCIM "SANDBEIGE" MORTAR MORTAR ALT: SOLOMON "37H DEEP BROWN"	
A3	PRE-FINISHED ALUM. SILL	BRIGHT SILVER	SEE SPEC FOR ADDITIONAL INFO
A3a	PRE-FINISHED METAL COPING	PETERSEN ALUMINUM - 'AGED BRONZE'	SEE SPEC FOR ADDITIONAL INFO
A4	ALUMINUM STOREFRONT - FRONT SET GLAZING	ANODIZED ALUM.	SHADED WINDOWS ARE SPANDREL, REFER TO SHEET A602
A5	MEMBRANE ROOFING	GRAY	TOP OF SLOPED ROOF, CANOPY ROOF, AND BACK OF RAISED ROOF PROJECTIONS - SEE SPECIFICATIONS APPENDIX 'B'
A6	METAL SOFFIT PANELS	SOLID PANELS - BRIGHT SILVER	RE: DWG. A301-A304
A6a	METAL SOFFIT PANELS	1/2" VENTED PANELS - BRIGHT SILVER	RE: DWG. A301-A304
A7	EXTERIOR PAINT	PT-19 / CL-9	RE: DWG. A603
A8	ALUMINUM STOREFRONT SYSTEM	ANODIZED ALUM.	SEE A-603 AND SPECS FOR GLASS TYPE
A9	ALUMINUM COMPOSITE PANEL	BRIGHT SILVER	PROVIDE PANEL JOINTS AS SHOWN - PROVIDE ONE PIECE TIGHT FIT EXTRUDED MOLDING INSTALLATION SYSTEM WITH CENTER REVEAL TRIM BETWEEN PANELS AND J TRIM AT PANEL EDGES.
A10	NICHIIHA FIBER CEMENT CLADDING	VINTAGE WOOD "BARK"	CONTACT NICHIIHA AT 770-805-9466 FOR ORDERING. SEE SPEC FOR TRIM REQUIREMENTS AND ADDITIONAL INFO. ALL INCLUDED TRIM (1", 1", 1" CORNER, ETC) TO MATCH FCF. NICHIIHA PANELS SHALL EXTEND ONTO THE ROOF FOR THE FULL DEPTH OF THE BUMPOUT. SEE SHEET A-121 ROOF PLAN FOR REFERENCE.
A11	BLRD-2	PT-19 / CL-4	RE: DWG. A603
A12	BLRD-4	CG-8104 BK CHROMA HSE PE	RE: DWG. A603
A13	GUARD RAIL TYPE "A"	GALVANIZED STEEL	RE: DWG. B2/A507
A14	GUARD RAIL TYPE "B"	GALVANIZED STEEL	RE: DWG. B2/A507
A15	CART STARTER POST	GALVANIZED	
A16	DOCK LEVELER / SEAL AND BUMPERS	LEVELER - FACTORY FINISH / SEAL AND BUMPERS - FACTORY FINISH - BLACK	
A17	MASONRY CONTROL JOINT		MAX 30" OC RE: DWG. A201
A18	OVERFLOW SCUPPER	FACTORY FINISH	COLOR TO MATCH ROOF COPING
A19	ARCHITECTURAL CAST STONE CAP	CDI G040 "OLD PEWTER"	SEE SPEC FOR ADDITIONAL INFORMATION
A20	ALDI TOWER SIGN	BY SIGN VENDOR	7'-11 1/8" W. x 9'-5 1/2" H.; VERIFY SIGN SIZE PRIOR TO FRAMING OPENING SEE DETAIL C1/A504
A21	CRTB	NATURAL	RE: DWG. A603 - SEE STRUCTURAL DWGS
A22	KNOX BOX	FACTORY FINISH	CONFIRM TYPE AND LOCATION WITH LOCAL FIRE MARSHAL
A23	AUTO DOOR SYSTEM & TRANSOM	ANODIZED ALUMINUM	RE: DWG. A601 & A602
A25	8" X 8" PRE-FINISHED ALUM GUTTER	MATCH PREFINISHED METAL COPING	
A26	8" X 8" PRE-FINISHED ALUM DOWNSPOUT	MATCH PREFINISHED METAL COPING	TERMINATE AT CONC. SPLASH BLOCK
A27	ACP H/J TRIM / JOINT COVER		TYPICAL AT EDGES AND BUTT JOINTS OF ACP
A28	NICHIIHA FIBER CEMENT PANEL BASE FLASHING	PETERSEN ALUMINUM - 'AGED BRONZE'	
A29 [OPT]	BERRIDGE MANUFACTURING CEE-LOCK PANEL	LEAD-COTE	SEE SPEC FOR ADDITIONAL INFO
A29 [OPT]	CEMENT PLASTER	SW7632 MODERN GRAY	SEE SPEC FOR ADDITIONAL INFO
A30	DUMPSTER ENCLOSURE		RE: DWG. A508
A31	ROOF TOP SCREENING	RE: DWG. A121	RE: DETAIL A3/A504
A32	PRE-FINISHED EXTERIOR LOUVER VENT	MATCH PREFINISHED ACCESS DOOR FINISH	PROVIDE INSECT SCREEN. RE: DETAIL B3/A503
A33	QUARTER CART SIGN		
A34	CONCRETE SPLASHBLOCK		ROOF DRAIN TO DAYLITE AT FACE OF WALL AT +18"AFS

KEY	MATERIAL / MFG.	COLOR / NO.	NOTES
E1	EXIT DISCHARGE	FACTORY FINISH	MOUNT @ 8'-0" A.F.F.
E2	WALL SCONCE	FACTORY FINISH	MOUNT @ 16'-2" A.F.F.; RE: DWG. A111 FOR DIMENSIONS
E3	FUSED DISCONNECT	FACTORY FINISH	SEE ELECTRICAL DWGS
E4	UTILITY METERING & C.T.	FACTORY FINISH	SEE ELECTRICAL DWGS
E5	EXTERIOR WALL PACK	FACTORY FINISH	MAN DOORS - MOUNT @ 9'-0" A.F.F.; LOADING DOCK - MOUNT @ 12'-0" A.F.F.
E6	EXTERIOR DUPLEX RECEPTACLE	FACTORY FINISH	MOUNT @ 1'-4" A.F.F. IN 4" SQUARE J-BOX
E7	GENERATOR QUICK CONNECT	FACTORY FINISH	SEE ELECTRICAL DWGS
E8	AIR SAMPLING CONTROL DETECTION PANEL	FACTORY FINISH	SEE ELECTRICAL DWGS
F1	FIRE DETECTION CONNECTION	FACTORY FINISH	SEE FIRE PROTECTION DWGS
F2	MOTOR GONG	FACTORY FINISH	SEE FIRE PROTECTION DWGS
P1	HOSE BIB	FACTORY FINISH	SEE PLUMBING DWGS AND FLOOR PLAN
P2	RPZ DISCHARGE	FACTORY FINISH	SEE PLUMBING DWGS
P3	GAS METER	FACTORY FINISH	SEE PLUMBING DWGS
XX	GLAZING KEY		RE: DWG. A602
YY	ALIGN KEY		A: ALIGN NICHIIHA PANEL JOINTS AND WINDOW MULLIONS B: ALIGN ALUMINUM COMPOSITE PANEL JOINTS AND WINDOW MULLIONS C: ALIGN NICHIIHA PANEL JOINTS, ALUMINUM COMPOSITE PANEL JOINTS & WINDOW MULLIONS

Issued:	Date:
Planning Submittal	09/29/21
Revisions:	Date:



4 Rear Elevation
SCALE: 1/8" = 1'-0"

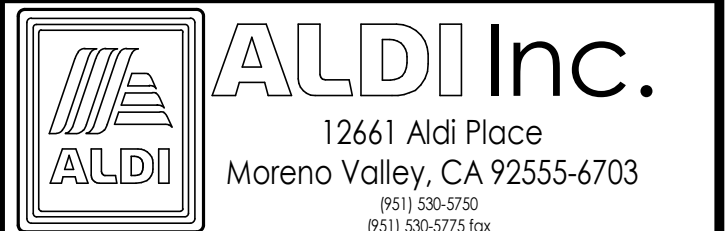


3 Side Elevation
SCALE: 1/8" = 1'-0"

Seal	Seal
Project Architect/Engineer	Date:
Architect/Engineer Name	###/##/##
Project Lead	Date:
Lead Name	###/##/##
Project Designer	Date:
Designer Name	###/##/##



245 East Third Street
Long Beach, Ca 90802
t 562.628.8000
rdcollaborative.com



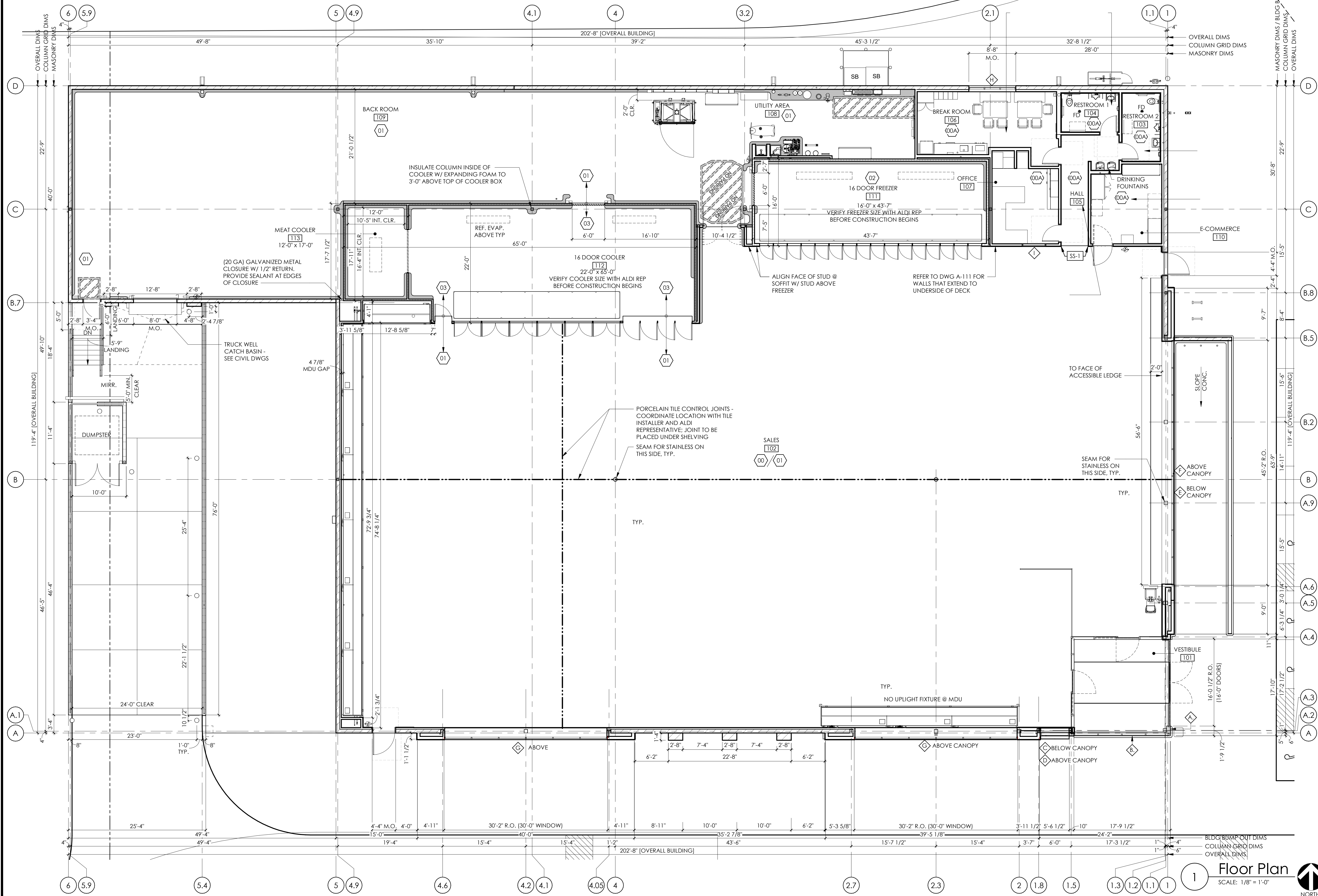
ALDI Inc. Store #: ##
Coachella
NEC Harrison St. & First St.
City of Coachella, CA,
Riverside County
Project Name & Location:

Conceptual Exterior Elevations
Drawing Name:

Date: 08/14/20	Project No.
Type: RHSDV7ER	20-197
Drawn By:	A-202
Scale: As Noted	Drawing No.

NOTES:
1. SEE SHEET A-603 FOR COLOR AND FINISH MATERIAL SCHEDULES.
2. SEE SHEET A-603 FOR INTERIOR METAL STUD INFORMATION.
3. ALL PARTITION DIMENSIONS ARE TO FACE OF STUD UNLESS NOTED OTHERWISE (I.E. CLEAR).
4. PROVIDE BLOCKING AS NEEDED FOR ALL WALL MOUNTED ITEMS.
5. FLAT STEEL IS REQUIRED AT MECHANICAL FIXTURES COORDINATE LOCATION WITH ALDI REPRESENTATIVE.
6. REFER TO SHEET A-602 FOR WINDOW / GLAZING DETAILS.

KEY	FLOOR FINISH SCHEDULE	DESCRIPTION
00	2 5/8" THICK SET TILE SYSTEM - FURNISHED AND INSTALLED BY OWNER	
00A	3/4" THIN SET TILE - FURNISHED BY OWNER AND INSTALLED BY OWNER	
01	CONCRETE SLAB - SMOOTH FINISH	
02	CONCRETE SLAB (FREEZER) - SEALED MEDIUM BROOM FINISH	
03	CONCRETE SLAB (COOLER) - SEALED SMOOTH FINISH	



Issued:	Date:
Planning Submittal	09/29/21

Revisions:	Date:

THESE DRAWINGS ARE PROTOTYPICAL AND SHALL NOT BE USED FOR ANY CONSTRUCTION OR RENOVATION ACTIVITIES. They are only for use by ALDI and their designated design professionals on ALDI projects. When applying the required professional standard of care and permitted by law, the design professional may integrate these drawings into his/her own technical submission. The design professional is responsible for preparing a submission in accordance with all applicable laws, building codes and local site conditions. Deviations from this prototypical design are to be coordinated with the ALDI Director of Real Estate.

Project Architect/Engineer	Date:
Architect/Engineer Name	###/###/###
Project Lead	Date:
Lead Name	###/###/###
Project Designer	Date:
Designer Name	/

Copyright © 2020
RDC, S111, Inc.
Drawing Alteration
It is a violation of law for any person, unless acting under the direction of a licensed Architect, Professional Engineer, Landscape Architect, or Land Surveyor to alter any item on this document in any way. Any licensee who alters this document is required by law to affix his or her seal and to add the notation "Altered By" followed by his or her signature and the specific description of the alteration or revision.
DO NOT SCALE PLANS
Copying, Printing, Software and other processes required to produce these prints can stretch or shrink the actual paper or layout. Therefore, scaling of this drawing may be inaccurate. Contact Retail Design Collaborative with any need for additional dimensions or clarifications.

245 East Third Street
Long Beach, Ca 90802
t 562.628.8000
rdcollaborative.com

ALDI Inc. 12661 Aldi Place
Moreno Valley, CA 92555-6703
(951) 338-3730
(951) 338-5753 fax

ALDI Inc. Store #: ##
Coachella
NEC Harrison St. & First St.
City of Coachella, CA,
Riverside County
Project Name & Location:

Floor Plan
Drawing Name:
Date:
Type: RHSDV7ER
Drawn By: SF
Scale: As Noted
Project No.
20-197
A-101
Drawing No.

1 Floor Plan
SCALE: 1/8" = 1'-0"
NORTH



NICHIHA FIBER CEMENT PANELS
"BARK"
VINTAGE WOOD COLLECTION



SPANDREL GLASS
GLASS COATINGS & CONCEPTS, LLC
SX3527E808 "CHARCOAL"



CONCRETE MASONRY UNITS
TO MATCH ANGELUS BLOCK
QUIKBRICK "JARED TAN"



EXTERIOR DOORS AND FRAMES TO MATCH
SHERWIN WILLIAMS PAINTS
SW 6089 "GROUNDED"



ALUMINUM STOREFRONT
TO MATCH ARCADIA AC-2
"CLEAR ANODIZED ALUMINUM"

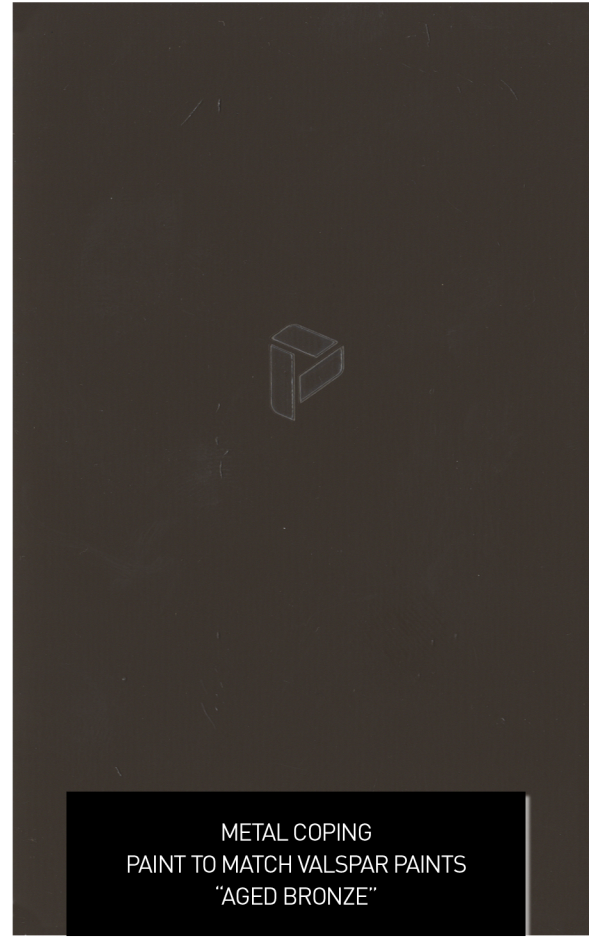
SOLARBAN® 70XL (2) Clear + Clear Glass Insulating Glass Unit S-11 12/16

VLT	Exterior Reflectance	Interior Reflectance	U-Value Imperial (Winter)		SHGC	LSG
			Air	Argon		
64%	12%	13%	0.28	0.24	0.27	2.37

STOREFRONT GLASS TO MATCH
PPG / VITRO SOLARBAN
70XL INSULATED GLAZING UNIT



ALUMINUM COMPOSITE PANELS
"BRIGHT SILVER"



METAL COPING
PAINT TO MATCH VALSPAR PAINTS
"AGED BRONZE"



METAL COPING
PAINT TO MATCH VALSPAR PAINTS
"SIERRA TAN"

MEMBRANE ROOFING
SIKA ROOFING
"STANDARD GRAY"

ALDI MARKET
CA Prototype