



REQUEST FOR QUALIFICATIONS FOR
PUBLIC-PRIVATE PARTNERSHIP DEVELOPMENT
TEAM FOR IMPLEMENTATION OF ENERGY DELIVERY
SYSTEM FOR MUNICIPAL ELECTRIC UTILITY

**CITY OF COACHELLA
REQUEST FOR QUALIFICATIONS
FOR PUBLIC-PRIVATE PARTNERSHIP
DEVELOPMENT TEAM FOR IMPLEMENTATION OF
ENERGY DELIVERY SYSTEM FOR MUNICIPAL
ELECTRIC UTILITY**

ADDENDUM NO. 2

On October 22, 2024, the City of Coachella ("City") issued a Request for Qualifications for a Public-Private Partnership Development Team for Implementation of Energy Delivery System for Municipal Electric Utility ("RFQ"). On November 12, 2024, the City issued Addendum No. 1 to the RFQ and caused the same to be posted to its website (collectively, the RFQ and all addenda, inclusive of this Addendum No. 2, may be referred to as the "P3 RFQ"). The City hereby revises the P3 RFQ as set forth in this Addendum No. 2. All other terms of the P3 RFQ, except those explicitly identified below, remain in full effect.

1. Instructions on Electronic Submissions.

For purposes of compliance with the electronic submission requirements contained in Paragraph 10 of the RFQ, please send an email to Richard Martinez at Richard.Martinez@bbklaw.com and Timothy Lyons at Timothy.Lyons@bbklaw.com with (1) your name, (2) the firm you represent, and (3) a request for access to the Best Best & Krieger LLP ("BBK") Collaborate site for the "City of Coachella Electric Utility RFQ" ("Collaborate site"). You will thereafter receive an email invitation to activate your account and join the Collaborate site. Once active, you must access the Collaborate Site and upload your documents by using the "Upload" feature.

2. Attachment A: Development Area

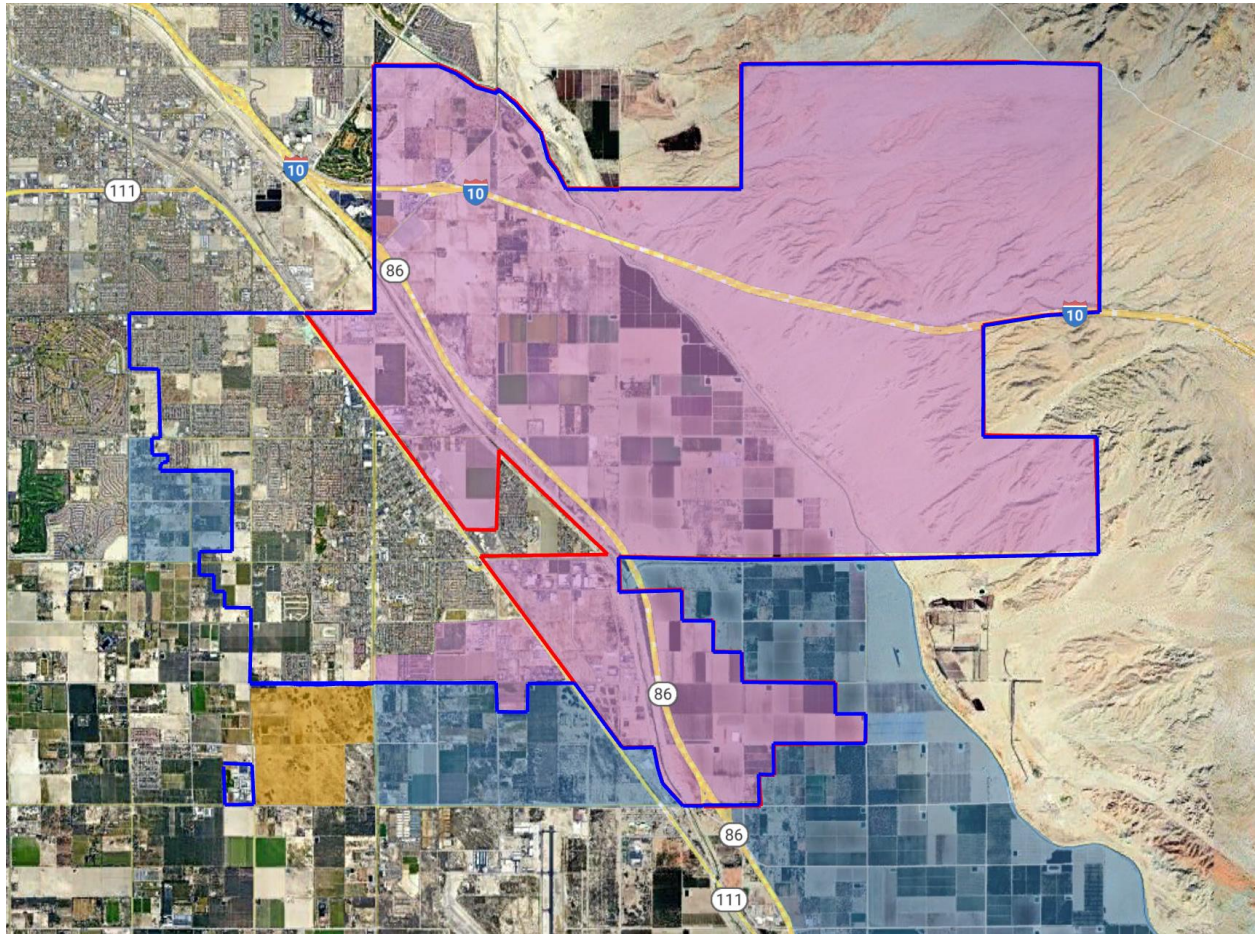
"Attachment A: Development Area" is hereby deleted in its entirety and replaced with the following new "Attachment A: Development Area".

(Addendum No. 2 continues on the following page)



REQUEST FOR QUALIFICATIONS FOR PUBLIC-PRIVATE PARTNERSHIP DEVELOPMENT TEAM FOR IMPLEMENTATION OF ENERGY DELIVERY SYSTEM FOR MUNICIPAL ELECTRIC UTILITY

ATTACHMENT A – DEVELOPMENT AREA



LEGEND

City Limits —————

Development Area

Augustine Reservation

Sphere of Influence

