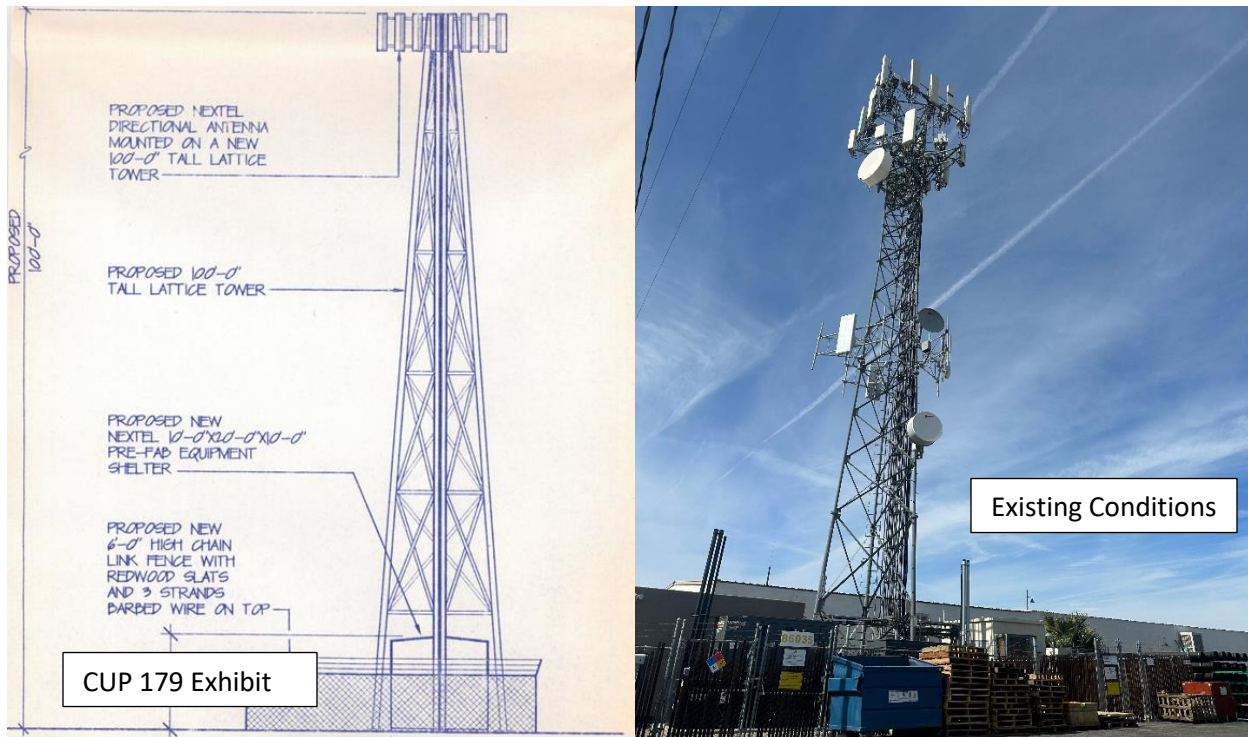


## Site 1



**Planning Case no:** CUP 179

**Approval date:** October 13, 1999

**Location:** 86-045 Avenue 52

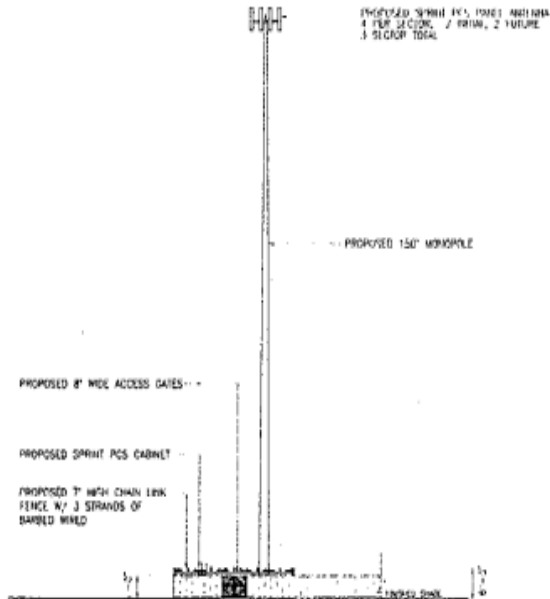
**Type:** Tower

**Facility Height:** 100'

**Status:** Consistent with Conditions of Approval for CUP. Building permits were approved to install new microwave dishes to existing tower. Needs general maintenance. **In Compliance**

**Last Known Provider:** Nextel Communications

## Site 2



CUP 182 Exhibit



Existing Conditions

**Planning Case no:** CUP 182

**Approval date:** January 12, 2000

**Location:** 86-275 Avenue 50

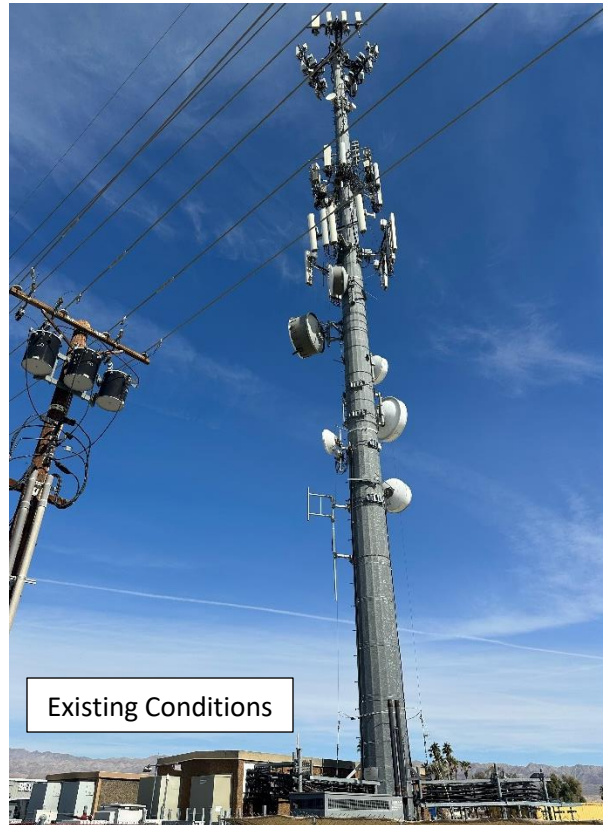
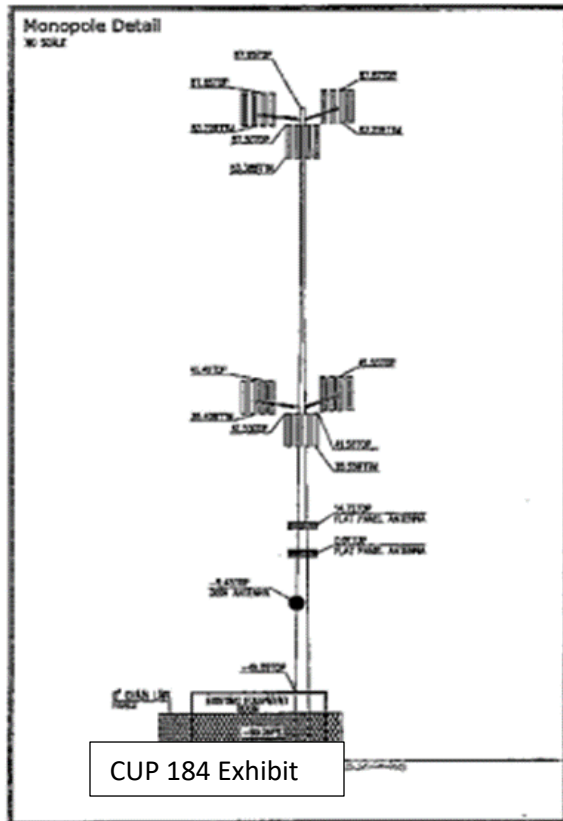
**Type:** Tower

**Facility Height:** 150'

**Status:** Construction is in conformance with the plans submitted and conditions imposed. The site is designed to co-locate multiple additional communication carriers on the tower in the future. **In Compliance**

**Last Known Provider:** Sprint

## Site 3



**Planning Case no:** CUP 184

**Approval date:** September 06, 2000

**Location:** 49-600 Oates Lane

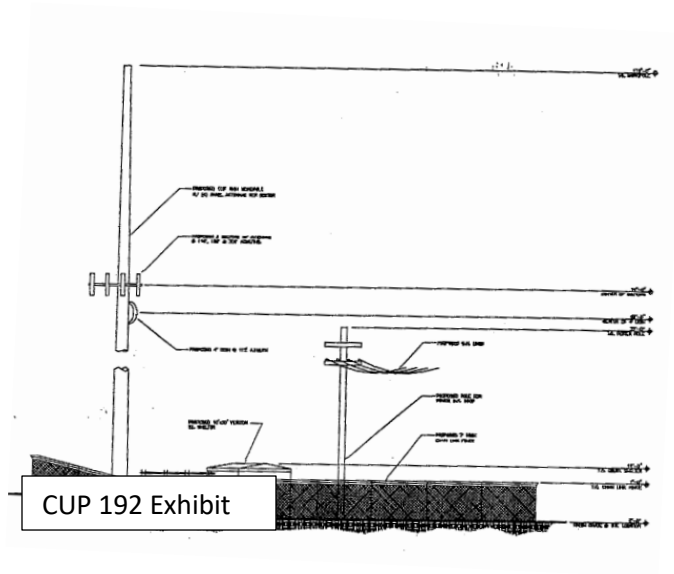
**Type:** Tower

**Facility Height:** 150'

**Status:** An amendment to CUP 184 was approved on November 02, 2005 to include additional equipment to the wireless telecommunication facility. Debris, mounds of dirt blocking the driveway, and need for general maintenance was observed. Condition 15 of amendment to CUP 184 requires landscaping to be planted and maintained around the perimeter of the lease. No landscaping was observed. **Not in Compliance**

**Last Known Provider: AT&T Wireless Services**

## Site 4



Existing Conditions

**Planning Case no:** CUP 192

**Approval date:** July 17, 2002

**Location:** 45-800 Dillon Road

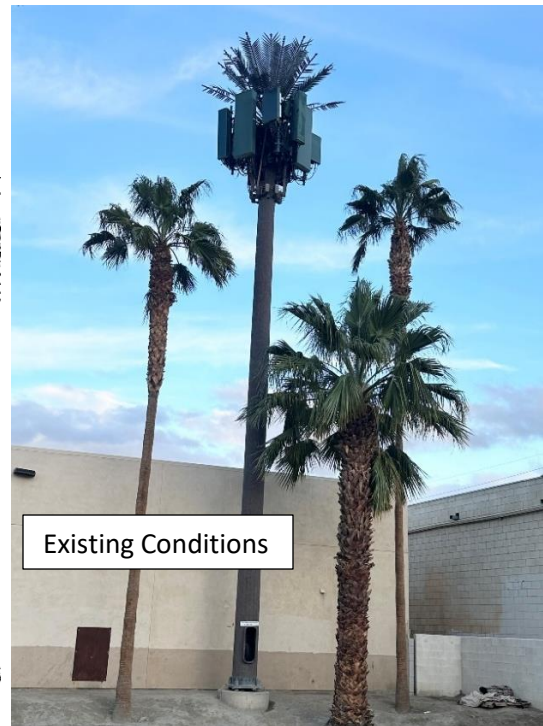
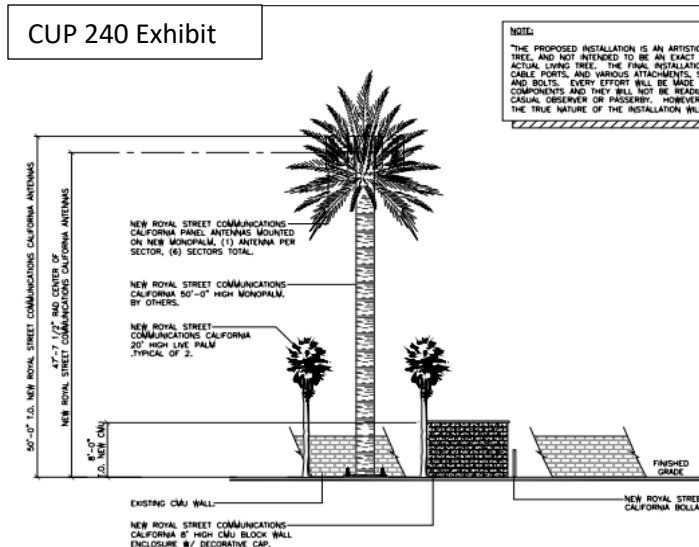
**Type:** Tower

**Facility Height:** 110'

**Status:** A permit request for the replacement of 12 antennas was conditionally granted on January 20, 2016. Condition 12 requires the installment of appropriate view obscuring landscaping in conjunction with the chain link fence to establish a "living fence." No visible living fence. Landscaping and general maintenance needed. **Not in Compliance**

**Last Known Provider:** SpectraSite Communications

## Site 5



**Planning Case no:** CUP 240

**Approval date:** February 03, 2010

**Location:** 51-335 Harrison Street (Plaza Tonalá)

**Type:** Monopalm

**Facility Height:** 50'

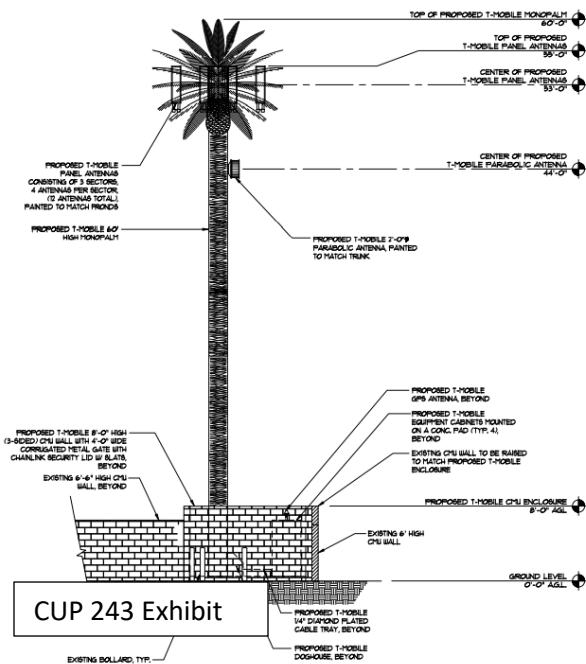
**Status:** Two Washingtonia Robusta palm trees were required to be planted adjacent to the monopole wireless tower. Live palm trees were observed. Synthetic palm materials have not been maintained. Needs general maintenance.

**Not in Compliance**

**Last Known Provider:** Royal Street Communications



## Site 6



**Planning Case no:** CUP 243

**Approval date:** June 02, 2010

**Location:** 49-251 Harrison Street

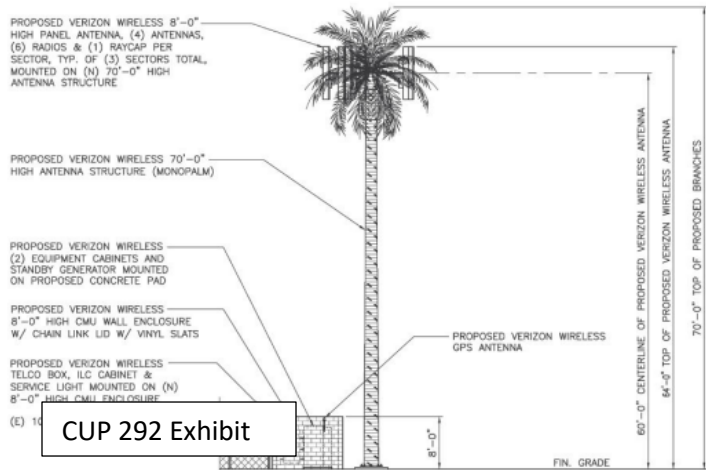
**Type:** Monopalm

**Facility Height:** 60'

**Status:** Two Washingtonia Robusta palm trees with minimum height of 15' were required to be planted adjacent to the monopalm wireless tower. No palm trees were observed. Live palm trees need to be replaced. **Not in Compliance**

**Last Known Provider:** T-Mobile

## Site 7



**Planning Case no:** CUP 292

**Approval date:** January 31, 2018

**Location:** 51-711 Douma Street

**Type:** Monopalm

**Facility Height:** 70'

**Status:** Two date palm trees of a minimum 20' to 30' were required to be planted near monopalm wireless tower. No date palm trees were observed. Contact information for owner is posted at site location. Site is well maintained. **Not in Compliance**

**Last Known Provider:** Verizon Wireless

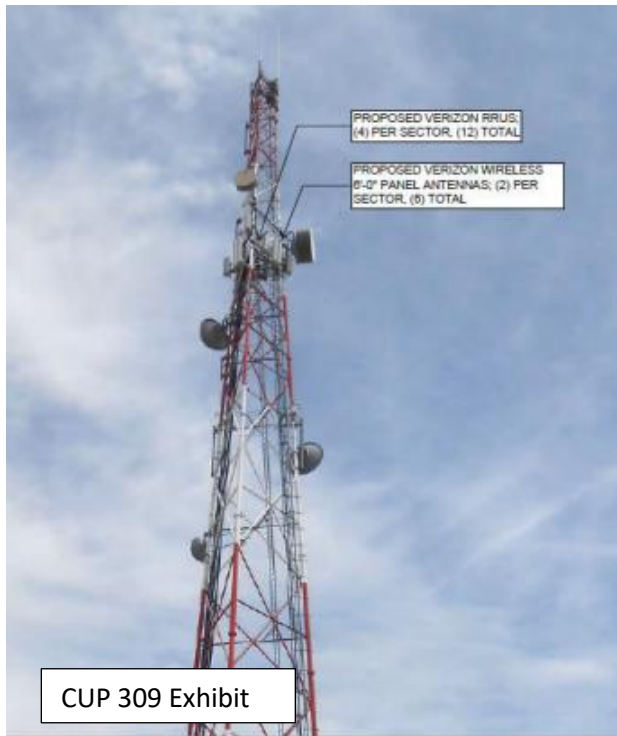








## Site 11



**Planning Case no:** CUP 309

**Approval date:** January 30, 2019

**Location:** 86-351 Avenue 52

**Type:** Tower

**Facility Height:** 200'

**Status:** Property was once owned by IID, and was purchased by the City in 2009. In 2019, a Conditional Use Permit for the collocation of six antennas and other ancillary communication equipment to the existing communication lattice tower were approved. Facility is well maintained. **In Compliance**

**Last Known Provider:** Verizon Wireless