

ANNEXATION MAP NO. 32
 PARCEL MAP NO. 37833
 COMMUNITY FACILITIES DISTRICT NO. 2005-1
 (LAW ENFORCEMENT, FIRE AND PARAMEDIC SERVICES)

CITY OF COACHELLA
 COUNTY OF RIVERSIDE
 STATE OF CALIFORNIA

FILED IN THE OFFICE OF THE CITY CLERK THIS _____ DAY OF _____, 20__.

I HEREBY CERTIFY THAT THE WITHIN MAP SHOWING THE PROPOSED BOUNDARY OF ANNEXATION MAP NO. 32, PARCEL MAP NO. 37833, TO COMMUNITY FACILITIES DISTRICT NO. 2005-1, (LAW ENFORCEMENT, FIRE AND PARAMEDIC SERVICES). CITY OF COACHELLA, COUNTY OF RIVERSIDE, STATE OF CALIFORNIA, WAS APPROVED BY THE CITY COUNCIL OF THE CITY OF COACHELLA AT A REGULAR MEETING THEREOF, HELD ON THE _____ DAY OF _____, 20__, BY ITS RESOLUTION NO. _____.

ISABEL CASTILLON
 CITY CLERK
 CITY OF COACHELLA

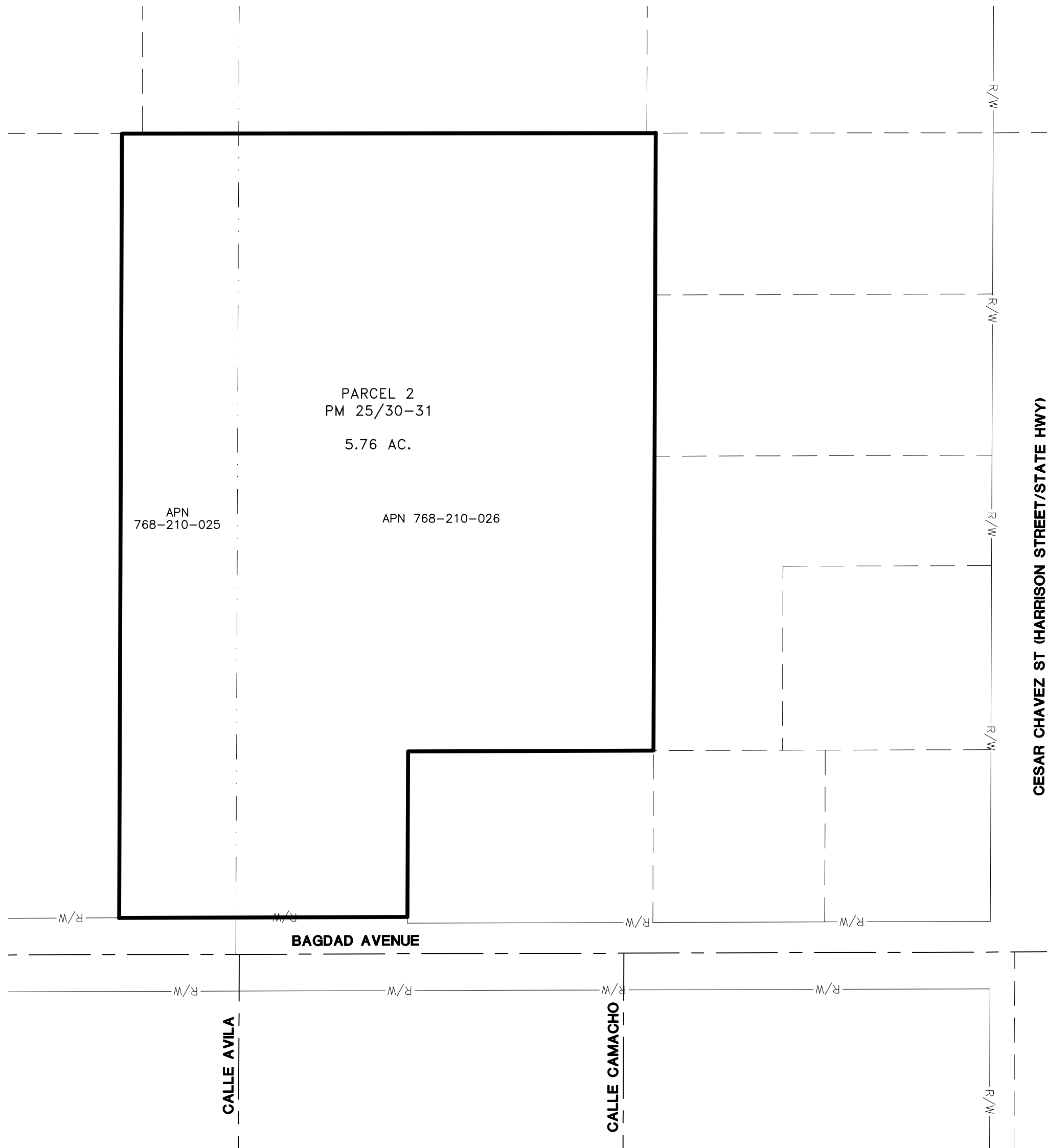
FILED THIS _____ DAY OF _____, 20__, AT THE HOUR OF _____ O'CLOCK _____ M. IN THE BOOK _____ PAGES _____ OF MAPS OF ASSESSMENT AND COMMUNITY FACILITIES DISTRICT AND AS INSTRUMENT NO. _____ IN THE OFFICE OF THE COUNTY RECORDERS IN THE COUNTY OF RIVERSIDE, STATE OF CALIFORNIA.

PETER ALDANA
 ASSESSOR-COUNTY CLERK-RECORDER
 COUNTY OF RIVERSIDE
 STATE OF CALIFORNIA

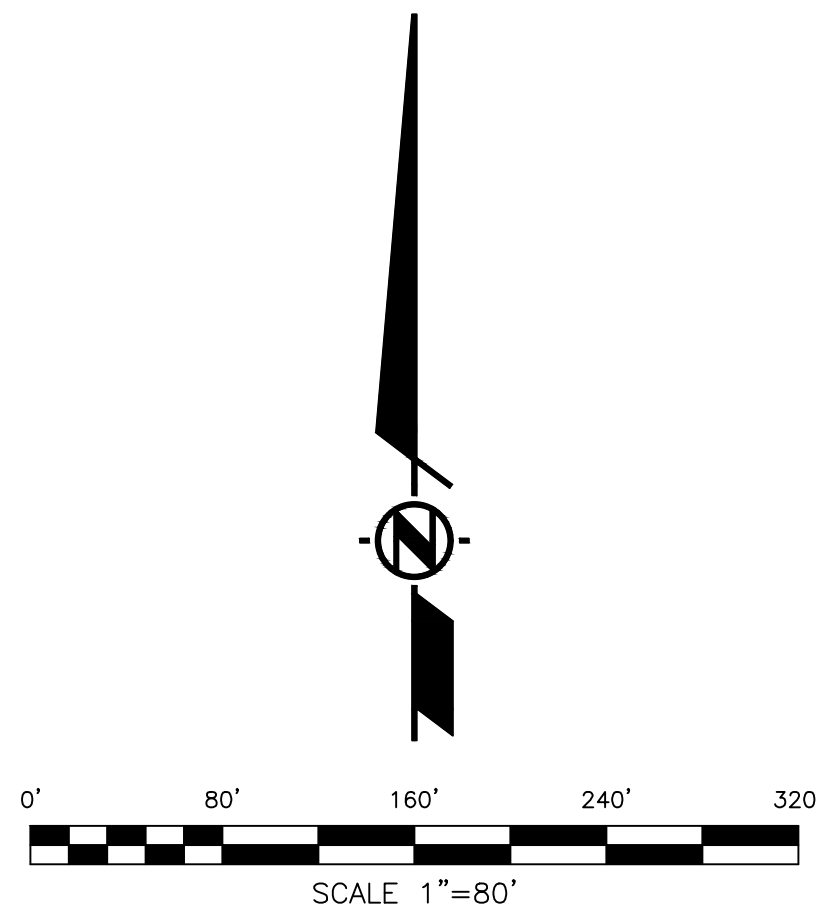
REFERENCE IS MADE TO THAT BOUNDARY MAP OF COMMUNITY FACILITIES DISTRICT NO. 2005-1 (LAW ENFORCEMENT, FIRE AND PARAMEDIC SERVICES) OF THE CITY OF COACHELLA RECORDED WITH THE RIVERSIDE COUNTY RECORDER'S OFFICE ON SEPTEMBER 7, 2005, IN BOOK 63 OF MAPS OF ASSESSMENT AND COMMUNITY FACILITIES DISTRICTS, PAGE 100, AS INSTRUMENT NO. 2005-0737672.

THE LINES AND DIMENSIONS OF EACH LOT OR PARCEL SHOWN ON THIS DIAGRAM SHALL BE THOSE LINES AND DIMENSIONS AS SHOWN ON THE RIVERSIDE COUNTY ASSESSORS MAPS FOR THOSE PARCELS LISTED.

THE RIVERSIDE COUNTY ASSESSORS MAPS SHALL GOVERN FOR ALL DETAILS CONCERNING THE LINES AND DIMENSIONS OF SUCH LOTS OR PARCELS.



VICINITY MAP
 N.T.S.



MSA CONSULTING, INC.
 > PLANNING > CIVIL ENGINEERING > LAND SURVEYING
 34200 Bob Hope Drive, Rancho Mirage, CA 92270
 760.320.9811 msaconsultinginc.com

