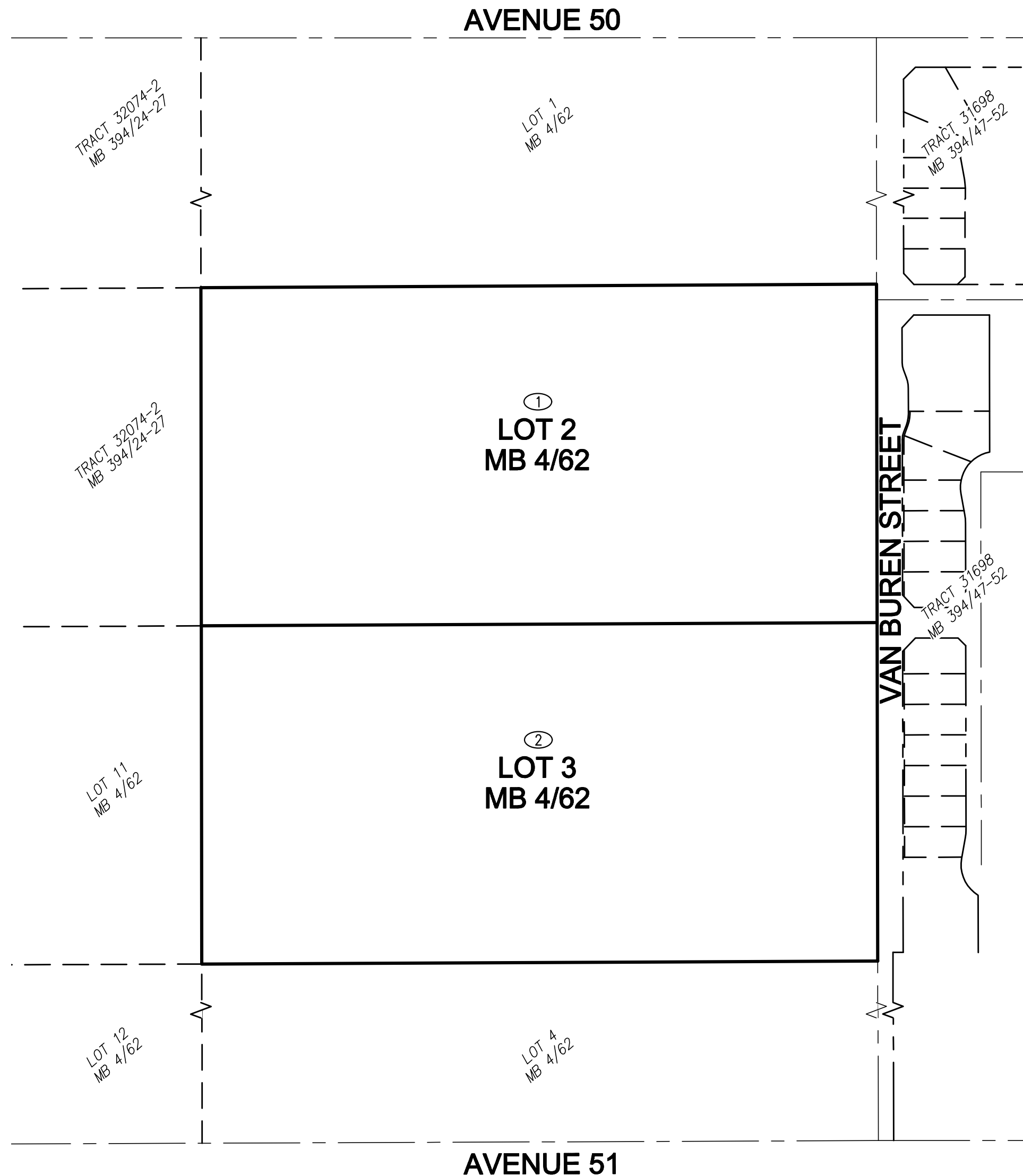
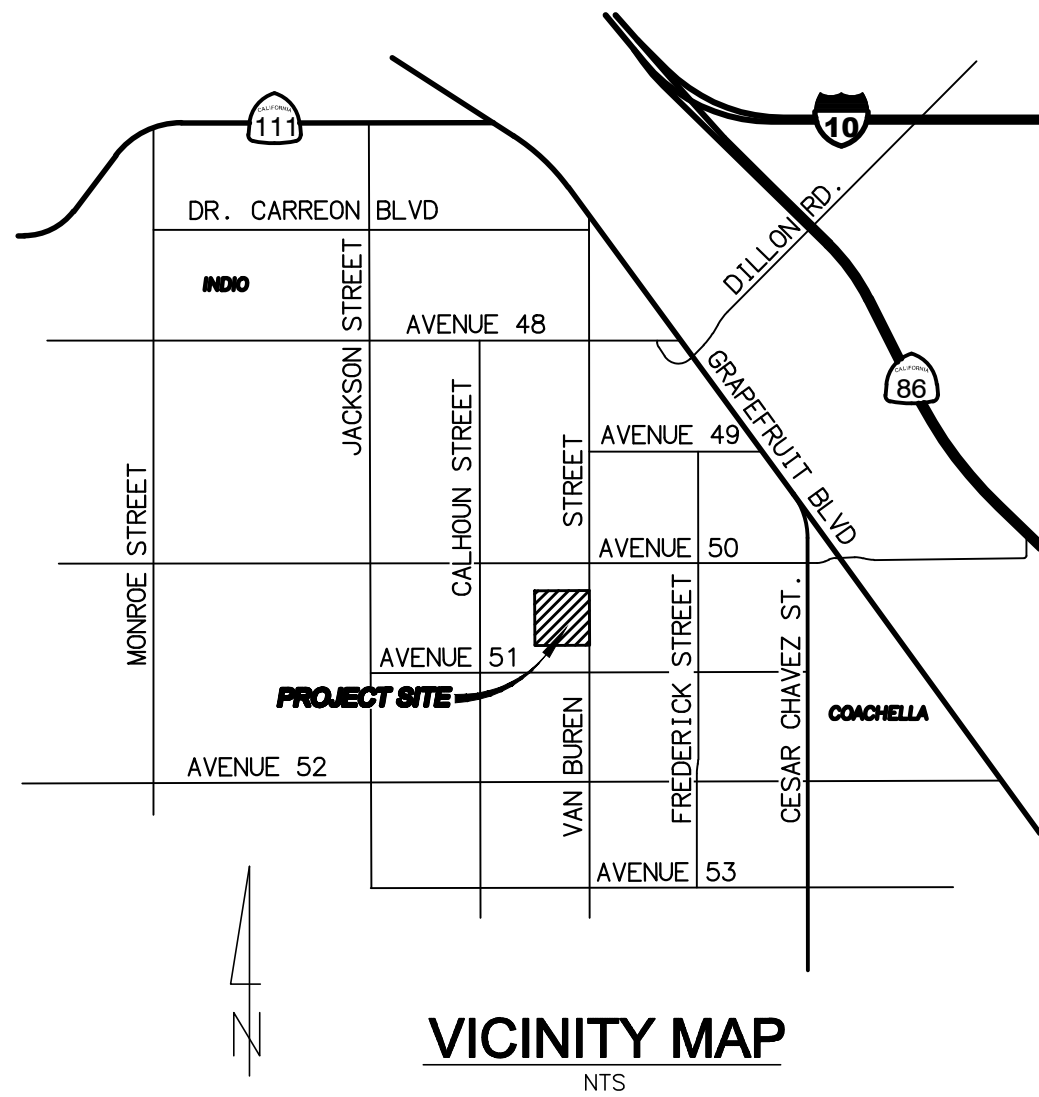


IN THE CITY OF COACHELLA, COUNTY OF RIVERSIDE, STATE OF CALIFORNIA
ANNEXATION MAP NO. XX
TRACTS 38557 AND 38557-1
COMMUNITY FACILITIES DISTRICT 2005-1
(LAW ENFORCEMENT, FIRE AND
PARAMEDIC SERVICES)

NE QUARTER OF SECTION 1, TOWNSHIP 6 SOUTH, RANGE 7 EAST, SAN BERNARDINO MERIDIAN



FILED IN THE OFFICE OF THE CITY CLERK THIS _____ DAY OF _____, 20____.

I HEREBY CERTIFY THAT THE WITHIN MAP SHOWING PROPOSED BOUNDARIES OF ANNEXATION NO. XX, TRACTS 38557 AND 38557-1, TO COMMUNITY FACILITIES DISTRICT NO. 2005-1 (LAW ENFORCEMENT, FIRE AND PARAMEDIC SERVICES), CITY OF COACHELLA, COUNTY OF RIVERSIDE, STATE OF CALIFORNIA, WAS APPROVED BY THE CITY COUNCIL OF THE CITY OF COACHELLA AT A REGULAR MEETING THEREOF, HELD ON _____ DAY OF _____, 20____, BY ITS RESOLUTION NO. _____

BY: _____
 CITY CLERK
 CITY OF COACHELLA

FILED THIS _____ DAY OF _____, 20____, AT THE HOUR OF _____ O'CLOCK _____ M. IN THE BOOK _____ PAGES _____ OF MAPS OF ASSESSMENTS AND COMMUNITY FACILITIES DISTRICTS AND AS INSTRUMENT NO. _____ IN THE OFFICE OF THE COUNTY RECORDERS IN THE COUNTY OF RIVERSIDE, STATE OF CALIFORNIA.

BY: _____
 COUNTY RECORDER
 COUNTY OF RIVERSIDE
 STATE OF CALIFORNIA

REFERENCE IS MADE TO THAT BOUNDARY MAP OF COMMUNITY FACILITIES DISTRICT NO. 2005-1 (LAW ENFORCEMENT, FIRE AND PARAMEDIC SERVICES) OF THE CITY OF COACHELLA RECORDED WITH THE RIVERSIDE COUNTY RECORDER'S OFFICE ON September 7, 2005, IN BOOK 63 OF MAPS OF ASSESSMENT AND COMMUNITY FACILITIES DISTRICTS, PAGE 100, AS INSTRUMENT NO. 2005-0737672.

THE LINES AND DIMENSIONS OF EACH LOT OR PARCEL SHOWN ON THIS DIAGRAM SHALL BE THOSE LINES AND DIMENSIONS AS SHOWN ON THE RIVERSIDE COUNTY ASSESSORS MAPS FOR THOSE PARCELS LISTED.

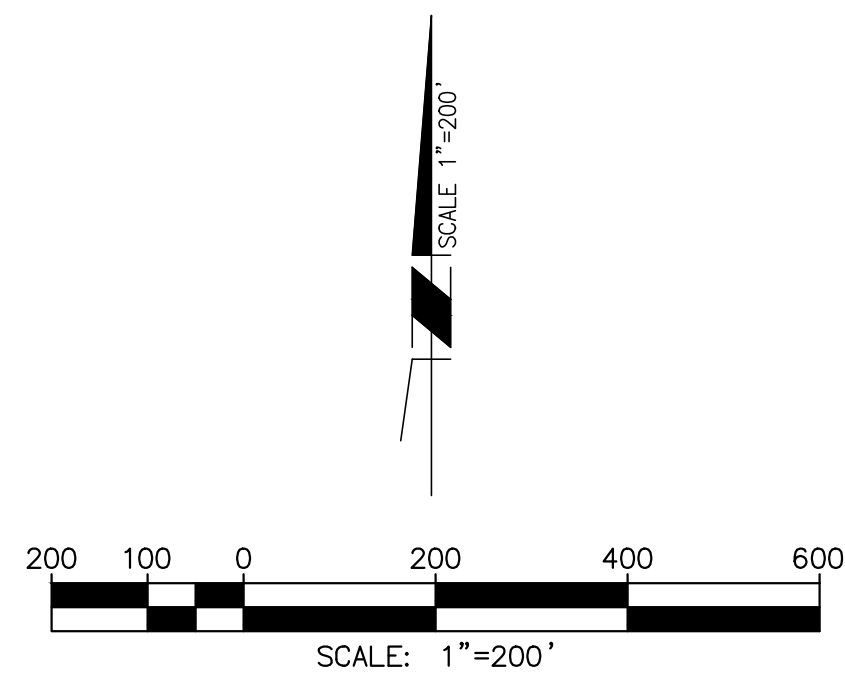
THE RIVERSIDE COUNTY ASSESSORS MAPS SHALL GOVERN FOR ALL DETAILS CONCERNING THE LINES AND DIMENSIONS OF SUCH LOTS OR PARCELS.

ASMT. NO.	ASSESSOR'S PARCEL NO.	ACREAGE
1	779-280-002	19.80
2	779-320-001	19.55

LEGEND

— ANNEXATION BOUNDARY
 # ASSESSMENT NUMBER

OWNER
 PULTE HOME COMPANY, LLC
 27401 LOS ALTOS, SUITE 400
 MISSION VIEJO, CA 92691



Michael Baker
INTERNATIONAL

75410 Gerald Ford Drive, Suite 100
 Palm Desert, CA 92211
 MBAKERINTL.COM
 Phone: (760) 346-7481