



STAFF REPORT 2/5/2025

TO: Planning Commission Chair and Commissioners

FROM: Kendra Reif, Principal Planner

SUBJECT: CV Link Conceptual Connector Plan Design for the CV Link Connector Plans located at the northwest corner of Avenue 52 and Sunset Drive Applicant: City of Coachella.

STAFF RECOMMENDATION:

Staff is requesting feedback from the Planning Commission on the proposed CV Link Conceptual Connect Plan.

BACKGROUND:

CV Link is a 40-plus-mile bicycle pedestrian, and low-speed electric vehicle pathway that extends from Palm Springs to Coachella. CV Link is intended to provide a continuous transportation and recreation route to connect the Coachella Valley cities. The Coachella Valley Association of Governments (CVAG) is the project facilitator for this project. Construction of the CV Link began in 2020 and CVAG's estimated time of completion for the project is in 2025. The proposed site selection was determined by City of Coachella staff in partnership with CVAG. Staff believes that the intersection of Avenue 52 and Sunset Drive will become a strategic Active Transportation Program (ATP) intersection in the future and will help tie together the CV Link and future bike paths in the immediate vicinity.

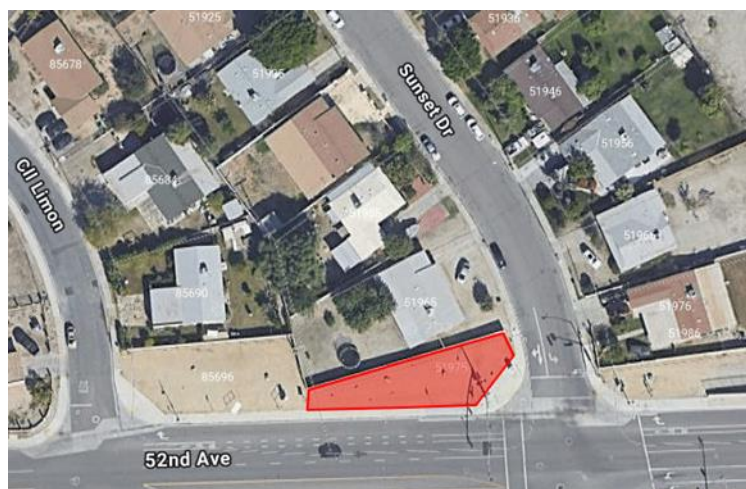


Figure 1 - Project Vicinity

SITE PLAN:

The below exhibit depicts the proposed CV Link Connector plan that is proposed at the northwest corner of Avenue 52 and Sunset Drive. The proposed site area will have landscaping, decomposed granite, and variations of concrete. The site will also contain benches, a hydration station, a map kiosk, bike racks, trash and recycling contained, and a shade structure. The site area is proposing to utilize an orange and blue color palette and modern shade structure design that is consistent with the CV Link trail system throughout the Coachella Valley.



Figure 2 – East Perspective

LANDSCAPING:

The project is proposing to utilize very low to moderate water use trees, shrubs, flowers, and cacti. Irrigation will be provided via a newly installed irrigated drip system that will be installed as a part of this project. The proposed landscaping includes but is not limited to one Royal Poinciana, one Mulga, twenty-four Regal Mists, seven Boxwood Beauty, and four Twin Flowering Agave. The City and CVAG have been in discussion about landscaping the parcel in its entirety. The nearby Shady Lane Park at the Northeast corner of Avenue 52 and Shady Lane is a long-standing park that has been redeveloped into an edible park with fruit trees labelled according to their variety (fig, citrus, apple, pomegranate, persimmon and grapes). The Commission may consider incorporating the edible landscape theme versus the current proposal which is entirely ornamental varieties. Landscaping will be maintained by the City of Coachella.

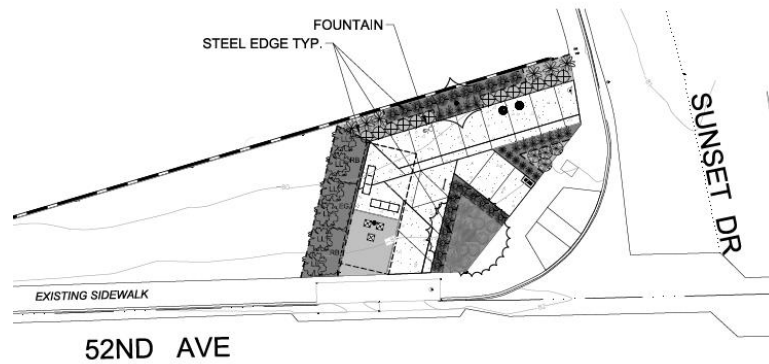


Figure 3 – Proposed Landscape Plan

DIRECTION

Staff recommends that the Planning Commission provide feedback to the City Engineer and the Development Services Department on the proposed CV Link Conceptual Connect Plan. Planning Commission may provide feedback pertaining to the hardscape, pavement color, and landscaping and plant palette utilized.

Attachments:

1. CV Link Sunset Drive Access Point Pavement Plans
2. CV Link Landscape Construction Plans
3. CV Link Existing Site Rendering