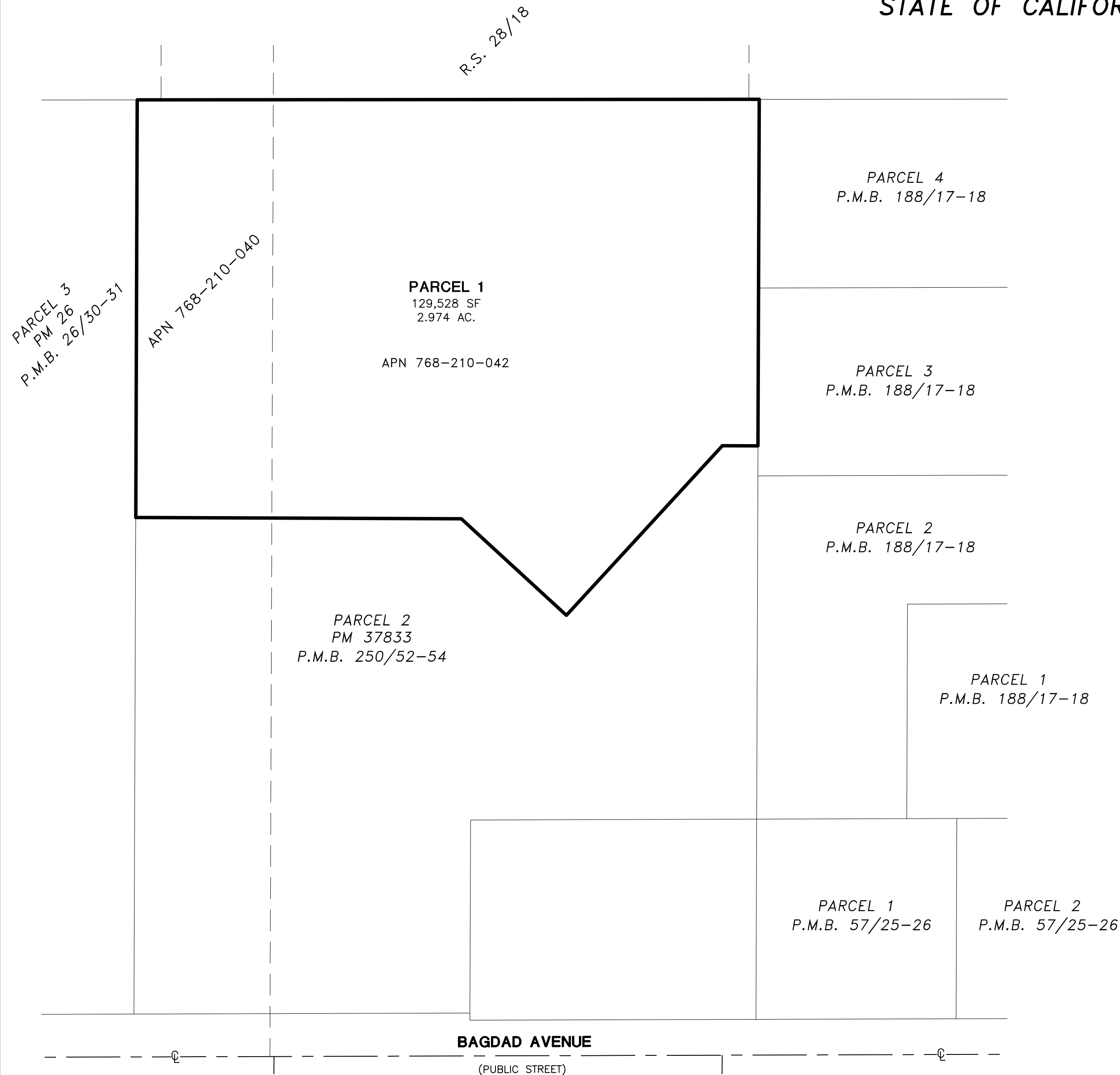


ANNEXATION MAP NO. 32
PARCEL MAP NO. 37833
COMMUNITY FACILITIES DISTRICT NO. 2005-1
(LAW ENFORCEMENT, FIRE AND PARAMEDIC SERVICES)
CITY OF COACHELLA
COUNTY OF RIVERSIDE
STATE OF CALIFORNIA



FILED IN THE OFFICE OF THE CITY CLERK THIS ____ DAY OF _____, 20__.

I HEREBY CERTIFY THE WITHIN MAP SHOWING THE PROPOSED BOUNDARY OF ANNEXATION MAP NO. ____, PARCEL 1 OF PARCEL MAP NO. 37833, TO COMMUNITY FACILITIES DISTRICT NO. 2005-1, (LAW ENFORCEMENT, FIRE AND PARAMEDIC SERVICES). CITY OF COACHELLA, COUNTY OF RIVERSIDE, STATE OF CALIFORNIA, WAS APPROVED BY THE CITY COUNCIL OF THE CITY OF COACHELLA AT A REGULAR MEETING THEREOF, HELD ON THE ____ DAY OF _____, 20__, BY ITS RESOLUTION NO. _____.

ANDREA CARRANZA
DEPUTY CITY CLERK
CITY OF COACHELLA

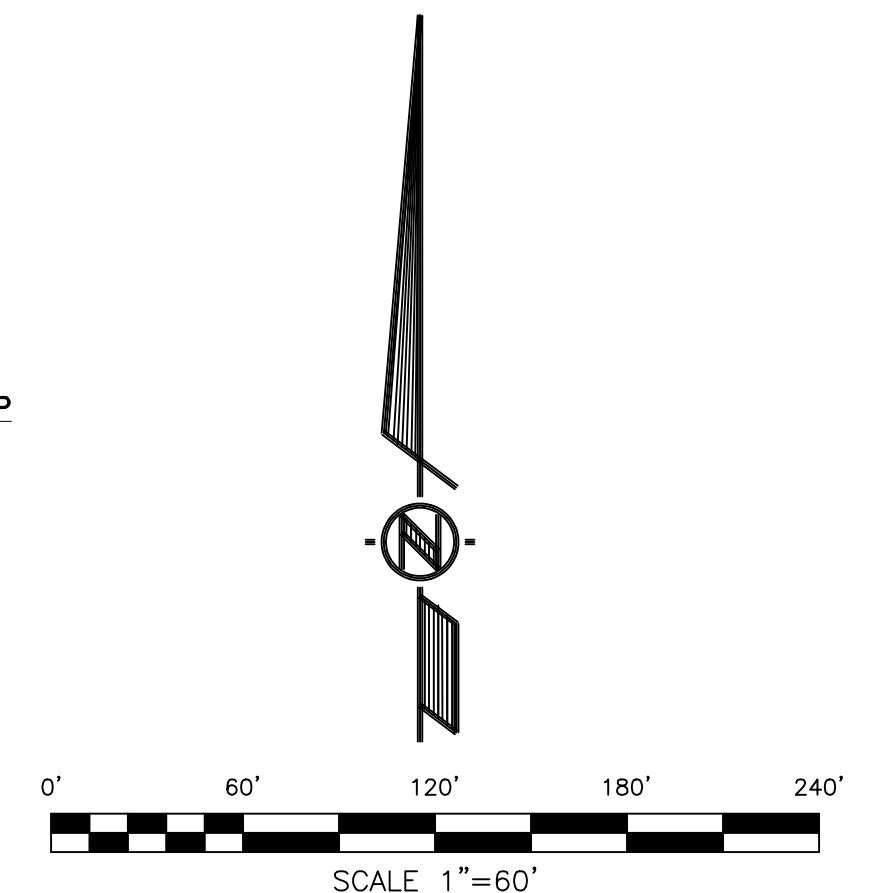
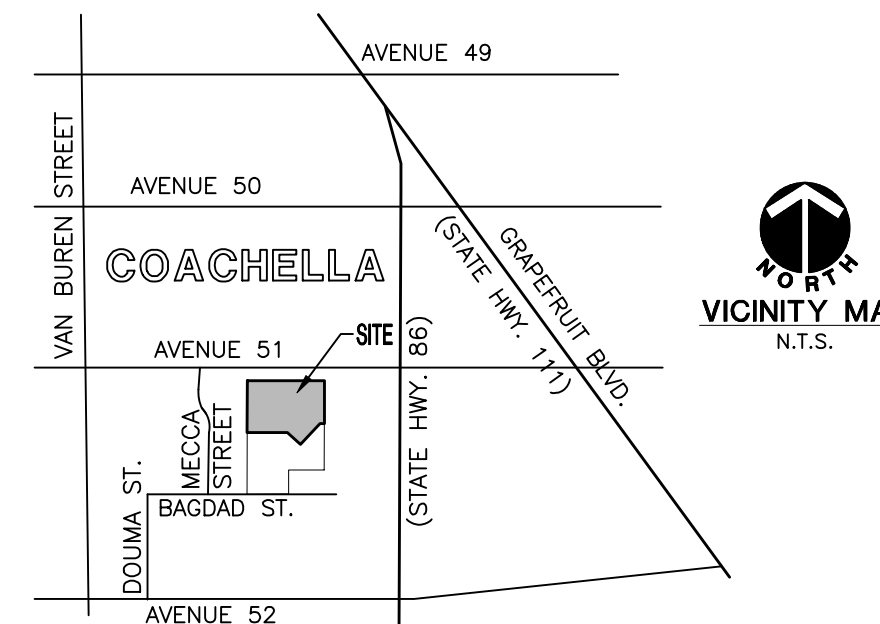
FILED THIS ____ DAY OF _____, 20__, AT THE HOUR OF _____ O'CLOCK _____M. IN THE OFFICE OF THE COUNTY RECORDERS IN THE COUNTY OF RIVERSIDE, STATE OF CALIFORNIA.

PETER ALDANA
ASSESSOR-COUNTY CLERK-RECORDER
COUNTY OF RIVERSIDE
STATE OF CALIFORNIA

REFERENCE IS MADE TO THAT BOUNDARY MAP OF COMMUNITY FACILITIES DISTRICT NO. 2005-1 (LAW ENFORCEMENT, FIRE AND PARAMEDIC SERVICES) OF THE CITY OF COACHELLA RECORDED WITH THE RIVERSIDE COUNTY RECORDER'S OFFICE ON SEPTEMBER 7, 2005, IN BOOK 63 OF MAPS OF ASSESSMENT AND COMMUNITY FACILITIES DISTRICTS, PAGE 100, AS INSTRUMENT NO. 2005-0737672.

THE LINES AND DIMENSIONS OF EACH LOT OR PARCEL SHOWN ON THIS DIAGRAM SHALL BE THOSE LINES AND DIMENSIONS AS SHOWN ON THE RIVERSIDE COUNTY ASSESSORS MAPS FOR THOSE PARCELS LISTED.

THE RIVERSIDE COUNTY ASSESSORS MAPS SHALL GOVERN FOR ALL DETAILS CONCERNING THE LINES AND DIMENSIONS OF SUCH LOTS OR PARCELS.



MSA CONSULTING, INC.
 PLANNING ■ CIVIL ENGINEERING ■ LAND SURVEYING
 34200 BOB HOPE DRIVE ■ RANCHO MIRAGE ■ CA 92270
 TELEPHONE (760) 320-9811 ■ FAX (760) 323-7893