



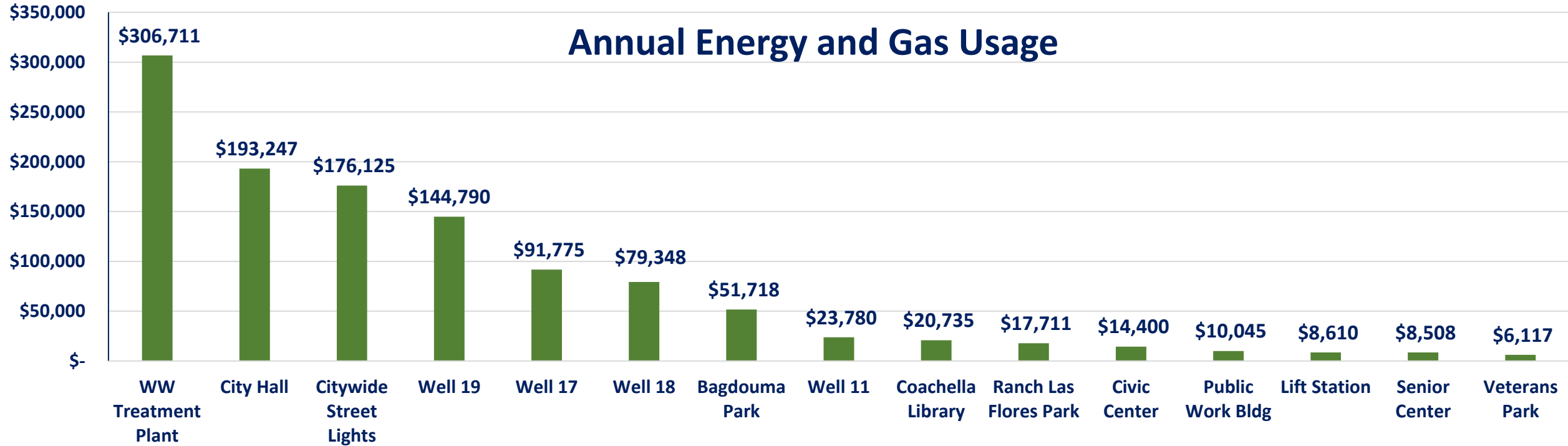
City of Coachella

Energy
Efficiency Project



Current Energy Costs

Annual Energy and Gas Usage



Total Annual Cost for Gas and Electric
\$1,139,220

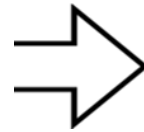
Rec. Scope of Work

	Lighting			Mechanical / Pumping		Controls	Renewables	
	Interior LED Lighting Upgrades	Exterior LED Lighting Upgrades	Decorative Lighting	HVAC Unit Replacement [Package Units]	Pumping Upgrades	Web-Based Globally Programmable Thermostats	Solar Photovoltaic	EV Charging
Bagdouma Park	✓	✓	6 th Street		✓			
Bagdouma Park Community Center	✓					✓		
Civic Center				✓ (2)		✓	✓	✓
Public Works Bldg.	✓	✓				✓		
Rancho Las Flores Park		✓						
Citywide Street Lights		✓						
Wastewater Treatment Plant								✓

Lighting – All Interior Lighting

Interior LED Upgrades

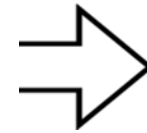
- (3) Sites
 - Bagdouma Park
 - Bagdouma Community Center
 - Public Works Building



Lighting – All Sites Combined

Exterior LED Upgrades

- (3) Sites
 - Bagdouma Park
 - Rancho Las Flores Park
 - Public Works Building



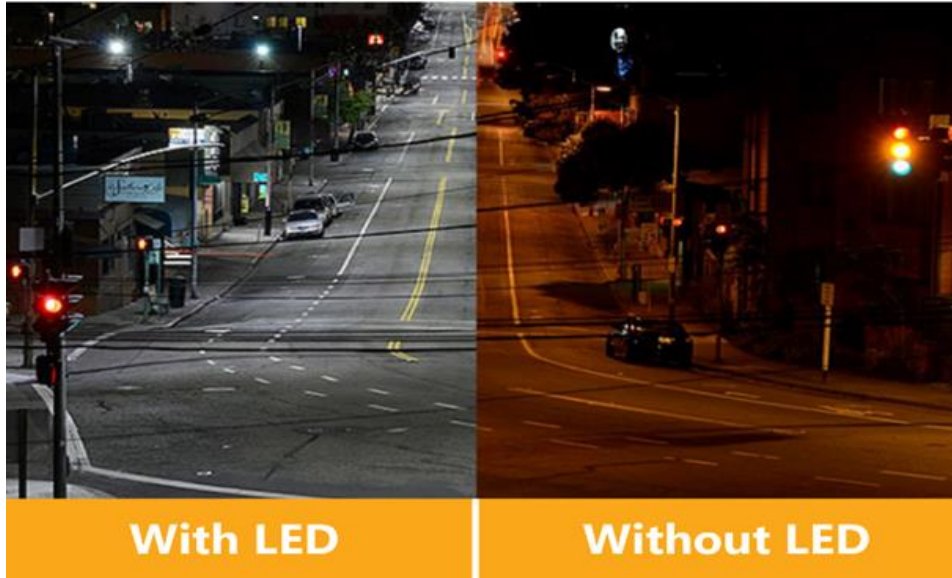
Lighting – All Sites Combined

Street Lighting

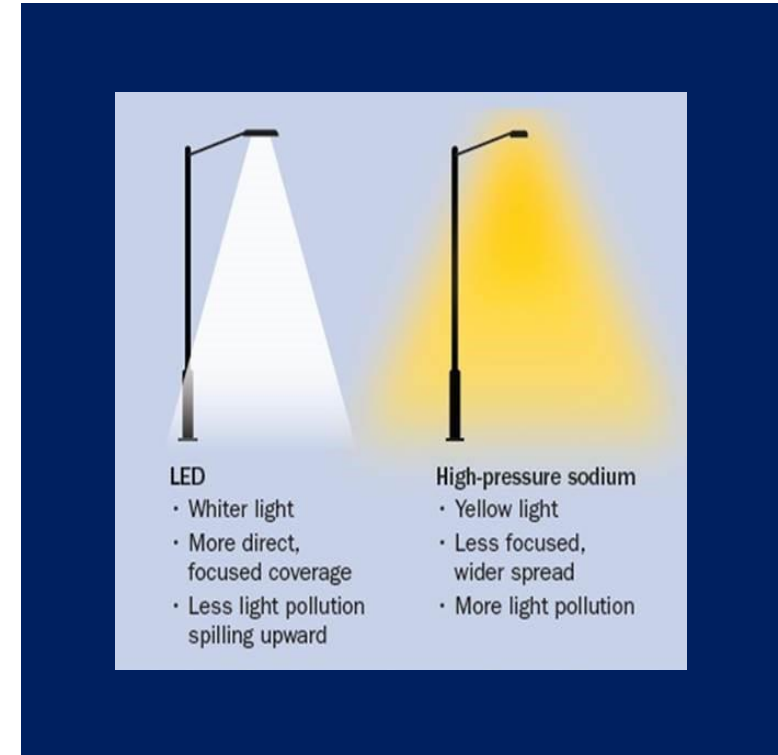
- Exterior LED Upgrades
 - Citywide



Streetlighting – Before & After



LED vs High Pressure Sodium (HPS)



converting streetlights to LED:
594,240 kWh savings

Lighting – All Sites Combined

Decorative Lighting

- Exterior Decorative Lighting
 - 6th Street



Example - Decorative Lighting of Previous Customer

HVAC / Mechanical

HVAC Package Unit Replacements

- (1) Site
 - Civic Center

Average Age

Average age of HVAC units being replaced is over 20+ years



Pumping

- Pump VFD Upgrades w/ Controls
 - Bagdouma Park

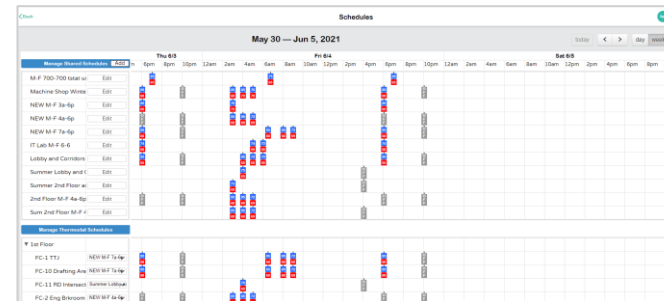
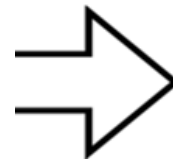


Bagdouma Park Pool

Controls

HVAC Controls System

- Install New Pelican Controls
- Open Protocol Wireless Globally Programmable T-Stat
 - (3) Sites
 - Bagdouma Community Center
 - Civic Center
 - Public Works Building



Renewables – Solar

Solar System

- Install Solar Photovoltaic (PV) System
 - (2) Sites
- EV Charging
 - (1) Site
 - 2 Chargers

System Specifications

589 kW DC

Carport/ Ground Mount Layouts



Solar Layout w/ EV Charging

Civic Center

72.2 kW

Carport Shade Structure

*Will include (2) EV chargers,
totaling (4) charging ports

Annual Estimated Production:
135,146 kWh



**The material within this presentation is proprietary information of Alliance Companies, LLC and cannot be shared or communicated to anyone without the expressed written consent from a principal within Alliance.*

Solar Layout

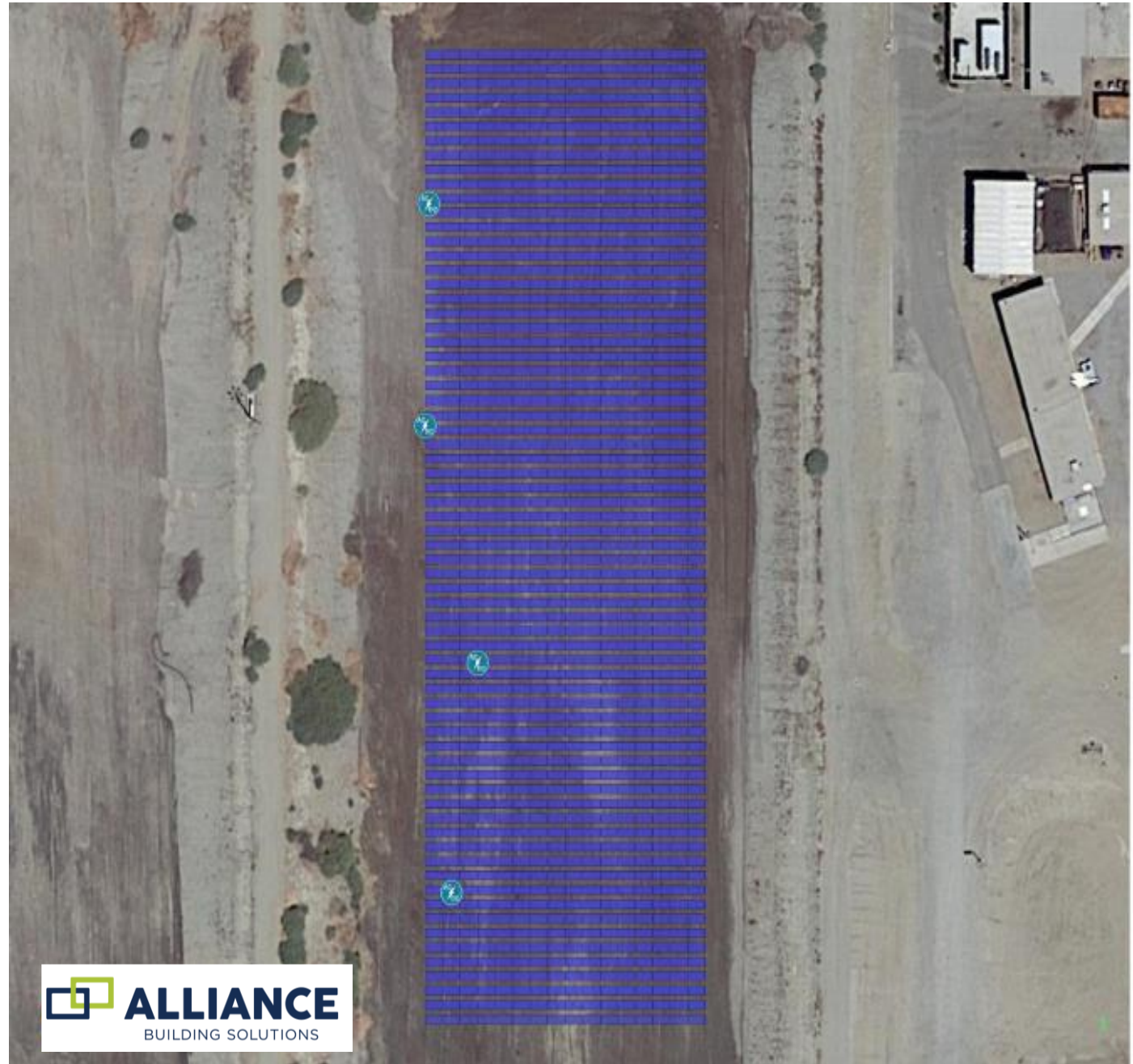
Wastewater Treatment

516 kW

Ground Mount Structure

Annual
Estimated
Production:
1,059,466 kWh

88% Offset
Following
Project
Implementation



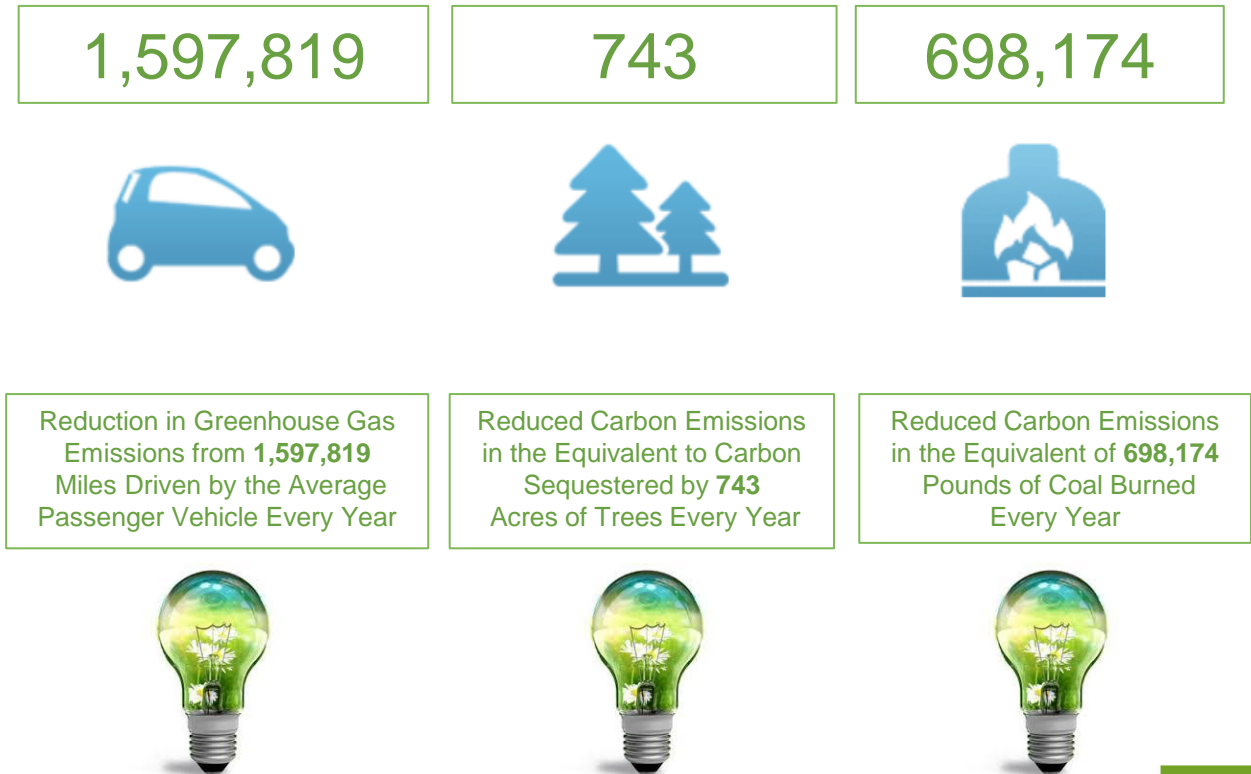
*The material within this presentation is proprietary information of Alliance Companies, LLC and cannot be shared or communicated to anyone without the expressed written consent from a principal within Alliance.

Project Benefits & Environmental Attributes

Project Benefits

- ☐ Major reduction in utility, maintenance, and operational costs; offsetting a significant amount of Citywide energy usage
- ☐ Addressing failing infrastructure and major lighting, HVAC/mechanical, and control needs throughout various City facilities
- ☐ Over \$20M of total project savings
- ☐ Project funded by savings
- ☐ 4217 Design-Build approach
- ☐ Allows Coachella to take strides toward investments into clean energy in order to meet climate action goals, while providing a sustainability dynamic in reaching a carbon neutral future

Environmental Attributes





Project Overview – City Facilities & WWTP

Fiscal Overview

Total Project Amount

\$7,157,601

Total Project Savings

\$20,772,193

Estimated 1st Year Savings

\$1,517,899

Scope Overview

- ☑ LED Lighting Upgrades ————— (4) Sites
- ☑ Street Light Upgrades ————— Citywide
- ☑ Decorative Lighting ————— 6th Street
- ☑ HVAC/ Pumping Upgrades ————— (2) Sites
- ☑ Controls Upgrades ————— (3) Sites
- ☑ Solar PV ————— (2) Sites
- ☑ EV Charging ————— (1) Site



ALLIANCE
BUILDING SOLUTIONS, INC

www.absenergy.com

