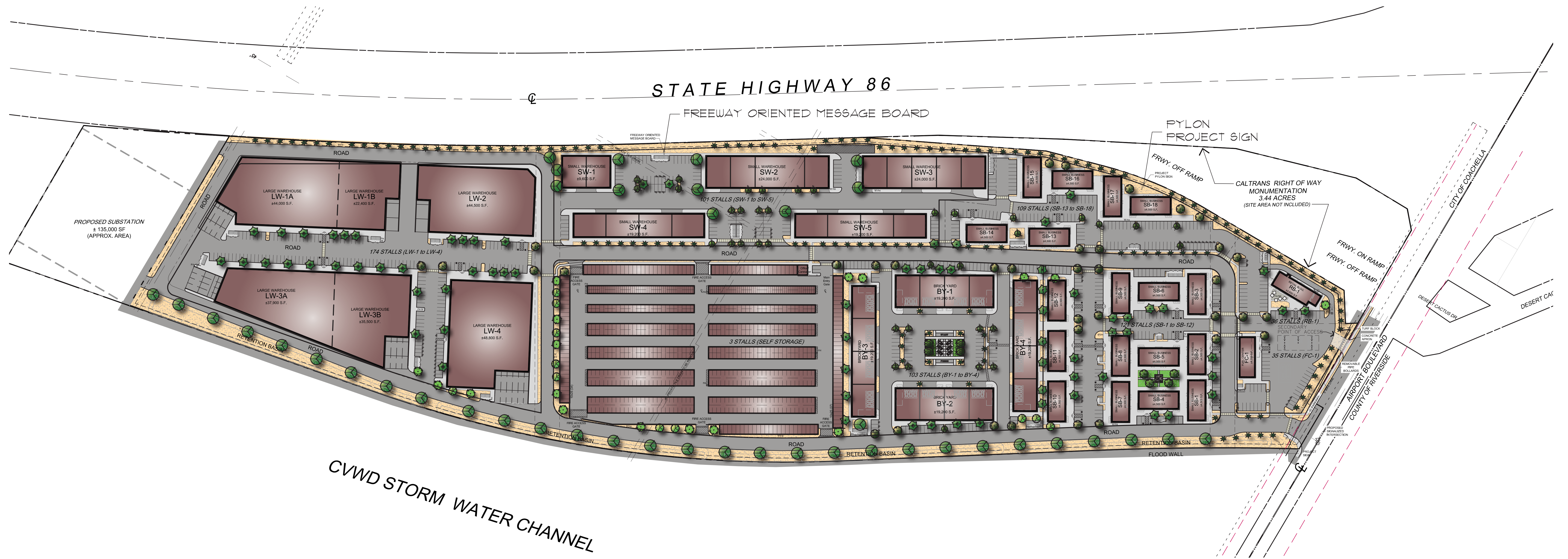


# CONCEPTUAL LANDSCAPE PLAN



## PROPOSED PLANT LIST

SYMBOL	QTY.	BOTANICAL NAME COMMON NAME	SIZE	WATER NOTES USE
<b>TREES &amp; PALMS</b>				
●		PROSOPIS GLANDULOSA "MAVERICK"	24" BOX SINGLE TRK. STND.	0.2 LOW
●		PARKINSONIA X "DESERT MUSEUM"	24" BOX SINGLE TRK. STND.	0.2 LOW
●		PARKINSONIA FRAECOX "FALO BREA"	24" BOX SINGLE TRK. STND.	0.2 LOW
★		ACACIA SALICINA "WILLOW ACACIA"	24" BOX SINGLE TRK. STND.	0.2 LOW
●		QUERCUS VIRGINIANA "SOUTHERN LIVE OAK"	24" BOX SINGLE TRK. STND.	0.3 MOD
*		PHOENIX DACTYLIFERA "DATE PALM"	18" BTH DIAMOND CUT PACIFIC DATE WD YOUNG NURSERY DAVID SMITH 760/250,1278 or eq	0.3 MOD
●		ACACIA ANEURA "MULSA"	24" BOX SINGLE TRK. STND.	0.2 LOW
●		CAESALPINIA CACALAGO "SMOOTHY"	24" BOX MULTI-TRK.	0.2 LOW
●		CORDIA BOISSIERI "TEXAS OLIVE"	24" BOX SINGLE TRK. STND.	0.2 LOW
●		CHAMAEROPS HUMILIS "MEDITERRANEAN FAN PALM"	24" BOX MULTI-TRK.	0.3 MOD

## SHRUBS

SENNA ARTEMISIOIDES "FEATHER CASHEA"	5 GAL.	0.2 LOW
LEUCOPHYLLUM LANGMANIAE "LYNN'S LEGACY"	5 GAL.	0.2 LOW
LEUCOPHYLLUM CANDIDUM "THUNDER CLOUD"	5 GAL.	0.2 LOW
LEUCOPHYLLUM ZYGOPHYLLUM "CIMARRON"	5 GAL.	0.2 LOW
TEGOMA "LYDIA"	5 GAL.	0.5 MOD
BOUSAINVILLEA "TORCH GLOW"	5 GAL.	0.5 MOD
BOUSAINVILLEA "PINK PIXIE"	5 GAL.	0.5 MOD
BOUSAINVILLEA "ROSENKA"	5 GAL.	0.5 MOD
EREMOPHILA MASCOLATA "VALENTINE"	5 GAL.	0.2 LOW
CALLISTEMON VIMINALIS "LITTLE JOHN"	5 GAL.	0.5 MOD
CARISSA "BOXWOOD BEAUTY"	5 GAL.	0.5 MOD
RUSSELLIA EQUISETIFORMIS "CORAL FOUNTAIN"	5 GAL.	0.5 MOD

## GROUND COVER & VINES

EREMOPHILA GLABRA "MANGENA GOLD"	5 GAL.	0.2 LOW
LANTANA "NEA GOLD"	5 GAL.	0.5 MOD
CARISSA "GREEN CARPET"	5 GAL.	0.5 MOD

## ACCENTS

DASYLIRION LONGISSIMA "MEXICAN GRASS TREE"	15 GAL.	0.2 LOW
DASYLIRION AHEBLERI "DESERT SPOON"	15 GAL.	0.2 LOW
FOUQUIERIA SPLENDENS "COCOTILLO"	15 GAL.	0.2 LOW 6-8 CANES MIN.
AGAVE WEEBERI "WEEBER'S AGAVE"	5 GAL.	0.1 VERY LOW
AGAVE ANGSTIFOLIA "MARGINATA"	5 GAL.	0.1 VERY LOW
HESPERALOE PARVIFLORA "RED TIPPED YUCCA"	5 GAL.	0.2 LOW
ECHINOCACTUS GRUBSONII "GOLDEN BARREL CACTUS"	12" DIA.	0.2 LOW

## PAVING, STONE, & GRAVEL MATERIALS

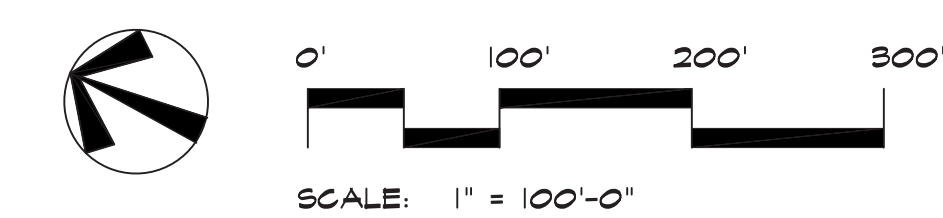
4"-8" DIA. BAJA CRESTA RUBBLE PROVIDE COMPLETE COVERAGE IN DESIGNATED AREAS
3/8" MINUS MOJAVE GOLD' DECOMPOSED GRANITE LAID 3" THICK
RUSTIC BROWN BOULDER 'A' - 2' 6" x 2' 6"
RUSTIC BROWN BOULDER 'B' - 2' x 2'
RUSTIC BROWN BOULDER 'C' - 1' 6" x 1' 6"

COACHELLA AIRPORT BUSINESS PARK

COACHELLA, CA

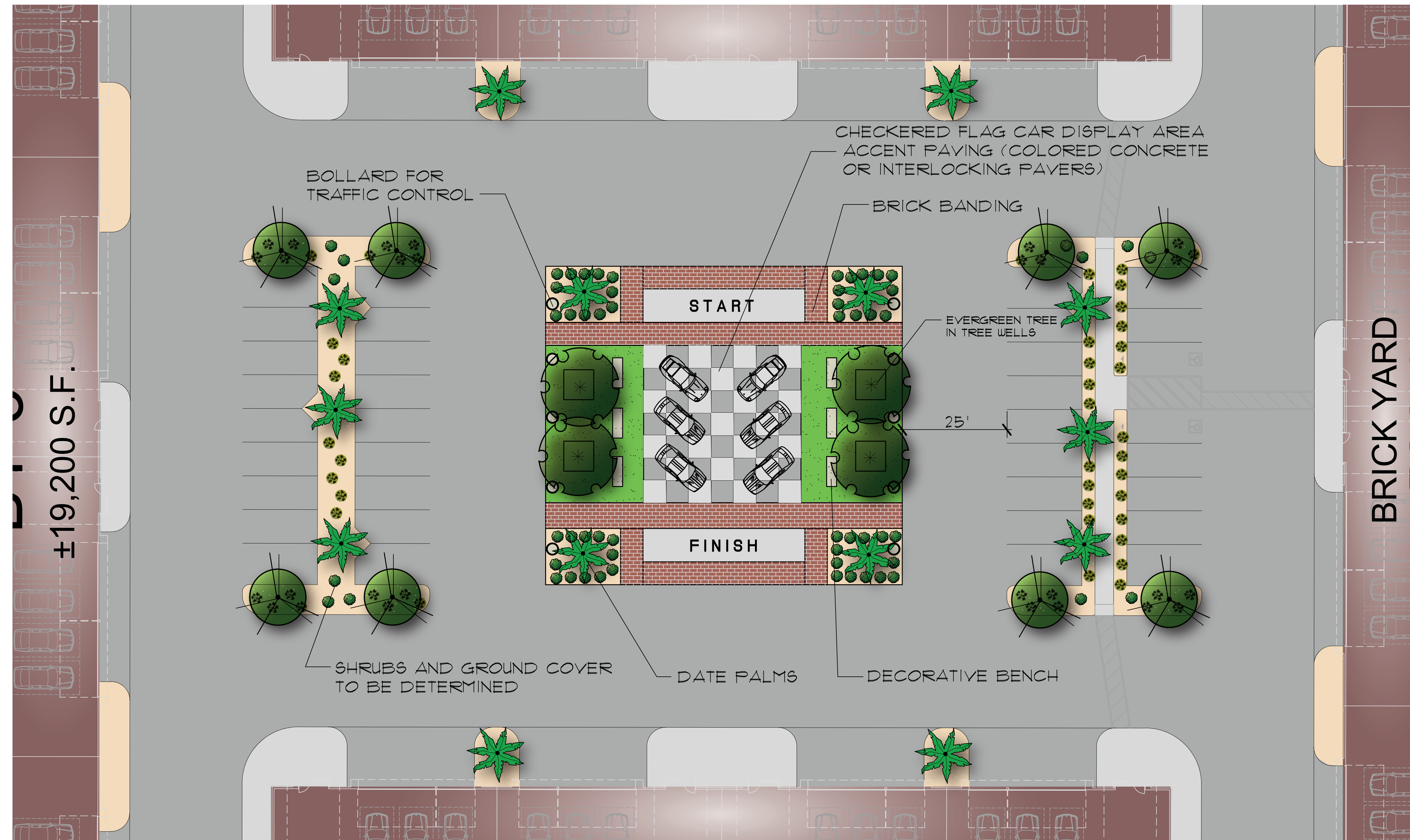
HAAGEN COMPANY, LLC

LP-1



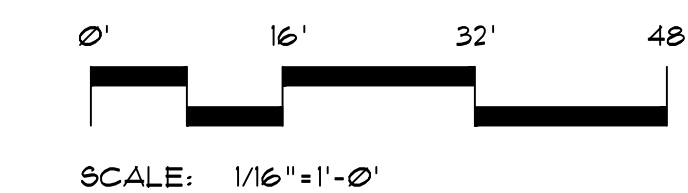
HERMANN DESIGN GROUP  
77-899 WOLF RD.  
SUITE 102  
PALM DESERT, CA  
92211  
LIC# 2754, EXP 04/30/22  
PH. (760) 777-9131  
FAX (760) 777-9132  
DATE 6-09-20 6/26/22

# CONCEPTUAL LANDSCAPE PLAN



BRICK YARD AREA

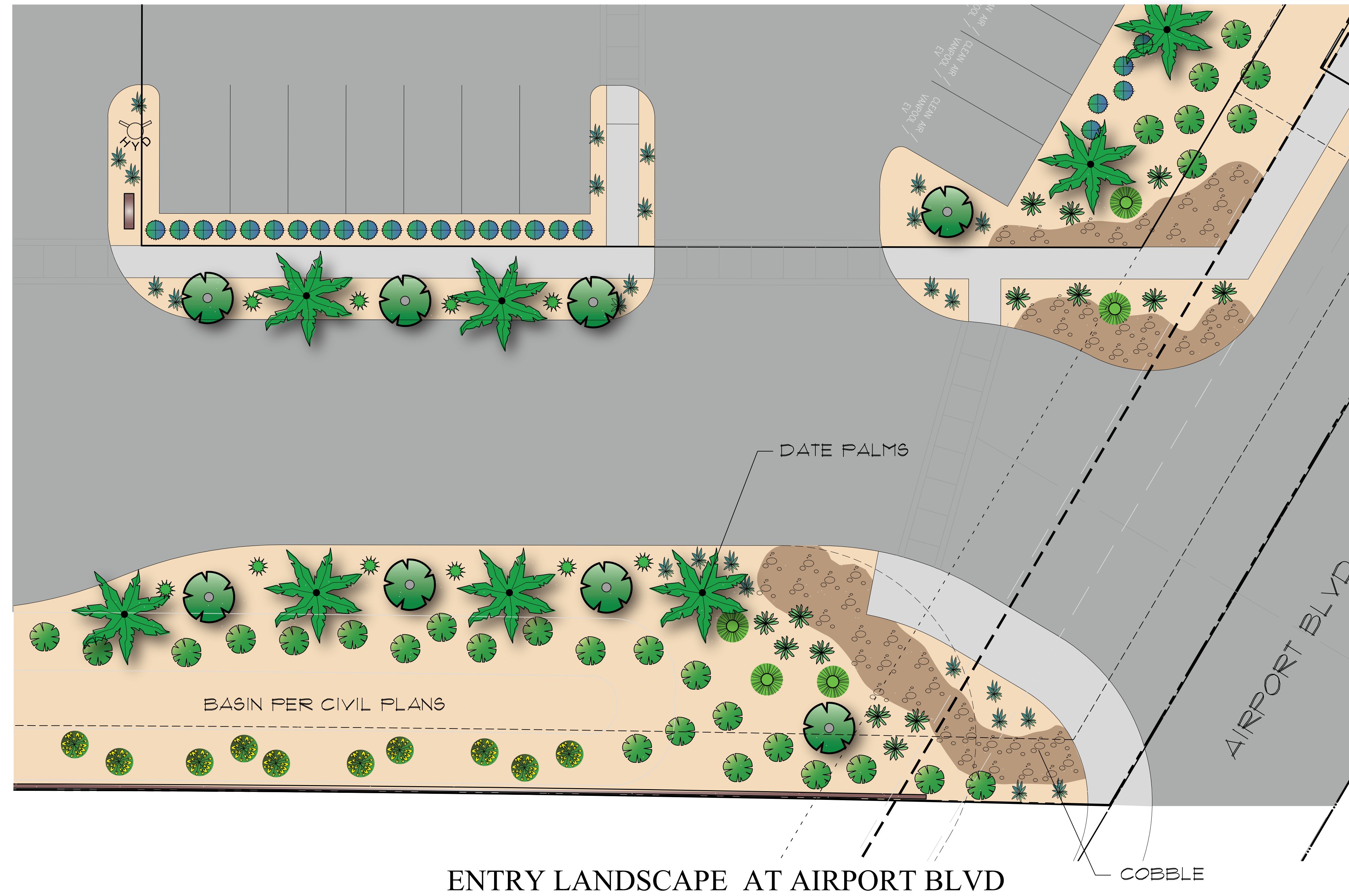
COACHELLA AIRPORT BUSINESS PARK  
 COACHELLA, CA  
 HAAGEN COMPANY, LLC



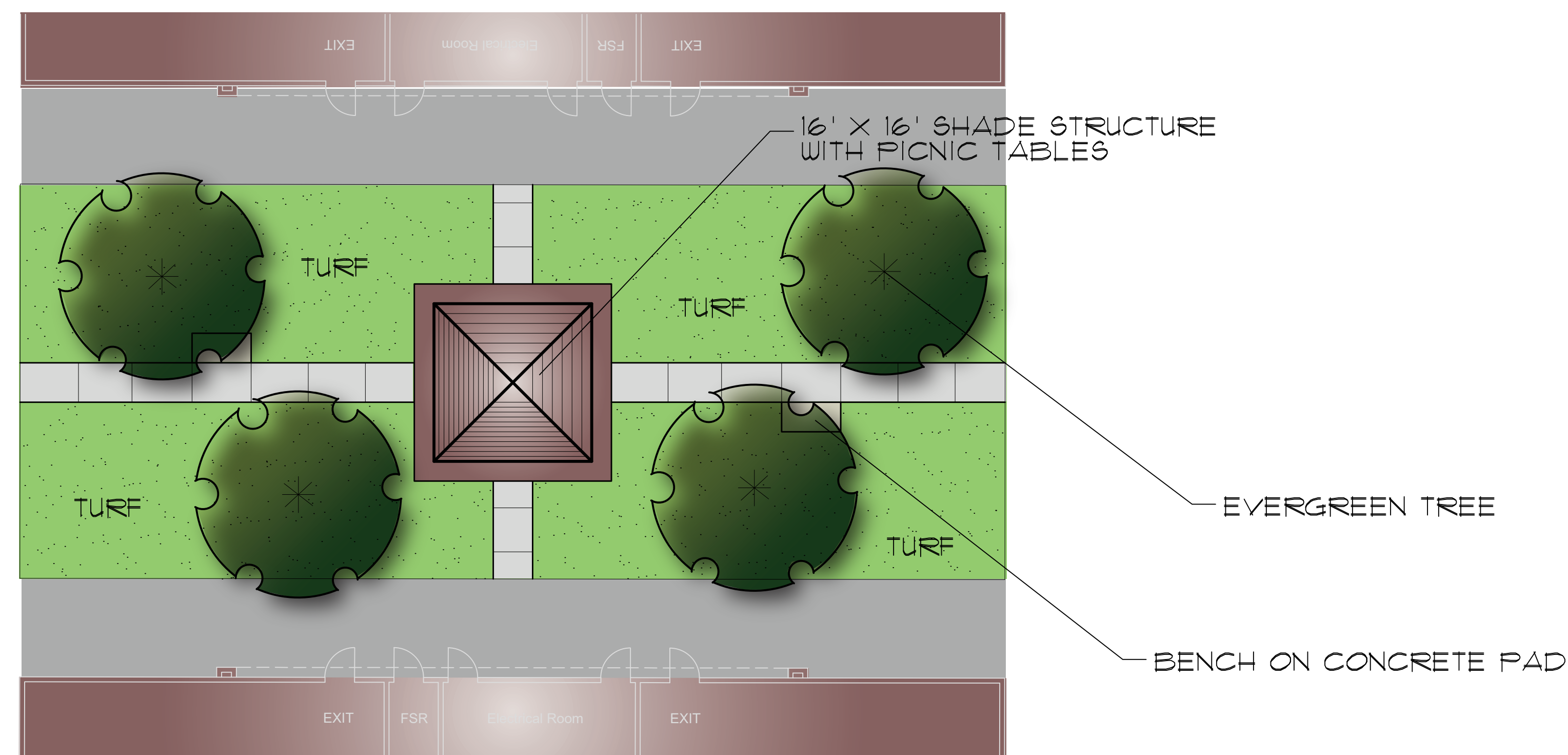
**LP-2**

**HERMANN DESIGN GROUP**  
 77-899 WOLF RD.  
 SUITE 102  
 PALM DESERT, CA  
 92211  
 LIC# 2754, EXP 04/30/22  
 PH. (760) 777-9131  
 FAX (760) 777-9132  
 DATE 6-09-20

# CONCEPTUAL LANDSCAPE PLAN



ENTRY LANDSCAPE AT AIRPORT BLVD



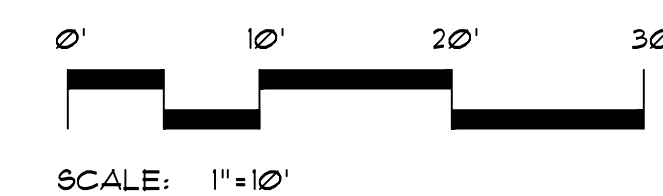
SMALL BUSINESS PICNIC AREA

COACHELLA AIRPORT BUSINESS PARK

COACHELLA, CA

HAAGEN COMPANY, LLC

LP-3



HERMANN DESIGN GROUP  
 77-899 WOLF RD.  
 SUITE 102  
 PALM DESERT, CA  
 92211  
 LIC# 2754, EXP 04/30/22  
 PH. (760) 777-9131  
 FAX (760) 777-9132  
 DATE 6-09-20