

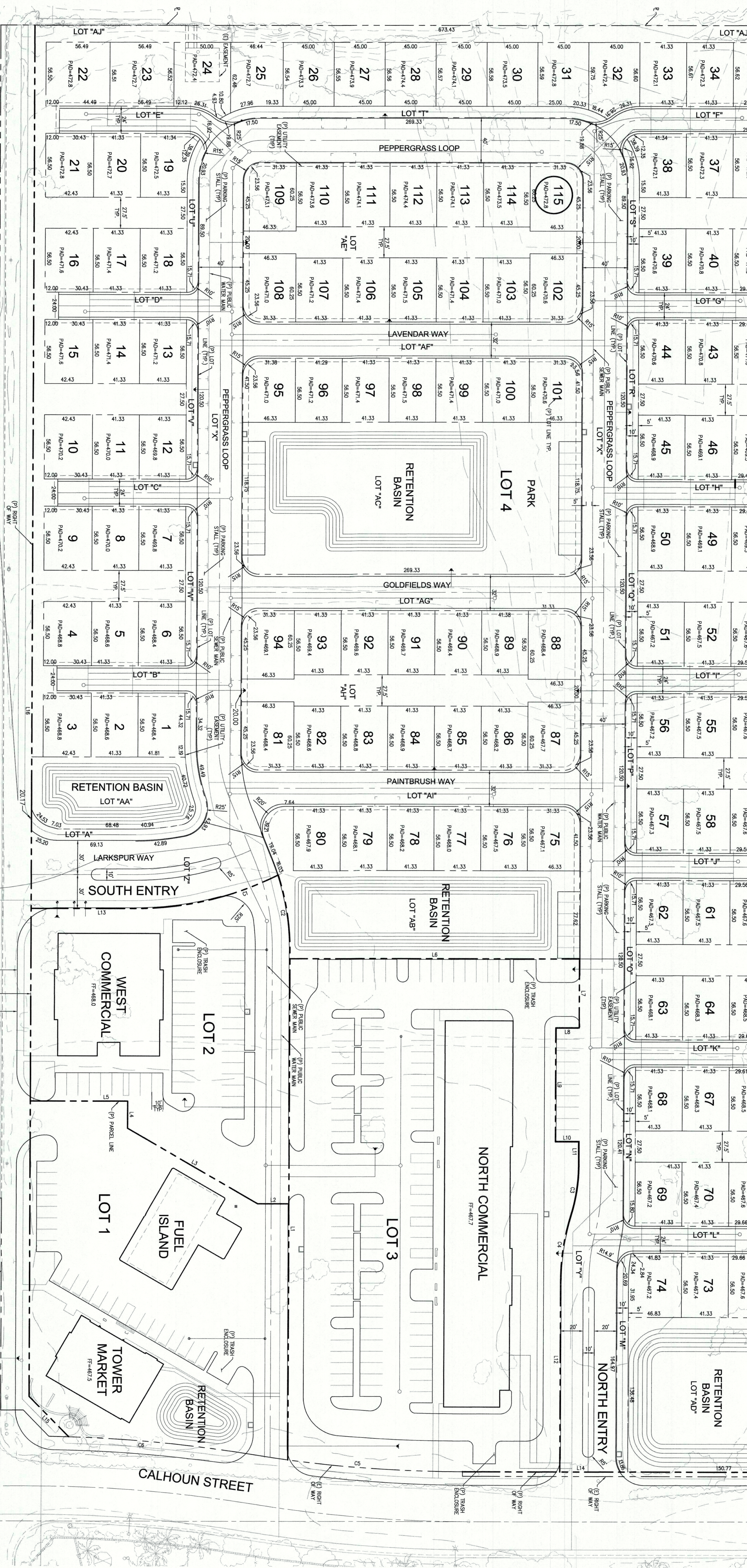
IN THE CITY OF COACHELLA, COUNTY OF RIVERSIDE, STATE OF CALIFORNIA
 TENTATIVE TRACT MAP NO. 37088
 SOUTHWEST QUARTER OF SECTION 36, TOWNSHIP 5 SOUTH, RANGE 7 EAST, SAN BERNARDINO MERIDIAN

LOT INFORMATION

LOT #	AREA (SQ. FT.)
1	2,327
2	2,325
3	2,327
4	2,325
5	2,325
6	2,325
7	2,325
8	2,325
9	2,327
10	2,325
11	2,325
12	2,325
13	2,325
14	2,327
15	2,325
16	2,325
17	2,325
18	2,325
19	2,325
20	2,325
21	2,327
22	2,325
23	2,325
24	2,325
25	2,325
26	2,325
27	2,325
28	2,325
29	2,325
30	2,325
31	2,325
32	2,325
33	2,325
34	2,325
35	2,325
36	2,325
37	2,325
38	2,325
39	2,325
40	2,325
41	2,325
42	2,325
43	2,325
44	2,325
45	2,325
46	2,325
47	2,325
48	2,325
49	2,325
50	2,325
51	2,325
52	2,325
53	2,325
54	2,325
55	2,325
56	2,325
57	2,325
58	2,325
59	2,325
60	2,325
61	2,325
62	2,325
63	2,325
64	2,325
65	2,325
66	2,325
67	2,325
68	2,325
69	2,325
70	2,325
71	2,325
72	2,325
73	2,325
74	2,325
75	2,325
76	2,325
77	2,325
78	2,325
79	2,325
80	2,325
81	2,325
82	2,325
83	2,325
84	2,325
85	2,325
86	2,325
87	2,325
88	2,325
89	2,325
90	2,325
91	2,325
92	2,325
93	2,325
94	2,325
95	2,325
96	2,325
97	2,325
98	2,325
99	2,325
100	2,325
101	2,325
102	2,325
103	2,325
104	2,325
105	2,325
106	2,325
107	2,325
108	2,325
109	2,325
110	2,325
111	2,325
112	2,325
113	2,325
114	2,325
115	2,325

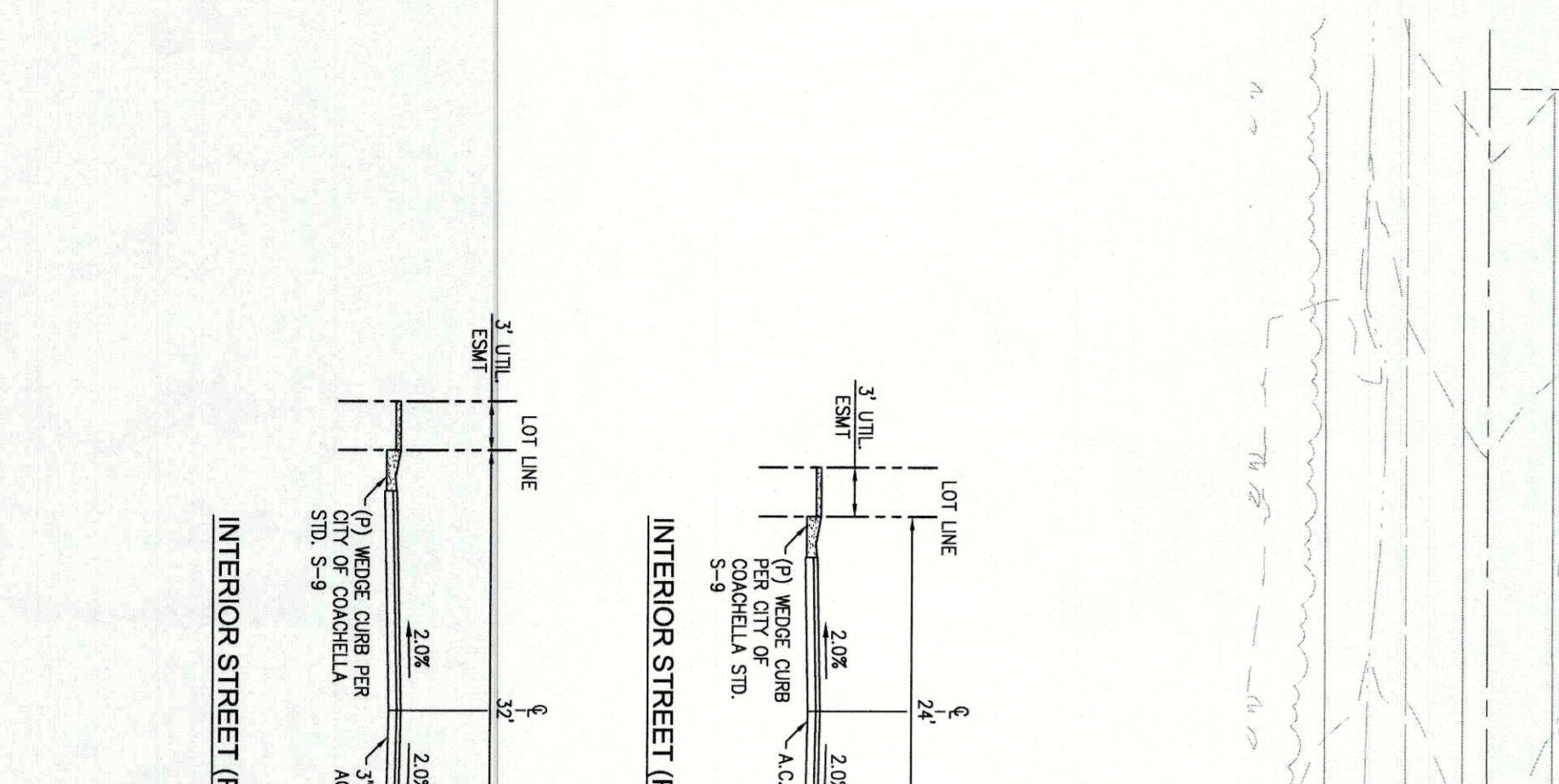
LOT INFORMATION

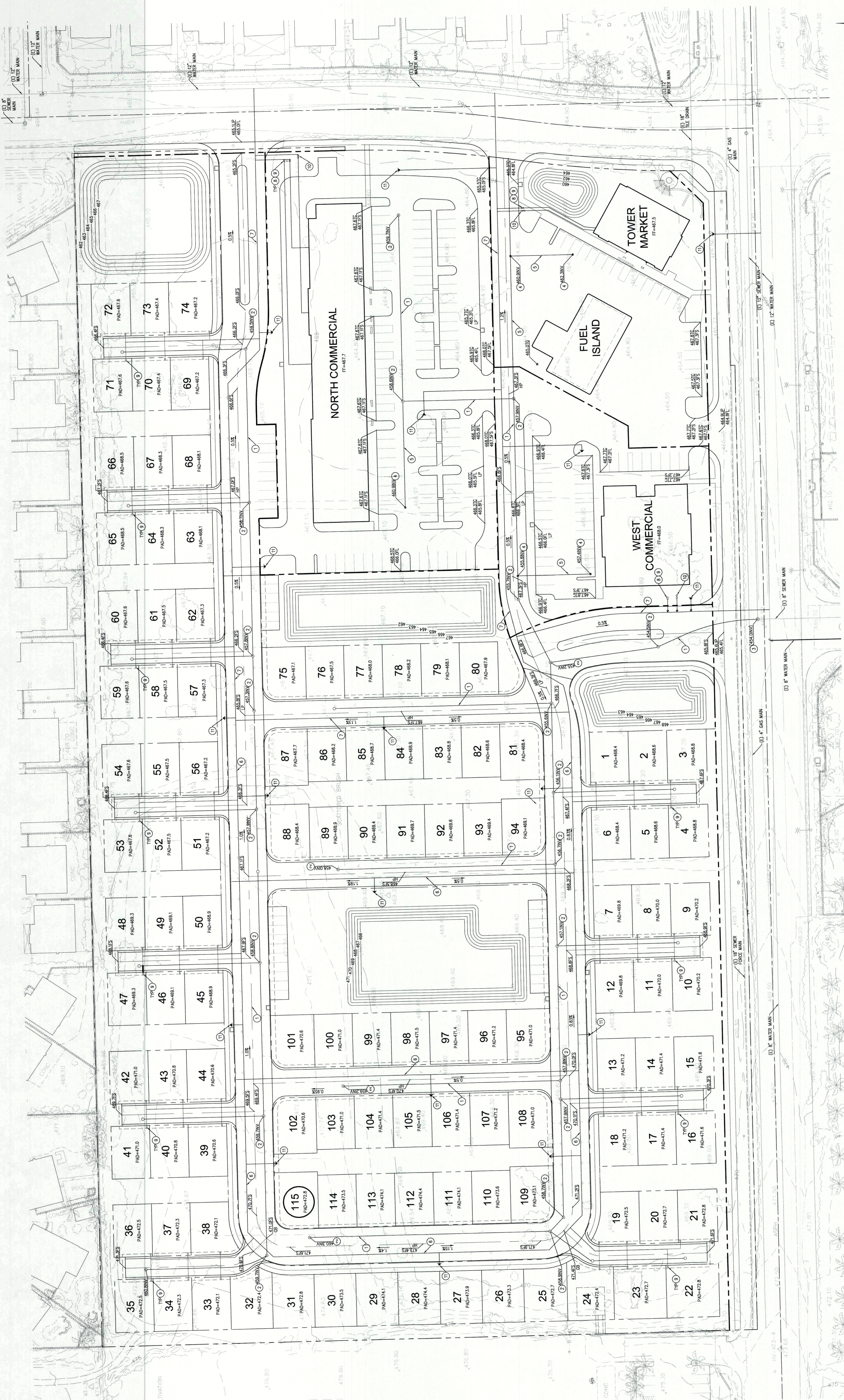
LOT #	AREA (SQ. FT.)
116	2,325
117	2,325
118	2,325
119	2,325
120	2,325
121	2,325
122	2,325
123	2,325
124	2,325
125	2,325
126	2,325
127	2,325
128	2,325
129	2,325
130	2,325
131	2,325
132	2,325
133	2,325
134	2,325
135	2,325
136	2,325
137	2,325
138	2,325
139	2,325
140	2,325
141	2,325
142	2,325
143	2,325
144	2,325
145	2,325
146	2,325
147	2,325
148	2,325
149	2,325
150	2,325
151	2,325
152	2,325
153	2,325
154	2,325
155	2,325
156	2,325
157	2,325
158	2,325
159	2,325
160	2,325
161	2,325
162	2,325
163	2,325
164	2,325
165	2,325
166	2,325
167	2,325
168	2,325
169	2,325
170	2,325
171	2,325
172	2,325
173	2,325
174	2,325
175	2,325
176	2,325
177	2,325
178	2,325
179	2,325
180	2,325
181	2,325
182	2,325
183	2,325
184	2,325
185	2,325
186	2,325
187	2,325
188	2,325
189	2,325
190	2,325
191	2,325
192	2,325
193	2,325
194	2,325
195	2,325
196	2,325
197	2,325
198	2,325
199	2,325
200	2,325



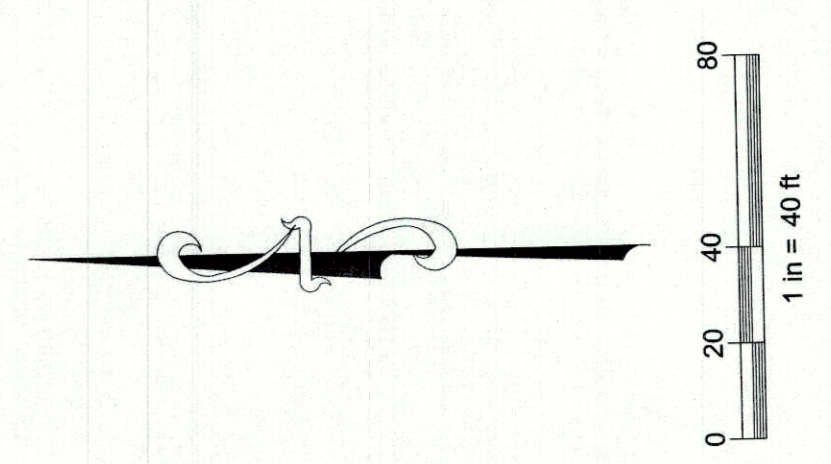
LETTERED LOT LINE DATA

LOT #	AREA (SQ. FT.)	LINE NO.	BEARING	DISTANCE
LOT A	2,327	1	N 89°53'57" E	444.46
LOT B	2,325	2	N 89°53'57" E	22.00
LOT C	2,327	3	N 89°53'57" E	22.00
LOT D	2,325	4	N 89°53'57" E	22.00
LOT E	2,327	5	N 89°53'57" E	22.00
LOT F	2,325	6	N 89°53'57" E	22.00
LOT G	2,327	7	N 89°53'57" E	22.00
LOT H	2,325	8	N 89°53'57" E	22.00
LOT I	2,327	9	N 89°53'57" E	22.00
LOT J	2,325	10	N 89°53'57" E	22.00
LOT K	2,327	11	N 89°53'57" E	22.00
LOT L	2,325	12	N 89°53'57" E	22.00
LOT M	2,327	13	N 89°53'57" E	22.00
LOT N	2,325	14	N 89°53'57" E	22.00
LOT O	2,327	15	N 89°53'57" E	22.00
LOT P	2,325	16	N 89°53'57" E	22.00
LOT Q	2,327	17	N 89°53'57" E	22.00
LOT R	2,325	18	N 89°53'57" E	22.00
LOT S	2,327	19	N 89°53'57" E	22.00
LOT T	2,325	20	N 89°53'57" E	22.00
LOT U	2,327	21	N 89°53'57" E	22.00
LOT V	2,325	22	N 89°53'57" E	22.00
LOT W	2,327	23	N 89°53'57" E	22.00
LOT X	2,325	24	N 89°53'57" E	22.00
LOT Y	2,327	25	N 89°53'57" E	22.00
LOT Z	2,325	26	N 89°53'57" E	22.00
LOT AA	2,327	27	N 89°53'57" E	22.00
LOT AB	2,325	28	N 89°53'57" E	22.00
LOT AC	2,327	29	N 89°53'57" E	22.00
LOT AD	2,325	30	N 89°53'57" E	22.00
LOT AE	2,327	31	N 89°53'57" E	22.00
LOT AF	2,325	32	N 89°53'57" E	22.00
LOT AG	2,327	33	N 89°53'57" E	22.00
LOT AH	2,325	34	N 89°53'57" E	22.00
LOT AI	2,327	35	N 89°53'57" E	22.00
LOT AJ	2,325	36	N 89°53'57" E	22.00
LOT AK	2,327	37	N 89°53'57" E	22.00
LOT AL	2,325	38	N 89°53'57" E	22.00
LOT AM	2,327	39	N 89°53'57" E	22.00
LOT AN	2,325	40	N 89°53'57" E	22.00
LOT AO	2,327	41	N 89°53'57" E	22.00
LOT AP	2,325	42	N 89°53'57" E	22.00
LOT AQ	2,327	43	N 89°53'57" E	22.00
LOT AR	2,325	44	N 89°53'57" E	22.00
LOT AS	2,327	45	N 89°53'57" E	22.00
LOT AT	2,325	46	N 89°53'57" E	22.00
LOT AU	2,327	47	N 89°53'57" E	22.00
LOT AV	2,325	48	N 89°53'57" E	22.00
LOT AW	2,327	49	N 89°53'57" E	22.00
LOT AX	2,325	50	N 89°53'57" E	22.00
LOT AY	2,327	51	N 89°53'57" E	22.00
LOT AZ	2,325	52	N 89°53'57" E	22.00
LOT BA	2,327	53	N 89°53'57" E	22.00
LOT BB	2,325	54	N 89°53'57" E	22.00
LOT BC	2,327	55	N 89°53'57" E	22.00
LOT BD	2,325	56	N 89°53'57" E	22.00
LOT BE	2,327	57	N 89°53'57" E	22.00
LOT BF	2,325	58	N 89°53'57" E	22.00
LOT BG	2,327	59	N 89°53'57" E	22.00
LOT BH	2,325	60	N 89°53'57" E	22.00
LOT BI	2,327	61	N 89°53'57" E	22.00
LOT BJ	2,325	62	N 89°53'57" E	22.00
LOT BK	2,327	63	N 89°53'57" E	22.00
LOT BL	2,325	64	N 89°53'57" E	22.00
LOT BM	2,327	65	N 89°53'57" E	22.00
LOT BN	2,325	66	N 89°53'57" E	22.00
LOT BO	2,327	67	N 89°53'57" E	22.00
LOT BP	2,325	68	N 89°53'57" E	22.00
LOT BQ	2,327	69	N 89°53'57" E	22.00
LOT BR	2,325	70	N 89°53'57" E	22.00
LOT BS	2,327	71	N 89°53'57" E	22.00
LOT BT	2,325	72	N 89°53'57" E	22.00
LOT BU	2,327	73	N 89°53'57" E	22.00
LOT BV	2,325	74	N 89°53'57" E	22.00
LOT BW	2,327	75	N 89°53'57" E	22.00
LOT BX	2,325	76	N 89°53'57" E	22.00
LOT BY	2,327	77	N 89°53'57" E	22.00
LOT BZ	2,325	78	N 89°53'57" E	22.00
LOT CA	2,327	79	N 89°53'57" E	22.00
LOT CB	2,325	80	N 89°53'57" E	22.00
LOT CC	2,327	81	N 89°53'57" E	22.00
LOT CD	2,325	82	N 89°53'57" E	22.00
LOT CE	2,327	83	N 89°53'57" E	22.00
LOT CF	2,325	84	N 89°53'57" E	22.00
LOT CG	2,327	85	N 89°53'57" E	22.00
LOT CH	2,325	86	N 89°53'57" E	22.00
LOT CI	2,327	87	N 89°53'57" E	22.00
LOT CJ	2,325	88	N 89°53'57" E	22.00
LOT CK	2,327	89	N 89°53'57" E	22.00
LOT CL	2,325	90	N 89°53'57" E	22.00
LOT CM	2,327	91	N 89°53'57" E	22.00
LOT CN	2,325	92	N 89°53'57" E	22.00
LOT CO	2,327	93	N 89°53'57" E	22.00
LOT CP	2,325	94	N 89°53'57" E	22.00
LOT CQ	2,327	95	N 89°53'57" E	22.00
LOT CR	2,325	96	N 89°53'57" E	22.00
LOT CS	2,327	97	N 89°53'57" E	22.00
LOT CT	2,325	98	N 89°53'57" E	22.00
LOT CU	2,327	99	N 89°53'57" E	22.00
LOT CV	2,325	100	N 89°53'57" E	22.00
LOT CW	2,327	101	N 89°53'57" E	22.00
LOT CX	2,325	102	N 89°53'57" E	22.00
LOT CY	2,327	103	N 89°53'57" E	22.00
LOT CZ	2,325	104	N 89°53'57" E	22.00
LOT DA	2,327	105	N 89°53'57" E	22.00
LOT DB	2,325	106	N 89°53'57" E	22.00
LOT DC	2,327	107	N 89°53'57" E	22.00
LOT DD	2,325	108	N 89°53'57" E	22.00
LOT DE	2,327	109	N 89°53'57" E	22.00
LOT DF	2,325	110	N 89°53'57" E	22.00
LOT DG	2,327	111	N 89°53'57" E	22.00
LOT DH	2,325	112	N 89°53'57" E	22.00
LOT DI	2,327	113	N 89°53'57" E	22.00
LOT DJ	2,325	114	N 89°53'57" E	22.00
LOT DK	2,327	115	N 89°53'57" E	22.00





- CONSTRUCTION NOTES**
- INSTALL 8" SDR 21 PVC SEWER MAIN PER CITY OF COACHELLA STD. D-4.
 - CONSTRUCT 48" SEWER MANHOLE PER CITY OF COACHELLA STD. D-2.
 - CONNECT TO EXISTING SEWER MANHOLE.
 - INSTALL 6" SEWER CLEANOUT PER CITY OF COACHELLA STD. D-1.
 - INSTALL 4" SDR 40 PVC SEWER MAIN PER CITY OF COACHELLA STD. D-1.
 - INSTALL 12" C-900 CLASS 200 PVC WATER MAIN PER CITY OF COACHELLA STD. W-5.
 - INSTALL 12" C-900 CLASS 200 PVC WATER MAIN PER CITY OF COACHELLA STD. W-5.
 - INSTALL REDUCED PRESSURE BACKFLOW PREVENTION DEVICE PER CITY OF COACHELLA STD. W-6.
 - INSTALL STANDARD WATER SERVICE METER PER CITY OF COACHELLA STD. W-8.
 - INSTALL FIRE DETECTOR CHECK ASSEMBLY PER CITY OF COACHELLA STD. W-10.
 - INSTALL 6" FIRE HYDRANT PER CITY OF COACHELLA STD. W-4.



**PRELIMINARY GRADING & UTILITY
IN THE COUNTY OF RIVERSIDE, CA
IN THE CITY OF COACHELLA**

APPROVED BY:

BENCH MARK

BASIS OF BEARINGS

STAMP

DESIGNED BY:

CHECKED BY:

DATE NO. DRAWN BY:

SCALE:

FILE NO.

24422 Avenida de la Carlota
Laguna Hills, CA 92653
Phone: 949-453-0111

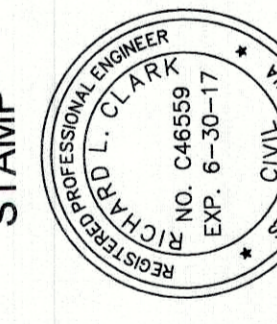
06.30.17
CWF

DESIGNED BY:
CARESSURE
CONSULTANTS, INC. P.L.L.C.

CHECKED BY:
CARESSURE
CONSULTANTS, INC. P.L.L.C.

DATE NO. DRAWN BY:

REVISIONS	DATE NO.	DRAWN BY:



CITY OF COACHELLA
PLANNING DEPARTMENT
1000 W. STATE ST.
COACHELLA, CA 92530