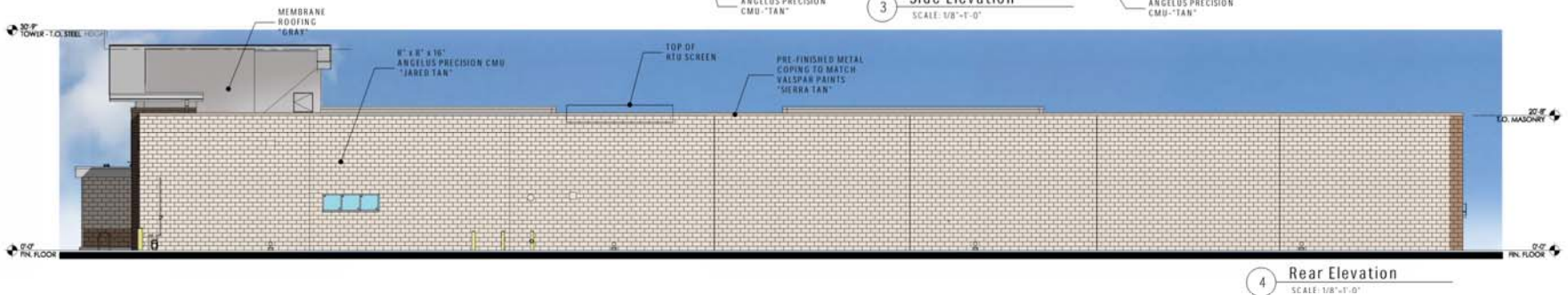
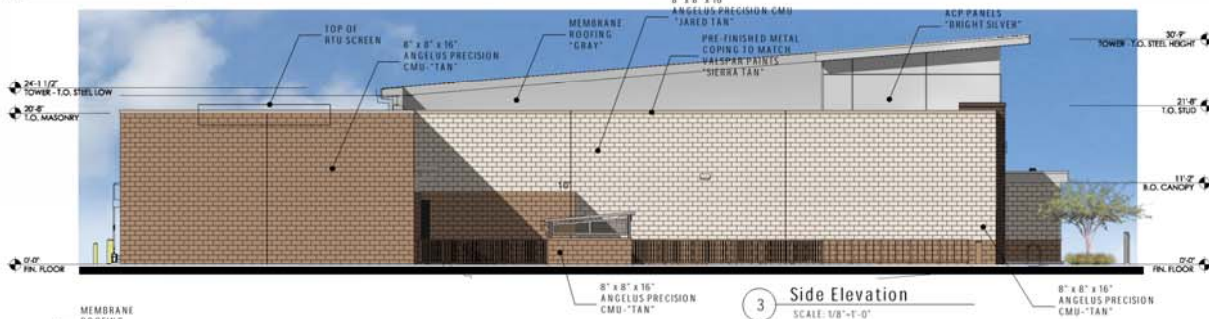


Attachment 6



Issued:	Date:

Revisions:	Date:

Project Architect/Engineer	Date:
Architect/Engineer Name	##/##/##
Project Lead	Date:
Lead Name	##/##/##
Project Designer	Date:
Designer Name	##/##/##

Seal Seal

rdc.

245 East Third Street
Long Beach, CA 90802
t 562.628.8000
rdcollaborative.com

ALDI Inc.
12661 Aldi Place
Moreno Valley, CA 92555-4703

ALDI Inc. Store #: ##
Coachella
NEC Harrison St. & Fst St.
City of Coachella, CA
Riverside County
Project Name & Location:

Conceptual Elevations	
Drawing Name:	
Date: 12.13.21	Project No. 20-197
Type: RHSDV7ER	
Drawn By: RT	CEE-1
Scale: As Noted	Drawing No.

Attachment 6

EXTERIOR FINISH SCHEDULE			
KEY	MATERIAL / MFG.	COLOR / NO.	NOTES
A1	PRE-FINISHED METAL COPING	SILVER AT HIGH ROOF AND CANOPY	SEE SPECIFICATIONS APPENDIX 'W'
A1a	PRE-FINISHED METAL COPING	SERRA TAN - AT CMU	SEE SPECIFICATIONS APPENDIX 'W'
A1b	PRE-FINISHED METAL COPING	AGED BRONZE - AT NICHPHA TOWERS	SEE SPECIFICATIONS APPENDIX 'W'
A1c	OPTI PRE-FINISHED METAL COPING	GRANITE AT PLASTER WALL	SEE SPEC FOR ADDITIONAL INFO
A1c	OPTI PRE-FINISHED METAL COPING	JINC AT STANDING SEAM METAL WALL	SEE SPEC FOR ADDITIONAL INFO
A2	8" X 8" X 1/4" PRECISION CMU BY ECHELON MASONRY	JARED TAN w/ HOLCIM "SANDBOR" MORTAR	W/ MORTAR ALT. SOLOMON "3H DEEP BROWN"
A2a	OPTI 8" X 4" X 1/4" PRECISION CMU BY ECHELON MASONRY	JARED TAN w/ HOLCIM "SANDBOR" MORTAR	W/ MORTAR ALT. SOLOMON "3H DEEP BROWN"
A3	PRE-FINISHED ALUM. SILL	BRIGHT SILVER	SEE SPEC FOR ADDITIONAL INFO
A3a	PRE-FINISHED METAL COPING	PETERSEN ALUMINUM - AGED BRONZE	SEE SPEC FOR ADDITIONAL INFO
A4	ALUMINUM STOREFRONT - FRONT SET GLAZING	ANODIZED ALUM.	SHADED WINDOWS ARE SPANDREL, REFER TO SHEET A602
A5	MEMBRANE ROOFING	GRAY	TOP OF SLOPED ROOF, CANOPY ROOF, AND BACK OF RAISED ROOF PROJECTIONS - SEE SPECIFICATIONS APPENDIX 'B'
A6	METAL SOFFIT PANELS	SOLID PANELS - BRIGHT SILVER	RE: DWG. A301-A304
A6a	METAL SOFFIT PANELS	1/2" VENTED PANELS - BRIGHT SILVER	RE: DWG. A301-A304
A7	EXTERIOR PAINT	PE-TV / CLP	RE: DWG. A602
A8	ALUMINUM STOREFRONT SYSTEM	ANODIZED ALUM.	SEE A602 AND SPECS FOR GLASS TYPE
A9	ALUMINUM COMPOSITE PANEL	BRIGHT SILVER	PROVIDE PANEL JOINTS AS SHOWN - PROVIDE ONE PIECE TIGHT FIT EXTRUDED MOLDING INSTALLATION SYSTEM WITH CENTER REVEAL TRIM BETWEEN PANELS AND J TRIM AT PANEL EDGES
A10	NICHPHA FIBER CEMENT CLADDING	VINTAGE WOOD "BARK"	CONTACT NICHPHA AT 770-854-6466 FOR ORDERING. SEE SPEC FOR TRIM REQUIREMENTS AND ADDITIONAL INFO. ALL INCLUDED TRIM (H, J, L, CORNER, ETC) TO MATCH FCP. NICHPHA PANELS SHALL EXTEND ONTO THE ROOF FOR THE FULL DEPTH OF THE BUMPOUT. SEE SHEET A-121 ROOF PLAN FOR REFERENCE.
A11	BLUD-2	PL19 / CL4	RE: DWG A603
A12	BLUD-4	CG-835 BK CHRÖMA HSE PE	RE: DWG A603
A13	GUARD RAIL TYPE "A"	GALVANIZED STEEL	RE: DWG 82A507
A14	GUARD RAIL TYPE "B"	GALVANIZED STEEL	RE: DWG 82A507
A15	CART STARTER POST	GALVANIZED	
A16	DOCK LEVELER / SEAL AND BUMPERS	LEVELER - FACTORY FINISH / SEAL AND BUMPERS - FACTORY FINISH - BLACK	
A17	MASONRY CONTROL JOINT		MAX 3/16" OC RE: DWG. A201
A18	OVERFLOW SCUPPER	FACTORY FINISH	COLOR TO MATCH ROOF COPING
A19	ARCHITECTURAL CAST STONE CAP	CGI GARY "OLD PEWEE"	SEE SPEC FOR ADDITIONAL INFORMATION
A20	ALUM TOWER SIGN	BY SIGN VENDOR	7'-11 1/8" W. x 4'-5 1/2" H. VERIFY SIGN SIZE PRIOR TO FRAMING OPENING SEE DETAIL C1A204
A21	CRB	NATURAL	RE: DWG A603 - SEE STRUCTURAL DWGS
A22	RINKY BOX	FACTORY FINISH	CONFIRM TYPE AND LOCATION WITH LOCAL FIRE MARSHAL
A23	AUTO DOOR SYSTEM & TRANSOM	ANODIZED ALUMINUM	RE: DWG A601 & A602
A25	8" X 8" PRE-FINISHED ALUM GUTTER	MATCH PRE-FINISHED METAL COPING	TERMINATE AT CONC. SPLASH BLOCK
A26	8" X 8" PRE-FINISHED ALUM DOWNSPOUT	MATCH PRE-FINISHED METAL COPING	TYPICAL AT EDGES AND BUTT JOINTS OF ACP
A27	ACP H/J TRIM / JOINT COVER		
A28	NICHPHA FIBER CEMENT PANEL BASE FLASHING	PETERSEN ALUMINUM - AGED BRONZE	SEE SPEC FOR ADDITIONAL INFO
A29	OPTI BERRIDGE MANUFACTURING CEILING PANEL	LEAD-COTE	SEE SPEC FOR ADDITIONAL INFO
A29	OPTI CEMENT FLASHER	SW7633 MODERN GRAY	SEE SPEC FOR ADDITIONAL INFO
A30	DUMPSTER ENCLOSURE		RE: DWG. A508
A31	ROOF TOP SCREENING	RE: DWG. A21	RE: DETAIL A3A401
A32	PRE-FINISHED EXTERIOR COVER VENT	MATCH PRE-FINISHED ACCESS DOOR FINISH	PROTECT SCREEN. RE: DETAIL B3A303
A33	QUARTER CART SIGN		
A34	CONCRETE SPLASHBLOCK		ROOF DRAIN TO DAYWIE AT FACE OF WALL AT +18' AFF

EXTERIOR FINISH SCHEDULE			
KEY	MATERIAL / MFG.	COLOR / NO.	NOTES
E1	EXIT DISCHARGE	FACTORY FINISH	MOUNT @ 8'-0"
E2	WALL SCIENCE	FACTORY FINISH	MOUNT @ 12'-0"
E3	FUSED DISCONNECT	FACTORY FINISH	SEE ELECTRICAL
E4	GULFET WEATHERS & C-1	FACTORY FINISH	SEE ELECTRICAL DWGS
E5	EXTERIOR WALL PACK	FACTORY FINISH	MAIN DOORS - MOUNT @ 9'-0" A.F.F.; LOADING DOCK - MOUNT @ 12'-0" A.F.F.
E6	EXTERIOR DUPLEX RECEPTACLE	FACTORY FINISH	MOUNT @ 14" A.F.F. IN 4' SQUARE - 4-BOX
E7	GENERATOR QUICK CONNECT	FACTORY FINISH	SEE ELECTRICAL DWGS
E8	AIR SAMPLING CONTROL DETECTION PANEL	FACTORY FINISH	SEE ELECTRICAL DWGS
F1	FIRE DEPARTMENT CONNECTION	FACTORY FINISH	SEE FIRE PROTECTION DWGS
F2	MOTOR GOING	FACTORY FINISH	SEE FIRE PROTECTION DWGS
F7	NO. 800 IBE	FACTORY FINISH	SEE PLUMBING DWGS AND FLOOR PLAN
F2	RPT RECHARGE	FACTORY FINISH	SEE PLUMBING DWGS
F3	GAS METER	FACTORY FINISH	SEE PLUMBING DWGS
GLAZING KEY			RE: DWG A602
ALIGN KEY			A-ALIGN NICHPHA PANEL JOINTS AND WINDOW MULLIONS B-ALIGN ALUMINUM COMPOSITE PANEL JOINTS AND WINDOW MULLIONS C-ALIGN NICHPHA PANEL JOINTS, ALUMINUM COMPOSITE PANEL JOINTS & WINDOW MULLIONS

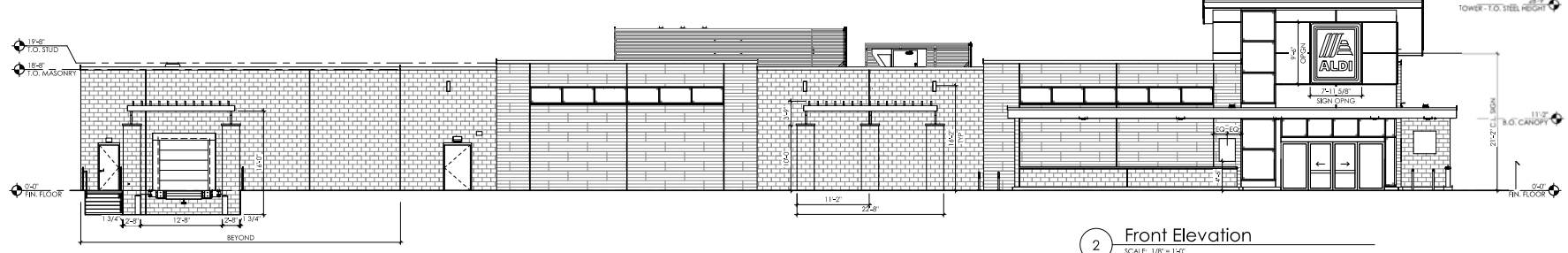
Issued:	Date:
Planning Submittal	09/29/21

Revisions:	Date:

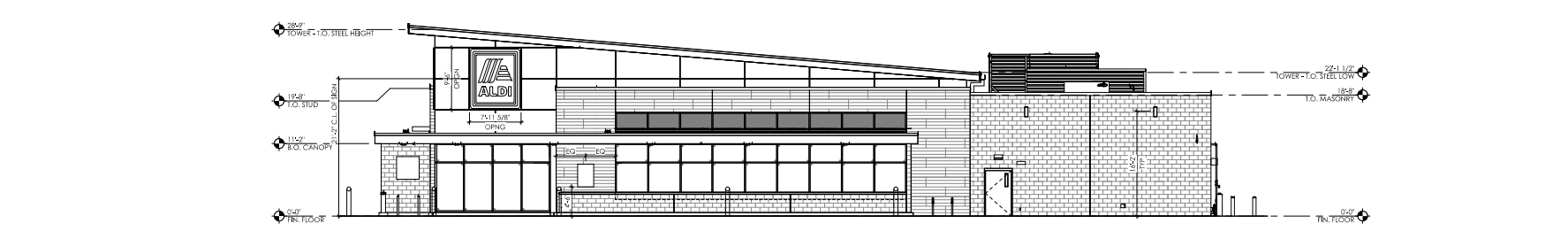
Project Architect/Engineer	Date:
Architect/Engineer Name	##/##/##
Project Lead	Date:
Lead Name	##/##/##
Project Designer	Date:
Designer Name	##/##/##

Seal	Seal
------	------

245 East Third Street
Long Beach, Ca 90802
t 562.628.8000
rdcollaborative.com



2 Front Elevation
SCALE: 1/8" = 1'-0"



1 Side Elevation
SCALE: 1/8" = 1'-0"

ALDI Inc. Store #: ##
Coachella
NEC Harrison St. & First St.
City of Coachella, CA
Riverside County
Project Name & Location:

Conceptual Exterior Elevations	Project No.
Drawing Name:	20-197
Date:	
Type: RHSDV7ER	
Drawn By: SF	A-201
Scale: As Noted	Drawing No.

PLOTTED: 9/29/2021 1:48:39 PM

Attachment 6

KEY	MATERIAL / MFG.	COLOR / NO.	EXTERIOR FINISH SCHEDULE	NOTES
A1	PRE-FINISHED METAL CORING	SILVER AT HIGH ROOF AND CANOPY	SEE SPECIFICATIONS APPENDIX 'W'	
A1a	PRE-FINISHED METAL CORING	SERRA TAN - AT CMU	SEE SPECIFICATIONS APPENDIX 'W'	
A1b	PRE-FINISHED METAL CORING	AGED BRONZE - AT NICHPHA TOWERS	SEE SPECIFICATIONS APPENDIX 'W'	
A1c	OPT1 PRE-FINISHED METAL CORING	GRANITE AT PLASTER WALL	SEE SPEC FOR ADDITIONAL INFO	
A1c	OPT1 PRE-FINISHED METAL CORING	3/8" C AT STANDING SEAM METAL WALL	SEE SPEC FOR ADDITIONAL INFO	
A2	8" X 8" X 16" PRECISION CMU BY ECHELON MASONRY	JARED TAN w/ HOLCIM "LANDROBE" MORTAR		
A2a	OPT1 8" X 4" X 16" PRECISION CMU BY ECHELON MASONRY	JARED TAN w/ HOLCIM "LANDROBE" MORTAR		
A3	PRE-FINISHED ALUM. SILL	BRIGHT SILVER	SEE SPEC FOR ADDITIONAL INFO	
A3a	PRE-FINISHED METAL CORING	PETERSEN ALUMINUM - AGED BRONZE	SEE SPEC FOR ADDITIONAL INFO	
A4	ALUMINUM STOREFRONT - FRONT SET GLAZING	ANODIZED ALUM.	SHADED WINDOWS ARE SPANDREL, REFER TO SHEET A602	
A5	MEMBRANE ROOFING	GRAY	TOP OF SLOPED ROOF, CANOPY ROOF, AND BACK OF RAISED ROOF PROJECTIONS - SEE SPECIFICATIONS APPENDIX 'B'	
A6	METAL SOFFIT PANELS	SOLID PANELS - BRIGHT SILVER	RE: DWG. A301-A304	
A6a	METAL SOFFIT PANELS	1/2" VENTED PANELS - BRIGHT SILVER	RE: DWG. A301-A304	
A7	EXTERIOR PAINT	PE-TV CLP	RE: DWG. A602	
A8	ALUMINUM STOREFRONT SYSTEM	ANODIZED ALUM.	SEE A602 AND SPECS FOR GLASS TYPE	
A9	ALUMINUM COMPOSITE PANEL	BRIGHT SILVER	PROVIDE PANEL JOINTS AS SHOWN - PROVIDE ONE PIECE TIGHT FIT EXTRUDED MOLDING INSTALLATION SYSTEM WITH CENTER REVEAL TRIM BETWEEN PANELS AND J TRIM AT PANEL EDGES	
A10	NICHPHA FIBER CEMENT CLADDING	VINTAGE WOOD "BARK"	CONTACT NICHPHA AT 770.650.4466 FOR ORDERING. SEE SPEC FOR TRIM REQUIREMENTS AND ADDITIONAL INFO. ALL INCLUDED TRIM (H, J, L, CORNER, ETC) TO MATCH FCP. NICHPHA PANELS SHALL EXTEND ONTO THE ROOF FOR THE FULL DEPTH OF THE BUMPOUT. SEE SHEET A-121 ROOF PLAN FOR REFERENCE.	
A11	BLUD-2	PL19 / CL4	RE: DWG A603	
A12	BLUD-4	CG-815 BK CHR OMA HSE PE	RE: DWG A603	
A13	GUARD RAIL TYPE "A"	GALVANIZED STEEL	RE: DWG 82AS07	
A14	GUARD RAIL TYPE "B"	GALVANIZED STEEL	RE: DWG 82AS07	
A15	CART STARTER POST	GALVANIZED		
A16	DOCK LEVELER / SEAL AND BUMPERS	LEVELER - FACTORY FINISH / SEAL AND BUMPERS - FACTORY FINISH - BLACK		
A17	MASONRY CONTROL JOINT		MAX 3/8" OC RE: DWG. A201	
A18	OVERFLOW SCUPPER	FACTORY FINISH	COLOR TO MATCH ROOF COPING	
A19	ARCHITECTURAL CAST STONE CAP	CGI GYRO "OLD PEWEE"	SEE SPEC FOR ADDITIONAL INFORMATION	
A20	ALB TOWER SIGN	BY SIGN VENDOR	7'-11 1/8" W. X 4'-5 1/2" H. VERIFY SIGN SIZE PRIOR TO FRAMING OPENING SEE DETAIL C1A204	
A21	CRB	NATURAL	RE: DWG A603 - SEE STRUCTURAL DWGS	
A22	INDY BOX	FACTORY FINISH	CONFIRM TYPE AND LOCATION WITH LOCAL FIRE MARSHAL	
A23	AUTO DOOR SYSTEM & TRANSOM	ANODIZED ALUMINUM	RE: DWG A601 & A602	
A23	8" X 8" PRE-FINISHED ALUM GUTTER	MATCH PRE-FINISHED METAL COPING		
A24	8" X 8" PRE-FINISHED ALUM DOWNSPOUT	MATCH PRE-FINISHED METAL COPING	TERMINATE AT CONC. SPLASH BLOCK	
A27	ACP H/J TRIM / JOINT COVER		TYPICAL AT EDGES AND BUTT JOINTS OF ACP	
A28	NICHPHA FIBER CEMENT PANEL BASE FLASHING	PETERSEN ALUMINUM - AGED BRONZE		
A29	OPT1 BERRIDGE MANUFACTURING CE-LOCK PANEL	LEAS-COTE	SEE SPEC FOR ADDITIONAL INFO	
A29	OPT1 CEMENT FLASER	SW7633 MODERN GRAY	SEE SPEC FOR ADDITIONAL INFO	
A30	DUMPSITE ENCLOSURE	RE: DWG. A121	RE: DWG. A508	
A31	ROOF TOP SCREENING	RE: DWG. A31A01	RE: DETAIL A31A01	
A32	PRE-FINISHED EXTERIOR COVER VENT	MATCH PRE-FINISHED ACCESS DOOR FINISH	PROVIDE INSPECT SCREEN. RE: DETAIL B3A303	
A33	QUARTER CART SIGN			
A34	CONCRETE SPLASHBLOCK		ROOF DRAIN TO DAYWIE AT FACE OF WALL AT +18' AFF.	

KEY	MATERIAL / MFG.	COLOR / NO.	EXTERIOR FINISH SCHEDULE
E1	EXIT DISCHARGE	FACTORY FINISH	MOUNT @ 8'-0"
E2	WALL SCORING	FACTORY FINISH	MOUNT @ 12'-0"
E3	FUSED DISCONNECT	FACTORY FINISH	SEE ELECTRICAL
E4	GULF METERS & C-1	FACTORY FINISH	SEE ELECTRICAL DWGS
E5	EXTERIOR WALL PACK	FACTORY FINISH	MAIN DOORS - MOUNT @ 9'-0" A.F.F.; LOADING DOCK - MOUNT @ 12'-0" A.F.F.
E6	EXTERIOR DUPLEX RECEPTACLE	FACTORY FINISH	MOUNT @ 14" A.F.F. IN 4' SQUARE - 4 BOX
E7	GENERATOR QUICK CONNECT	FACTORY FINISH	SEE ELECTRICAL DWGS
E8	AIR SAMPLING CONTROL DETECTION PANEL	FACTORY FINISH	SEE ELECTRICAL DWGS
F1	IRE DEPARTMENT CONNECTION	FACTORY FINISH	SEE FIRE PROTECTION DWGS
F2	MOTOR GOING	FACTORY FINISH	SEE FIRE PROTECTION DWGS
F7	HOSE BIB	FACTORY FINISH	SEE PLUMBING DWGS AND FLOOR PLAN
P2	RPT RECHARGE	FACTORY FINISH	SEE PLUMBING DWGS
P3	GAS METER	FACTORY FINISH	SEE PLUMBING DWGS
	GLAZING KEY		RE: DWG A602
	ALIGN KEY		A-ALIGN NICHPHA PANEL JOINTS AND WINDOW MULLIONS B-ALIGN ALUMINUM COMPOSITE PANEL JOINTS AND WINDOW MULLIONS C-ALIGN NICHPHA PANEL JOINTS, ALUMINUM COMPOSITE PANEL JOINTS & WINDOW MULLIONS

Issued:	Date:
Planning Submittal	09/29/21

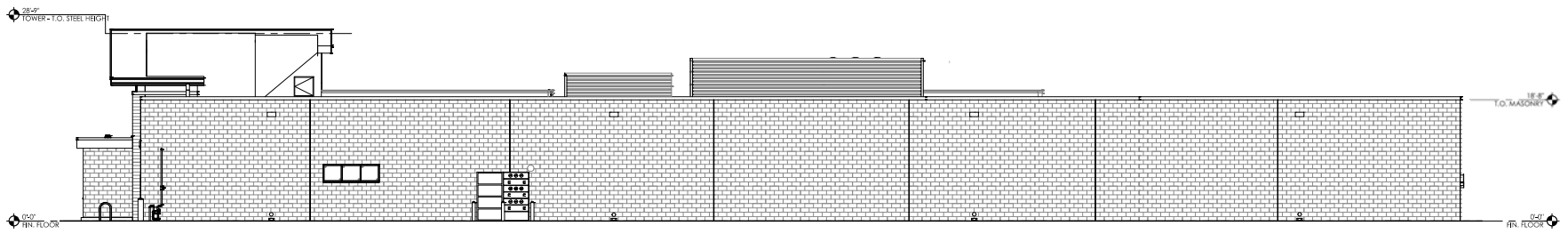
Revisions:	Date:

Seal	Seal
------	------

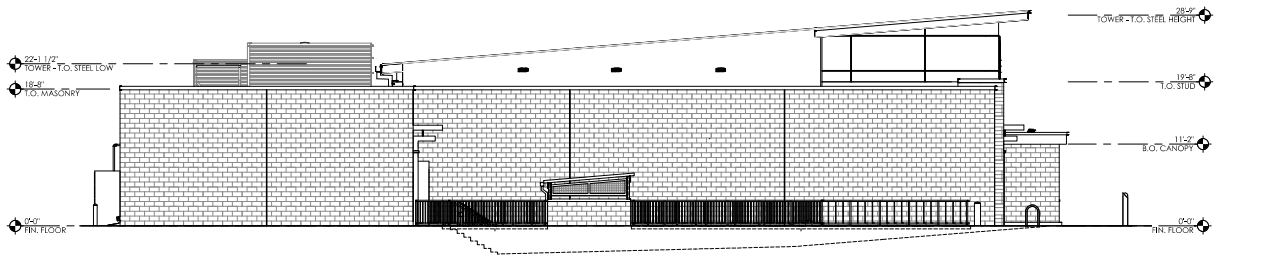
Project Architect/Engineer	Date:
Architect/Engineer Name	##/##/##

Project Lead	Date:
Lead Name	##/##/##

Project Designer	Date:
Designer Name	##/##/##



4 Rear Elevation
SCALE: 1/8" = 1'-0"



3 Side Elevation
SCALE: 1/8" = 1'-0"

rdc.

245 East Third Street
Long Beach, Ca 90802
t 562.628.8000
rdcollaborative.com



ALDI Inc. Store #: ##
Coachella
NEC Harrison St. & First St.
City of Coachella, CA
Riverside County
Project Name & Location:

Conceptual Exterior Elevations
Drawing Name:

Date: 08/14/20 Project No.

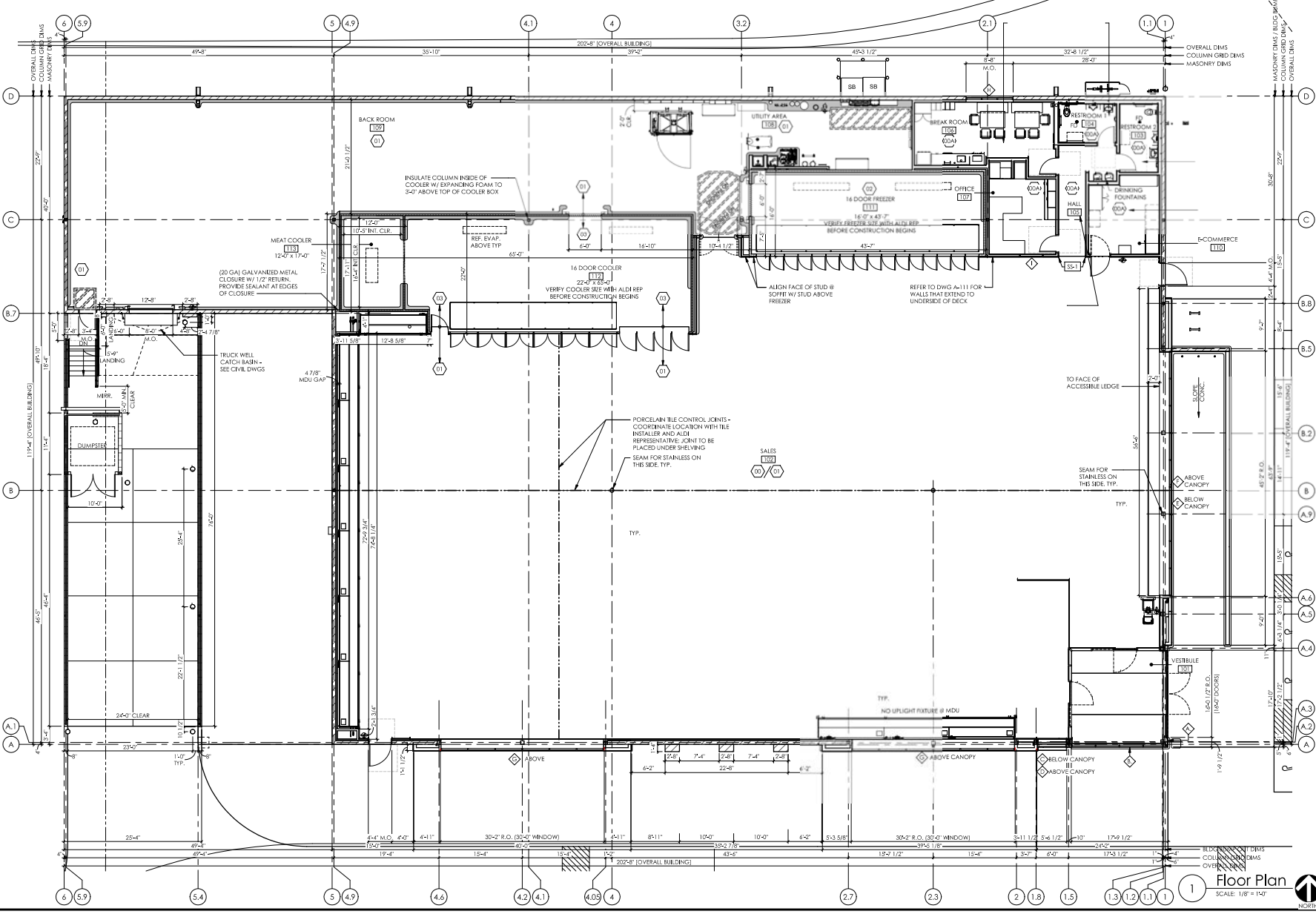
Type: RHSDV7ER 20-197

Drawn By: A-202

Scale: As Noted Drawing No.

NOTES:
 1. SEE SHEET A-403 FOR COLOR AND FINISH MATERIAL SCHEDULES.
 2. SEE SHEET A-403 FOR INTERIOR METAL STUD INFORMATION.
 3. ALL PARTITION DIMENSIONS ARE TO FACE OF STUD UNLESS NOTED OTHERWISE (E.G. C5.84).
 4. PROVIDE BLOCKING AS NEEDED FOR ALL WALL MOUNTED ITEMS.
 5. SLAT STEEL IS REQUIRED AT MECHANICAL FIXTURES COORDINATE LOCATION WITH ALDI REPRESENTATIVE.
 6. REFER TO SHEET A-402 FOR WINDOW / GLAZING DETAILS.

FLOOR FINISH SCHEDULE	
KEY	DESCRIPTION
00	2.5" THICK SET TILE SYSTEM - SUPPLIED AND INSTALLED BY OWNER
01	3/4" THIN SET TILE - FURNISHED BY OWNER AND INSTALLED BY OWNER
02	CONCRETE SLAB - SMOOTH FINISH
03	CONCRETE SLAB - FREEZEER - SEALED MEDIUM BROOM FINISH
04	CONCRETE SLAB (COOLER) - SEALED SMOOTH FINISH



Issued:	Date:
Planning Submitted	09/29/21

Revisions:	Date:

THESE DRAWINGS ARE PROTECTIVE AND SHALL NOT BE USED FOR ANY OTHER PROJECT OR FOR REUSE. THE ARCHITECT OR LAND SURVEYOR IS NOT RESPONSIBLE FOR ANY CHANGES OR OMISSIONS TO THESE DRAWINGS MADE BY ANY OTHER PARTY AFTER THEY HAVE BEEN ISSUED BY THE ARCHITECT OR LAND SURVEYOR. THE ARCHITECT OR LAND SURVEYOR SHALL NOT BE HELD RESPONSIBLE FOR ANY DAMAGE, LOSS, OR INJURY TO PERSONS OR PROPERTY ARISING OUT OF THE USE OF THESE DRAWINGS IN ANY MANNER. THE ARCHITECT OR LAND SURVEYOR SHALL NOT BE HELD RESPONSIBLE FOR ANY OMISSIONS TO THESE DRAWINGS MADE BY ANY OTHER PARTY AFTER THEY HAVE BEEN ISSUED BY THE ARCHITECT OR LAND SURVEYOR.

Project Architect/Engineer	Date:
Project Lead	Date:
Project Designer	Date:

Copyright © 2020
 It is a violation of law for any person or business to act in the capacity of an architect or engineer without being properly licensed. The use of these drawings for any other project or for any other purpose without the written consent of the architect or engineer is strictly prohibited. The architect or engineer shall not be held responsible for any damage, loss, or injury to persons or property arising out of the use of these drawings in any manner. The architect or engineer shall not be held responsible for any omissions to these drawings made by any other party after they have been issued by the architect or engineer.

rdc.
 245 East Third Street
 Long Beach, CA 90802
 t 562.628.8000
 rdcolaborative.com



ALDI Inc. Store #: ##
 Coachella
 NEC Harrison St. & First St.
 City of Coachella, CA
 Riverside County
 Project Name & Location:

Floor Plan

Drawing Name:

Date:	Project No.
	20-197

Type:	Drawn By:	Scale:	Drawing No.
RHSDV7ER	SF	As Noted	A-101

Floor Plan
 SCALE: 1/8" = 1'-0"

Attachment 6



NICHIHA FIBER CEMENT PANELS
"BARK"
VINTAGE WOOD COLLECTION



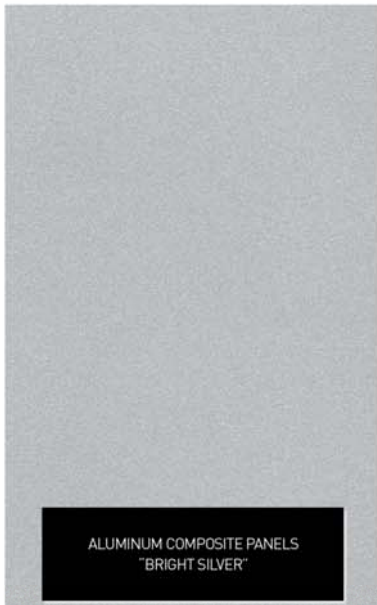
SPANDREL GLASS
GLASS COATINGS & CONCEPTS, LLC
SX3527E808 "CHARCOAL"



CONCRETE MASONRY UNITS
TO MATCH ANGELUS BLOCK
QUIKBRICK "JARED TAN"



EXTERIOR DOORS AND FRAMES TO MATCH
SHERWIN WILLIAMS PAINTS
SW 6089 "GROUNDED"



ALUMINUM COMPOSITE PANELS
"BRIGHT SILVER"



METAL COPING
PAINT TO MATCH VALSPAR PAINTS
"AGED BRONZE"



METAL COPING
PAINT TO MATCH VALSPAR PAINTS
"SIERRA TAN"

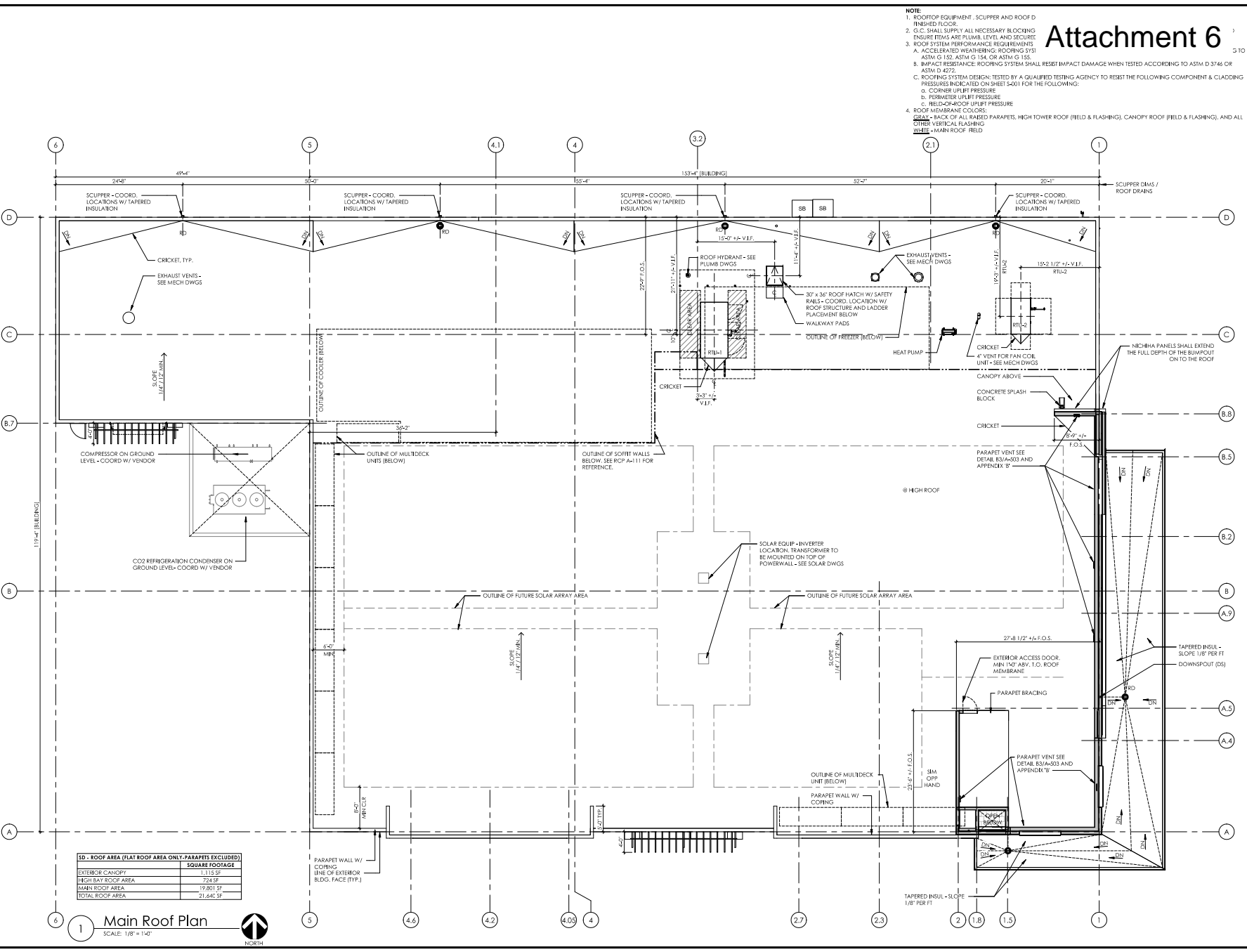
MEMBRANE ROOFING
SIKA ROOFING
"STANDARD GRAY"



ALDI MARKET
CA Prototype

Attachment 6

- NOTE:**
1. ROOFTOP EQUIPMENT, SCUPPER AND ROOF FINISHED FLOOR.
 2. G.C. SHALL SUPPLY ALL NECESSARY BLOCKING INSURE FEWS ARE PLUS 1/8" LEVEL AND SECURE.
 3. ROOF SYSTEM PERFORMANCE REQUIREMENTS
 4. ACCELERATED WEATHERING, ROOFING SYS! ASTM C 130, ASTM C 134, OR ASTM C 135.
 5. IMPACT RESISTANCE, ROOFING SYSTEM SHALL RESIST IMPACT DAMAGE WHEN TESTED ACCORDING TO ASTM D 3746 OR ASTM D 4272.
 6. ROOFING SYSTEM DESIGN, TESTED BY A QUALIFIED TESTING AGENCY TO RESIST THE FOLLOWING COMPONENT & CLADDING PRESSURES INDICATED ON SHEET S-001 FOR THE FOLLOWING:
 - a. CORNER UPLIFT PRESSURE
 - b. PERIMETER UPLIFT PRESSURE
 - c. RELEACH-ROOF UPLIFT PRESSURE
 7. ROOF MEMBRANE COLORS:
 - a. GRAY - BACK OF ALL WAIRED PARAPETS, HIGH TOWER ROOF (FIELD & FLASHING), CANOPY ROOF (FIELD & FLASHING), AND ALL OTHER VERTICAL FLASHING.
 - b. WHITE - MAIN ROOF FIELD.



SD - ROOF AREA (FLAT ROOF AREA ONLY, PARAPETS EXCLUDED)	
	SQUARE FOOTAGE
EXTERIOR CANOPY	1,113 SF
HIGHWAY ROOF AREA	724 SF
MAIN ROOF AREA	19,801 SF
TOTAL ROOF AREA	21,646 SF

Main Roof Plan
SCALE: 1/8" = 1'-0"
NORTH

Issued:	Date:
Planning/Submitted	09/29/21

Project Architect/Engineer	Date:
Architect/Engineer Name	##/##/##
Project Lead	Date:
Lead Name	##/##/##
Project Designer	Date:
Designer Name	/

Copyright © 2020
 Drawing Allowance
 It is a violation of law for any person, after affixing under the direction of a Licensed Architect, Professional Engineer, Landscape Architect, or Land Surveyor to alter any item on this document in any way. Any person who does this document is required to follow the offer in or not and/or to add the notation "Altered by [Signature] by his or her signature and the specific description of the alteration or revision.
DO NOT SCALE PLANS
 Copying, Printing, Reproducing, or otherwise using this drawing without the prior written permission of the Architect, Engineer, or Land Surveyor is strictly prohibited. This drawing may be reproduced for informational purposes only. It is not to be used for construction or other purposes without the prior written permission of the Architect, Engineer, or Land Surveyor.

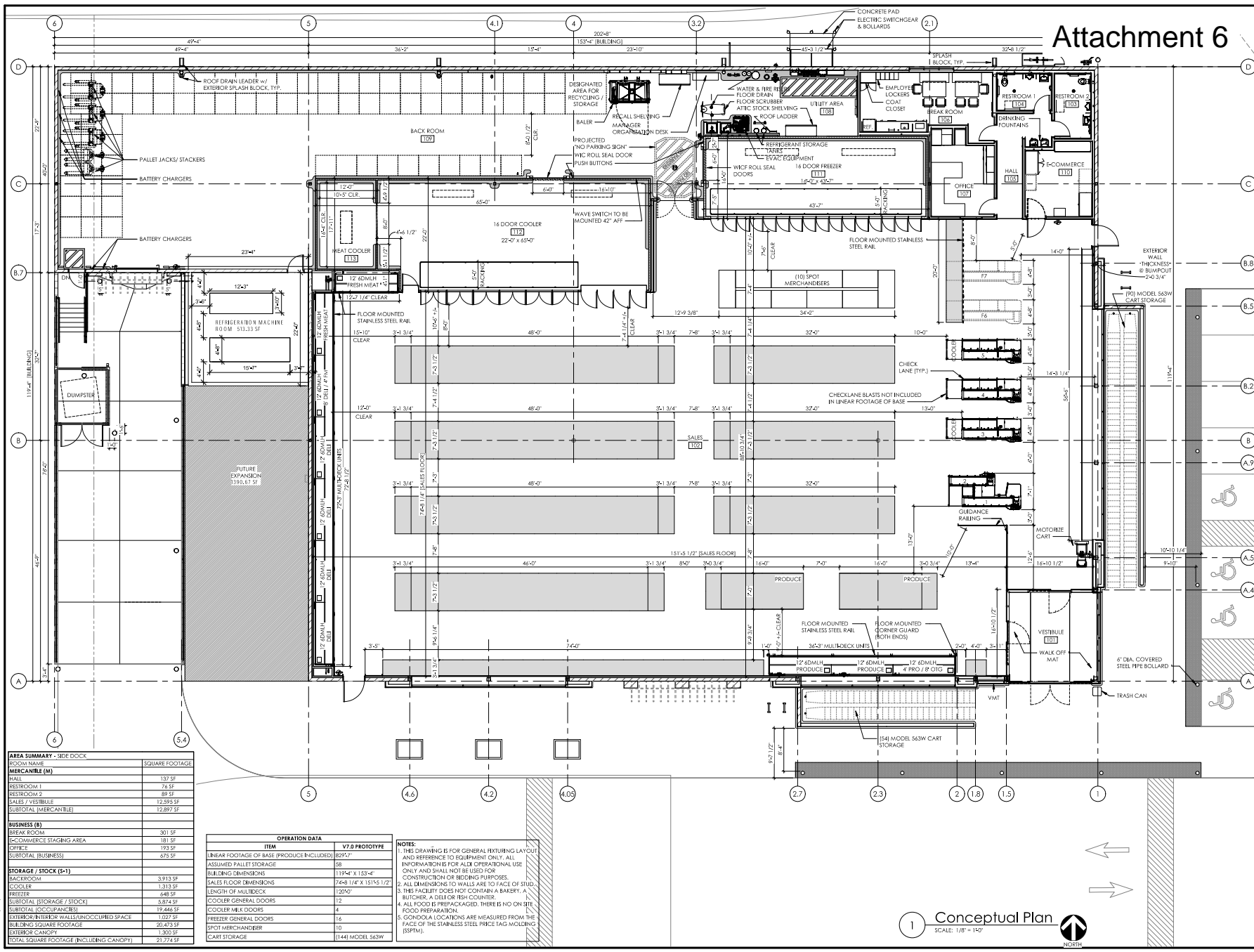
rdc.
 245 East Third Street
 Long Beach, Ca 90802
 t 562.628.8000
 rdcollaborative.com

ALDI Inc.
 12661 Alpl Place
 Moreno Valley, CA 92555-4703

ALDI Inc. Store #: ##
Coachella
 NEC Harrison St. & First St.
 City of Coachella, CA.
 Riverside County
 Project Name & Location:

Drawing Name:	Project No.
Date: 08/14/20	20-197
Type: RHSDV7ER	
Drawn By: SF	A-121
Scale: As Noted	Drawing No.

Attachment 6



AREA SUMMARY - SIDE DOCK

ROOM NAME	SQUARE FOOTAGE
MERCANTILE (M)	
HALL	137 SF
BESTROOM 1	76 SF
BESTROOM 2	89 SF
SALES VESTIBULE	12,255 SF
SUBTOTAL (MERCANTILE)	12,897 SF
BUSINESS (B)	
BREAK ROOM	301 SF
E-COMMERCE STAGING AREA	181 SF
OFFICE	193 SF
SUBTOTAL (BUSINESS)	675 SF
STORAGE / STOCK (S+T)	
BACK ROOM	3,913 SF
COOLER	1,313 SF
FREEZER	648 SF
SUBTOTAL (STORAGE / STOCK)	5,874 SF
SUBTOTAL (OCCUPANCIES)	19,446 SF
EXTERIOR/INTERIOR WALLS/UNOCCUPIED SPACE	1,027 SF
BUILDING SQUARE FOOTAGE	20,473 SF
EXTERIOR CANOPY	1,300 SF
TOTAL SQUARE FOOTAGE (INCLUDING CANOPY)	21,774 SF

ITEM	VT 0 PROTOTYPE
LINEAR FOOTAGE OF BASE (PRODUCE INCLUDED)	829'-2"
ASSUMED PALLET STORAGE	58
BUILDING DIMENSIONS	119'-4" X 153'-4"
SALES FLOOR DIMENSIONS	72'-6" 1/4" X 153'-5" 1/2"
LENGTH OF MULTIBECK	120'-0"
COOLER GENERAL DOORS	12
COOLER MILK DOORS	4
FREEZER GENERAL DOORS	16
FREEZER MILK DOORS	10
CART STORAGE	(134) MODEL 563W

- NOTES:**
1. THIS DRAWING IS FOR GENERAL FIXTURE LAYOUT AND REFERENCE TO EQUIPMENT ONLY. ALL INFORMATION IS FOR ALDI OPERATIONAL USE ONLY AND SHALL NOT BE USED FOR CONSTRUCTION OR BIDDING PURPOSES.
 2. ALL DIMENSIONS TO WALLS ARE TO FACE OF STUD.
 3. THIS FACILITY DOES NOT CONTAIN A BAKERY, A BUTCHER, A DELI OR FISH COUNTER.
 4. ALL FOOD IS PREPACKAGED. THERE IS NO ON-SITE FOOD PREPARATION.
 5. GONDOLA LOCATIONS ARE MEASURED FROM THE FACE OF THE STAINLESS STEEL PRICE TAG MOLDING (SSFM).

Issued: Planning Submittal Date: 09/29/21

Revisions: _____ Date: _____

Project Architect/Engineer: _____ Date: _____

Project Lead: _____ Date: _____

Project Designer: _____ Date: _____



245 East Third Street
Long Beach, CA 90802
t 562.628.8000
rdcollaborative.com



ALDI Inc. Store #: ##
Coachella
NEC Harrison St. & First St.
City of Coachella, CA
Riverside County
Project Name & Location:

Drawing Name: Conceptual Fixture Plan

Date: 12.13.21	Project No. 20-197
Type: RHSDV7ER	Drawn By: SF
Scale: As Noted	Drawing No. CFP-1

1 Conceptual Plan
SCALE: 1/8" = 1'-0"
NORTH