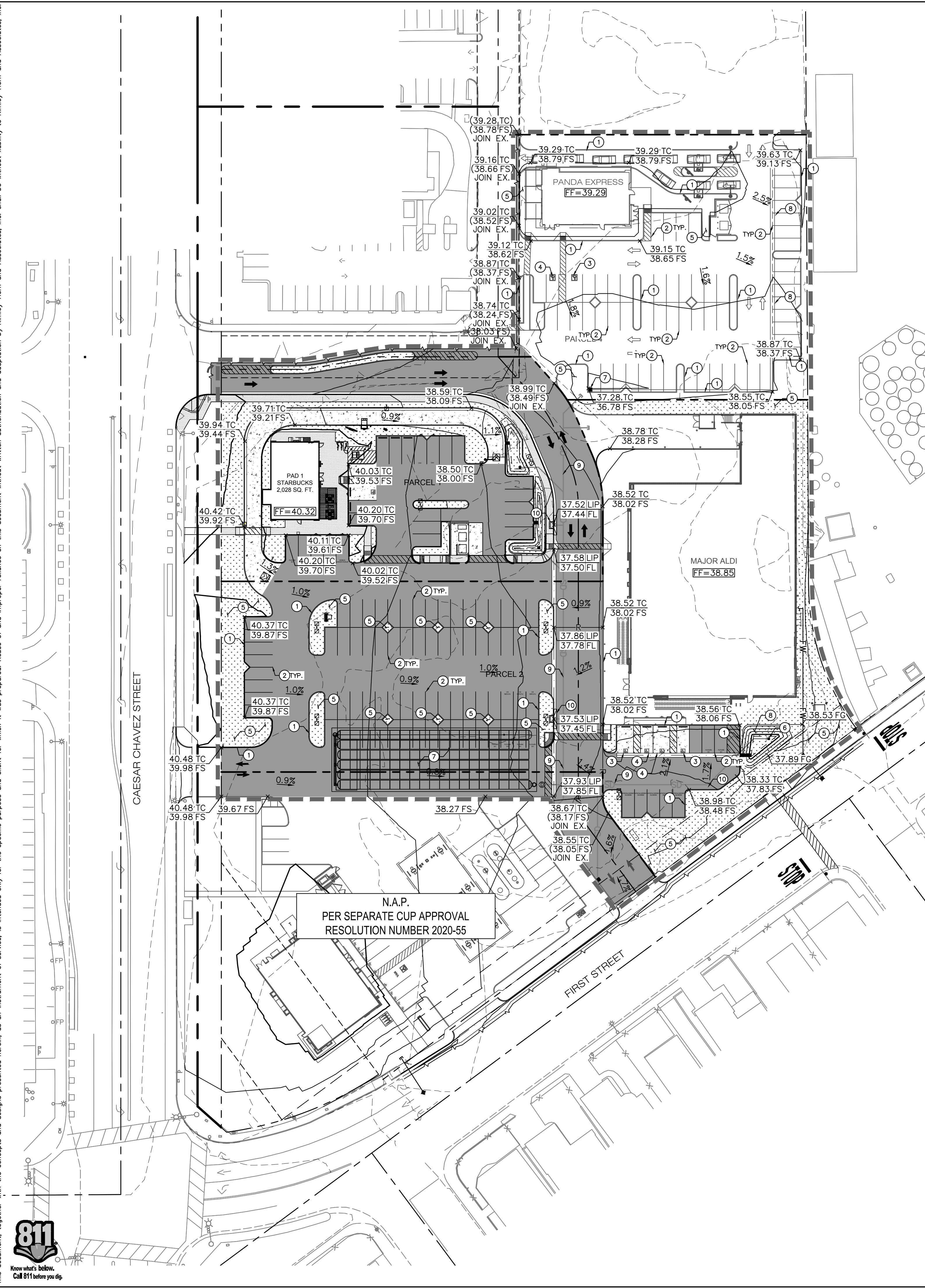


Attachment 7

Plotted By: Smith, Hannah. Sheet Set: Rto. Layout: PRELIMINARY UTILITY PLAN. October 27, 2021. 03:38:46pm. K:\ORA_LOEV\194256001 - Fountainhead Coachella\GADD_Exhibits\ALDI_Panda_Entitlements\Preliminary Grading Plan_ALDI_Panda_2.dwg
 This document, together with the concepts and designs presented herein, is intended only for the specific purpose and client for which it was prepared. Reuse of and improper reliance on this document without written authorization and adaptation by Kimley-Horn and Associates, Inc. shall be without liability to Kimley-Horn and Associates, Inc.



LEGEND

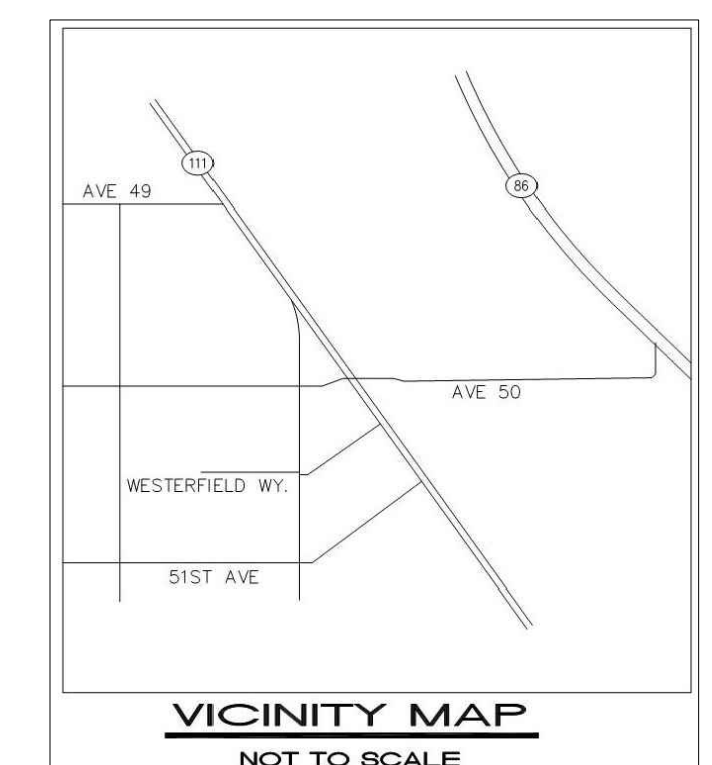
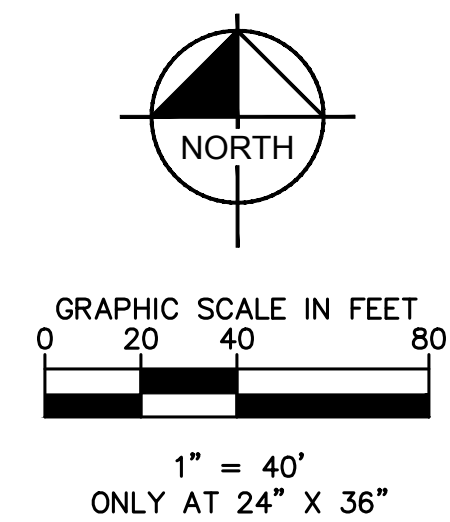
- CENTER LINE
- PROPERTY LINE
- EASEMENT LINE
- CIVIL LIMIT OF WORK LINE
- GRADE BREAK LINE
- RIDGE LINE
- FLOW LINE
- PROPOSED SPOT GRADE
- EXISTING SPOT GRADE
- PROPOSED FLOW (DIRECTION AND SLOPE)
- LANDSCAPE/PLANTER AREA
- SIDEWALK CONCRETE PAVEMENT
- ASPHALT PAVEMENT
- TRUNCATED DOMES

SITE CONSTRUCTION NOTES

- 1 CONSTRUCT CONCRETE CURB./CURB AND GUTTER
- 2 INSTALL 90° PARKING STALL
- 3 INSTALL VAN ACCESSIBLE PARKING STALL
- 4 INSTALL ACCESSIBLE CURB RAMP
- 5 LANDSCAPE/PLANTER AREA. REFER TO LANDSCAPE PLANS FOR MORE INFORMATION.
- 6 18" OVERFLOW CATCH BASIN
- 7 PROPOSED STORM DRAIN TO INFILTRATION SYSTEM
- 8 PROPOSED ABOVE GROUND INFILTRATION BASIN
- 9 PROPOSED STORM DRAIN LINE
- 10 CONCRETE CURB INLET CATCH BASIN

NOTE

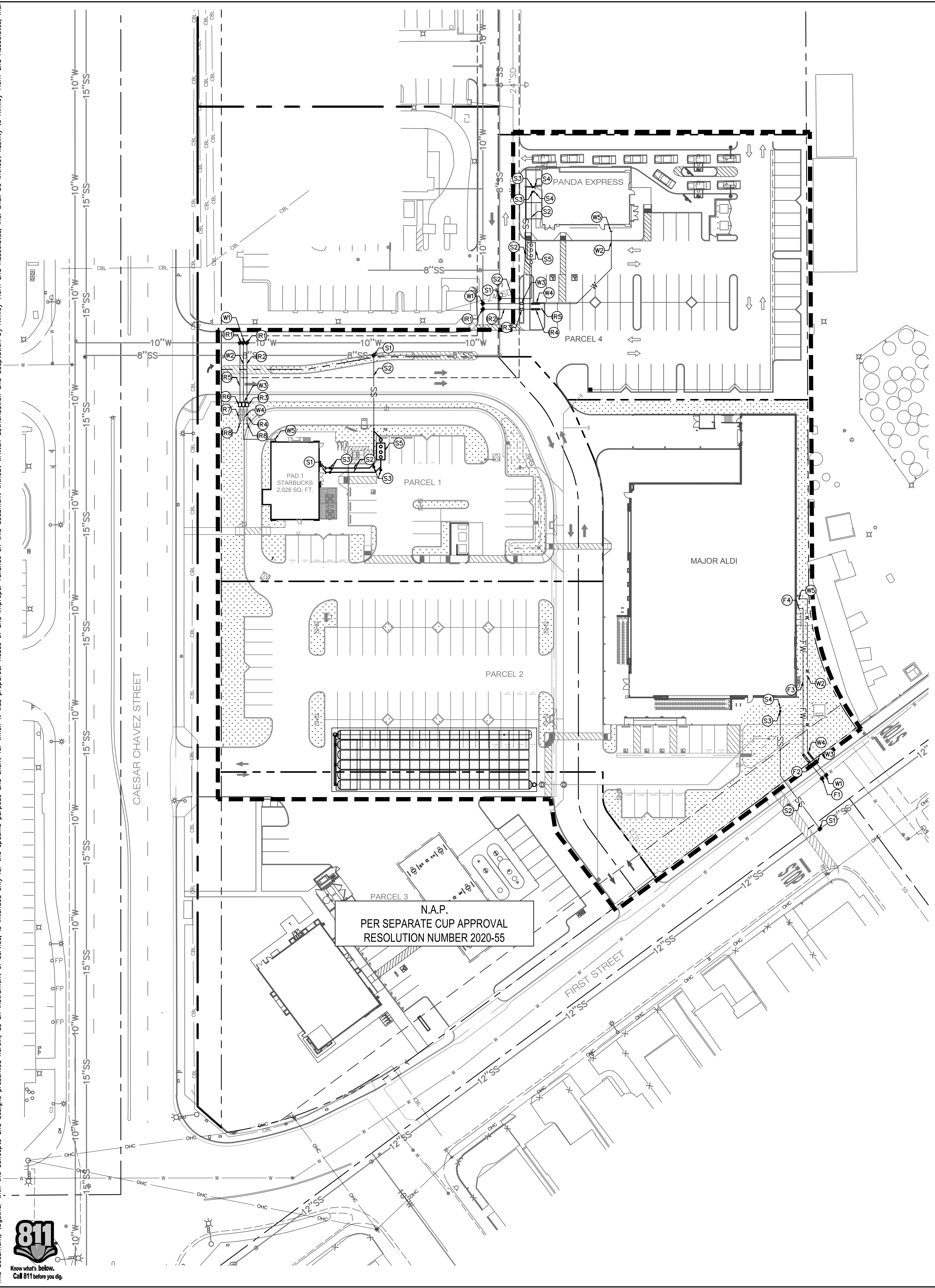
ALL PROPOSED ELEVATIONS SHOWN ON THIS PLAN ARE +100.00 FT



<p>Kimley >>> Horn</p> <p>© 2016 KIMLEY-HORN AND ASSOCIATES, INC. 765 THE CITY DRIVE, SUITE 200, ORANGE, CA 92668 PHONE: 714-939-1030 FAX: 714-939-9488 WWW.KIMLEY-HORN.COM</p>	<p>LICENSED PROFESSIONAL</p> <p> KHA PROJECT 194256991 DATE 10/05/2021 SCALE AS SHOWN DESIGNED BY HS DRAWN BY MH CHECKED BY HS </p>
<p>PRELIMINARY GRADING AND DRAINAGE PLAN</p>	
<p>FOUNTAINHEAD PLAZA</p> <p>PREPARED FOR</p> <p>FOUNTAINHEAD DEVELOPMENT</p> <p>CITY OF COACHELLA CA</p>	<p>SHEET NUMBER</p> <p>1 OF 2</p>



Plotted By: Smith, Hannah. Sheet Set: Rto. Layout: PRELIMINARY GRADING AND DRAINAGE PLAN. October 27, 2021. 03:38:59pm. K:\ORA_LDEV\194256001 - Fountainhead Coacheila\CADD_Exhibits\ALDI_Panda_2.dwg. This document, together with the concepts and designs presented herein, is intended only for the specific purpose and client for which it was prepared. Reuse of and improper reliance on this document without written authorization and adaptation by Kimley-Horn and Associates, Inc. shall be without liability to Kimley-Horn and Associates, Inc.



N.A.P.
PER SEPARATE CUP APPROVAL
RESOLUTION NUMBER 2020-55

LEGEND

	CENTER LINE
	PROPERTY LINE
	LIMIT OF WORK LINE
	PROPOSED SANITARY SEWER PIPE
	PROPOSED DOMESTIC WATER PIPE
	PROPOSED FIRE WATER PIPE
	PROPOSED GAS LINE
	POINT OF CONNECTION (© BLDG)
	POINT OF CONNECTION (TO EXISTING)
	PROPOSED SEWER CLEANOUT
	LANDSCAPE/PLANTER AREA
	PROPOSED REDUCED PRESSURE DETECTOR BACKFLOW ASSEMBLY
	WATER APPURTENANCES
	METER
	FIRE DEPARTMENT CONNECTION (FDC)
	POST INDICATOR VALVE (PIV)

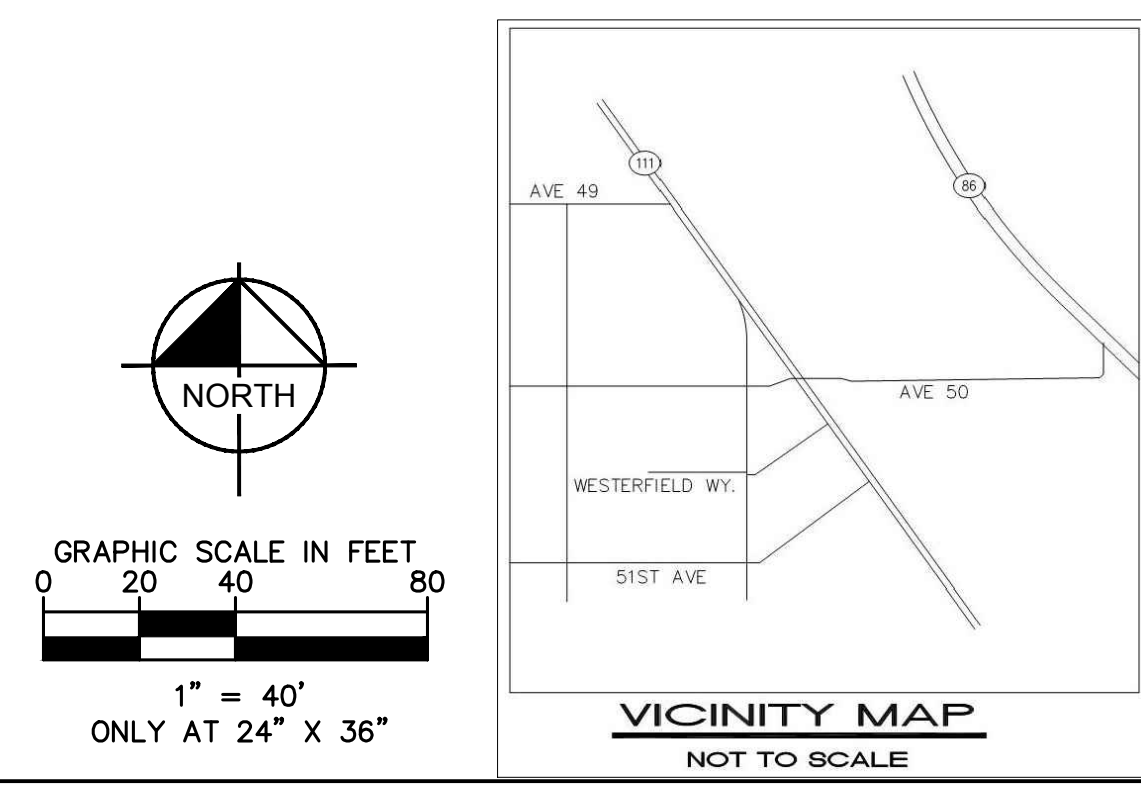
- DOMESTIC WATER**
- (W1) HOT TAP EXISTING WATER MAIN. COORDINATE TAP WITH COACHELLA WATER AUTHORITY.
 - (W2) INSTALL 2" PVC SCH-80 DOMESTIC WATER PIPE.
 - (W3) INSTALL 2" DOMESTIC WATER METER.
 - (W4) INSTALL 2" DOMESTIC WATER REDUCED PRESSURE BACKFLOW PREVENTOR, OR APPROVED EQUAL.
 - (W5) BUILDING POINT OF CONNECTION (5-FT FROM BUILDING FACE).

- IRRIGATION**
- (R1) HOT TAP EXISTING WATER MAIN. COORDINATE TAP WITH COACHELLA WATER AUTHORITY.
 - (R2) INSTALL 1 1/2" PVC SCH-80 IRRIGATION LINE.
 - (R3) INSTALL 1 1/2" IRRIGATION WATER METER.
 - (R4) INSTALL 1 1/2" IRRIGATION REDUCED PRESSURE BACKFLOW PREVENTOR.
 - (R5) INSTALL 2" PVC SCH-80 IRRIGATION LINE.
 - (R6) INSTALL 2" IRRIGATION WATER METER.
 - (R7) INSTALL 2" IRRIGATION REDUCED PRESSURE BACKFLOW PREVENTOR.
 - (R8) IRRIGATION POINT OF CONNECTION. REFER TO LANDSCAPE IRRIGATION PLANS FOR CONTINUATION.

- FIRE WATER**
- (F1) HOT TAP TO EXISTING WATER MAIN. COORDINATE WITH COACHELLA WATER AUTHORITY.
 - (F2) INSTALL 6" FEBCO 826YD REDUCED PRESSURE ASSEMBLY, OR APPROVED EQUAL.
 - (F3) INSTALL 6" PVC C-900, CLASS 150, FIRE WATER LINE.
 - (F4) BUILDING POINT OF CONNECTION (5-FT FROM BUILDING FACE).

- SEWER CONSTRUCTION NOTES**
- (S1) CONNECT TO EXISTING SEWER MAIN PER CITY OF COACHELLA STANDARD PLANS.
 - (S2) INSTALL 6" SDR-35 SANITARY SEWER PIPE. TRENCH PER CITY OF COACHELLA STANDARD PLANS.
 - (S3) INSTALL SANITARY SEWER CLEANOUTS PER CITY OF COACHELLA STANDARD PLANS.
 - (S4) SANITARY SEWER BUILDING POINT OF CONNECTION. REFER TO PLUMBING PLANS FOR CONTINUATION.
 - (S5) GREASE INTERCEPTOR.

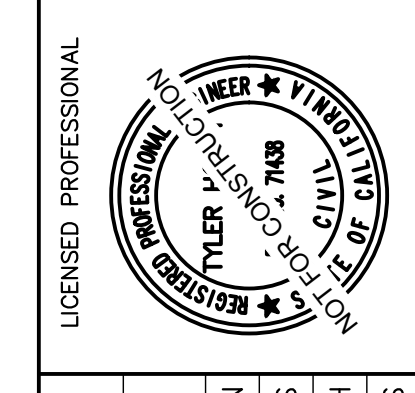
GENERAL NOTE
THE EXISTING UTILITIES SHOWN ON THE PLAN ARE BASED ON AVAILABLE RECORDS. THE CONTRACTOR MUST FIELD DETERMINE THE LOCATION AND DEPTH OF ALL UTILITIES PRIOR TO ANY CONSTRUCTION. REPORT DISCREPANCIES AND POTENTIAL CONFLICTS WITH PROPOSED UTILITIES TO ENGINEER PRIOR TO INSTALLATION OF ANY PIPING.



No.	REVISIONS	DATE	BY

Kimley & Horn

© 2016 KIMLEY-HORN AND ASSOCIATES, INC.
765 THE CITY DRIVE, SUITE 200, ORANGE, CA 92668
PHONE: 714-939-1030 FAX: 714-939-9488
WWW.KIMLEY-HORN.COM



KHA PROJECT	194256991
DATE	10/05/2021
SCALE	AS SHOWN
DESIGNED BY	HS
DRAWN BY	MH
CHECKED BY	HS

PRELIMINARY UTILITY PLAN