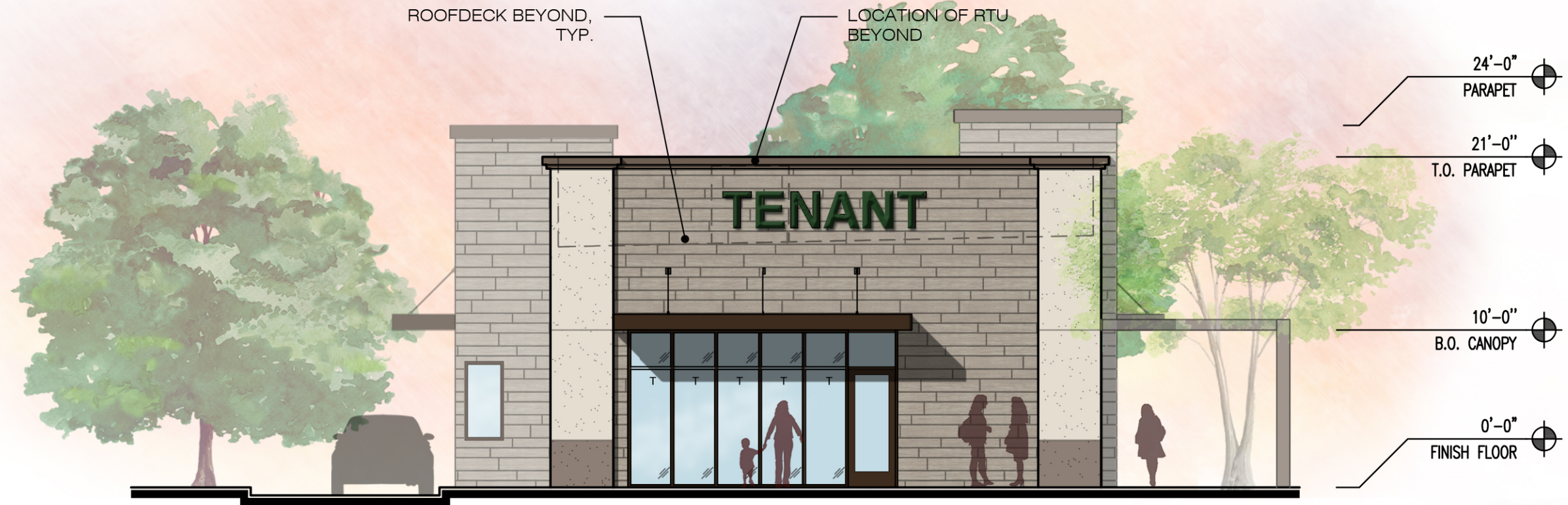
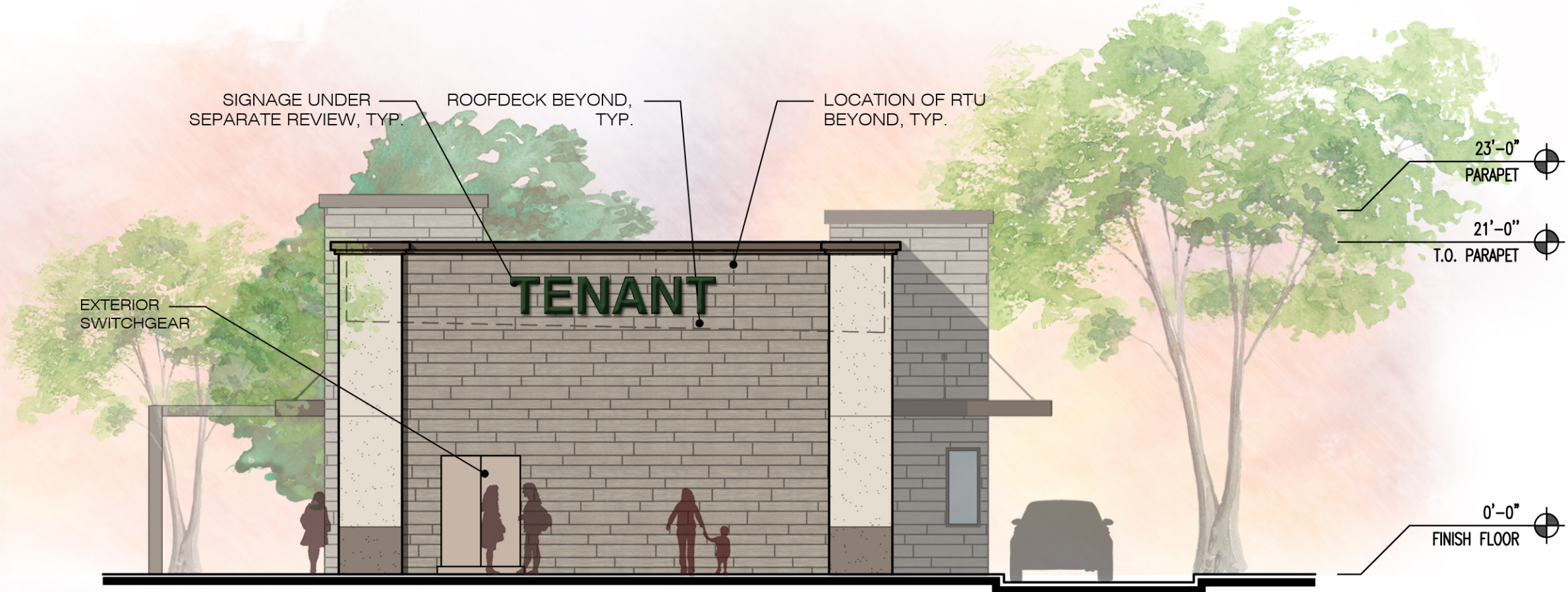




EAST ELEVATION




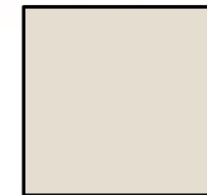
SOUTH ELEVATION



NORTH ELEVATION



WEST ELEVATION

	HARDIE PANEL W/PAINT SHERWIN WILLIAMS "MEGA GREIGE" SW7031		PLASTER SHERWIN WILLIAMS "PACER WHITE" SW6098		PLASTER SHERWIN WILLIAMS "SPALDING GREY" SW6074		CORNICE/ PATIO TRELLIS SHERWIN WILLIAMS "HOMESTEAD BROWN" SW7515
	METAL DOOR SHERWIN WILLIAMS "PACER WHITE" SW6098		METAL DOOR SHERWIN WILLIAMS "MEGA GREIGE" SW7031		STOREFRONT & CANOPY- DARK BRONZE ANODIZED ALUMINUM		

NOTE:
ALL COLORS/MATERIALS TO BE
CONFIRMED WITH PHYSICAL SAMPLES
WHEN POSSIBLE.

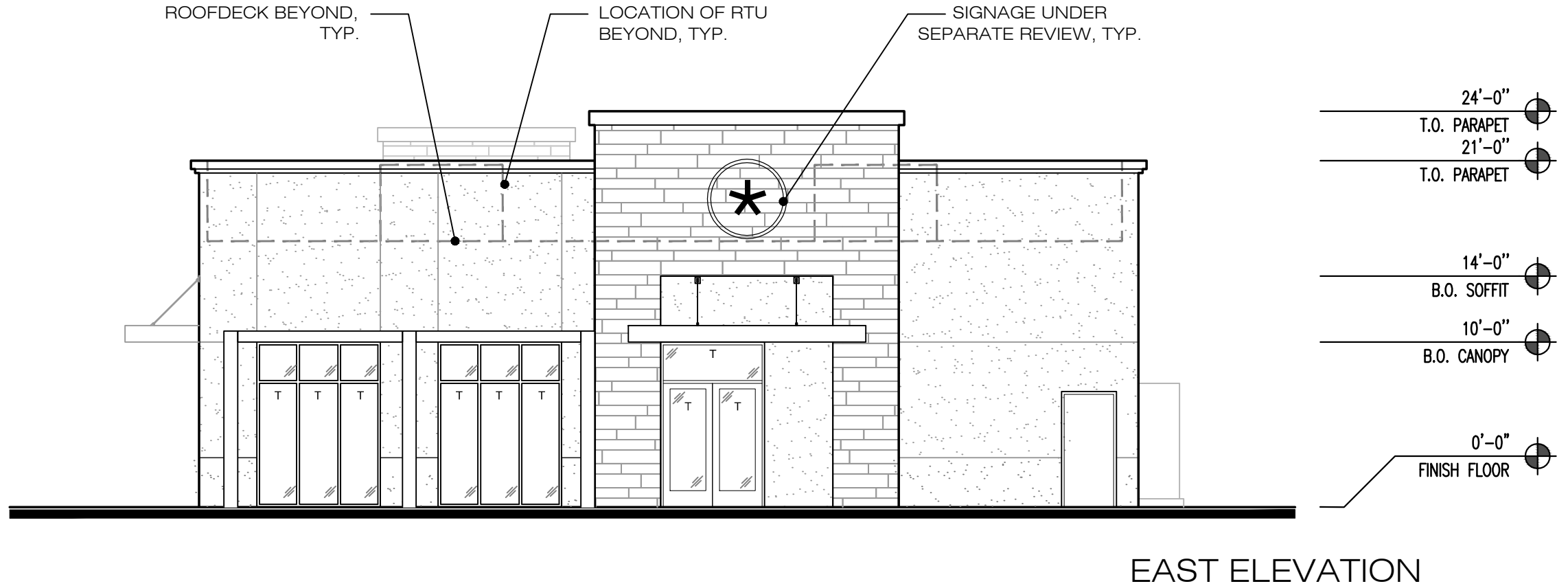
MULTI-TENANT

NEC CESAR CHAVEZ STREET & FIRST STREET COACHELLA, CALIFORNIA

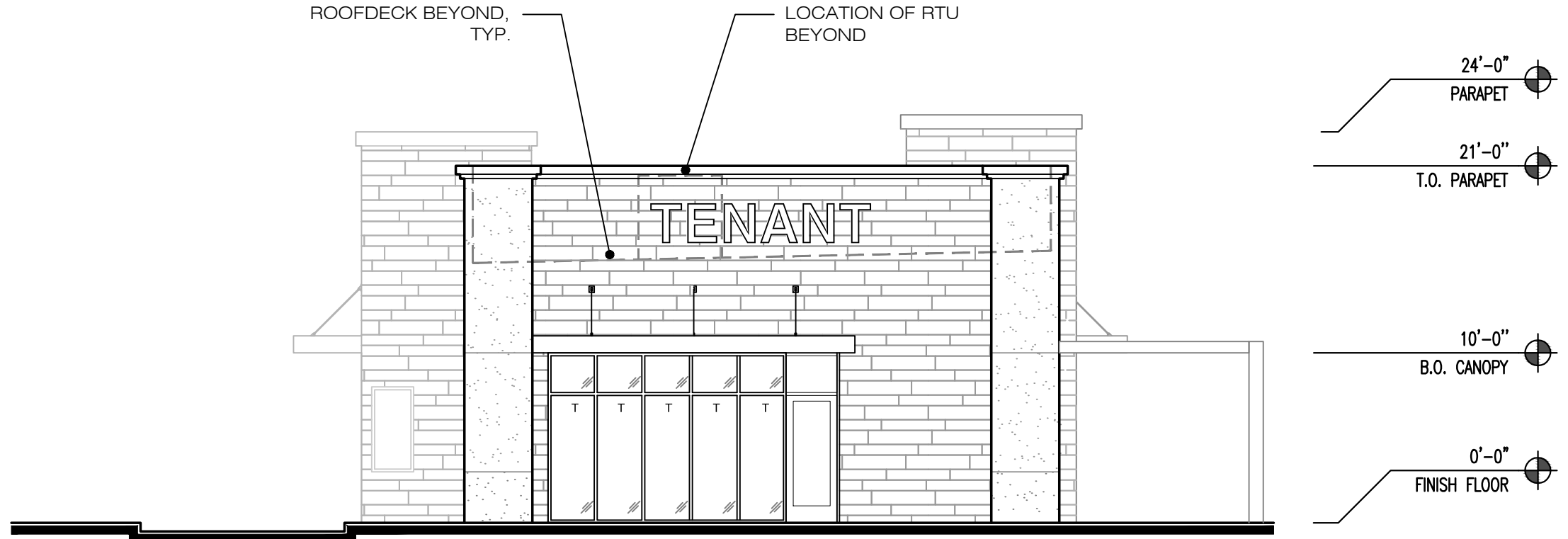
ELEVATIONS

Scale: 1/8" = 1'-0"
September 24, 2021

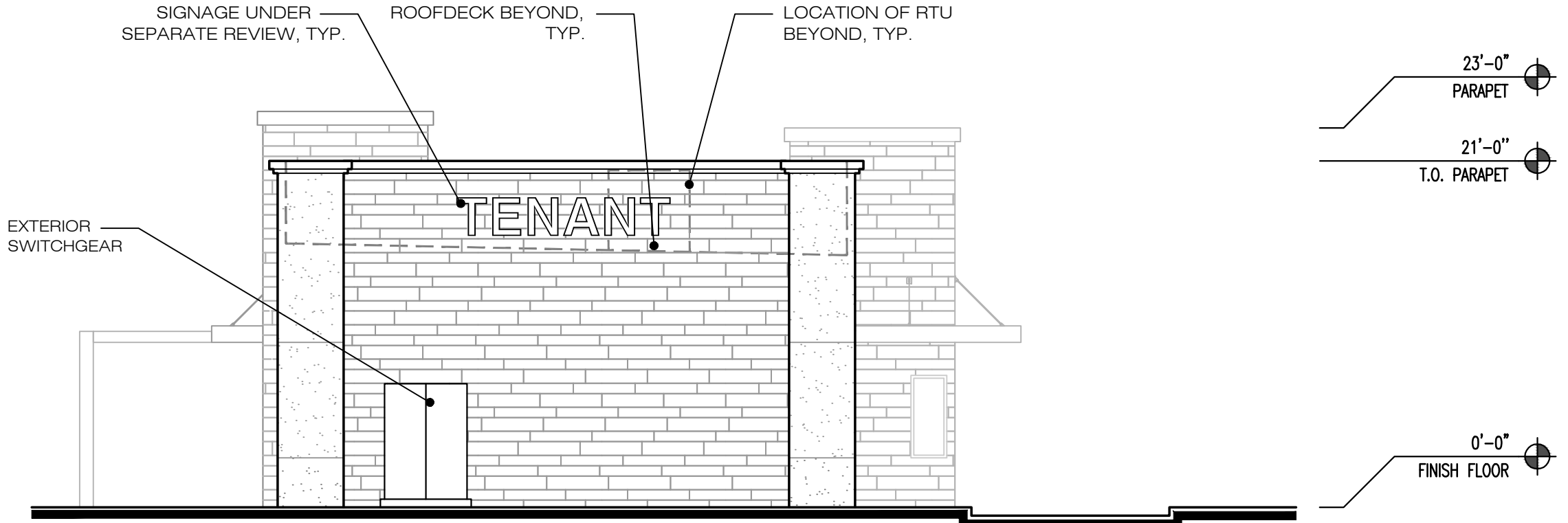
P:\19\19682 - Coachella, First & Harrison Starbucks Shell
CD\Design\Elevations\19682 - Design Elevations.dwg
The plans, ideas, arrangements and designs indicated or represented by this drawing are owned by, and are the property of BICKEL GROUP, and were created and developed solely for use on, and in connection with the specific project, and shall not be used, in whole or in part, for any purpose for which they were not originally intended without written permission from BICKEL GROUP © 2015.



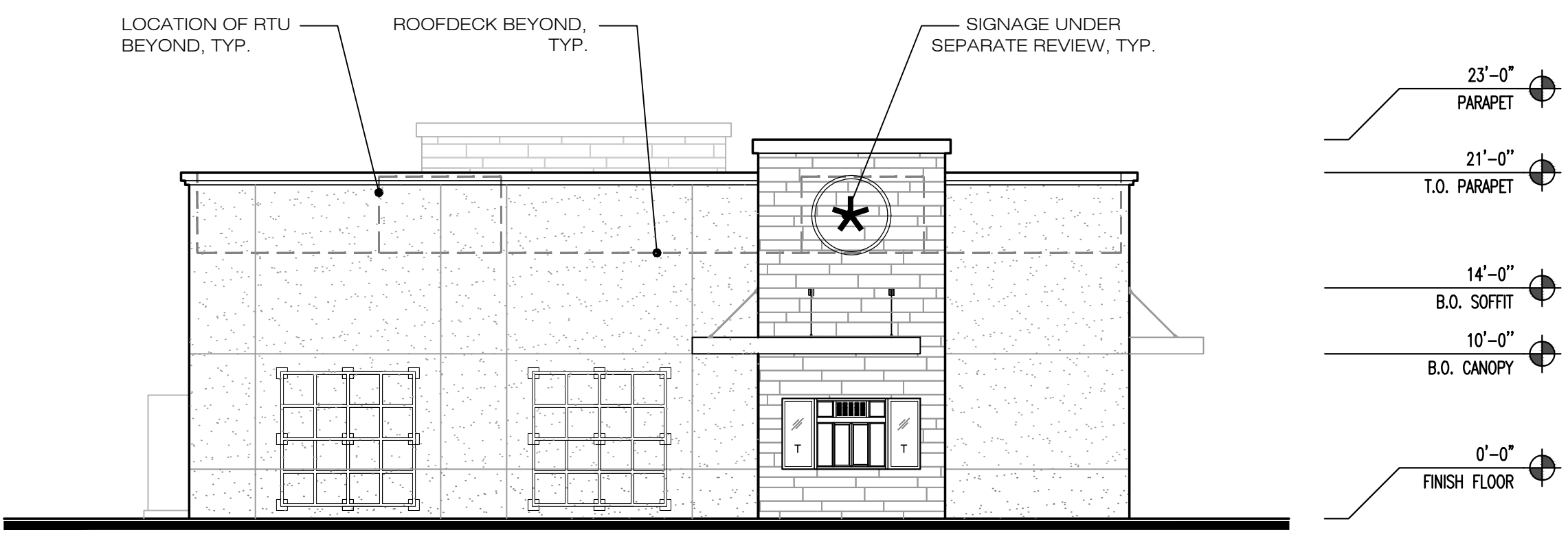
EAST ELEVATION



SOUTH ELEVATION



NORTH ELEVATION



WEST ELEVATION

- | | | | | | | | |
|---|---|---|---|---|--|---|--|
|  | HARDIE PANEL W/PAINT
SHERWIN WILLIAMS
"MEGA GREIGE"
SW7031 |  | PLASTER
SHERWIN WILLIAMS
"PACER WHITE"
SW6098 |  | PLASTER
SHERWIN WILLIAMS
"SPALDING GREY"
SW6074 |  | CORNICE/
PATIO TRELLIS
SHERWIN WILLIAMS
"HOMESTEAD BROWN"
SW7515 |
|  | METAL DOOR
SHERWIN WILLIAMS
"PACER WHITE"
SW6098 |  | METAL DOOR
SHERWIN WILLIAMS
"MEGA GREIGE"
SW7031 |  | STOREFRONT & CANOPY-
DARK BRONZE
ANODIZED ALUMINUM | | |

NOTE:
ALL COLORS/MATERIALS TO BE
CONFIRMED WITH PHYSICAL SAMPLES
WHEN POSSIBLE.

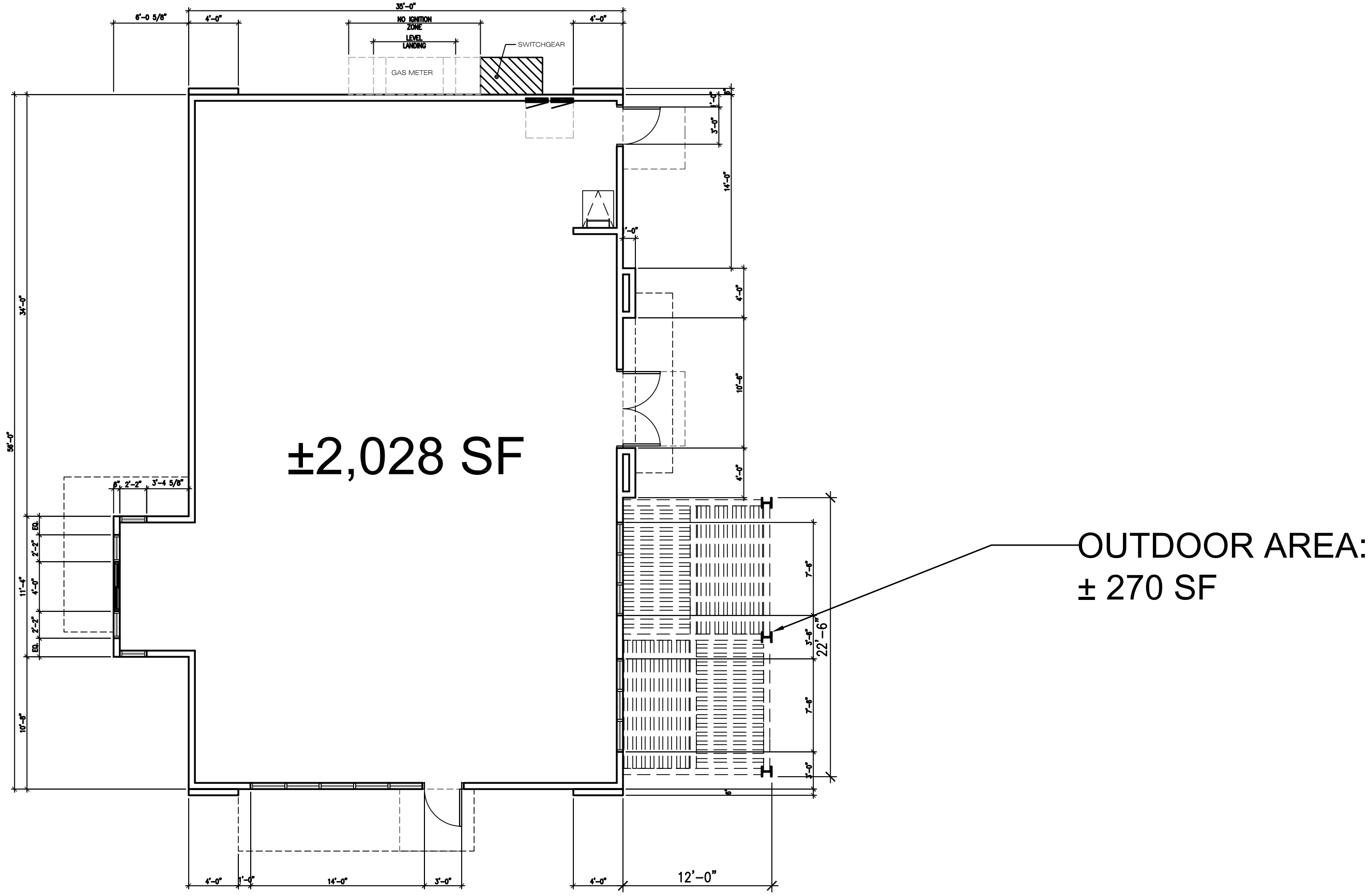
MULTI-TENANT

NEC CESAR CHAVEZ STREET & FIRST STREET COACHELLA, CALIFORNIA

ELEVATIONS

Scale: 1/8" = 1'-0"
September 24, 2021

P:\1919682 - Coachella, First & Harrison Starbucks Shell
CD\Design\Elevations\19682 - Design Elevations.dwg
The plans, ideas, arrangements and designs indicated or represented by this drawing are owned by, and are the property of BICKEL GROUP, and were created and developed solely for use on, and in connection with this specific project, and shall not be used, in whole or in part, for any purpose for which they were not originally intended without written permission from BICKEL GROUP © 2015.



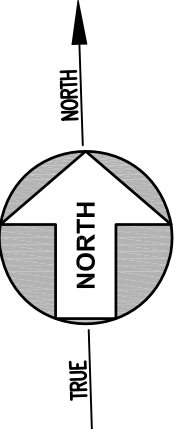
MULTI-TENANT
NEC CESAR CHAVEZ STREET & FIRST STREET
COACHELLA, CALIFORNIA

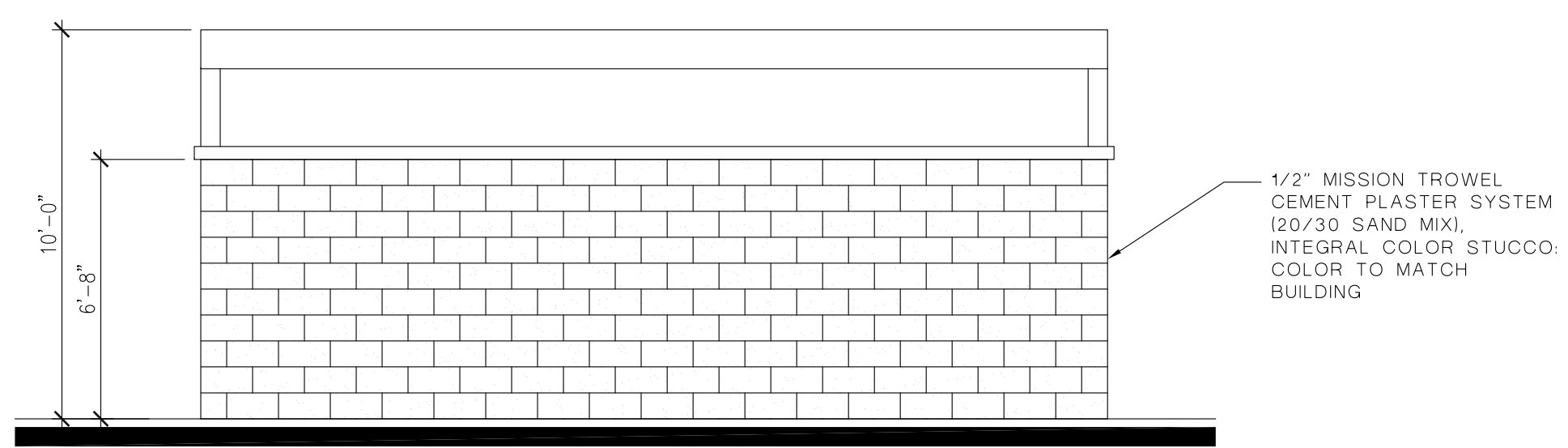
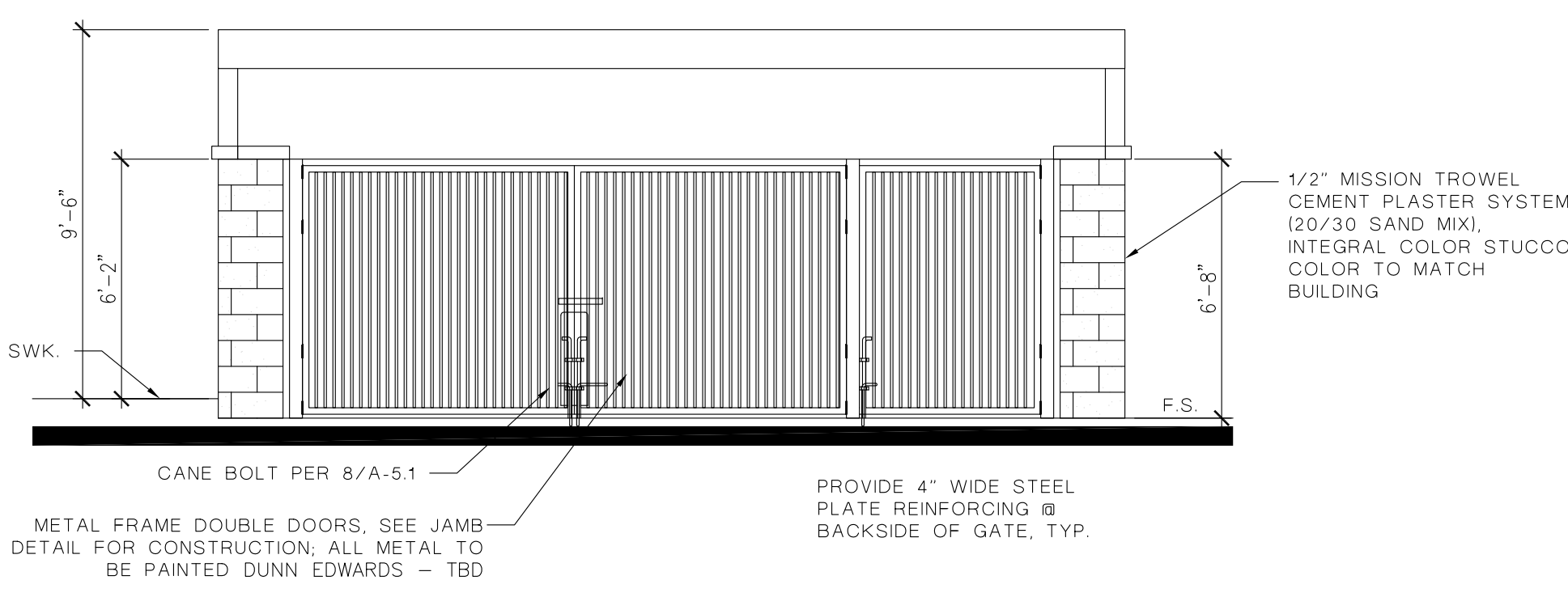
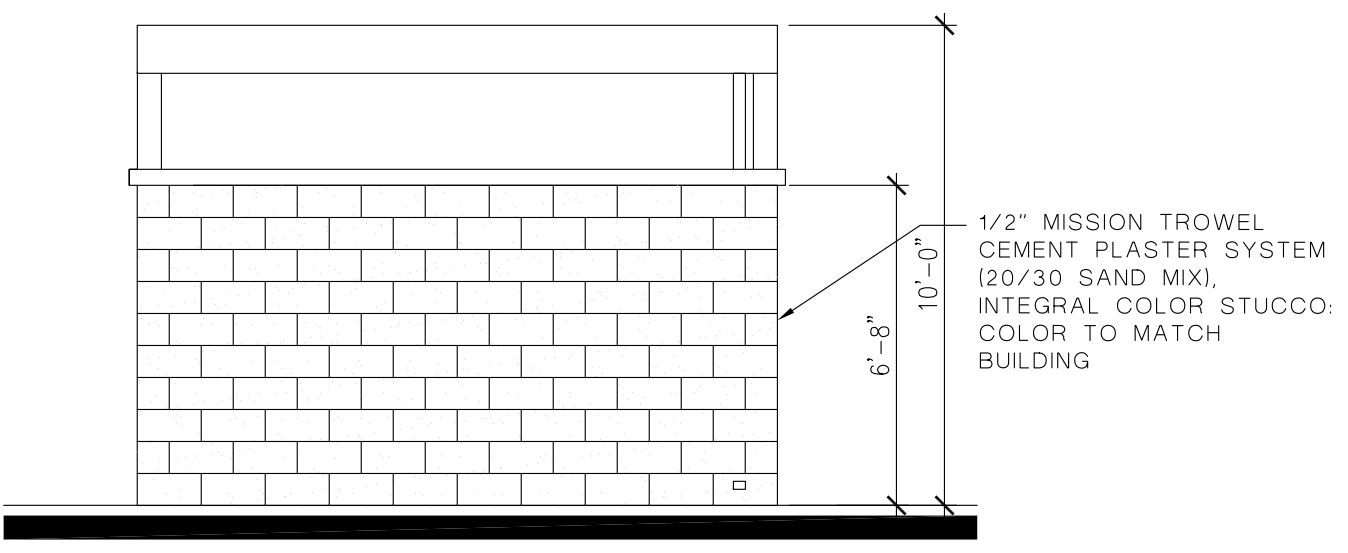
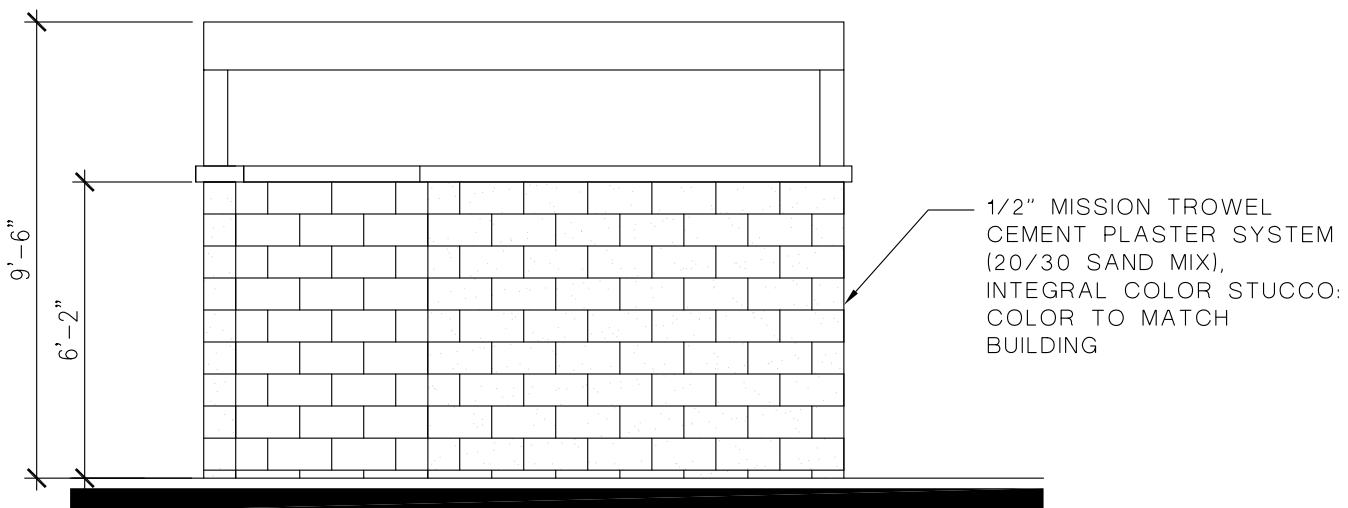
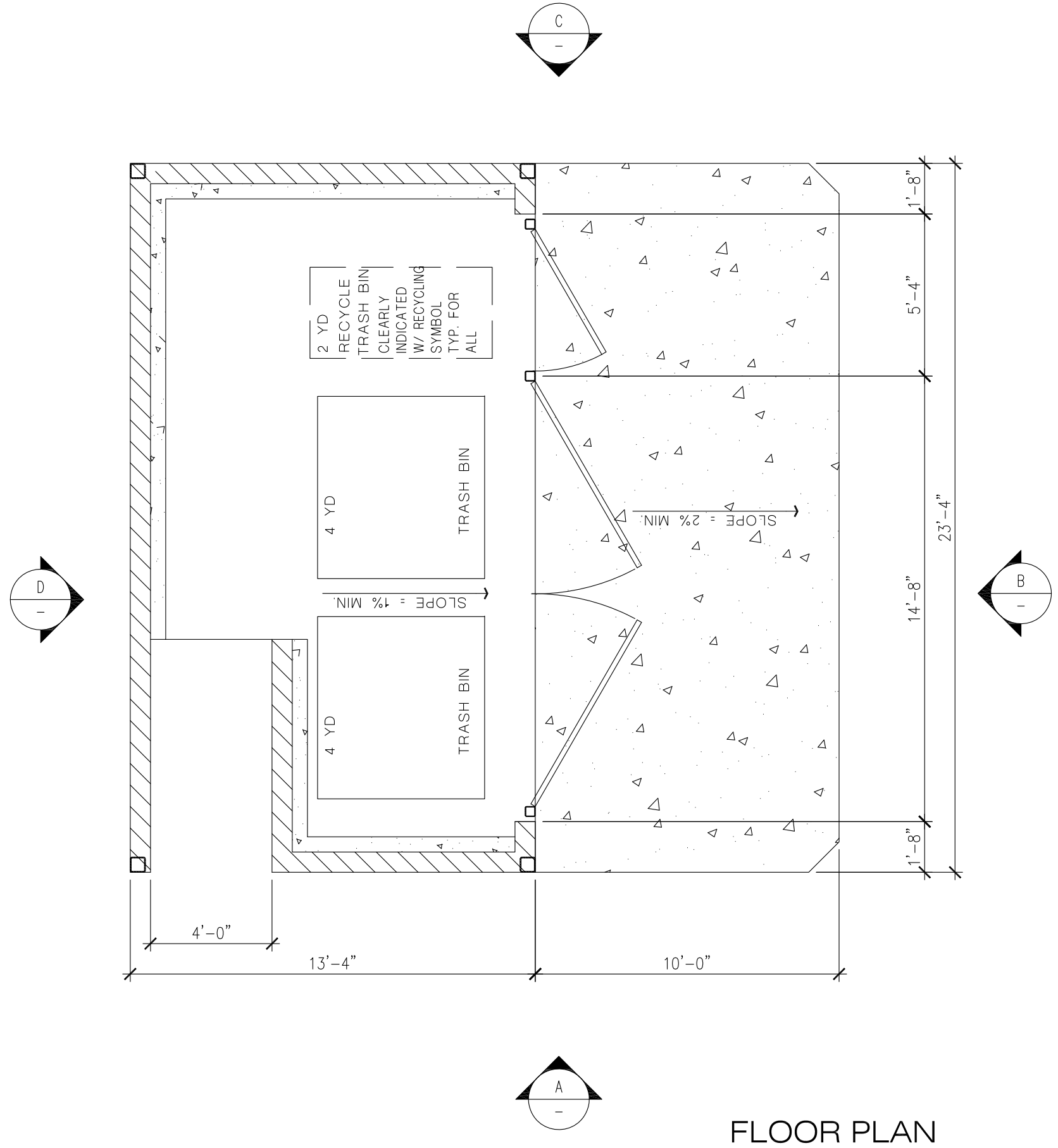
FLOOR PLAN

Scale: 1/8" = 1'-0"

November 23, 2021

P:\19\19682 - Coachella, First & Harrison Starbucks Shell
 CD\Design\Floor Plan\19682 - Design Floor Plan.dwg
 The plans, ideas, arrangements and designs indicated or represented by this drawing are owned by, and are the property of BICKEL GROUP, and were created and developed solely for use on, and in connection with this specific project, and shall not be used, in whole or in part, for any purpose for which they were not originally intended without written permission from BICKEL GROUP © 2015.







STOREFRONT CANOPY
DARK BRONZE
ANODIZED ALUMINUM



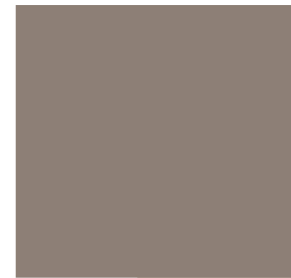
CORNICE
PLASTER FINISH
SHERWIN WILLIAMS
HOMESTEAD BROWN
SW7515

HARDIE PANEL
SHERWIN WILLIAMS PAINT



MEGA GREIGE
SW7031

PLASTER
SHERWIN WILLIAMS PAINT



SPALDING GRAY
SW6074



COOL BEIGE
SW9086



PACER WHITE
SW6098



BICKEL GROUP
ARCHITECTURE
BICKEL GROUP INCORPORATED
3600 BIRCH STREET, SUITE 120
NEWPORT BEACH, CA 92660
P: 949.757.0411 F: 949.757.0511
www.bickelgrp.com

MULTI-TENANT

NEC CESAR CHAVEZ STREET & FIRST STREET
COACHELLA, CALIFORNIA

MATERIAL
BOARD
May 14, 2020

The plans, views, arrangements and designs included or incorporated by the drawing are owned by, and are the property of BICKEL GROUP, and every detail and dimension given by use in any or all connection with the specific program and shall not be used in whole or in part, for any purpose for which they were not originally prepared without written permission from BICKEL GROUP © 2017.