



STAFF REPORT 12/18/2024

TO: Planning Commission Chair and Commissioners

FROM: Adrian Moreno, Associate Planner
Andrew Simmons, City Engineer

SUBJECT: Library Annex Conceptual Design for the construction of the Coachella Library Annex building at 1538 7th Street. Applicant: City of Coachella.

STAFF RECOMMENDATION:

Staff recommends that the Planning Commission direct staff to continue preparing a complete development plan set for the staff recommended alternative design, a desert style design, for the Library Annex project. Staff will present a joint Planning Commission and City Council hearing at a future date.

BACKGROUND:

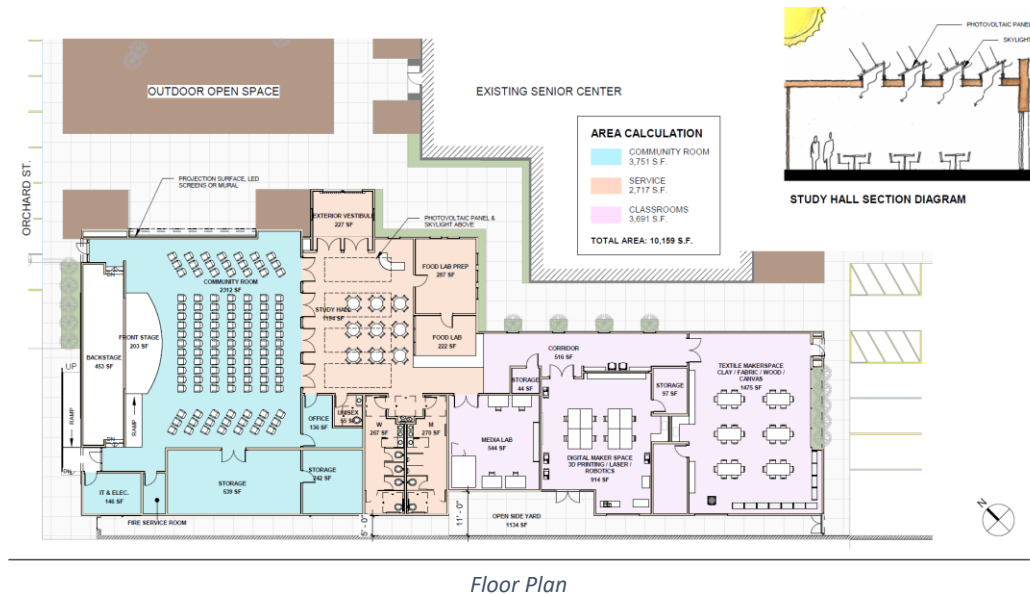
In September 2022, the City of Coachella was awarded a grant for \$4,568,807 from the California State Library Building Forward Grant Program to renovate and upgrade its Library Annex building. Built in 1927, the Coachella Public Library Annex infrastructure has reached the need for renovation. The existing building is an old church building totaling 7,701 sq. ft. On September 4, 2024 Planning Commission were presented three different architectural elevations and provided direction to staff to prepare a development plan set for a modern style elevation with a gable roof entrance with Spanish style roof tile. IDF Group is the city's architectural consultant for this project.

On September 4, 2024, the Planning Commission provided direction to staff to prepare a modern style elevation for the library annex. Staff proceeded with an alternative exterior design than what was recommended by Planning Commission.



SITE PLAN:

The below exhibit depicts the 10,159 SF library annex project. At the building entrance, the site provides study hall space and a food lab area. The west portion of the building is planned for community room space with a stage, seating, and book shelves. The east end of the building is planned to be dedicated to maker space, digital maker space, and a media lab that may include a ceramic studio and a recording room. The floor plan design and project amenities are subject to change.



STAFF AND ARCHITECT RECOMMENDED ELEVATION

Staff and the architect recommend to the Planning Commission the desert style elevation for the library annex project. The elevation provides a stucco finish at the entrance with clerestory window and flat roof. The elevations show a 32 x 17 foot projection surface for an LED screen or mural at the northern elevation, and a mural at the western elevation.



Figure 1 – North Perspective



Figure 2 – North Perspective

LANDSCAPING

The project is not anticipated to provide landscape improvements at the property, as grant funding is only for the building and not for any exterior features such as landscaping.

DIRECTION

Staff recommends that the Planning Commission direct staff to prepare a complete development plan set for the proposed desert style elevation for the Library Annex project.

Attachments:

1. Library Annex – Staff and Architect Recommendation
2. Library Annex – Original Three Conceptual Elevations