

Coachella Resident Engagement Academy Survey Summary:					
Questions	Responses				
	1 Very Low	2 Low	3 Average	4 High	5 Very High
How would you rate your knowledge level of the City of Coachella <i>before</i> participating in the academy?	8	8	1		
How would you rate your knowledge level of the City of Coachella <i>after</i> participating in the academy?			3	10	4
How would you rate the application process?			3	4	10
How would you rate the overall organization and structure of the leadership academy workshops?			1	3	13
To what extent did the workshops meet your expectations in terms of content relevance?				9	8
How would you rate your satisfaction with the variety of topics covered during the workshops?			1	3	13
How would you rate the workshops' ability to enhance your understanding of leadership principles?			2	5	10
How would you rate your satisfaction with the balance between theoretical concepts and practical exercises?			4	4	9
<b>Rating Statements:</b>					
The extent of the workshops to encourage networking and collaboration among participants.		2	6	1	8
The level of engagement and interaction fostered during the workshop activities.			3	6	8
The leadership academy's ability to foster a supportive and inclusive learning environment.				3	14
The duration and pacing of the leadership academy workshops.			3	3	11

## Coachella Resident Engagement Academy Survey Summary:

Questions	Responses				
The workshops' ability to provide actionable strategies for personal leadership development.			1	7	9
The workshops' ability to encourage self-reflection on personal leadership styles.	1	2	6	8	
The workshops' ability to address practical applications of leadership skills in real-world scenarios.		2	7	8	
The clarity of communication and delivery by the workshop's presenters.				6	11
The effectiveness of the facilitators in delivering the workshops content.		1	4	12	
The quality of materials provided, including handouts, presentations, and resources.		1	1	15	
<b>Remaining Questions:</b>					
	<b>1 Very Low</b>	<b>2 Low</b>	<b>3 Average</b>	<b>4 High</b>	<b>5 Very High</b>
How was the workshops' ability to incorporate feedback and adapt to the needs of the participants?				6	8
Opportunities for Q&A and discussion during the workshops.		1	1	3	10
Overall, how would you rate the impact of the leadership academy workshop on your leadership skills and knowledge about the City of Coachella's operations?				3	12
What is the likeliness that you would play a volunteer role in the City of Coachella after participating in the academy?			2	5	6

**Coachella Resident Engagement Academy Survey Summary:**

**Questions**

**Responses**

**Narrative Response Themes:**

Include more information for renters.

Add one more session or additional time to discuss group project.

Add individual projects (draw ideal future of Coachella).

Thank you for your time and commitment to the community.

Allow for a plus one to sessions.

I want to participate again.

I appreciate the inclusion of a Spanish translator.

Include a session where all City Council participate.

Create a follow-up program for academy graduates. Networking.

The academy left a sense of empowerment.

Gracias. Todo muy bien.

Great opportunity and space to start getting involved in the community.

Have the mayor/city council make an appearance.

# EXPERIENCE QUESTIONS

## QUESTIONS

**1** - How would you rate your knowledge level of the City of Coachella before participating in the academy?

**2** - How would you rate your knowledge level of the City of Coachella *after* participating in the academy?

**3** - How would you rate the application process?

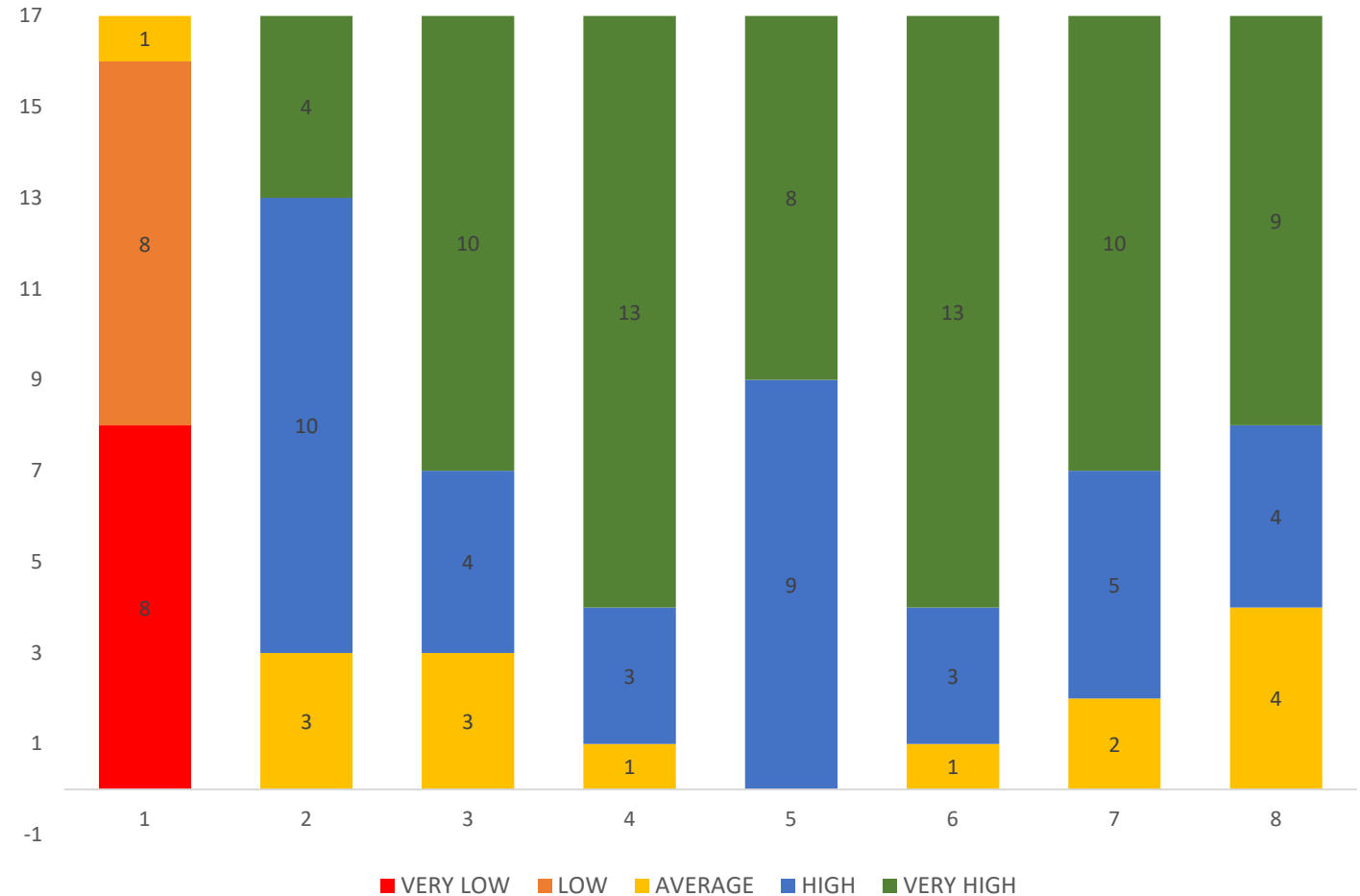
**4** - How would you rate the overall organization and structure of the leadership academy workshops?

**5** - To what extent did the workshops meet your expectations in terms of content relevance?

**6** - How would you rate your satisfaction with the variety of topics covered during the workshops?

**7** - How would you rate the workshops' ability to enhance your understanding of leadership principles?

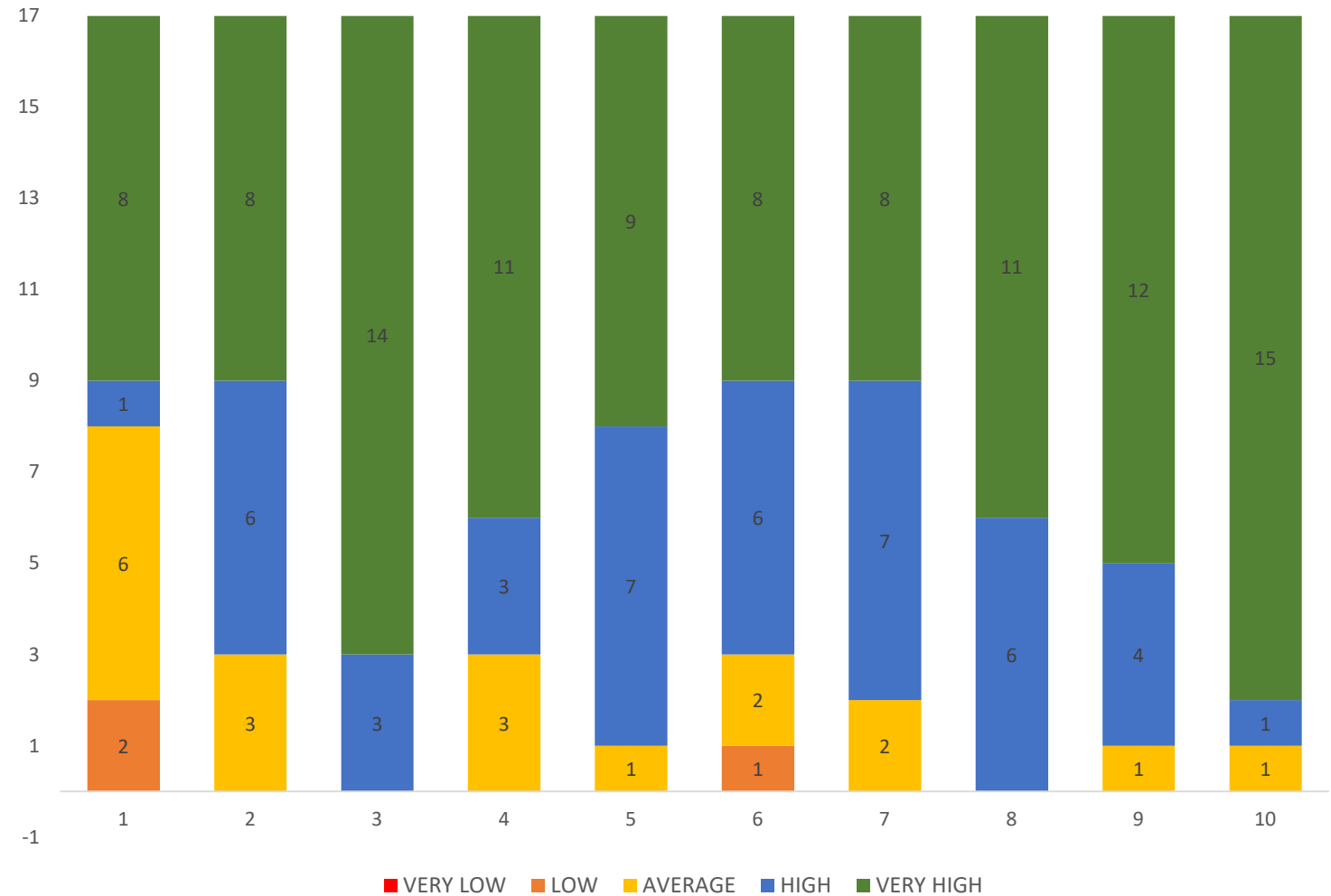
**8** - How would you rate your satisfaction with the balance between theoretical concepts and practical exercises?



# RATING QUESTIONS

## QUESTIONS

- 1** - The extent of the workshops to encourage networking and collaboration among participants.
- 2** - The level of engagement and interaction fostered during the workshop activities.
- 3** - The leadership academy's ability to foster a supportive and inclusive learning environment.
- 4** - The duration and pacing of the leadership academy workshops.
- 5** - The workshops' ability to provide actionable strategies for personal leadership development.
- 6** - The workshops' ability to encourage self-reflection on personal leadership styles.
- 7** - The workshops' ability to address practical applications of leadership skills in real-world scenarios.
- 8** - The clarity of communication and delivery by the workshop's presenters.
- 9** - The effectiveness of the facilitators in delivering the workshops content.
- 10** - The quality of materials provided, including handouts, presentations, and resources.



# REMAINING QUESTIONS

## QUESTIONS

**1** - How was the workshops' ability to incorporate feedback and adapt to the needs of the participants?

**2** - Opportunities for Q&A and discussion during the workshops.

**3** - Overall, how would you rate the impact of the leadership academy workshop on your leadership skills and knowledge about the City of Coachella's operations?

**4** - What is the likeliness that you would play a volunteer role in the City of Coachella after participating in the academy?

