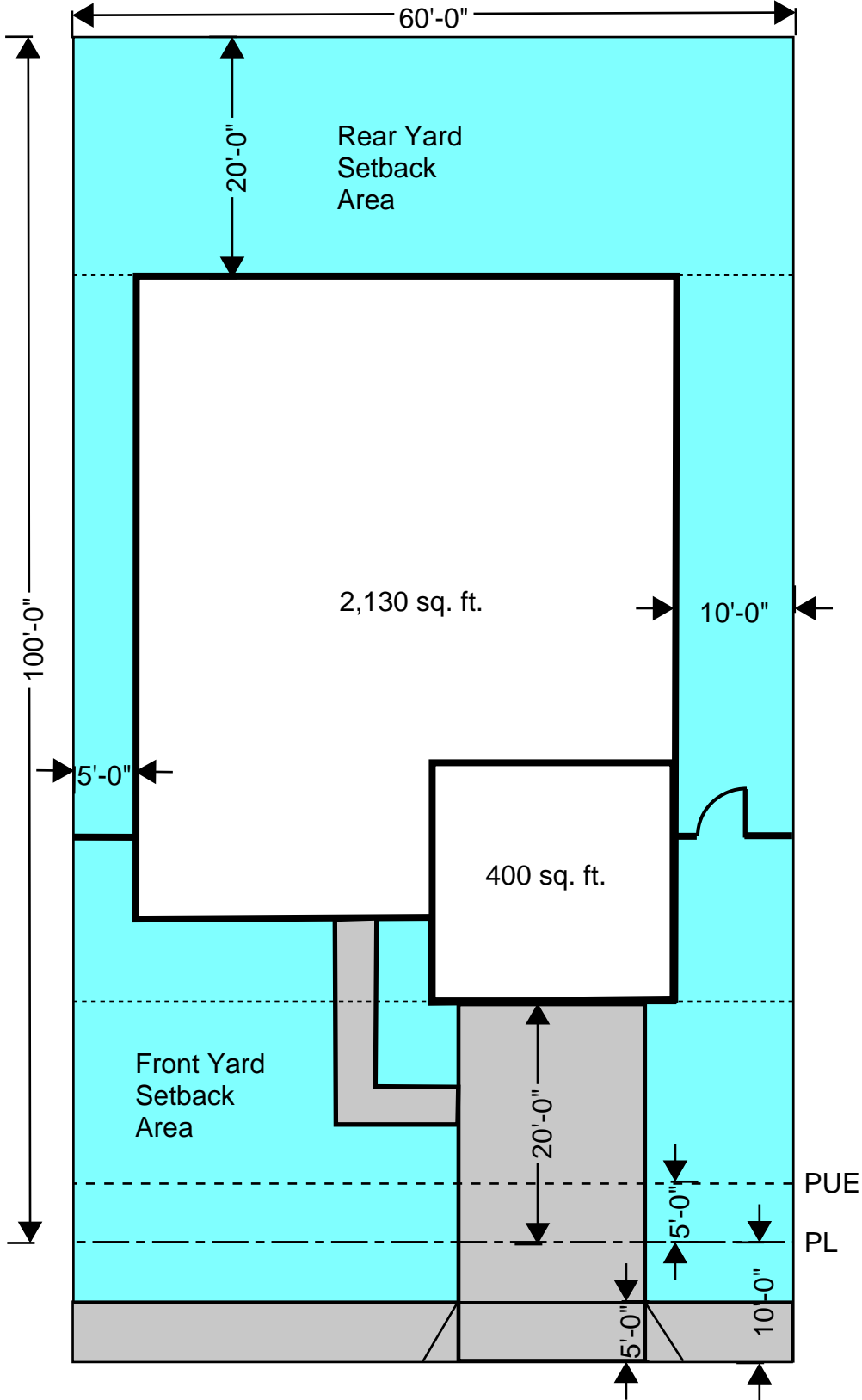
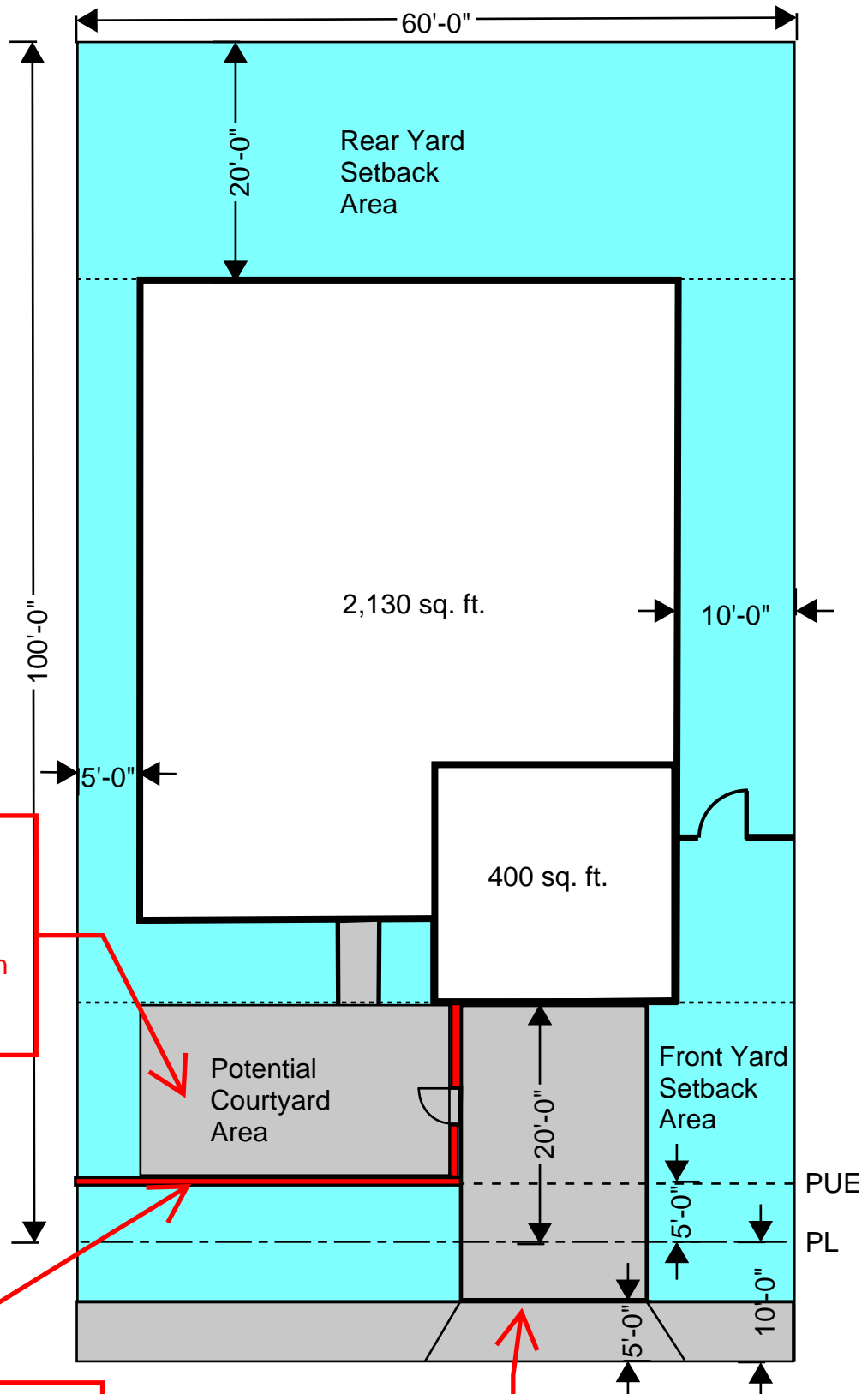


6,000 sq. ft. Single Family Residential Lot



6,000 sq. ft. Single Family Residential Lot with Courtyard and Entry Oriented to Driveway



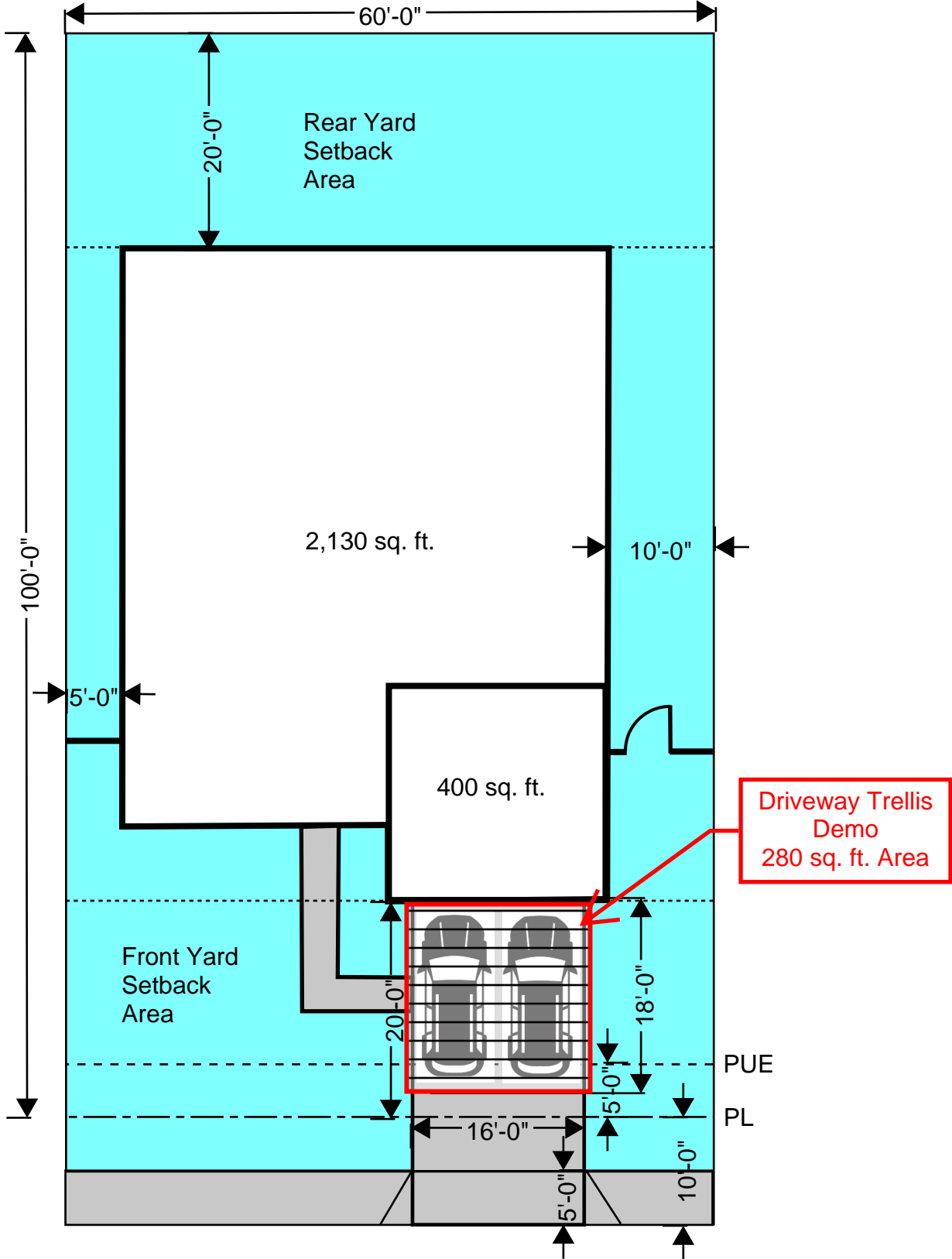
Front Yard Area between front building line and street line shall not be paved more than 60% of total front yard area

Courtyard built at Public Utility Easement (PUE) Line

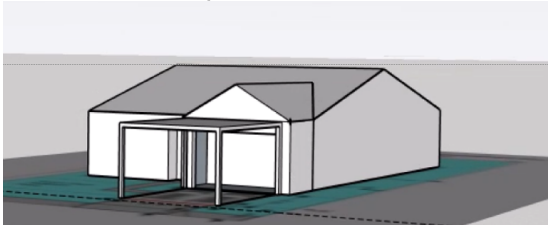
Driveway may not exceed 30 feet wide at each curb opening.

PUE
PL

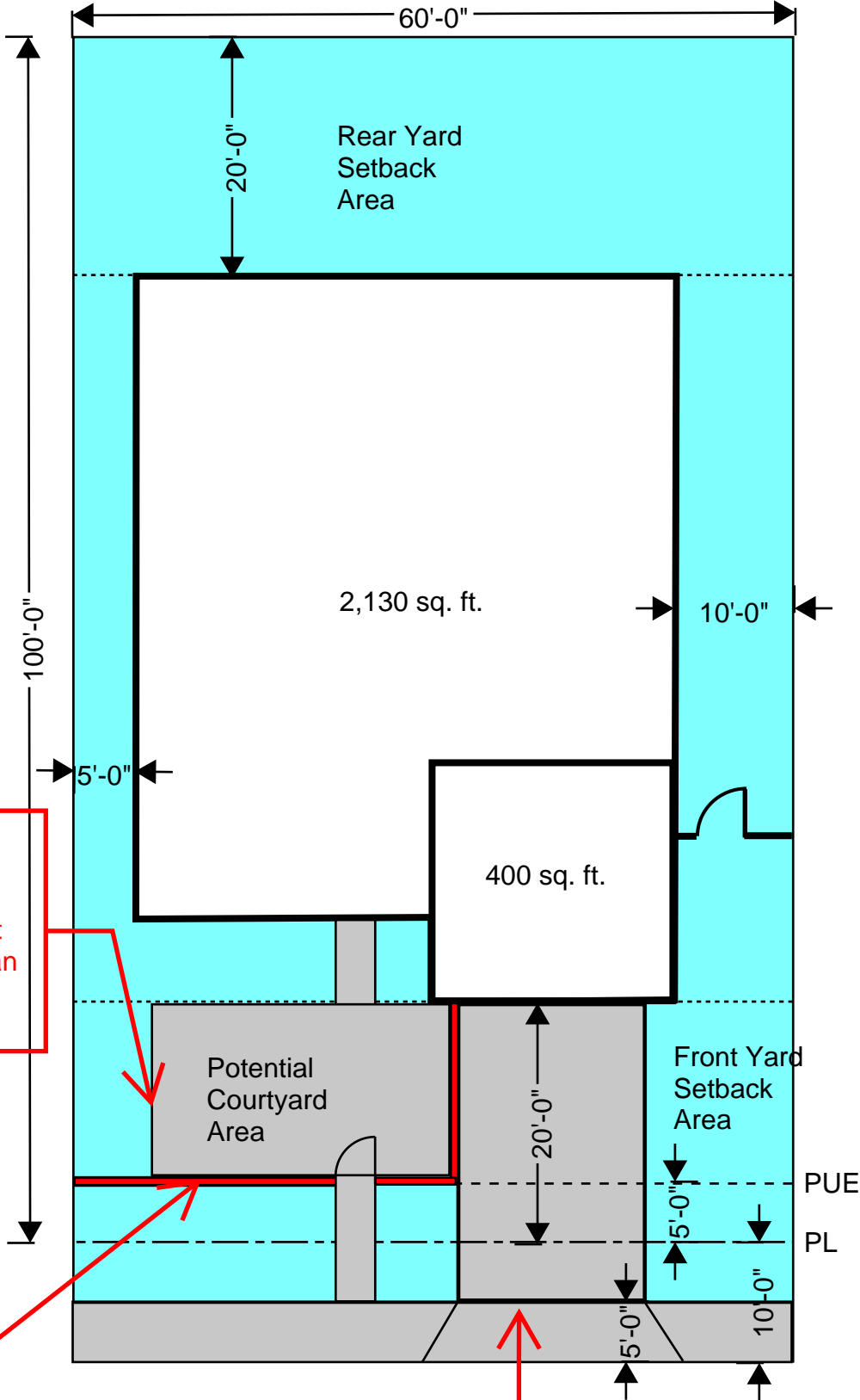
6,000 sq. ft. Single Family Residential Lot Driveway Trellis



Assumes 15' long vehicles



6,000 sq. ft. Single Family Residential Lot with Courtyard and Entry Oriented to Street



Front Yard Area between front building line and street line shall not be paved more than 60% of total front yard area

Courtyard built at Public Utility Easement (PUE) Line

Driveway may not exceed 30 feet wide at each curb opening.