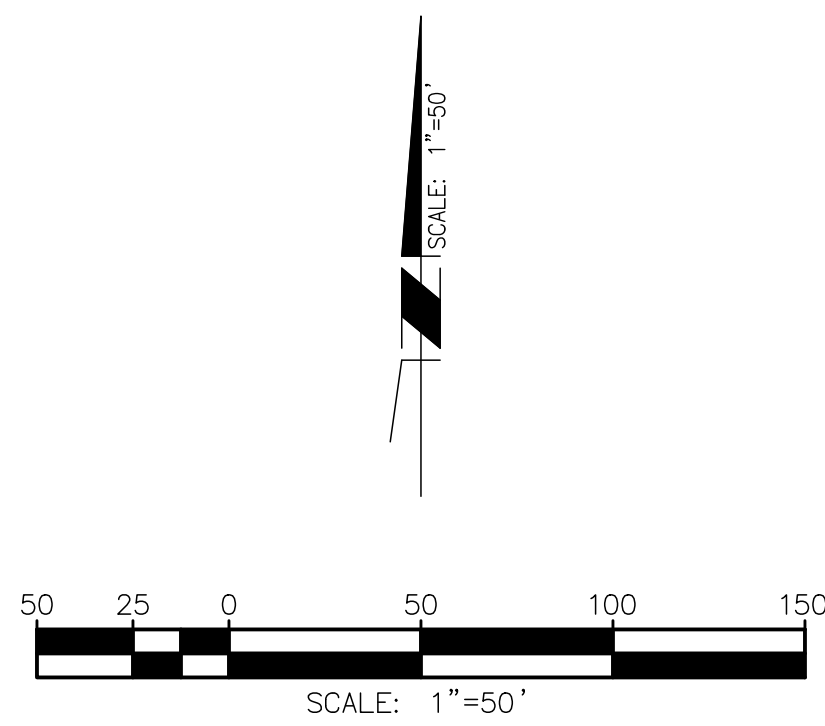
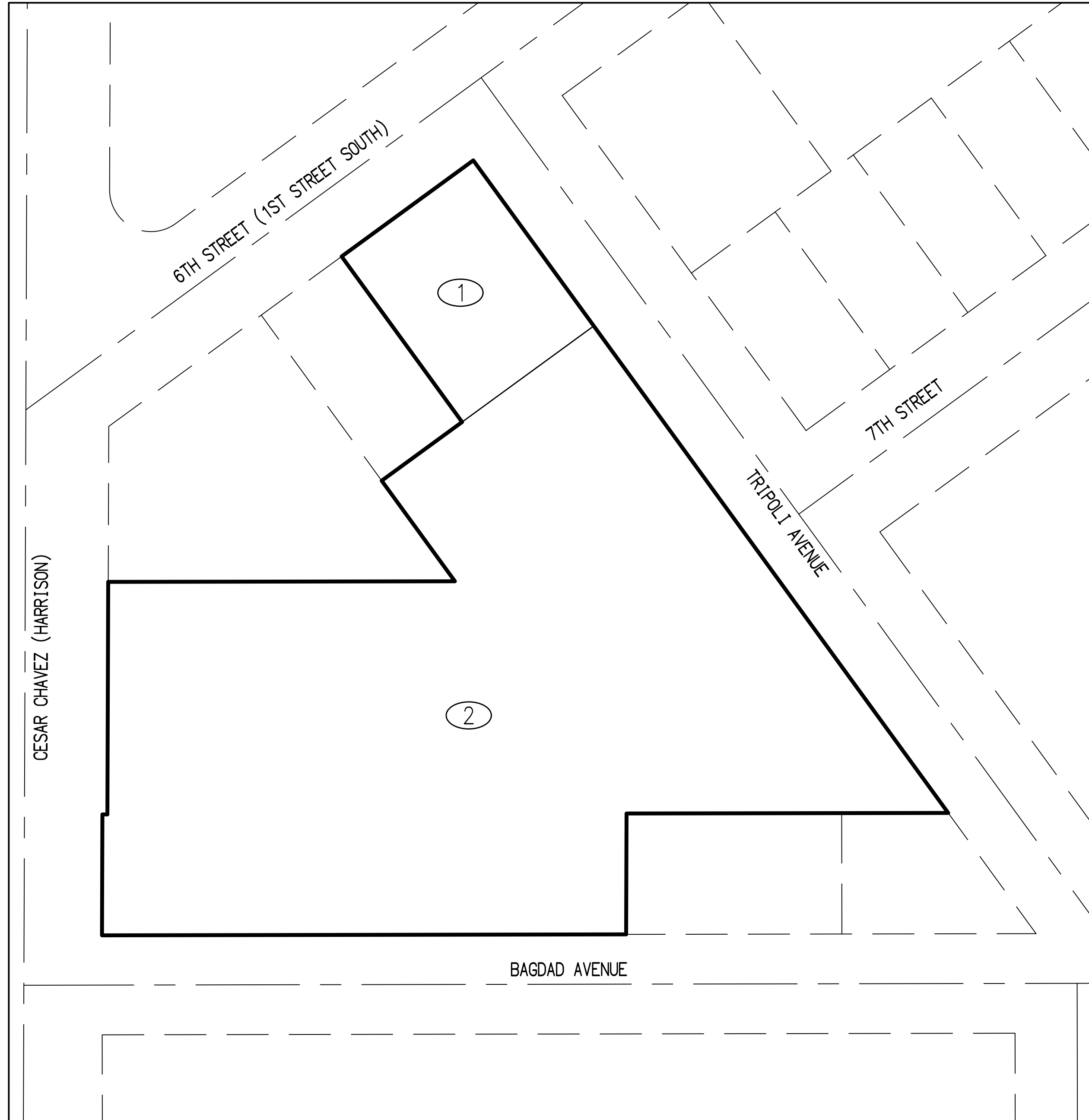
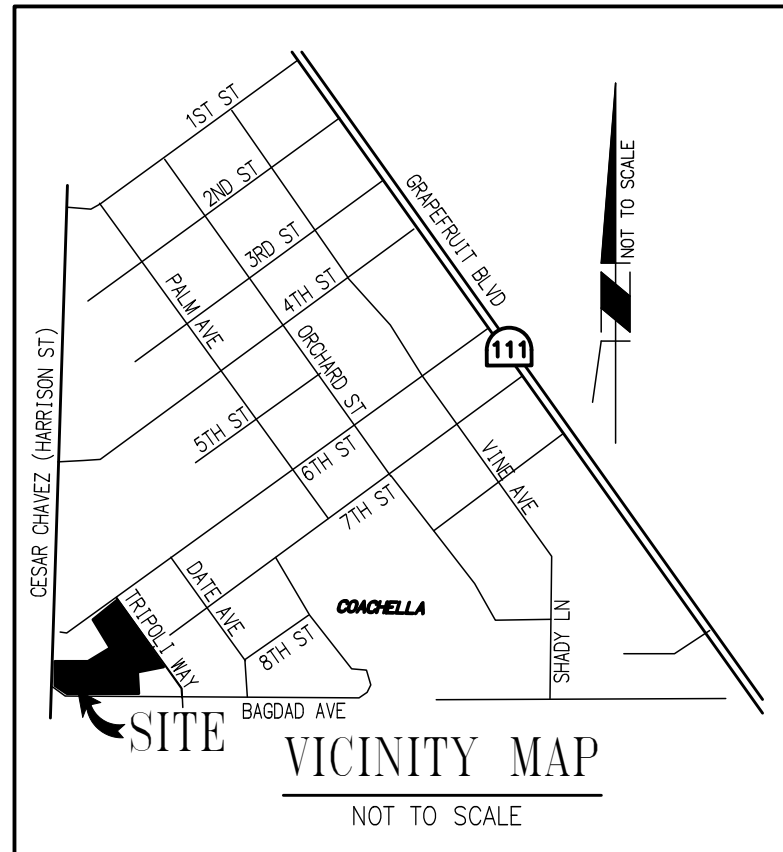


ANNEXATION MAP NO. 35
PUEBLO VIEJO VILLAS - PARCEL 1 OF PARCEL MERGER 2023-01
COMMUNITY FACILITIES DISTRICT NO 2005-01
(LAW ENFORCEMENT, FIRE AND PARAMEDIC SERVICES)



FILED IN THE OFFICE OF THE CITY CLERK THIS ____ DAY OF _____, 20____.

I HEREBY STATE THAT THE WITHIN MAP SHOWING PROPOSED BOUNDARIES OF ANNEXATION NO. ____, TRIPOLI APARTMENTS, TO COMMUNITY FACILITIES DISTRICT NO. 2005-1 (LAW ENFORCEMENT, FIRE AND PARAMEDIC SERVICES), CITY OF COACHELLA, COUNTY OF RIVERSIDE, STATE OF CALIFORNIA, WAS APPROVED BY THE CITY COUNCIL AT A REGULAR MEETING THEREOF, HELD ON THE ____ DAY OF _____, 2023, BY ITS RESOLUTION NO. _____.

 ANGELA ZEPEDA
 CITY CLERK
 CITY OF COACHELLA

FILED THIS ____ DAY OF _____, 2023, AT THE HOUR OF _____ O'CLOCK ____ M. IN THE BOOK ____ PAGES ____ OF MAPS OF ASSESSMENT AND COMMUNITY FACILITIES DISTRICTS AND AS INSTRUMENT NO. _____ IN THE OFFICE OF THE COUNTY RECORDER IN THE COUNTY OF RIVERSIDE, STATE OF CALIFORNIA.

 PETER ALDANA
 ASSESSOR - COUNTY CLERK - RECORDER
 COUNTY OF RIVERSIDE
 STATE OF CALIFORNIA

REFERENCE IS MADE TO THAT BOUNDARY MAP OF COMMUNITY FACILITIES DISTRICT NO. 2005-1 (LAW ENFORCEMENT, FIRE AND PARAMEDIC SERVICES) OF THE CITY OF COACHELLA RECORDED WITH RIVERSIDE COUNTY RECORDERS OFFICE ON SEPTEMBER 7, 2005, IN BOOK 63 OF MAPS OF ASSESSMENT AND COMMUNITY FACILITIES DISTRICT, PAGE 1000, AS INSTRUMENT NO. 2005-0737672.

THE LINES AND DIMENSIONS OF EACH LOT OR PARCEL SHOWN ON THIS DIAGRAM SHALL BE THOSE LINES AND DIMENSIONS AS SHOWN ON THE RIVERSIDE COUNTY ASSESSORS MAPS FOR THOSE PARCELS LISTED.

THE RIVERSIDE COUNTY ASSESSORS MAPS SHALL GOVERN FOR ALL DETAILS CONCERNING THE LINES AND DIMENSIONS OF SUCH LOTS OF PARCELS.

ASMT. NO.	ASSESSOR'S PARCEL NO.	ACREAGE
①	778-081-001	0.28± ACRES
②	778-081-003	2.48± ACRES
	TOTAL	2.76± ACRES

LEGEND

- ASSESSMENT BOUNDARY
- ① ASSESSMENT NUMBER