

EMERSON ST
40' PUBLIC RIGHT OF WAY
AC PAVEMENT WIDTH VARIES

← DEMOLITION SITE PLAN
SCALE: 1/32" = 1'-0"

LICENSE STAMPS

PROJECT NAME
**A PROPOSED
HOPE CENTER
EXPANSION**
FOR



3400 EMERSON STREET
CLEARLAKE, CA 96422

SHEET TITLE
**EXISTING /
DEMOLITION
SITE PLAN**

DRAWING STATUS
**CONSTRUCTION
DOCUMENTS**

REVISIONS

Sym.	Description	Date

Drawn By	LEV
Date Issued	2025-09-26
Scale	1/16" = 1'-0"
Project No.	25-4439

SHEET No.
A020

GENERAL NOTES



A SEE CIVIL, MECHANICAL, PLUMBING AND ELECTRICAL DRAWINGS FOR ADDITIONAL INFORMATION NOT SHOWN ON THIS PLAN

SETBACK REQUIREMENTS

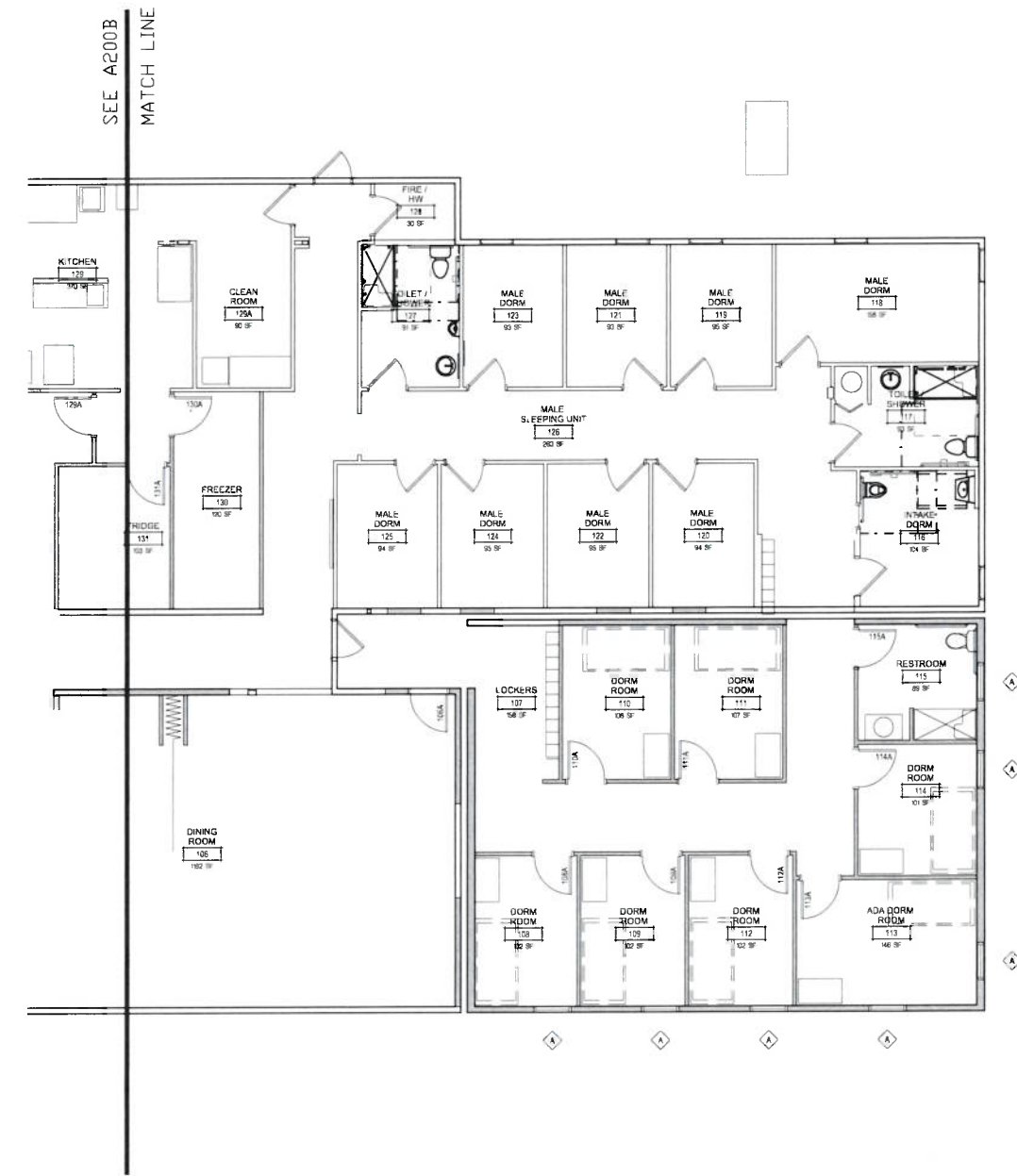
PER TOWN OF CLEARLAKE MUNICIPAL CODE
 ZONING COMMERCIAL
 FRONT
 SIDE
 REAR
 MAX HEIGHT STRUCT. 35'-0" OR 50'-0" W/ CONDITIONAL USE PERMIT

- KEY NOTES**
- 1 EXISTING CONCRETE SIDEWALK TO REMAIN
 - 2 EXISTING FENCE TO REMAIN
 - 3 PORTION OF EXISTING CONCRETE TO BE DEMOLISHED
 - 4 EXISTING RETAINING WALL TO BE DEMOLISHED
 - 5 EXISTING SIGNAGE TO REMAIN
 - 6
 - 7
 - 8
 - 9
 - 10
 - 11
 - 12
 - 13

LEGEND

	EXISTING SIDEWALK TO REMAIN
	EXISTING FENCE TO REMAIN

Copy Name: LARRY...
 Date: 2025-09-26 11:11 AM
 File Name: S:\Projects\2025\25-4439_A020.dwg
 User: LARRY...
 Plot: 25-4439_A020.dwg
 Scale: 1/16" = 1'-0"
 Sheet: 25-4439_A020.dwg



FLOOR PLAN - SOUTH
 SCALE 3/16" = 1'-0"

LICENSE STAMPS

PROJECT NAME
**A PROPOSED
 HOPE CENTER
 EXPANSION**
 FOR



3400 EMERSON STREET
 CLEARLAKE, CA 95422

SHEET TITLE

NEW FLOOR PLAN - SOUTH

DRAWING STATUS
**CONSTRUCTION
 DOCUMENTS**

REVISIONS

Sym.	Description	Date

Drawn By	LEV
Date Issued	2025-09-26
Scale	A5 NOTED
Project No.	25-4439

SHEET No.
A200A

GENERAL NOTES

- CONTRACTOR SHALL FIELD VERIFY ALL EXISTING CONDITIONS & DIMENSIONS
- DIMENSIONS ARE FROM FACE OF FINISH AT EXISTING CONDITIONS AND FROM FACE OF STUD AT NEW WALLS
- UNLESS OTHERWISE INDICATED TYPICAL INTERIOR WALL TYPE S TYPE
- SEE FINISH SCHEDULE SHEET A500 FOR ADDITIONAL INFORMATION
- SEE DOOR SCHEDULE SHEET A710 FOR ADDITIONAL DOOR INFORMATION AND TYPES
- DOOR OPENING LOCATIONS
 - ADJACENT 3" TO PLUMBING WALL
 - AT CENTERLINE OF THE ROOM
 - AS DIMENSIONED ON PLANS
- SEE WINDOW SCHEDULE SHEET A710 FOR ADDITIONAL WINDOW INFORMATION
- REFER TO MECHANICAL, PLUMBING AND ELECTRICAL DRAWINGS FOR ADDITIONAL CONSTRUCTION FEATURES, SYSTEMS, FIXTURES AND EQUIPMENT LOCATED IN OR ABOVE CEILING. TO THE EXTENT THAT THESE ITEMS ARE SHOWN ON REFLECTED CEILING PLANS THEY ARE FOR GENERAL INFORMATION AND LAYOUT PURPOSES ONLY AND DO NOT NECESSARILY REPRESENT ACTUAL SCHEMATIC QUANTITIES REQUIRED FOR THE PROJECT.
- FOR FRAMING DETAILS, SEE DETAIL SHEETS A501 AND A502 FOR BASE AND TOP OF WALL DETAILS FOR EACH WALL TYPE. SEE GENERAL ASSEMBLIES SHEET A710.
- FIRE ALARM SYSTEM TO BE INSTALLED THROUGHOUT FACILITY WHICH MUST BE CONNECTED TO A CENTRAL REPORTING STATION. THIS MEASURE WILL ENHANCE SAFETY BY ENSURING PROMPT EMERGENCY RESPONSE IN THE EVENT OF A FIRE.

WALL TYPES LEGEND
 SEE SHEET A710 FOR GENERAL ASSEMBLIES

KEY NOTES

- MIN 2 ALIGHT HAZARD OCCUPANCY PORTABLE FIRE EXTINGUISHER PER TABLE 908.3 (1) SEE A5031 FOR ADDITIONAL INFORMATION
- ELECTRICAL PANEL
- NEW FLOORING AT THIS LOCATION - SEE FINISHES SCHEDULE SHEET A500 FOR ADDITIONAL INFORMATION
- PATCH / REPLACE WINDOWS AS REQUIRED - SEE MECHANICAL PLANS
-
-
-
-
-
-
-
-
-
-
-

LEGEND

EXISTING WALL TO REMAIN

NEW STUD WALL - SEE DIMENSION PLAN SHEET A700 FOR GENERAL ASSEMBLY TYPE

NEW DOOR WITH DOOR TAG - SEE DOOR SCHEDULE SHEET A710 FOR MORE INFORMATION

NEW CASEWORK - SEE INTERIOR ELEVATIONS AND SHEET A541

INTERIOR ELEVATION TAG

PLUMBING FIXTURES - SEE SHEET Q210 FOR ACCESSIBILITY REQUIREMENTS AND PLUMBING DIAGRAMS

NEW ACCESSIBLE WALL HUNG HANDWASH SINK OR LAVATORY - SEE TAGS Q10 & TAGS Q11

NEW ACCESSIBLE WATER CLOSET - SEE TAGS Q12 & TAGS Q13

NEW ACCESSIBLE HAND WASH SINK AT COUNTERTOP - SEE TAGS Q14 & TAGS Q15

NEW STAINLESS STEEL WALL HUNG SINK - SEE TAGS Q16 & TAGS Q17

LEV: NICHOLS MELBURG ROSSETTO ARCHITECTS + ENGINEERS
 FOR THE HOPE CENTER EXPANSION PROJECT
 PROJECT NO. 25-4439
 SHEET A200A



February, 2026

AHCL HOPE CENTER EXPANSION

25-4439



February, 2026

AHCL HOPE CENTER EXPANSION 25-4439