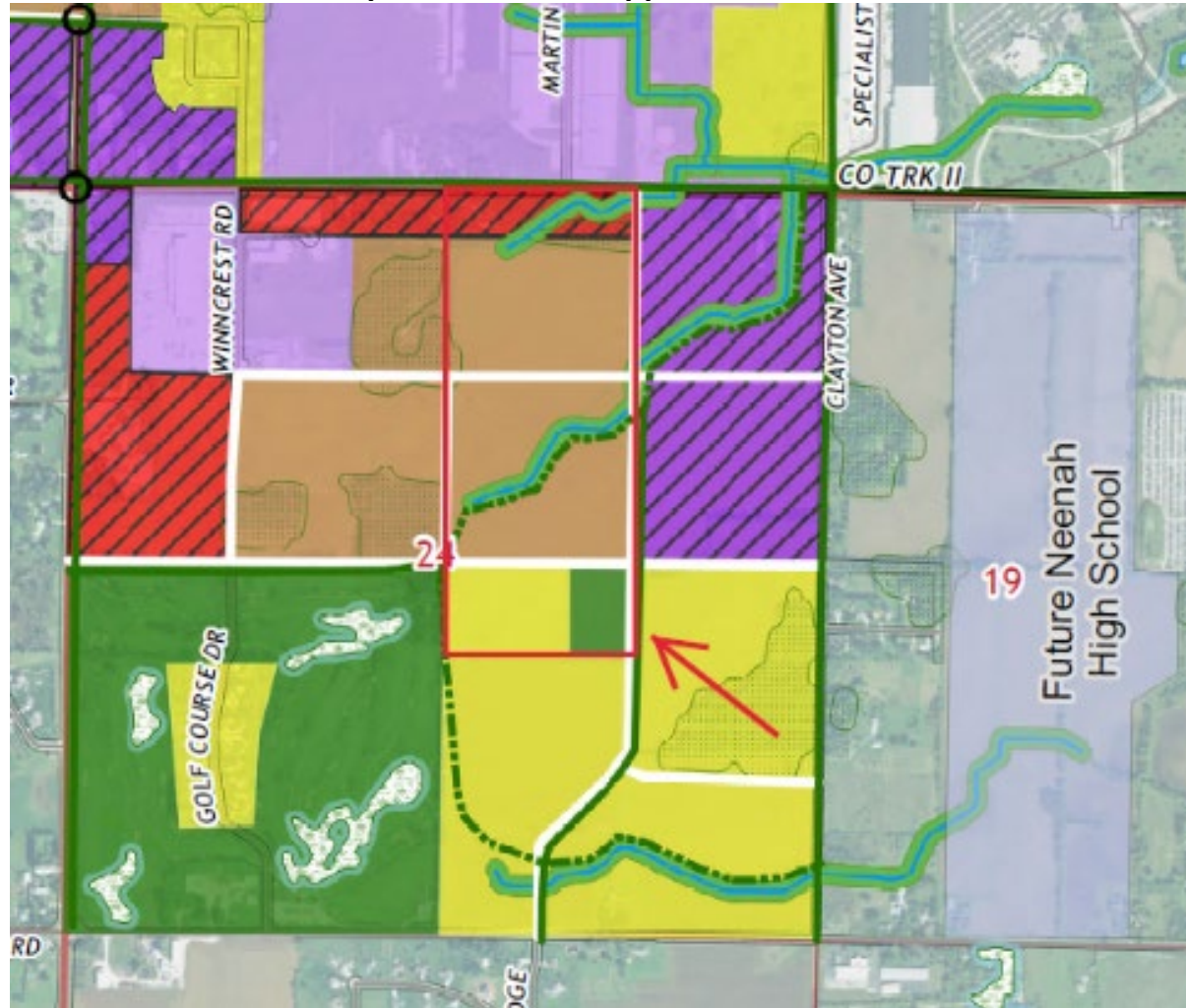


Tax ID #'s 006-0617, 006-0618, & 006-0632 Concept Plan Review Application



Town of Clayton
Hwys 10/76
Corridor Land Use
Master Plan (2040)

Winnebago County, Wisconsin

Legend

- Section
- Future Roads
- Existing Trails
- Railroad
- Woodland
- DNR Wetland
- Water Features
- Conservation/Drainage Way

Proposed Land Use Districts

- Single & Two Family Residential
- Medium or High Intensity Residential
- Clayton Business Park
- Gateway Commercial & Retail
- Neighborhood Center Mixed Use
- Light Industrial, Warehousing, and Distribution
- Utilities & Public Facilities
- Recreation & Conservation
- Current Non-Metallic Mine
- Proposed Regional Stormwater Facilities
- Intersection Safety Improvements

Future Trails

- Off-Road
- On-Road
- Outagamie County Airport
- Zoning Class
 - Zone 1
 - Zone 2A
 - Zone 2B
 - Zone 3
- Airport Buffer
 - 5,000 ft. Buffer
 - 10,000 ft. Buffer

ROAD CLASSIFICATION

- Expressway
- Secondary Hwy
- Ramp
- Interstate Route
- US Route
- Local Connector
- Local Road
- 4WD
- State Route

