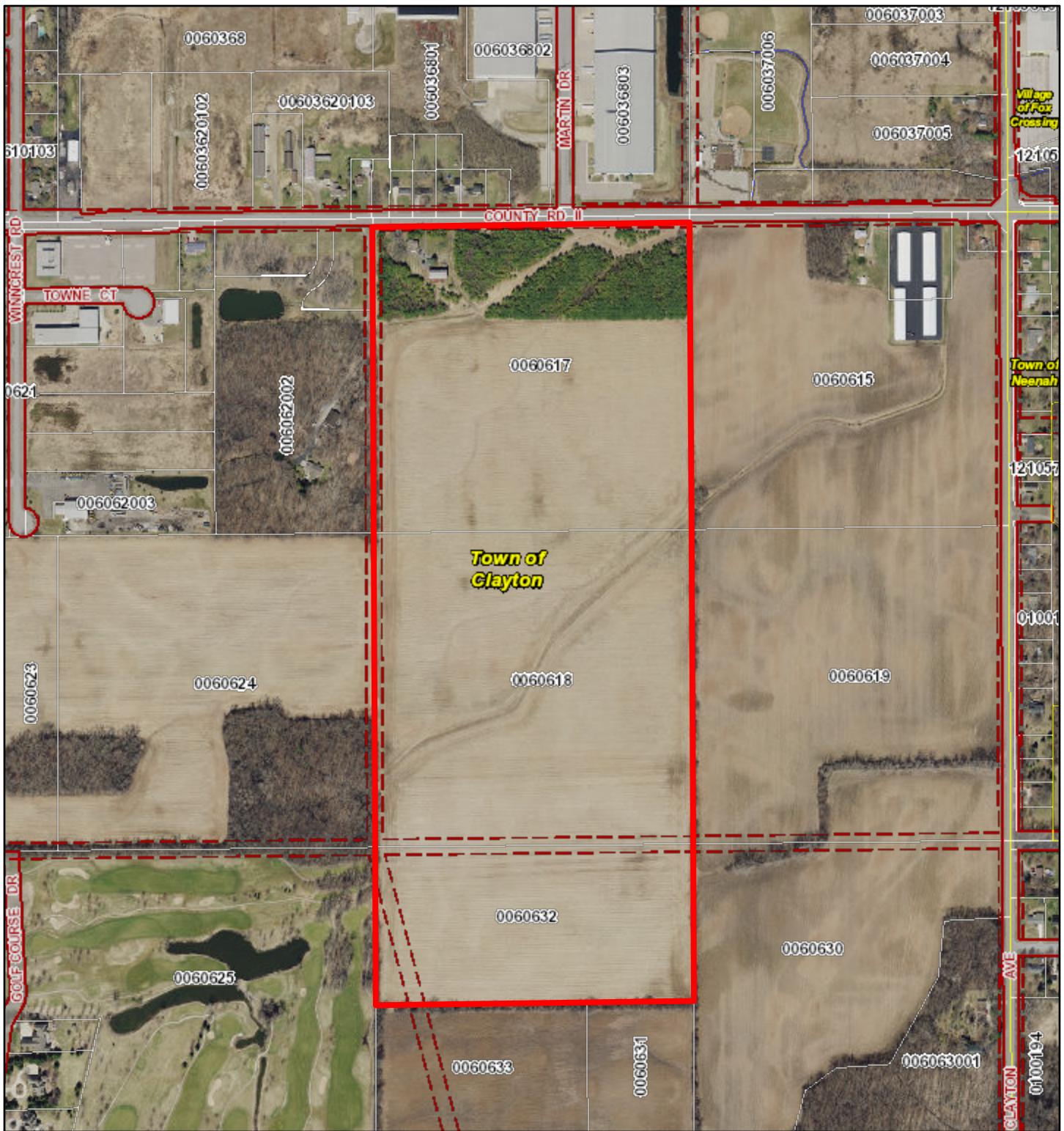


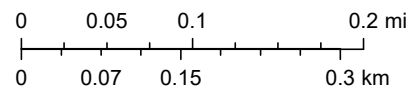
# Site Map 1-Clayton Development Group LLC



2/2/2023, 2:32:52 PM

1:7,111

- Official Mapped ROW Extension
- Adjacent Counties
- Lakes, Ponds and Rivers
- Navigable Waterways**
- Navigable - Permanent (unchecked)
- Navigable - Intermittent (unchecked)
- Navigable - Stream (unchecked)
- Navigable - Permanent (checked)
- Navigable - Intermittent (checked)
- Navigable - Stream (checked)
- Tax Parcel Boundary
- Road ROW



Winnebago County GIS, Imagery Date: April 2020