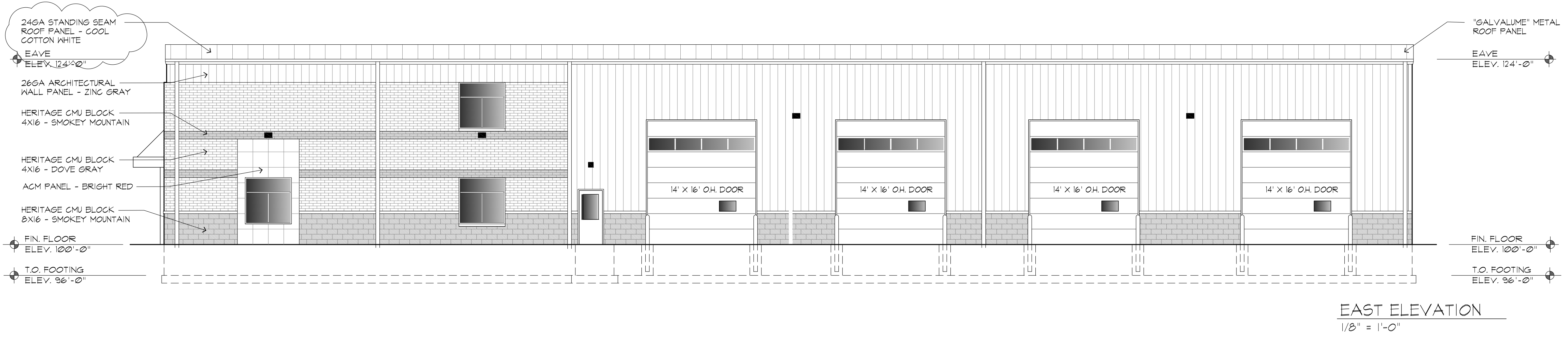
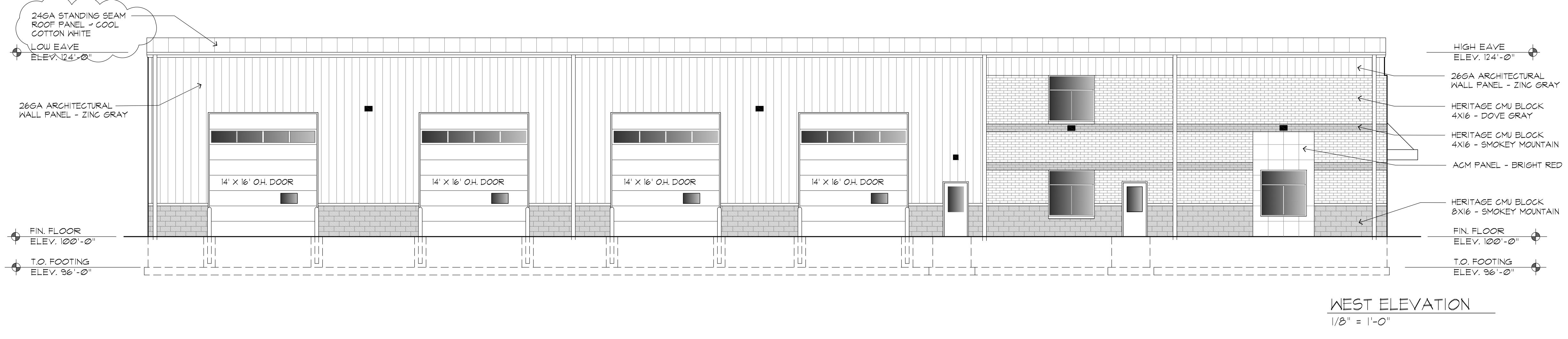
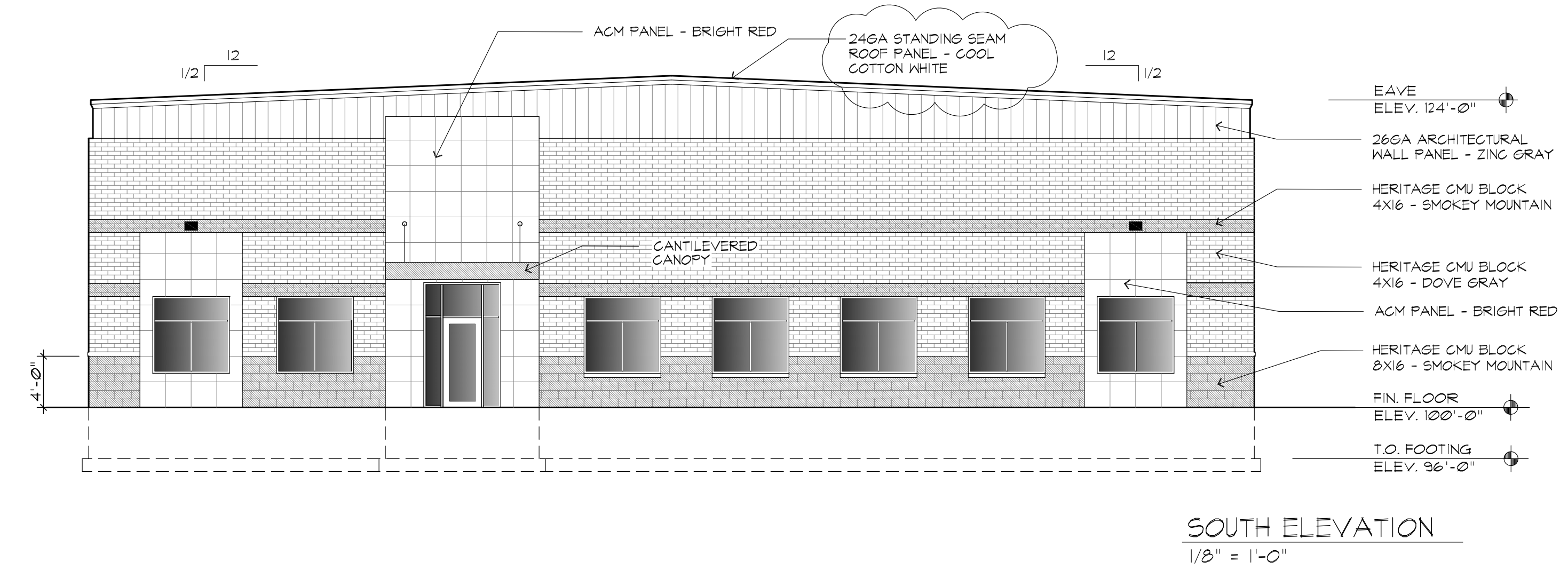
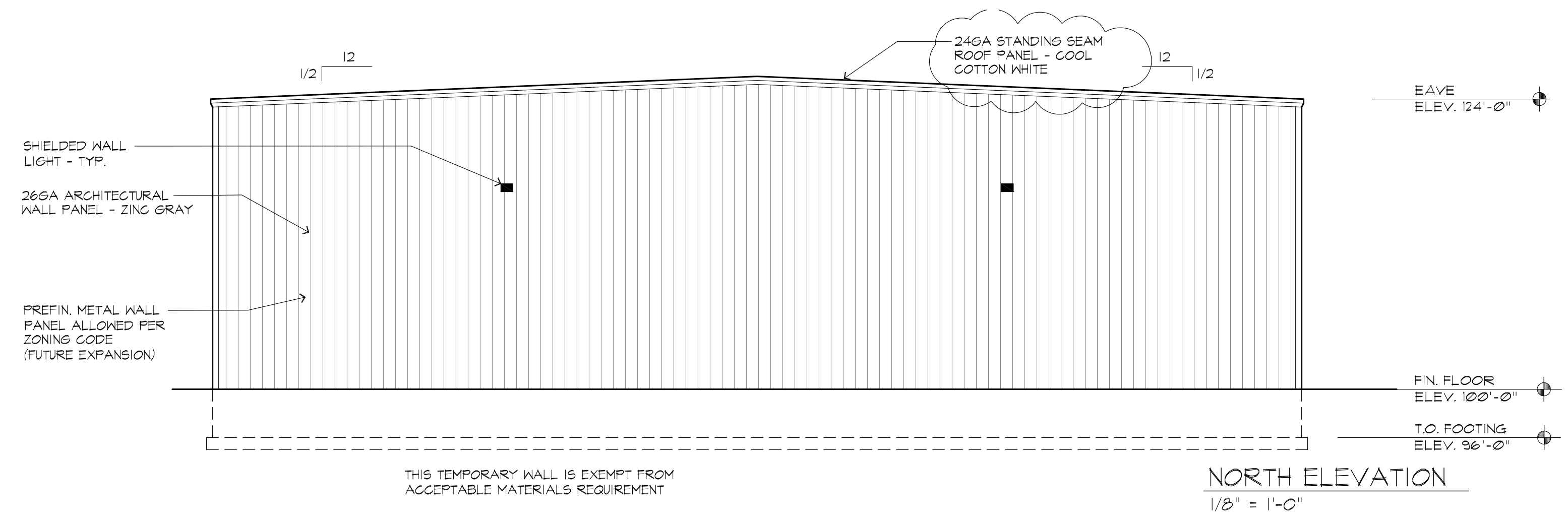
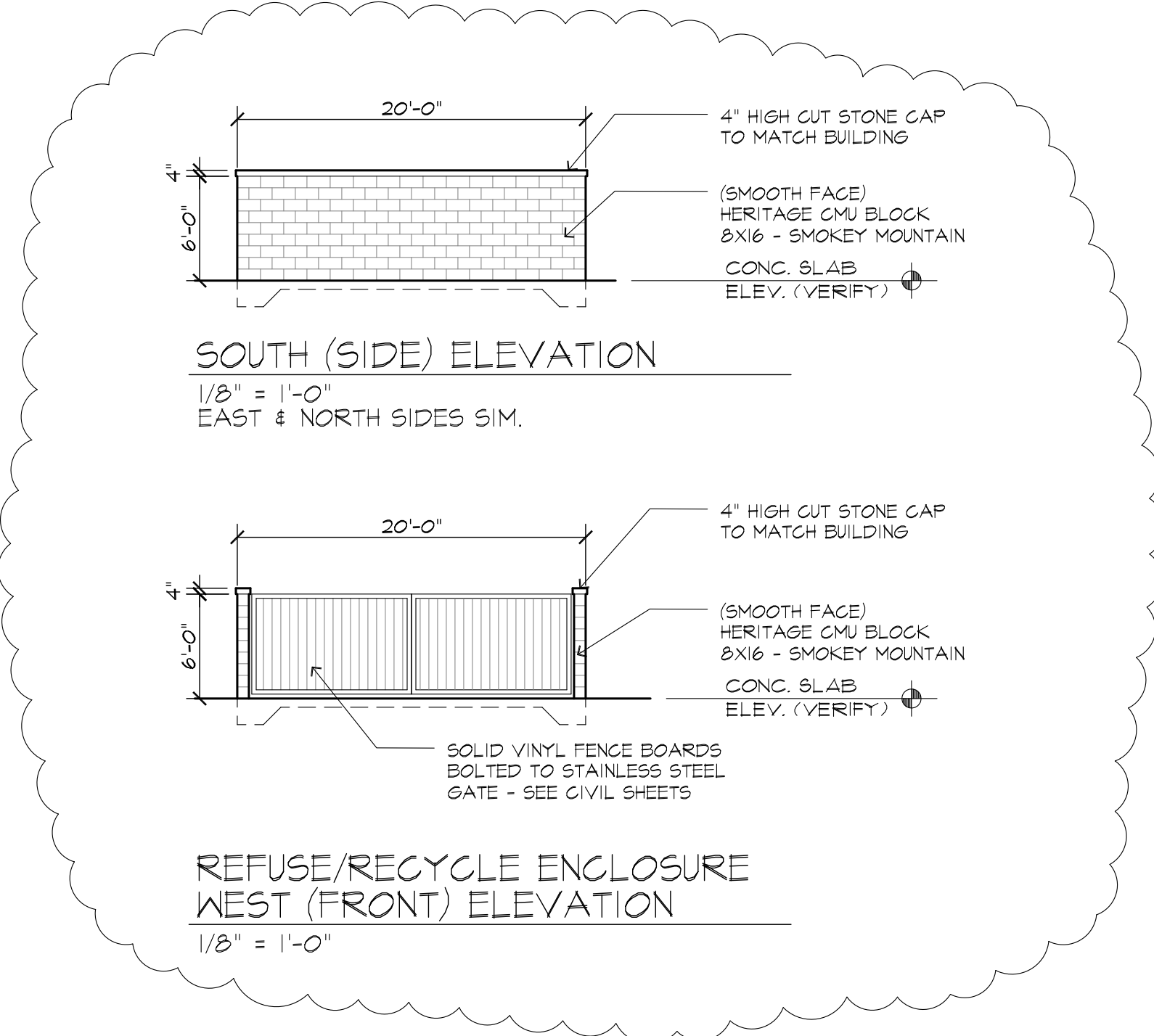


WE ARE REQUESTING THE VILLAGE TO APPROVE THE EXTERIOR ELEVATIONS WITH LESS THAN 75% ACCEPTABLE PRIMARY ELEVATION MATERIALS, SINCE THE VILLAGE HAS THE AUTHORITY TO ALLOW A DECREASE IN THOSE MATERIALS. WE FEEL WE MEET THE ARCHITECTURAL DESIGN INTENT OF THE ORDINANCE SINCE OUR SOUTH (FRONT) ELEVATION IS DIVERSE WITH (2) TYPES OF METAL WALL PANEL, & (2) TYPES OF MASONRY. THE EAST & WEST ELEVATIONS HAVE MASONRY AT THE BASE, AND OVERHEAD DOORS TAKE UP ABOUT HALF OF THE WALLS AS ALLOWED BY ZONING. THE PRIMARY FUNCTION OF THE BUILDING IS SERVICE RELATED WHICH REQUIRED THE OVERHEAD DOORS.

THANK YOU FOR YOUR CONSIDERATION.



No.	Date	Description
1	12/14/23	REVISED PER CLAYTON COMMENTS

Page Information

Drawn By	Approved By
EAF	JJW
Project No.	Date
23-2491	12/14/23
Sheet No.	