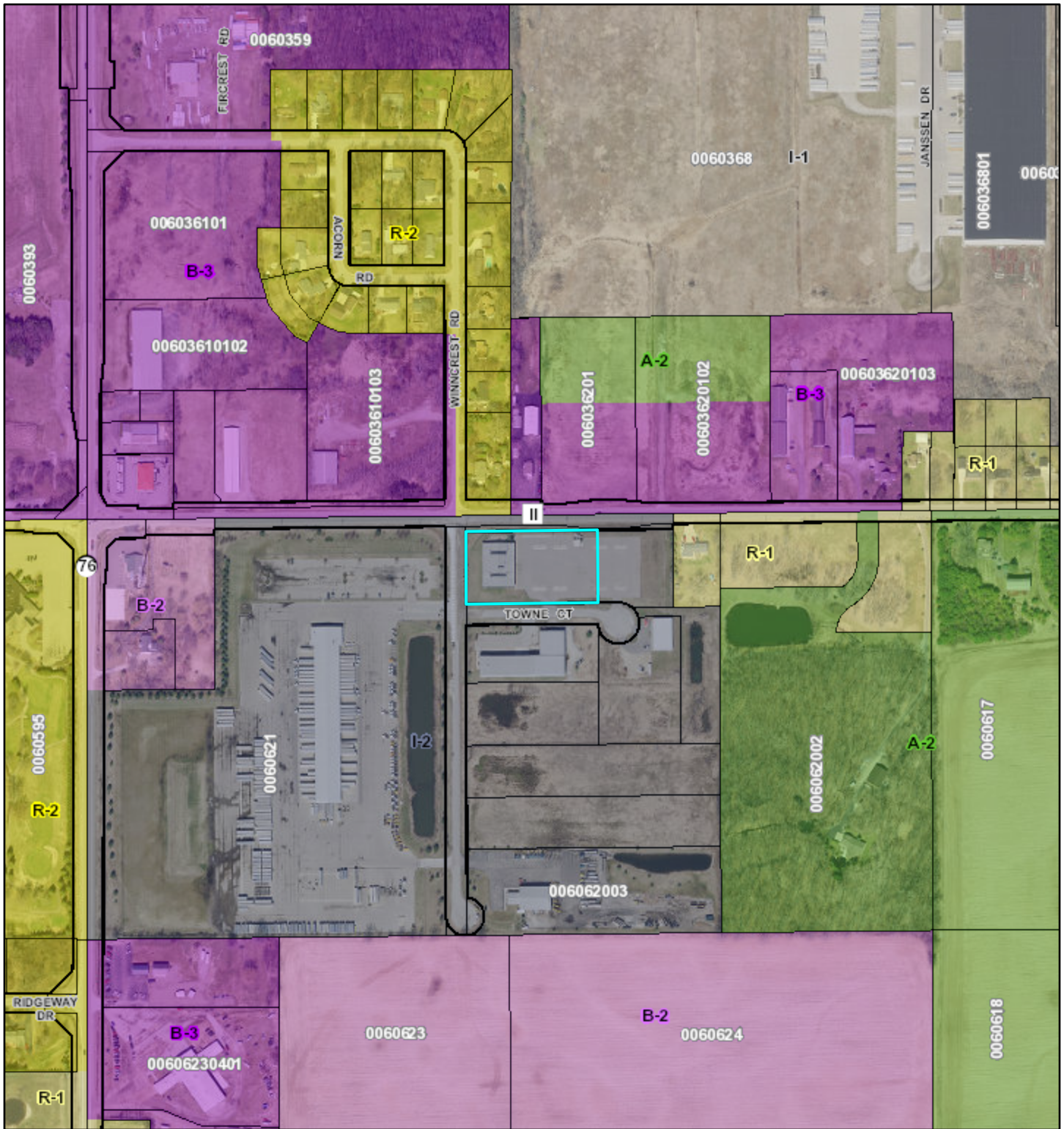


Positive Ventures LLC SPR App Zoning Map



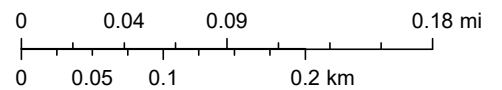
6/9/2023, 10:36:10 AM

1:5,325

District Code / Description

- A-1 - Agribusiness
- A-2 - General Agriculture
- R-1 - Rural Residential
- R-2 - Suburban Residential
- R-3 - Two-Family Residential

- R-4 - Multifamily Residential
- R-8 - Manufactured Housing Community
- PDD - Planned Development
- B-1 - Local Service Business
- B-2 - Community Business
- B-3 - General Business



Winnebago County GIS, Imagery Date: April 2020