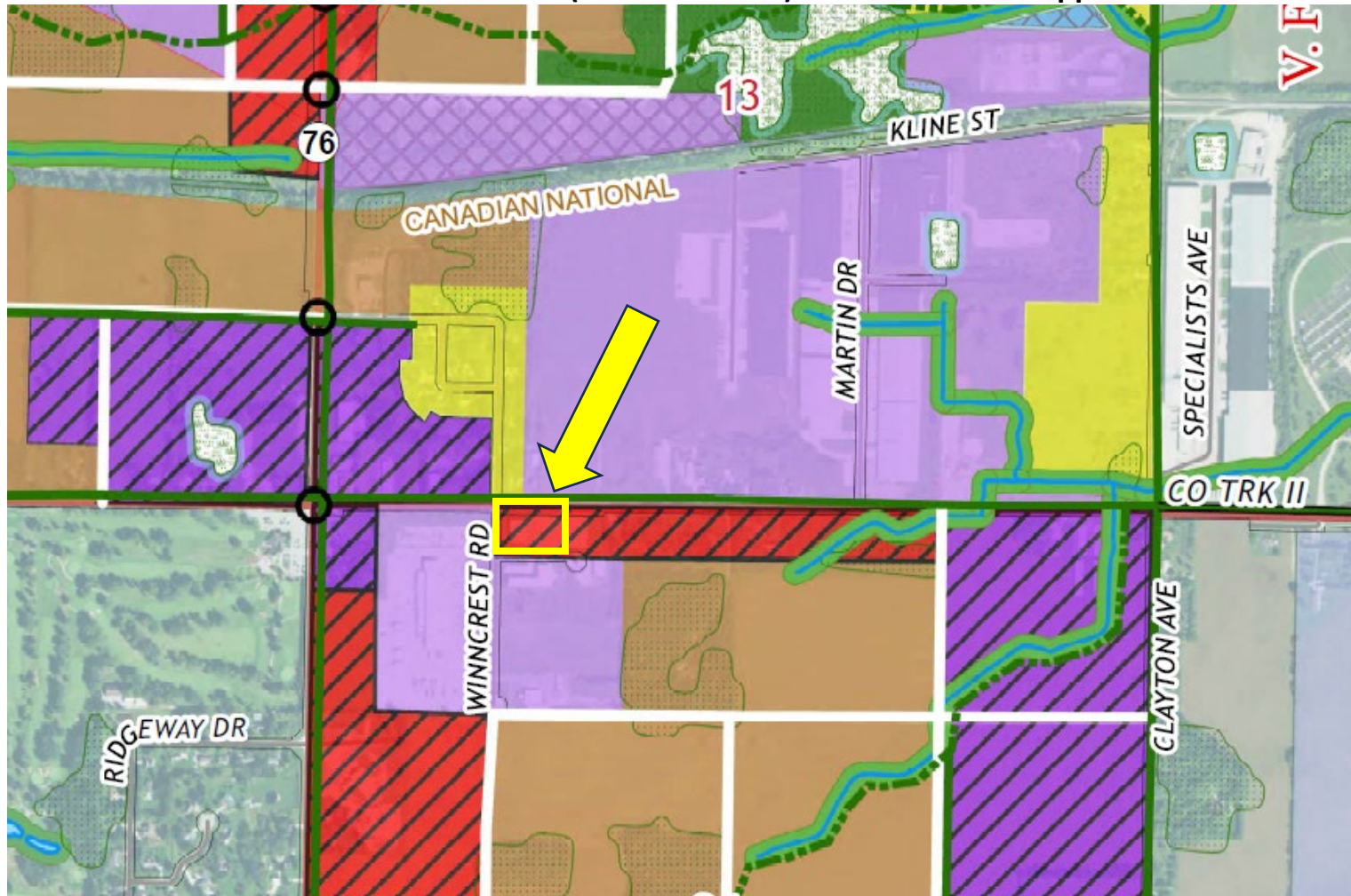


Positive Ventures LLC – PIN 006-0620-06 (2770 Towne Ct) Site Plan Review Application



Town of Clayton
 Hwys 10/76
 Corridor Land Use
 Master Plan (2040)
 Winnebago County, Wisconsin

Legend

- | | | |
|--|--|---|
| <ul style="list-style-type: none"> Section Future Roads Existing Trails Railroad Woodland DNR Wetland Water Features Conservation/Drainage Way | <p>Proposed Land Use Districts</p> <ul style="list-style-type: none"> Single & Two Family Residential Medium or High Intensity Residential Clayton Business Park Gateway Commercial & Retail Neighborhood Center Mixed Use Light Industrial, Warehousing, and Distribution Utilities & Public Facilities Recreation & Conservation Current Non-Metallic Mine Proposed Regional Stormwater Facilities Intersection Safety Improvements | <p>Future Trails</p> <ul style="list-style-type: none"> Off-Road On-Road <p>Outagamie County Airport</p> <p>Zoning Class</p> <ul style="list-style-type: none"> Zone 1 Zone 2A Zone 2B Zone 3 <p>Airport Buffer</p> <ul style="list-style-type: none"> 5,000 ft. Buffer 10,000 ft. Buffer |
|--|--|---|

ROAD CLASSIFICATION

- | | |
|------------------|-----------------|
| Expressway | Local Connector |
| Secondary Hwy | Local Road |
| Ramp | 4WD |
| Interstate Route | US Route |
| | State Route |

