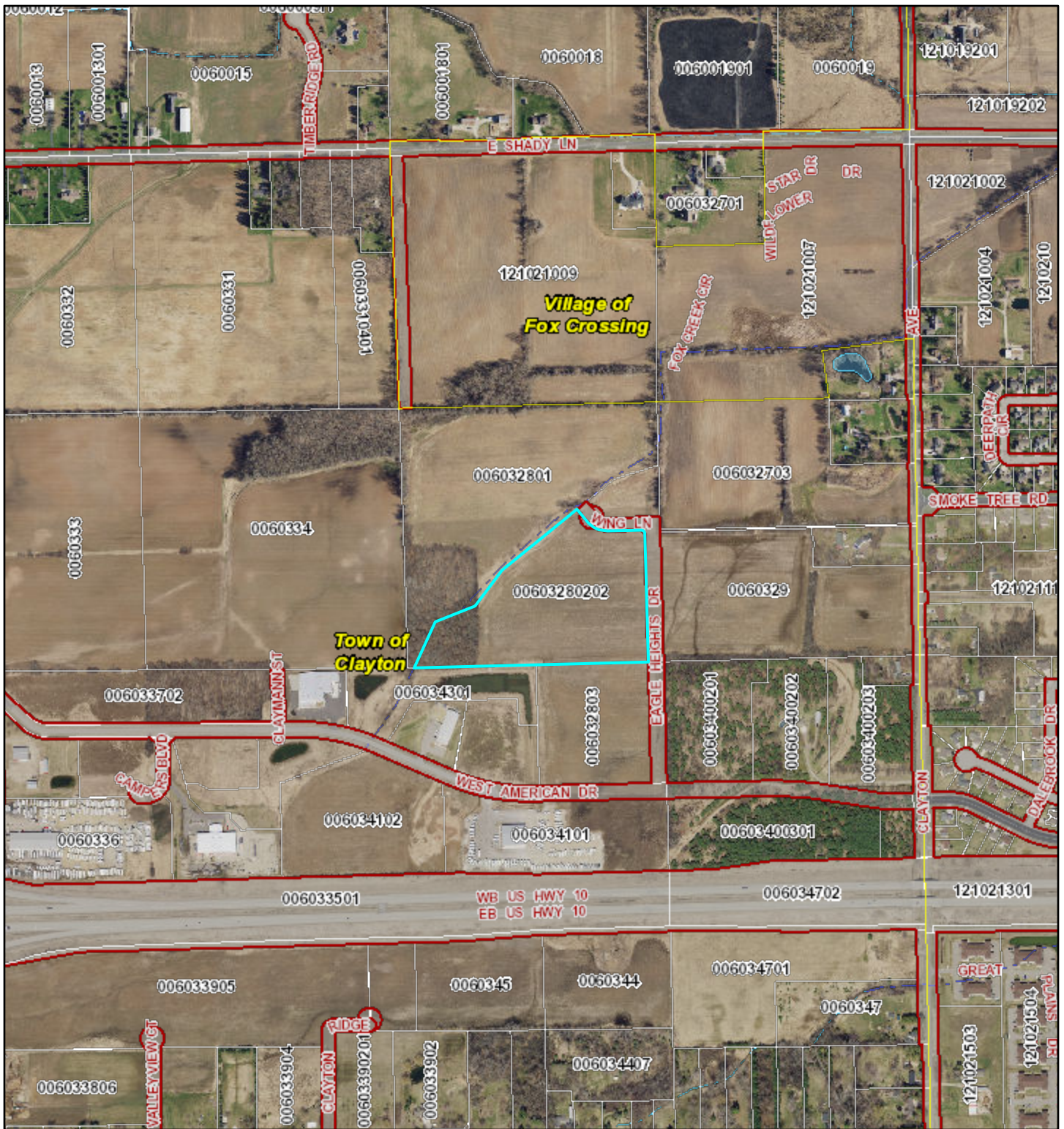


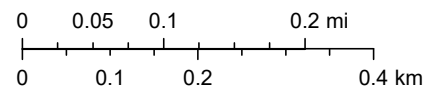
PRE/3 LLC SPR & CUP Apps Site Map 2



6/8/2023, 3:20:15 PM

1:8,610

- Adjacent Counties
- Lakes, Ponds and Rivers
- Navigable Waterways**
- Navigable - Permanent (unchecked)
- Navigable - Intermittent (unchecked)
- Navigable - Stream (unchecked)
- Navigable - Permanent (checked)
- Navigable - Intermittent (checked)
- Navigable - Stream (checked)
- Tax Parcel Boundary
- Road ROW
- Municipal Boundary



Winnebago County GIS, Imagery Date: April 2020